

762B Series II Scraper (Serial No. 818909—)



JOHN DEERE

OPERATORS MANUAL 762B Series II Scraper (Serial No. 818909)

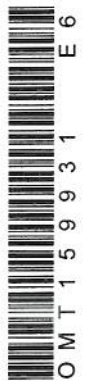
OMT159931 Issue E6 English

John Deere Dubuque Works

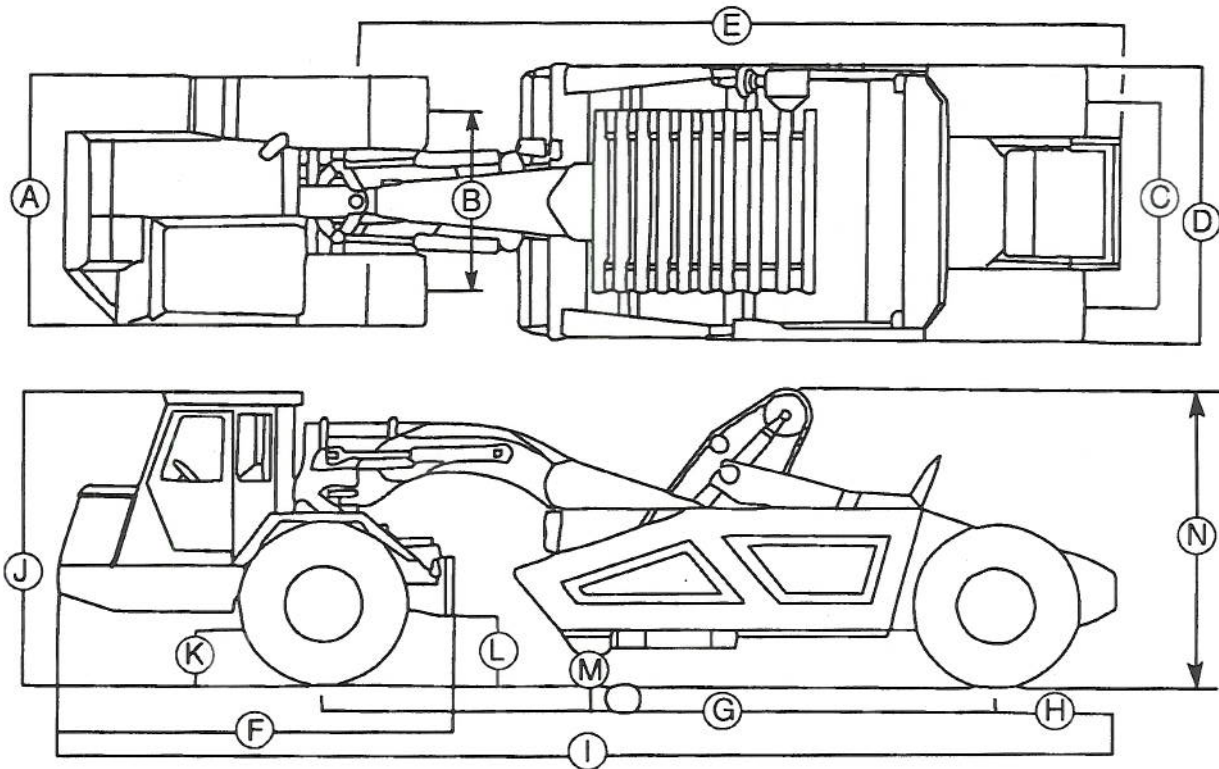
OMT159931 Issue E6

(Mark old manual OMT150801 K3 for
machines up to Serial No. 818908)

LITHO IN U.S.A.
ENGLISH



Specifications



TB130AA -JUN-22NOV93

762B Series II

Key	Bowl At Ground Level	Bowl Up	Bowl Level
A	2.44 m (8 ft)	2.44 m (8 ft)	2.44 m (8 ft)
B	1.96 m (6 ft 5 in.)	1.96 m (6 ft 5 in.)	1.96 m (6 ft 5 in.)
C	2.12 m (6 ft 11 in.)	2.12 m (6 ft 11 in.)	2.12 m (6 ft 11 in.)
D	2.44 m (8 ft)	2.44 m (8 ft)	2.44 m (8 ft)
E			7.37 m (24 ft 2 in.)
F	3.97 m (13 ft)	4.00 m (13 ft 1.5 in.)	3.98 m (13 ft 0.5 in.)
G	6.42 m (21 ft 1.0 in.)	6.21 m (20 ft 4.5 in.)	6.25 m (20 ft 6 in.)
H	1.28 m (4 ft 2.5 in.)	1.35 m (4 ft 5 in.)	1.35 m (4 ft 5 in.)
I	10.24 m (33 ft 7 in.)	10.06 m (33 ft)	10.14 m (33 ft 3 in.)
J	3.11 m (10 ft 2.5 in.)	2.99 m (9 ft 10 in.)	3.04 m (9 ft 11.5 in.)
K: Axle clearance	470 mm (18.5 in.)	470 mm (18.5 in.)	470 mm (18.5 in.)
L: Transmission clearance	440 mm (17.3 in.)	570 mm (22.4 in.)	488 mm (19.2 in.)
M: Without Teeth		474 mm (18.7 in.)	295 mm (11.6 in.)
With Teeth		417 mm (16.4 in.)	226 mm (8.9 in.)
Cut Below Ground Level			
Without Teeth	180 mm (7.1 in.)		
With Teeth	262 mm (10.3 in.)		
N	2.58 m (8 ft 5.5 in.)	2.82 m (9 ft 3 in.)	2.68 m (8 ft 9.5 in.)

TX,115,DH4137 -19-17APR96

Specifications

762B Series II

NOTE: Specifications and design subject to change without notice. Wherever applicable, specifications are in accordance with SAE Standards. Except where otherwise noted, these specifications are based on a unit equipped with 23.5—25, 16 PR tires, ROPS canopy, full fuel tank, 80 kg (175 lb) operator and standard equipment.

Engine: John Deere 6081A

Type	turbocharged and aftercooled diesel
Bore and stroke	116 x 129 mm (4.56 x 5.06 in.)
No. of cylinders	6
Displacement	8.18 L (496 cu. in.)
Compression ratio	16.5 to 1
Lubrication	Pressure system w/full-flow filter
Aspirated air cleaner with restriction indicator	Dry
Cooling fan	Suction type
Electrical system	24-volt w/80-amp alternator
Batteries (two 12-volt)	Reserve capacity: 160 minutes
SAE net horsepower at 2100 rpm	134 kW (180 hp)
Maximum net torque at 1400 rpm	933 N·m (688 lb-ft)

Torque Converter:

Two-phase single-stage with 2.3 to 1 multiplication ratio, free-wheeling stator, and lock-up clutch. Lock-up is operator controlled with direct-acting shift system, or automatic with optional automatic transmission control.

Transmission:

John Deere planetary powershift with torque converter: 6 speeds forward, 1 reverse

Shift control options:

Direct-acting (manual)	Shift lever activates 24-volt solenoids
Fully automatic	Microprocessor actuates 12-volt solenoids
Lubrication and shift-element actuation	1.5 L/s (24 gpm) gear pump

TX,115,DH4138 -19-17APR96

Specifications

762B Series II

Travel Speeds: (Maximum at 2100 engine rpm)

Direction	Gear	km/ h	mph
Forward	1	4.3	2.7
	2	6.1	3.8
	3	7.9	4.9
	4	11.3	7.0
	5	22.4	13.9
	6	40.9	25.4
Reverse	1	7.2	4.5

Differential Lock:

Foot operated, electro/hydraulic

Drive Axle (Differential type with inboard planetaries):

Lubrication and differential lock actuation 0.35 L/s (5.5 gpm) gear pump

Power Steering (Position-responsive type):

Articulated frame hydraulically actuated by dual cylinders

Turning circle (180° turn) 9.14 m (30 ft)

Frame articulation (total) 180°

Brakes (Hydraulic power actuated. Hydraulic accumulator provides dead engine-braking):

Front Adjustment-free inboard wet-disk

Rear Self-adjusting wheel-mounted expanding-shoe

Parking Spring applied, hydraulically released disc type

Hydraulic System:

Main machine: Load sense pressure compensated system with 75 cm³ (4.58 in.³) variable-displacement pump for steering, brakes, and all scraper functions except elevator drive.

System pressure 16 203 kPa (162 bar) (2350 psi)

Main pump rating 2.52 L/s (39.92 gpm) at 2100 engine rpm

Elevator drive: Hydrostatic system with 75.3 cm³ (4.60 in.³) variable-displacement, axial piston pump, and 63.7 cm³ (3.89 in.³) axial piston motor.

System pressure 34 475 kPa (345 bar) (5000 psi)

Pump rating 2.50 L/s (39.5 gpm) at 2100 engine rpm

Filtration (All systems are protected by replaceable filters):

Main hydraulic system 10 micron

Elevator system 10 micron

Transmission 10 micron

Engine 25 micron

Drive axle 10 micron

Specifications

762B Series II

Elevator:

Number of flights	18
Spacing of flights	316 mm (12.44 in.)
Width of flights	1.7 m (5 ft. 6.9 in.)
Speed variable	15-73 m/min (0—236 fpm)(with 4 detented positions)
Length (top to bottom)	2.9 m (9 ft 6 in.)

Cutting Edge:

2.29 m (7 ft 6 in.) wide; 3 sections, reversible and replaceable, high-carbon steel. Each section is adjustable vertically 51 mm (2 in.).

Center section	19 x 254 x 1372 mm (0.75 x 10 x 54.in.)
End sections	19 x 254 x 457 mm (0.75 x 10 x 18 in.)

Weight Distribution

Kg

Lb

Empty

Drive axle	10 385	22 900
Bowl axle	5 760	12 700
Total	16 145	35 600

Loaded

Drive axle	14 603	32 200
Bowl axle	14 059	31 000
Total	28 662	63 200

Drain and Refill Capacities:

	Metric	U.S.
Cooling system	34 L	9 gal
Fuel tank	329 L	87 gal
Engine oil with filter change	28.5 L	7.5 gal
Transmission oil with filter change	49 L	13 gal
Drive axle oil with filter change	31.2 L	8.25 gal
Hydraulic oil with hydraulic and elevator filters change	83 L	22 gal
Elevator gearbox oil	12.6 L	3.3 gal

TX,115,DH4119 -19-17APR96

Free Manuals Download Website

<http://myh66.com>

<http://usermanuals.us>

<http://www.somanuals.com>

<http://www.4manuals.cc>

<http://www.manual-lib.com>

<http://www.404manual.com>

<http://www.luxmanual.com>

<http://aubethermostatmanual.com>

Golf course search by state

<http://golfingnear.com>

Email search by domain

<http://emailbydomain.com>

Auto manuals search

<http://auto.somanuals.com>

TV manuals search

<http://tv.somanuals.com>