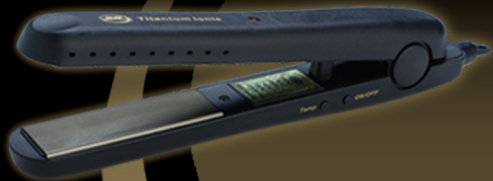


TitaniumHair Straighteners

Ionic action creates a frizz-free look with added shine

- *Hydro-balance technology*



Titanium Ionic Straighteners Instructions

***Read all instructions carefully before using
your Titanium Ionic Straighteners***

These fantastic titanium straighteners glide ultra smoothly across hair for a beautiful straight finish. The light, slim line design is great for easy styling. The Titanium Ionic Straighteners heat up quickly, with variable temperature control and a red to green LED to indicate when the unit is up to operating temperature. To ensure ease of use, there is over 1.5m of cable, and a swivel cord.

Important Safety Note

This product should arrive in good working condition, if you experience any problems or if you are dissatisfied with the product DO NOT attempt to repair it yourself. Please contact customer services immediately for assistance or advice. Any attempt to repair the product yourself will invalidate the 12 month guarantee. This product comes with an appropriate plug fitted to meet UK electrical standards as determined by the appropriate UK legislation.

General Safety Instructions

Always read the instructions prior to first use.

These safety precautions should always be followed to reduce the risk of electric shock, personal injury or fire. It is important to read all of these instructions carefully before using the product, and to save them for future reference or new users.

- *Do not use the unit with a multiplug.*
- *This product must only be used as intended in accordance with the enclosed operating instructions.*
- *Keep this product out of the reach of children. Always make sure that children cannot reach the appliance or any loose cables - electrical appliances must always be stored in a secure place, out of reach of children.*
- *Children should be closely supervised at all times when they are near any electrical appliance.*
- *This product is not a toy and has not been designed for use by children.*
- *Caution Danger of Burns: The unit, particularly the titanium plates become very hot during operation. The titanium plates also remain hot for some time after the unit is switched off. Burning can occur from touching heated unit parts. Use carefully and supervise others accordingly.*
- *Only touch the product on the handles when in use.*

- *Do not put the product down on any carpet or other non-heat proof surface while in use, or while still hot after use.*
- *Where relevant keep all ventilation slots, filters, etc. uncovered and clear of debris. Never drop or insert objects into the openings.*
- *To avoid potential damage to property, never leave the appliance alone while turned on. Switch off the power supply or unplug from the mains socket when not in use and before cleaning, changing accessories, or servicing.*
- *Using the improper voltage may result in damage to the heating elements and possible injury to the user.*
- *Do not operate where aerosol or spray products, e.g. toiletries, are in use.*
- *Do not use any attachments with this product. Use of any other attachments may cause fire, electric shock or injury.*
- *Do not use with a damaged cord or plug. Do not use if it has been dropped, left outdoors, or dropped in water, or if it is not working according to these instructions. A qualified electrician must always carry out any repairs that are necessary.*
- *If the appliance stops unexpectedly or appears to malfunction, switch off the power supply, unplug from the mains and stop using immediately. Seek professional advice to rectify the fault or make repairs.*
- **WARNING:** *To protect against electric shock, never allow the appliance, the mains cable or plug to come into contact with water or any other liquid.*

- *Do not use whilst bathing or showering. Do not place near sinks or baths, or anywhere the unit may fall in to liquid.*
- *Do not use outdoors. This appliance has been designed for domestic indoor use only. Use and store indoors.*
- *Never reach for any appliance that has fallen into water. Switch off the power supply at the mains immediately and unplug. Do not re-use until the product has been inspected and approved by a qualified electrician.*
- *Always ensure that hands are dry before operating or adjusting any switch on the product or touching the plug and mains supply connections. Do not handle with wet hands.*
- *Do not pull or carry by the cord, use the cord as a handle, close a door on the cord, or pull the cord around sharp edges or corners. Caution should be used to ensure the cord is arranged so that it will not be pulled on, tripped over, trapped or damaged.*
- *Regularly check the cord and plug for any signs of damage.*
- *For safety reasons, a broken or damaged mains cord may only be replaced by an equivalent lead from the manufacturer or similarly qualified person.*
- *Keep the appliance and cord away from sources of heat, sharp objects or anything that may cause damage. Never leave the cord in contact with the hot plates.*

- *Let the appliance cool completely before putting it away.*
- *If the supply cord or any part of the product is damaged, it must be replaced by the manufacturer or its service agent, or similarly qualified person, in order to avoid hazard.*
- *To unplug: grasp the plug not the cord. Do not unplug by pulling on the cord.*
- *Switch off at the mains socket before unplugging.*
- *Incorrect reassembly or repair to the appliance can cause risk of fire, electric shock or injury to persons when the appliance is used.*
- *Save these instructions.*

Extra Safety Precautions

1. *The unit becomes **VERY HOT** when in use. Take care to avoid contact between the hot surfaces of the plates and the skin, particularly around the face and neck.*
2. *Do not touch the plates when the appliance is switched on or just after it has been turned off.*

ALLOW AT LEAST 30 MINUTES TO COOL DOWN BEFORE STORING AWAY.

3. *The appliance should **NEVER** be stored whilst hot or while still connected to the mains. Always ensure the appliance is switched off at the mains, unplugged from the mains and it has cooled*

- down completely before storing.*
- 4. Never wrap the mains cord around the plates. Do not hang up by the power cord, except the hooked end.*
 - 5. If the plates are damaged or broken then do not use the appliance.*
 - 6. PLEASE ENSURE THE APPLIANCE IS UNPLUGGED AFTER USE.**

Controls and Features

- *Thermo Titanium Technology.*
- *Fast Heating – ready to use in seconds.*
- *Ionic lustre-enhancing hyrdo-balance technology.*
- *Bespoke Optimum Operating Temperature.*
- *Salon-Pro storage method – hooked end for easy hanging.*

Benefits

- *The titanium plates create silky smooth hair.*
- *The ionic function helps to prevent the build up of static electricity in the hair, and works to maintain a healthy moisture balance, for that soft, smooth radiant effect.*
- *Suitable for all hair lengths and thicknesses-choose the temperature to suit your style!*
- *Temperature controlled for consistent heat delivery.*
- *Sleek and lightweight ergonomic design.*



Instructions for Use

1. Fully unwind the mains cable.
2. Turn on the appliance just before it is required for use (30-40 seconds), as the plates heat up very fast. Maximum temperature (210°C) is reached rapidly. Choose the temperature that is right for your hair, and style you are creating, by trying the **lowest heat first**.
3. Only connect the appliance to a properly installed mains socket – 220-240 volts- 50Hz.
4. For straightening the hair, take a section no more than 2 to 3 inches wide. Place the hair between the 2 flat plates and close them tight. Slide the plates as close as possible to the scalp without touching it. **(DO NOT TOUCH THE SCALP)**
5. Hair straightening spray or serum can be used to enhance your hairs shine.
6. Hold the plates tight (by pressing the handles together). Hold for 2-3 seconds and slide the unit away from the head towards the ends of the hair.
7. **DO NOT HOLD THE HAIR BETWEEN THE PLATES FOR ANY MORE THAN 2-3 SECONDS.**
8. When one section of hair has been treated, move to another.
9. Please unplug after use and allow to cool before storing.

Cleaning and Maintenance

- *The appliance must be switched off and unplugged from the electricity supply before cleaning.*
- *Do not touch the titanium plates for at least 30 minutes after turning off. Wipe with a damp cloth to clean the titanium plates.*
- *Let the appliance cool down before touching or cleaning the body.*
- *Clean the body with a damp cloth.*
- *Do not use harsh detergents, abrasives, solvents or cleaners. Never immerse in water to clean.*
- *Do not replace the mains supply lead into the appliance – always use an authorised representative or qualified electrician.*

Disposal and the Environment

If your electrical appliance requires replacement or is of no further use, please think of protecting the environment. Contact your local authority for advice as many have facilities for environmentally safe disposal.

Connection to Power

Mains Plug / 13 Amp Plug

The unit is fitted with a standard UK mains 3 pin plug. If the mains lead gets damaged it must be replaced by a qualified electrician. If you have to change the plug because the standard plug is damaged or

is not suitable for your mains socket, then follow carefully the wiring instructions below.

If the plug is cut off, remove the fuse from the severed plug and dispose of it safely, as insertion into a mains supply socket would be dangerous.

Mains plug wiring

As the colour of the wires in the mains lead may not correspond with the coloured markings identifying terminals in your plug, proceed as follows:

- *The wire that is coloured BROWN or RED is connected to the terminal that is marked with the letter "L".*
- *The wire that is coloured BLUE or BLACK is connected to the terminal that is marked with the letter "N".*
- *No connection is made to the earth terminal which is marked "E" or or coloured GREEN or GREEN and YELLOW.*

Mains Fuse

If a 13Amp (BS 1363 type) plug is used then a 13 Amp (BS 1362 type) fuse must be fitted.

Due to continual improvements, the appearance or specification of this product may change slightly to that shown.



*If you have any queries about this products or
would like to know more about JML products
please call us at:*

John Mills Limited
JML House
Regis Road
London
NW5 3EG
Tel: 020 7691 3800
Fax: 020 7691 3801
www.jmldirect.com



Model No. BWT_B107
Power Consumption: 50W
Power Supply 220-240V ~50Hz AC

Guarantee:

*This product is
unconditionally guaranteed
for one year against all
defects of workmanship and
materials. This guarantee
does not affect your
statutory rights.*

Free Manuals Download Website

<http://myh66.com>

<http://usermanuals.us>

<http://www.somanuals.com>

<http://www.4manuals.cc>

<http://www.manual-lib.com>

<http://www.404manual.com>

<http://www.luxmanual.com>

<http://aubethermostatmanual.com>

Golf course search by state

<http://golfingnear.com>

Email search by domain

<http://emailbydomain.com>

Auto manuals search

<http://auto.somanuals.com>

TV manuals search

<http://tv.somanuals.com>