

# JVC

DVD Burner  
**INSTRUCTIONS**

DVD-Brenner  
**BEDIENUNGSANLEITUNG**

Graveur de DVD  
**MANUEL D'UTILISATION**

DVD-brander  
**GEBRUIKSAANWIJZING**

Grabador de DVD  
**MANUAL DE INSTRUCCIONES**

Masterizzatore di DVD  
**ISTRUZIONI**

DVD-brænder  
**INSTRUKTIONSBOG**

DVD-tallennin  
**KÄYTTÖOHJE**

DVD-brännare  
**BRUKSANVISNING**

DVD-brenner  
**BRUKSANVISNING**

Записывающее устройство  
для дисков DVD  
**ИНСТРУКЦИЯ ПО ЭКСПЛУАТАЦИИ**

Пристрій для запису DVD  
**ІНСТРУКЦІЯ**

Vypalovací jednotka DVD  
**PŘÍRUČKA K OBSLUZE**

Nagrywarka DVD  
**INSTRUKCJA OBSŁUGI**

DVD-író  
**HASZNÁLATI UTASÍTÁSA**

Gravador de DVD  
**INSTRUÇÕES**

DVD 刻录机  
**使用说明书**

DVD 燒錄器  
**使用說明書**

ENGLISH

DEUTSCH

FRANÇAIS

NEDERLANDS

CASTELLANO  
ESPAÑOL

ITALIANO

DANSK

SUOMI

SVENSKA

NORSK

РУССКИЙ

УКРАЇНСЬКА

ČEŠTINA

POLSKI

MAGYAR

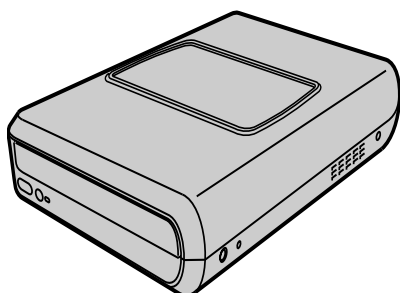
PORTUGUÊS

中文简体

中文繁體

## CU-VD20

## U/E/EK/ER/AA/AC/AG/AS/TW



**For Customer Use:**

Enter the Model No. and Serial No. (located on the bottom of the burner) below. Retain this information for future reference.  
**Model No.**

**Serial No.**

**This burner enables DVDs of videos recorded with the JVC Hard Disk Camera to be created without using a PC.**

- If you want to edit videos recorded with the camera and create your original DVDs, use the software provided with the camera for editing and creating DVDs.
- The provided data writing software Power2Go 5.5 Lite can be used for writing data. However, it cannot be used to edit videos or create DVDs.
- The burner does not include support for Macintosh.

**Dear Customer,**

Thank you for purchasing this burner. Before use, please read the safety information and precautions contained in pages 2 and 3 to ensure safe use of this product.

**Safety Precautions**

**IMPORTANT:**

In the event that any of the following occur, remove the plug and make a request for repair to the dealer.

- Smoke or abnormal odor is emitted
- Damage from being dropped
- Water or an object enters inside

**CAUTION:**

A UNIT IS A CLASS 1 LASER PRODUCT. HOWEVER THIS UNIT USES A VISIBLE LASER BEAM WHICH COULD CAUSE HAZARDOUS RADIATION EXPOSURE IF DIRECTED. BE SURE TO OPERATE THE UNIT CORRECTLY AS INSTRUCTED. WHEN THIS UNIT IS PLUGGED INTO THE WALL OUTLET, DO NOT PLACE YOUR EYES CLOSE TO THE OPENING OF THE DISC TRAY AND OTHER OPENINGS TO LOOK INTO THE INSIDE OF THIS UNIT. USE OF CONTROLS OR ADJUSTMENTS OR PERFORMANCE OF PROCEDURES OTHER THAN THOSE SPECIFIED HEREIN MAY RESULT IN HAZARDOUS RADIATION EXPOSURE. DO NOT OPEN COVERS AND DO NOT REPAIR YOURSELF. REFER SERVICING TO QUALIFIED PERSONNEL. CLASS 1 LASER PRODUCT REPRODUCTION OF LABELS WARNING LABEL INSIDE OF THE UNIT

|  |  |   |  |  |  |
|--|--|---|--|--|--|
| CAUTION<br>CLASS 1M LASER<br>RADIATION WHEN<br>OPEN. DO NOT VIEW<br>DIRECTLY WITH<br>OPTICAL INSTRUMENTS.<br><br>CAUTION<br>LASER RADIATION<br>WHEN OPEN. DO NOT<br>STARE INTO BEAM (EN) | ATTENTION<br>ÉMET UN<br>RAYONNEMENT<br>LASER DE CLASSE<br>1M LORSQUE OUVERT.<br>NE PAS REGARDER<br>DIRECTEMENT<br>À TRAVERS DES<br>INSTRUMENTS<br>D'OPTIQUES. (FR) | ADVARSEL<br>KLASSE<br>1M-LASERSTRÅLING<br>NÅR ÅPNET. IKKE SE<br>DIREKTE INN I OPTISKE<br>INSTRUMENTER. (NO) | ADVARSEL<br>KLASSE 1M<br>LASERSTRÅLING NÅR<br>APPARATET ÅPNES.<br>IKKE IKKE DIREKTE PÅ<br>STRÅLEN MED<br>OPTISKE<br>INSTRUMENTER. (DA) | VAROJ<br>LUOKAN 1M<br>LASERSÄTELY<br>LÄITTEEN SUJALLA.<br>ÄLÄ KATSO<br>SÄTEESEEN<br>SUORAN OPTISILLA<br>LÄITTEILLÄ. (FI) | VARNING<br>KLASS 1M<br>LASERSTRÅLING<br>NÅR DEN ÄR ÖPPEN.<br>TITTA INTE DIREKT PÅ<br>DEN MED OPTISKA<br>INSTRUMENT. (SW)<br>LP41334-001A |
|--|--|---|--|--|--|

This unit applies to the standard "IEC60825-1:2001" for laser products.

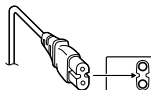
The socket-outlet shall be installed near the equipment and shall be easily accessible.

**ATTENTION:**

This unit contains microcomputers. External electronic noise or interference could cause malfunctioning. In such cases, switch the unit off and unplug the mains power cord. Then plug it in again and turn the unit on. Take out the disc. After checking the disc, operate the unit as usual.

**CAUTION:**

To avoid electric shock or damage to the unit, first firmly insert the small end of the power cord into the AC Adapter until it is no longer wobbly, and then plug the larger end of the power cord into an AC outlet.



If malfunctioning occurs, stop using the unit immediately and consult your local JVC dealer.

**Declaration of Conformity (for owners in the U.S.A.)**

Model Number : CU-VD20U  
Trade Name : JVC  
Responsible party : JVC AMERICAS CORP.  
Address : 1700 Valley Road Wayne, N. J. 07470  
Telephone Number : 973-317-5000

This device complies with Part 15 of FCC Rules. Operation is subject to the following two conditions: (1) This device may not cause harmful interference, and (2) this device must accept any interference received, including interference that may cause undesired operation.

**(For owners in the U.S.A.)**

Changes or modifications not approved by JVC could void the user's authority to operate the equipment. This equipment has been tested and found to comply with the limits for a Class B digital device, pursuant to Part 15 of the FCC Rules. These limits are designed to provide reasonable protection against harmful interference in a residential installation. This equipment generates, uses, and can radiate radio frequency energy and, if not installed and used in accordance with the instructions, may cause harmful interference to radio communications. However, there is no guarantee that interference will not occur in a particular installation. If this equipment does cause harmful interference to radio or television reception, which can be determined by turning the equipment off and on, the user is encouraged to try to correct the interference by one or more of the following measures:

- Reorient or relocate the receiving antenna.
- Increase the separation between the equipment and receiver.
- Connect the equipment into an outlet on a circuit different from that to which the receiver is connected.
- Consult the dealer or an experienced radio/ TV technician for help.

**(For owners in Canada)**

- FOR USE WITH MODEL NO. AP-V400U (AC ADAPTER).
    - 043-124000-I2 (AC Adapter) is also available for customer using CU-VD20AC/AG/AS.
  - POUR UTILISER AVEC MODELE AP-V400U (ADAPTEUR CA).
    - Le 043-124000-I2 (adapteur CA) est aussi disponible pour les modèles CU-VD20AC/AG/AS.
- This Class B digital apparatus complies with Canadian ICES-003. Cet appareil numérique de la classe B est conforme à la norme NMB-003 du Canada.

**Dear Customer,**

This apparatus is in conformance with the valid European directives and standards regarding electromagnetic compatibility and electrical safety. European representative of Victor Company of Japan, Limited is: JVC Technology Centre Europe GmbH Postfach 10 05 52 61145 Friedberg Germany

**Information for Users on Disposal of Old Equipment**

**[European Union]**

This symbol indicates that the electrical and electronic equipment should not be disposed as general household waste at its end-of-life. Instead, the product should be handed over to the applicable collection point for the recycling of electrical and electronic equipment for proper treatment, recovery and recycling in accordance with your national legislation.



**Attention:**  
This symbol is only valid in the European Union.

By disposing of this product correctly, you will help to conserve natural resources and will help prevent potential negative effects on the environment and human health which could otherwise be caused by inappropriate waste handling of this product. For more information about collection point and recycling of this product, please contact your local municipal office, your household waste disposal service or the shop where you purchased the product. Penalties may be applicable for incorrect disposal of this waste, in accordance with national legislation.

**(Business users)**

If you wish to dispose of this product, please visit our web page [www.jvc-europe.com](http://www.jvc-europe.com) to obtain information about the take-back of the product.

**[Other Countries outside the European Union]**

If you wish to dispose of this product, please do so in accordance with applicable national legislation or other rules in your country for the treatment of old electrical and electronic equipment.

**SOME DO'S AND DON'TS ON THE SAFE USE OF EQUIPMENT**

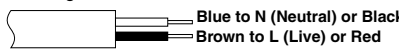
**This equipment has been designed and manufactured to meet international safety standards but, like any electrical equipment, care must be taken if you are to obtain the best results and safety is to be assured.**

- DO read the operating instructions before you attempt to use the equipment.
- DO ensure that all electrical connections (including the mains plug, extension leads and interconnections between pieces of equipment) are properly made and in accordance with the manufacturer's instructions. Switch off and withdraw the mains plug when making or changing connections.
- DO consult your dealer if you are ever in doubt about the installation, operation or safety of your equipment.

DO be careful with glass panels or doors on equipment.  
 DON'T continue to operate the equipment if you are in any doubt about it working normally, or if it is damaged in any way — switch off, withdraw the mains plug and consult your dealer.  
 DON'T remove any fixed cover as this may expose dangerous voltages.  
 DON'T leave equipment switched on when it is unattended unless it is specifically stated that it is designed for unattended operation or has a standby mode. Switch off using the switch on the equipment and make sure that your family knows how to do this. Special arrangements may need to be made for infirm or handicapped people.  
 DON'T use equipment such as personal stereos or radios so that you are distracted from the requirements of road safety. It is illegal to watch television whilst driving.  
 DON'T listen to headphones at high volume, as such use can permanently damage your hearing.  
 DON'T obstruct the ventilation of the equipment, for example with curtains or soft furnishings. Overheating will cause damage and shorten the life of the equipment.  
 DON'T use makeshift stands and NEVER fix legs with wood screws — to ensure complete safety always fit the manufacturer's approved stand or legs with the fixings provided according to the instructions.  
 DON'T allow electrical equipment to be exposed to rain or moisture.

**ABOVE ALL**

- NEVER let anyone especially children push anything into holes, slots or any other opening in the case — this could result in a fatal electrical shock;
- NEVER guess or take chances with electrical equipment of any kind — it is better to be safe than sorry!

**IMPORTANT (for owners in the U.K.)**  
**Connection to the mains supply in the United Kingdom.**  
**DO NOT cut off the mains plug from this equipment.**  
 If the plug fitted is not suitable for the power points in your home or the cable is too short to reach a power point, then obtain an appropriate safety approved extension lead or consult your dealer.  
**In the unlikely event of the plug fuse failing be sure to replace the fuse only with an identical approved type, as originally fitted, and to replace the fuse cover. If the fuse fails again consult your nearest JVC dealer.**  
 If nonetheless the mains plug is cut off be sure to remove the fuse and dispose of the plug immediately, to avoid possible shock hazard by inadvertent connection to the mains supply.  
 If this product is not supplied fitted with a mains plug then follow the instructions given below:  
 DO NOT make any connection to the Larger Terminal coded E or Green.  
 The wires in the mains lead are coloured in accordance with the following code:  
  
 If these colours do not correspond with the terminal identifications of your plug, connect as follows:  
 Blue wire to terminal coded N (Neutral) or coloured black.  
 Brown wire to terminal coded L (Live) or coloured Red.  
 If in doubt — consult a competent electrician.

The I/O button does not completely shut off mains power from the unit, but switches operating current on and off. "O" shows electrical power standby and "I" shows ON.

**Safety Precautions for the Burner**

- Be sure to observe the following precautions. Failing to do so may result in electric shock, fire, injury, or malfunction.
- Do not disassemble, dismantle, or modify the equipment. Requests for repair and inspection should be made to the dealer.
  - Do not insert metal or combustible objects or pour water or other liquids inside the burner.
  - Turn off the power when connecting equipment.
  - Remove the plug when the burner will not be used for a prolonged time or prior to cleaning (electricity flows through the equipment even when the power is off).
  - Do not block the ventilation holes of the burner.
  - Do not use where there is condensation. Suddenly carrying the burner from a cold location to a hot location may result in the formation of drops, which may cause a malfunction or failure.
  - Do not cause the burner to vibrate when discs are in.

**Safety Precautions for Accessories**

- When using the AC adapter, the power cord, and the USB cable, be sure to observe the following precautions. Failing to do so may result in electric shock, fire, injury, or malfunction.

- Do not insert or remove the plug when your hands are wet.
- Fully insert the plug into the outlet.
- Keep dust and metal objects away from the plug.
- Do not damage the cord.
- Place the cord where it will not trip someone up.
- Do not use when thunder can be heard.
- Do not dismantle.
- Do not use for any product other than this one.
- Do not play the provided CD-ROM with an audio player. Doing so may damage the circuits or speakers.

**Safety Precautions for Discs**

Do not use the following discs.

- Cracked discs
- Deeply scratched discs

**Installation**

Do not install in any of the following locations.

- Humid location
- Location of 60 °C or above
- Location subject to direct sunlight
- Location where overheating is likely
- Dusty or smoky locations
- Locations subject to oily smoke or steam such as a kitchen counter or beside a humidifier
- Unstable location
- Bathroom
- Dusty places
- Slanted location

**ATTENTION:**  
**On placing the unit:**  
 Some TVs or other appliances generate strong magnetic fields. Do not place such appliances on top of the unit as it may cause picture disturbance.  
**When moving the product:**  
 Press I/O to turn off the power, and wait at least 30 seconds before unplugging the power cord. Then, wait at least 2 minutes before moving the product.

**Cleaning Procedure**

- IMPORTANT:**
- Be sure to unplug the burner before beginning cleaning.
  - Do not use liquid or aerosol cleaners.
  - Ensure that no moisture or liquid comes into contact with the drive during cleaning.

**Exterior of the Burner:**  
 Wipe dirt off with a dry cloth.

**Disc Tray:**  
 Wipe off dirt with a soft dry cloth.



**Disc:**  
 Gently wipe from the inner edge to the outer edge with a soft cloth.

**Storage:**  
 Make sure that discs are kept in their cases. If discs are piled on top of one another without their protective cases, they can be damaged. Do not put discs in a location where they may be exposed to direct sunlight, or in a place where the humidity or temperature is high. Avoid leaving discs in your car!

**Region Codes**

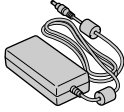
Region codes are numbers for restricting DVD video playback. The world is separated into six regions and each region is identified by a number. If the number for a disc does not match the number for the player, the disc cannot be played on the player. (The initial region code is indicated on the label on the bottom of the burner.)

**Changing the region codes**  
 You can change the region code to play a DVD that has a different code. (The code cannot be changed for some playback software.) When you insert the disc, the Caution screen appears. Follow the on-screen instructions to change the code.  
 The region code for the burner can be changed **4 times** only. The code set the fourth time becomes the final code, so be sure to set a frequently used code. Take sufficient care when changing the code.

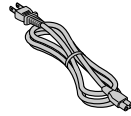
**Disclaimer**

JVC accepts no liability whatsoever for loss of data resulting from inappropriate connections or handling.

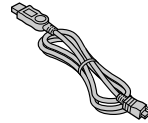
## Accessories



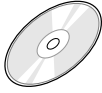
AC Adapter (AP-V400U\*)



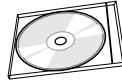
Power Cord



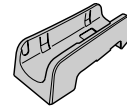
USB Cable



CD-ROM



Blank Disc  
(DVD-R)



Stand

### CAUTION:

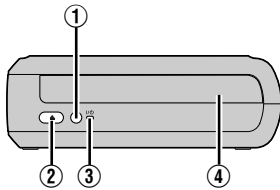
Do not use AC adapter, power cord and USB cable other than those provided with this burner. Doing so may result in electric shock or fire.

### NOTE:

\* 043-124000-I2 (AC Adapter) is also available for customer using CU-VD20AC/AG/AS.

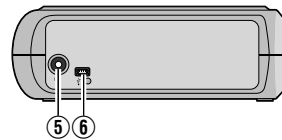
## Guide to Parts and Controls

Front



- ① Power Button (I/O)
- ② Eject Button
- ③ Power Lamp
- ④ Disc Tray

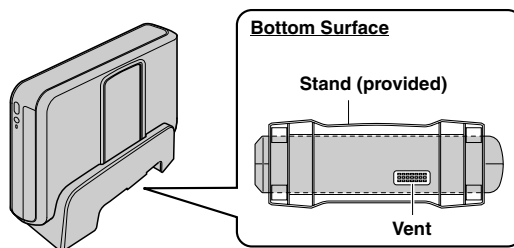
Rear



- ⑤ DC Connector
- ⑥ USB Connector

## Placing the Burner

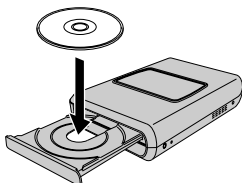
This burner can be used either in the horizontal or vertical orientation. When using in the vertical orientation, align the vent of the burner and the provided stand then place and fix the burner securely on the stand.



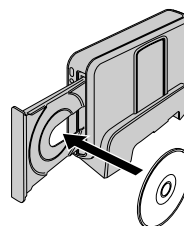
## Inserting A Disc

When handling a disc, be sure not to touch the playback/recording side of the disc.

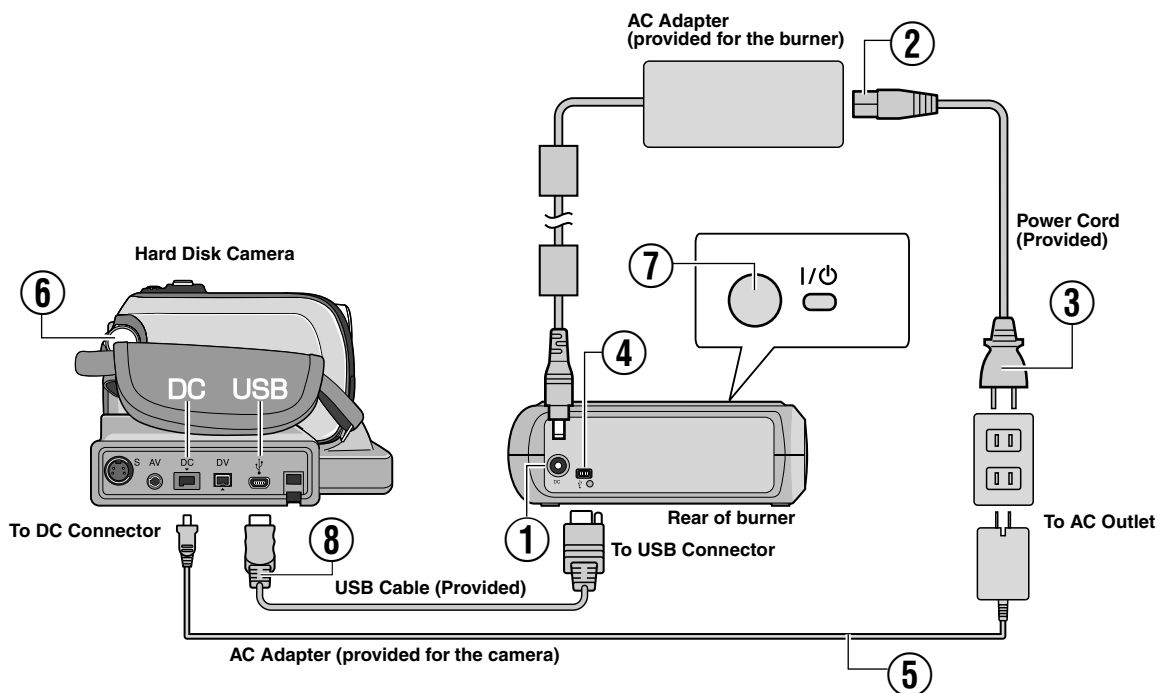
### ■ Horizontal orientation



### ■ Vertical orientation



# Connections



## Connecting to the Camera

- ① Connect the AC adapter to the burner.
- ② Connect the power cord to the AC adapter.
- ③ Connect the power cord to an AC outlet.
- ④ Connect the provided USB cable to the USB connector of the burner.
- ⑤ Connect the camera to an AC outlet. (☞ Refer to the instruction manual for the camera.)
- ⑥ Turn on the camera.
- ⑦ Press the power button (I/⏻) on the front to turn on the burner. The power lamp lights in green.
- ⑧ Connect the provided USB cable to the USB connector of the camera.

### NOTES:

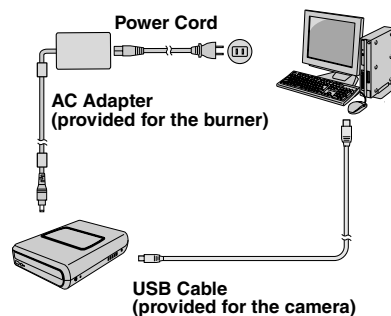
- Insert a disc after [INSERT DISC] is displayed on the camera.
- Be sure to use the provided USB cable to connect the burner and the camera.
- When using a camera, make sure the power is provided with the AC adapter, not the battery.
- Do not subject the camera or burner to vibration or mechanical shock while writing to a disc. Be especially careful if the camera is placed on the burner during writing.
- Refer to "Dubbing Video Files To DVD Discs" in the manual for writing discs.
- The DVD discs that are written with this unit cannot be played with some DVD recorders/players. In that case, use [PLAY DVD] of the camera to playback discs.

## Connecting to PC

- ① Connect the AC adapter to the burner.
- ② Connect the power cord to the AC adapter.
- ③ Connect the power cord to an AC outlet.
- ④ Press the power button (I/⏻) on the front to turn on the burner. The power lamp lights in green.
- ⑤ Turn on the PC.
- ⑥ Connect the burner to the PC with the USB cable.

### NOTE:

To connect the burner to a PC, use the USB cable provided with the camera.



# Writing Software — CyberLink Power2Go 5.5 Lite —

Power2Go 5.5 Lite is software for writing video, image, audio, and other data files to data DVDs.

## System Requirements

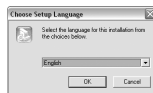
The following shows the system requirements for installation.

|                      |  |
|----------------------|--|
| Operating system     | Windows® XP Home Edition [XP] (pre-installed) or Windows® XP Professional [XP] (pre-installed) |
| CPU                  | Intel® Pentium® III, at least 800 MHz (Intel® Pentium® 4, at least 2 GHz recommended)          |
| Free hard disk space | At least 50 MB for installation<br>At least 5 GB recommended for making DVDs                   |
| RAM                  | At least 128 MB (at least 256 MB recommended)  |
| Connector            | USB 2.0/1.1* connector   |
| Display              | Must be capable of displaying 800 x 600 dots   |

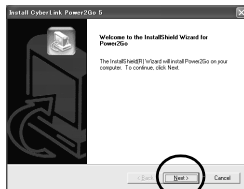
\* If you use USB1.1 cable, it will take approximately 3 hours to write.

## Installation Procedure

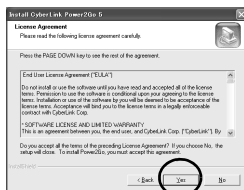
1. Insert the installation CD-ROM in the CD-ROM drive.
2. The language selection screen appears.



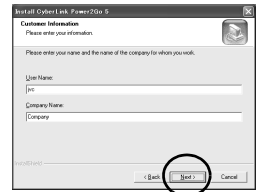
3. The installation start screen appears.  
Click [Next].



4. Confirm the contents and then click [Yes].

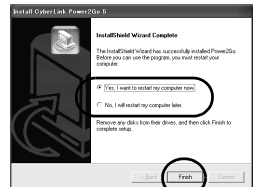


5. Enter the user information and then click [Next].



Follow the on-screen instructions.

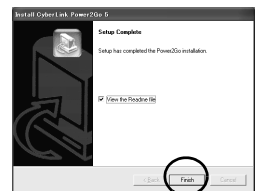
6. Installation starts.
7. The screen on the right appears when the installation is complete.



Select the desired checkbox and then click [Finish].

- If you select [No, I will restart my computer later.], the setup complete screen in step 8.

8. Click [Finish].



The installation is now finished.

### NOTES:

- The above procedure is just a brief explanation on installing the software. For details on operating Power2Go 5.5 Lite, refer to the User's guide, Help, and ReadMe installed at the same time as the software. You can view the User's guide, Help, and ReadMe from the start menu of the PC.
- This product does not apply to write files into CD-R or CD-RW. Also, it is not responded to all the functions of Power2Go 5.5 Lite.
- To get customer support and to register the software, you need the following product key (CD-Key):  
PXNVM-NWE4G-XQD9Q-CU9DX-3FQFN-NAKUS
- Power2Go 5.5 Lite does not support conversion of audio files to MP3 format.
- When the [Enter Activation Key] screen appears while using Power2Go 5.5 Lite, close the screen without entering the activation key.

## CyberLink Power2Go 5.5 Lite Contact Information

For information on CyberLink Power2Go 5.5 Lite or other products, use the following contact information.

### Telephone/fax support

| Location | Language  | Office hours (Mon. to Fri.) | Phone #                   | Fax #            |
|----------|---|-----------------------------|---------------------------|------------------|
| Germany  | English / German / French / Spanish / Italian / Dutch | 9:00 am to 5:00 pm          | +49-700-462-92375         | +49-241-70525-25 |
| Taiwan   | Mandarin  | 9:00 am to 6:00 pm          | +886-2-8667-1298 ext. 333 | +886-2-8667-1300 |

### Paid voice support

| Location | Language | Lines are open (Mon. to Fri.) | URL   |
|----------|----------|-------------------------------|---|
| U.S.A.   | English  | 1:00 pm to 10:00 pm CST       | <a href="http://www.cyberlink.com/english/cs/support/new_site/voice_support.jsp">http://www.cyberlink.com/english/cs/support/new_site/voice_support.jsp</a> |

### Support web/e-mail

| Language                            | URL/e-mail address  |
|-------------------------------------|---|
| English                             | <a href="http://www.cyberlink.com/english/cs/support/new_site/support_index.html">http://www.cyberlink.com/english/cs/support/new_site/support_index.html</a> |
| German / French / Spanish / Italian | goCyberlink@aixtema.de  |

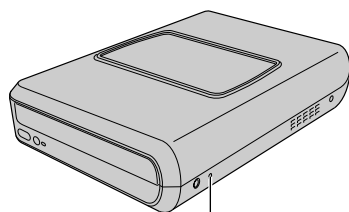
## Troubleshooting

If you think there is a malfunction, first check the following items. If you are still unable to solve the problem, consult your local JVC dealer.

| Trouble   | Cause/Action   |
|---|--|
| Cannot turn the power on.   | <ul style="list-style-type: none"> <li>● Make sure the AC adapter is connected properly.</li> </ul>  |
| The camera/PC is not recognized.  | <ul style="list-style-type: none"> <li>● Make sure the USB cable is connected properly.</li> </ul>   |
| The burner or AC adapter is hot.  | <ul style="list-style-type: none"> <li>● This is not a malfunction. If the burner is abnormally hot, remove the AC adapter and consult the dealer from which you purchased the burner.</li> </ul>  |
| Cannot open the disc tray.  | <ul style="list-style-type: none"> <li>● A disc cannot be ejected by pressing the eject button if data is being written to the disc. Wait until writing finishes.</li> <li>● If a disc cannot be ejected with the eject button because of a failure or a malfunction caused by, for example, the burner being dropped, use the force eject hole to eject the disc. (See below.)</li> </ul>   |
| Writing fails.  | <ul style="list-style-type: none"> <li>● Make sure an appropriate disc is being used. (See pg. 3, 8)</li> <li>● Use discs recommended for the burner. (See pg. 8)</li> <li>● Insert the disc with the label facing up.</li> <li>● Make sure the writing surface of the disc is not damaged.</li> <li>● Make sure the disc tray is not dirty.</li> <li>● Writing to irregularly shaped discs such as heart-shaped discs or octagonal discs is not possible.</li> <li>● Check the writing speed of the disc being used.</li> </ul> |
| Reading fails.  | <ul style="list-style-type: none"> <li>● Insert the disc with the label facing up.</li> <li>● Make sure the writing surface of the disc is not damaged.</li> <li>● Writing to irregularly shaped discs such as heart-shaped discs or octagonal discs is not possible.</li> <li>● Any CD recorded using the packet-write method cannot be played.</li> <li>● Any CD that does not comply with standards such as the CD-DA standard (copy-control CDs) cannot be played.</li> </ul>  |
| Writing/reading at maximum speed is not possible.   | <ul style="list-style-type: none"> <li>● Reading at maximum speed may not be possible if a non-standard disc is used.</li> <li>● Use discs recommended for the burner. (See pg. 8)</li> </ul>  |
| Commercial DVDs cannot be played when the burner is connected to PC.                                    | <ul style="list-style-type: none"> <li>● Check the region code. (See pg. 3)</li> </ul>   |
| It is impossible to dub the DVD discs, which were written with this burner, with DVD recorder with HDD. | <ul style="list-style-type: none"> <li>● Connect the burner to the camera, playback using [PLAY DVD] function of the camera, and dub the DVD discs with the DVD recorder. (Refer to "Connecting to a TV, VCR or DVD Recorder" or "Using a DVD Burner for Dubbing" in the camera's manual.)</li> </ul>  |

## Force Eject Hole

If a disc cannot be ejected with the eject button because of a malfunction, use this hole to eject the disc.



Force eject hole

### Procedure

- ① Turn off the burner and disconnect the USB cable and AC adapter.
- ② Insert a thin rod of about 10 cm long into the force eject hole located on the left side of the burner. The disc tray will be ejected for about 10 mm.
- ③ Pull out the disc tray manually and take out the disc.

### NOTE:

Be sure to place the burner horizontally.

## Copyrights and Trademarks

### Copyrights

Duplicating copyright protected material, for other than personal use, without the permission of the copyright holder is prohibited by copyright law.

### Registered Trademarks and Trademarks

- Windows® is either registered trademark or trademark of Microsoft Corporation in the United States and/or other countries.
- Other company and product names mentioned herein are registered trademarks and/or trademarks of their respective holders.

# Specifications

## For general

|  |  |            |               |
|--|--|------------|---------------|
| Power supply                             | DC 12 V  |            |               |
| Power consumption (during data transfer) | Approx. 5.2 W/1.4 A                            |            |               |
| Dimensions of main unit (W x H x D)      | 171 x 56 x 262 mm (6-3/4" x 2-1/5" x 10-3/10") |            |               |
| Weight of main unit                      | Approx. 1.4 kg (3.1 lbs)                       |            |               |
| Operating temperature                    | 0 °C to 40 °C (32 °F to 104 °F)                |            |               |
| Operating humidity                       | 35 % to 80 %                                   |            |               |
| Storage temperature                      | -20 °C to 50 °C (-4 °F to 122 °F)              |            |               |
| Laser Power                              | For DVD  | Wavelength | 653 to 663 nm |
|  |  | Output     | 1.0 mW        |
|  | For CD   | Wavelength | 770 to 810 nm |
|  |  | Output     | 0.4 mW        |

## When connected to the camera

|                  |                               |  |  |
|------------------|-------------------------------|--|--|
| Interface        | High Speed USB 2.0            |  |  |
| Supported discs  | DVD-R, DVD-RW                 |  |  |
| Recording format | Everio                        | DVD video (motion picture only)  |  |
|                  | High definition Everio        | Data DVD (motion picture, still picture)                               |  |
| Recording time   | Everio (for each 4.7 GB disc) | Approx. 30 minutes (approx. 90 minutes of video recorded in fine mode) |  |
|                  | High definition Everio        | Refer to the instruction manual for the high definition Everio.        |  |
| Interface cable  | Provided USB cable            |  |  |

## When connected to a PC

|                             |   |  |  |
|-----------------------------|---|--|--|
| Interface                   | High Speed USB 2.0                                    |  |  |
| Writing speed (for USB 2.0) | Writing   | DVD-R  | Maximum 8x   |
|                             |   | DVD-RW   | Maximum 4x   |
|                             |   | DVD-R DL   | Maximum 4x   |
|                             | Reading   | DVD-R  | Maximum 12x  |
|                             |   | DVD-RW   | Maximum 12x  |
|                             |   | DVD-R DL   | Maximum 8x   |
|                             |   | DVD-ROM  | Maximum 5x   |
|                             |   | CD-R/RW/ROM  | Maximum 10x  |
| Supported disc              | DVD   | Writing  | DVD-R, DVD-R DL, DVD-RW                                  |
|                             |   | Reading  | DVD-ROM, DVD-VIDEO, DVD-R, DVD-R DL, DVD-RW              |
|                             | CD  | Reading  | CD-ROM, CD-DA, CD Extra, Video-CD, Mixed-CD, CD-R, CD-RW |
| Supported operating systems | Windows® XP Home Edition/Professional (pre-installed) |  |  |
| Interface cable             | USB cable provided with the camera                    |  |  |
| Supported software          | Provided for the camera                               | CyberLink PowerProducer 3 NE/PowerCinema NE for Everio (Authoring) |  |
|                             | Provided for the burner                               | CyberLink Power2Go 5.5 Lite (data writing)                         |  |

## Recommended discs

|          |                          |
|----------|--------------------------|
| DVD-R    | JVC, TDK, Verbatim, SONY |
| DVD-R DL | JVC, Verbatim            |
| DVD-RW   | JVC                      |

## Interface cable

|   |
|---|
| Mini USB type A and type B, USB 1.1 and 2.0 compliant |
|---|

## AC adapter (AP-V400U)

|                   |                                 |
|-------------------|---------------------------------|
| Power requirement | AC 110 V to 240 V~, 50 Hz/60 Hz |
| Output            | DC 12 V ---, 4 A                |

## NOTES:

- Only 12 cm discs can be used with this burner.
- DVD-R DL discs can be used when the burner is connected to a high definition Everio or a PC.
- A double-layer DVD-RW disc cannot be used.
- Optimal performance of the burner may not be possible depending on the disc used. Using discs of manufacturers for which compatibility has been confirmed is recommended.
- The appearance and specifications of the product may change without notice.
- Any CD recorded using the packet-write method cannot be played.
- Operation is not guaranteed for any CD not compliant with the CD-DA standard (copy control CD).
- When connected to the PC, it may not be possible to read the audio files depending on the music CDs (CD-DA). In this case, make use of applications such as Windows Media Player.



**JVC**

## Free Manuals Download Website

<http://myh66.com>

<http://usermanuals.us>

<http://www.somanuals.com>

<http://www.4manuals.cc>

<http://www.manual-lib.com>

<http://www.404manual.com>

<http://www.luxmanual.com>

<http://aubethermostatmanual.com>

Golf course search by state

<http://golfingnear.com>

Email search by domain

<http://emailbydomain.com>

Auto manuals search

<http://auto.somanuals.com>

TV manuals search

<http://tv.somanuals.com>