

JVC®

DIGITAL VIDEO RECORDER

VR-609

Client Software INSTRUCTIONS



Contents

1. Overview	4
1.1 In This Manual	4
1.2 CD-ROM Content	4
1.3 Operating Environment	4
1.4 Overview	4
2. Installation	5
2.1 Installation Procedures	5
2.2 Running Procedure	8
3. Client Live Mode (VR-609 Client-SW-(M))	9
3.1 Functions	9
3.2 Descriptions	10
(1) Minimize / Exit	10
(2) Title/Boarder Display	10
(3) Search	10
(4) Connect	11
(5) Display Mode	12
(6) Zoom/Focus Control	13
(7) PTZ Channel Selection	13
(8) Pan Tilt Control	13
(9) Channel Selection	14

- 4. Client Search Mode (VR-609 Client-SW-(S))15**
 - 4.1 Functions15**
 - 4.2 Descriptions16**
 - (1) Minimize / Exit16
 - (2) Connect / Disconnect16
 - (3) Time/Date Search17
 - (4) Event Search18
 - (5) Play Button19
 - (6) Download (Remote Backup)21
 - (7) Play (9CH Player)23
 - 1). Open24
 - 2). Play24
 - 3). Print24
 - 4). Printer Setup25
 - 5). Create AVI25
 - (8) Channel Selection26
- 5. 9 Channel DVR27**

1. Overview

1.1 In This Manual

This manual describes the features, installation, and how to use of 9ch Embedded DVR (Digital Video Recorder) Client Software (Client SW) to remotely view, search, and download an image.

* All Product names stated in this manual are trademarks or registered trademarks of their respective companies. Marks such as ©, ® are omitted in this manual.

1.2 CD-ROM Content

Following files and folder are in CD-ROM.

(1)"VR-609 ClientSW" Folder

Client software. As double click "setup.exe" as start installation.

(2)"VR-609 ClientSW Manual(Japanese).pdf"

Instructions of this software.(Japanese)

(3)"VR-609 ClientSW Manual(English).pdf"

Instructions of this software.(English)

1.3 Operating Environment

System Requirements

PC	Type	PC/AT compatible machine
	CPU	Pentium III 500MHz and more
	Memory	64MB and more
	HDD	Free space 12MB and more
Compatible OS	Windows 98/ 2000/ Me/ XP	

1.4 Overview

Installer/ Menu/ buttons are written in English.

Client SW has the following functions.

- Live Mode
- Search Mode
- Player Mode
- PTZ camera control
- Download(Back-up) Mode
- Support converting to AVI format to play with Windows Media Player

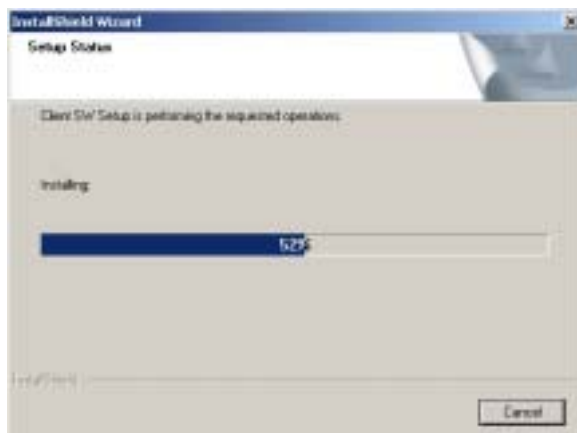
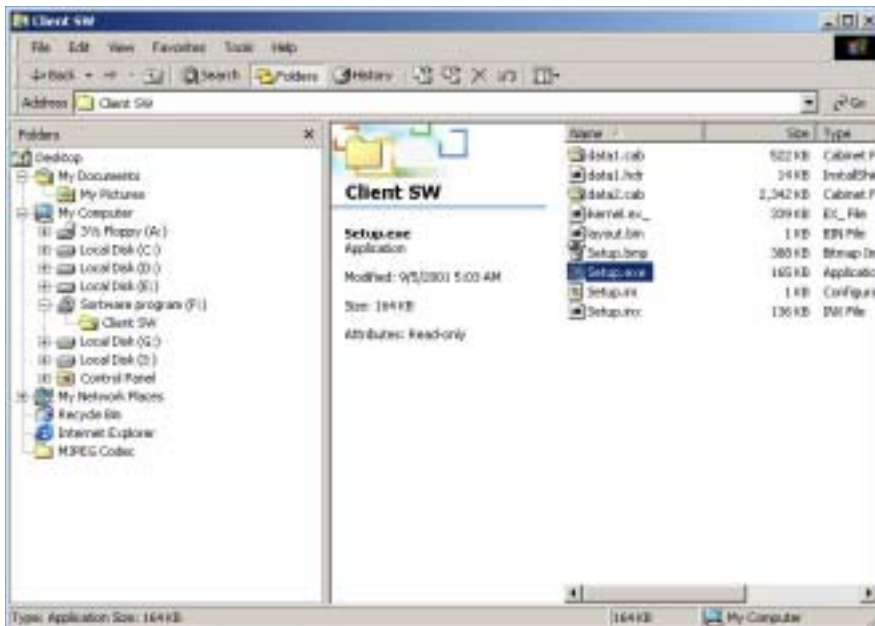
2. Installation

2.1 Installation Procedures

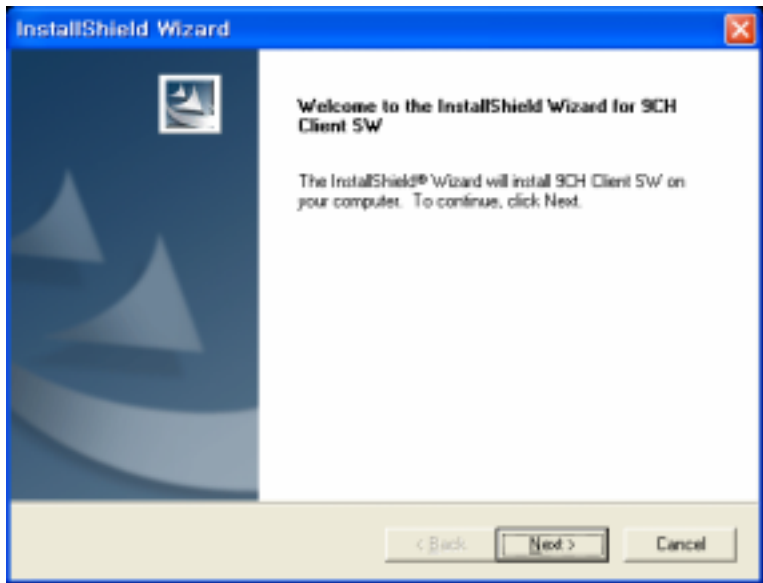
Please insert Client_SW CD to your PC and will be opened installation files.

Double Click Setup Icon and select a language you want to install to start installation.

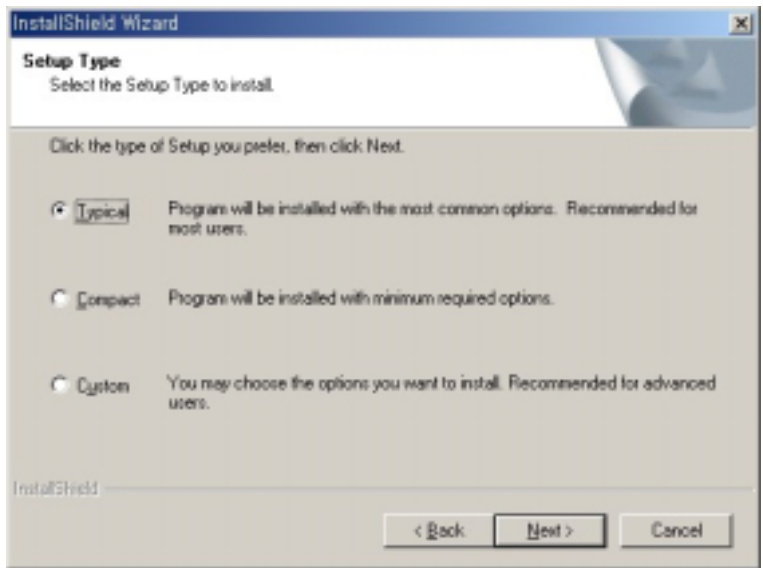
Click Yes button and Installation will be proceeded shown as below.



Click Next button to continue it.

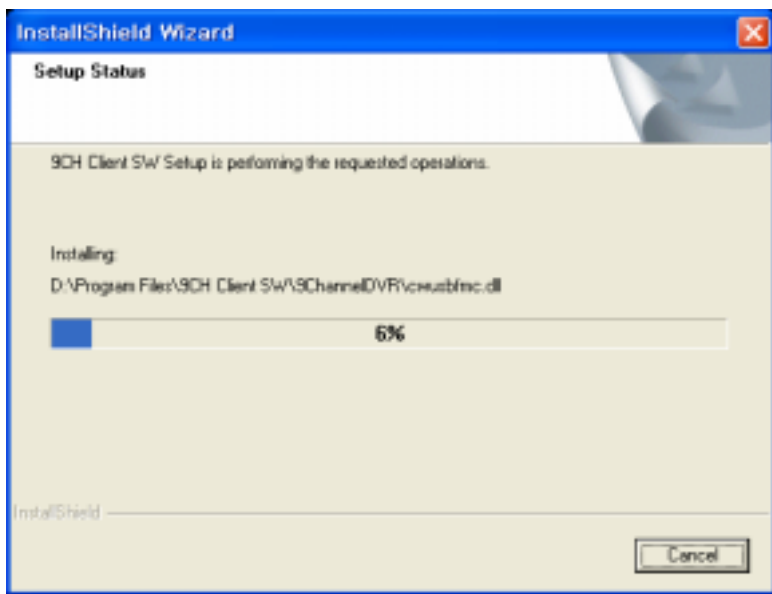


Select a setup type to install.

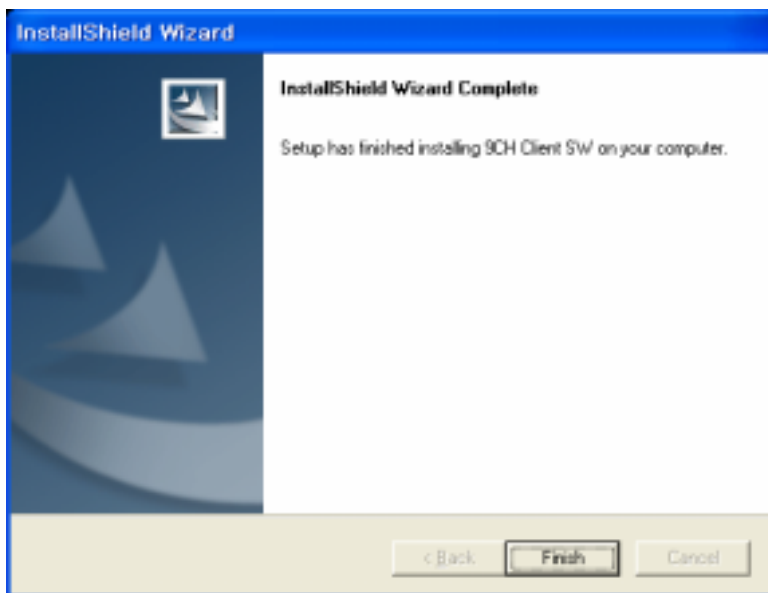


- Typical : Standard (Please usually choose this item.)
- Compact : Minimum
- Custom : For advanced users

Setup status will be proceeded.



Setup has finished and click Finish button to exit installation.



2.2 Running Procedure

CLIENT SW Icon will be displayed on your desk top



VR-609
Client-SW-(M)

Press the Icon to run DVR Client Live Mode



3. Client Live Mode (VR-609 Client-SW-(M))

3.1 Functions



- (1) Minimize, Exit Button
- (2) Title/Boarder Display Buttons
- (3) Search Button
- (4) Connect Button
- (5) Display Mode Buttons
- (6) Zoom/Focus Control Buttons
- (7) PTZ Channel Selection Button
- (8) Pan Tilt Control Button
- (9) Channel Selection Buttons

3.2 Descriptions

(1) Minimize/Exit

Minimize program, exit the Client Live mode program.

(2) Title/Boarder Display Buttons

Title: Display channel name, recording status(red circle), date, and time

Boarder: Display boarder among each channel.



<Title/Boarder On>



<Title/Boarder Off>

(3) Search

Click Search Button to open Search program mode in another windows.



(4) Connect

Click Connect button to connect to the DVR Client Live mode.

Add a list to connect.

- Type Server Name what you be named.
- Type IP Address and Port Number of the DVR. (Default setting : 80)
- Please input the PORT Number into the "Server" column.
- Click Add button and server name will be added in the server list shown as below.



Image of channel 1 will displayed in full screen mode at the first connection as the default.



(5) Display Mode

Client SW displays 1,4,9ch mode.



1ch Mode



4ch Mode



9ch Mode



(6) Zoom/Focus Control



+ : Zoom In - : Zoom Out



+ : Focus In - : Focus Out

* It only works one time at each press.

(7) PTZ Channel Selection



Select ch#1 for Pan Tilt Zoom control





Select ch#9 for Pan Tilt Zoom control

(8) Pan Tilt Control



 Up Button

 Down Button

 Left Button

 Right Button

(9) Channel Select



Select a channel to be displayed

Ex) Select ch#9 : Ch#9 will be displayed on top left side of 9ch mode



CH9	CH1	CH2
CH3	CH4	CH5
CH6	CH7	CH8

4. Client Search Mode (VR-609 Client-SW-(S))

- * In the case to move to Search mode from Live mode, it automatically moves to the site the current Live mode has.
- * Only one user can access to the Search Mode displaying the following message "Server is preoccupied. Please try again later" if more than one users are trying to access to same Search mode of DVR at the same time.

4.1 Functions



- (1) Minimize, Exit Button**
- (2) Connection/Disconnect Button**
- (3) Time Date Search Button**
- (4) Event Search Button**
- (5) Playback Control Button**
- (6) Download Button**
- (7) DVR Player**
- (8) Channel Selection Button**

4.2 Descriptions

(1) Minimize / Exit

Minimize program, exit the Client Search mode program

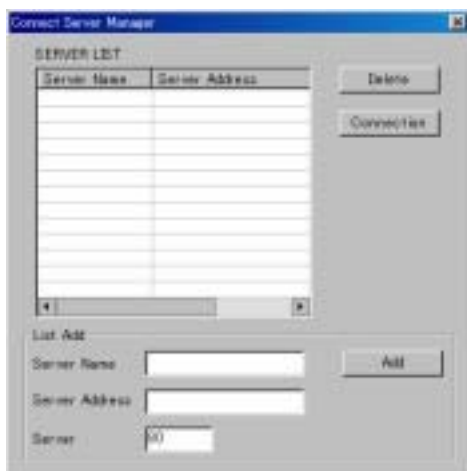


(2-1) Connect

Click Connect button to connect to the DVR Client Search mode.

Add a list to connect

- Type Server Name what you be named.
- Type IP Address and Port Number of the DVR. (Default setting : 80)
- Please input the PORT Number into the "Server" column.
- Click Add button and server name will be added in the server list shown as below.



(2-2) Disconnect

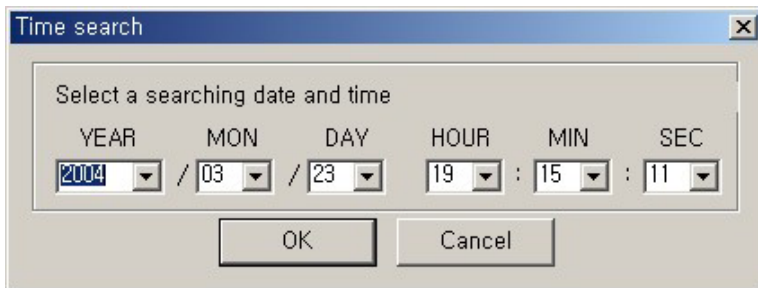
Disconnect the current connection to the DVR.

Message 'Please wait a 10 second...' will be displayed.




Please wait a 10 second...

(3) Time/Date Search

Click the Time/Date Search button to search a specific time and date.



* How to use Time/Date Remote Search

- Set up the time you want to search, and click the OK button.
- You can select the both of play or reverse play as you wish.
( Play Button,  Backward Play Button,  Pause Button)
- Select the channel number you want to play back.

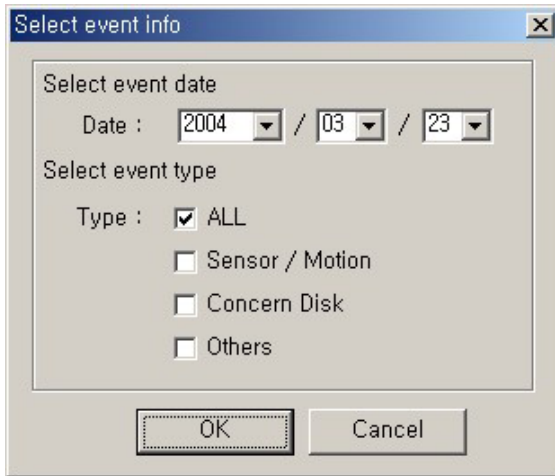


(4) Event Search

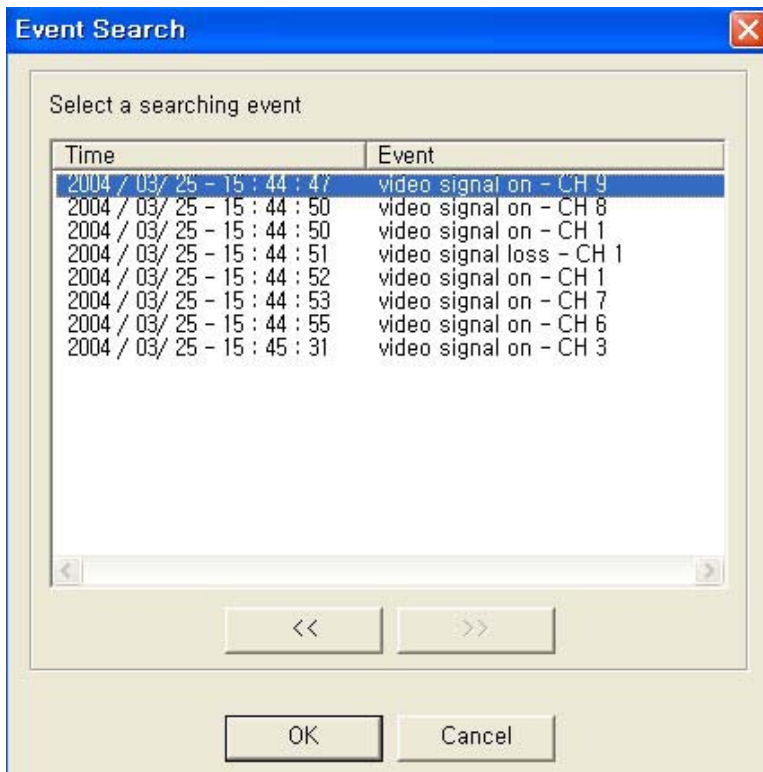
Click the Event Search button to search specific event lists of DVR.




* How to use Event Remote Search

- Click OK button after you select the time and event type you want to search.



- Click OK button after you select the time and list you want to search in the Event List.



- You can select the both of play or reverse play as you wish.
( Play Button,  Backward Play Button,  Pause Button)
- You can select the channel you want to playback.



(5) Play

Click Play button after searching a specific date & time.



Play Button

The playback speed will be increased as the button is clicked. (5 Speed mode : 0,1,2,3,4 x)



Backward Play Button

The reverse playback speed will be increased as the button is clicked.(5 Speed mode : 0,1,2,3,4 x)



Pause Button

Caution!

While a user is retrieving the image through Web browser like MS Internet Explorer and when another user connects to the same server and tries to retrieve the image through Client S/W at the same time, the Web browser user might meet the program locked-up.

➔ This is because the image retrieving from server is only allowed one client at a time. The web browser user will not be warned by any message of it.

(6) Download (Remote Backup)

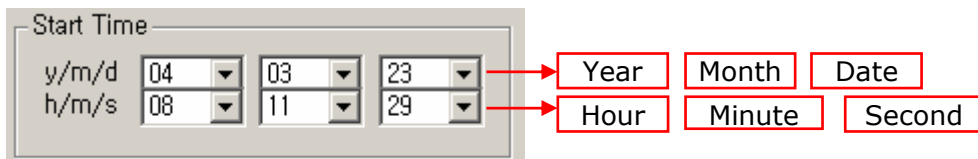
Click Download button for remote backup.

- Message 'Please wait a 10 second...' will be displayed.
- Type IP address of DVR what you want to backup Live or Playback data.
- Choose a channel what you want.

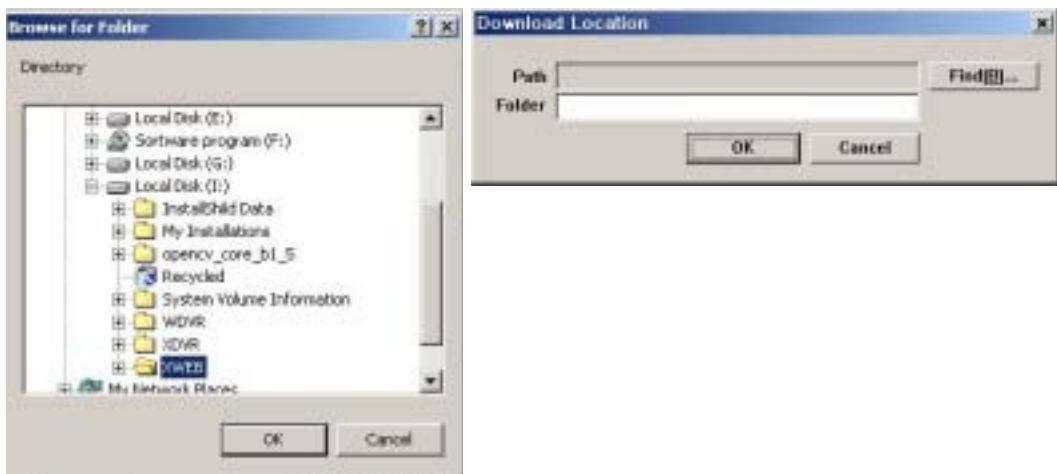
Please wait a 10 second...



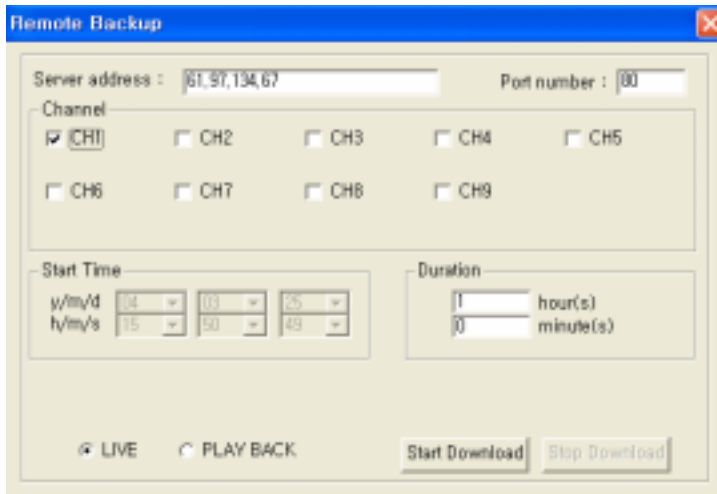
- Select type hour(s) and minute(s) to be backed up (Playback only).
- Select duration time.(Live & Playback mode)
- Click Start Download button to start it.



- Select Download Location by clicking Find button and press O.K button.



- The data will be backed up to the specific folder you choose.



*** Caution!**

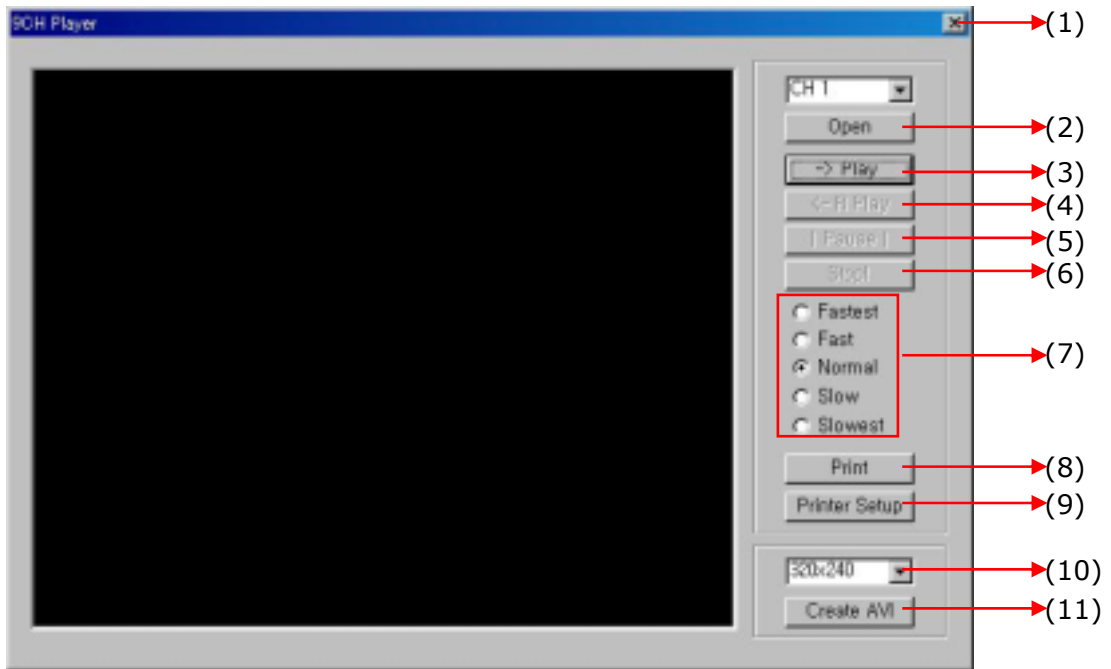
If by chance the user selects a channel of which the image is not transmitted or hidden as a covert channel by the server(VR-609) and tries to download the images, then the downloading animation might not be ended, and keep showing the animation.

➔ This is because the client keeps waiting for the image data from the server, but the server is not setup to transmit the images to the client by the server administrator.

When selecting a folder where the image data is stored, please avoid to designate an folder in external device, like USB memory stick or IEEE1394 devices. Otherwise, the user can meet the system locked-up or unusual error messages.

(7) PLAY (9CH Player)

Click PLAY button to play downloaded data from the DVR.



(1) Exit Button : Exit 9CH Player

(2) Open Button

(3) Play Button

(4) Backward Play Button

(5) Pause Button

(6) Stop Button

(7) Play Speed Selection Button : Select 5 various speed mode to play downloaded data.

(8) Print Button : Print a current viewing image

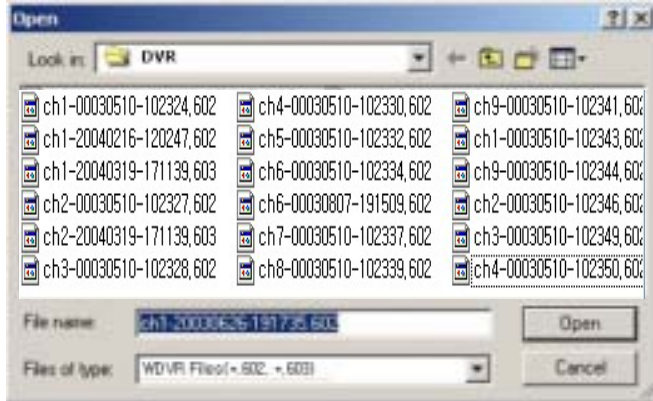
(9) Printer Setup Button

(10) Resolution Selection Button

(11) Create AVI Button

1). Open

- Open a downloaded data of the DVR and click O.K button to be played.
- 9channel DVR files : file_name.601 or 602
- Will be converted to AVI format clicking **(5).Create AVI Button**



2). Play

- Click Open, and select and playback the file you want.

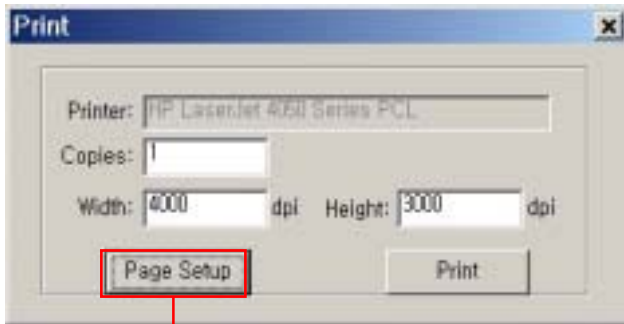


3). Print

- If you want to print out a specific image while playing back, click the Print button then the image will be printed through the printer you setup in print mode.

4). Printer Setup

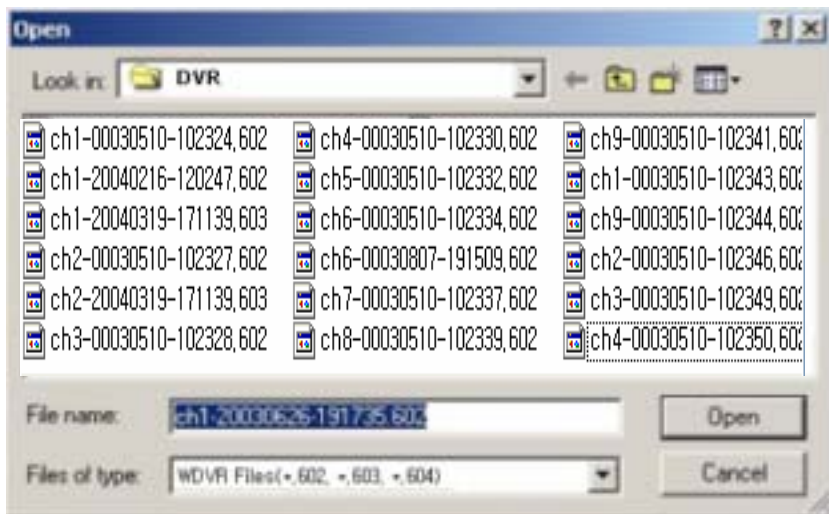
- Click Printer Setup Button to select Page Setup or print a image.
- Type a number of Copies, Width, and Height.



Page Setup: You can select printer, paper size, and all about Printer configuration same way as Windows Printer Configuration.

5). Create AVI

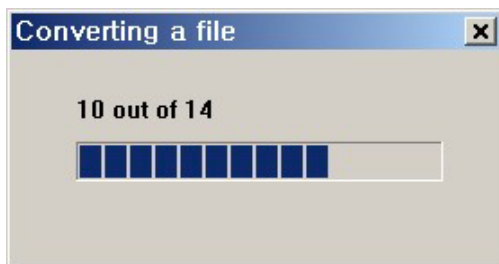
- Click the Resolution Selection Button and select the resolution you want to make with AVI format.(Three mode : 320*240, 400*300, 640*480)
- Select a file to convert to AVI format and click O.K button.If the target file size is 1GByte or more, the file is automatically divided into the 1GByte. The created file should be xxx.avi, xxx_1.avi, and xxx_2.avi.



- Save as AVI file name you want and click Save button.



- File will be converting to AVI format and displayed on Windows Media Player.



(8) Channel Selection



Select a channel to be played.

Ex) Select ch#1 : The recorded data of Ch#1 will be played.



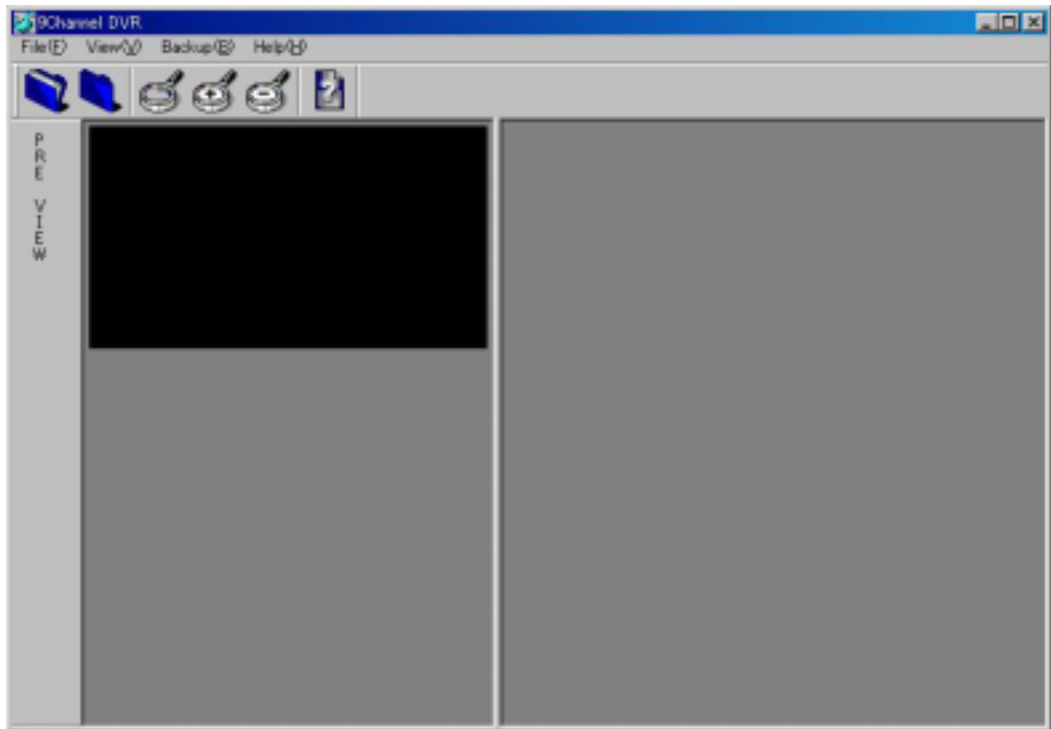
5. 9Channel DVR

The 9Channel DVR program is used to

1. The still picture recorded on FDD or Flash Memory can be displayed.
2. The both of "Remote Backup" and "9CH Player" function can be used.

* For "Remote Backup", please refer to 21 page.

For "9CH Player", please refer to 23 page.



Free Manuals Download Website

<http://myh66.com>

<http://usermanuals.us>

<http://www.somanuals.com>

<http://www.4manuals.cc>

<http://www.manual-lib.com>

<http://www.404manual.com>

<http://www.luxmanual.com>

<http://aubethermostatmanual.com>

Golf course search by state

<http://golfingnear.com>

Email search by domain

<http://emailbydomain.com>

Auto manuals search

<http://auto.somanuals.com>

TV manuals search

<http://tv.somanuals.com>