

# JVC

## MICRO COMPONENT SYSTEM

### UX-G355

—Consists of CA-UXG355 and SP-UXG355

For tuning off the demonstration display, see "Display Demonstration" on page 3.



Thank you for purchasing a JVC product.

## INSTRUCTIONS

LVT1981-015A(USA,UB,UW)  
0209YAMMDWCDT

©2009 Victor Company of Japan, Limited

### Warnings, Cautions and Others

**CAUTION**  
The **⏻** button in any position does not disconnect the mains line.  
Disconnect the mains plug to shut the power off completely (the STANDBY lamp goes off).  
The MAINS plug or an appliance coupler is used as the disconnect device, the disconnect device shall remain readily operable.

- When the system is on standby, the STANDBY lamp lights red.
- When the system is turned on, the STANDBY lamp goes off. The power can be remote controlled.

**CAUTION:**  
To reduce the risk of electrical shocks, fire, etc.:

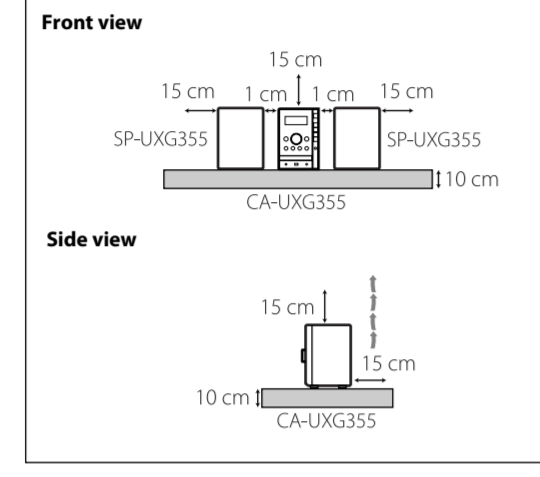
- Do not remove screws, covers or cabinet.
- Do not expose this appliance to rain or moisture.

**IMPORTANT FOR LASER PRODUCTS**

- CLASS 1 LASER PRODUCT**
- CAUTION:** Do not open the top cover or cabinet. There are no user serviceable parts inside the unit; leave all servicing to qualified service personnel.
- CAUTION:** Visible and/or invisible class 1M laser radiation when open. Do not view directly with optical instruments.
- REPRODUCTION OF LABEL: CAUTION LABEL, PLACED INSIDE THE UNIT.

**CAUTION: Proper Ventilation**  
To avoid risk of electric shock and fire, and to prevent damage, locate the apparatus as follows:

- Front: No obstructions and open spacing.
- Sides/Top/Back: No obstructions should be placed in the areas shown by the dimensions below.
- Bottom: Place on the level surface. Maintain an adequate air path for ventilation by placing on a stand with a height of 10 cm or more.



**CAUTION:**

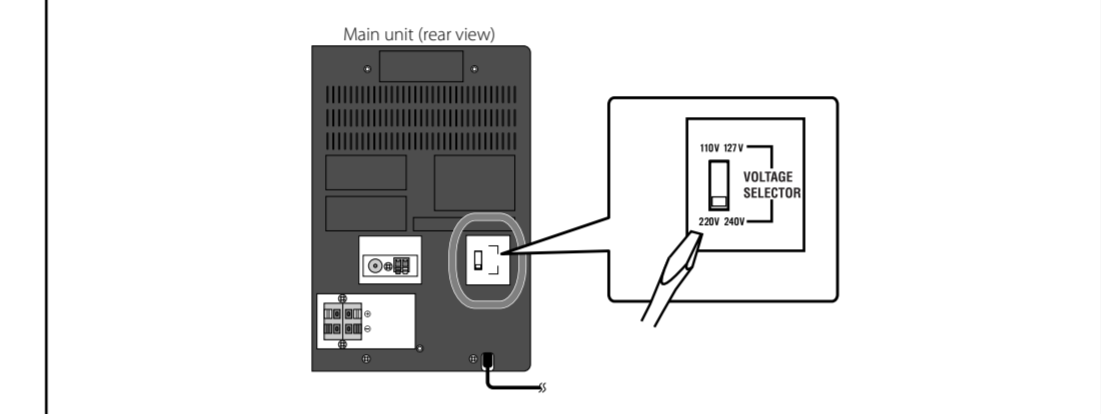
- Do not block the ventilation openings or holes. (If the ventilation openings or holes are blocked by a newspaper or cloth, etc., the heat may not be able to get out.)
- Do not place any naked flame sources, such as lighted candles, on the apparatus.
- When discarding batteries, environmental problems must be considered and local rules or laws governing the disposal of these batteries must be followed strictly.
- Do not expose this apparatus to rain, moisture, dripping or splashing and that no objects filled with liquids, such as vases, shall be placed on the apparatus.

**CAUTION:**  
Excessive sound pressure from earphones or headphones can cause hearing loss.

**CAUTION**  
Battery shall not be exposed to excessive heat such as sunshine, fire or the like.



### Mains (AC) Line Instruction (not applicable for Australia and Hong Kong)



### Precautions

**Notes on the power cord**

- When you are away on travel or otherwise for an extended period of time, remove the plug from the wall outlet.
- When unplugging the System from the wall outlet, always pull the plug, not the power cord.
- Do not handle the power cord with wet hands.
- Disconnect the power cord before cleaning the System or moving the System.
- Do not alter, twist or pull the power cord, or put anything heavy on it, which may cause fire, electric shock or other accidents.
- If the cord is damaged, consult a dealer and have the power cord replaced with a new one.

**Avoid moisture, water, dust, and high temperatures**

- Do not place the System in moist or dusty places.
- If water gets inside the System, turn off the power and remove the plug from the wall outlet, then consult your dealer. Using the System in this state may cause a fire or electrical shock.
- Do not expose the System to direct sunlight or place it near a heating device.

**Notes on installation**

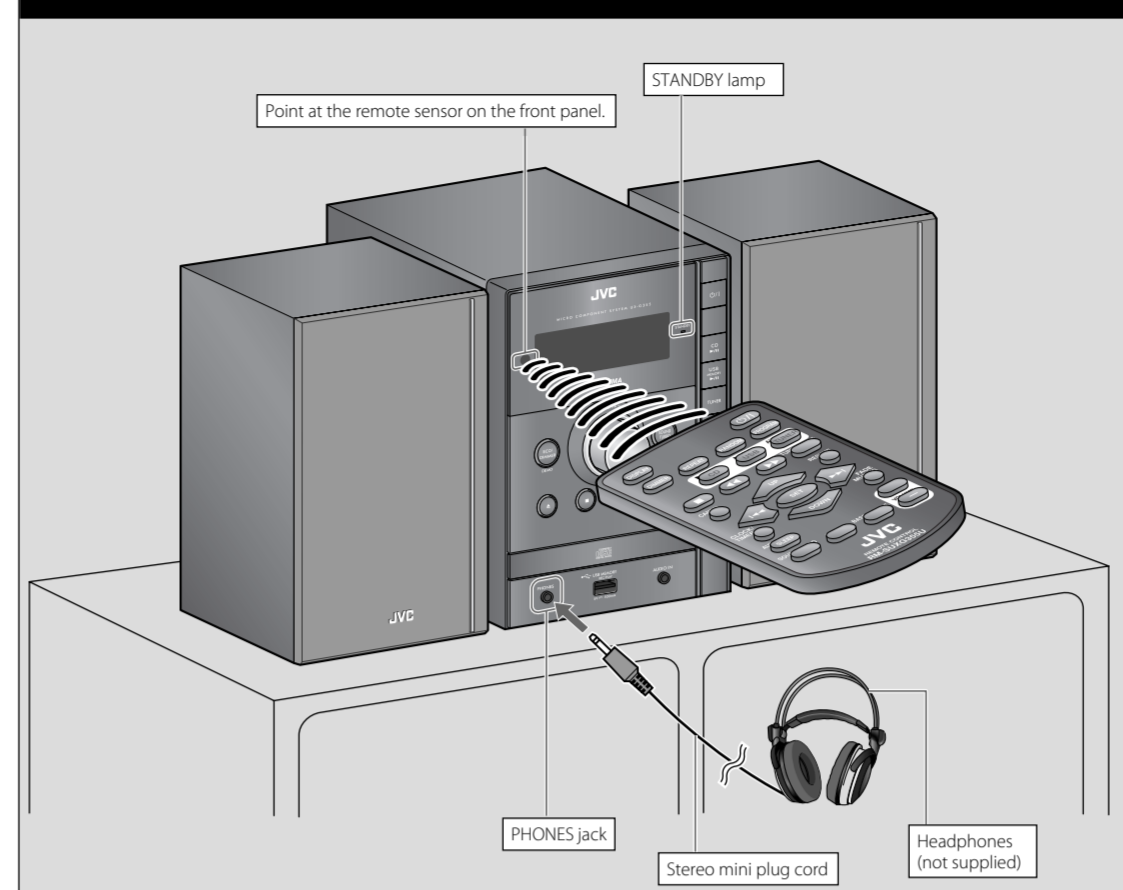
- Select a place which is level, dry and neither too hot nor too cold—between 5°C and 35°C.
- Do not install the System in a place subject to vibrations.
- Do not put heavy objects on the System.

**To prevent malfunction or damage of the System**

- Do not insert any metallic objects, such as wires, hairpins, coins, etc. into the System.
- Do not block the vents.

**There are no user-serviceable parts inside. If anything goes wrong, unplug the power cord and consult your dealer.**

### Basic and Common Operations



**Display Demonstration**  
When you plug in the System, the display demonstration automatically starts. To cancel the display demonstration, press and hold DEMO until "DEMO CLR" is displayed while the System is on standby.

- When the ECO Mode is activated, the display demonstration does not work (and you cannot deactivate it).
- When the display demonstration is activated, it also starts if no operation is done for about 2 minutes while the System is turned on.

**Using Headphones**  
Be sure to turn down the volume before connecting or putting on the headphones.

- Connecting the headphones will deactivate the speakers.
- Sound adjustments also affect the sound through the headphones.

**NOTE:**  
DO NOT turn off (standby) the System with the volume set to an extremely high level; otherwise, the sudden blast of sound can damage your hearing, speakers and headphones when you turn on the System or start playback.

The operations on pages 4 to 6 are explained using the remote control, unless mentioned otherwise. However, if the System has the same or similar button names, they can also be used for the operations.

To	Press		Indication/Result
	System	Remote	
Turn on or off (standby) the power	<b>⏻</b>	<b>⏻</b>	The STANDBY lamp on the System turns off/on.
Select a source	<b>CD</b> <b>MP3</b> <b>USB</b>	<b>▶/II</b> <b>CD</b> <b>▶/II</b> <b>USB</b>	See "Playing Back a Disc/USB Mass Storage Class Device" on page 4.
Adjust the volume	<b>VOLUME</b> <b>+</b> <b>-</b>	<b>▶/II</b> <b>TUNER</b> <b>▶/II</b> <b>TUNER</b> <b>▶/II</b> <b>AUDIO IN</b>	Adjustable range: Level 0 ("VOL MIN") to level 40 ("VOL MAX").
Drop the volume in a moment	—	<b>FADE</b> <b>MULTING</b>	To restore the volume, press again, or adjust the volume level.
Emphasize the sound (Sound Turbo)	<b>SOUND</b> <b>TURBO</b>	<b>SOUND</b> <b>TURBO</b>	The S.TURBO indicator lights up. To cancel this function, press again.
Reinforce the bass sound (Hyper Bass Sound)	—	<b>HBS</b>	The BASS indicator lights up. When Sound Turbo function is activated (see above), the BASS indicator goes off and HBS button does not work. To cancel this function, press again.
Adjust the tone (Bass/Treble)	—	<b>BASS/TREBLE</b> <b>+</b> <b>-</b> <b>VOLUME</b> <b>+</b> <b>-</b>	Press once for adjusting the bass level; twice for treble level, then, press VOLUME +/-. Adjustable range: -3 to +3.
Dim the display	<b>ECO/</b> <b>ECOLOGY</b> <b>DEMO</b>	<b>DIMMER</b>	You can dim the display window and illumination lamp. While the System is turned on... <b>▶/II</b> → DIM 1 → DIM 2 → DIM OFF (Canceled)
Set the clock and timer	—	<b>CLOCK/</b> <b>TIMER</b>	For setting the clock, see "Setting the Clock and Using Timers" on page 6.
Change the display information	—	<b>DISPLAY</b>	The display information changes as follows: FM/AM: Clock → Frequency CD: Current track elapsed time → Clock MP3/WMA: Current track elapsed time → ID3 tag → Current group/track → Clock
Set the ECO (Ecology) Mode	<b>ECO/</b> <b>ECOLOGY</b> <b>DEMO</b>	—	Press when the System is on standby. Setting the ECO (Ecology) Mode allows you to reduce power consumption by turning the display off while on standby. To cancel this function, press again when the System is on standby.

### Getting Started

#### Supplied Accessories

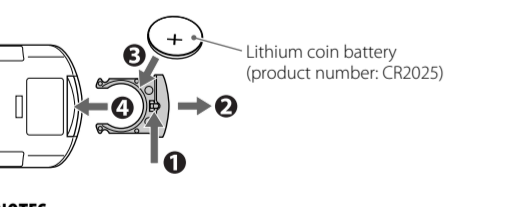
- Remote control, RM-SUXG355U (x 1)
  - Lithium coin battery CR2025 (x 1)  
— The battery has been installed in the remote control when shipped from the factory.
  - AM loop antenna (x 1)
  - FM antenna (x 1)
  - AC plug adapter (x 1) (not supplied for Australia and Hong Kong)
- If anything is missing, consult your dealer immediately.

#### Prepare the Remote Control

When you use the remote control for the first time, pull out the insulation sheet.



#### To Replace the Battery in the Remote Control



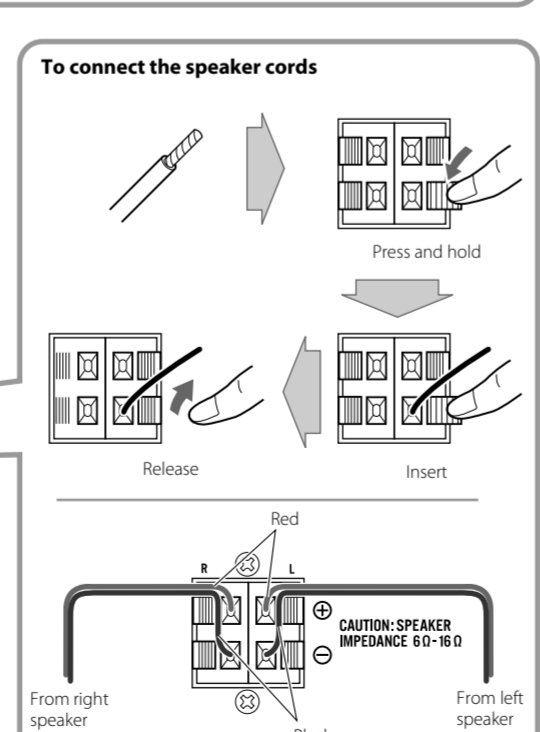
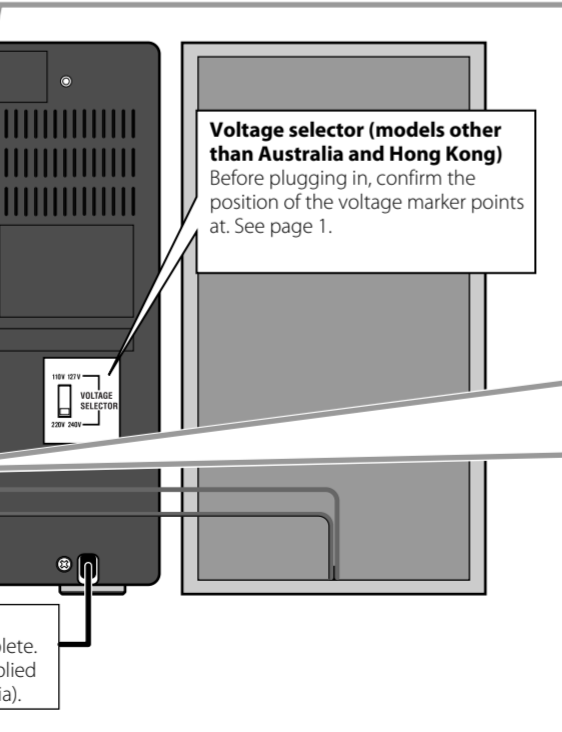
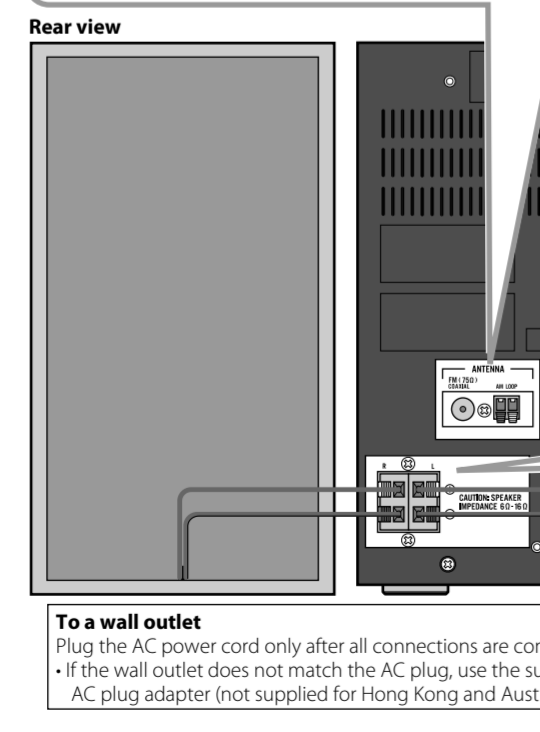
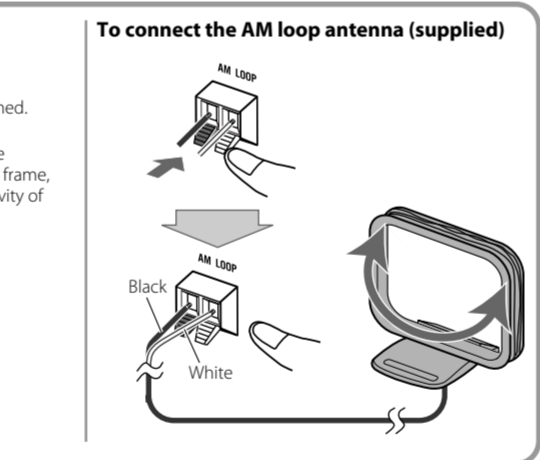
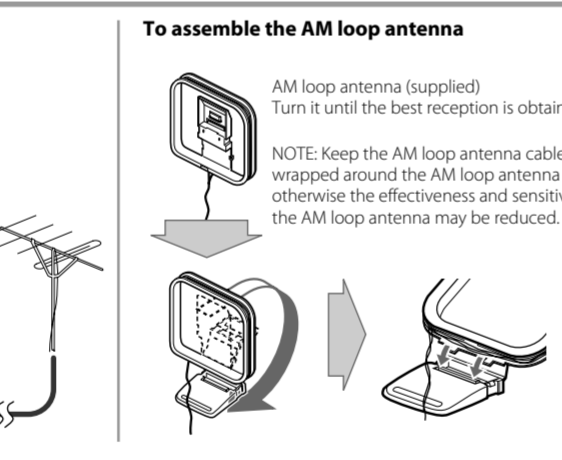
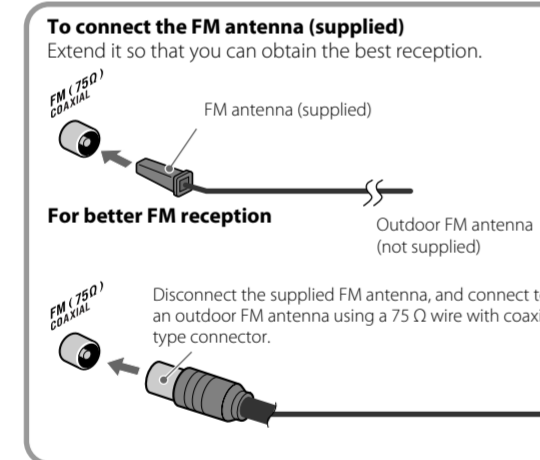
**NOTES:**

- Store the battery in a place where children cannot reach. If a child accidentally swallows the battery, consult a doctor immediately.
- To prevent the battery from overheating, cracking, or starting a fire:
  - Do not recharge, short, disassemble or heat the battery or dispose of it in a fire.
  - Do not leave the battery with other metallic materials.
  - Wrap the battery with tape and insulate when throwing away or saving it.
  - Do not poke the battery with tweezers or similar tools.
- Dispose of battery in the proper manner, according to federal, state, and local regulations.

**CAUTION:**  
Danger of explosion if battery is incorrectly replaced. Replace only with the same or equivalent type.

#### Connections

Do not connect the AC power cord until all other connections have been made.



**NOTES:**

- Make sure the antenna conductors do not touch any other terminals, connecting cords and power cord. Also, keep the antennas away from metallic parts of the System, connecting cords, and the AC power cord. This could cause poor reception.
- Make sure both the speakers are connected correctly and firmly.
- When connecting the speaker cords, match the polarity of the speaker terminals: red color to (+) and black color to (-).
- DO NOT connect more than one speaker to each terminal.
- DO NOT allow the conductor of the speaker cords to be in touch with the metallic parts of the System.

### Playing Back a Disc/USB Mass Storage Class Device

This System can play back...

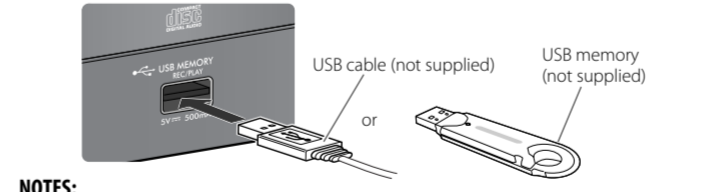
- Audio CD.
- CD-R/CD-RW recorded in audio CD format (CD-DA) or recorded MP3/WMA files in ISO 9660 format.
- USB mass storage class device containing MP3/WMA files.
- When playing back an MP3 or WMA track, MP3 or WMA indicator lights up.

#### Loading a Disc (on the System only)

- Press to open the disc tray.
- When using an 8 cm disc, place it on the inner circle of the disc tray.
- Press to close the disc tray.

#### Connecting a USB Mass Storage Class Device

You can connect a USB mass storage class device such as a USB flash memory device, MP3 player, multimedia card reader, etc. to the System.



**NOTES:**

- When connecting with a USB cable, use the USB 2.0 cable whose length is less than 1 m.
- USB mass storage class device is charged through the USB MEMORY REC/PLAY terminal except when set to ECO Mode. Some USB mass storage class device may be charged through the USB terminal only when "USB" is selected as the source.
- You cannot connect a computer to the USB MEMORY REC/PLAY terminal of the System.
- Do not disconnect the USB mass storage class device while playing back a file. It may cause malfunction of both this System and the device.
- Noise and static electricity may stop the USB mass storage class device sound. In this case, disconnect and connect the USB mass storage class device again after turning off the System.

#### Prohibiting Disc Ejection (on the System only)

You can lock the disc tray so that no one can eject the loaded disc while the System is on standby.

Press these buttons for 2 seconds while the System is on standby.  
To cancel the prohibition, repeat the same procedure.

#### Basic Disc/USB Mass Storage Class Device Operations

To	Press	Indication/Result
Play back the disc	<b>▶/II</b> <b>CD</b>	Current track number and elapsed playing time appear.
Play back the USB mass storage class device	<b>▶/II</b> <b>USB</b>	During playback, press again to pause.
Stop playback	<b>■</b>	While playback is stopped, total track number and total playing time (for MP3/WMA files, group number and track number) appear.
Select a track	<b>▶/II</b> <b>▶</b> <b>◀</b>	Select the next tracks. To go back to the beginning of the current or previous tracks.
Select a group (MP3/WMA only)	<b>UP</b> <b>DOWN</b>	Select the next groups. Select the previous groups.
Forward search/Reverse search	<b>▶/II</b> <b>▶▶</b> <b>◀◀</b>	Press and hold to fast-forward the track during playback. To stop searching, release the button. Press to fast-forward the track during playback. To stop searching, press <b>▶/II</b> . Press and hold to fast-reverse the track during playback. To stop searching, release the button. Press to fast-reverse the track during playback. To stop searching, press <b>▶/II</b> .
Change display information	<b>DISPLAY</b>	Press repeatedly.

**NOTES:**

- If no disc is inserted or no USB mass storage class device is connected, "NO DISC" or "NO USB" appears on the main display.
- If MP3/WMA files are not recorded on the disc or in the USB mass storage class device, "NO PLAY" or "NO DATA" appears on the main display.

#### RESUME Play

Press RESUME to activate RESUME Play so that the RESUME indicator lights up. When you stop the playback by one of the following operations, "RESUME" appears and this System stores the beginning of the stopped track on the disc or USB mass storage class device.

- Pressing **■** once
- Changing the source

When you start playback again, playback starts from the beginning of the stopped track.

To clear the memory, open the disc tray, disconnect the USB mass storage class device or press **■** twice.

When you clear the memory and start playback, playback starts from the first track.

To deactivate RESUME Play, press RESUME again.

#### Playing Repeatedly—Repeat Play

- Press repeatedly to specify the repeat mode as follows:
  - ▶/II**: Repeats the current (or specified) track.
  - ◀**: Repeats all tracks in the current group (MP3/WMA only).
  - ▶/II**: Repeats all tracks.
  - No indicator (Off): Normal playback
- Press **▶/II** or **▶/II** to cancel the repeat mode.

#### Programming the Playing Order—Program Play

- During stops, press so that the PRGM (program) indicator lights up.
- Select a track number.
- Press to program the selected track.
- Repeat steps 2 and 3 to program other tracks you want. If you try to program a 33rd track, "PRG FULL" will appear.
- The tracks are played back in the programmed order.

**Operations for Program Play (while program stop mode)**

- To check the programmed contents, press SET repeatedly.
- To add tracks, repeat steps 2 and 3 above.
- To erase or exit the program, press **■**.  
— The stored program is not kept.

#### Playing at Random—Random Play

- Press so that the RND (random) indicator lights up and random play starts.
- Operations for Random Play**
- To skip a track, press **▶/II**.
  - To go back to the beginning of the current track, press **◀**.
  - To exit from random play, press RANDOM so that the RND (random) indicator disappears during playback.

## Listening to FM and AM Broadcasts

### Basic Tuner Operations

To	Press	Indication/Result
Select FM or AM		Press repeatedly until FM band or AM band is selected.
Set the AM tuner intervals to 10 kHz or 9 kHz spacing		<b>On the System only:</b> When AM band is selected, press and hold . Each time you press and hold, you can select "9K -> 10K" or "10K -> 9K."
Select a frequency		Press and hold for more than 2 seconds. The System starts searching for stations and stops when a station of sufficient signal strength is tuned in. <ul style="list-style-type: none"><li>If an FM program is broadcast in stereo, the  (stereo) indicator lights up (only when the reception is good).</li><li>Press during searching to stop.</li><li>Press repeatedly to change the frequency step by step.</li></ul>
Tune in to a preset station		Press to select its preset number. <ul style="list-style-type: none"><li>For presetting stations, see below.</li></ul>
Change the FM reception mode (When an FM stereo broadcast is hard to receive)		Press to improve reception. The  (mono) indicator lights up. Stereo effect will be lost. <b>To restore the stereo effect</b> , press again.

### Presetting Stations

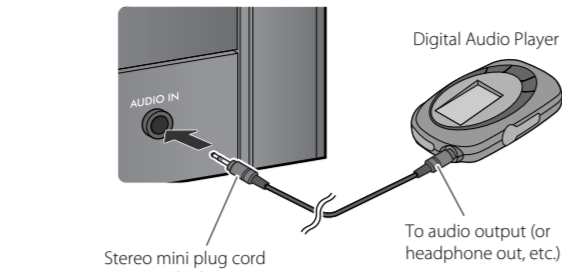
You can preset 30 FM and 15 AM stations manually.

- 1 Tune in to a station you want to preset.
- 2 Press to activate the preset number entry mode.
  - Finish the following steps while the indication on the display is flashing.
- 3 Press to select a preset number for the station you want to store.
- 4 Press to store the station.

## Listening to Other Equipment

### Listening to other equipment

#### Front view

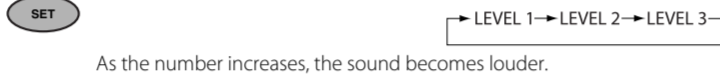


- 1 Turn the volume to minimum.
- 2 Press repeatedly to select "AUDIO IN."
- 3 Start playing the connected equipment.
- 4 Adjust the volume.

#### To Adjust the Audio Input Level

If the sound from the equipment connected to the AUDIO IN jack is too loud or too quiet, you can change the audio input level through the AUDIO IN jack (without changing the volume level).

Press and hold for more than 2 seconds while "AUDIO IN" is selected as the source. You can select one of three levels as follows:



## Learning More about This System

### Basic and Common Operations (see page 3)

- Pressing one of the source buttons also turns on the System and starts playing back if the source is ready or connected.
- To cancel the display demonstration momentarily, press and hold DEMO while the System is turned on, until "DEMO OFF" appears. Disconnecting and reconnecting the power plug will start the display demonstration again.

### Playing Back a Disc/USB Mass Storage Class Device (see page 4)

- This System cannot play "packet write" discs.
- For MP3/WMA playback...
  - In this manual, "file" and "track" are interchangeably used for MP3/WMA operations.
  - MP3/WMA discs are required a longer readout time than regular CDs. (It depends on the complexity of the group/file configuration.)
  - Some MP3/WMA files cannot be played back and will be skipped. This result from their recording processes and conditions.
  - When making MP3/WMA discs, use ISO 9660 Level 1 or Level 2 for the disc format.
  - This System can play back MP3/WMA files with the extension code <.mp3> or <.wma> (regardless of the letter case—upper/lower).
  - It is recommended that you make each MP3/WMA file at a sampling rate of 44.1 kHz and at bit rate of 128 kbps. This System cannot play back files made at bit rate of less than 64 kbps.
  - Playback order of MP3/WMA tracks may be different from the one you have intended while recording. If a folder (group) does not include MP3/WMA tracks, they are ignored.

- Some characters or symbols will not be shown correctly on the display.
- The maximum character number shown on the display is 30 for ID3 tag.
- This System can recognize a total of 999 tracks and 255 groups. Those exceeding the maximum number cannot be recognized.
- For the USB mass storage class device playback...
  - When connecting a USB mass storage class device, also refer to its manual.
  - Connect one USB mass storage class device directly to the System at a time. Do not use a USB hub.
  - This System is compatible with USB 2.0 Full Speed.
  - You cannot play back a file larger than 2 GB.
  - This System may not play back some USB mass storage class devices and does not support DRM (Digital Rights Management).
  - Coded or encrypted tracks in a special method cannot be played on the System.
  - This System cannot recognize a USB mass storage class device whose rating exceeds 5 V/500 mA.
  - When playing a file which has a large transfer rate, sounds may be dropped during playback.
  - Some USB mass storage class devices may not be recognized or may not work properly.
  - The compatible format is FAT16/FAT32.

### Listening to Other Equipment (see page 5)

- If the audio output on the other equipment is not stereo mini plug type, use a plug adapter to convert the stereo mini plug to the corresponding plug of the audio output. Refer to the manuals supplied with the other equipment.

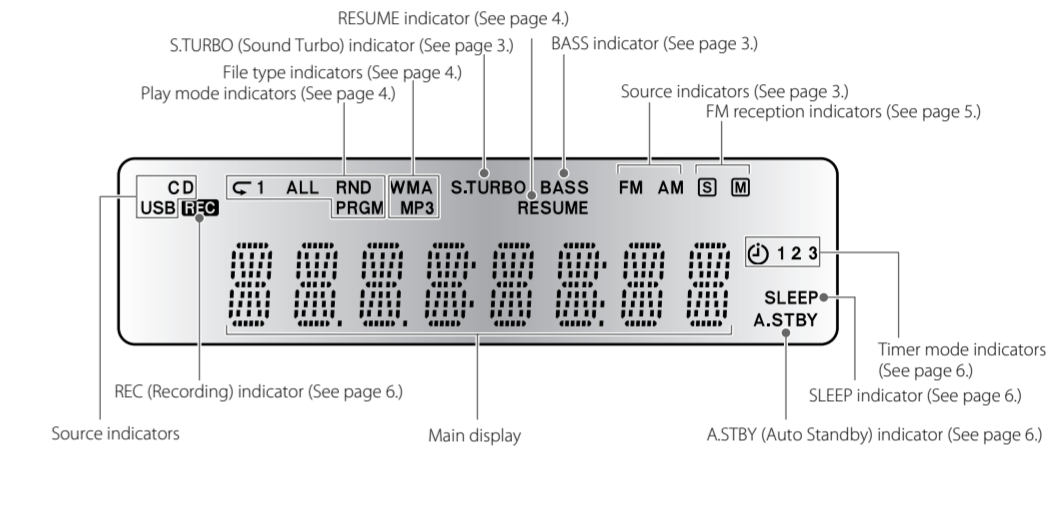
### Setting the Clock and Using Timers (see page 6)

- You can set the clock and Daily Timer while the System is turned on. While setting the clock or Daily Timer, the display is turning on.
- The clock may gain or lose 1 to 2 minutes per month. If this happens, readjust the clock.
- When you unplug the AC power cord or if a power failure occurs, the clock and the timer will be canceled. You need to set the clock first, then the timer again.

#### Timer Priority:

- If you activate the Sleep Timer after Daily Timer starts playing the selected source, Daily Timer is canceled.

### Display Information



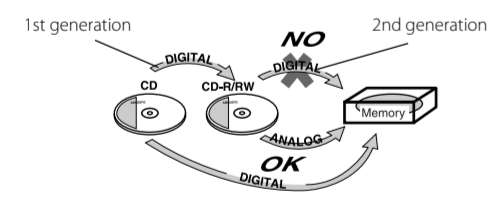
## Recording Operations

### Before You Start Recording

- It may be unlawful to record or play back copyrighted material without the consent of the copyright owner.
- The recording level is not affected by the volume.
- Hyper Bass Sound, tone adjustment, and Sound Turbo (see page 3) do not affect recordings.
- You can record up to 99 tracks per group to the USB mass storage class device.
- You cannot start recording into a USB mass storage class device while "READING" is shown on the display.
- Do not disconnect a USB mass storage class device while playing or recording. It may cause malfunction.
- During recording, the Random Play and Repeat Play will be canceled.
- You can record only from CD-DA discs.

### About SCMS (Serial Copy Management System)

The System uses the Serial Copy Management System which allows only first-generation digital copies to be made of pre-mastered software such as regular CDs. If you try to record from a duplicated disc into the USB mass storage class device, "PROTECT" appears on the display.



### Recording from a CD

You can record tracks digitally from a CD onto the USB mass storage class device.

- 1 Prepare the desired CD you want to record and stop playback.
  - 2 Press to start recording.
- When playback ends, recording also stops.

- To stop recording manually, press .

### To Record the Playing Track

- 1 Press to start recording while playing back the track to record. When the selected track ends, recording also stops.

#### NOTE:

When the capacity of the USB mass storage class device is full, the USB REC indicator does not flash and the System will not start recording.

### Display Messages for Recording Operations

#### NO REC

- Unavailable file

#### NO USB

- No USB mass storage class device is connected or the connected USB mass storage class device is not recognized with this System.

## Setting the Clock and Using Timers

### Setting the Clock

Set the built-in clock before using Daily timer or sleep timer when the System is on standby.

- "0:00" flashes on the main display until you set the clock.

- 1 Press and hold to activate the clock setting mode when the System is on standby.
- 2 Adjust the hour, then the minute.
  - If you have already adjusted the clock before, press the button repeatedly until the clock setting mode is selected.

- To go back to the previous step, press CANCEL.

### Setting the Sleep Timer

- 1 Press repeatedly to specify the time (in minutes) as follows: OFF
- The SLEEP indicator lights up.

- To check the remaining time until the System shuts off, press once.

### Turning Off the System Automatically —AUTO STANDBY (only for CD/USB)

- 1 Press and hold until the A.STBY indicator lights on the display. The A.STBY indicator starts flashing after playback stops. If no operation is done for about 3 minutes, the System turns off.

To cancel this function, press and hold again.

## Troubleshooting

If you are having a problem with your System, check this list for a possible solution before calling for service.

### General

#### Power does not turn on.

- Power plug is not inserted securely. Plug in securely.

Adjustments or settings are suddenly canceled before you finish.

- There is a time limit. Repeat the procedure again.

#### Operations are disabled.

- The built-in microprocessor may malfunction due to external electrical interference. Unplug the AC power cord and then plug it back in.

#### Unable to operate the System from the remote control.

- The path between the remote control and the remote sensor on the System is blocked.
- The batteries are exhausted.

#### No sound is heard.

- Speaker connections are incorrect or loose.
- Headphones are connected.

### Disc/USB Mass Storage Class Device Operations

#### The disc/USB mass storage class device does not play.

- The disc is placed upside down. Place the disc with the label side up.
- The disc is recorded with the "packet writing (UDF file system)." It cannot be played. Check the files you want to play back.
- The USB mass storage class device is not connected properly.

#### MP3/WMA groups and tracks are not played back in order as you expect.

- Playing order is determined when the groups and tracks were recorded. It depends on the writing application.

#### The disc/USB mass storage class device sound is discontinuous.

- The disc is scratched or dirty.
- MP3/WMA files have not been properly copied into the USB mass storage class device.

#### Sound from USB mass storage class device is interrupted.

- Static electricity may stop the sound. In this case, disconnect and connect the USB mass storage class device again after turning off the System.

#### The disc tray does not open or close.

- The AC power cord is not plugged in.
- Disc ejection is prohibited (see page 4).

7

## Maintenance

To get the best performance of the System, keep your discs and mechanism clean.

### Handling discs

- Remove the disc from its case by holding at the edge while pressing the center hole lightly.
- Do not touch the shiny surface of the disc, or bend the disc.
- Put the disc back in its case after use.
- Be careful not to scratch the surface of the disc when placing it back in its case.
- Avoid exposure to direct sunlight, temperature extremes, and moisture.

#### To clean the disc:

- Wipe the disc with a soft cloth in a straight line from center to edge.

#### Cleaning the System

- Stains should be wiped off with a soft cloth. If the System is heavily stained, wipe it with a cloth soaked in water-diluted neutral detergent and wrung well, then wipe clean with a dry cloth.
- Since the System may deteriorate in quality, become damaged or get its paint peeled off, be careful about the following:
  - DO NOT wipe it with a hard cloth.
  - DO NOT wipe it hard.
  - DO NOT wipe it with thinner or benzine.
  - DO NOT apply any volatile substance such as insecticides to it.
  - DO NOT allow any rubber or plastic to remain in contact for a long time.

## Specifications

### Amplifier section

#### OUTPUT POWER:

60 W (30 W + 30 W) at 6 Ω (10% THD)

**Speakers/Impedance:** 6 Ω – 16 Ω

**Audio input** AUDIO IN: 500 mV/47 kΩ (at "LEVEL 1")

250 mV/47 kΩ (at "LEVEL 2")

125 mV/47 kΩ (at "LEVEL 3")

USB MEMORY REC/PLAY

#### Digital input:

### Tuner section

**FM tuning range:** 87.50 MHz - 108.00 MHz

531 kHz - 1 710 kHz

(in 9 kHz spacing)

530 kHz - 1 710 kHz

(in 10 kHz spacing)

### CD player section

**Dynamic range:** 88 dB

**Signal-to-noise ratio:** 85 dB

**Wow and flutter:** Immeasurable

### USB section

**USB specification:** Compatible with USB 2.0 Full Speed

**Compatible device:** Mass storage class

**Compatible file system:** FAT16, FAT32

**Output power:** DC 5 V  $\pm$  500 mA

### General

**Power requirements:** AC 110V-127V/AC 220V-240V ~ adjustable with the voltage selector, 50 Hz/60 Hz

AC 240V ~, 50 Hz (only Australia)

AC 220V ~, 50 Hz (only Hong Kong)

**Power consumption:** 30 W (power on)

8 W (standby)

1 W or less (ECO Mode)

**Dimensions (W x H x D):** 165 mm x 251 mm x 245 mm

**Mass:** 1.9 kg

### Speakers

**Speaker units:** 10 cm cone x 1; 1.5 cm x 1

**Impedance:** 6 Ω

**Dimensions (approx.):** 140 mm x 251 mm x 141 mm (W/H/D)

**Mass (approx.):** 1.3 kg each

*Specifications and appearance are subject to change without prior notice.*

6

8

## Free Manuals Download Website

<http://myh66.com>

<http://usermanuals.us>

<http://www.somanuals.com>

<http://www.4manuals.cc>

<http://www.manual-lib.com>

<http://www.404manual.com>

<http://www.luxmanual.com>

<http://aubethermostatmanual.com>

Golf course search by state

<http://golfingnear.com>

Email search by domain

<http://emailbydomain.com>

Auto manuals search

<http://auto.somanuals.com>

TV manuals search

<http://tv.somanuals.com>