



MICRO COMPONENT SYSTEM

UX-LP5

—Consists of CA-UXLPS and SP-UXLPS

For turning off the demonstration display, see "Display Demonstration" on page 3.



Thank you for purchasing a JVC product.

INSTRUCTIONS

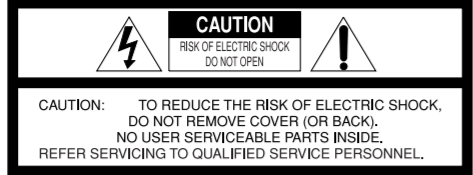
LVT1986-019A/J/C
0109KMMMDWCDT
EN

For customer use:
Enter below the Model No. and Serial No. which are located either on the rear, bottom or side of the cabinet. Retain this information for future reference.
Model No.
Serial No.

For U.S.A.
This equipment has been tested and found to comply with the limits for a Class B digital device, pursuant to part 15 of the FCC Rules.
These limits are designed to provide reasonable protection against harmful interference in a residential installation. This equipment generates, uses and can radiate radio frequency energy and, if not installed and used in accordance with the instructions, may cause harmful interference to radio communications. However, there is no guarantee that interference will not occur in a particular installation. If this equipment does cause harmful interference to radio or television reception, which can be determined by turning the equipment off and on, the user is encouraged to try to correct the interference by one or more of the following measures:
Reorient or relocate the receiving antenna.
Increase the separation between the equipment and receiver. Connect the equipment into an outlet on a circuit different from that to which the receiver is connected.
Consult the dealer or an experienced radio/TV technician for help.

Warnings, Cautions and Others

Mises en garde, précautions et indications diverses



The lightning flash with arrowhead symbol, within an equilateral triangle is intended to alert the user to the presence of uninsulated "dangerous voltage" within the products enclosure that may be of sufficient magnitude to constitute a risk of electric shock to persons. The exclamation point within an equilateral triangle is intended to alert the user to the presence of important operating and maintenance (servicing) instructions in the literature accompanying the appliance.



Le symbole de l'éclair à l'intérieur d'un triangle équilatéral est destiné à alerter l'utilisateur sur la présence d'une "tension dangereuse" non isolée dans le boîtier du produit. Cette tension est suffisante pour provoquer l'électrocution de personnes.
Le point d'exclamation à l'intérieur d'un triangle équilatéral est destiné à alerter l'utilisateur sur la présence d'opérations d'entretien importantes au sujet desquelles des renseignements se trouvent dans le manuel d'instructions.

CAUTION: Changes or modifications not approved by JVC could void the user's authority to operate the equipment.

WARNING: TO REDUCE THE RISK OF FIRE OR ELECTRIC SHOCK, DO NOT EXPOSE THIS APPLIANCE TO RAIN OR MOISTURE.

CAUTION: To reduce the risk of electrical shocks, fire, etc.:
1. Do not remove screws, covers or cabinet.
2. Do not expose this appliance to rain or moisture.

ATTENTION: Afin d'éviter tout risque d'électrocution, d'incendie, etc.:
1. Ne pas enlever les vis ni les panneaux et ne pas ouvrir le coffret de l'appareil.
2. Ne pas exposer l'appareil à la pluie ni à l'humidité.

IMPORTANT FOR LASER PRODUCTS
1. CLASS 1 LASER PRODUCT
2. **CAUTION:** Do not open the top cover or cabinet. There are no user serviceable parts inside the unit; leave all servicing to qualified service personnel.
3. **CAUTION:** Visible and/or invisible class 1M laser radiation when open. Do not view directly with optical instruments.
4. REPRODUCTION OF LABEL: CAUTION LABEL, PLACED INSIDE THE UNIT.
IMPORTANT POUR PRODUITS LASER
1. **ATTENTION:** N'ouvrez pas le couvercle supérieur ni le coffret de l'appareil. Il n'y a aucune pièce réparable par l'utilisateur à l'intérieur de l'appareil; confiez toute réparation à un personnel qualifié.
2. **ATTENTION:** Rayonnement laser visible et/ou invisible de classe 1M une fois ouvert. Ne pas regarder directement dans le faisceau avec des instruments optiques.
3. **REPRODUCTION DE L'ÉTIQUETTE: ÉTIQUETTE DE PRÉCAUTION PLACÉE À L'INTÉRIEUR DE L'APPAREIL.**



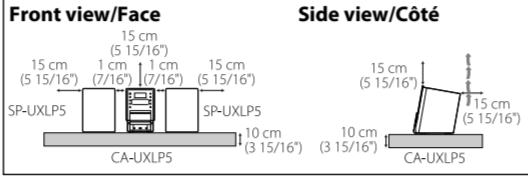
CAUTION: The O/I button in any position does not disconnect the mains line.
Disconnect the mains plug to shut the power off completely (the STANDBY lamp goes off).
The MAINS plug or an appliance coupler is used as the disconnect device, the disconnect device shall remain readily operable.
• When the system is on standby, the STANDBY lamp lights red.
• When the system is turned on, the STANDBY lamp goes off. The power can be remote controlled.

ATTENTION: La touche O/I , quelle que soit sa position, ne coupe pas la ligne principale.
Débrancher la fiche principale pour couper complètement l'alimentation du secteur (le témoin STANDBY s'éteint).
La fiche secteur ou un coupleur est utilisé comme dispositif de déconnexion de l'appareil, et l'appareil déconnecté doit être prêt à être utilisé.
• Quand l'appareil est en mode d'attente, le témoin STANDBY est allumé en rouge.
• Quand l'appareil est sous tension, le témoin STANDBY s'éteint.
L'alimentation peut être commandée à distance.

CAUTION: Excessive sound pressure from earphones or headphones can cause hearing loss.
ATTENTION: Une pression acoustique excessive des écouteurs ou du casque d'écoute peut entraîner une perte auditive.

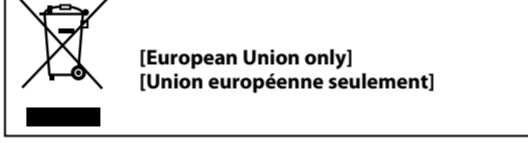
CAUTION: Battery shall not be exposed to excessive heat such as sunshine, fire, or the like.
ATTENTION: Les piles ne doivent en aucun cas être exposées à une chaleur excessive (lumière du soleil, feu, etc.).

CAUTION: Proper Ventilation
To avoid risk of electric shock and fire, and to prevent damage, locate the apparatus as follows:
1. Front: No obstructions and open spacing.
2. Sides/Top/Back: No obstructions should be placed in the areas shown by the dimensions below.
3. Bottom: Place on the level surface. Maintain an adequate air path for ventilation by placing on a stand with a height of 10 cm or more.
ATTENTION: Aération correcte
Pour prévenir tout risque de décharge électrique ou d'incendie et éviter toute détérioration, installez l'appareil de la manière suivante:
1. Avant: Bien dégagé de tout objet.
2. Côtés/dessus/dessous: Assurez-vous que rien ne bloque les espaces indiqués sur le schéma ci-dessous.
3. Dessous: Posez l'appareil sur une surface plane et horizontale. Veillez à ce que sa ventilation correcte puisse se faire en le plaçant sur un support d'au moins dix centimètres de hauteur.

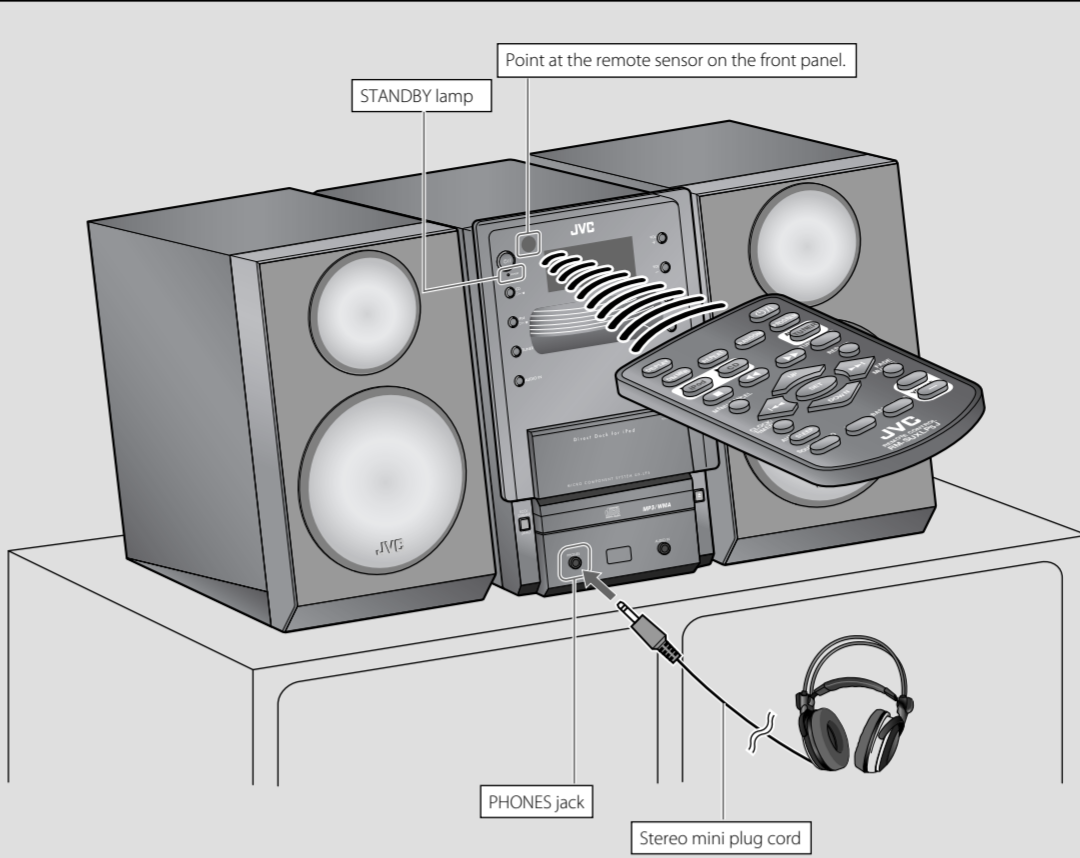


CAUTION: Do not block the ventilation openings or holes. (If the ventilation openings or holes are blocked by a newspaper or cloth, etc., the heat may not be able to get out.)
Do not place any naked flame sources, such as lighted candles, on the apparatus.
When discarding batteries, environmental problems must be considered and local rules or laws governing the disposal of these batteries must be followed strictly.
Do not expose this apparatus to rain, moisture, dripping or splashing and that no objects filled with liquids, such as vases, shall be placed on the apparatus.

ATTENTION:
• Ne bloquez pas les orifices ou les trous de ventilation. (Si les orifices ou les trous de ventilation sont bloqués par un journal un tissu, etc., la chaleur peut ne pas être évacuée correctement de l'appareil.)
• Ne placez aucune source de flamme nue, telle qu'une bougie, sur l'appareil.
• Lors de la mise au rebut des piles, veuillez prendre en considération les problèmes de l'environnement et suivre strictement les règles et les lois locales sur la mise au rebut des piles.
• N'exposez pas cet appareil à la pluie, à l'humidité, à un égouttement ou à des éclaboussures et ne placez pas des objets remplis de liquide, tels qu'un vase, sur l'appareil.



Basic and Common Operations



Display Demonstration
When you plug in the System, the display demonstration automatically starts. To cancel the display demonstration, press and hold DEMO until "DEMO CLR" is displayed while the System is on standby.
• When the ECO Mode is activated, the display demonstration does not work (and you cannot deactivate it).
• When the display demonstration is activated, it also starts if no operation is done for about 2 minutes while the System is turned on.

Using Headphones
Be sure to turn down the volume before connecting or putting on the headphones.
• Connecting the headphones will deactivate the speakers.
• Sound adjustments also affect the sound through the headphones.

NOTE: DO NOT turn off (standby) the System with the volume set to an extremely high level; otherwise, the sudden blast of sound can damage your hearing, speakers and headphones when you turn on the System or start playback.

The operations on pages 4 to 6 are explained using the remote control, unless mentioned otherwise. However, if the System has the same or similar button names, they can also be used for the operations.

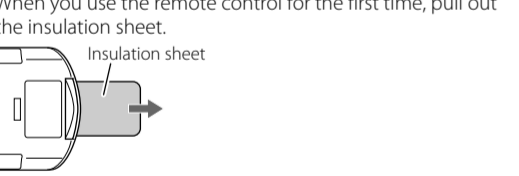
To	Press		Indication/Result
	System	Remote	
Turn on or off (standby) the power	O/I	O/I	The STANDBY lamp on the System turns off/on.
Select a source	CD , iPod , TUNER , AUDIO IN	CD , iPod , TUNER , AUDIO IN	See "Playing Back a Disc on page 4 and "Listening to an iPod/Viewing Images on the iPod" on page 5. For the remote control: TUNER FM \rightarrow TUNER AM AUDIO IN \leftarrow • For "FM/AM," see "Listening to FM and AM Broadcasts" on page 5. • For "AUDIO IN," see "Listening to Other Equipment" on page 5.
Adjust the volume	VOL +, VOL -	VOLUME +, VOLUME -	Adjustable range: Level 0 ("VOL MIN") to level 40 ("VOL MAX").
Drop the volume in a moment	—	FADE MULTIPLE	To restore the volume, press again, or adjust the volume level.
Emphasize the sound (Sound Turbo)	—	SOUND TURBO	The S.TURBO indicator lights up. To cancel this function, press again.
Reinforce the bass sound (Hyper Bass Sound)	—	HBS	The BASS indicator lights up. To cancel this function, press again.
Adjust the tone (Bass/Treble)	—	BASSTREBLE, +, -	Press once for adjusting the bass level; twice for treble level, then, press VOLUME +/-. Adjustable range: -3 to +3.
Dim the display	ECO/DIMMER, DEMO	DIMMER	You can dim the display window and illumination lamp. While the System is turned on... \rightarrow DIM 1 \rightarrow DIM 2 \rightarrow DIM OFF (Canceled)
Set the clock and timer	—	CLOCK/TIMER	For setting the clock, see "Setting the Clock and Using Timers" on page 6.
Change the display information	—	DISPLAY	The display information changes as follows: FM: Clock \rightarrow Frequency AM: Clock \rightarrow Frequency CD: Current track elapsed time \rightarrow CD total remaining time \rightarrow Current track remaining time MP3/WMA: Current track elapsed time \rightarrow ID3 tag \rightarrow Current group/track
Set the ECO (Ecology) Mode	ECO/DIMMER, DEMO	—	Press when the System is on standby. Setting the ECO (Ecology) Mode allows you to reduce power consumption by turning the display (clock display) off while on standby. To cancel this function, press again when the System is on standby.

Getting Started

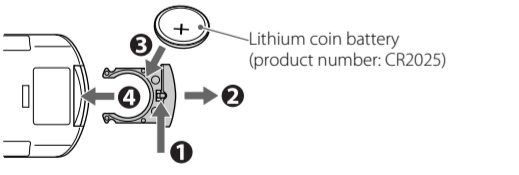
Supplied Accessories

- Remote control, RM-UXLPSJ (x 1)
 - Lithium coin battery CR2025 (x 1)
— The battery has been installed in the remote control when shipped from the factory.
 - AM loop antenna (x 1)
 - FM antenna (x 1)
 - Protection sheet (x 1)
- If anything is missing, consult your dealer immediately.

Prepare the Remote Control



To Replace the Battery in the Remote Control



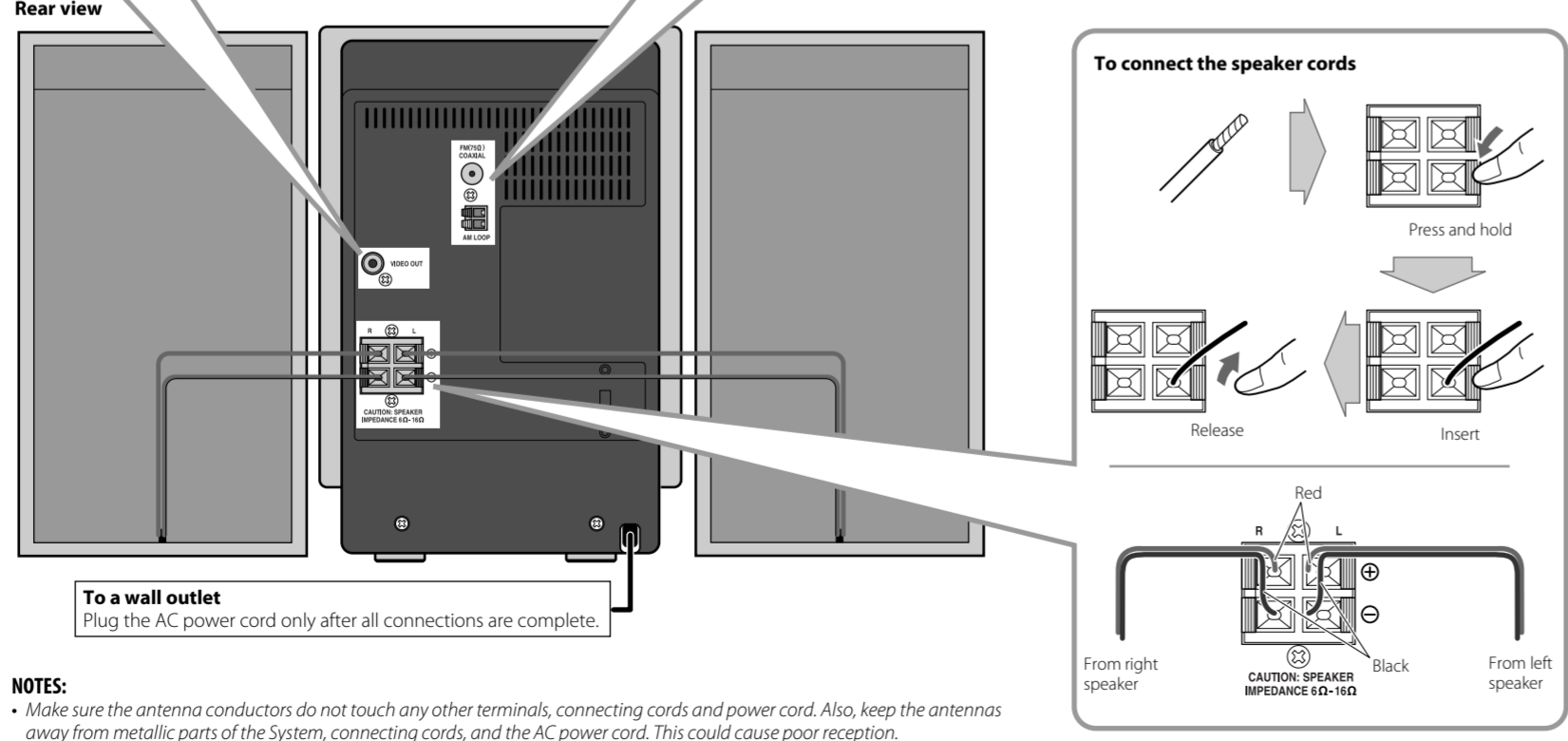
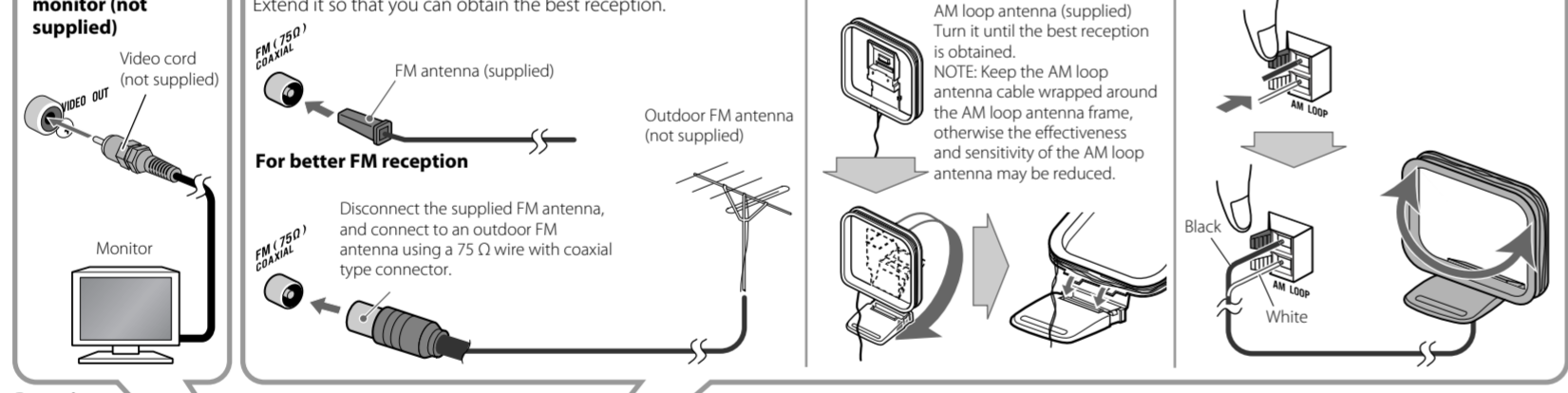
- NOTES:**
- Store the battery in a place where children cannot reach. If a child accidentally swallows the battery, consult a doctor immediately.
 - To prevent the battery from overheating, cracking, or starting a fire:
 - Do not recharge, short, disassemble or heat the battery or dispose of it in a fire.
 - Do not leave the battery with other metallic materials.
 - Wrap the battery with tape and insulate when throwing away or saving it.
 - Do not poke the battery with tweezers or similar tools.
 - Dispose of battery in the proper manner, according to federal, state, and local regulations.

For USA-California Only
This product contains a CR Coin Cell Lithium Battery which contains Perchlorate Material – special handling may apply. See www.dtsc.ca.gov/hazardouswaste/perchlorate

CAUTION:
Danger of explosion if battery is incorrectly replaced. Replace only with the same or equivalent type.

Connections

Do not connect the AC power cord until all other connections have been made.

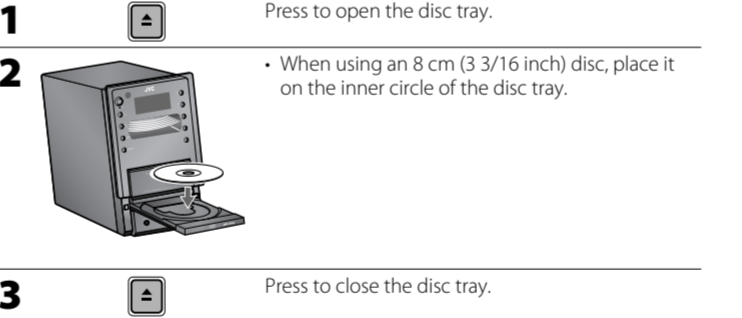


- NOTES:**
- Make sure the antenna conductors do not touch any other terminals, connecting cords and power cord. Also, keep the antennas away from metallic parts of the System, connecting cords, and the AC power cord. This could cause poor reception.
 - Make sure both the speakers are connected correctly and firmly.
 - When connecting the speaker cords, match the polarity of the speaker terminals: red color to (+) and black color to (-).
 - DO NOT connect more than one speaker to each terminal.
 - DO NOT allow the conductor of the speaker cords to be in touch with the metallic parts of the System.

Playing Back a Disc

This System can play back...
– CD.
– CD-R/CD-RW recorded in audio CD format (CD-DA) or recorded MP3/WMA files in ISO 9660 format.
• When playing back an MP3 or WMA track, MP3 or WMA indicator lights up.

Loading a Disc (on the System only)



Prohibiting Disc Ejection (on the System only)

You can lock the disc tray so that no one can eject the loaded disc while the System is on standby.
• Press these buttons for 2 seconds while the System is on standby.
To cancel the prohibition, repeat the same procedure.

Basic Disc Operations

To	Press	Indication/Result
Play back the disc	CD	• Current track number and elapsed playing time appear. • During playback, press again to pause.
Stop playback	STOP	• While playback is stopped, total track number and total playing time (for MP3/WMA files, group number and track number) appear.
Select a track	NEXT , PREV	Select the next tracks.
Select a group (MP3/WMA only)	UP, DOWN	To go back to the beginning of the current or previous tracks. Select the next groups. Select the previous groups.
Forward search/Reverse search	FF , REW	Press and hold to fast-forward the track during playback. To stop searching, release the button. Press to fast-forward the track during playback. To stop searching, press CD . Press and hold to fast-reverse the track during playback. To stop searching, release the button. Press to fast-reverse the track during playback. To stop searching, press CD .
Change display information	DISPLAY	Press repeatedly.

NOTES:

- If no disc is inserted, "NO DISC" appears on the main display.
- If MP3/WMA files are not recorded on the disc, "NO PLAY" appears on the main display.

RESUME Play

Press RESUME to activate RESUME Play so that the RESUME indicator lights up. When you stop the playback by one of the following operations, this System stores the beginning of the stopped track on the disc.
– Pressing STOP once
– Changing the source
When you start playback again, playback starts from the beginning of the stopped track.
To clear the memory, open the disc tray.
• When you clear the memory and start playback, playback starts from the first track.
To deactivate RESUME Play, press RESUME again.
NOTE:
This function does not work in Program Play.

Playing Repeatedly—Repeat Play

- 1 REPEAT Press repeatedly to specify the repeat mode as follows:
 REPEAT : Repeats the current (or specified) track.
 ALL : Repeats all tracks in the current group (MP3/WMA only).
 $\text{NO INDICATOR (OFF)}$: Repeats all tracks. Normal playback

Programming the Playing Order—Program Play

- 1 PROGRAM During stops, press so that the PRGM (program) indicator lights up.
2 NEXT Select a track number.
OR PREV
3 SET Press to program the selected track.
4 Repeat steps 2 and 3 to program other tracks you want.
• If you try to program a 32nd track, "PRG FULL" will appear.
5 CD The tracks are played back in the programmed order.

Operations for Program Play (while program stop mode)

- To check the programmed contents, press SET repeatedly.
- To add tracks, after "---" appears on the display by pressing SET repeatedly, repeat steps 2 and 3 above.
- To erase or exit the program, press STOP .
– The stored program is not kept.

Playing at Random—Random Play

- 1 RANDOM Press so that the RND (random) indicator lights up and playback starts in random order.

Operations for Random Play

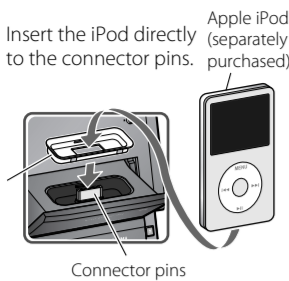
- To skip a track, press NEXT .
- To go back to the beginning of the current track, press PREV .
- To exit from random play, press RANDOM so that the RND (random) indicator disappears during playback.

Listening to an iPod/Viewing Images on the iPod

Connecting an iPod

Push PUSH-OPEN to open the direct dock for iPod.

Front view



Dock adapter (supplied with the iPod or sold separately)

To detach the dock adapter from the dock:

Pull up the dock adapter with your fingernail or sharp pointed tool using the slot.

- Be careful not to injure your fingertips or damage the terminal of the dock.



When the iPod touches the unit, attach the protection sheet (supplied) to the panel of the unit.

- Use the Dock adapter (supplied with your iPod or to be purchased) when connecting an iPod.
- When you close the direct dock, remove the dock adapter.
- Be sure to reduce the volume on the System to the minimum level before connecting an iPod. Adjust the volume after starting playback.
- DO NOT connect or disconnect the iPod when the System is turned on.
- You cannot send any data to your iPod from the System.
- You do not carry the System with the iPod connected. You might drop it or it might cause damages to the iPod dock.
- Do not touch or hit the iPod terminal pins or connector pins in the iPod dock directly. It might cause damages to the connector part.
- Before viewing a video/picture from your iPod on your monitor, make the appropriate video setting on the iPod. For details of the setting, see the instruction manual for iPod.

Basic iPod Operations

To	Press	Indication/Result
Play back an iPod		The System detects the iPod and starts playback. • To turn off the iPod, press and hold.
Select a track		Press to select the next tracks during playback.
		Press to go back to the beginning of the current or previous tracks during playback.
Forward search/Reverse search		Press to fast-forward the track during playback. To stop searching, press ► .
		Press to fast-reverse the track during playback. To stop searching, press ► .
Display the menu/Go back to the previous menu		—
Select an item on the menu		• The UP/DOWN buttons work in the same way as operating the click wheel of iPod counterclockwise/clockwise. (Refer to the instruction manual for the iPod for details.)
Play back at random		• Refer to the instruction manual for the iPod for details.
Play back repeatedly		• Refer to the instruction manual for the iPod for details.
Change display information		Press repeatedly.

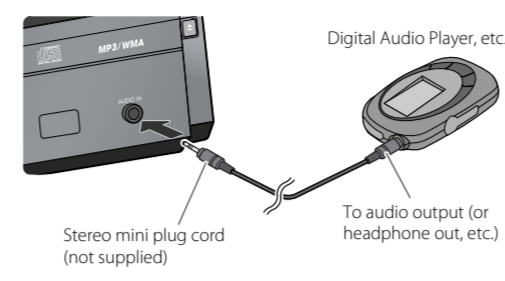
Listening to FM and AM Broadcasts

Basic Tuner Operations

To	Press	Indication/Result
Select FM or AM		Press repeatedly until FM band or AM band is selected.
Select a frequency		Press and hold for more than 2 seconds. The System starts searching for stations and stops when a station of sufficient signal strength is tuned in. • If an FM program is broadcast in stereo, the [S] (stereo) indicator lights up (only when the reception is good). • Press during searching to stop. • Press repeatedly to change the frequency step by step.
Tune in to a preset station		Press to select its preset number. For presetting stations, see below.
Change the FM reception mode (When an FM stereo broadcast is hard to receive)		Press to improve reception. The [M] (mono) indicator lights up. Stereo effect will be lost. To restore the stereo effect, press again.

Listening to Other Equipment

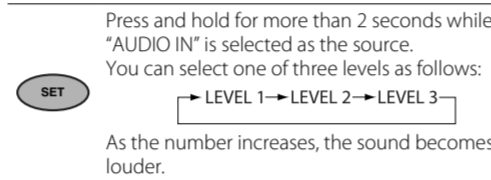
Front view



- Turn the volume to minimum.
- Press repeatedly to select "AUDIO IN."
- Start playing the connected equipment.
- Adjust the volume.

To Adjust the Audio Input Level

If the sound from the other equipment connected to the AUDIO IN jack is too loud or too quiet, you can change the audio input level through the AUDIO IN jack (without changing the volume level).



Maintenance

To get the best performance of the System, keep your discs and mechanism clean.

Handling discs

- Remove the disc from its case by holding it at the edge while pressing the center hole lightly.
- Do not touch the shiny surface of the disc, or bend the disc.
- Put the disc back in its case after use.
- Be careful not to scratch the surface of the disc when placing it back in its case.
- Avoid exposure to direct sunlight, temperature extremes, and moisture.

To clean the disc:

- Wipe the disc with a soft cloth in a straight line from center to edge.

Cleaning the System

- Stains should be wiped off with a soft cloth. If the System is heavily stained, wipe it with a cloth soaked in water-diluted neutral detergent and wrung well, then wipe clean with a dry cloth.
- Since the System may deteriorate in quality, become damaged or get its painted peel-off, be careful about the following:
 - DO NOT wipe it hard.
 - DO NOT wipe it with thinner or benzine.
 - DO NOT apply any volatile substance such as insecticides to it.
 - DO NOT allow any rubber or plastic to remain in contact for a long time.

Microsoft and Windows Media are either registered trademarks or trademarks of Microsoft Corporation in the United States and/or other countries.

iPod is a trademark of Apple Inc., registered in the U.S. and other countries.

Learning More about This System

Basic and Common Operations (see page 3)

- Pressing one of the source buttons also turns on the System and starts playing back if the source is ready or connected.
- To cancel the display demonstration momentarily, press and hold DEMO while the System is turned on, until "DEMO OFF" appears. Disconnecting and reconnecting the power plug will start the display demonstration again.

Playing Back a Disc (see page 4)

- This System cannot play "packet write" discs.
- For MP3/WMA playback...
 - In this manual, "file" and "track" are interchangeably used for MP3/WMA operations.
 - This System can show the Tag data (Version 1).
 - MP3/WMA discs are required a longer readout time than regular CDs. (It depends on the complexity of the group/file configuration.)
 - Some MP3/WMA files cannot be played back and will be skipped. This result from their recording processes and conditions.
 - When making MP3/WMA discs, use ISO 9660 Level 1 or Level 2 for the disc format.
 - This System can play back MP3/WMA files with the extension code <.mp3> or <.wma> (regardless of the letter case—upper/lower).
 - It is recommended that you make each MP3/WMA file at a sampling rate of 44.1 kHz and at bit rate of 128 kbps. This System cannot play back files made at bit rate of less than 64 kbps.
 - Playback order of MP3/WMA tracks may be different from the one you have intended while recording. If a folder does not include MP3/WMA tracks, they are ignored.
- This System can recognize up to 255 groups in a disc. The total number of groups and tracks (in a disc) that can be recognized by the System is 512 (for MP3/WMA).

Playing Back an iPod/Viewing Images on the iPod (see page 5)

- Compatible iPod:

iPod model	Audio	Video
iPod nano 1GB/2GB/4GB	✓	—
iPod nano (2nd Generation) 2GB/4GB/8GB	✓	—
iPod nano (3rd Generation) 4GB/8GB	✓	✓
iPod nano (4th Generation) 8GB/16GB	✓	✓
iPod mini 4GB/6GB	✓	—
iPod mini (2nd Generation) 4GB/6GB	✓	—
iPod (4th Generation) 20GB/40GB	✓	—
iPod classic 80GB/160GB	✓	✓
iPod photo (4th Generation) 20GB/30GB/40GB/60GB	✓	✓
iPod video (5th Generation) 30GB/60GB/80GB	✓	✓
iPod touch 8GB/16GB	✓	✓
iPod touch (2nd Generation) 8GB/16GB	✓	✓

- Sound distortion may occur when playing back audio sources with high recording levels. When distortion occurs, it is recommended to turn off the equalizer of the iPod. For information on operating the iPod, see the iPod instruction manual.

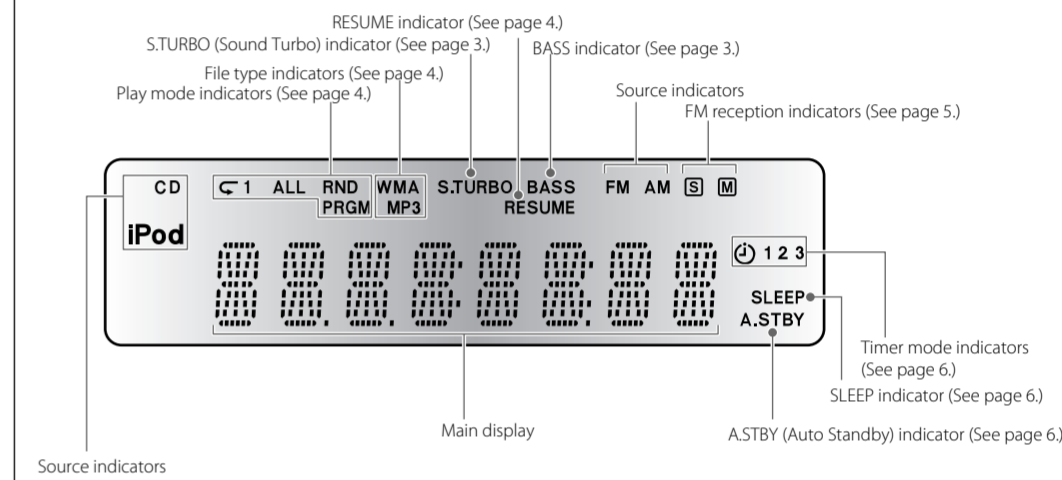
Setting the Clock and Using Timers (see page 6)

- You can set the clock and Daily Timer while the System is turned on. While setting the clock or Daily Timer, the display is turning on.
- The clock may gain or lose 1 to 2 minutes per month. If this happens, readjust the clock.
- When you unplug the AC power cord or if a power failure occurs, the clock and the timer will be canceled. You need to set the clock first, then the timer again.

Timer Priority:

- If you activate the Sleep Timer after Daily Timer starts playing the selected source, Daily Timer is canceled.

Display Information



Setting the Clock and Using Timers

Setting the Clock

Without setting the built-in clock, you cannot use Daily Timer and Sleep Timer.

- "AM12:00" flashes on the main display until you set the clock.

- Press and hold to activate the clock setting mode when the System is on standby.
- Adjust the hour, then the minute.

- To go back to the previous step, press MENU/CANCEL.

Setting the Sleep Timer

Press repeatedly to specify the time (in minutes) as follows:

The SLEEP indicator lights up.

- To check the remaining time until the System shuts off, press once.

Turning Off the System Automatically —AUTO STANDBY (only for CD)

Press and hold until the A.STBY indicator lights on the display.

- The A.STBY indicator starts flashing after playback stops.
- If no operation is done for about 3 minutes, the System turns off.

To cancel this function, press and hold again.

Setting the Daily Timer

Using Daily Timer, you can wake up with your favorite music.

- You can store three Daily Timer settings.
- Tune into a station, place a CD, or connect an iPod to the System beforehand.

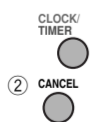
- Press CLOCK/TIMER repeatedly to display the desired Daily Timer number (1/2/3 lights up), then press SET during DAILY 1, DAILY 2 or DAILY 3 is displayed.
- Adjust the hour then the minute for on-time.

 - Adjust the hour then the minute for off-time.
 - Select the playback source—"CD," "TUNER FM," "TUNER AM," or "IPOD."
 - Select the volume.
• You can select the volume level ~"VOLUME 0" (VOL MIN) to "VOLUME 40" (VOL MAX). If you select "VOLUME -," the volume is set to the last level when the System is turned off.
- Turn off the System (on standby).
• When the on-time comes, the System sets the volume gradually to the preset level.

- To exit from the timer setting, press MENU/CANCEL as required.
- To correct a misentry during the process, press MENU/CANCEL. You can return to the previous step.

To Turn Off the Daily Timer

- Press repeatedly to select "DAILY 1," "DAILY 2," or "DAILY 3."



Troubleshooting

If you are having a problem with your System, check this list for a possible solution before calling for service.

General

Power does not come on.

- Power plug is not inserted securely. Plug in securely.

Adjustments or settings are suddenly canceled before you finish.

- There is a time limit. Repeat the procedure again.

Operations are disabled.

- The built-in microprocessor may malfunction due to external electrical interference. Unplug the AC power cord and then plug it back in.

Unable to operate the System from the remote control.

- The path between the remote control and the remote sensor on the System is blocked.
- The batteries are exhausted.

No sound is heard.

- Speaker connections are incorrect or loose.
- Headphones are connected.

The System does not work properly.

- Many functions of this System are implemented by microcomputers. If the System does not work correctly, disconnect the AC power cord from the wall outlet, wait for a while, and connect the cord again.

Disc Operations

The disc does not play.

- The disc is placed upside down. Place the disc with the label side up.
- The disc is recorded with the "packet writing (UDF file system)." It cannot be played. Check the files you want to play back.

MP3/WMA groups and tracks are not played back as you expect.

- Playing order is determined when the groups and tracks were recorded. It depends on the writing application.

The disc sound is discontinuous.

- The disc is scratched or dirty.

The disc tray does not open or close.

- The AC power cord is not plugged in.
- Disc ejection is prohibited (see page 4).

iPod Operations

The iPod does not play, but "CONNECT" appears on the display.

- The iPod battery is low or exhausted. Charge the iPod battery.

Radio Operations

Hard to listen to broadcasts because of noise.

- Antenna connections are incorrect or loose.
- The AM loop antenna is too close to the System.
- The FM antenna is not properly extended and positioned.
- Electrostatic discharge from your body may cause noise. If this happens, turn off and on the System again.

Timer Operations

Daily Timer does not work.

- The System has been turned on when the on-time comes. Timer starts working only when the System is turned off.

Specifications

Amplifier section

OUTPUT POWER:

35 W per channel, min. RMS, driven into 4 Ω at 1 kHz with no more than 10% total harmonic distortion
Speakers/Impedance: 6 Ω - 16 Ω
Audio input AUDIO IN: 500 mV/47 kΩ (at "LEVEL 1")
 250 mV/47 kΩ (at "LEVEL 2")
 125 mV/47 kΩ (at "LEVEL 3")

Tuner section

FM tuning range: 87.5 MHz - 108.0 MHz
AM tuning range: 530 kHz - 1 710 kHz

CD player section

Dynamic range: 88 dB
Signal-to-noise ratio: 85 dB
Wow and flutter: Immeasurable

iPod section

iPod output power: DC 5 V ≐ 500 mA
VIDEO OUT: Composite

General

Power requirements: AC 120 V ~, 60 Hz
Power consumption: 35 W (power on)
 8 W (standby mode)
 1 W or less (Ecology Mode)

Dimensions (approx.):

165 mm x 259 mm x 258 mm
 (6-1/2 inches x 10-1/4 inches x 10-3/16 inches) (W x H x D)
 1.9 kg (4.2 lbs)

Mass (approx.):

Speakers

Speaker units: 10 cm (3-15/16 inches) x 1; 1.5 cm (5/8 inch) x 1
 6 Ω
 140 mm x 250 mm x 188 mm (5-9/16 inches x 9-7/8 inches x 7-7/16 inches) (W x H x D)
Mass (approx.): 1.4 kg (3.1 lbs) each

Specifications and appearance are subject to change without prior notice.

TO OUR VALUED CUSTOMER

THANK YOU FOR PURCHASING THIS JVC PRODUCT. WE WANT TO HELP YOU ACHIEVE A PERFECT EXPERIENCE.

**NEED HELP ON HOW TO HOOK UP?
 NEED ASSISTANCE ON HOW TO OPERATE?
 NEED TO LOCATE A JVC SERVICE CENTER?
 LIKE TO PURCHASE ACCESSORIES?**

JVC IS HERE TO HELP!
TOLL FREE: 1(800)252-5722
<http://www.jvc.com>

Remember to retain your Bill of Sale for Warranty Service.

Do not attempt to service the product yourself

Caution
 To prevent electrical shock, do not open the cabinet. There are no user serviceable parts inside. Please refer to qualified service personnel for repairs.

BT-51018-5
 (0306)

JVC LIMITED WARRANTY 1-1 [USA ONLY]
 [ONLY FOR PRODUCT PURCHASED IN U.S.A.]
 JVC Americas Corp. (JVC) warrants this product and all parts thereof, except as set forth below ONLY TO THE ORIGINAL RETAIL PURCHASER to be FREE FROM DEFECTIVE MATERIALS AND WORKMANSHIP from the date of original purchase for the period shown below. ("The Warranty Period")

PARTS	LABOR
1 YR	1 YR

THIS LIMITED WARRANTY IS VALID ONLY IN THE FIFTY (50) UNITED STATES, THE DISTRICT OF COLUMBIA AND IN THE COMMONWEALTH OF PUERTO RICO.

WHAT WE WILL DO:
 If this product is found to be defective within the warranty period, JVC will repair or replace defective parts with new or rebuilt equivalents at no charge to the original owner. Such repair and replacement services shall be rendered by JVC during normal business hours at JVC authorized service centers. Parts used for replacement are warranted only for the remainder of the Warranty Period. All products may be brought to a JVC authorized service center on a carry-in basis. Color televisions with a screen size of 27" or greater qualify for in-home service. In such cases, a technician will come to your home and either repair the TV there or remove and return it if it cannot be repaired in your home.

WHAT YOU MUST DO FOR WARRANTY SERVICE:
Please do not return your product to the retailer.
 Instead, return your product to the JVC authorized service center nearest you. If shipping the product to the service center, please be sure to package it carefully, preferably in the original packaging, and include a brief description of the problem(s). Please call 1-800-252-5722 to locate the nearest JVC authorized service center. Service locations can also be obtained from our website <http://www.jvc.com>. If your product qualifies for in-home service, the service representative will require clear access to the product.

If you have any questions concerning your JVC Product, please contact our Customer Care Center at 800-252-5722.

WHAT IS NOT COVERED:
 This limited warranty provided by JVC does not cover:
 1. Products which have been subject to abuse, accident, alteration, modification, tampering, negligence, misuse, faulty installation, lack of reasonable care, or if repaired or serviced by anyone other than a service facility authorized by JVC to render such service, or if affixed to any attachment not provided with the products, or if the model or serial number has been altered, tampered with, defaced or removed;
 2. Initial installation, installation and removal from cabinets or mounting systems.
 3. Operational adjustments covered in the Owner's Manual, normal maintenance, video and audio head cleaning;
 4. Damage that occurs in shipment, due to act of God, and cosmetic damage;
 5. Signal reception problems and failures due to line power surge;
 6. User Removal Memory Devices/Video Pick-up Tubes/CCD Image Sensors are covered for 90 days from the date of purchase;
 7. Accessories;
 8. Batteries (except that Rechargeable Batteries are covered for 90 days from the date of purchase);
 9. Products used for commercial purposes, including, but not limited to rental.
 10. Loss of data resultant from malfunction of hard drive or other data storage device;

There are no express warranties except as listed above.

THE DURATION OF ANY IMPLIED WARRANTIES, INCLUDING THE IMPLIED WARRANTY OF MERCHANTABILITY, IS LIMITED TO THE DURATION OF THE EXPRESS WARRANTY HEREIN.

JVC SHALL NOT BE LIABLE FOR ANY LOSS OF USE OF THE PRODUCT, INCONVENIENCE, OR ANY OTHER DAMAGES, WHETHER DIRECT, INCIDENTAL OR CONSEQUENTIAL (INCLUDING, WITHOUT LIMITATION, DAMAGE TO TAPES, RECORDS OR DISCS) RESULTING FROM THE USE OF THIS PRODUCT, OR ARISING OUT OF ANY BREACH OF THIS WARRANTY. ALL EXPRESS AND IMPLIED WARRANTIES, INCLUDING THE WARRANTIES OF MERCHANTABILITY AND FITNESS FOR PARTICULAR PURPOSE, ARE LIMITED TO THE WARRANTY PERIOD SET FORTH ABOVE.

Some states do not allow the exclusion of incidental or consequential damages or limitations on how long an implied warranty lasts, so these limitations or exclusions may not apply to you. This warranty gives you specific legal rights and you may also have other rights which vary from state to state.

JVC AMERICAS CORP.
 1700 Valley Road, Wayne, New Jersey 07470
<http://www.jvc.com>

 REFURBISHED PRODUCTS CARRY A SEPARATE WARRANTY. THIS WARRANTY DOES NOT APPLY. FOR DETAIL OF REFURBISHED PRODUCT WARRANTY, PLEASE REFER TO THE REFURBISHED PRODUCT WARRANTY INFORMATION PACKAGED WITH EACH REFURBISHED PRODUCT.

For customer use:

Enter below the Model No. and Serial No. which is located either on the rear, bottom or side of the cabinet. Retain this information for future reference.

Model No. :	Serial No. :
Purchase date :	Name of dealer :

Free Manuals Download Website

<http://myh66.com>

<http://usermanuals.us>

<http://www.somanuals.com>

<http://www.4manuals.cc>

<http://www.manual-lib.com>

<http://www.404manual.com>

<http://www.luxmanual.com>

<http://aubethermostatmanual.com>

Golf course search by state

<http://golfingnear.com>

Email search by domain

<http://emailbydomain.com>

Auto manuals search

<http://auto.somanuals.com>

TV manuals search

<http://tv.somanuals.com>