



Ci200.2QS/QR

Information Sheet



These are the Ci200.2QS and Ci200.2QR, generous in size and outstanding in performance. Audiophile quality sound is derived from KEF's Uni-Q® driver array technology, providing your room with an expansive soundscape, excellent bass extension and so creating the perfect sound stage.

Deciding whether to place the Ci200.2QS and Ci200.2QR in the walls or ceiling has

never been more simple. Thanks to KEF's simple and ingenious screw down clamping system you'll find them easy and quick to install.

Designed with moisture-resistant fixings allowing placement in the harshest environments such as bathrooms or even outside (under eaves).

The Ci200.2QS and Ci200.2QR offer excellent quality with no sacrifice.

Features and Benefits:

The 2-way Ci200.2QS and Ci200.2QR combine 100W power handling and 89dB sensitivity, for a maximum output of 108dB. A 200mm (8") polypropylene cone bass/mid unit with a coincident mounted 25mm (1") soft dome, ferrofluid cooled high-frequency unit provide superb off-axis dispersion characteristics.

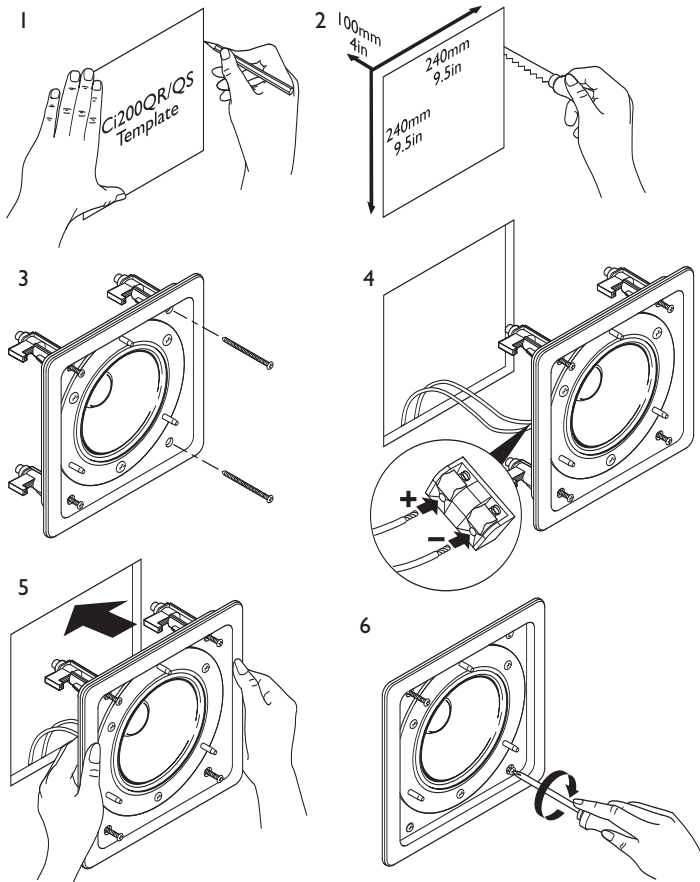
The bezel and grille can be painted or covered by fabric to match the interior décor.

Ci series
custom installation speakers

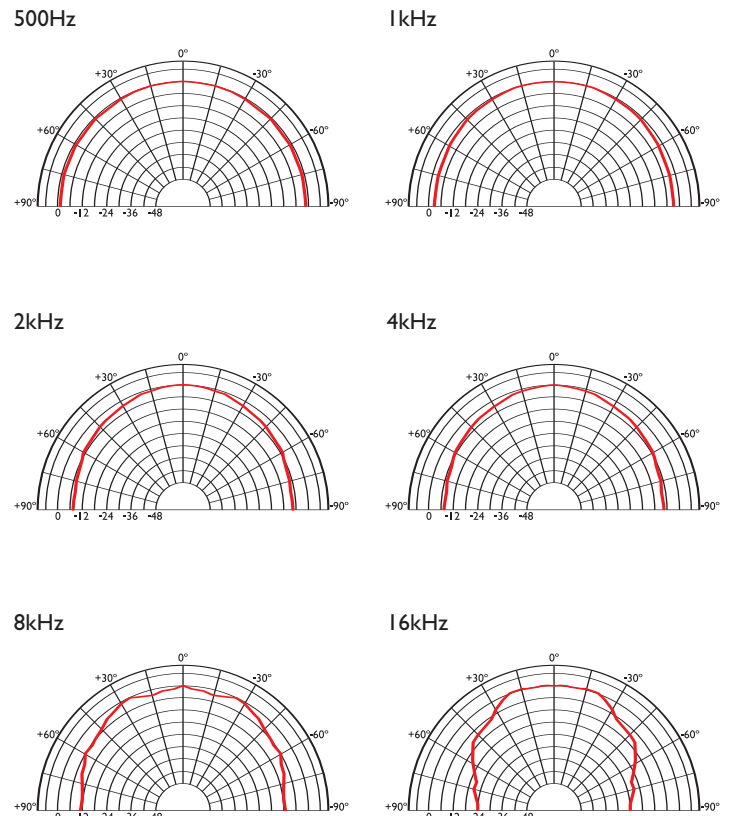


Ci200.2QS/QR

Installation



Polar graphs



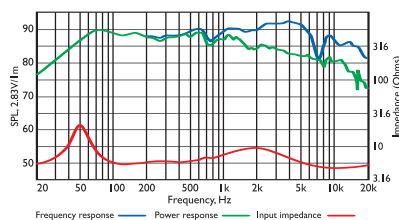
Architectural specifications:

The Ci Series Ci200.2QS and Ci200.2QR comprise Uni-Q® coincident mounted 25mm soft dome ferrofluid cooled tweeter with 200mm white polypropylene bass/mid unit. Performance should meet or exceed the following criteria: frequency response 1 metre on-axis with swept

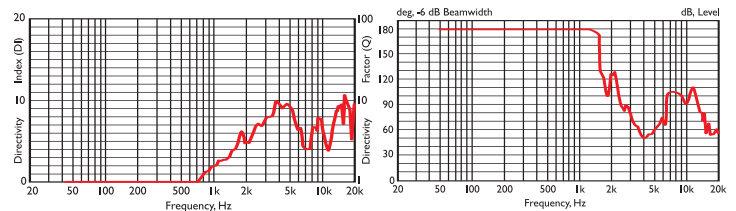
sinewave shall be 43Hz to 20 kHz, sensitivity shall be at least 89dB for 2.83V@1m. The impedance and maximum power shall be 100W at 8 ohms. The Ci Series Ci200.2QS and Ci200.2QR is best suited where high quality music and speech reinforcement applications require hi-fi performance such as:

- Multi Room systems.
- Home Theatre systems.
- Lounges, Bars, Boutiques.
- Boardrooms & Offices.
- Airports, Convention Centres, Hotels.
- Live Theatre/Concert Hall fill-in.
- Houses of Worship.
- Sports Arenas.

Frequency / Power response, Input impedance



Directivity Index / Beamwidth



Specifications

Frequency range	43Hz - 20kHz
Sensitivity (2.83v @ 1m)	89dB
Rec. amplifier power	10 - 100W
Nominal Impedance	8Ω (min. 4.8Ω)
Crossover Frequency	2.7kHz

Enclosure material	N/A
Terminals	spring terminals up to Ø2.5mm (0.1") conductor
Dimensions (H x W x D)	265 x 265 x 107 mm, 10.4 x 10.4 x 4.2 in.
Net weight	2.1kg (4.6lbs)

Free Manuals Download Website

<http://myh66.com>

<http://usermanuals.us>

<http://www.somanuals.com>

<http://www.4manuals.cc>

<http://www.manual-lib.com>

<http://www.404manual.com>

<http://www.luxmanual.com>

<http://aubethermostatmanual.com>

Golf course search by state

<http://golfingnear.com>

Email search by domain

<http://emailbydomain.com>

Auto manuals search

<http://auto.somanuals.com>

TV manuals search

<http://tv.somanuals.com>