

## KEF UNI-Q® LOUDSPEAKERS



# Ci200.3QS/QR

## Information Sheet



These are the Ci200.3QS and Ci200.3QR flagship ceiling speakers offering outstanding performance. Audiophile quality sound is derived from KEF's Uni-Q® driver array technology, providing your room with an expansive soundscape, excellent bass extension and so creating the perfect sound stage. Deciding whether to place the Ci200.3QS and Ci200.3QR in the walls or ceiling has never been more simple. Thanks to KEF's simple and ingenious screw down clamping system you'll find them easy and quick to install.

Designed with moisture-resistant fixings allowing placement in the harshest environments such as bathrooms or kitchens.

The Ci200.3QS and Ci200.3QR offer excellent quality with no sacrifice.

### Features and Benefits:

The new slender bezel and contemporary grille design of the new Ci200.3 models combine to make the finished installation less intrusive than it's predecessors.

The Uni-Q array features a new 25mm (1in.) aluminium dome high frequency unit mounted coincidentally into a new 200mm (8in.) polypropylene bass/mid range unit providing improved dynamic capability. A new crossover design provides the new Ci200.3 models with superb off-axis dispersion characteristics.

Like all KEF Ci in-wall products, the bezel and grille can be painted to match the interior décor.

**Ci series**  
custom installation speakers

[www.kef.com](http://www.kef.com)

**KEF®**

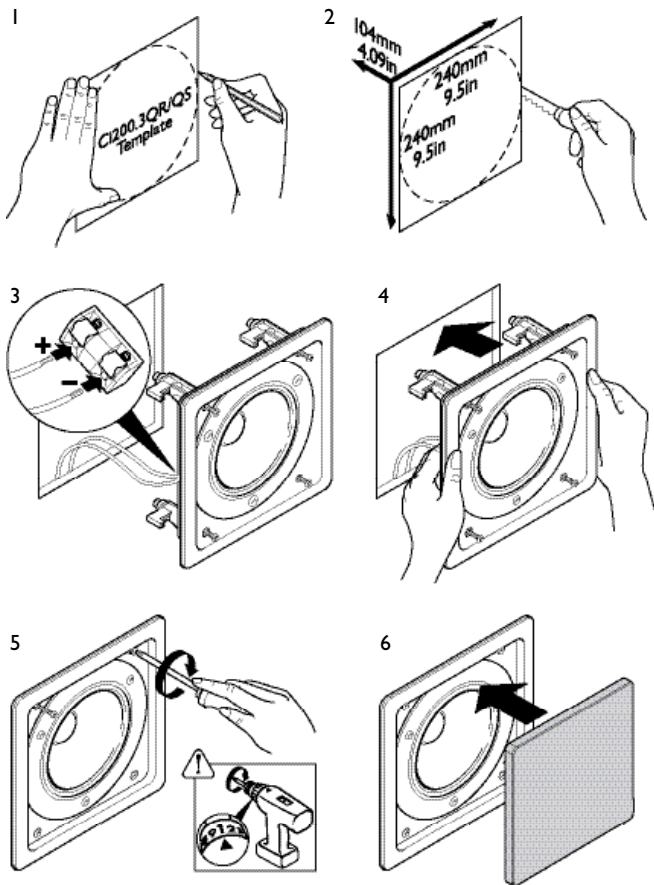
GP Acoustics (UK) Ltd., Eccleston Road, Tovil, Maidstone, Kent, ME15 6QP U.K. Telephone: + 44 (0) 1622 672261. Fax: + 44 (0) 1622 750653

GP Acoustics (US) Inc., 10 Timber Lane, Marlboro, New Jersey, 07746 USA. Telephone: + 1 732 683 2356. Fax: + 1 732 683 2358

GP Acoustics GmbH, Heinrichstraße 51, D-44536 Lünen, Deutschland. Telephone: +49 (0) 231 9860-320. Fax: +49 (0) 231 9860-330.

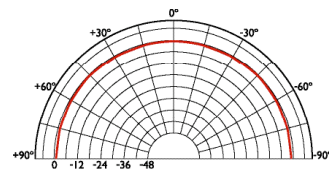
# Ci200.3QS/QR

## Installation

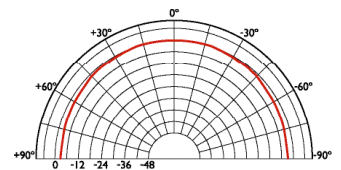


## Polar graphs

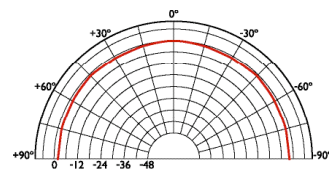
500Hz



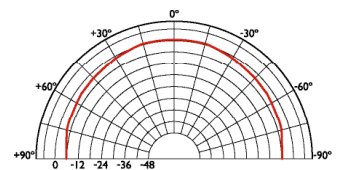
1kHz



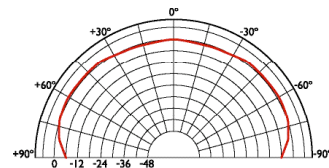
2kHz



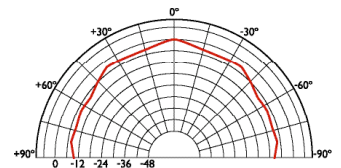
4kHz



8kHz



16kHz

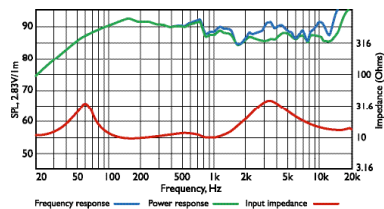


### Architectural specifications:

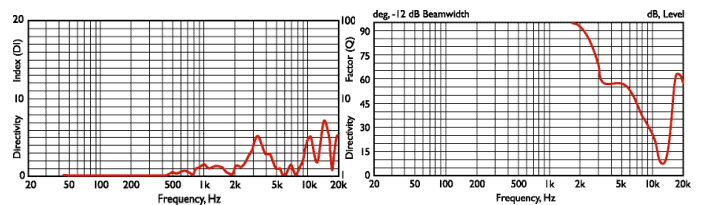
The Ci Series Ci200.3QS and Ci200.3QR is best suited where high quality music and speech reinforcement applications require hi-fi performance such as:

- Multi Room systems.
- Home Theatre systems.
- Lounges, Bars, Boutiques.
- Board rooms & Offices.
- Airports, Convention Centres, Hotels.
- Live Theatre/Concert Hall fill-in.
- Houses of Worship.
- Sports Arenas.

## Frequency / Power response, Input impedance



## Directivity Index / Beamwidth



## Specifications

Frequency range	43Hz - 20kHz
Sensitivity (2.83v @ 1m)	89dB
Rec. amplifier power	10 -100W
Nominal Impedance	6Ω (min. 3.9Ω)
Crossover Frequency	1.8kHz

Enclosure material	N/A
Terminals	spring terminals up to Ø2.5mm (0.1") conductor
Dimensions (H x W x D)	275 x 275 x 110 mm, 10.82 x 10.82 x 4.33 in. QS Ø 275 x 110 mm, 10.82 x 4.33 in. QR
Net weight	2.1kg (4.6lbs)

## Free Manuals Download Website

<http://myh66.com>

<http://usermanuals.us>

<http://www.somanuals.com>

<http://www.4manuals.cc>

<http://www.manual-lib.com>

<http://www.404manual.com>

<http://www.luxmanual.com>

<http://aubethermostatmanual.com>

Golf course search by state

<http://golfingnear.com>

Email search by domain

<http://emailbydomain.com>

Auto manuals search

<http://auto.somanuals.com>

TV manuals search

<http://tv.somanuals.com>