



# Ci 100QR

## Information Sheet



The quality of a speaker is no less important just because it's out of sight - in fact, with ceiling-mounted units, it can be more so. Designed to smoothly integrate and architecturally match with existing downlighting sharing the same size bezel, KEF's trademark Uni-Q® technology has a decisive performance advantage in these applications, because each point source

driver array evenly disperses the sound, ensuring a smooth frequency response over a large area to create a spacious three-dimensional soundscape with genuine texture and depth. With a two-way Uni-Q driver of 100mm (4"), the Ci 100QR is as satisfyingly musical to hear as it is neat in appearance.

### Features and Benefits:

Purpose built for flush mounting into walls and ceilings these are the latest addition to the KEF Uni-Q Custom Installation series. Providing a compact solution to the problem of Hi-Fi quality sound from an in-wall/ceiling speaker, the Ci 100QR consists of a polypropylene cone LF driver with the HF unit mounted at the acoustic centre of the LF unit.

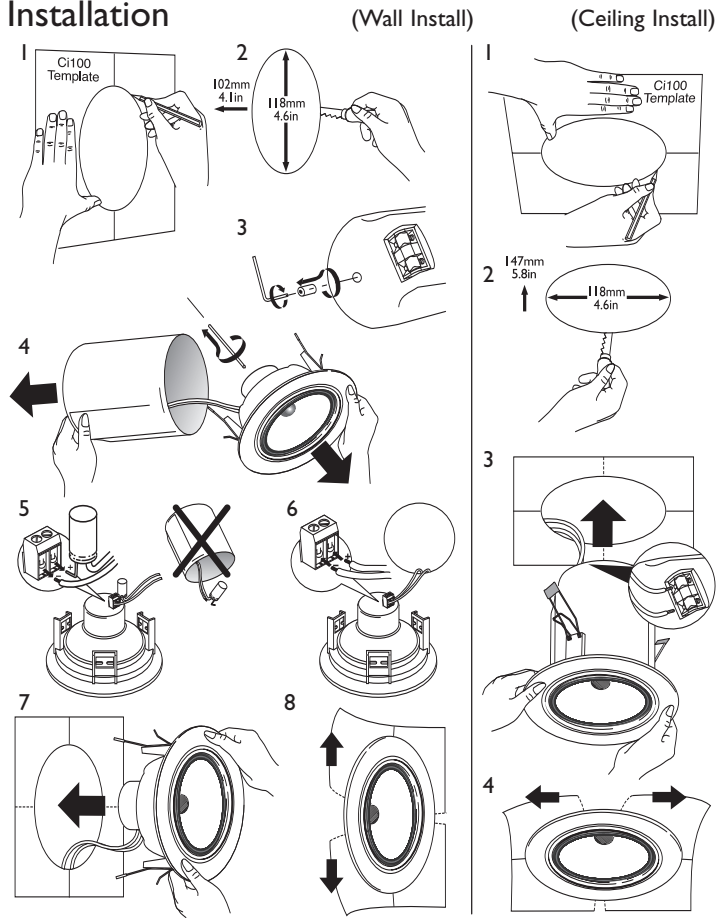
The bezel and grill can be painted to match the interior décor.

**Ci series**  
custom installation speakers

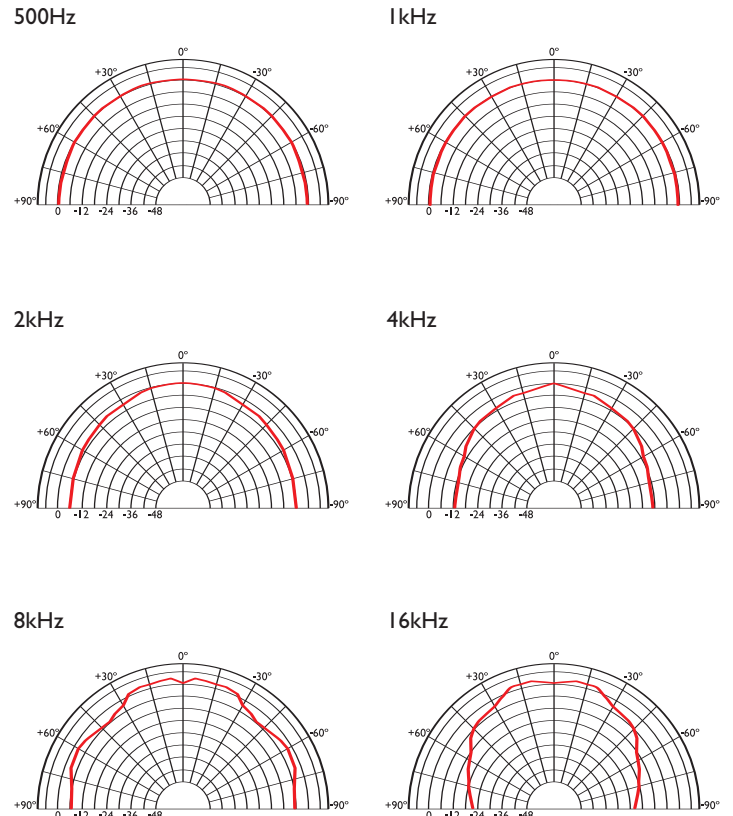


# Ci 100QR

## Installation



## Polar graphs



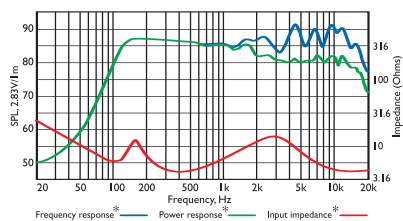
### Architectural specifications:

The Ci Series Ci100QR comprises Uni-Q® 19mm aluminium dome tweeter with 100mm white polypropylene bass/mid unit with double neo compound magnet system. Performance should meet or exceed the following criteria: frequency response

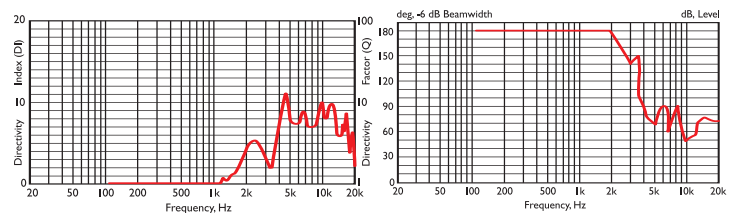
1 metre on-axis with swept sine wave shall be 80Hz to 27kHz, sensitivity shall be at least 88dB for 2.83V@1m. The impedance shall be 4 ohms. The Ci Series Ci100QR is best suited where high quality music and speech reinforcement applications require hi-fi performance such as:

- Multi Room systems.
- Home Theatre systems.
- Lounges, Bars, Boutiques.
- Boardrooms & Offices.

## Frequency / Power response, Input impedance



## Directivity Index / Beamwidth



## Specifications

Frequency range	110Hz - 27kHz*	80Hz - 27kHz**
Sensitivity (2.83v @ 1m)	88dB	
Rec. amplifier power	10 - 50W	
Nominal Impedance	4Ω (min. 4.1Ω)	
Crossover Frequency	3kHz	

Enclosure material	ABS	
Terminals	spring terminals up to Ø2.5mm (0.1") conductor	
Dimensions (Ø x depth)	Ø127 x 153 mm, 5 x 6 in.*	Ø127 x 100 mm, 5 x 4 in.**
Net weight	0.8kg (1.76lbs)*	0.7kg (1.54lbs)**

\*With back can \*\*Without back can

## Free Manuals Download Website

<http://myh66.com>

<http://usermanuals.us>

<http://www.somanuals.com>

<http://www.4manuals.cc>

<http://www.manual-lib.com>

<http://www.404manual.com>

<http://www.luxmanual.com>

<http://aubethermostatmanual.com>

Golf course search by state

<http://golfingnear.com>

Email search by domain

<http://emailbydomain.com>

Auto manuals search

<http://auto.somanuals.com>

TV manuals search

<http://tv.somanuals.com>