



Ci130DS

Information Sheet



When partnering with others in the range try the Ci130DS as the perfect companion for creating a high performance built-in home theatre.

A 2-way, 3 driver, flush-mount dipole loudspeaker, it can be mounted in the walls or ceiling allowing far greater flexibility in positioning than any of the competition. Housed in the enclosure to ensure optimum performance regardless of the volume of cavity placement, the pair of

mid/HF units are angled 80° apart - to obtain a dipolar radiation pattern - with the bass unit firing on-axis to the listening position. The driver configuration is set into a moulded baffle with smooth contours to improve dispersion. With its unique properties such as switchable bipole/dipole radiation pattern the Ci130DS makes a versatile partner with others in the range such as the Ci200.2QT.

Features and Benefits:

Ci130DS combines 60W power handling and 88dB sensitivity for a maximum output of 106dB.

The 3-driver configuration has a mounting depth of just 88mm (3½").

Best suited to high quality Music Surround and Home Theatre applications, for all the usual surround sound (including digital) formats.

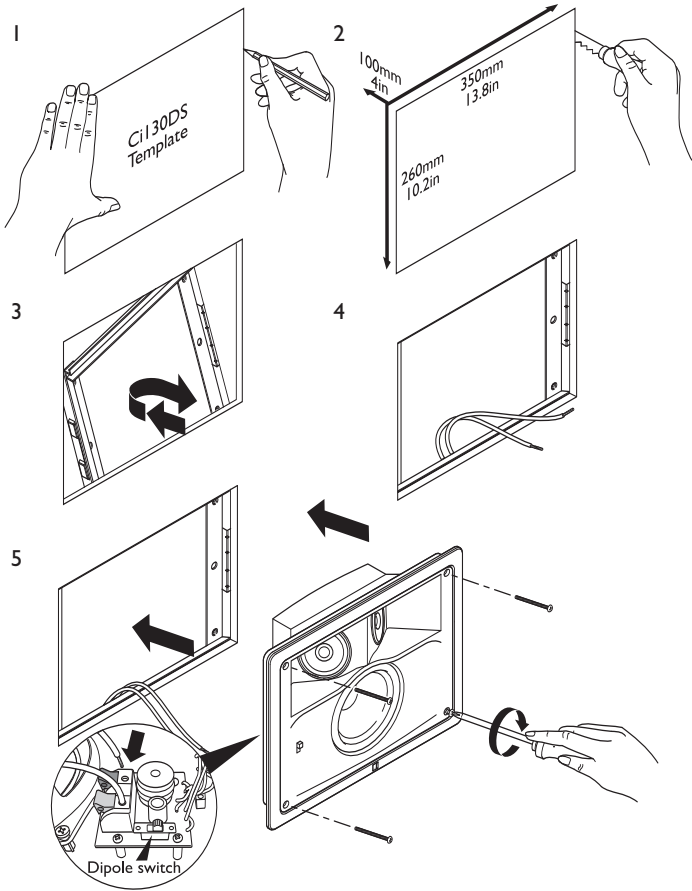
The stainless steel bezel and grille can be painted or covered by fabric to match the interior décor.

Ci series
custom installation speakers



Ci130DS

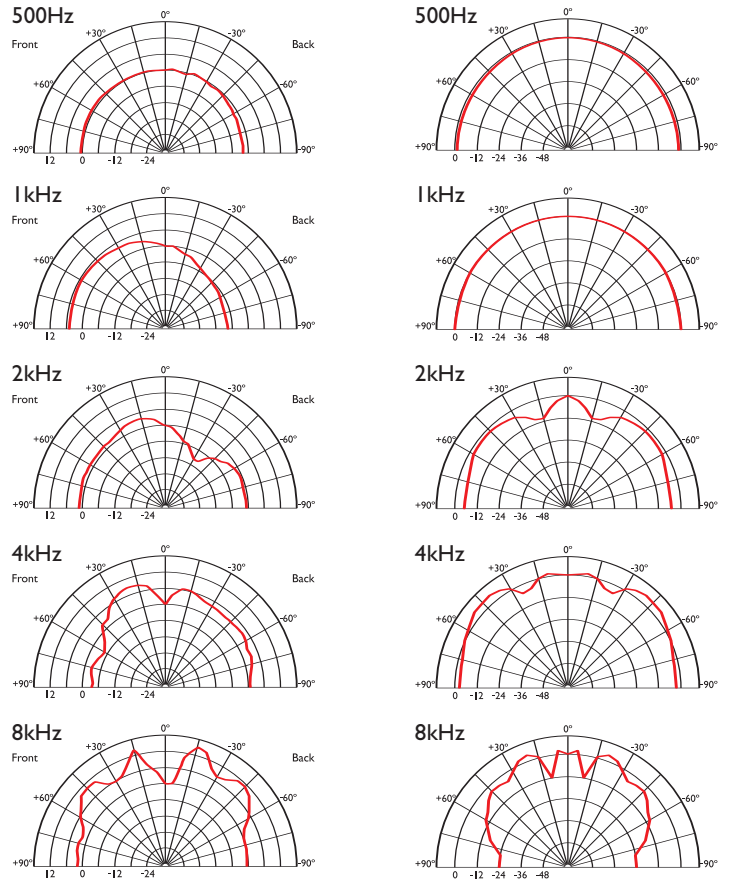
Installation



Polar graphs

Dipole

Bipole



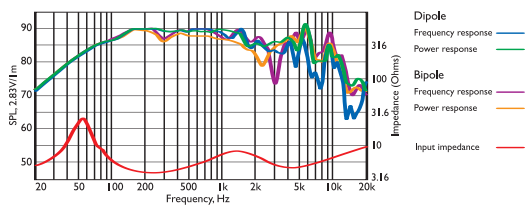
Architectural specifications:

The Ci Series Ci130DS comprise two 80mm polypropylene mid/HF units and one 130mm polypropylene bass unit. Performance should meet or exceed the following criteria: frequency response 1 metre on-axis with swept sinewave shall be 70Hz to 8kHz, sensitivity shall be at

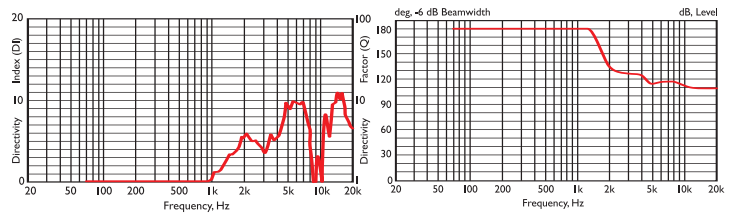
least 88dB for 2.83V@1m. The impedance and maximum power shall be 60W at 4 ohms. The Ci Series Ci130DS is a bipole/dipole loudspeaker, best suited at the rear side or back walls or rear of ceilings where high quality theatre applications require hi-fi performance such as:

- Multi Room systems.
- Home Theatre systems.
- Boardrooms & Offices.

Frequency / Power response, Input impedance



Directivity Index / Beamwidth (Bipole mode)



Specifications

Frequency range	70Hz - 8kHz
Sensitivity (2.83v @ 1m)	88dB
Rec. amplifier power	10 - 60W
Nominal Impedance	4Ω (min. 3.9Ω)
Crossover Frequency	750Hz

Enclosure material	N/A
Terminals	spring terminals up to Ø2.5mm (0.1") conductor
Dimensions (H x W x D)	277 x 367 x 103 mm, 10.9 x 14.4 x 4 in.
Net weight	2.8kg (6.2lbs)

Free Manuals Download Website

<http://myh66.com>

<http://usermanuals.us>

<http://www.somanuals.com>

<http://www.4manuals.cc>

<http://www.manual-lib.com>

<http://www.404manual.com>

<http://www.luxmanual.com>

<http://aubethermostatmanual.com>

Golf course search by state

<http://golfingnear.com>

Email search by domain

<http://emailbydomain.com>

Auto manuals search

<http://auto.somanuals.com>

TV manuals search

<http://tv.somanuals.com>