



CiFDT

Information Sheet



A motorised dipole surround sound speaker, the CiFDT combines genuinely unobtrusive installation with the ability to create stunningly realistic background effects. Lying flush with the wall when not in use, a sophisticated flat panel driver moves into position when switched on, radiating higher frequencies equally front and back to diffuse the sound evenly throughout the room, while low frequency

effects are being faithfully reproduced by the integral 130mm (5") bass driver. Acoustically, the two technologies complement each other perfectly to generate a richly detailed ambient soundfield; aesthetically, the appearance couldn't be more discreet. As an architectural audio solution, it's imaginative, impeccably engineered and incredibly satisfying.

Features and Benefits:

Purpose built for flush mounting into walls, the CiFDT combines 100W power handling and 86dB sensitivity. A 110mm x 180mm (4 1/8" x 7") Flat panel with a 130mm (5") bass driver.

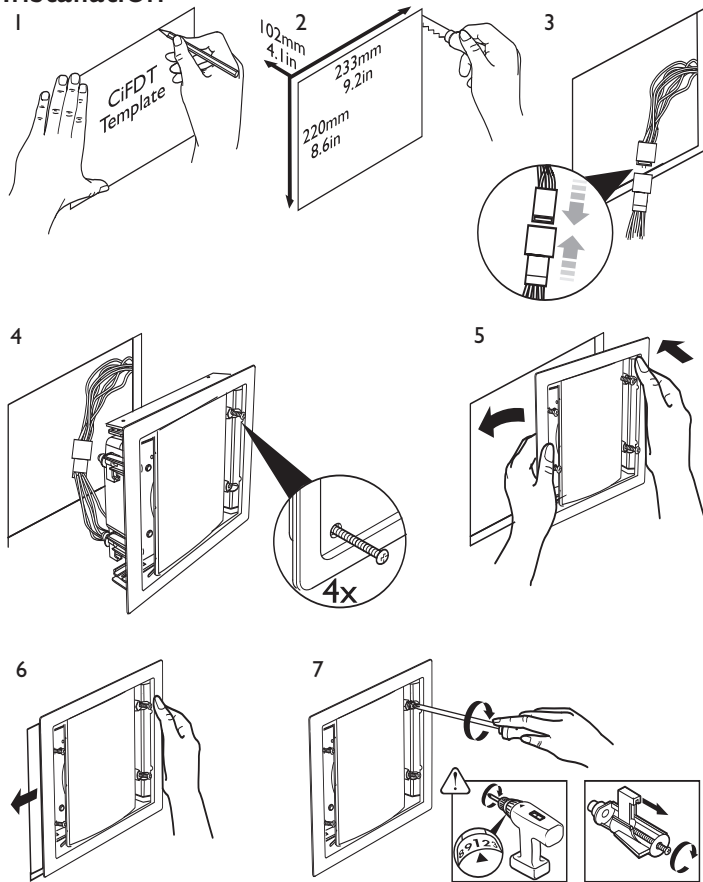
Will require an additional 12 volt supply. The bezel and grille can be painted or covered by fabric to match the interior décor.

Ci series
custom installation speakers



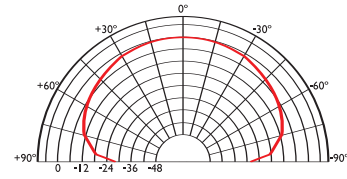
CiFDT

Installation

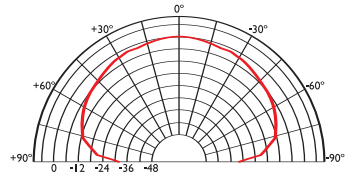


Polar graphs

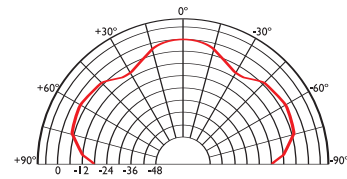
500Hz



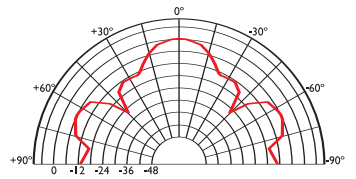
1kHz



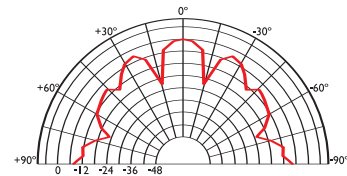
2kHz



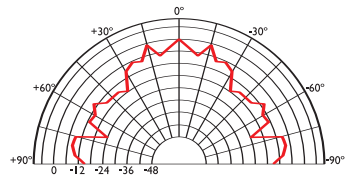
4kHz



8kHz



16kHz



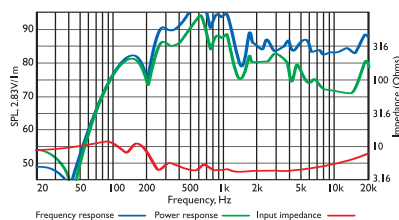
Architectural specifications:

The CiFDT comprises a 110mm x 180mm (4 1/8" x 7") Flat panel with a 130mm (5") bass driver. Performance should meet or exceed the following criteria: frequency response 1 metre on-axis with swept sine wave shall be 80Hz to 20kHz, sensitivity

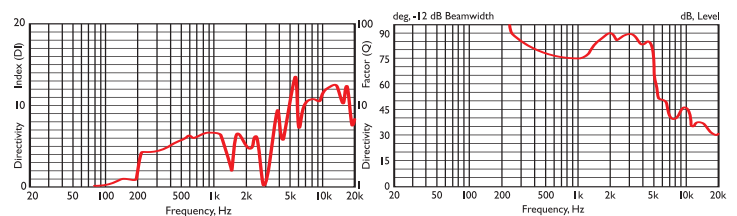
shall be at least 86dB for 2.83V@1m. The impedance and maximum power shall be 100W at 8 ohms. The CiFDT is best suited for high quality music and home theatre applications where hi-fi performance is required, such as:

- Multi Room systems.
- Home Theatre systems.

Frequency / Power response, Input impedance



Directivity Index / Beamwidth



Specifications

Frequency range	80Hz - 20kHz
Sensitivity (2.83v @ 1m)	86dB
Rec. amplifier power	20 - 100W
Nominal Impedance	8Ω (min. 3.2Ω)
Crossover Frequency	180Hz

Enclosure material	Steel
Terminals	terminal blocks up to Ø2.5 mm (0.1") conductor
Dimensions (H x W x D)	248 x 248 x 103 mm, 9.75 x 9.75 x 4 in.
Net weight	1.5kg (3.3lbs)

Free Manuals Download Website

<http://myh66.com>

<http://usermanuals.us>

<http://www.somanuals.com>

<http://www.4manuals.cc>

<http://www.manual-lib.com>

<http://www.404manual.com>

<http://www.luxmanual.com>

<http://aubethermostatmanual.com>

Golf course search by state

<http://golfingnear.com>

Email search by domain

<http://emailbydomain.com>

Auto manuals search

<http://auto.somanuals.com>

TV manuals search

<http://tv.somanuals.com>