

MODEL: FR600V, FR651V, FR691V, FR730V, FS481V, FS541V, FS651V, FS691V, FS730V, FX481V, FX600V, FX651V, FX691V, FX730V

TITLE: ROCKER ARM CHANGE

FACTORY DIRECTED MODIFICATION

Detail

Certain FR, FS, FX, Engine Models may experience rocker arm failure and/or premature wear. Rocker arm and rocker case gasket part kits have been made available to eliminate this possibility during engine operation.

Kawasaki Action

Kawasaki has initiated a Factory Directed Modification (FDM) campaign to replace the rocker arms on all eligible units according to the "Required Action in Field" section of this Service Information Bulletin.

Eligibility

Units within the engine serial number ranges listed in the "Eligible Engine Table" below are eligible for this FDM. The "Eligible Engine Table" lists the engine model, specification and serial number range for eligible units. Eligible units will require replacement rocker arms. All current engine shipments from Kawasaki have the updated parts installed.

Eligible Engine Table			
Model Number		Specification Number	Engine Serial Number Range
FR	600V	-AS05	A00045 ~ A00317
	651V	-AS10, -BS07, -BS51	A79263 ~ A79682
	691V	-AS05, -AS07, -AS10, -AS15, -BS09, -BS51	A40472 ~ A41991
	730V	-AS09, -BS07	A07290 ~ A07589
FS	481V	-AS11, -AS17, -BS00, -BS01, -BS05, -BS10, -BS51	A17430 ~ A18047
	541V	-AS14, -AS21, -AS51, BS04	A17704 ~ A18963
	651V	-AS05, AS11	A03466 ~ A03782
	691V	-AS09	A03878 ~ A03913
	730V	-AS50	A03350
FX	481V	-BS04	A00411 ~ A00422
	600V	-AS05, -AS13	A08214 ~ A08321
	651V	-AS08, -AS10, -BS00	A08849 ~ A09050
	691V	-AS14, -AS17, -AS18, -BS12	A05988 ~ A06129
	730V	-AS16, -AS17, -BS04	A14382 ~ A14429

See reverse side for additional information



Required Action in Field

Repair all eligible units including sold and unsold units in the field and unsold inventory. The repair consists of replacing the rocker arms.

Parts Information

Kawasaki will provide the replacement parts for the repair of all eligible rocker arm and rocker case gaskets. Please order the required kit quantity through the routine parts ordering system.

Replacement Kits for FDM

Kit Number	Part Name	Model	Qty. per engine
99999-0338	KIT	FR, FS, FX	1

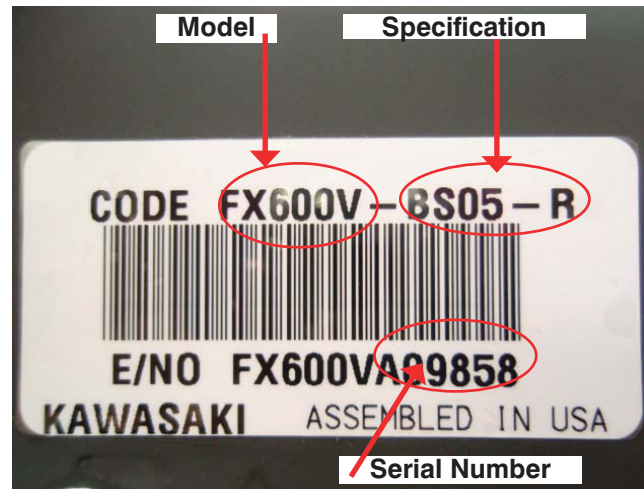
Kit Detail

Item	Part Number	Qty
Arm-Rocker	12016-2066	4
Gasket	11061-7083	2

Replacement Procedure

1. Confirm that the engine model, engine specification, and engine serial number match the "Eligible Engine Table" above before beginning the part replacement. Only engines within the serial number ranges listed are eligible for FDM.

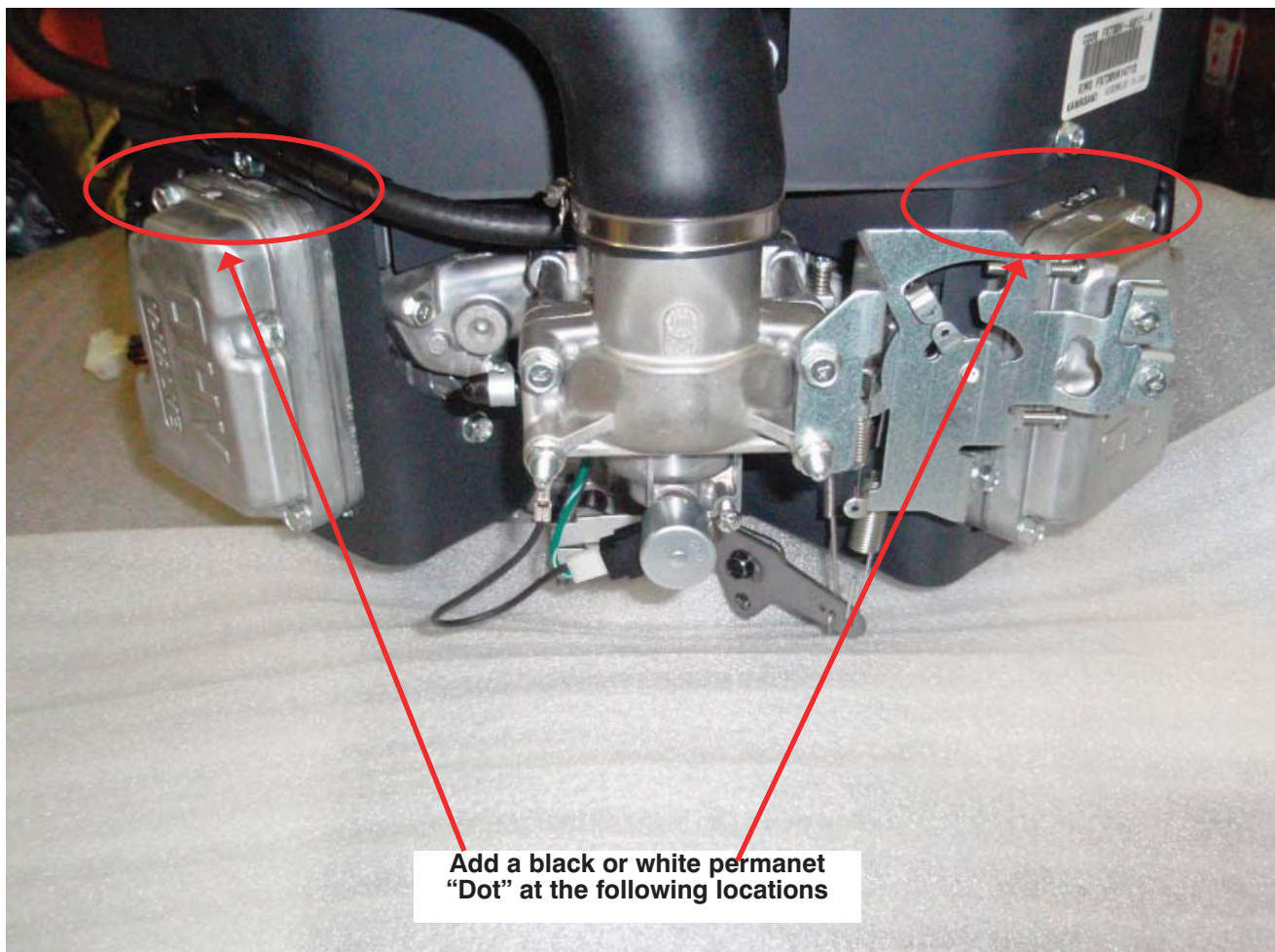
Engines that have a black or white 'DOT' mark (please see section 4 below) on the rocker cases signify that the repair has been completed (No need to repair).



2. Follow the appropriate Service Manual instructions to remove and replace the required parts [12016-2066 Arm-Rocker and 11061-7083 Rocker case Gasket].

3. The original parts should be destroyed and discarded appropriately.

4. As a quick reference to identify that the FDM has been applied, please add a non-fading permanent black or white "Dot" on the top of each rocker case as shown below.



----- **Warranty Information** -----

This is a factory directed modification that is acceptable only one time for each unit. Parts and labor costs will be reimbursed upon your warranty request.

Model	FR600V, FR651V, FR691V, FR730V, FS481V, FS541V, FS651V, FS691V, FS730V, FX481V, FX600V, FX651V, FX691V, FX730V
Flat Rate	0.8
PC/RC	F9/51
Causal Part	KIT
Causal Part No.	99999-0338
Quantity	0
Job Code	23716
Claim Type	3

KAWASAKI MOTORS CORP., U.S.A.

Free Manuals Download Website

<http://myh66.com>

<http://usermanuals.us>

<http://www.somanuals.com>

<http://www.4manuals.cc>

<http://www.manual-lib.com>

<http://www.404manual.com>

<http://www.luxmanual.com>

<http://aubethermostatmanual.com>

Golf course search by state

<http://golfingnear.com>

Email search by domain

<http://emailbydomain.com>

Auto manuals search

<http://auto.somanuals.com>

TV manuals search

<http://tv.somanuals.com>