

Kensington®

READ FIRST!

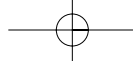
Portable Universal Docking Station User's Manual

Your life just got simpler

Tired of reconnecting all your desktop tools every time you return to your home or office with your notebook computer? With one simple USB connection, the Kensington Portable Universal Docking Station connects you instantly to your keyboard, mouse, printer, network, and USB devices.

Easily connect and disconnect devices without having to restart your computer. The docking station includes 7 ports for easy connectivity:

- 2 - high-speed USB 2.0 ports
- 1 - PS/2 keyboard port
- 1 - PS/2 mouse port
- 1 - Serial port
- 1 - Printer port (standard IEEE-1284 parallel port)
- 1 - 10/100 Ethernet port



System requirements

Included in this package

- The Kensington Portable Universal Docking Station
- USB 2.0 cable
- Power adaptor
- This User's Manual
- Driver CD

System requirements

Hardware:

- PC with a Pentium® processor or equivalent
- USB port (USB 2.0 recommended for faster data transfer) The docking station will work with a USB 1.x connection, but at maximum of 12 Megabits per second, compared to a maximum of 480 Megabits per second with USB 2.0.
- CD-ROM drive

Operating System:

- Windows® XP with Service Pack 1 or higher

Connecting the docking station

Installation instructions

Connecting the docking station

1. Plug the power adaptor jack into the side of the Kensington Portable Universal Docking Station as shown below. Connect the power adaptor to an electrical outlet.

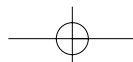


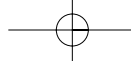
Connecting the Docking Station

The Power  icon glows when the docking station is powered.

2. Plug the square end of the USB cable into the USB upstream connector on the side of the docking station as shown above.
3. If your computer is not already running, start it now.
4. Plug the other end of the USB cable into an available USB port on your computer. There is no need to turn off your computer before you connect or disconnect a USB device.

The docking station is a high-speed USB 2.0 device. If you plug it into an older USB 1.x port or hub, Windows XP may display a warning message. Close the message window to continue. The docking station will work when connected to a USB 1.x port, but devices connected will operate at reduced speed.



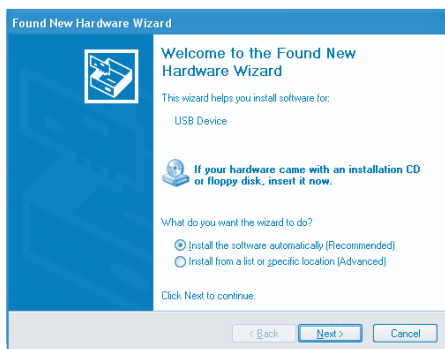


Installing the software

Installing the software

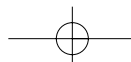
Windows XP will detect the docking station as a new device and begin the USB 2.0 device driver installation.

1. The Found New Hardware Wizard begins.

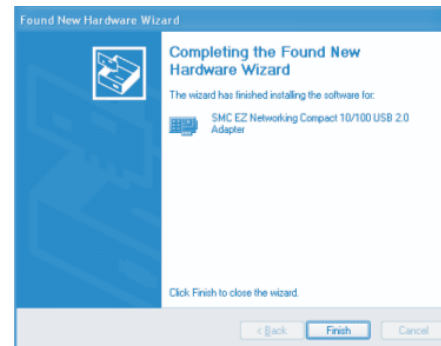


2. Place the Kensington driver CD into your CD drive. Select **Install the software automatically (Recommended)**, and click **Next** to continue.

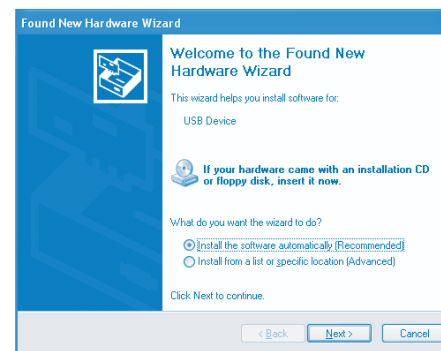
4



Installing the software



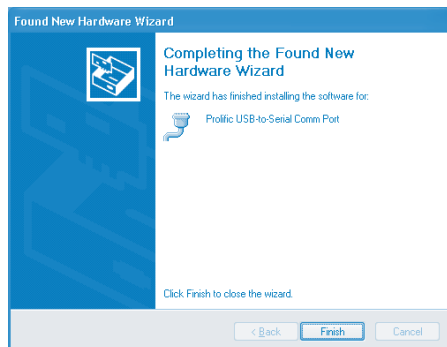
3. Click **Finish** to continue.
4. Next, Windows XP detects the serial port on the docking station.



5

Installing the software

5. Select **Install the software automatically [Recommended]**, and click **Next**.



6. The wizard has finished installing the software. Click **Finish** to continue.

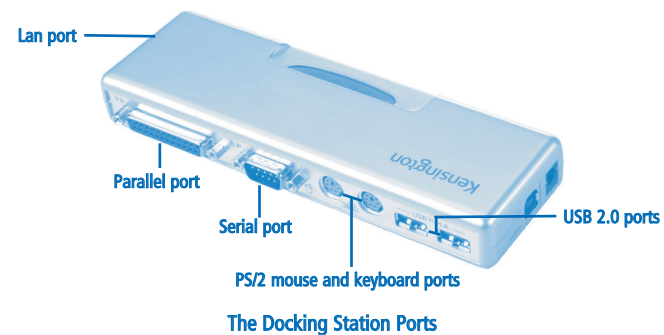
Windows installs the docking station's USB ports and other drivers automatically. When all drivers are installed, you will see the message: "Your new hardware is installed and ready to use."

Using the docking station

Using the docking station

Connecting devices to the docking station

You may connect devices to the docking station while the computer is running. A slight delay is normal before the computer recognizes the new device. Please see the instructions on page 8 for connecting a serial or parallel port device.

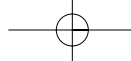


USB 2.0 ports

Connect any USB device to the docking station's USB ports.

PS/2 keyboard and mouse ports

Connect a PS/2 keyboard or mouse to the docking station. You can use your notebook computer's built-in keyboard and tracking device interchangeably with the devices connected to the docking station.



Using the docking station

Serial port

Connect a serial modem or other device to the docking station through the serial port. Windows XP will not detect the new device until you reset the docking station:

Follow the instructions on page 9 to safely disconnect the docking station's USB connector from your computer. Then re-connect the docking station.

Parallel port

Attach a parallel printer device through this port. If the docking station is connected to a USB 2.0 port on your computer, you will typically see faster printing results than through a standard parallel port. In some cases, Windows XP may not detect the new device until you reset the docking station as described for the serial port above.

Note: When using the Add Printer Wizard to install a new printer connected to the docking station, select **USB Virtual Printer Port** as your printer port.

Ethernet port

Connect your network cable to the Ethernet port for high-performance network access.

The first LAN  icon will glow when an Ethernet cable is connected. When the connection speed is 100 Mbps, the second LAN  icon will also glow.

The docking station's Ethernet port is a USB 2.0-to-fast-Ethernet adaptor, integrated with a USB 2.0 bus 10/100 Mbps Ethernet controller.

Disconnecting the docking station

Disconnecting the docking station

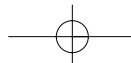
You can connect and disconnect the docking station at any time while the computer is running. It is important, however, to close your network connection prior to disconnecting the docking station.

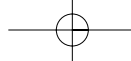
To safely unplug the docking station:

1. If the docking station is transferring data through one of its connections, wait until the data has finished transferring.
2. Then follow the instructions below to safely unplug the docking station.
 - a. Click the Safely Remove Hardware  icon in the system tray.
 - b. Select Safely Remove USB 2.0 10/100Base Ethernet Adapter
 - c. Disconnect the docking station from your computer's USB port.

Registering your Kensington product

Register your Kensington product online at www.kensington.com. At the bottom of the Web page, select **Register products**.





Technical support & warranty

FCC statement

Technical support

In North America, technical support is available to all registered users of Kensington products. You may find the answer to your problem in the Frequently Asked Questions (FAQ) section of the Support area on the Kensington Web site: www.kensington.com.

There is no charge for technical support except long distance charges where applicable. See the last page of this manual for contact information.

- Call from a phone where you have access to your computer.
- Be prepared to provide the following information:
 - Name, address, and telephone number
 - The name of the Kensington product
 - Make and model of your computer
 - Your system software and version
 - Symptoms of the problem and what led to them

1-Year Warranty

KENSINGTON TECHNOLOGY GROUP ("KENSINGTON") warrants this PRODUCT against defects in material and workmanship under normal use and service for one year from the original date of purchase. KENSINGTON, at its option, shall repair or replace the defective unit covered by this warranty. Please retain the dated sales receipt as evidence of the date of purchase. You will need it for any warranty service.

In order to keep this warranty in effect, the product must have been handled and used as prescribed in the instructions accompanying this warranty. This warranty does not cover any damage due to accident, misuse, abuse, or negligence. This warranty is valid only if the product is used on the computer or system specified on the product box. Please check product box for details, or call technical support.

Repair or replacement, as provided under this warranty, is your exclusive remedy. KENSINGTON shall not be liable for any incidental or consequential damages. Implied warranties of merchantability and fitness for a particular purpose on this product are limited in duration to the duration of this warranty. Some states/countries do not allow the exclusion or limitation of incidental or consequential damages, so the above limitation or exclusion may

not apply to you. Some states/countries do not allow limitations on how long an implied warranty lasts, so the above limitation may not apply to you. This warranty gives you specific legal rights, and you may also have other rights that vary from state to state and country to country.

Federal Communications Commission Radio Frequency

Interference Statement

Note: The Kensington Portable Universal Docking Station has been tested and found to comply with the limits for a Class B digital device, pursuant to Part 15 of the FCC Rules. These limits are designed to provide reasonable protection against harmful interference in a residential installation. This equipment generates, uses and can radiate radio frequency energy and, if not installed and used in accordance with the instructions, may cause harmful interference to radio communications.

However, there is no guarantee that interference will not occur in a particular installation. If this equipment does cause harmful interference to radio or television reception, which can be determined by turning the equipment off and on, the user is encouraged to try to correct the interference by one or more of the following measures:

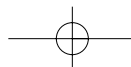
- Reorient or relocate the receiving antenna.
- Increase the separation between the equipment and receiver.
- Connect the equipment into an outlet on a circuit different from that to which the receiver is connected.
- Consult the dealer or an experienced radio/TV technician for help.

MODIFICATIONS: Modifications not expressly approved by Kensington may void the user's authority to operate the device under FCC regulations and must not be made.

SHIELDED CABLES: In order to meet FCC requirements, all connections to equipment using a Kensington input device should be made using only the shielded cable provided.

Declaration of Conformity Compliance Statement for the Kensington Portable Universal Docking Station

The Kensington Portable Universal Docking Station model no. K33055 complies with Part 15 of the FCC Rules. Operation is subject to two conditions: (1) This device may not cause harmful interference, and, (2) this device must accept any interference received, including interference that may cause undesired operation. As defined in Section 2.909 of the FCC Rules, the responsible party for this device is Kensington Technology Group, 2000 Alameda de las Pulgas, Second Floor, San Mateo, CA 94403, (650) 572-2700.



Contacting Kensington

Contacting Kensington

Troubleshooting information and answers to frequently asked questions are available 24 hours a day on the Kensington Web site at support.kensington.com.

Support by Telephone

Technical Support is available by telephone. Please visit www.kensington.com for hours.

US 800-535-4242 or 650-572-2700

Fax 650-572-9675

Canada 800-268-3447

Mexico 001-880-535-4242



Kensington Technology Group
2000 Alameda de las Pulgas
Second Floor
San Mateo, CA 94403
USA

ACCO Europe PLC
Nepicar House, London Road
Wrotham Heath, Sevenoaks
Kent TN15 7RS,
UNITED KINGDOM

Acco Canada Inc.
5 Precidio Court
Brampton, Ontario L6S 6B7
CANADA

www.kensington.com

This manual is copyright ©2003 Kensington Technology Group, a division of ACCO Brands, Inc. Any unauthorized copying, duplicating, or other reproduction of the contents hereof is prohibited without written consent from Kensington Technology Group. All rights reserved. 04/03

Kensington is the registered trademark of ACCO World Corporation. Microsoft and Windows are registered trademarks of Microsoft, Inc. All other registered and unregistered trademarks are the sole property of their respective owners.

901-0451-00

Free Manuals Download Website

<http://myh66.com>

<http://usermanuals.us>

<http://www.somanuals.com>

<http://www.4manuals.cc>

<http://www.manual-lib.com>

<http://www.404manual.com>

<http://www.luxmanual.com>

<http://aubethermostatmanual.com>

Golf course search by state

<http://golfingnear.com>

Email search by domain

<http://emailbydomain.com>

Auto manuals search

<http://auto.somanuals.com>

TV manuals search

<http://tv.somanuals.com>