

## Specifications

### Built-in flash memory

: 1 GB\*1

### Headphone output

: 3.5 mm stereo mini jack  
: 4.5 + 4.5 mW/ 16 Ω

### USB jack

: USB 2.0/ USB 1.1

### Display

: 1.1 inch 256 colors OLED

### Main unit dimensions (W × H × D)

: 37.0 mm × 67.0 mm × 15.5 mm  
(1-7/16 × 2-5/8 × 5/8 inch)

### Weight (Net)

: Approx. 31 g (without battery)  
(Approx. 0.07 lbs)  
: Approx. 44 g (including battery)  
(Approx. 0.10 lbs)

### Battery type

: AAA size Ni-MH rechargeable battery  
: AAA (LR03) size alkaline battery

### Battery operation time \*2

#### Rechargeable battery operation

Continuous play time  
MP3 (128 kbps): Approx. 10 hours  
WMA (64 kbps): Approx. 8 hours  
Continuous FM broadcasting reception time  
: Approx. 5.5 hours

#### Alkaline battery operation

Continuous play time  
MP3 (128 kbps) : Approx. 11 hours  
WMA (64 kbps) : Approx. 8.5 hours  
Continuous FM broadcasting reception time  
: Approx. 5 hours

### FM receiver

Frequency range (50 kHz space)  
: 87.50 MHz – 108.00 MHz  
Channel: Stereo/Monaural  
Preset stations: 32

### Playback format

#### MP3

Sampling rate: 44.1 kHz  
Bit rate: 64 - 320 kbps  
Variable bit rate: 64 - 320 kbps  
ID3 tag: ver. 2.2/ 2.3/ 2.4

#### WMA (DRM compatible)

Sampling rate: 44.1 kHz  
Bit rate: 32 - 320 kbps  
Variable bit rate: 32 - 355 kbps

#### WAV

Sampling rate: 44.1 kHz  
Bit count: 16 bits  
Channel: Stereo/Monaural

### Maximum number of files

: 3,000

### Maximum number of folders

: 4,000

### Max. recording time/ tracks \*3

: Approx. 32 hours/ Approx. 480 tracks

• Kenwood follows a policy of continuous advancements in development. For this reason specifications may be changed without notice.

• The full performance may not be exhibited in an extremely cold location (under a water-freezing temperature).

\*1 One GB (gigabytes) is equal to 1,000,000,000 bytes. The actual capacity after formatting may be smaller than the nominal capacity.

\*2 Using the provided headphones, Supreme: "Off", Sound mode: "NORMAL".

\*3 Assuming that each tracks is in the 64 kbps WMA format with playback time of about 4 min.

# KENWOOD

DIGITAL AUDIO PLAYER

## M1GC7

## QUICK START MANUAL

Kenwood Corporation

### Reading the PDF Instruction Manual

The Instruction Manual is saved as a PDF file in the following folder of the Player. Copy this file into your PC before reading it.

[My Computer] – [KENWOOD\_DAP] – [Manual]

Refer to "Recharging Battery/ Connecting a PC" for details.



© B60-5660-10/01 (E) 0610

## KENWOOD

### For your records

Record the serial number, found on the back of the unit, in the spaces designated on the warranty card, and in the space provided below. Refer to the model and serial numbers whenever you call upon your dealer for information or service on this product.

Model \_\_\_\_\_ Serial Number \_\_\_\_\_

### Information on Disposal of Old Electrical and Electronic Equipment (applicable for EU countries that have adopted separate waste collection systems)



Products with the symbol (crossed-out wheeled bin) cannot be disposed as household waste.

Old electrical and electronic equipment should be recycled at a facility capable of handling these items and their waste byproducts.

Contact your local authority for details in locating a recycle facility nearest to you.

Proper recycling and waste disposal will help conserve resources whilst preventing detrimental effects on our health and the environment.

### Trademark Information

- "Microsoft" and "Windows Media" are trademarks or registered trademarks of Microsoft Corporation in the USA and other countries.
- "Adobe Reader" is a trademark of Adobe Systems Incorporated.

Other system names and product names are also trademarks or registered trademarks of their respective developers. Note that the "™" and "®" markings are omitted in the text of this manual.

English

## Safety precautions

### **Caution:**

Read this page carefully to ensure safe operation.

### **WARNING :**

TO PREVENT FIRE OR ELECTRIC SHOCK, DO NOT EXPOSE THIS APPLIANCE TO RAIN OR MOISTURE.

## IMPORTANT SAFETY INSTRUCTIONS

**Read Instructions** – All the safety and operating instructions should be read before the product is operated.

**Retain Instructions** – The safety and operating instructions should be retained for future reference.

**Heed Warnings** – All warnings on the product and in the operating instructions should be adhered to.

**Follow Instructions** – All operating and use instructions should be followed.

**1. Power sources** – The appliance should be connected to a power supply only of the type described in the operating instructions or as marked on the appliance.

**2. Enclosure removal** – Never remove the enclosure. If the internal parts are touched accidentally, a serious electric shock might occur.

**3. Drop** – Do not drop the unit or apply strong shock to it. (Damage due to dropping the unit is not covered by the warranty.)

**4. Ventilation** – Avoid hindering the ventilation of the appliance by covering it with a cloth, etc.

**5. Abnormal smell** – If an abnormal smell or smoke is detected, immediately turn the power OFF and pull out the power cord. Contact your dealer or nearest service center.

**6. Heat** – Avoid placing the appliance under direct sunlight or near a source of heat such as heating equipment. Particularly, never leave it in an automobile or on the dashboard.

**7. Temperature** – The appliance may not function properly if used at extremely low, or freezing temperatures. The ideal ambient temperature is above +5°C (41°F).

**8. Water and moisture** – The appliance shall not be exposed to dripping and splashing — for example, near a bathtub, washbowl, kitchen sink, laundry tub, in a wet basement, or near a swimming pool, etc. Do not place an object containing liquid, such as a flower vase, on the appliance.

**9. Dust and moisture** – Avoid places where is dusty or where the humidity is high.

**10. Vibrations** – Avoid placing the appliance on an unstable place such as a shelf or in a place subject to vibrations.

**11. Magnetic fields** – Keep the appliance away from sources of magnetic fields such as TV sets, speaker systems, radios, motorized toys or magnetized objects.

**12. Cleaning** – Do not use volatile solvents such as alcohol, paint thinner, gasoline, or benzine, etc. to clean the cabinet. Use a clean dry cloth.

**13. Nonuse periods** – The power cord of the unit should be unplugged from the outlet when left unused for a long period of time.

**14. Damage requiring service** – The appliance should be serviced by qualified service personnel when :

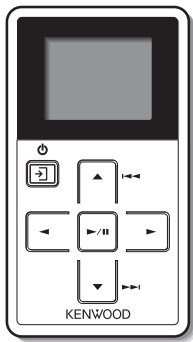
- A.** The power-supply cord or the plug has been damaged.
- B.** Objects have fallen, or liquid has been spilled into the appliance.
- C.** The appliance has been exposed to rain.
- D.** The appliance does not appear to operate normally or exhibits a marked change in performance.
- E.** The appliance has been dropped, or the enclosure damaged.

**15. Servicing** – The user should not attempt to service the unit beyond that described in the operating instructions. All other servicing should be referred to qualified service personnel.

### **Notes on using through car stereo**

- Do not leave the products or batteries in the car, particularly above the dashboard, for this may lead to malfunction or damage due to solar heat.
- If the unit is connected to a car stereo using an audio cord, noise may sometimes interfere.

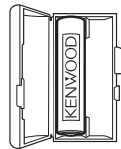
# Unpacking



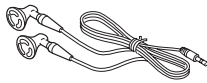
Player (main unit)



USB cable



Rechargeable battery



Headphones

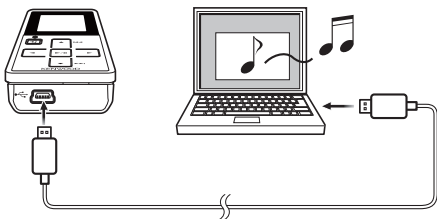


Strap

## Recharging Battery/ Connecting a PC

Using the provided USB cable, connect the Player to a PC. This makes it possible to transfer music from the PC to the Player and to recharge its battery.

### Recharging Battery/ Connecting a PC



- MEMO • Start up the PC before connecting the Player.
- The Player is switched ON automatically at the moment it is connected to the PC.
- When the USB connection, always use a supplied USB cable.
- The player should be connected directly to the USB port of the PC. We cannot guarantee the operation if the player is connected via a USB hub.

The Player and PC can be connected in either connection mode below.

Storage	Mode for data transfer and battery recharging. The Player cannot be operated while it is connected in this mode.
Player	Mode for operating the Player for playback, etc., while recharging the battery. Data transfer from the PC is not available in this mode.

### 1 Connect the Player to a PC.

### 2 Select the connection mode.



The connection mode selection menu is displayed after connection using the USB cable.

### Reading the PDF Instruction Manual

The Instruction Manual is saved as a PDF file in the following folder of the Player. Copy this file into your PC before reading it.

[My Computer] – [KENWOOD\_DAP] – [Manual]

After copying, you may delete the PDF file to increase the space for transferring more files. If you delete the PDF file by mistake, you can transfer it from the Kenwood website.

### PC system configuration requirements

OS	Microsoft® Windows® XP/2000
USB connector	Compliant to USB 1.1/2.0 standard (USB 2.0 recommended)

- MEMO • All of the above specified PC environment does not guarantee full operation of the Player.
- Use a PC in which either OS mentioned above is preinstalled. Operation is not guaranteed on a PC running an upgraded OS or a PC assembled by yourself.

### Recharging and battery indication

	(White)	Shows the remaining power of the battery.
	(Red)	Indications during recharging.
	(White)	The battery is nearly exhausted. Recharge it if it is rechargeable.
	(Red)	The battery is not inserted or not rechargeable.
	(ON)	The indicator lights during recharging.
	(OFF)	The indicator is extinguished when recharging completes.

Recharging completes in about 3 hours.

- MEMO • The Player can recharge only the NB-3A90 rechargeable battery that is provided but also available optionally. Never attempt to recharge a battery other than the dedicated battery from Kenwood.

### Disconnecting the Player from the PC

#### 1 Click the [Safe To remove Hardware] icon.



#### 2 Click [Safely remove USB Mass Storage Device].



When the message showing that the Player can be disconnected safely, disconnect it from the PC.

- MEMO • If the connection mode is the Player mode, simply unplug the USB cable from the PC.

## Capturing Music in PC/Transferring Music from PC

To play music files as tracks of this Player, first rip music files in the PC and then transfer them from the PC to this Player.

### The Player can play the following three types of music files.

- MP3 (\*.mp3) : MPEG-1 Audio Layer-3
- WMA (\*.wma) : Windows Media Audio
- WAV (\*.wav) : WAVE file (PCM)

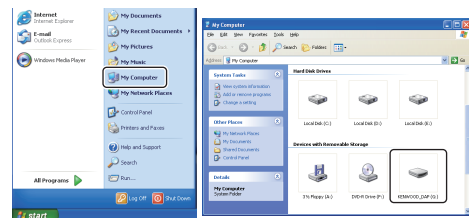
For detailed specifications, see "Specifications".

### Data transfer by drag & drop

Open the Windows Explorer and drag & drop the desired file from the PC's hard disk drive to this Player (expressed as [KENWOOD\_DAP] on Windows). Copy & paste can also be used for data transfer.

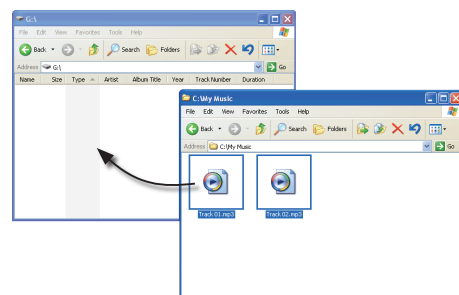
#### 1 Open the removable disk corresponding to this Player.

Click [Start] – [My Computer] – [KENWOOD\_DAP].



#### 2 Open the folder storing the desired music file.

#### 3 Drag & drop the music file into the removable disk.



### Using Windows Media Player 10/9

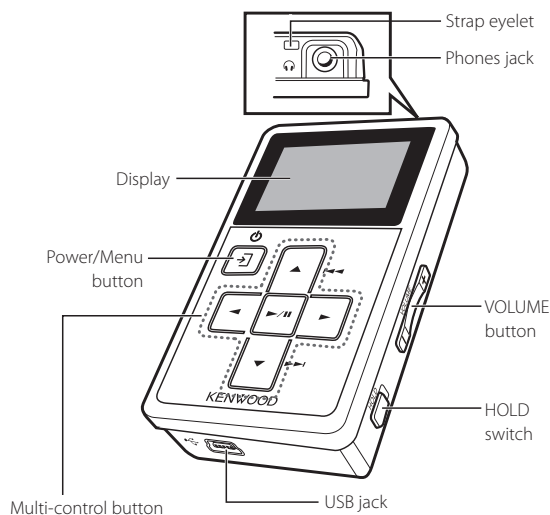
A music CD can be ripped into the PC using the Windows Media Player 10/9.

The obtained music files can then be transferred to the Player.

For details, refer to the Instruction Manual in the PDF file.(page 12)

- MEMO • Before transferring a music file, view it with the Windows Media Player 10/9 to confirm that the genre, artist name, album title and track title are set correctly.

## Names and functions of parts



### Power/Menu button

- Press shortly to open the pop-up menu. Pressing the button again closes the pop-up menu.
- Press and hold to switch the power ON/OFF.
- Press when the display is turned off (screen saver mode) to turn on the display.

### Multi-control button

#### ▲ Up button

- Press to move the cursor upward.
- Press during playback to skip to the beginning of the current track. Pressing the button at the beginning of a track skips to the beginning of the previous track.
- Press and hold to fast reverse the music.
- Also used for tuning stations during FM broadcast reception.

#### ▼ Down button

- Press to move the cursor downward.
- Press during playback to skip to the beginning of the next track.
- Press and hold to fast forward the music.
- Also used for tuning stations during FM broadcast reception.

#### ◀ Left button

- Press to return to the previous (left) display. This can be used for example to return from the playback display to the track list.

- Press and hold to return to the home screen.
- Also used to hide a pop-up menu.

#### ▶ Right button

- Press to enter an item and advance to the next (right) item.

#### ▶/|| Play/Pause button

- Press to play a track or let it pause.
- Press while the menu is displayed to enter a selected item.
- Also used to switch the tuning mode during FM broadcast reception.

#### VOLUME button

- Press to increase (+) or decrease (-) the volume. Pressing and holding a button segment varies the volume gradually.

#### HOLD switch

- Press to defeat all other buttons. This helps prevent erroneous operation of the Player when it is carried in a bag, etc.

#### Phones jack

- Connect the provided stereo headphones.

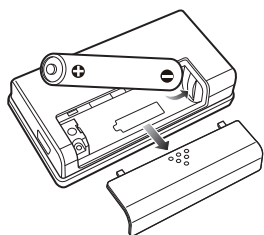
#### USB jack

- Connect to a PC using the provided USB cable to transfer music files or recharge the battery.

## Loading the battery

Insert the provided rechargeable battery in the Player.

A commercially available AAA (LR03) size alkaline battery can also be used.



### WARNING

If the alkaline fluid of the battery enter your eyes, immediately rinse with abundant water and see the doctor. Otherwise, loss of vision or injury may result.

### CAUTION

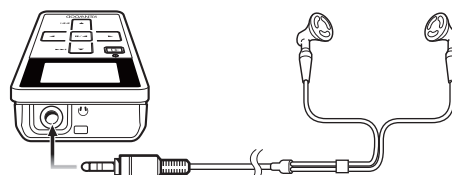
When inserting the battery, always fit the ⊖ end first. Do not insert the battery by force, as this may break the battery coating and cause short-circuiting, burst, fluid leak and/or burns.

### MEMO

- Before using the battery, connect the Player to the PC and fully recharge the battery.
- If (white) is displayed, connect the Player to the PC to recharge the battery.
- Always use the NB-3A90 rechargeable battery that is provided but also available optionally. Never attempt to recharge a battery other than the dedicated battery from Kenwood.
- If you use a dry cell battery, use an alkaline battery. Normal operation may not be possible if a manganese battery is used.

## Connecting stereo headphones

Connect the provided stereo headphones to the Player.

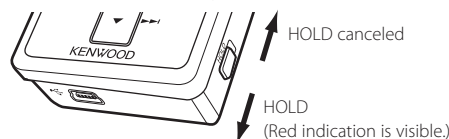


### MEMO

- If the headphone volume is increased too much, you will be unable to hear the sounds from outside. Be careful not to increase the volume too much.
- The headphones also play the role of an antenna. Always connect them when receiving FM broadcasting.

## Canceling the HOLD function

The HOLD function defeats all of the Player's buttons and helps prevent erroneous operation when the Player is carried in a bag, etc. The HOLD function should be canceled before using the Player.



### MEMO

- When the HOLD function is switched on and the display is in the screen saver mode, the Power/Menu button blinks twice every 5 seconds. is displayed when the display is turned on.

## Switching Power ON/OFF

- ### Switch the Player ON.

Press and hold the Power/Menu button until the KENWOOD logo is displayed. The Player enters the mode before the last time it was switched OFF.
- ### Switch the Player OFF.

Press and hold the Power/Menu button until the display is turned off.

## Setting the display language

- ### Select "Settings".
- ### Select "Language".
- ### Select the language.

Select the desired language.

## Selecting music for playback

To play the desired music, first select one of the items below.

	Artist	Select Artist name → Album title → Track title.
	Album	Select Album title → Track title.
	Track	Select Track title directly.
	Favorite	Select one of the tracks registered as favorite tracks.
	Genre	Select Genre → Artist name → Album title → Track title.
	Year	Select Year of release → Track title.
	Folder	Select Folder and then follow the hierarchy to select the music file for the desired Track.

When a major item is selected, the list of intermediate items located below it is displayed. Press the Play/Pause button when the item to be played (Track or item name) is displayed starts its playback.

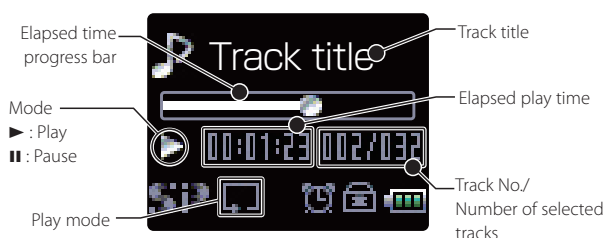
When a track is selected from the album title, the tracks are played in order they are recorded in the album. When a track is selected from other item, the tracks are played in order of track titles.

- 1 Connect headphones and switch the Player ON.**
- 2 Open the home screen.**  
Press and hold the Left button until the home screen appears.
- 3 Select a major item ("Artist", for example).**  
Press the Up/Down button to move the cursor to the desired item, and then press the Right button to enter the selection. The list for the major item (intermediate items) is displayed.
- 4 Select an intermediate item ("Artist 2", for example).**  
If the Play/Pause button is pressed now, all of the tracks in "Artist 2" will be played.
- 5 Select an intermediate item ("Album 2", for example).**  
If the Play/Pause button is pressed now, all of the tracks in "Album 2" will be played.
- 6 Select a track.**  
Playback of Album 2 begins with the selected track ("Track 2").

- MEMO**
- A track that does not contain tag information is classified as "Unknown".
  - If you commit a mistake and want to reselect an item, press the Left button to return to the previous item.
  - To restart the selection from the beginning, press and hold the Left button to return to the home screen.

## Display during playback

The display shows various information during playback.



## Operations available during playback

**Up button**  
Play mode: Each press skips to the beginning of the current track (Skip-down). Press and hold to fast reverse the track.  
Pause mode: Each press skips to the beginning of the current track (Skip-down). Press and hold to skip to the previous tracks one after another.

**Power/Menu button**  
Display the pop-up menu.

**Left button**  
Displays the previous list.

**Play/Pause button**  
Play mode: Lets playback pause temporarily.  
Pause mode: Resumes playback.

**Down button**  
Play mode: Each press skips to the beginning of the next track (Skip-up). Press and hold to fast forward the track.  
Pause mode: Each press skips to the beginning of the next track (Skip-up). Press and hold to skip to the subsequent tracks one after another.

- MEMO**
- The Player switches OFF automatically after it has been left in pause mode for a certain period of time (Auto Power-OFF). The time until Auto Power-OFF occurs can be changed (page 28 of the PDF manual).

## Various play modes

One of the following six play modes can be selected.


	Off	Playback stops after having played the tracks in the list.
	Repeat one	Playback of the same track repeatedly.
	Random	Playback of all of the tracks in the list in a random order, playing every track once.
	Repeat	Playback of all of the tracks in the list repeatedly.
	Repeat random	Repeated playback of all of the tracks in the list in a random order.
	Intro	Playback of the introduction parts of all of the tracks in the list, playing the first 10 seconds of every track.


The tracks in the list vary depending on the item used for selecting the track being played.

- 1 Display the pop-up menu.**  
Press during playback.
- 2 Select the play mode list.**
- 3 Select the desired play mode.**

## Selecting FM broadcasting

The Player can be used to receive FM broadcasting.

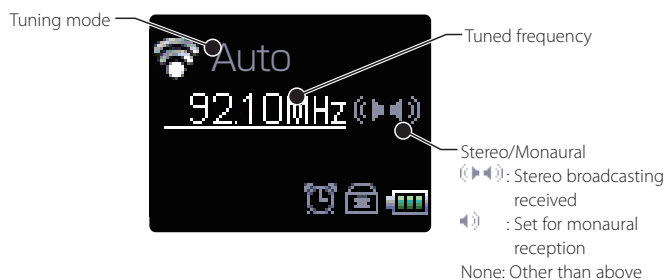
- Open the home screen.**


Press and hold the Left button until the home screen appears.
- Select the FM radio mode.**


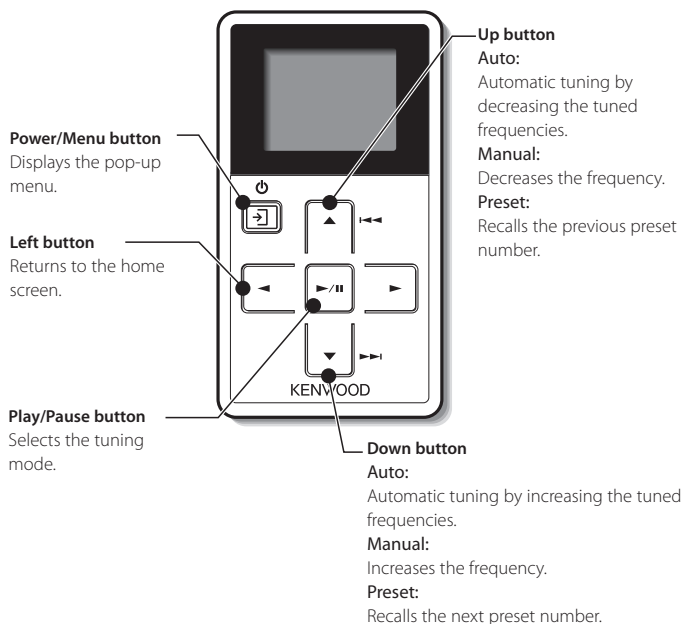
**MEMO** • The headphones also play the role of an antenna. Always connect them when receiving FM broadcasting.

## Display for FM reception

The FM radio display shows various information.



## Operations available during FM reception



## Selecting the tuning mode

FM stations can be turned either in auto tuning mode, with which the user can find a station automatically, or manual tuning mode, which the user varies the tuned frequency manually to find a station. Tuning by preset number is also possible provided that FM stations are stored in the preset memory in advance.

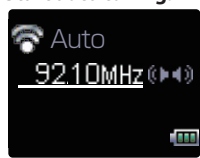
- Select the tuning mode.**


Each press of the button switches the tuning mode in order of "Auto" → "Manual" → "Preset".

## Tuning a FM station

### Auto tuning

Tunable FM stations can be searched automatically.

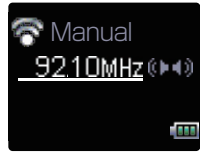
- Start auto tuning.**


Confirm that "Auto" is displayed.

▲ : Auto tuning by decreasing frequencies.  
▼ : Auto tuning by increasing frequencies.

### Manual tuning

FM stations can be searched manually.

- Start manual tuning.**


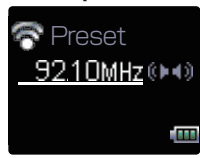
Confirm that "Manual" is displayed.

▲ : Decreases frequencies.  
▼ : Increases the frequency.

Pressing and holding the Up or Down button varies the tuned frequency continuously.

### Preset tuning

FM stations can be preset and recalled later.

- Select a preset number.**


Confirm that "Preset" is displayed.

▲ : Recalls the previous preset number.  
▼ : Recalls the next preset number.

**MEMO** • For the method of presetting stations, refer to pages 21 and 22 of the PDF manual.

## Free Manuals Download Website

<http://myh66.com>

<http://usermanuals.us>

<http://www.somanuals.com>

<http://www.4manuals.cc>

<http://www.manual-lib.com>

<http://www.404manual.com>

<http://www.luxmanual.com>

<http://aubethermostatmanual.com>

Golf course search by state

<http://golfingnear.com>

Email search by domain

<http://emailbydomain.com>

Auto manuals search

<http://auto.somanuals.com>

TV manuals search

<http://tv.somanuals.com>