

RTM-8000 GSM/GPRS Compact Flash Card



Owner's Manual

Copyright Statement

Copyright 2002 by Audiovox Communications Corp. All rights reserved. No part of this publication may be reproduced, transmitted, transcribed, stored in a retrieval system or translated into any language or computer language, in any form or by any means, electronic, mechanical, magnetic, optical, chemical, manual or otherwise, without the prior written permission of Audiovox Communications Corp..

Disclaimer

Audiovox Communications Corp. makes no representations or warranties, either expressed or implied, with respect to the contents hereof and specifically disclaims any warranties, merchantability or fitness for any particular purpose. Further, Audiovox Communications Corp. reserves the right to revise this publication and to make changes from time to time in the contents hereof without obligation of Audiovox Communications Corp. to notify any person of such revision or changes.

ALL INFORMATION IS PROVIDED BY AUDIOVOX COMMUNICATIONS CORP. ON AN "AS IS" BASIS ONLY. THIS COMPANY PROVIDES NO REPRESENTATIONS AND WARRANTIES, EXPRESS OR IMPLIED, INCLUDING THE IMPLIED WARRANTIES OF FITNESS FOR A PARTICULAR PURPOSE, MERCHANTABILITY AND NONINFRINGEMENT.

Important Safety Precautions

When using this product, the safety precautions below must be taken against possible legal issues and damages.



SAFETY IN AIRCRAFT

The interference would be caused by this product to an aircraft's navigation system and its network. In most countries, using this product on board an airplane is against the law.



SAFETY FOR ENVIRONMENTS

Do not use this product in gas stations. Also the use of this product is prohibited in fuel storehouse, chemical plants and locations containing explosives.



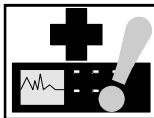
SAFETY ON THE ROAD

Vehicle drivers in motion are not permitted to use telephony services with the handheld device, except in the case of emergency. In some countries, using hand-free devices as an alternative is allowed.



SAFETY ABOUT RADIATION

This product should be operated in the suggested normal condition only to ensure the radiative performance and safety of the interference. When using the product, keep a distance of 5 mm from your body to eliminate possible electromagnetic effects.



SAFETY FOR MEDICAL EQUIPMENT

This product may cause malfunctions of medical equipment. In most hospital or medical centers, the use of this product is forbidden.

Attention



Handle the product with care. Do not drop, bend or apply strong forces to the product. Otherwise, unrecoverable damages will occur in its internal components.



There are no user serviceable parts inside this product. If this product appears to be broken, call a qualified service personnel or send this product to your original dealer. Do not attempt to disassemble or repair this product as it may result in electric shock or unrecoverable damage to the product itself.



Keep this product out of reach of small children.



Remove this product from your handheld device when not in use. Store this product in its protective case in a cool dry place.



The antenna of this product is non-removable. Do not try to detach the antenna from the product.



Avoid touching the antenna while in use, otherwise it may cause adverse effect to signal reception.



This product does not provide water proof feature. Avoid using this product in the rain or place the product near a cup or glass filled with water or other liquid.

Tips When Using

- Avoid using the product near metal structures (for example, large metal furniture or steel frames of a building). The transmission and reception of signal can be effected by these objects.
- Avoid using the product near strong electromagnetic sources, such as microwave ovens, sound speakers, TV and radio.
- Avoid using the product right after dramatic change of temperature.
- Make sure that the signal strength is in good condition before sending or receiving important data.
- This product runs on the power of your handheld device or portable PC. Check the power regularly. If the power is low, the transmission or reception will become unstable.
- Avoid transmitting a large file at a time. Try splitting it into several smaller files and send them separately.

Exposure to Radio Frequency Radiation

The radiated output power of this internal wireless radio is far below the FCC radio frequency exposure limits. Nevertheless, the wireless radio shall be used in such a manner that the radio is 2.5 cm or further from the human body.

The internal wireless radio operates within guidelines found in radio frequency safety standards and recommendations, which reflect the consensus of the scientific community.

Audiovox Communications Corp. therefore believes the internal wireless radio is safe for use by consumers. The level of energy emitted is far less than the electromagnetic energy emitted by wireless devices such as mobile phones. However, the use of wireless radios may be restricted in some situations or environments, such as aboard airplanes. If you are unsure of restrictions, you are encouraged to ask for authorization before turning on the wireless radio.

<Blank Page>



Table of Contents

Overview	Welcome	2
	Package Contents	3
	Appearance	4
	The RTM-8000	4
	The status indicator	5
	The remote controller	5
Installing and Configuring the RTM-8000	System Requirements	7
	Hardware & software requirements	7
	Network requirements	7
	Installing the RTM-8000	7
	Inserting the SIM card	7
	Install the RTM-8000 to Pocket PC	9
	Installing the RTM-8000 on a PC	18
	Installing RTM-8000 driver	18
	Installing driver for Windows 98 SE/Me	18
	Installing driver for Windows 2000	22
	Installing driver for Windows XP	26
	Configuring the settings of the RTM-8000 ...	31
Using the RTM- 8000	Using Wireless Data Connection on Pocket PC	34
	Using Wireless Data Connection on PC	38
	Dialer (For Pocket PC Only)	39
	Overview	39
	Features	39
	Installing Dialer	40
	Getting to know Dialer	40



Starting Dialer	40
Exit	43
Dialer Screen	44
Icons on the Status Display	44
Command Bar	45
Mode Buttons	45
Show/hide Tool Bar Button	45
Volume Adjustment Slider	46
Send Key	46
Cancel Key	46
Using Dialer	47
Making a call	47
Redialing the last dialed call	48
Answering a call	49
Missed call message	50
Receiving text messages	50
Listening to voicemail	51
Options during a call	52
Call waiting	52
Making a new call	52
Call swapping	53
Conference call	54
Private call	54
Holding/Unholding a call	55
Disconnecting a call	55
Phonebook	56
Adding a new Phonebook entry	56
Specifying your own number	57
Specifying the emergency number	57
Viewing Phonebook entries	58
Viewing details of a Phonebook entry	58
Viewing call records	58
Making a call from Phonebook	59
Editing a Phonebook entry	59
Deleting a Phonebook entry	59
Searching for a Phonebook entry	59
Adding/editing/deleting a Phonebook category	60
Copying/moving a Phonebook entry to another	



category	62
Duplicating a Phonebook entry	63
Message	64
Writing and sending a new message	64
Reading a message	66
Searching for a message	67
Replying to a message	68
Forwarding a message	69
Re-sending a message	70
Adding/renaming/deleting a message folder ..	71
Services	73
Call Service	73
General	74
Call divert	74
Call waiting	75
Call barring	76
Send unstructured supplementary service data	77
Network Service	78
Security Service	79
Changing access codes	80
SMS Service	81
Settings	83
General Settings	83
Choosing a skin (background)	84
Adjust power setting	84
Ringer Settings	85
Button Settings	86
Display Rules	88
Establishing a display rule	88
Changing the priority of a display rule	89
Editing a display rule	89
Deleting a display rule	89
Reset to default settings	90
Data Connection	91
Establishing GPRS Data Connection	91
Returning to voice services from GPRS data connection	95



Information	96
Card information	96
Online Help	96
About Dialer	96

Troubleshooting

Installation of the RTM-8000 is unsuccessful	98
Can not make or receive calls	98
Can not establish GPRS connection	98
GPRS connection is slow and unstable	99
Cannot return to voice services from GPRS data connection	99
Can not use certain call functions	99
There is noise during a call	99

1

Overview





Welcome

Congratulations on your purchase of the RTM-8000, GSM/GPRS Compact Flash card!

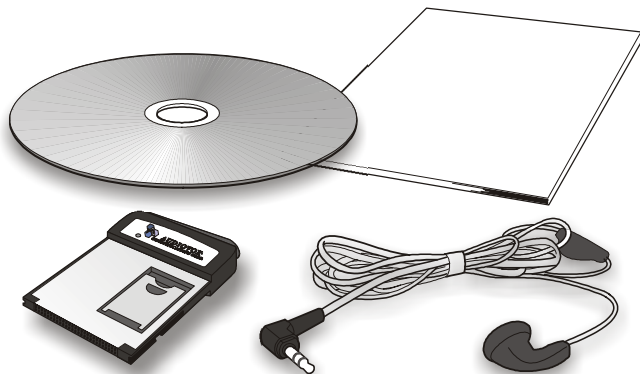
With this card, you can instantly turn your Pocket PC or PC into a wireless communication device so you can perform voice/data communication anytime and anywhere. You can not only enjoy high quality voice communication but rapid and stable GPRS data connection. You can finally get rid of the tiny little screen of your mobile phone and access various on-line information comfortably.

This manual will help you to better understand your RTM-8000 GSM/GPRS Compact Flash card as well as familiarize yourself quickly with how to use it. Please follow us step-by-step and get the most out of your card.



Package Contents

Check the contents of the package. The following items should be included. If there is any item damaged or missing, please contact your dealer immediately.

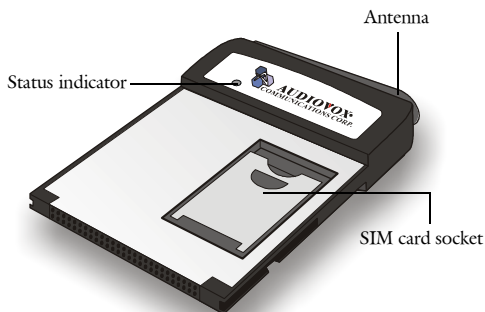


Description	Quantity
The GSM/GPRS Compact Flash Card	1
Earphone (with remote controller)	1
Software CD-ROM	1
This Owner's Manual	1

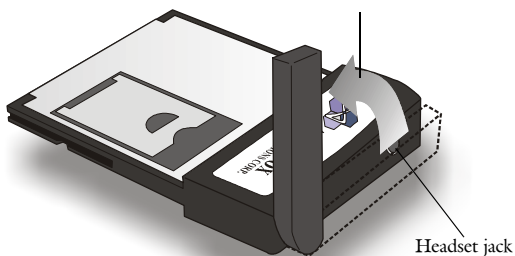


Appearance

The RTM-8000



Move the antenna upward while in use.



Note: The headset can be plugged into the headset jack for making a call or answering incoming calls.
Do not remove the antenna from the RTM-8000.



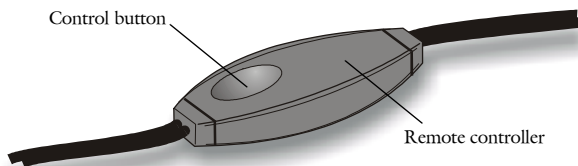
The status indicator

The working status of the RTM-8000 is shown by the status indicator. Please refer to the table below for the blinking patterns of the indicator and the status they represent:

Color	Pattern	Status
Amber	Blink every second	No service.
Amber	Blink slowly	GSM network connected.
Amber	Blink fast	Searching for network.
Green	Blink slowly	GSM/GPRS connected. Voice/data call in progress.
Green	Blink fast	There is an incoming call.

The remote controller

A remote controller is attached to the headset cable for easy and convenient control over certain functions.



Please refer to the table below for use:

When...	Press the control button...	To...
There is an incoming call	Once	Answer the call.
There is an incoming call	Two times in a row	Reject the call.
You are on a call	Two times in a row	End the call.
You are on a call	Press and hold	Cycle headset volume from soft to loud and vice versa. Release the button when you find the desired volume level.

2

Installing and Configuring the RTM-8000





System Requirements

Check your hardware and software and see if they satisfy the requirements below. If you are not sure, please consult your dealer or operator.

Hardware & software requirements

- A valid SIM card.
- A Type I Compact Flash Card slot or a PCMCIA (PC Card) slot and a PCMCIA-to-Compact Flash adapter card (Optional)

For Pocket PC:

- Operating system: Pocket PC 2000 or 2002
- ActiveSync must be installed on the host system

For PC:

- IBM compatible, 486DX4-100Mhz PC or above
- System memory: At least 64MB
- Operating system: Windows 98 SE/Me/2000/XP

Network requirements

Some features require support from your network operator, and may require additional subscription.

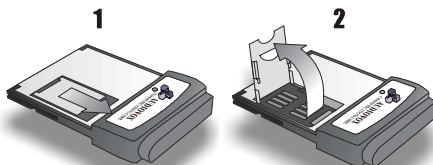
Installing the RTM-8000

Inserting the SIM card

Follow the steps below to insert the SIM card into the SIM card socket of the RTM-8000.

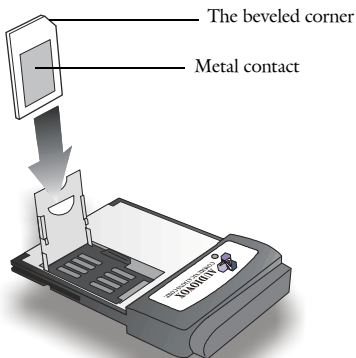
1

Open the SIM card socket flip as illustrated.

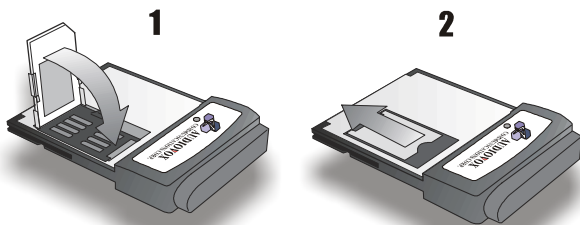


**2**

Insert the SIM card into the SIM card socket flip. Pay attention to the direction of the SIM card and the metal contact when you insert.

**3**

Close the SIM card socket flip and slide it into place.

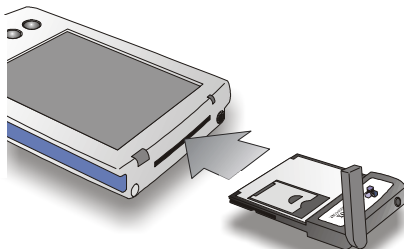




Install the RTM-8000 to Pocket PC

1

Refer to the illustration below to insert the RTM-8000 into Pocket PC.



Note: The way to insert the RTM-8000 may be different from Pocket PC to Pocket PC. Please refer to the documentation of your Pocket PC for details.

The configuration below is for reference only. Please consult your operator for detailed configuration parameters.

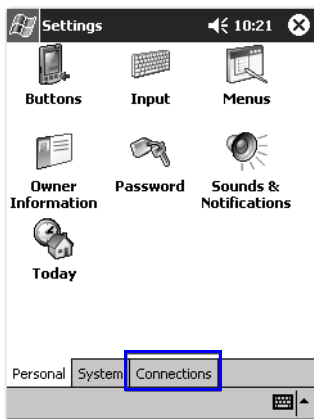
2

Tap *Start*, *Settings*.

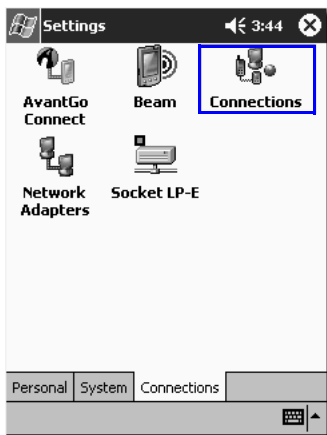


**3**

Tap the *Connections* tab.

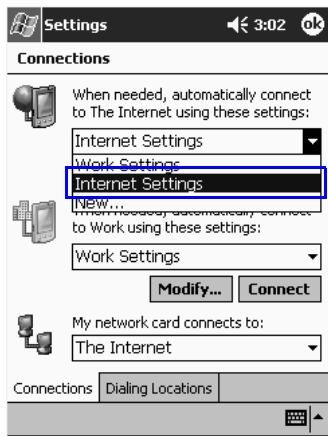
**4**

Tap the *Connections* icon.

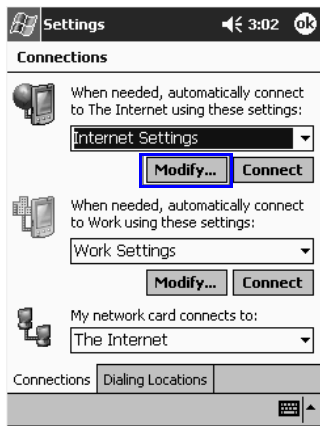


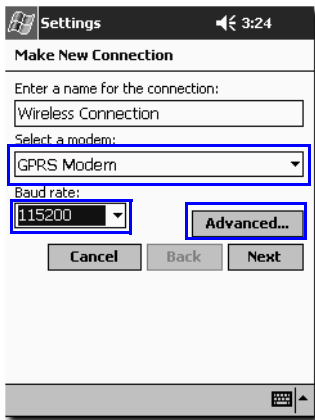
**5**

Tap to select *Internet Settings*.

**6**

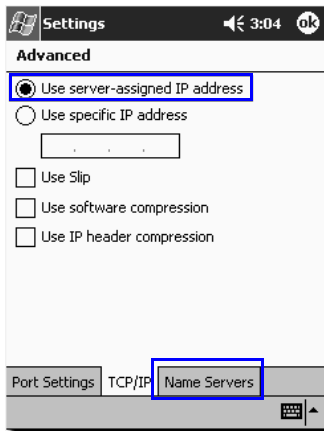
Tap *Modify*.



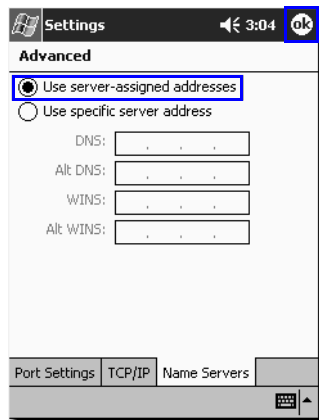
**7**Tap *New...***8**Enter the name of the connection and select *GPRS Modem*. Set baud rate to *115200*. Tap *Advanced...* to continue.

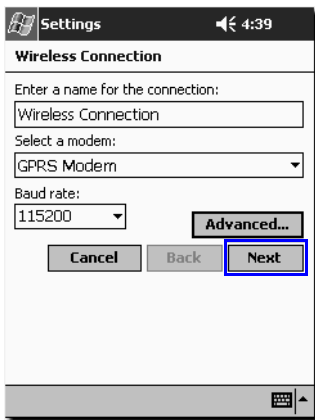
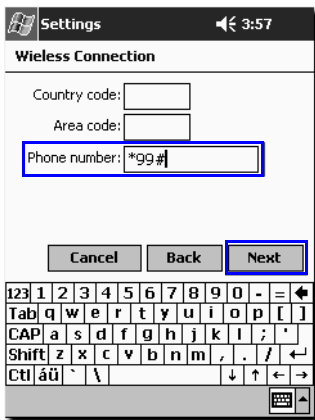
**9**

Tap *TCP/IP* tab. Make sure that *Use server-assigned IP addresses* is selected. Uncheck *Use software compression* and *Use IP header compression* checkboxes. Tap *Name Servers* tab to continue.

**10**

Make sure that *Use server-assigned addresses* is selected and tap *ok*.



**11**Tap *Next*.**12**Enter **99#* in the *Phone number* field and leave the *Country code* and *Area code* fields empty. Tap *Next*.

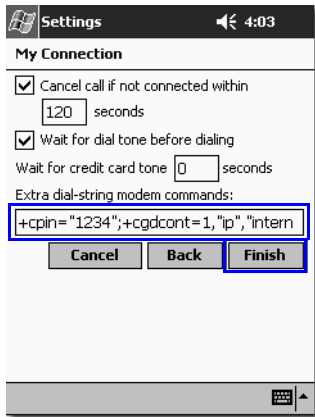
**13**

Enter `+cpin="****";+cgdcont=1,"ip","APN"` (where **** is your PIN code, and APN is the Access Point Name of your operator) in the *Extra dial-string modem commands*: field. If the PIN code of your SIM card is not enabled, just enter `+cgdcont=1,"ip","APN"`. Tap *Finish*.

For example,

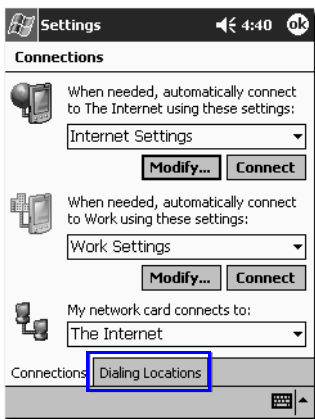
If your PIN code is 1234, and the APN of your operator is "internet", enter the following:

```
+cpin="1234";+cgdcont=1,"ip","internet"
```

**14**

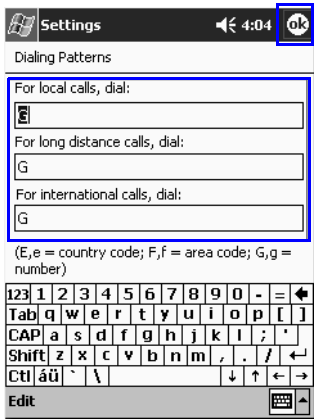
Tap *ok*.



**15**Tap *Dialing Locations* tab.**16**Tap *Dialing Patterns...*

**17**

Enter **G** in all fields and tap **ok**.

**18**

Tap **ok**. The configuration is complete.





Installing the RTM-8000 on a PC

To install the RTM-8000 on a PC:

- According to the operating system of your PC, install appropriate driver and then the RTM-8000 Compact Flash card.
- Configure the settings of the RTM-8000 Compact Flash card driver.

Note: Be sure to install RTM-8000 driver before inserting the card into your PC.

Installing RTM-8000 driver

Installing driver for Windows 98 SE/Me

1

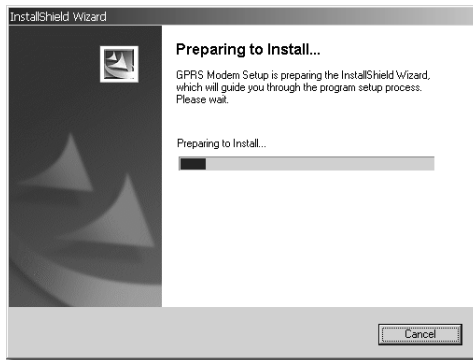
Insert the CD-ROM into your CD-ROM drive and double-click the *setup.exe* icon in the *WIN98SE&ME* folder.



setup.exe

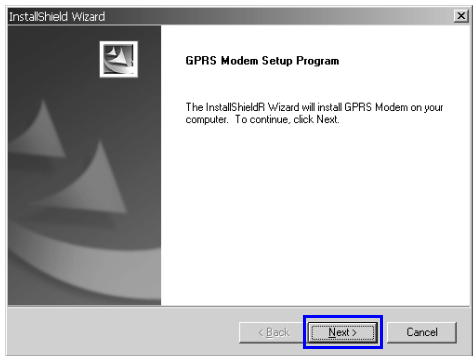
2

Driver installation wizard will appear on the screen.

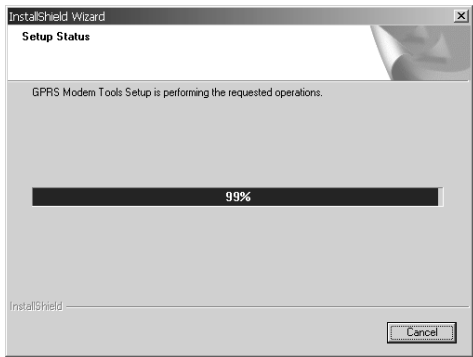


**3**

Click *Next*.

**4**

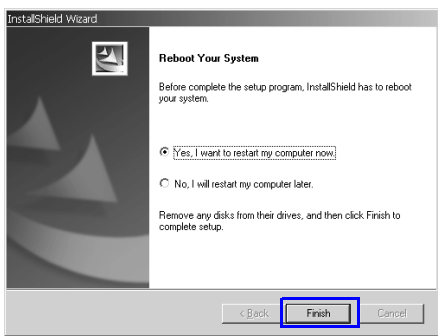
The installation wizard will start copying files to your system.





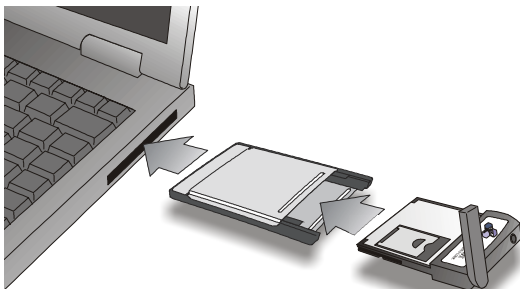
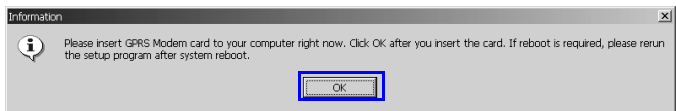
5

The installation wizard will ask you to restart your computer. Close all running programs and click *Finish* to restart your computer.



6

The following message will appear on the screen after restart. Insert the RTM-8000 into your PC and click *OK*.



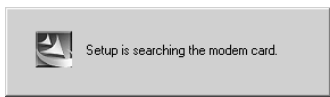
Note: The way to insert the CompactFlash and PCMCIA card may be different from PC to PC. Please refer to the documentation of your PC for details.

**7**

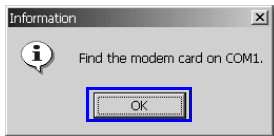
The RTM-8000 will be detected automatically as a GPRS Modem.

**8**

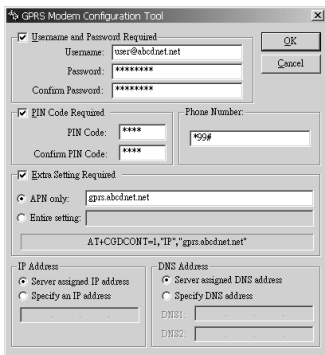
The installation wizard will continue with the rest of the installation process automatically.

**9**

Click *OK*.

**10**

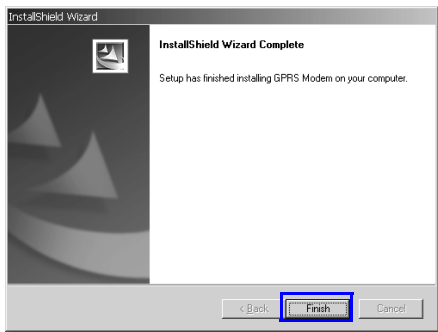
The *GPRS Modem Configuration Tool* window will appear. Follow the description of “Configuring the settings of the RTM-8000” on page 31 to configure the settings of driver.





11

Click *Finish*. The installation of the RTM-8000 is complete.



Installing driver for Windows 2000

1

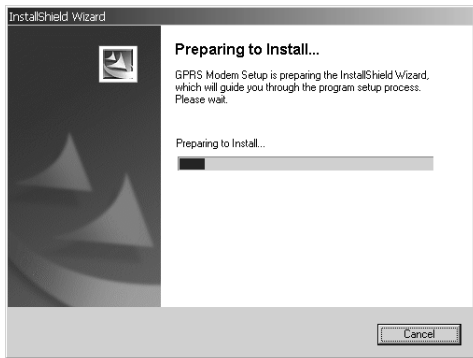
Insert the CD-ROM into your CD-ROM drive and double-click the *setup.exe* icon in the *WIN2000&XP* folder.



setup.exe

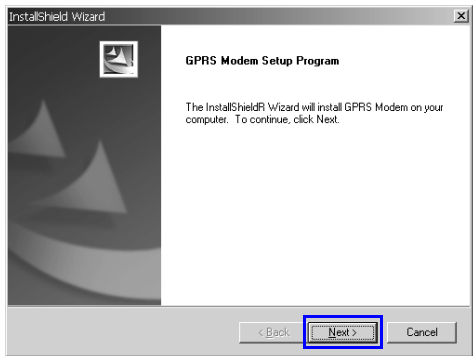
2

Driver installation wizard will appear on the screen.

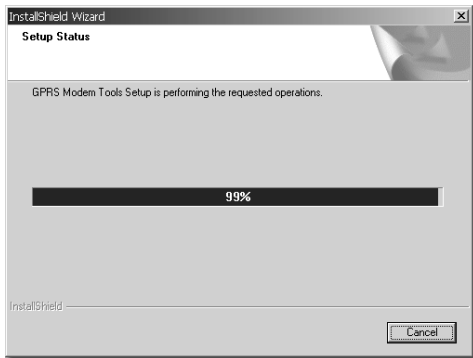


**3**

Click *Next*.

**4**

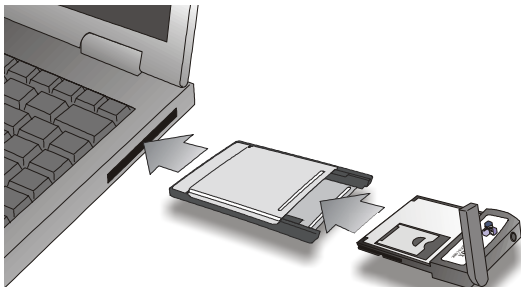
The installation wizard will start copying files to your system.





5

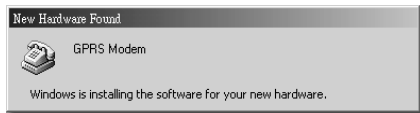
The following message will appear on the screen. Insert the RTM-8000 into your PC and click **OK**.



Note: The way to insert the CompactFlash and PCMCIA card may be different from PC to PC. Please refer to the documentation of your PC for details.

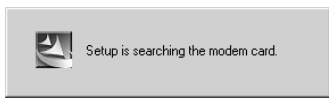
6

The RTM-8000 will be detected automatically.



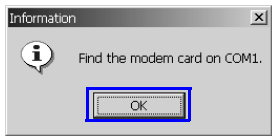
7

The installation wizard will continue with the rest of the installation process automatically.

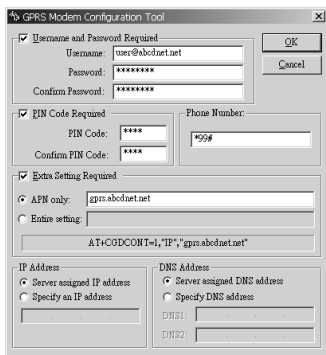


**8**

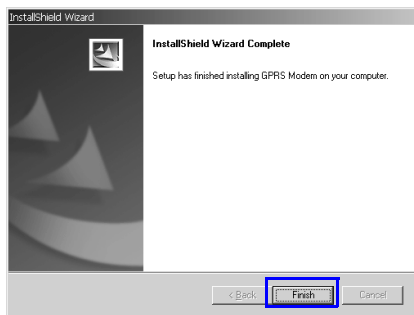
Click **OK**.

**9**

The *GPRS Modem Configuration Tool* window will appear. Follow the description of “Configuring the settings of the RTM-8000” on page 31 to configure the settings of driver.

**10**

Click **Finish**. The installation of the RTM-8000 is complete.





Installing driver for Windows XP

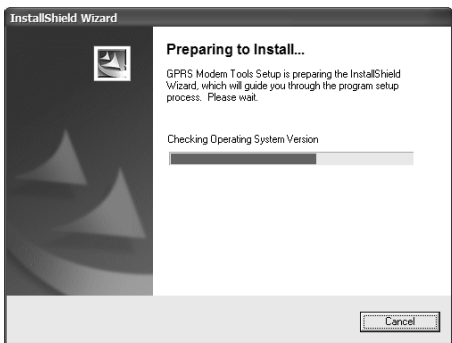
1

Insert the CD-ROM into your CD-ROM drive and double-click the *setup.exe* icon in the *WIN2000&XP* folder.



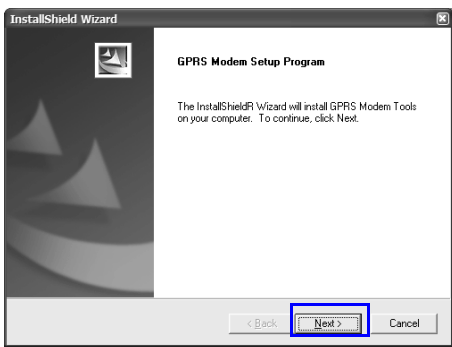
2

Driver installation wizard will appear on the screen.



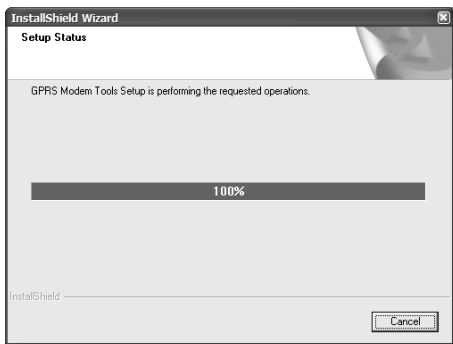
3

Click *Next*.

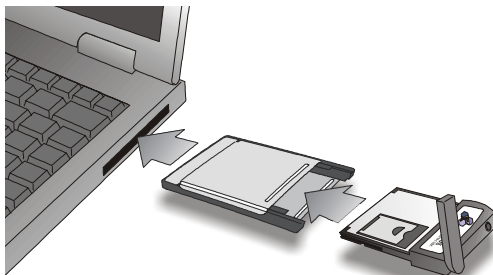
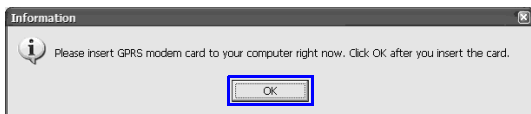


**4**

The installation wizard will start copying files to your system.

**5**

The following message will appear on the screen. Insert the RTM-8000 into your PC and click **OK**.



Note: The way to insert the CompactFlash and PCMCIA card may be different from PC to PC. Please refer to the documentation of your PC for details.



6

Found New Hardware Wizard will appear on the screen. Click [Next](#).



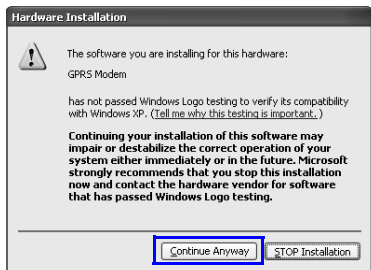
7

The computer will start detecting the RTM-8000.

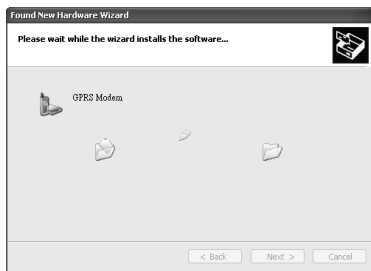


**8**

Click *Continue Anyway*.

**9**

The wizard will continue installing.

**10**

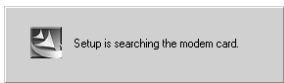
Click *Finish*.





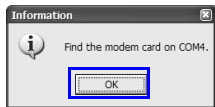
11

The computer will detect the RTM-8000 again.



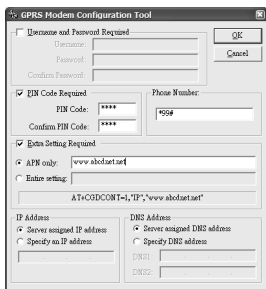
12

Click *OK*.



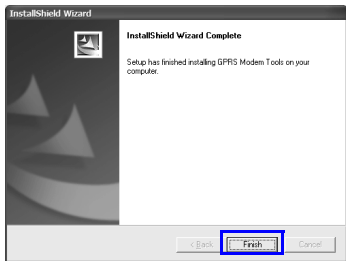
13

The *GPRS Modem Configuration Tool* window will appear. Follow the description of “Configuring the settings of the RTM-8000” on page 31 to configure the settings of driver.



14

Click *Finish*. The installation of driver is complete.





Configuring the settings of the RTM-8000

You can configure the settings of the RTM-8000 in the *GPRS Modem Configuration Tool* window during installation. If you need to change these settings afterwards, click *Start* on Windows Taskbar and select *GPRS Modem Tools*, *GPRS Modem Configuration* to open the GPRS Modem Configuration Tool window and make changes.

The section below describes each setting item in the window. For actual setting parameters, please consult your operator.

User Name and Password Required

If your operator requires you to enter your user name and password before connecting, check this checkbox. Enter your user name in the *Username* field, password in the *Password* field and password again in the *Confirm Password* field.

PIN Code Required

If the PIN code of your SIM card is activated, check this checkbox. Enter your PIN code in the *PIN Code* field and your PIN code again in the *Confirm PIN Code* field.



Phone Number

Enter the phone number to dial, for data connections (such as *99#) in this field. This is specified by your operator.

Extra Setting Required

If extra settings are required, you can enter the parameters here. These include:

APN Only: If only the APN address is required, enter that of your operator here.

Entire setting: If a complete setting string is required, enter the string here.

IP Address

If your operator requires you to enter the IP address, check the *Specify an IP Address* checkbox and enter the IP address here. Otherwise, check the *Server Assigned IP Address* checkbox.

DNS Address

If your operator requires you to enter the DNS address, check the *Specify a DNS Address* checkbox and enter the DNS address here. Otherwise, check the *Server Assigned DNS Address* checkbox.

3

Using the RTM-8000





Using Wireless Data Connection on Pocket PC

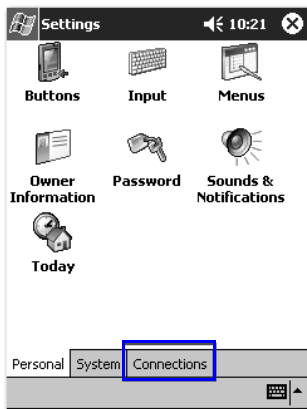
1

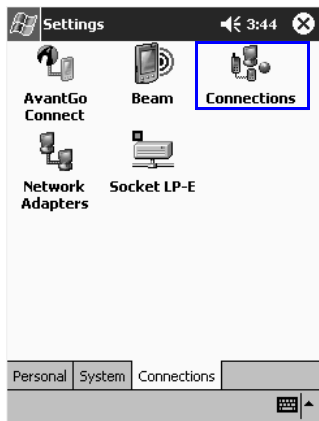
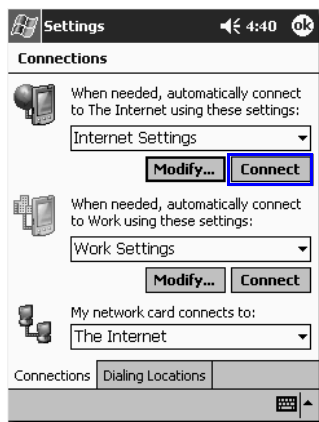
Tap *Start, Settings*.



2

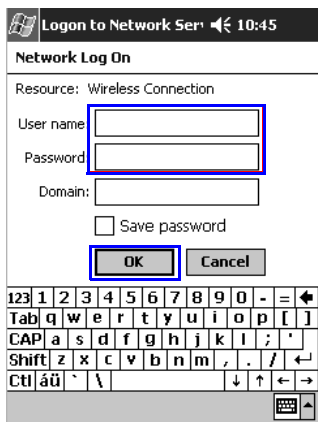
Tap *Connections* tab.



**3**Tap the *Connections* icon.**4**Tap *Connect*.

**5**

If used, enter the user name and password supplied by your operator. Tap **OK**.

**6**

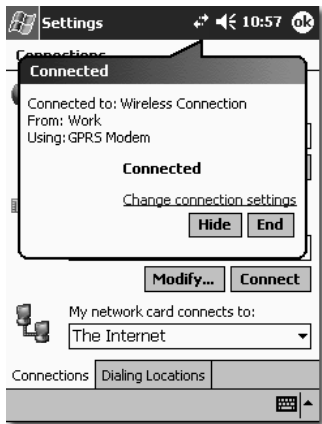
The *Connecting...* dialogue box pops up.





7

If connection is established successfully, *Connected* dialogue box will appear. Now you are ready to surf the Internet using Pocket Internet Explorer or other applications.



Note: To disconnect from the Internet again, tap the two-arrow symbol on the top bar of your PDA screen. When the dialog box appears, tap *End*.



Using Wireless Data Connection on PC

1

The RTM-8000 driver creates a *GPRS Modem Connection* icon on your desktop. Double-click the icon and the connection dialogue box will appear on the screen.



You can also open such dialogue box by clicking the *Start* button on Windows Taskbar and selecting *Programs, GPRS Modem Tools, GPRS Modem Connection*.

Click *Connect* or *Dial*.

2

The *Connecting...* dialogue box will pop up on the screen.

3

If connection is established successfully, *Connected* dialogue box will appear. Now you are ready to use the connection with your favorite applications.



Dialer (For Pocket PC Only)

Overview

Dialer is a Pocket PC application program that is designed to work with the RTM-8000. It provides an easy and intuitive interface to change your Pocket PC into a GSM/GPRS mobile phone.

Features

- Integrates the data in your Contact and Phonebook. You can make phone calls from your entries directly.
- Provides capability that allows you to send long text messages.
- Easy management of your Phonebook and Messages.
- Supports subscription-dependent call services like call barring, call divert and call waiting.
- Wide range of ring tone selection. You can select any .wav file as the ring tone or message alert tone.
- The skin (background) can be changed freely according to your preference.
- The hardware buttons on your Pocket PC can be assigned to initiate frequently performed actions.

Note: When changing from the Dialer application to making a data/internet connection, the phone functions are temporarily disabled. This means that while using data/internet, voice calls can not be made or received. Please also see “Data Connection” on page 91.



Installing Dialer

Before installing Dialer:

- Backup the data on your Pocket PC.
- Make sure your Pocket PC is connected to your PC and RTM-8000 is inserted.

Insert the software CD-ROM into your CD-ROM drive and double-click the *Dialer10EN.exe* icon.



The installer starts automatically. Follow the instructions on the screen to proceed.

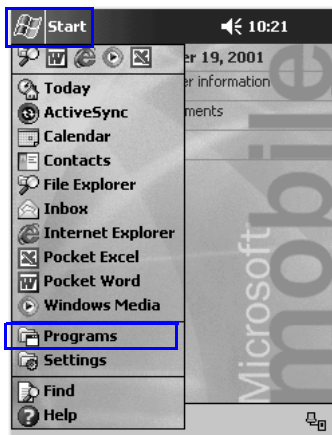
Getting to know Dialer

Starting Dialer

To start Dialer:

1

Tap *Start, Programs*.



**2**Tap **Dialer**.**3**If the PIN code of your SIM card is enabled, you will be prompted to enter it. Enter your PIN code and tap **OK**.

Note: If you entered wrong PIN code three times in a row, the SIM card will be blocked. In order to unblock the SIM card, you have to enter the PUK-code of your SIM card. Contact your operator to unblock it.

**4**

Dialer main screen will appear. It will start searching for the network automatically.

**5**

If network is acquired, the operator name will appear on Dialer. If no network is available, *Off Line* will appear instead.





Note: If no SIM card is installed on RTM-8000, or the SIM card is invalid, you can only tap [SOS](#) to make emergency calls.



Exit

To exit Dialer, tap [Edit](#) on the Command Bar and select [Exit](#).










Dialer Screen



Icons on the Status Display

Icon	Meaning	Description
	Signal strength	Indicates the strength of network signal. The more bars displayed, the stronger the signal.
	Battery level	Indicates the level of Pocket PC battery. The more bars displayed, the more battery power available. The bars scroll if the Pocket PC is using AC power.



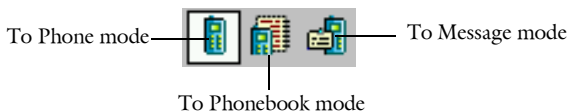
	New voicemail	This icon indicates that you have a new voicemail.
	New text message	This icon appears when a new text message is received.
	Mailbox full	This icon indicates that your mailbox is full and you need to delete some messages.
	Roaming	This icon indicates that you are roaming under another GSM network.
	Silent	This icon appears when the ring volume is turned off (silent).
	GPRS connection	This icon indicates that GPRS connection is established.
	Call in progress	This icon flashes when there is an incoming call. If there is a call in progress, this icon remains steady.

Command Bar

The Command Bar contains menus for using the functions of Dialer.

Mode Buttons

The Mode Buttons on the Command Bar allow you to switch among different operation modes easily. Tap a button to switch to the corresponding mode.



Show/hide Tool Bar Button

In Phone Book and Message modes, tap this button to show or hide the Tool Bar.



Volume Adjustment Slider

Drag the slider to adjust headset volume. Dragging it to the right increases volume and left decreases volume.

Send Key

- When there is an incoming call, tap this key to answer the call.
- After phone number is entered using alphanumeric keys, tap this key to dial.
- Tap and hold this key to redial the last dialed number.

Cancel Key

- When there is an incoming call, tap this key to reject the call.
- When you are dialing phone numbers, you can tap this key to cancel dialing.



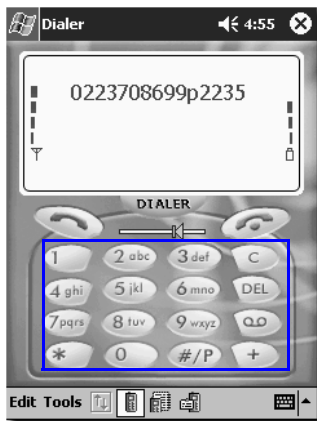
Using Dialer

Making a call

To make a call:

1


Tap alphanumeric keys to enter phone number.

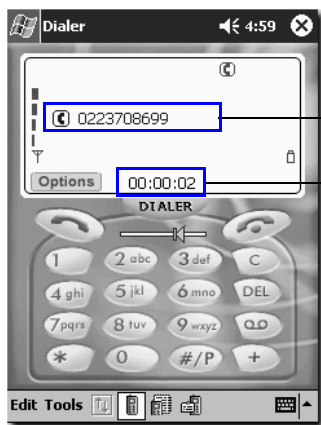


Note:

- To clear a wrong number, tap **C** key. Tapping **DEL** key clears a whole line.
- To insert pauses between numbers, tap **P** on **#/P** key.
- To make an international call, tap and hold **+** key until "+" (international call prefix) appears, and then enter the country code, area code (omit the zero) and phone number.

**2**


Tap  key to dial. When the call is connected, the phone number and call time counter will appear on the status display.



Phone number


Call time counter

3

Tap  key to end the call.

You can also make a call from your Phone Book. For details, please refer to “Making a call from Phonebook” on page 59.


Redialing the last dialed call

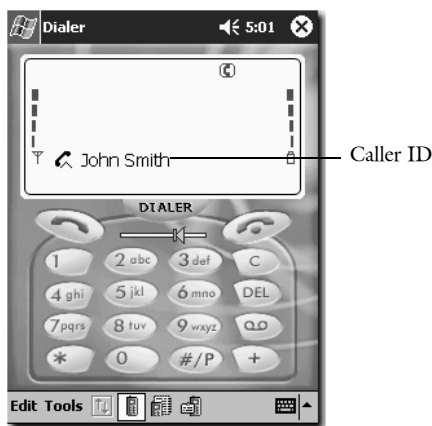
Tap and hold  key. The last dialed number will be dialed automatically.





Answering a call

1


When an incoming call is received, ring tone is generated and the icon  flashes. Meanwhile, if the caller ID is available and can be found in your Phonebook, the caller's name will appear on the status display. Otherwise, only "Unknown number" will appear.



2

Tap  to answer the call. Otherwise, tap  to reject.

3


To end the call, tap  key.



Missed call message

If a call (or multiple calls) is missed, the missed call message containing the last missed caller's name ("Unknown number" is shown when the caller's name is unknown) will appear on the status display.




Tap  key to clear the message.

You can also view the details of missed calls or reply to them. See "Viewing call records" on page 58.

Receiving text messages


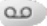
Note: Related message settings must be configured before you can use the text message and voicemail message functions. For details, please refer to "SMS Service" on page 81.

When a text message is received, an alert sound is generated and the icon  appears on the status display. Tap the icon to open your mailbox and view the received message(s). The new message(s) is highlighted and you can double-tap on it to view the contents.

For more information about messages, see "Message" on page 64.



Listening to voicemail

When a voicemail message is received, the icon  appears on the status display. Tap  key to connect to your voicemail box and listen to the voicemail message.

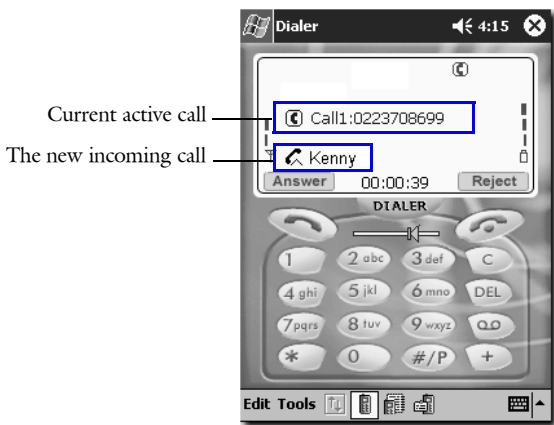


Options during a call

Note: To use the functions during a call, you need to subscribe them to your operator and enable them in Dialer. For details on how to enable them in Dialer, please see “Call Service” on page 73.


Call waiting

If another call is received when you are on a call, the call waiting message will appear. To answer the new incoming call, tap [Answer](#). Otherwise, tap [Reject](#).



The current call will be held automatically if the new call is answered.

Making a new call

During a call, you can make a new call by entering phone number and tapping  key. If the new call is connected, the current call will be held automatically.

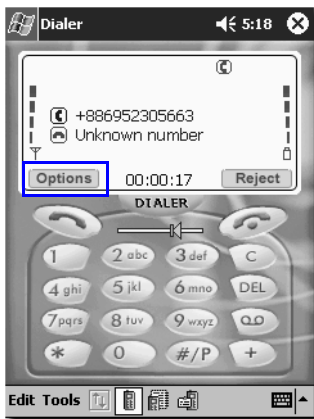


Call swapping

To swap two active calls:

1

Tap *Options*.



2

The *Call State* window appears. Tap *Swap*.





Conference call

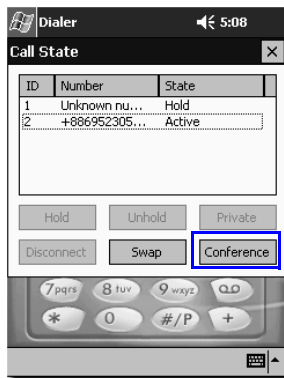
To establish a conference call in a multi-party call, tap *Conference* in the *Call State* window.



Private call

During a conference call, tap to select a calling party and tap *Private* in the *Call State* window. With this function, you can talk to the calling party you selected without being heard by the other calling parties.

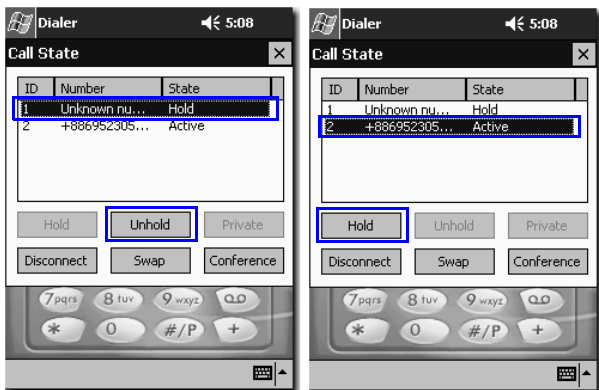
To return to the conference call, tap *Conference*.





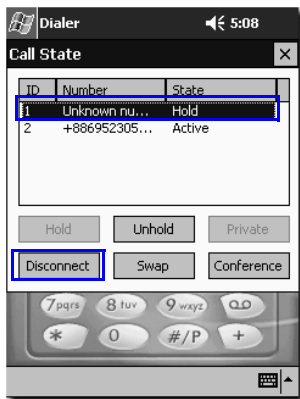
Holding/Unholding a call

To hold/unhold a call in a multi-party call, tap to select the call you want to hold/unhold and tap *Hold* or *Unhold*.



Disconnecting a call


To disconnect a call in a multi-party call, tap the call you want to disconnect in the *Call State* window and tap *Disconnect*.





Phonebook



Dialer's Phonebook integrates the Phonebook data on your SIM card and the Contact data in the Pocket PC. You can manage the data easily and make calls from them quickly.

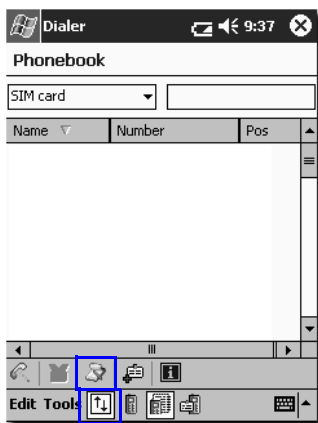
To enter Phonebook mode, tap the Phone Book mode button .



Adding a new Phonebook entry

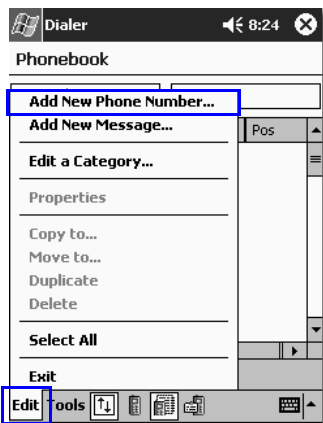
To add a new Phonebook entry:

1

In Phonebook mode, tap the Show/hide Tool Bar Button  and then the button  on the Tool Bar. Or, in any operation mode, tap *Edit* on the Command Bar and select *Add New Phone Number...*



Tap the Show/hide Tool bar button  and then the Add new number button  on the Tool Bar in Phonebook mode.



In any operation mode, tap *Edit* on the Command Bar and select *Add New Phone Number...*

**2**

The *Add New Phone Number* screen will appear. Enter name, number and select where this new entry will be saved in the *Memory* drop-down menu. Specify a location by tapping the arrows in the *Position* box.

Dialer 9:52 ok

Add New Phone Number

Name:

Number: -

Memory: SIM card

Position: 50

Cancel

123 1 2 3 4 5 6 7 8 9 0 - =

Tab q w e r t y u i o p []

CAP a s d f g h j k l ; ' "

Shift z x c v b n m , . / ←

Ctl | á ü ~ \ ↓ ↑ ← →

Specifying your own number

Select *Owner number* in the Memory drop-down menu and enter your own phone number.

Specifying the emergency number

Select *Emergency* in the Memory drop-down menu and enter the emergency number. The emergency number can be called even when SIM card is not inserted.

3

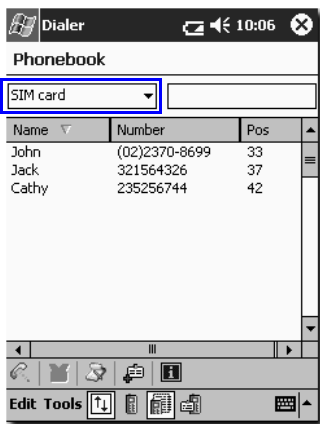
Tap *ok* and the entry will be saved to the designated memory.

Note: You can not add a new Contact record in Dialer. To do so, please use the Contact program in your Pocket PC.



Viewing Phonebook entries

In Phonebook mode, tap the drop-down menu to select a category, and the Phonebook entries under selected category will appear. For example, if *SIM card* is selected, all Phonebook data stored on the SIM card will appear.



Viewing details of a Phonebook entry

- Tap to select an entry and then tap the button on Tool Bar.
- Double-tap an entry.
- Tap to select an entry, then tap *Edit* on the Command Bar and select *Properties*.
- Tap and hold an entry and select *Properties...* in the submenu that appears.

Viewing call records

In Phonebook mode, tap the drop-down menu to select *Calls missed*, *Calls received* or *Calls dialed*. Corresponding call records will appear.



Making a call from Phonebook

In Phonebook mode, tap an entry (or a call record) and then tap button on the Tool Bar. Or, Tap and hold an entry and select *Dial* in the submenu that appears. Dialer will begin making the call automatically.

Editing a Phonebook entry

1

Refer to “Viewing details of a Phonebook entry” on page 58 to open the details of the Phonebook entry you want to edit.

2

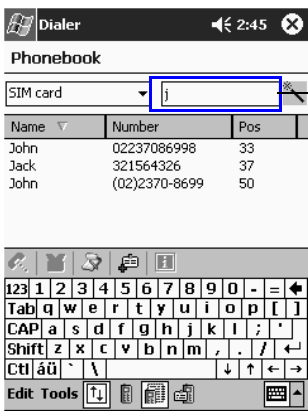
Edit the Phonebook entry. When you are done editing, tap *ok*.

Deleting a Phonebook entry

In Phonebook mode, tap to select the Phonebook entry you want to delete, then tap *Edit* on the Command Bar and select *Delete*. Or, tap and hold an entry and select *Delete* in the submenu that appears.

Searching for a Phonebook entry

Enter name (or starting characters of the name) in the *Search* field. The Phonebook entries starting with the characters you entered will appear.



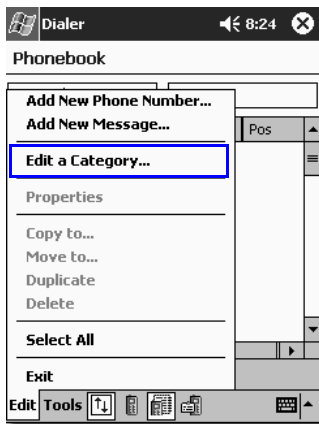
Enter here



Adding/editing/deleting a Phonebook category

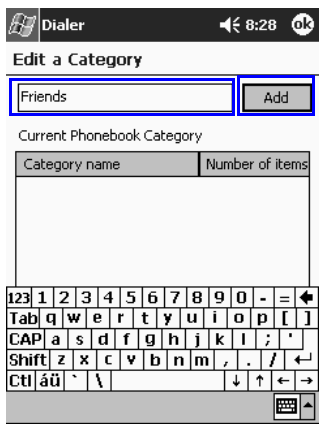
1

In Phonebook mode, tap *Edit* on the Command Bar and select *Edit a Category...*



2

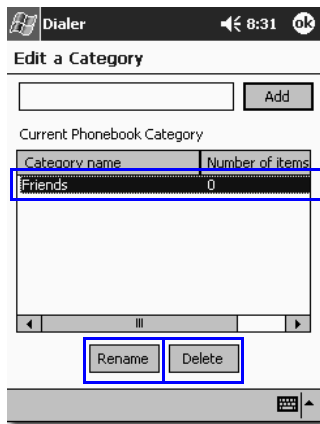
Enter the name of the new category and tap *Add*.





To rename an existing category, tap to select the category in the *Current Phonebook Category* list and tap *Rename*.

To delete a category, tap to select the category and tap *Delete*.





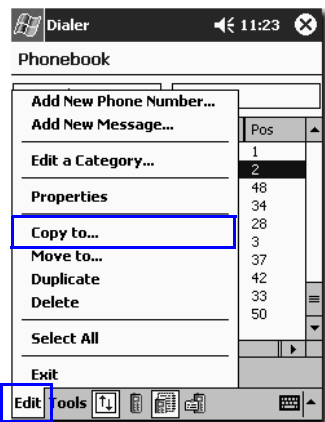
Copying/moving a Phonebook entry to another category

After you create a new Phonebook category, you can use this function to copy or move Phonebook entries to the new category.

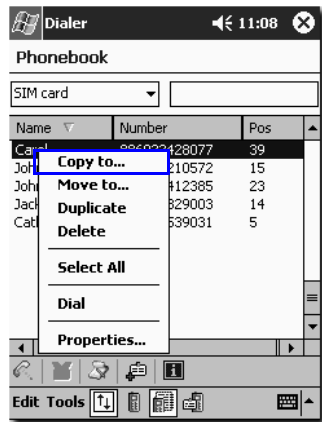
1

In Phonebook mode, tap to select a Phonebook entry (or tap and drag to select multiple entries), then tap *Edit* on the Command Bar and select *Copy to...*

Or, tap and hold on a Phonebook entry and select *Copy to...* in the sub-menu that appears.



In Phonebook mode, tap to select a Phonebook entry (or tap and drag to select multiple entries), then tap *Edit* on the Command Bar and select *Copy to...*



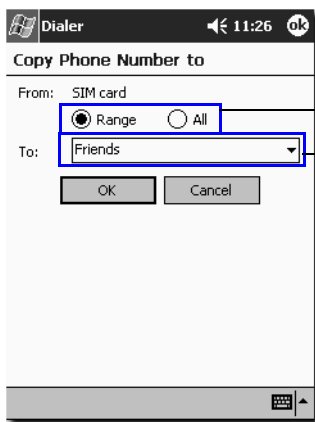
Tap and hold on a Phonebook entry and select *Copy to...* in the sub-menu that appears.



2

The "Copy Phone Number to" screen appears. If you want to copy selected entry (or entries), tap *Range*. Tap *All* to copy all entries.

Then, tap the "To:" drop-down menu to select the destination category. Tap *OK* to start copying.



Copy the selected Phonebook entries or all Phonebook entries.

Destination category

Follow similar steps to move Phonebook entries.


Duplicating a Phonebook entry

To duplicate a Phonebook entry:

- Tap a Phonebook entry and then tap *Edit* on the Command Bar and select *Duplicate*.
- Tap and hold a Phonebook entry and select *Duplicate* in the submenu that appears.




Message

You can read, write and send text messages in Message mode. Tap  button on the Tool Bar to enter Message mode.

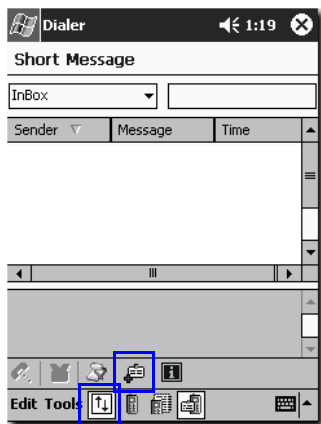
Note: Before you can use the Message functions, you need to set up related message settings first. For details, please refer to “SMS Service” on page 81.



Writing and sending a new message

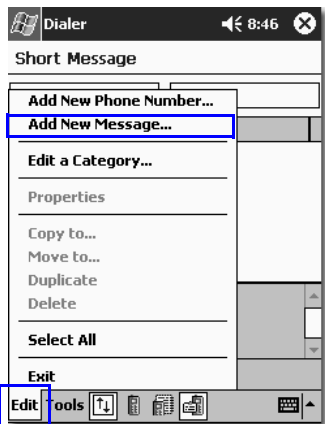
Tap the Show/hide Tool Bar Button  and then the *Add new message...* button  on the Tool Bar in Message mode.

1

Or, in any operation mode, tap *Edit* on the Command Bar and select *Add New Message...*



Tap the Show/hide Tool Bar Button  and then the *Add new message...* button  on the Tool Bar in Message mode.



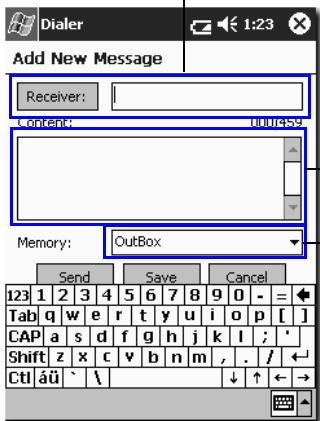
Or, in any operation mode, tap *Edit* on the Command Bar and select *Add New Message...*



2

Edit the message.

Enter receiver's number or tap the *Receiver* button to pick up a receiver or multiple receivers from Phonebook.



Enter the contents of the text message. The maximum length is 459 characters (including symbols and spaces).

If you want to save the message, tap to select a destination folder.


Tap *Send* to send the message immediately. If you want to save the message and send it later, tap *Save*.

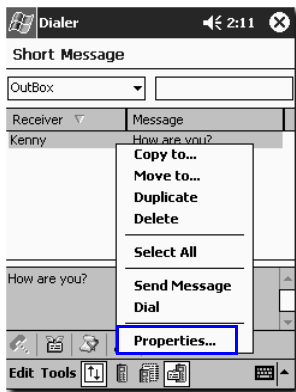
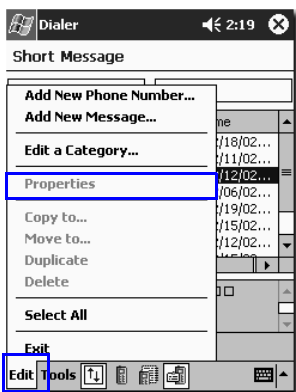
The sent messages will be saved in *Sent* folder automatically.



Reading a message

You can view the contents of a message by doing any of the following:

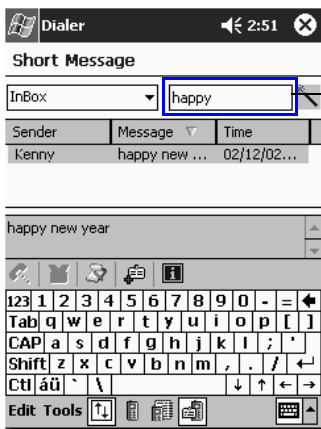
- In Message mode, tap to select a message, then tap *Edit* on the Command Bar and select *Properties*.
- Tap to select a message and then tap the  button on the Tool Bar.
- Tap and hold a message and select *Properties* in the submenu that appears.
- Double-tap a message.





Searching for a message

Enter the keyword in the *Search* field. The message(s) containing the keyword will appear.



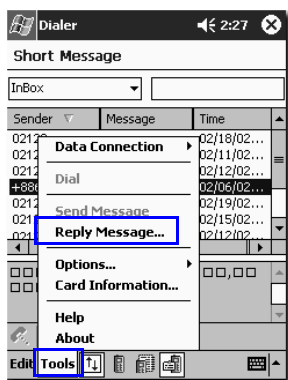
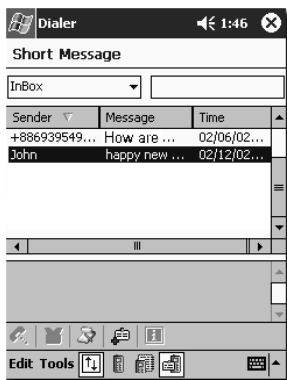
Enter here



Replying to a message

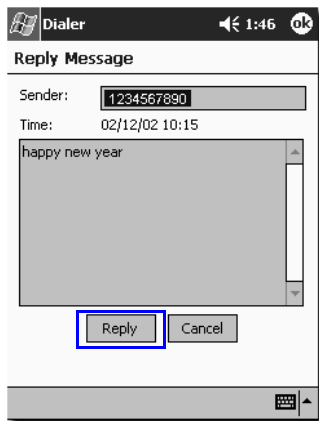
1

In Message mode, double-tap the message you want to reply. Or, tap to select the message you want to reply, then tap *Tools* on the Command Bar and select *Reply Message...*



2

Edit the reply message and tap *Reply*.

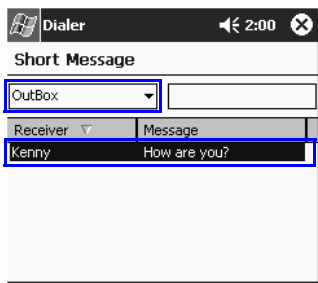




Forwarding a message

1

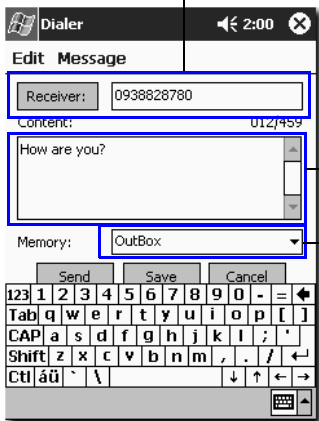
In Message mode, double-tap the message you want to forward in *OutBox* or *Draft* folder.



2

Edit the message.

Enter receiver's number or tap the *Receiver* button to pick up a receiver or multiple receivers from the Phonebook.



Enter the contents of the text message (optional). The maximum length is 459 characters (including symbols and spaces).

If you want to save the message, tap to select a destination folder.


3

Tap *Send* to send the message or *Save* to save the message and send later.

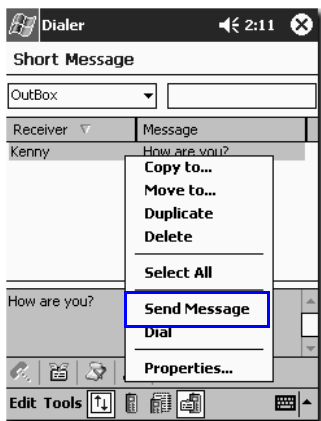
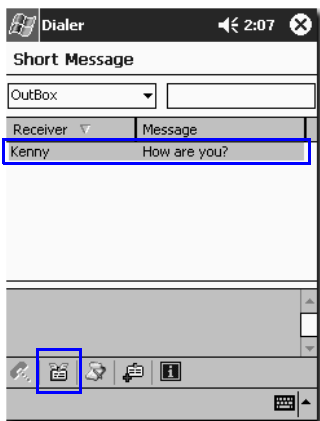


Re-sending a message

You can use this function to send a message again.

In Message mode, tap to select a message in *Outbox*, *Draft* or *Sent* folder and tap the  button on the Tool Bar.

Or, tap and hold a message in *Outbox*, *Draft* or *Sent* folder and select *Send message* in the submenu that appears.

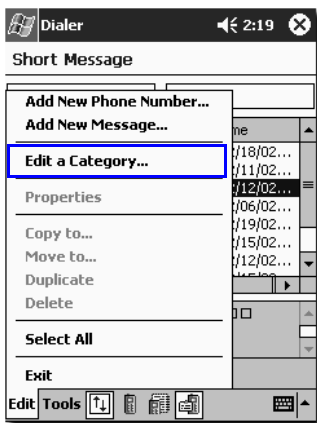




Adding/renaming/deleting a message folder

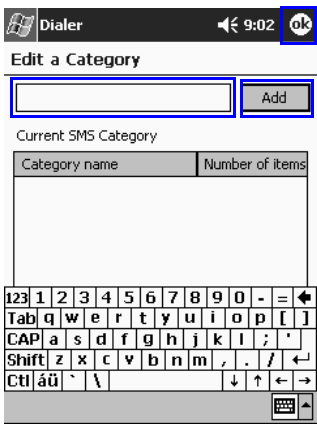
1

In Message mode, tap *Edit* on the Command Bar and select *Edit a Category...*



2

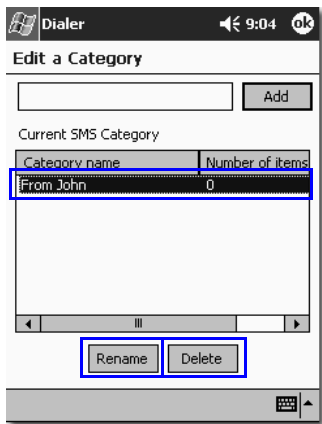
To add a new folder, enter the name of the new folder and tap *Add, ok*.





To rename an existing folder, tap to select the folder in the *Current SMS Category* list and tap *Rename*.

To delete a folder, tap to select the folder and tap *Delete*.





Services

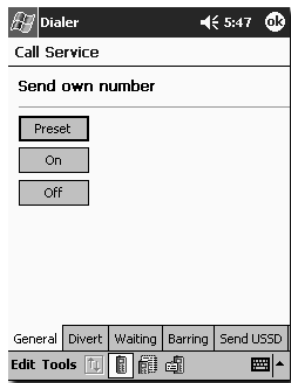
You can set up and activate/deactivate operator dependent services.

Call Service

Tap **Tools** on the Command Bar and select **Options...**, **Call Service...**



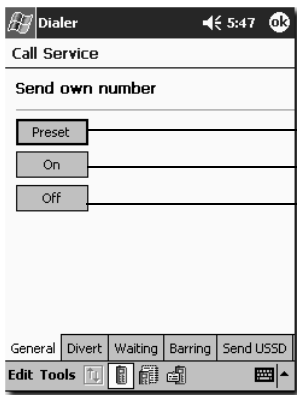
The **Call Service** screen will appear. Tap each tab to view its options.





General

Here you can decide whether you want to send your number to the recipient or not when calling. If you do not send your number while making a call, your number will not appear on recipient's phone.



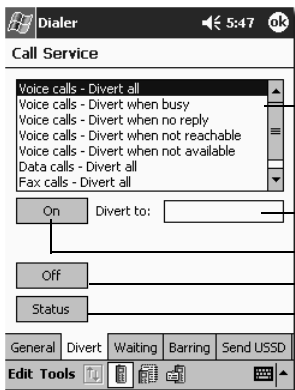
Use your operator default setting.

Send your number.

Don't send your number.

Call divert

If for any reason you can not answer a call, you can activate the call divert function to direct incoming calls to a specific phone number.



Tap to select a divert condition.

Enter the number you want to divert to.

Tap **On** to activate.

Tap **Off** to deactivate.

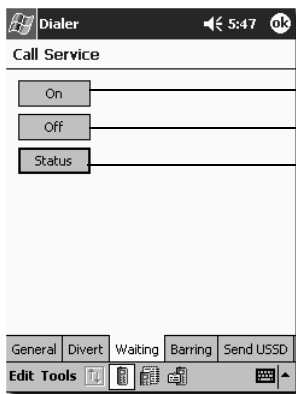
Tap **Status** to inquire current call divert status.



- *Voice call - Divert all*: divert all incoming voice calls unconditionally.
- *Voice call - Divert when busy*: divert all voice calls when you are on a call.
- *Voice call - Divert when no reply*: divert all voice calls when they are not answered.
- *Voice call - Divert when not reachable*: divert all voice calls when you are outside the network coverage area.
- *Voice call - Divert when not available*: divert all voice calls whenever you are not available for answering a call.
- *Data call - Divert all*: divert all data calls.
- *Fax call - Divert all*: divert all fax calls.
- *Cancel all divert calls*: cancel all call divert functions.

Call waiting

You can activate/deactivate the call waiting function here.



Activate call waiting.

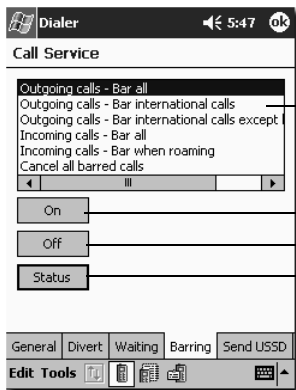
Deactivate call waiting.

Inquire current call waiting status.



Call barring

With this call service, you can bar (restrict) incoming and outgoing calls under certain conditions.



Tap to select a barring condition.

Tap **On** to activate. You will be prompted to enter the call barring code.

Tap **Off** to deactivate.

Tap **Status** to inquire current call barring status.

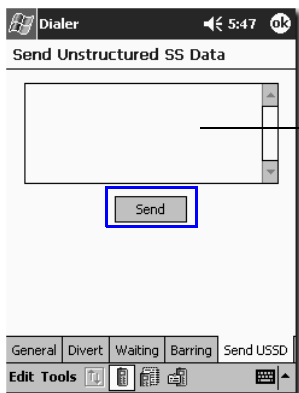
- **Outgoing call - Barring all**: bar all outgoing calls.
- **Outgoing call - Barring international calls**: bar all outgoing international calls.
- **Outgoing call - Barring international calls except home**: bar all outgoing international calls except the calls made to your home country.
- **Incoming call - Barring all**: bar all incoming calls.
- **Incoming call: Barring when roaming**: bar all incoming calls when roaming.
- **Cancel all barring calls**: cancel all call barring functions.

Note: You need network code to enable call barring functions. Please contact your operator for such code.



Send unstructured supplementary service data

You can enter unstructured supplementary service data (USSD) and access related services. For details about the contents of service, please consult your operator.



Enter data here and tap *Send*.

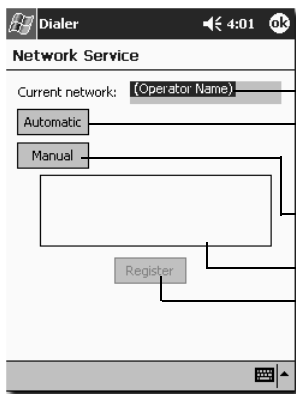


Network Service

Tap **Tools** on the Command Bar and select **Options..., Network Service...**



The network service setting deals with the selection of network. You can let the RTM-8000 select a home network automatically, or when you are roaming under another network, you can select the friendly network manually by yourself.



Current operator name.

Tap **Automatic** to let RTM-8000 select a home network automatically.

Tap **Manual** to let RTM-8000 scan all existing networks and you select one later.

If **Manual** is tapped, available networks will appear in this box and you can tap one and then tap the **Register** button to select.

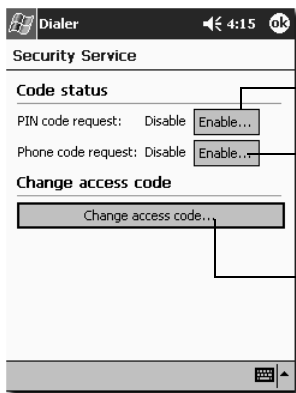


Security Service

Tap **Tools** on the Command Bar and select **Options...**, **Security Service...**



Options in Security service allow you to enable/disable and modify security codes.



Enable/disable PIN code request. If enabled, you will be asked to enter your PIN code when starting Dialer.

Enable/disable phone code request.

Tap to change access codes.



Changing access codes

About the access codes

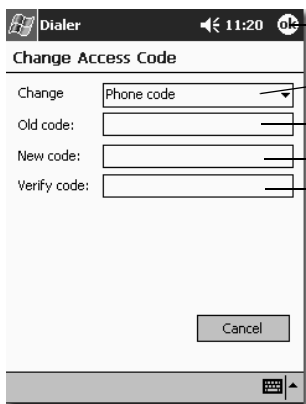
Network Code: The code for accessing your operator's GSM network. You can get such code from your operator

Phone code: The code for preventing unauthorized use of your RTM-8000. If Phone code is enabled, you have to enter it each time you run Dialer. The default Phone code of your RTM-8000 is **12345678**. If you change the phone code from its default value, please write the new code here, or in a safe place of your own choice:

PIN code: The code that is supplied by your operator upon subscription. If the PIN code is enabled, you have to enter it each time you run Dialer.

PIN2 code: The second set of PIN code that is supplied by your operator to control over certain special services.

To change access codes:



5 Tap *ok*.

1 Select the access code you want to change from the drop-down menu.

2 Enter the old code.

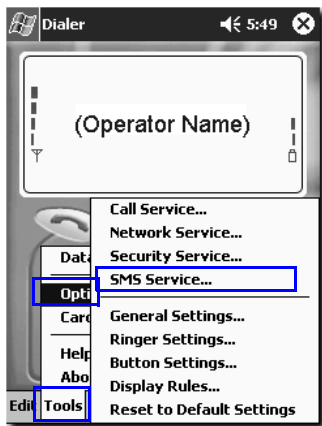
3 Enter the new code.

4 Enter the new code again to verify.



SMS Service

Tap *Tools* on the Command Bar and select *Options...*, *SMS Service...*



Here you can configure message settings. For detailed parameters, please contact your operator.





- **SMS service center:** enter your message service center number (available from your operator).
- **Voice mail number:** enter the voicemail box number (available from your operator).
- **Send as:** depending on the device that will receive your message, tap to select a format for sending messages.
- **Send SMS:** tap to select the type of carrier that is used to send your messages.
- **Delivery report:** tap to check or uncheck the checkbox. If checked, after you send a message, the operator will send you a report, letting you know if the message is sent successfully.
- **Reply path:** tap to check or uncheck the checkbox. If checked, the reply path feature allows the recipient of your message to send you a reply message via your message center.
- **Relative validity** and **Absolute validity:** the validity determines the duration of time the message is stored in the message center if it can not be successfully received by the receiver. You can specify the duration by tapping **Relative validity** and specify a certain weeks, days or hours. Or, you can specify the deadline date by tapping **Absolute validity** and select a date.

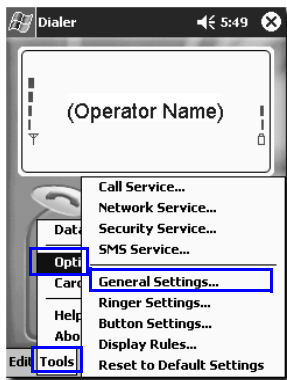


Settings

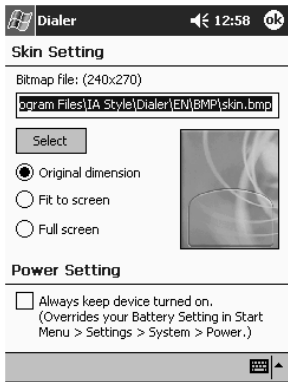
General Settings

The options of General Settings allow you to replace Dialer skin (background) and adjust power settings.

Tap **Tools** on the Command Bar and select **Options...**, **General Settings...**



The General Setting window will appear.





Choosing a skin (background)

You can select any bitmap (.bmp format, 240x270 pixels) file (for example, your favorite photo) as the skin (background appearance) of your Dialer main screen.

Tap *Select* to browse for and select a desired file.

There are three skin options:

- *Original dimension*: keep the original dimension of the skin file you selected.
- *Fit to screen*: if the dimension of the image file you selected does not fit that of screen, fit the image to screen size either by width or by height.
- *Full screen*: stretch (or shrink) the image to screen size. Deformation of image may occur.

Tap *ok* and return to Dialer main screen. The skin is replaced by the image you selected.

Adjust power setting

If the *Always keep device turned on* checkbox is checked, the power of Pocket PC and the RTM-8000 will always remain on and will not enter suspend mode.

The setting here overrides the Power setting of your Pocket PC. In order to prevent loss of data, please be sure to check the battery status of your Pocket PC on a regular basis when using this feature, as some Pocket PC models does not have battery backup.



Ringer Settings

The options of Ringer Settings allow you to customize the ring tones for incoming calls and messages.

Tap **Tools** on the Command Bar and select **Options..., Ringer Settings...**



The screenshot shows the "Ringer Setting" dialog box. It has a title bar with "Dialer", "4:53", and "Ok". The settings are as follows:

- Ring sound:** A dropdown menu showing "RecEnd" with "Add" and "Del" buttons next to it.
- Delay (sec):** A numeric field with "1" and left/right arrow buttons.
- SMS notification sound:** A dropdown menu showing "Alarm1" with "Add" and "Del" buttons next to it.
- Ringer volume:** A slider set to "60%" between "Silent" and "Loud".

Annotations with arrows point to various elements:

- "Tap the arrows to adjust delay duration." points to the delay field arrows.
- "Tap to browse for a .wav file and select it as the ring tone for incoming calls." points to the "Add" button for the ring sound.
- "Tap to delete selected ring tone." points to the "Del" button for the ring sound.
- "Tap to play selected ring tone." points to the play button for the ring sound.
- "Tap to delete selected message alert tone." points to the "Del" button for the SMS notification sound.
- "Tap to play the selected message alert tone." points to the play button for the SMS notification sound.
- "Tap to browse for a .wav file and select it as the message alert tone." points to the "Add" button for the SMS notification sound.
- "Drag the slider to adjust ring tone/alert tone volume." points to the volume slider.

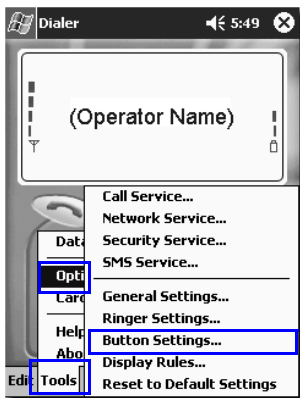


Button Settings

Options of Button Settings allow you to assign several frequently used actions to the hardware buttons of your Pocket PC.

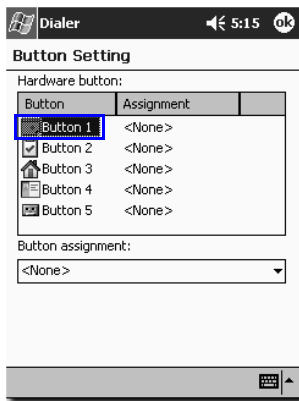
1

Tap **Tools** on the Command Bar and select **Options...**, **Button Settings...**



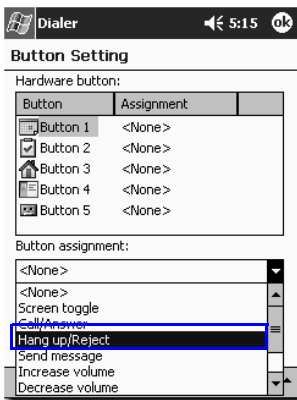
2

Tap to select a button in the **Hardware button** box.



**3**

Tap to select an action in the Button assignment box.

**4**

Tap *ok*. Now you can use the hardware buttons of your Pocket PC to execute their assigned actions.

Note: The *Screen toggle* action allows you to turn off the screen while keeping Dialer active. You can use it to save the power of your Pocket PC.



Display Rules

You can set up the display format of phone numbers in Dialer with the options of Display Rules. Multiple display rules can be established and Dialer will detect the numbers you entered and convert them to corresponding preset formats automatically.

For example, if a 10-digit display rule has been created:

(0x)xxxx-xxxx

When you enter a 10-digit phone number 0234567890, Dialer will change its format into (02)3456-7890 automatically.

If you have multiple display rules with the same number of digits, Dialer will apply the rule that has higher priority.

Establishing a display rule

1

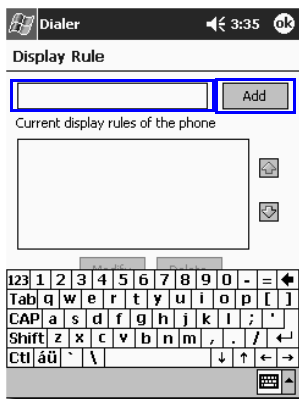
Tap *Tools* on the Command Bar and select *Options..., Display Rules...*






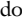
2

Enter a new display rule and tap *Add*.



Note: The new display format is assigned the lowest priority by default.

Changing the priority of a display rule

Tap to select a display rule and then tap  to move the priority one level up, or  to move the priority one level down.

Editing a display rule

To edit a display rule, tap the one you want to edit and tap *Modify*.

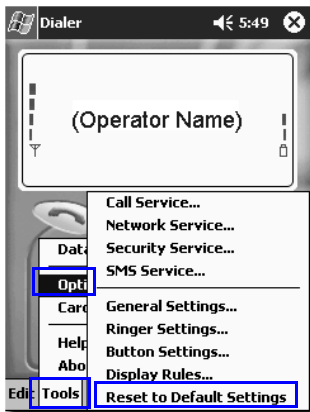
Deleting a display rule

To delete a display rule, tap the one you want to delete and tap *Delete*.



Reset to default settings

To reset the settings of Dialer to their default values, tap *Tools* on the Command Bar and then select *Options, Reset to Default Settings...*





Data Connection

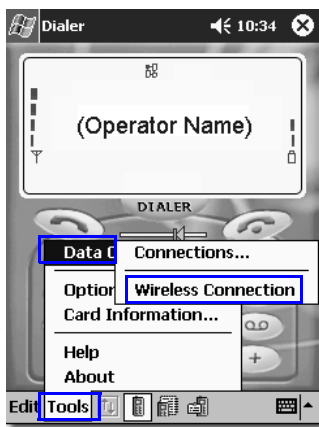
Establishing GPRS Data Connection

Note:

- The GPRS settings must be configured before you can use GPRS data connection. Follow the description in “Install the RTM-8000 to Pocket PC” on page 9 to configure GPRS data connection settings.
- Voice services will be temporarily disabled while GPRS data connection is in use. That is, you will not be able to use Dialer to make/receive calls and send/receive messages while you are using GPRS data connection.

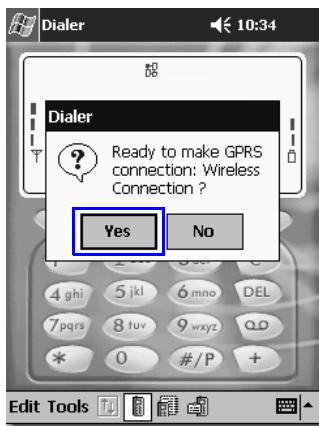
1

Tap *Tools* on the Command Bar and then select *Data Connection*, the new wireless connection you created.

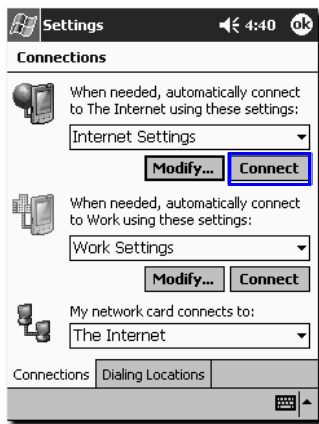


**2**

A dialogue box will appear. Click *Yes*.

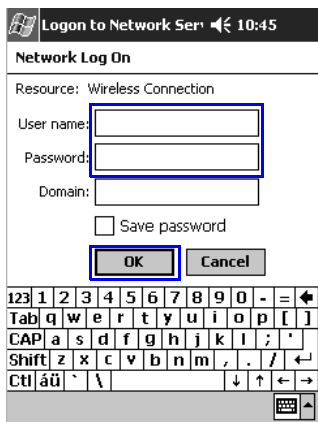
**3**

Tap *Connect*.



**4**

If used, enter the user name and password supplied by your operator. Tap **OK**.

**5**

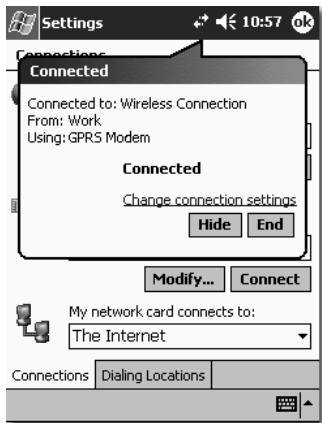
The *Connecting...* dialogue box pops up.





6

If connection is established successfully, *Connected* dialogue box will appear. Now you are ready to surf the Internet using Pocket Internet Explorer or other applications.

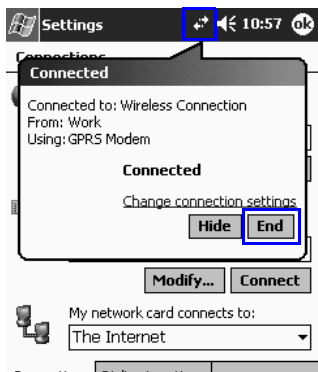




Returning to voice services from GPRS data connection

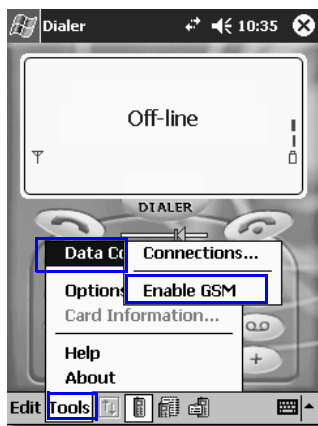
1

Terminate the GPRS data connection by tapping the connection in progress icon (the two-arrow symbol) and then the *End* button in the *Connected* dialogue box that appears.



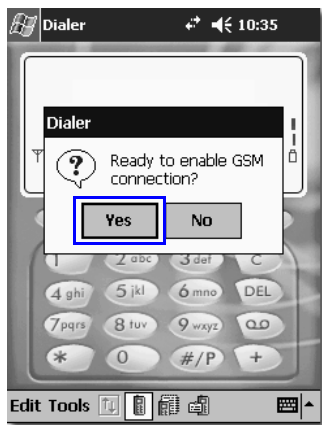
2

Tap *Tools* on the Command Bar and then select *Data Connection*, *Enable GSM*.



**3**

A dialogue box will appear. Tap *Yes*.



Information

Card information

You can view the information about your RTM-8000 here. Tap *Tools* on the Command Bar and select *Card information....* The card information will appear on the screen.

Online Help

To access online instructions on using Dialer, tap *Tools* on the Command Bar and select *Help*.

About Dialer

You can view the information about the Dialer here. Tap *Tools* on the Command Bar and select *About*. The information will appear on the screen.

4

Troubleshooting





Installation of the RTM-8000 is unsuccessful

If you are installing the RTM-8000 to PC, check the following:

- Did you install appropriate driver according to your operating system? Otherwise, re-install using appropriate driver program.
- Did you insert the RTM-8000 into your PC before you are prompted to do so? Remove the driver program using Add/Remove Program in Control Panel and install again. Insert the RTM-8000 when you are prompted to do so.
- If you are using a adapter card, is it broken or damaged?
- Did you insert the RTM-8000 all the way into the slot or adapter card?

If you are installing the RTM-8000 to Pocket PC, check the following:

- Did you enter correct parameters (such as your PIN code if it is activated, or the APN of your operator) when installing the RTM-8000?
- Did you insert the RTM-8000 all the way into the slot of your Pocket PC?

Can not make or receive calls

Check the following:

- Is the SIM card installed? You must install the SIM card to make and receive calls (except emergency calls).
- Have you activated PIN code? If activated, you must enter your PIN code before you can make or receive calls.

Can not establish GPRS connection

Check the following:

- Is such service activated by your operator?
- Did you enter correct parameters (such as your PIN code if it is activated, or the APN of your operator) when installing the RTM-8000?



GPRS connection is slow and unstable

- Disconnect and connect again. You may be switched to a better network trunk line with better communication quality.
- If the problem persists, avoid using GPRS connection during the time when network traffic is heavy, or move to a location where signal reception is better.

Cannot return to voice services from GPRS data connection

Try one of the following:

- Press the "Reset" button of your Pocket PC to reset it.
- Remove the Compact Flash card from your Pocket PC, then insert it into the Pocket PC back again.
- Press the "Suspend" button of your Pocket PC, and then press the button again.

Then run Dialer.

Can not use certain call functions

To use some advanced call functions (such as call divert, call barring or call waiting), you need to subscribe them to your operator.

There is noise during a call

- Avoid using the RTM-8000 near a TV, microwave oven, speaker or other devices that emits strong electromagnetic energy.
- Is the reception of signal in good condition? If not, adjust the direction of the antenna of the RTM-8000, or move to a location where signal reception is better.



<Blank Page>

<Memo>

P/N:PKEDS19002A
D/N:EDS0207ENVerA

Free Manuals Download Website

<http://myh66.com>

<http://usermanuals.us>

<http://www.somanuals.com>

<http://www.4manuals.cc>

<http://www.manual-lib.com>

<http://www.404manual.com>

<http://www.luxmanual.com>

<http://aubethermostatmanual.com>

Golf course search by state

<http://golfingnear.com>

Email search by domain

<http://emailbydomain.com>

Auto manuals search

<http://auto.somanuals.com>

TV manuals search

<http://tv.somanuals.com>