

# LASER

## WOODEN DIGITAL PHOTO FRAME USER MANUAL



## Introduction

Congratulations on your purchase of Your *Brand* Digital Picture Frame

Frame,

Before operating the unit, please read this manual thoroughly, and retain it for future reference. This manual will help you use many of the exciting and useful features that will make your Digital Picture Frame viewing more enjoyable.

This Digital Picture Frame lets you view digital pictures directly from your camera's memory cards. You will be able to create a slideshow using multiple transition effects or display one picture at a time. No computer, digital camera or Internet connection is required.

This Digital Picture Frame is compatible with the following popular memory card formats: CompactFlash®, SD™, XD, MultiMediaCard™, and Memory Stick®.

It can also read files stored on a USB Flash drive using the USB host port.

## Main Features

Displays digital pictures (JPEG) without a computer

Simply insert a compatible memory card into the Digital Picture Frame to show photos, play MP3 music or supported video files

Compatible memory cards include Secure Digital Card (SD), MultiMedia Card (MMC), Memory Stick (MS), XD Cards & Compact Flash

Able to read files located on a USB Flash drive

Instantly plays MP3 music with the integrated speakers.

Instantly plays MPEG1 files stored on supported memory cards\*.

Instantly plays MPEG2 files stored on supported memory cards\*.

Instantly plays MPEG4 files stores on supported memory cards.

Supports up to 12 Mega Pixels image files (JPEG format).

Compatible with most digital cameras' stored JPEG images and motion JPEG files.

Includes a credit card style remote Control

Automatic slide show with multiple transition effects.

Plays slide show with MP3 music on the background.

User-friendly on-screen display lets you access all controls easily.

Interchangeable Frames

\*Video files may not play properly if stored on a low speed card.

## ***Installing your unit***

Open the package and remove the protective foam. Remove the protective sleeve from the unit.

Install the Digital Picture Frame stand as the back of the unit.

Plug in the AC adapter into power outlet. Plug the other end into the unit.

After the content is stored on the target flash media; insert the media into the correct slot.

Turn power to ON position via the ON/OFF switch.

## ***Connecting to a PC***

The Digital Picture Frame has a USB port for connection to a PC (USB Slave) and a second USB port for connection to other devices such as a Flash Drive, USB card reader, or a camera (USB Host). When connected to the PC you can drag-and-drop content from the PC to the internal memory or memory card. You can also delete content from the internal memory.

NOTE: USB Slave and USB Host can not be used at the same time.

Using your Remote Control

The following table briefly describes the remote control functions

**power** : Power On/Off.

**mute** : Mute

**setup** : Enter the basic setup function of player.

**Backmusic** : In media menu, select JPEG file with «UP/DOWN» button, press «SLIDESHOW» button to launch automatic slideshow with background music. The first MP3 file on memory card is launched.

**photo** : enter the photo play mode directly and launch automatic slideshow.

**music** : enter the music play mode directly and launch the first MP3 file saved on the memory card.


**movie** : enter the video play mode directly and launch the first video file saved on the memory card.

**enter** : confirm and enter.

**Vol +/-**: adjust the volume.

 : to launch fast backward or fast forward(2x, 4x, 6x, 8x)

 : to go to preceding or following file

 : to move cursor

(LEFT/RIGHT/UP/DOWN)



## Inserting Memory Cards

The Digital Picture Frame is compatible with the following memory cards:

Secure Digital™ Card (SD)

MultiMedia™ Card (MMC)

Memory Stick™

CompactFlash™ (CF) Card

XD Picture Cards

Insert the memory card with the front label facing AWAY from you. Do not force the memory card into the memory slot. If you are not able to easily insert the memory card completely, you may have inserted it the wrong way.

**Note:**

The Digital Picture Frame will ONLY recognize digital pictures stored in JPEG format. Digital pictures stored in other formats will be ignored by the device.

Make sure you have at least one picture stored on the memory card.

The frame will not function properly without a stored picture.

You also can use a USB flash drive in the exact same way as you would use a memory card. Simply copy files on the flash drive and insert it at the right side of the unit in the USB Host plug.

## Main menu

Upon turning on the Digital Picture Frame, you will go straight to the MENU screen. To set the Auto Start feature Choose the SETUP screen. Use the left/right arrow to go to the "Set up". Press Enter button to enter the options screen. Use the Up / down arrows to choose your auto start option. Press the "MENU" button to show the following menu:



Use the left and right arrows to move inside the menu and then press "Enter" to continue

Note: In all menus, pressing the "Menu" button will bring you back to the main menu

Function	Description
Setup	Set system menu
Calendar	Display calendar, clock, alarm (only for special requirement)
SD/MMC/MS/xD	Play files on SD/MMC/MS/xD memory card
CF	Play files on CF memory card
USB	Play files on USB flash drive

NOTE: Icons of above functions shall appear automatically on MENU screen when certain memory card is inserted. Icons shall disappear when correspondent card is removed from card slot.

## Viewing Pictures

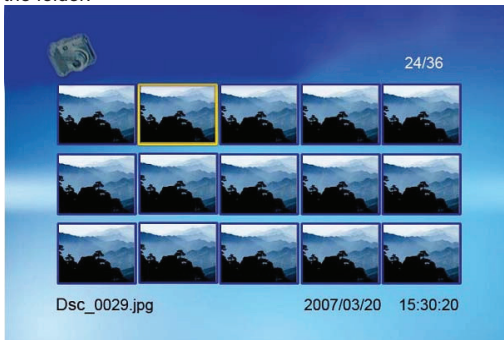
Make sure you have at least one picture on your memory card or your USB flash drive. When this is done:

Select the desired flash media on main menu.  
(SD/xD/CF/MS/USB/NAND-Internal Memory)


Select the "PHOTO" option from the menu and press "ENTER"

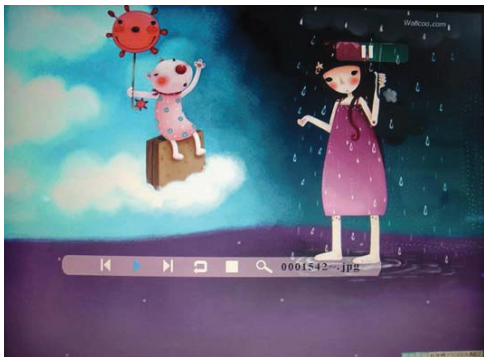


A Photo thumbnail will appear. User UP/DOWN/LEFT/RIGHT arrows can move the highlight. If the highlighted is a folder, press Enter to enter the folder.



Otherwise press Enter to enter the full screen photo (pause mode) and press Play to enter into slideshow mode.

Once a slideshow is playing or a picture is being shown, press the  button. The following menu will appear:



### **Previous**

Play previous picture in the picture list

### **Play or Pause**

Play or pause the current slideshow.

### **Next**

Play next picture in the picture list

### **Rotate**

Use the rotate function to change the picture orientation to either portrait or landscape.

### **Stop**

Stop slideshow and return to photo thumbnail.

### **Zoom**

Increase the size of the picture by 2/4/8/16/1 times.

## Watching video

The Digital Picture Frame supports the following video formats:

Motion JPEG (.avi): video format used by most digital cameras

MPEG-1

MPEG-2

MPEG 4

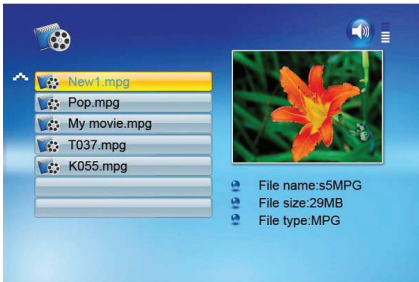
Make sure you have at least one video on your memory card or your USB flash drive. When this is done:

Select the desired flash media on main menu.  
(SD/xD/CF/MS/USB/NAND-Internal Memory)


Select the "MOVIE" option from the menu and press "ENTER"



A list of all movie files will be listed on the left side of the screen. The right side consists of the movie preview window and information display of the current movie. Use Up/Down arrows to select the movie and press Enter to play.





Once a movie is playing, press the  button on the remote control. The following menu will appear:



### **Previous**

Play previous movie in the play list

### **Fast Forward**

Play forward the movie by 2/3/4 times speed.

### **Play or Pause**

Play or Pause the movie.

### **Fast Backward**

Play backward the movie by 2/3/4 times speed.

### **Next**

Play next movie in the play list

### **Stop**

Stop the movie and return to the playlist

### **Zoom**

Increase the size of the picture by 2/3/4/1 times.

## Listening to MP3 music

Make sure you have at least one MP3 file on your memory card or your USB flash drive. When this is done:

Select the desired flash media on main menu.  
(SD/xD/CF/MS/USB/NAND-Internal Memory)

Select the "MUSIC" option from the menu and press "ENTER"



A list of music files will be listed on the left side of the screen. The right side consists of the frequency chart and information status bar. The song information area is below the status bar. Use Up/Down arrows to select the music file and press Enter to play.



Press VOL+ to increase the volume or VOL- to decrease the volume. Press Play/Pause button on remote control to play or pause the music file.

Press Stop button on the remote control to return to the list of music files.

## ***File Management***

### ***Playing a slideshow with music***

Ensure you have at least one picture on your memory card or your USB flash drive. Additionally, you must have one MP3 file saved on the selected memory card/USB/Internal Memory. When this is done:

Select the desired flash media on main menu. (SD/xD/CF/MS/USB/NAND-Internal Memory)

Select the "FILE" option from the menu and press "ENTER"



A list of all files on the selected memory card or internal memory will be listed on the left side of the screen. The right side consists of the file information. Use Up/Down arrows to select a picture file and press Enter to enter a full screen photo (pause mode). Press Play button on the remote control, an audio slideshow will begin automatically.

Once an audio-slideshow is playing, press the OSD button. The following menu will appear:



### **Previous**

Play previous picture in the picture list

### **Play or Pause**

Play or pause the current slideshow.

### **Next**

Play next picture in the picture list

### **Rotate**

Use the rotate function to change the picture orientation to either portrait or landscape.

### **Stop**

Stop slideshow and return to photo thumbnail.

### **Zoom**

Increase the size of the picture by 2/4/8/16/1 times.

### **VOL**

Press VOL+ or VOL- on remote control to increase or decrease the volume

## Copying and Deleting Files

To copy and delete files on your memory card, USB drive or internal memory.

### Copy

Select the desired flash media on main menu. (SD/xD/CF/MS/USB/NAND-Internal Memory)

Select the "FILE" option from the menu and press "ENTER"

A list of available files will be displayed. Use the up and down arrows to highlight your required file and press the right arrow to highlight the desired file. Repeat for all files that you want to copy

Press the "OSD" button to display the Copy and Delete menu. Select Copy function and Enter.



Use Up/Down arrows to select the file destination folder. Press Right button to confirm.



Press Enter to start copying the file.

Delete

Select the desired flash media on main menu.  
(SD/xD/CF/MS/USB/NAND-Internal Memory)

Select the "FILE" option from the menu and press "ENTER"

A list of available files will be displayed. Use the up and down arrows to highlight your required file and press the right arrow to highlight the desired file. Repeat for all files that you want to copy

Press the "OSD" button to display the Copy and Delete menu. Select Delete function and press Enter. File will be deleted.

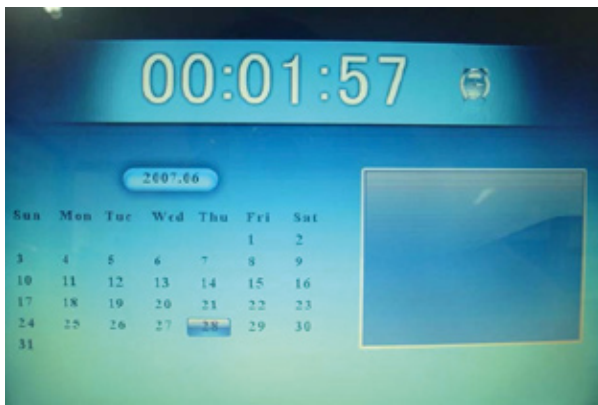
## Using the SETUP option

The following options can be changed by using the "SETUP" option from the main menu:

Function	Description
Language	Includes English, French, Spanish , Russian
Slideshow time	Slideshow duration: 5s/10s/30s
Transition Effect	Off, Random, Fading, Bottom_to_top Top_to_bottom, Left_to_right, Right_to_left, Door_close, Door_open, Hori_cross, Verti_cross
Music Repeat Mode	Repeat one, Repeat all, Repeat off
brightness	Range of the brightness scale is 0-16
Contrast	Range of the contrast scale is 0-16
Saturation	Range of the saturation scale is 0-16
Movie Repeat Mode	Repeat one, Repeat all, Repeat off
Display mode	Crop, Stretch, Cinema
Time	Year/Month/Date/Time setup
Alarm	Alarm Time/Alarm Music/Alarm On/off setup
Default	Recover the factory default setup

Calendar/Clock Display (Only for Special requirement)

Upon turning on the Digital Picture Frame, you will go straight to the MENU screen. If you select Calendar/Clock and press Enter, you will go to Calendar/Clock screen. If the Alarm is turned on, it will also show the alarm time. A picture slideshow will begin at the picture preview window at the right part of the screen.



## Specifications



Type	Digital Picture Frame
Internal Memory	128 MB~2GB
Resolution	800 x 600 or 1024x768
Alimentation	12 V
Consumption	6 Watts
Working Temperature	-20 to +65 degrees
Luminosity	300cd/m <sup>2</sup> max.
Contrast	400:1
Viewing Angle	50/65/65/65 (CR=10)
Response Time	18ms
Display Mode	4:3
File Format	JPEG, MPEG1, MPEG2, MP3, MPEG4
Photo Size	12 Mega Pixels
Current	AC110—240V (50HZ—60HZ)
Cards	SD/MMC/MS/CF/XD/USB
USB ports	USB Host, USB Slave
Accessories	Digital Picture Frame AC/DC Adapter User Guide Remote control

## Maintenance and Precaution

The Digital Picture Frame is for indoor use only.

To reduce the risk of fire or electric shock; do not expose this appliance to rain or moisture.

Do not block the ventilation holes on the back of the Digital Picture Frame at any time.

Keep your Digital Picture Frames out of sunlight. Direct sunlight may cause damage.

Do not open the case of the Digital Picture Frame. There is a risk of electric shock, and there are no user serviceable parts inside. Opening the case will void your warranty.

Do not use the Digital Picture Frame if conditions could allow condensation to occur, or damage may result.

Your Digital Picture Frame is a complicated electronic device and cannot withstand shock from drops.



## ***Cleaning the LCD screen***

Treat the screen gently. The screen on the Digital Picture Frame is made of glass and can be scratched or broken.

If fingerprints or dust make the LCD screen dirty, we recommend using a soft, non-abrasive cloth such as a camera lens cloth to clean the LCD screen.

If you use an LCD Cleaning Kit sold on the market, apply the cleaning liquid to the cloth. Do not apply the liquid directly to your LCD screen.

## Free Manuals Download Website

<http://myh66.com>

<http://usermanuals.us>

<http://www.somanuals.com>

<http://www.4manuals.cc>

<http://www.manual-lib.com>

<http://www.404manual.com>

<http://www.luxmanual.com>

<http://aubethermostatmanual.com>

Golf course search by state

<http://golfingnear.com>

Email search by domain

<http://emailbydomain.com>

Auto manuals search

<http://auto.somanuals.com>

TV manuals search

<http://tv.somanuals.com>