



User's Manual

MP4-P13 Quick guide

Declaration

Thanks for purchasing our personal media player. This manual contains detailed information and instructions to help get the most out of your digital MP4 player.

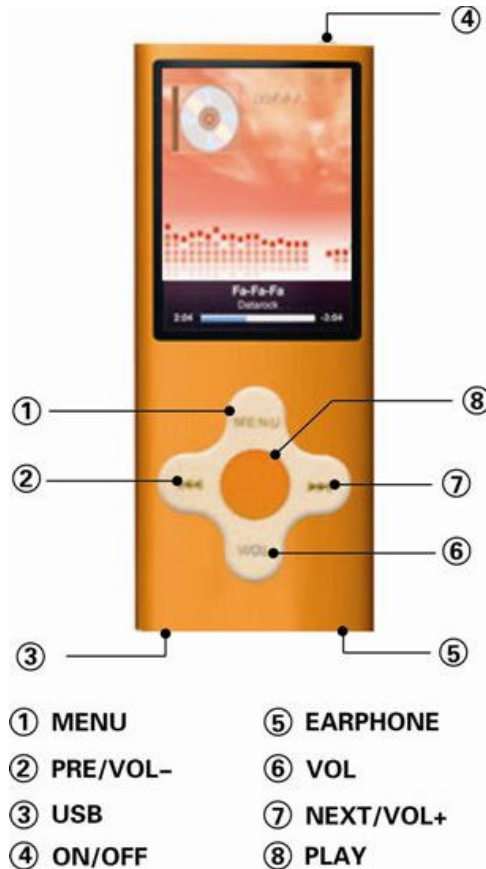
Please read this manual carefully before using your new player.

NOTICE

- Please switch on the player before charging (Push the ON/OFF switch to "on"). This player cannot be charged with the ON/OFF switch in the "off" position.
- When connecting to the computer for file transfer please leave the ON/OFF switch in the "off" position to conserve the battery.
- For short periods Press and hold the "play" button for longer than 3 seconds to suspend the player. The player is started again by the same method and you will be returned to the last used screen.
- Please switch off the power if not using the player for long periods.
- Do not use this player in extreme hot, cold, dusty or wet environments or drop the player.
- Images shown in this manual may vary slightly from actual product.
- Please respect the Copyright laws in your country.

Know your player

- **Exterior and Key**



Music

1. Insert the earphones into the socket 5, as shown above, or else music will be played through the internal speaker.
2. Move the power switch to the "on" position. If already "on" please see step 3.
3. Press and hold the "play" button to power on, use the "Prev" or "Next" Button to select the "Music" feature. Press the "menu" button to enter music playback mode.
4. Press the "Play" button to start music playback of current file. Press "Play" button again to pause playback.
5. Choosing music files:
 - "Prev": To choose the previous music file.
 - "Next": To choose the next music file.
6. This player supports "*.LRC" lyric files (users may download from <http://www.51lrc.com>), and lyrics may be displayed isochronously while playing music. Lyric files must be in the same folder as the music file and have the same name as the music file e.g. Track1.MP3 and Track1.LRC

7. Volume control: Press the "VOL" button and then short press "VOL-", to decrease volume; short press "VOL+" to increase volume. The display will revert to playback mode after a few seconds from the last button pressed or by pressing the "Menu" button.
8. Please see the diagram below for a description of icons displayed in Music playback mode.



Play Back Options

These features can be accessed during Playback mode while the track is playing.

1. During playback, press the "menu" button to access the playback features.
2. Use the "Prev" or "Next" button to select the feature and then press the "Menu" button to select. Once the selection is made the screen will return to playback mode.
3. To exit the options menu and return to playback mode, press and hold the "menu" button.

o REPEAT

(Normal)	Plays current music file only.
(Repeat One)	Repeats current music file.
(Folder)	Plays all music files in current folder.
(Repeat Folder)	Plays and repeats all music files in current folder.
(Repeat All)	Plays and repeats all music files.
(Random)	Plays all the music files in the current folder in random order.
(Intro)	Plays only the first 10 second of each music file in the current folder.

Equaliser

The following preset Equaliser (EQ) settings are available

- Natural
- Rock

- Pop
- Classic
- Soft
- Jazz
- DBB

Use the "Menu" button to select the required EQ setting.

1. Press "next" to choose "Equaliser"
2. Press "Menu" to enter "Equaliser"
3. Press "next" to choose, short press "Menu" to confirm.
4. When selection is made, the display will return to playback mode.

SRS WOW.

The following SRS WOW settings are available.

SRS WOW	Turns SRS WOW on
User settings (Select as per listening requirements)	SRS 3D TruBass Focus Exit (returns to previous menu)
Disable SRS WOW	Turns SRS WOW feature off

Tempo rate

Adjusts the playback speed of music files.

1. Press the "Menu" Button to select option.
2. Use the "Prev" and "Next" buttons to adjust the playback speed. "0" being normal playback speed.
3. When the required speed has been selected, press the "Play" button to return to play back mode. All music playback will be played at selected speed until reset.

Replay (A-B mode)

Allows a portion of a track to be repeated.

1. When selected during playback, you will be returned to the playback screen. The "A" of the "A-B" icon will flash. At the start of the part of the track to be repeated, press the "Next" Button.
2. Wait for the end of the part of the track to be repeated, then press the "Next" button.
3. The playback will start again at the point set on step 1 and continue to the point set in step three, and will repeat as many times as set in Replay Times. (See below).
4. When the selection has been repeated the set number of times, playback will return to normal waiting for the next repeat selection to be marked.
5. Press the "Menu" button to cancel and resume normal playback.

Replay times

Set the number of times, from 1 to 10, selection is replayed when Replay mode is selected.

Replay Gap

Sets the gap between selection replay, when Replay mode is used.

Exit

Returns to previous Screen.

Play Back Options (File Management)

These features can be accessed during Playback mode while the track is paused. Use this feature with caution as deleted files cannot be recovered.

1. In playback mode when playback is paused, press the "menu" button to access the playback file management feature.
2. Use the "Prev" or "Next" button to select the required feature and then press the "Menu" button to select. Once the selection is made, the screen will return to playback mode.
3. You will be prompted to confirm file deletion. Please follow on screen prompts.
4. To exit options menu and return to playback mode, press and hold the "menu" button.

Local folder	Choose the folder containing required tracks.
Delete	Deletes current file.
Delete All	Deletes all files in current folder.
Exit	Returns to Playback screen

Movie (this feature requires video files to be converted prior to being transferred to player)

1. From the Main Menu use the "Prev" or "Next" Button to select the "Movie" feature. Press the "menu" button to enter Video playback mode.
2. Press the "Play" button to start video playback of current file. Press "Play" again to pause playback.
3. Choosing music files:
4. "Prev": To choose the previous video file.
5. "Next": To choose the next Video file.

Movie Playback options

These features can be accessed during Playback mode while the track is paused. Use this feature with caution as deleted files cannot be recovered.

Please use navigation instructions as described in music playback options.

RF setting (option)	Enable/Disable
Local folder	Choose the folder containing required files.
Delete	Deletes current file.
Delete All	Deletes all files in current folder.
Repeat	Please see Repeat options as described in Music Play Back features
Exit	Returns to Playback screen

Record

1. From the Main Menu use the "Prev" or "Next" Button to select the "Record" feature. Press the "menu" button to enter Voice Record mode.
2. Press the "Play" button to start recording. Press "Play" again to pause recording.
3. Press "play" to restart recording.
4. When recording is completed, Press and hold the "Play" button to save the file.
5. The next recording will saved as a new file.

Voice record Options

These features can be accessed during Playback mode while the track is paused. Use this feature with caution as deleted files cannot be recovered.

Please use navigation instructions as described in music playback options.

Local folder	Choose the folder to save recording.
REC Type	Select recording setting to best suite your needs Fine REC (32K WAV) Long REC (ACT) Fine VOR (32K VOR) Long VOR (8k VOR)
Exit	Returns to Record screen

Voice Playback

Playback of files recorded in Record mode.

1. From the Main Menu use the "Prev" or "Next" Button to select the "VOICE" feature. Press the "Menu" button to enter Voice playback mode.
2. Press the "Play" button to start playback of current file. Press "Play" again to pause playback.
3. Choosing voice files:
4. "Prev": To choose the previous Voice file.
5. "Next": To choose the next Voice file.

Voice Playback options

These features can be accessed during Playback mode while the track is playing.

Please use navigation instructions as described in music playback options.

Repeat	See options as listed in Music playback options.
--------	--

Replay	Please see replay options as described in Music Play Back features
Exit	Returns to Playback screen

Voice Playback (file management)

These features can be accessed during Playback mode while the track is paused. Use this feature with caution as deleted files cannot be recovered.

Please use navigation instructions as described in music playback options.

Local folder	Choose the folder containing required files.
Delete	Deletes current file.
Delete All	Deletes all files in current folder.
Exit	Returns to Playback screen

FM Radio

This feature requires the earphone to be fitted to the player. The radio will not work without the earphones being connected. When earphones are connected, no sound will be heard through the internal speaker.

1. Enter the main menu
2. Press "next" to select "FM Radio" mode
3. Press "Menu" to enter FM mode
4. Automatic search:
Press and hold "Prev" or "next" for two seconds, the player will search in the required direction and will stop when a station is found; if you want to stop researching, press "Prev" or "next".
5. Store the stations searched
Short press "Menu" to enter sub menu.
Short press "Menu" again to store it

FM Radio (options)

These options can be accessed while FM radio feature is running. Press the "Menu" button to access these features

Save	Save Current Station
Record	Records Current station in Voice record mode. Starts in "pause" press "play" to start recording
Delete	Deletes current saved station
Auto Search	Automatically searches for stations
Normal Band	Selects normal FM radio band

Japan Band	Selects FM radio Band as used in Japan
Exit	Returns to FM Radio Screen

Photo

This feature displays Jpeg and BMP files that are stored on the player.

Enter the Main Menu and use the "Prev" or "next" to select the Photo icon and then press "Menu." For file management press the "Menu" Button before selecting a file.

The following options are available.

Local folder	Choose the folder containing required files.
PlaySet	Manual Auto
Delete File	Deletes current file
Delete All	Deletes all files in current folder.
Exit	Returns to previous screen.








Display Pictures

Select the file to be displayed by using the "prev" or "next" button and then press "play" button to view the picture. Navigation to different folders is as described in previous areas of this manual. Use the "Prev or "Next" Button to display the previous or next file in the current folder.

Setup

1. Enter the Main Menu and use the "Prev" or "next" to select the "Setup" icon and then press "Menu." To enter the main Setup menu
2. Press the "Prev" or "Next" button to select the required option.
3. Press "Menu" to enter the option.

Introduction of each item of appendix

System Time	Set the date and time to date stamp recordings
LCD set	Set delay for the screen to turn its self off after last key is pressed 0=disabled.
Language	Sets Required language for display. 21 choices.
 Power off	Sets time for play to auto turn off. 0 = Disabled
 Replay mode	Sets the working condition of replay process
 Online mode	The item of "different space" function (software required. Feature may not be available)
 Memory info	Checks the storage space currently used.
 Firmware Version	Displays the player's Firmware edition
 Firmware Upgrade	Specifically for Firmware upgrading
 Exit	Exits the present interface

E-book

1. Enter the Main Menu and use the "Prev" or "next" to select the "E-Book" icon and then press "Menu." button to enter the "E-Book feature.
2. Press the "Prev" or "Next" button to select the required E-book file.
3. Press "Menu" to display the file.
4. Use the "Prev" or "Next" button to navigate through the file.

Game.

Russia Block

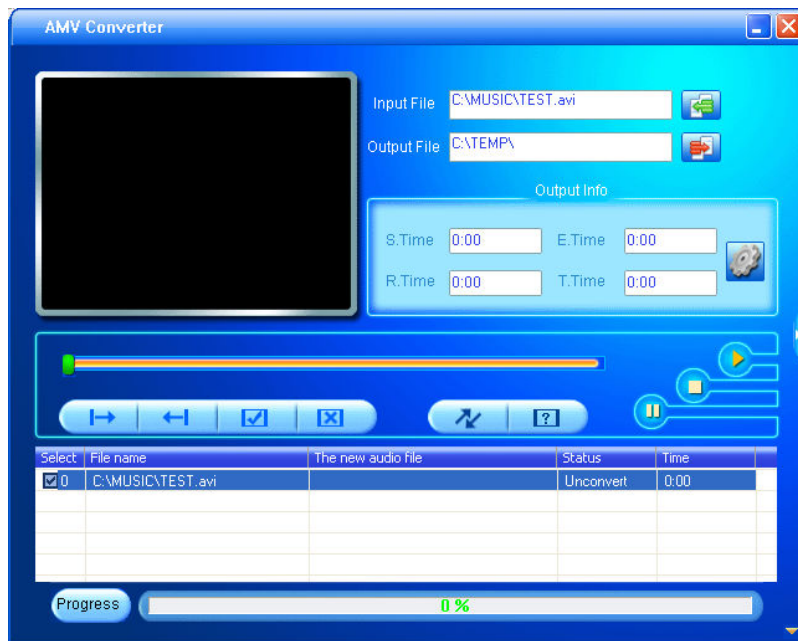
NB: Game may vary


1. Enter the Main Menu and use "Prev" or "next" to select the "Game" icon and then press "Menu" button to enter the "Game" feature.
2. Press the "Prev" or "Next" button to select the required "Game" file.
3. Press "Menu" to start the game.
4. During game player, use the "Prev" or "Next" buttons to move the block from side to side as they descend. Use the "play button to rotate the block .

Converting Video files

Video files must be converted prior to being downloaded to the player.

1. Install the MP3set4_15 program as supplied on the software CD.
2. When the installation is complete, launch the AMV converter tool from the main menu on your computer.
>START>PROGRAMS>MP3 PLAYER UTILITIES 4.15>AMV CONVERTOR.



3. Use the Browse icon next to the "Input File" field to locate the file to be converted.
4. Use the Browse icon next to the "Output file" icon to select the destination for the converted file.
5. Make sure that the "select" box is checked.
6. Click on the  button to begin the conversion process.
7. The file conversion progress will be displayed in the Status field.
8. Copy the converted file to the player.

For more detailed instructions on this program, Press the "F" key to launch the help file.

Troubleshooting

No Power	Make sure you have switched the player on. And ensure that the battery is fully charged
No Sound	Make sure volume is not set to 0 position, and the connection to earphones is correct. Please make sure the earphones are clean. Damaged MP3 files may appear to play but generate no sound.
Strange characters on display	Make sure you have chosen the correct language.
FM has bad performance	Change location to ensure good reception. Earphones must be connected. Switch off power appliances nearby
Cannot Download Music	Check USB cable, and make sure the player is properly connected to the PC. Check files are the correct format. Music files must be WMA or MP3 with no copy protection.
Video files will not play	Ensure that video files have been converted prior to downloaded to the player.
For support visit	http://laserco.com.au/downloads.htm

Free Manuals Download Website

<http://myh66.com>

<http://usermanuals.us>

<http://www.somanuals.com>

<http://www.4manuals.cc>

<http://www.manual-lib.com>

<http://www.404manual.com>

<http://www.luxmanual.com>

<http://aubethermostatmanual.com>

Golf course search by state

<http://golfingnear.com>

Email search by domain

<http://emailbydomain.com>

Auto manuals search

<http://auto.somanuals.com>

TV manuals search

<http://tv.somanuals.com>