

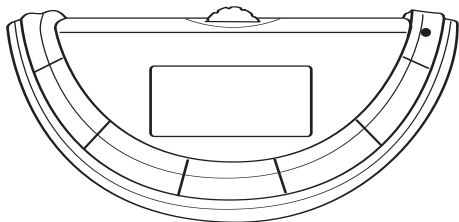
Memorex®

Is it live or is it Memorex?™

MMP8560

User's Guide

*Personal FM Stereo
MP3/WMA/WAV Player*



Before operating this product,

please read these instructions completely.

Downloaded from www.pdfbooks.us All Rights Reserved. Best PDF Download.

PRECAUTIONS

COPYRIGHT:

- Distributing copies of MP3, WMA with DRM or WAV tracks without permission is a violation of international copyright laws.

SAFETY:

- Vibration experienced during walking or exercising will not affect the player. However, dropping the player or dropping a heavy object on the player may result in damage or sound distortion.
- Avoid spilling any liquid onto or into the player.
- Do not leave the player in a location near heat sources; in a location subject to direct sunlight, excessive dust, sand, moisture, rain or mechanical shock; on an unlevel surface; or in a car with the windows closed during periods of excessive heat.

ROAD SAFETY:

- Do not use headphones while driving, cycling or operating any motorized vehicle. It may create a traffic hazard and it is illegal in some areas. It can be potentially dangerous to play your headset at a high volume while walking, especially at pedestrian crossings. You should exercise extreme caution or discontinue use in potentially hazardous situations.

FCC WARNING:

- This equipment may generate or use radio frequency energy. Changes or modifications to this equipment may cause harmful interference unless the modifications are expressly approved in the instruction manual. The user could lose the authority to operate this equipment if an unauthorized change or modification is made.

FCC DECLARATION

This device complies with Part 15 of the FCC rules. Operation is subject to the following two conditions: 1) This device may not cause interference, and 2) This device must accept any interference received, including interference that may cause undesired operation.

Warning: Changes or modifications to this unit not expressly approved by the party responsible for compliance could void the user's authority to operate the equipment.

NOTE: This equipment has been tested and found to comply with the limits for a Class B digital device, pursuant to Part 15 of the FCC Rules. These limits are designed to provide reasonable protection against harmful interference in a residential installation. This equipment generates, uses and can radiate radio frequency energy and, if not installed and used in accordance with the instructions, may cause harmful interference to radio communications.

However, there is no guarantee that interference will not occur in a particular installation. If this equipment does cause harmful interference to radio or television reception, which can be determined by turning the equipment off and on, the user is encouraged to try to correct the interference by one or more of the following measures:

- Reorient or relocate the receiving antenna.
- Increase the separation between the equipment and receiver.
- Connect the equipment into an outlet on a circuit different from that to which the receiver is connected.
- Consult the dealer or an experienced radio/TV technician for help.

Shield cable must be used with this unit to ensure compliance with class B FCC limits.



Dear Customer:

Selecting fine audio equipment such as the unit you've just purchased is only the start of your musical enjoyment. Now it's time to consider how you can maximize the fun and excitement your equipment offers. This manufacturer and the Electronic Industries Association's Consumer Electronics Group want you to get the most out of your equipment by playing it at a safe level. One that lets the sound come through loud and clear without annoying blaring or distortion and, most importantly, without affecting your sensitive hearing.

Sound can be deceiving. Over time your hearing "comfort level" adapts to higher volumes of sound. So what sounds "normal" can actually be loud and harmful to your hearing. Guard against this by setting your equipment at a safe level BEFORE your hearing adapts.

To establish a safe level:

- Start your volume control at a low setting.
- Slowly increase the sound until you can hear it comfortably and clearly, and without distortion.

Once you have established a comfortable sound level:

- Set the dial and leave it there.

Taking a minute to do this now will help to prevent hearing damage or loss in the future. After all, we want you listening for a lifetime.

We Want You Listening For A Lifetime

Used wisely, your new sound equipment will provide a lifetime of fun and enjoyment. Since hearing damage from loud noise is often undetectable until it is too late, this manufacturer and the Electronic Industries Association's Consumer Electronics Group recommend you avoid prolonged exposure to excessive noise. This list of sound levels is included for your protection.

Decibel

Level

Example

30	Quiet library, soft whispers
40	Living room, refrigerator, bedroom away from traffic
50	Light traffic, normal conversation, quiet office
60	Air conditioner at 20 feet, sewing machine
70	Vacuum cleaner, hair dryer, noisy restaurant
80	Average city traffic, garbage disposals, alarm clock at two feet

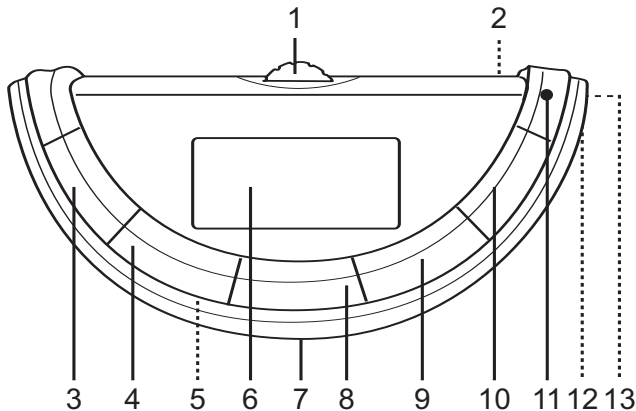
THE FOLLOWING NOISES CAN BE DANGEROUS UNDER CONSTANT EXPOSURE:

90	Subway, motorcycle, truck traffic, lawn mower
100	Garbage truck, chain saw, pneumatic drill
120	Rock band concert in front of speakers, thunderclap
140	Gunshot blast, jet engine
180	Rocket launching pad

Information courtesy of the Deafness Research Foundation.

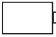


LOCATION OF CONTROLS



1. Navigation Control
(Navigation Up/Down, Menu, CD Skip/Search ►/◀, Radio Tuning Up/Down)
2. LOCK Switch (rear of unit)
3. VOLUME - Button
4. VOLUME + Button
5. Battery Compartment
(Under Peel)
6. Display
7. Peel
8. Play/Pause ►|| (Enter) Button
9. Power/Stop (Exit) Button
10. EQ/ > (Play Mode) Button
11. Strap Hole
12. USB Port (Side of Unit)
13. Headphone Jack
(Side of Unit)

BATTERY INSTALLATION

When the bars in the battery indicator (in the display) become  Batt. Low, replace the battery as follows.

 Batt. Full

1



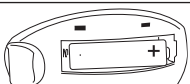
Hold the unit as shown at the figure.

2



Then pull out the Peel from the top edge.

3



Insert one (1) "AAA" battery as shown. An alkaline battery is recommended for the longest playing time.

NOTES:

- Refer to the next page (Step 3 through Step 6) for how to replace the Peel.
- Before removing the Peel, make sure the headphones are removed from the Headphone jack.

BATTERY PRECAUTIONS

Follow these precautions when using a battery in this device:

1. Use only the size and type of battery specified.
2. Be sure to follow the correct polarity when installing the battery as indicated. Reversed batteries may cause damage to the device.
3. If the device is not to be used for a long period of time, remove the battery to prevent damage or injury from possible battery leakage.
4. Do not try to recharge batteries not intended to be recharged; they can overheat and rupture. (Follow battery manufacturer's directions.)

REMOVING & REPLACING THE PEEL

Remove the Peel and replace the Peel with one of the included Peels as follows:

1



To remove the Peel, hold the unit as shown at the figure.

2



Then pull out the Peel from the top edge.

3



To replace the Peel, pull out the USB cover slightly.

4



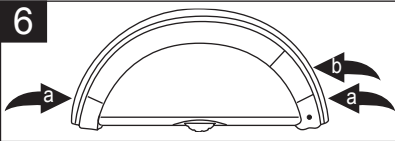
Make sure the tabs at the Peel are aligned to the corresponding slots on the main unit.

5



Make sure the USB cover is inserted through the USB hole in the peel (a), then press the middle area of the peel until it locks in place.

6



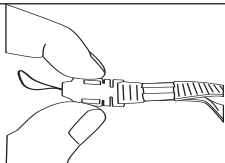
Press on the left and right side of the peel until it is securely on the unit (a). Replace the USB cover (b).

NOTE: Before removing the Peel, make sure the headphones are removed from the Headphone jack.

Download from www.Somanuals.com. All Manuals Search And Download.

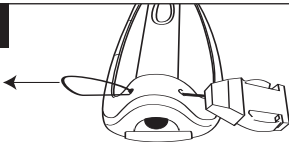
USING THE NECKLACE STRAP

1



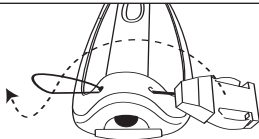
Remove the neck strap cord by pressing and releasing it.

2



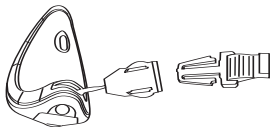
Insert the cord through the strap hole.

3



Loop the cord around the locking piece and pull until tightened.

4



Attach the neck strap to the locking piece until a click is heard.

INSTALL "DIGITAL AUDIO PLAYER" SOFTWARE

TO INSTALL THE "DIGITAL AUDIO PLAYER" CD SOFTWARE

For Windows ME, Windows2000 or Windows XP:

Windows will automatically detect the audio player without installing the CD software when the USB cable is connected.

For Macintosh OSX:

Macintosh OSX will automatically detect the audio player without installing the CD software. Do not install the software when using a Macintosh.

For Windows98SE:

The USB mass storage function will not be activated without driver installation. To activate the USB mass storage function, please use the installation CD-Rom to install the driver.

For Windows 98SE, if you are connecting your player to your computer for the first time, please follow these instructions:

Procedure to Install Player Driver

1. Insert the Installation CD-Rom into the CD Drive; the auto-run program will display the Main Menu window. Click "Software Drivers".

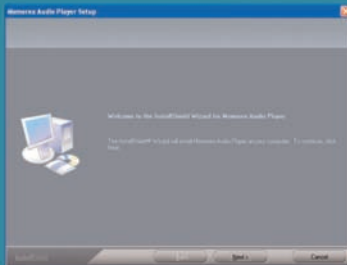
NOTE: If the Main Menu window does not appear, double click "Memorex Startup CD" application file on the Installation CD to open the Main Menu window.



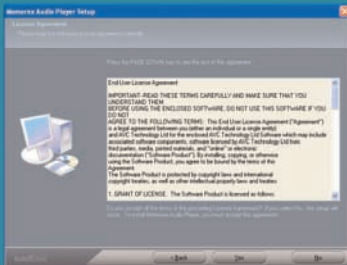
WINDOWS 98 DRIVER INSTALLATION

- Click "MMP8560" to run the Windows 98SE driver.
- Follow the on-screen instructions to install the software.

Memorex Audio Player

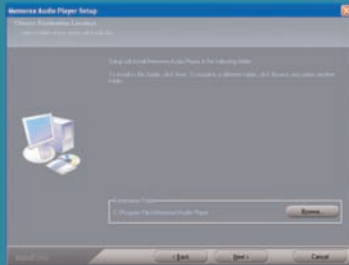


Memorex Audio Player



WINDOWS 98 DRIVER INSTALLATION (CONTINUED)

Memorex Audio Player



4. Install the software under the directory as prompted.

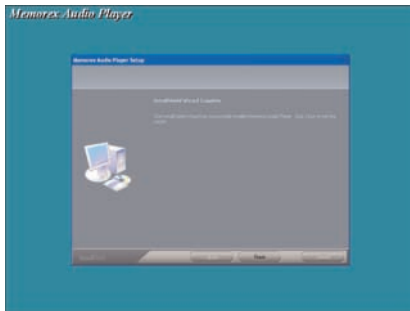
Warning: DO NOT change the installation path. Otherwise, the driver may not run properly.

Memorex Audio Player

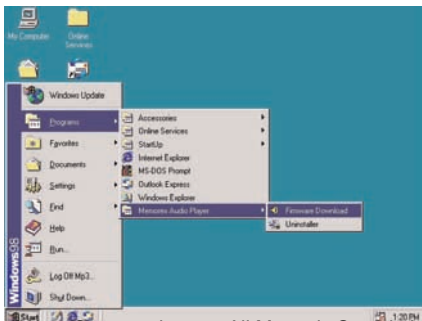


WINDOWS 98 DRIVER INSTALLATION (CONTINUED)

5. After successfully installing the driver software, click "Finish" to finish the installation and exit the Setup menu.



6. When the installation has completed, the new program, "Memorex Audio Player", will be added to the PROGRAM menu on your computer.



DOWNLOADING AND TRANSFERRING FILES

TRANSFERRING FILES

You can download digital music files from the Internet or use encoding software to convert music that you have on an audio CD into MP3 or WMA format. Once these files are stored on your computer you can easily copy them to your player.

Connect the computer to your player using the supplied USB cable.

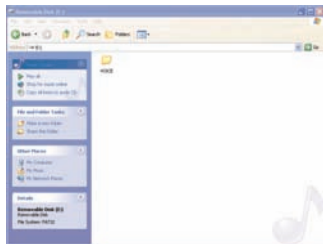
Press the Power/Stop button to turn the unit on.

A "Removable Disk" window will automatically pop up on your computer screen.

To add more files and songs to your player simply drag and drop MP3, WMA or WAV files from anywhere on your computer into the "Removable Disk" window.

TRANSFER MODE

USB Connected
Ready



IMPORTANT: A WMA file with DRM will not play back if you directly drag and drop it into the "Removable Disk" window. You must use MMJB or Windows Media Player to transfer copy protected files.

When you are finished, see the Safely Remove Hardware procedure on the next page before disconnecting the player.

SAFELY REMOVE HARDWARE

SAFELY REMOVING YOUR PLAYER FROM THE COMPUTER

NOTE: To avoid damage to your player or data loss, always follow the procedure listed below before disconnecting the USB cable from your computer or disconnecting the player from the USB cable.

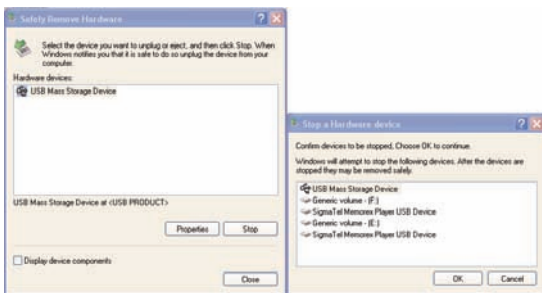
Using your mouse, double click the "Safely Remove Hardware" icon on the task bar.



From the "Safely Remove Hardware" window, select "USB Mass Storage Device" and click the "Stop" button. The "Stop a Hardware Device" window will pop up as shown below. Click "OK". When the "Safe to Remove Hardware" window is displayed, you may remove the player from the USB cable or remove the USB cable from the computer.

NOTE:

- If the "Safely Remove Hardware" icon is not displayed on the task bar, please double click on My Computer. Right click on "Removable Disk" and left click on "Eject". Then it will be safe to remove the player from the computer.
- The "Safely Remove Hardware" procedure is not necessary for Win98 and Win98SE users.



INSTALLING MUSICMATCH JUKEBOX

MUSICMATCH JUKEBOX INSTALLATION (PC ONLY):

1. Insert the Installation CD-ROM into the CD Drive, the auto-run program will display the Main Menu. Click "Install Musicmatch Jukebox".
NOTE: If the Main Menu Window does not appear, double click "Memorex Startup CD" Application file in the installation CD in order to open the Main Menu.
2. Follow the online prompts to complete the installation.

DOWNLOADING TRACKS TO THE UNIT USING MUSICMATCH JUKEBOX (MMJB)

Please follow these instructions for transferring tracks from the computer to the unit.

NOTE: WMA DRM protected files will not play if you use the 'drag and drop' procedure. You must follow the procedure below to play WMA DRM files on your MMP8560.

1. Install the MMJB Software as described above.
2. Turn the unit ON, then connect the USB cable to the unit and the USB port of the computer. "Transfer Mode" will be displayed on the LCD when it is properly connected.
3. Open MMJB and click "Portable Device" on the left hand side of the window. The "Portable Device Manager" window will pop up. MMJB may need some time while synchronizing with the device.
4. You may now either:
 - a. Click the "Add" button and search for tracks or Playlists. Highlight the desired tracks or Playlists and click "Add".
 - b. Drag and drop tracks into the Portable Device Manager window from anywhere on your computer or from the MMJB Library.
5. The tracks are now properly transferred to the player. Follow the "Safely Remove Hardware" procedure and unplug the unit from the computer. Insert the headphones and listen to your music.

INSTALLING MUSICMATCH JUKEBOX (CONTINUED)

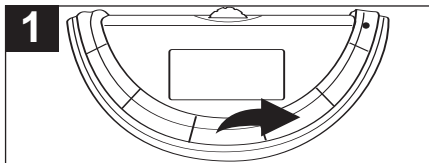
RECORDING TRACKS FROM A CD TO A COMPUTER USING MUSICMATCH JUKEBOX (MMJB)

1. Click the "Copy From CD" button on the left hand side of the window to open the Recorder window.
2. Insert an audio CD into your CD-ROM drive.
(CD Lookup will read your CD and attempt to fill in Album, Artist, and Track (Tag) information if the computer connected to the internet)
3. Tick the boxes next to the tracks that you wish to record.
4. Click the "Start Copy" button. (The files will be recorded as MP3 files at 128Kbps). MMJB will start to record from the audio CD, to the digital file format you choose, and place recorded files into the Library.

Important Note: For further details please consult the "Musicmatch User Guide" located on the Main Menu of the Installation CD.

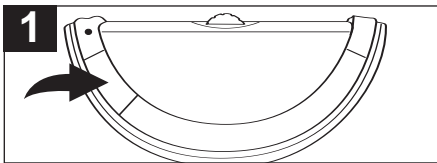
OPERATION

TURNING THE POWER ON/OFF



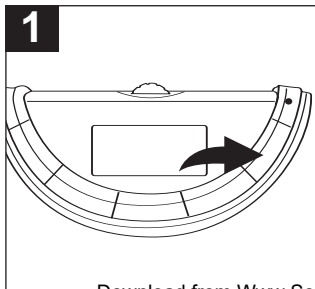
Turn the unit on by pressing the Power/Stop button; the Memorex start screen will appear in the display temporarily. Then the Music Player menu will appear in the display. To turn the unit off, press and hold the Power/Stop button; "Hold Down To Power Off" will appear in the display. The unit will turn off after it counts up from one to three. Do not release the Power/Stop button until the unit turns off.

LOCK SWITCH



Slide the LOCK switch to the Lock position; the lock indicator will appear in the display and no buttons will function. This is useful when you do not want the station/track changed by accidentally pressing a button. Slide the LOCK switch to the Unlock position to cancel the Lock function. **NOTE:** If you attempt to turn the power on while the LOCK switch is in the Lock position, the unit will show "LOCKED" and the lock indicator and then turn off.

EQ—MUSIC PLAYER ONLY

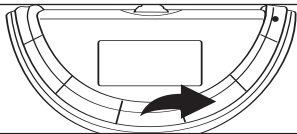


While in the Music Player menu, press **and hold** the EQ/ > button until the EQ setting is highlighted in the display. Within two seconds, repeatedly press the EQ/ > button to select the desired EQ setting (Normal, Rock, UBass (Ultra Bass), Jazz, Classical or Pop). Wait two seconds without pressing a button to confirm the setting. The selected EQ setting will appear at the bottom left of the display when playing tracks/files.

OPERATION (CONTINUED)

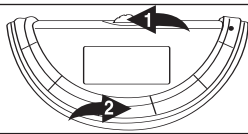
TO LISTEN TO THE FM RADIO

1



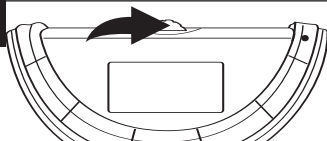
Turn the unit on by pressing the Power/Stop button; the Memorex start screen will appear in the display temporarily. Then the Music Player menu and the MP3/WMA's track information will appear in the display.

2



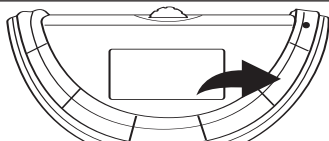
Press the Navigation control **1**; the Main Menu will appear. Within six seconds, push the Navigation control **1** to the left or right until the FM Tuner is highlighted, then press the PLAY/PAUSE **▶||** button **2** to select it.

3



Repeatedly push and release the Navigation control to the left (Tuning Down) or right (Tuning Up) to tune a station. For rapid search tuning, push and hold the Navigation control to the left or right for one second, then release; the unit will automatically search and stop on the next strongest station.

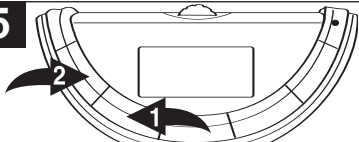
4




When a station is broadcasting in stereo, "STEREO" will appear in the display. Press the EQ/ > button to listen in mono, "STEREO" will disappear from the display. Press the EQ/ > button again to return to stereo. If the station is not strong enough or it is not broadcasting in stereo, "Stereo" will not appear.

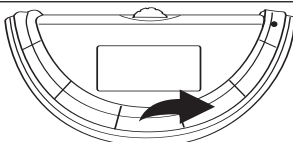
OPERATION (CONTINUED)

5



Press the VOLUME + /-  buttons to adjust the volume.

6



To turn the unit off, press and hold the Power/Stop button; “Hold Down To Power Off” will appear in the display. The unit will turn off after it counts up from one to three. Do not release the Power/Stop button until the unit turns off.

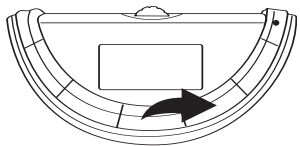
ANTENNA

FM—The headphones act as an antenna for FM. Extend the headphone wire for best FM reception.

OPERATION (CONTINUED)

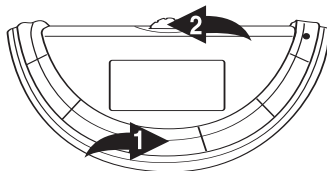
TO MANUALLY SET A STATION INTO MEMORY

1



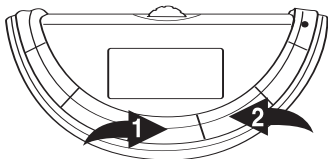
Turn the unit on by pressing the Power/Stop button; select the FM Tuner mode and tune a station as described on pages 18 and 19.

2



Press the PLAY/PAUSE ►|| button ❶; "STORE" will appear in the display. Push the Navigation control ❷ towards the left or right to select a preset number ("Channel 01" to "Channel 10").

3



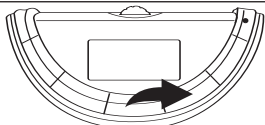
When the desired memory number appears, press the PLAY/PAUSE ►|| button ❶ to store the preset; "STORE" will disappear from the display and the station will be set into memory.

To cancel and not store the Station, press the Power/Stop button ❷; "Store" will disappear from the display.

OPERATION (CONTINUED)

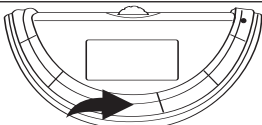
TO AUTOMATICALLY SET STATIONS INTO MEMORY

1



While in the FM radio mode, make sure the PRESET indicator is not in the display. If it is, press the Power/Stop button to clear it.

2

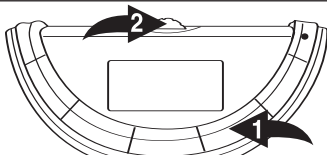


Press and hold the PLAY/PAUSE ►|| button until "AUTO SCAN" appears in the display. The unit will automatically store the ten next strong stations into memory. New FM Stations will overwrite previous presets.

NOTE: If less than ten stations have been scanned into the memory, the memory will keep at a frequency with 87.5MHz.

TO RECEIVE MEMORY PRESETS

1

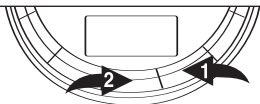


Press the Power/Stop button ❶; "PRESET" will appear in the display. Push the Navigation control ❷ towards the left or right to select a preset channel. Press the Power/Stop button ❶ to exit the preset mode; the "PRESET" indicator will disappear from the display.

OPERATION (CONTINUED)

TO LISTEN TO MP3s/WMA's/WAVs

1



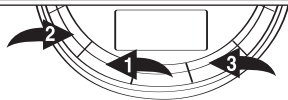
Turn the unit on by pressing the Power/Stop button **1**; the Memorex start screen will appear in the display temporarily. Then the Music Player menu will appear and the MP3/WMA's track information will appear in the display. Press the PLAY/PAUSE **▶||** button **2** to start playback; the playback MP3/WMA file's information will appear/scroll across the display.

2



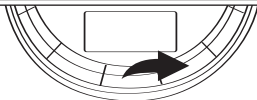
If the unit is in a mode other than the Music Player menu, press the Navigation control **1**; the Main menu will appear in the display. Within six seconds, push the Navigation control **1** towards the left or right until Play Now/Now Playing is highlighted, then press the PLAY/PAUSE **▶||** button **2** to select it. Playback will start automatically.

3



Set the Equalizer as shown on page 17. Press the VOLUME + **1**/- **2** buttons to adjust the volume. To stop playback, press the Power/Stop button **1**; the Stop indicator will appear.

4



To turn the unit off, press and hold the Power/Stop button; "Hold Down To Power Off" will appear in the display. The unit will turn off after it counts up from one to three. Do not release the Power/Stop button until the unit turns off.

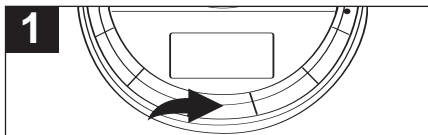
NOTE:

- See pages 9 through 16 for information on uploading MP3, WMA and WAV files to this unit.

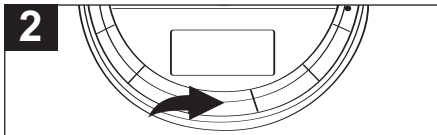
NOTE (AUTO RESUME): Each time you exit the Music Player mode or turn the unit off, when the unit is turned back on or you enter the Music Player mode again, this unit will resume at the beginning of the last track which was playing before turning the power off or changing mode. To cancel resume, press the Power/Stop button once while in Music Player Stop mode; the unit will return to showing the first file's information. When in the Random or Random Repeat mode (see page 26), the unit will not show the first file's information when you press the Power/Stop button. In the Playlist or Playlist Repeat mode, it will return to show the first selected file's information.

OPERATION (CONTINUED)

TO PAUSE PLAYBACK

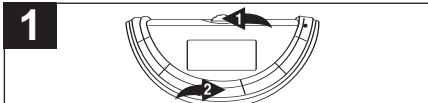


During playback, if you wish to pause the file momentarily, press the PLAY/PAUSE ►|| button; playback will pause, the Pause indicator will appear and the timer will stop counting.

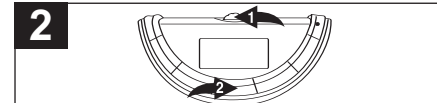


Press the PLAY/PAUSE ►|| button again to resume playback; the sound will return, the Play indicator will appear and the timer will start counting again.

TO SELECT/BROWSE THROUGH THE FILES



Press the Navigation control ❶; the Main Menu will appear. Push the Navigation control ❶ towards the left or right to Browse then press the PLAY/PAUSE ►|| button ❷ to select it; the Root folder contents will appear.



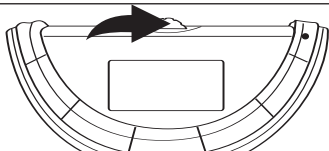
Repeatedly push the Navigation control ❶ towards the left or right to select a file/folder. If a folder is selected, press the PLAY/PAUSE ►|| button ❷ to open the folder, then push the Navigation control ❶ towards the left or right to select a file. When the desired file is selected press the PLAY/PAUSE ►|| button ❷ to start playing the selected file.

NOTE: To return to the Root folder, press the Power/Stop button.

OPERATION (CONTINUED)

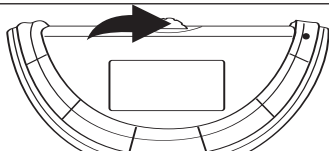
FORWARD/REVERSE SKIP

1



During playback, push the Navigation control to the right to advance the player to the beginning of the next file. Push the Navigation control to the right repeatedly to advance the player to higher-numbered files.

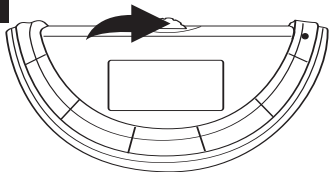
2



During playback, push the Navigation control to the left to move the player back to the beginning of the currently playing file. Push the Navigation control to the left repeatedly to move the player back to lower-numbered files.

HIGH-SPEED MUSIC SEARCH

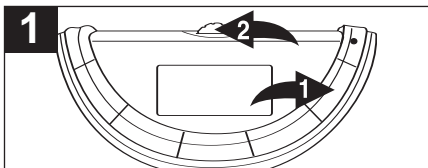
1


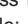


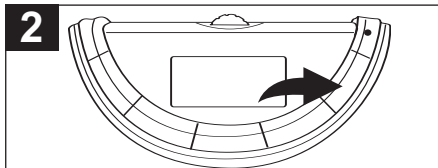
During playback, push and hold the Navigation control towards the right or the left to move the player forward or backward within a file to locate a specific musical passage. The player will move forward or backward at high speed as long as the control is held. When you release the control, normal playback will resume.

OPERATION (CONTINUED)

TO REPEAT A FILE

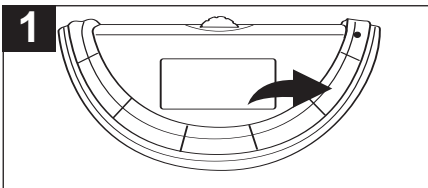



To repeat a single file, press the EQ/ > button **1** once while playing a file; the Repeat One indicator  will appear in the display. Push the Navigation control  towards the left or right to select the specific track that you wish to repeat.

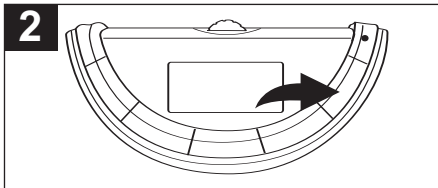


The specific track you selected will be repeated continuously. To cancel Repeat playback, press the EQ/ > button repeatedly until the play mode indicators disappear from the display.

TO REPEAT ALL FILES



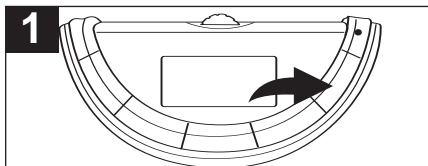
To repeat all files, press the EQ/ > button twice while playing a file; the Repeat All indicator  will appear in the display.




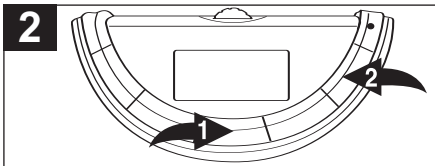
All tracks on the player will be repeated continuously. To cancel Repeat playback, press the EQ/ > button repeatedly until the play mode indicators disappear from the display.




OPERATION (CONTINUED)

TO RANDOMLY PLAY ALL FILES

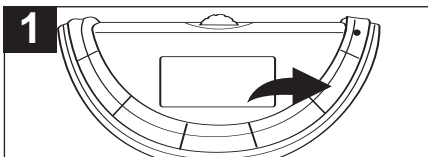



To randomly play all the files and then stop, press the EQ/ > button three times while in the Stop mode; the Random indicator  will appear in the display.

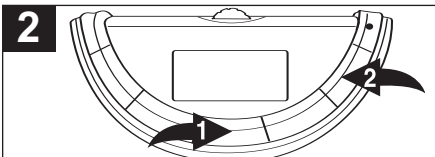





Press the PLAY/PAUSE  button  to start playback; the unit will play all the tracks in random order. When all the tracks have been played, the unit will stop. To cancel Random playback, press the EQ/ > button  repeatedly until the play mode indicators disappear from the display.

TO RANDOMLY PLAY ALL THE FILES CONTINUOUSLY



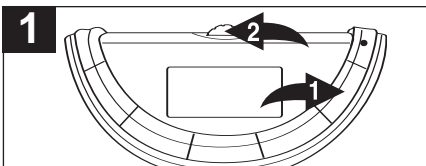
To randomly play all the files continuously, press the EQ/ > button four times while in the Stop mode; the Random Repeat indicator  will appear in the display.



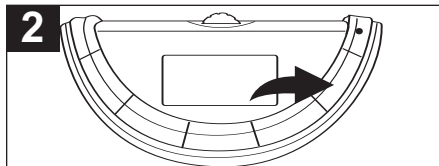
Press the PLAY/PAUSE  button  to start playback; the unit will play all the tracks in random order continuously. To cancel Random Repeat playback, press the EQ/ > button  repeatedly until the play mode indicators disappear from the display.

OPERATION (CONTINUED)

PLAYING A PLAYLIST (A playlist must be be programmed first, see pg. 28)

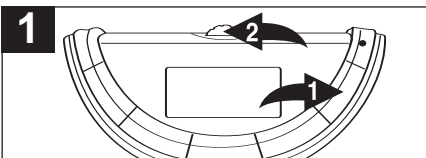


Press the EQ/ > button ❶ five times while playing a file; "P" will appear in the display. Push the Navigation control ❷ towards the right to start playing the first track of the playlist.

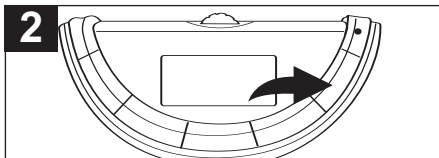


The unit will play the playlist once and then stop. To cancel Playlist playback, press the EQ/ > button repeatedly until the play mode indicators disappear from the display.

REPEATEDLY PLAYING A PLAYLIST (A playlist must be programmed first, see pg. 28)



Press the EQ/ > button ❶ six times while playing a file; "P" and the Repeat indicator ❷ will appear in the display. Push the Navigation control ❸ towards the right to start playing the first track of the playlist.

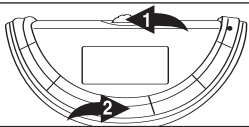


The unit will play the playlist repeatedly. To cancel Repeat Playlist playback, press the EQ/ > button repeatedly until the play mode indicators disappear from the display.

OPERATION (CONTINUED)

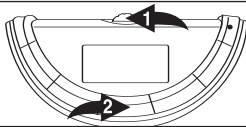
CREATING A PLAYLIST

1



Press the Navigation control **1**; the Main Menu will appear. Push the Navigation control **1** towards the left or right to Browse then press the PLAY/PAUSE **2** button to select it; the Root folder contents will appear.

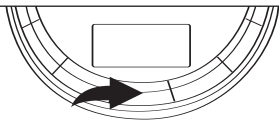
2



Repeatedly push the Navigation control **1** towards the left or right to select a file/folder. If a folder is selected, press the PLAY/PAUSE **2** button to open the folder, then push the Navigation control **1** towards the left or right to select a file.

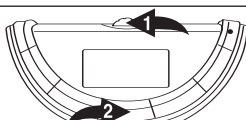
NOTE: To return to the Root folder, press the Power/Stop button.

3



When the desired file is selected, press and hold the PLAY/PAUSE **2** button to add it to the playlist; a program number will appear at the left side of the file (i.e. "01" is the first program file of the playlist, "02" the second file, etc.). Press the PLAY/PAUSE **2** button again to confirm and the program number will disappear.

4



Repeat steps 2 and 3 to add more files.

NOTE: To exit the Browse menu and return to the Main menu, press the Navigation control until the Main menu appears in the display. See previous page for how to play the playlist.

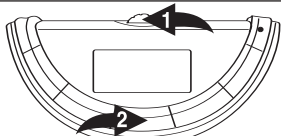
NOTE:

- You can only program the same file into the playlist once.

OPERATION (CONTINUED)

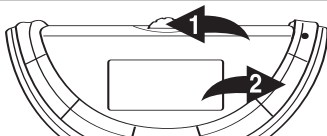
TO VIEW/CLEAR THE PLAYLIST

1



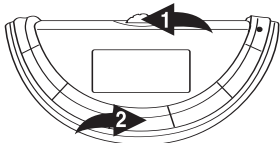
Press and hold the Navigation control ❶ until the Setting Menu appears in the display. Push the Navigation control ❶ towards the right repeatedly to Playlist and then press the PLAY/PAUSE ►|| button ❷ to select it; the Playlist will appear.

2



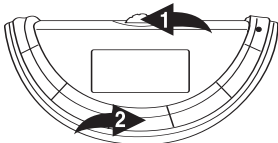
To clear a file, select the file to delete by pushing the Navigation control ❶ to the left or right until the file is highlighted, then press the EQ/ > button ❷. To clear all files in the playlist, after entering the playlist, press the EQ/ > button ❷.

3



Push the Navigation control ❶ towards the left or right to select CLEAR ITEM or CLEAR LIST, then press the PLAY/PAUSE ►|| button ❷.

4

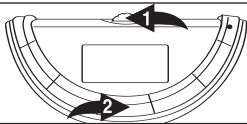


Push the Navigation control ❶ towards the left or right to select NO or YES, then press the PLAY/PAUSE ►|| button ❷ to confirm. If you select YES and confirm, the file/files in the playlist will then be deleted; if you select NO and confirm, the file/files will not be deleted.

OPERATION (CONTINUED)

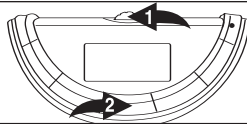
DELETING A FILE

1



Press the Navigation control **1**; the Main Menu will appear. Push the Navigation control **1** towards the left or right to Browse then press the PLAY/PAUSE **2** button **2** to select it; the Root folder contents will appear.

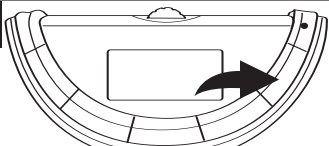
2



Repeatedly push the Navigation control **1** towards the left or right to select a file/folder. If a folder is selected, press the PLAY/PAUSE **2** button **2** to open the folder, then push the Navigation control **1** towards the left or right to select a file.

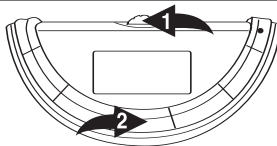
NOTE: To return to the Root folder, press the Power/Stop button.

3



After the file is selected, press the EQ / > button.

4

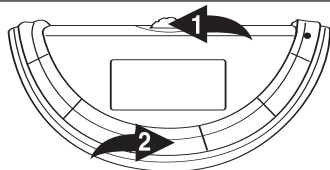


Push the Navigation control **1** towards the left or right to select NO or YES, then press the PLAY/PAUSE **2** button **2** to confirm. If you select YES and confirm, the file will then be deleted; if you select NO and confirm, the file will not be deleted.

OPERATION (CONTINUED)

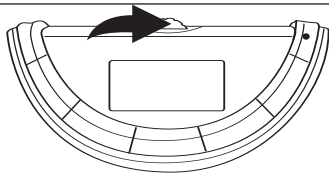
TO SET THE CONTRAST

1



Press **and hold** the Navigation control ❶ until the Setting menu appears in the display. Scroll to Contrast by pushing the Navigation control ❶ towards the left or right, then press the PLAY/PAUSE ▶|| button ❷ to select it; the Contrast setting will appear.

2

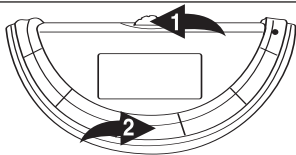


Push the Navigation control towards the left or right to set the desired contrast. Press the Navigation control twice or wait a few seconds to exit the menu.

OPERATION (CONTINUED)

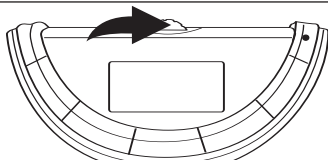
TO SET THE BACKLIGHT

1



Press **and hold** the Navigation control ❶ until the Setting menu appears in the display. Scroll to Backlight by pushing the Navigation control ❶ towards the left or right and then press the PLAY/PAUSE ►|| button ❷ to select it; the Backlight setting will appear.

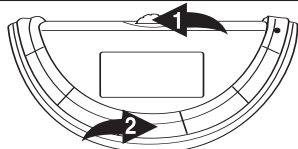
2



Set the desired backlight time (Always Off, 5 seconds, 10 seconds, 15 seconds or Always On) by pushing the Navigation control to the left or right. This is the time the backlight will be lit before turning off when no buttons are pressed. Select Always Off and the backlight will not light. Press the Navigation control to set and return to the settings menu.

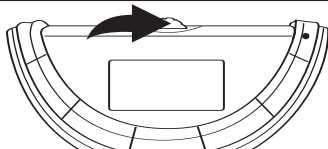
TO SET THE PLAY TIMER

1



Press **and hold** the Navigation control ❶ until the Setting menu appears in the display. Scroll to Play Timer by pushing the Navigation control to the left or right ❶ then press the PLAY/PAUSE ►|| button ❷ to select it; the Play Timer setting will appear.

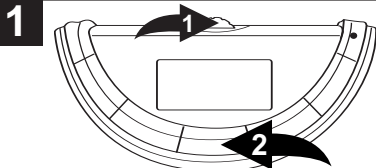
2



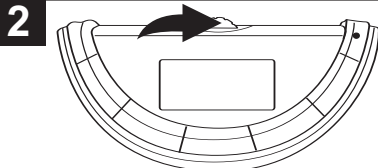
Scroll by pushing the Navigation control towards the left or right to select a desired play timer setting (Elapsed or Remaining). Press the Navigation control to set and return to the settings menu.

OPERATION (CONTINUED)

TO SET THE POWER SAVINGS

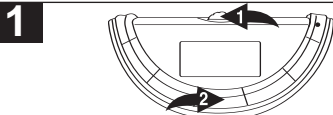


Press **and hold** the Navigation control **1** until the Setting menu appears in the display. Scroll to Power Savings by pushing the Navigation control **1** towards the left or right then press the PLAY/PAUSE **2** to select it; the Power Savings setting will appear.



Push the Navigation control towards the left or right to select a desired Power Savings setting (Disable, 1 minute, 3 minutes, 5 minutes). This is the time the unit will stay on if it is not playing and no buttons have been pressed for the set time. Press the Navigation control to set and return to the settings menu.

TO VIEW THE SYSTEM INFO



Press **and hold** the Navigation control **1** until the Settings menu appears in the display. Scroll to System Info by pushing the Navigation control **1** towards the left or right then press the PLAY/PAUSE **2** to select it; the System Information will appear. Press the Navigation control **1** to exit System Info, the Settings menu will then reappear.

TROUBLESHOOTING GUIDE

If you experience a problem with this unit, check the chart below before calling for service.

SYMPTOM	CAUSE	SOLUTION
Unit will not turn on.	Dead battery, or not installed properly.	Replace battery and install properly.
	Lock switch is in the Lock position.	Slide switch to the Unlock position.
No sound.	Headphones are not inserted.	Insert headphones.
	Volume is set too low.	Raise the volume.
	The MP3 or WMA files are corrupted.	Download uncorrupted files.
FM distorted.	Station not tuned.	Retune station and extend headphone wire.
Download Failure.	Damaged USB cable.	Replace cable.
The computer is not recognizing the player.	The USB cable is not securely connected.	Make sure USB cable is securely connected.
	Driver is not installed or computer is not compatible.	Install driver and/or see pages 9 through 14 for compatibility.
WMA files with DRM cannot playback.	Incorrect downloading methods.	See pages 15 through 16 to download WMA files with DRM.

TROUBLESHOOTING GUIDE (CONTINUED)

SYMPTOM	CAUSE	SOLUTION
No buttons work.	The Lock feature is activated.	Slide the Lock switch to the unlock position.
	Unit needs to be reset or firmware needs to be updated.	Reset unit and/or update firmware, see pages 36-37.
Unit acting erratically.	Unit needs to be reset or firmware needs to be updated.	Reset unit and/or update firmware, see pages 36-37.
WMA files with DRM cannot playback.	Incorrect downloading methods.	See pages 15-16 to download WMA files with DRM.

FORMATTING THE PLAYER

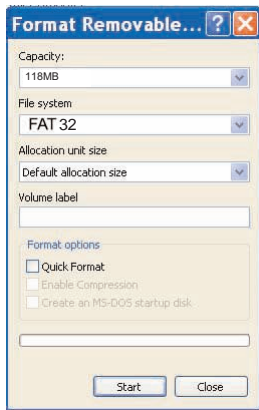
WARNING! Do not format this player unless it stops working and you are instructed to do so by technical support personnel.

Formatting the Player

1. Use the USB cable to connect the player and the computer.
2. Double click on My Computer, right click the "Removable Disk" and left click on "Format".
3. At the "Format" window, select "FAT32" from the file system pull down menu, then click start to format the unit (see figure to the right).

NOTE: Make sure you have selected the "FAT32" at the file system pull down menu, otherwise after formatting, the player will not work properly.

4. Click OK to confirm and the player will start to format.
5. When finished, click "Close" to close the Format window



UPDATING THE FIRMWARE

WARNING! Do not update the firmware unless you are experiencing problems with your digital audio device. Incorrect or faulty firmware installation will cause the player to stop functioning.

1. Download the updated firmware at www.memorexelectronics.com.
2. Unzip the file, then double click setup.exe in the Desktop folder to install the software to your computer.
3. Connect the player to the computer using the supplied USB cable and the installation screen will appear. (If the installation screen does not appear, unplug the USB cable and turn off the unit). Connect to the computer again and press and hold the Power/Stop button until the installation screen appears.
4. Follow the on-screen instructions to install the driver.
5. When finished, click START and locate the newly installed software "Memorex Audio Player" and select "Firmware Download".

RESETTING THE UNIT

If the unit acts erratically, reset the unit by removing the battery for a few seconds and then reinserting.

SPECIFICATIONS

Audio	Frequency Range	20Hz – 20KHz
	Headphones Output	20mW, 16ohm (Max. Vol)
	S/N Ratio	85db (MP3)
File Support	MP3	MPEG 1/2/2.5 Layer 3
	WMA	Windows Media Audio (WMA file with DRM)
	WAV	ADPCM encoding
	Bit Rate	8kbps – 320kbps
	Tag Info	ID3 Tag
FM Tuner	FM Frequency Range	87.5MHz–108MHz
	Antenna	Headphones/Earphones Cord Antenna
General	Dimension	83 x 40 x 40 mm
	Weight	38g (Without battery)
	Battery	1 x AAA battery
	LCD	Full Graphic with Backlight
	Language	English
	USB	USB 2.0
	Built-in Memory	128MB
	Max. Playtime	Approx. 18 hours (128kps, MP3)
	Supported OS	Win ME, 2000, XP and Mac OSX Win 98SE (Driver is required)
	Operating Temperature	23° F to 104° F (-5° C to 40° C)

Specifications are subject to change without notice.

**FOR FIRMWARE UPGRADE, PLEASE VISIT OUR WEBSITE AT
WWW.MEMOREXELECTRONICS.COM
TO CHECK IF THERE IS NEW FIRMWARE AVAILABLE.**

**FOR ADDITIONAL SET-UP OR OPERATING ASSISTANCE,
PLEASE VISIT OUR WEBSITE AT
WWW.MEMOREXELECTRONICS.COM
OR CONTACT CUSTOMER SERVICE AT (954) 660-7100.**

**PLEASE KEEP ALL PACKAGING MATERIAL FOR AT LEAST 90
DAYS IN CASE YOU NEED TO RETURN THIS PRODUCT TO YOUR
PLACE OF PURCHASE OR TO MEMOREX.**

**FOR PARTS AND ACCESSORIES, CONTACT FOX INTERNATIONAL
AT 1-800-321-6993.**

Memcorp, Inc.
Weston, FL
Printed in China

Visit our website at www.memorexelectronics.com

Free Manuals Download Website

<http://myh66.com>

<http://usermanuals.us>

<http://www.somanuals.com>

<http://www.4manuals.cc>

<http://www.manual-lib.com>

<http://www.404manual.com>

<http://www.luxmanual.com>

<http://aubethermostatmanual.com>

Golf course search by state

<http://golfingnear.com>

Email search by domain

<http://emailbydomain.com>

Auto manuals search

<http://auto.somanuals.com>

TV manuals search

<http://tv.somanuals.com>