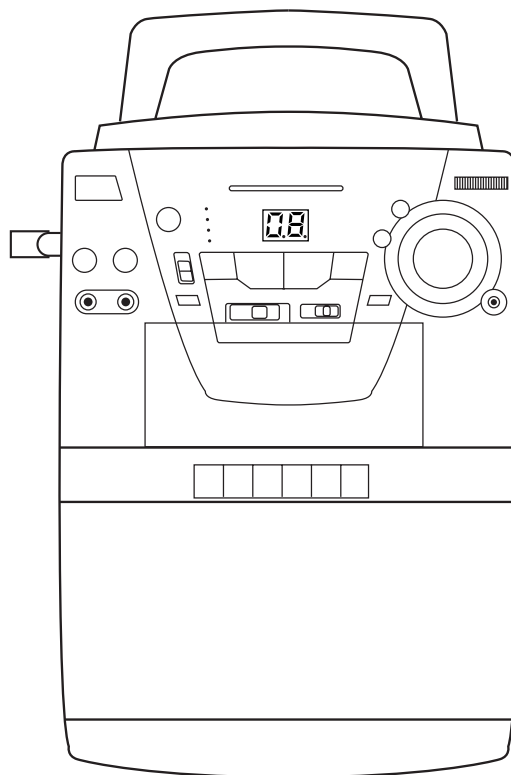




***PORTABLE CD/CD+G KARAOKE  
SYSTEM WITH AM/FM RADIO AND  
CASSETTE RECORDER***

***MODEL: MKS2461***

**BEFORE OPERATING THIS PRODUCT, PLEASE READ THESE  
INSTRUCTIONS COMPLETELY.**



**OPERATING INSTRUCTIONS**

**Dear Customer,**

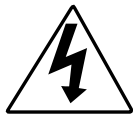
Please read this manual thoroughly before operating the unit to become more familiar with it and obtain the performance that will bring you continued enjoyment for many years. Keep these instructions handy for future reference.

**PLEASE KEEP ALL PACKAGING MATERIAL FOR AT LEAST 90 DAYS IN CASE YOU NEED TO RETURN THIS PRODUCT TO YOUR PLACE OF PURCHASE OR MEMOREX.**

For future reference, record the serial number of the unit printed on the rear of the cabinet.

Serial Number \_\_\_\_\_

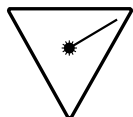
	<b>CAUTION</b> <b>RISK OF ELECTRIC SHOCK</b> <b>DO NOT OPEN</b>	
<b>CAUTION:</b> TO REDUCE THE RISK OF ELECTRIC SHOCK, DO NOT REMOVE COVER (OR BACK). NO USER-SERVICEABLE PARTS INSIDE. REFER SERVICING TO QUALIFIED SERVICE PERSONNEL.		

**DANGEROUS VOLTAGE**

The lightning flash with arrowhead symbol, within an equilateral triangle is intended to alert the user to the presence of uninsulated dangerous voltage within the product's enclosure that may be of sufficient magnitude to constitute a risk of electric shock to persons.

**ATTENTION**

The exclamation point within an equilateral triangle is intended to alert the user to the presence of important operating and maintenance (servicing) instructions in the literature accompanying the appliance.

**DANGER:**

Invisible and hazardous laser radiation when open and interlock failed or defeated. Avoid direct exposure to beam.

**FCC WARNING:**

This equipment may generate or use radio frequency energy. Changes or modifications to this equipment may cause harmful interference unless the modifications are expressly approved in the instruction manual. The user could lose the authority to operate this equipment if an unauthorized change or modification is made.

**LASER SAFETY:** This unit employs a laser. Only qualified service personnel should attempt to service this device due to possible eye injury.

**CAUTION:** USE OF CONTROLS, ADJUSTMENTS OR PERFORMANCE PROCEDURE HEREIN MAY RESULT IN HAZARDOUS RADIATION EXPOSURE.

**INFORMATION**

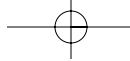
This equipment has been tested and found to comply with the limits for a Class B digital device, pursuant to Part 15 of the FCC Rules. These limits are designed to provide reasonable protection against harmful interference in a residential installation. This equipment generates, uses, and can radiate radio frequency energy and, if not installed and used in accordance with the instructions, may cause harmful interference to radio communications. However, there is no guarantee that interference will not occur in a particular installation. If this equipment does cause harmful interference to radio or television reception, which can be determined by turning the equipment off and on, the user is encouraged to try to correct the interference by one or more of the following measures:

- Reorient or relocate the receiving antenna.
- Increase the separation between the equipment and receiver.
- Connect the equipment into an outlet on a circuit different from that to which the receiver is connected.
- Consult the dealer or an experienced radio/TV technician for help.

**WARNING: TO PREVENT FIRE OR SHOCK HAZARD, DO NOT EXPOSE THIS UNIT TO RAIN OR MOISTURE.**

**SURGE PROTECTORS:**

It is recommended to use a surge protector for AC connection. Lightning and power surges ARE NOT covered under warranty for this product.



### Dear Customer:

Selecting fine audio equipment such as the unit you've just purchased is only the start of your musical enjoyment. Now it's time to consider how you can maximize the fun and excitement your equipment offers. This manufacturer and the Electronic Industries Association's Consumer Electronics Group want you to get the most out of your equipment by playing it at a safe level. One that lets the sound come through loud and clear without annoying blaring or distortion-and, most importantly, without affecting your sensitive hearing. Sound can be deceiving. Over time your hearing "comfort level" adapts to higher volumes of sound. So what sounds "normal" can actually be loud and harmful to your hearing. Guard against this by setting your equipment at a safe level BEFORE your hearing adapts.

### To establish a safe level:

- Start your volume control at a low setting.
- Slowly increase the sound until you can hear it comfortably and clearly, and without distortion.

### Once you have established a comfortable sound level:

- Set the dial and leave it there.

Taking a minute to do this now will help to prevent hearing damage or loss in the future. After all, we want you listening for a lifetime.

### We Want You Listening For A Lifetime

Used wisely, your new sound equipment will provide a lifetime of fun and enjoyment. Since hearing damage from loud noise is often undetectable until it is too late, this manufacturer and the Electronic Industries Association's Consumer Electronics Group recommend you avoid prolonged exposure to excessive noise. This list of sound levels is included for your protection.

### Decibel

<u>Level</u>	<u>Example</u>
30	Quiet library, soft whispers
40	Living room, refrigerator, bedroom away from traffic
50	Light traffic, normal conversation, quiet office
60	Air conditioner at 20 feet, sewing machine
70	Vacuum cleaner, hair dryer, noisy restaurant
80	Average city traffic, garbage disposals, alarm clock at two feet

### THE FOLLOWING NOISES CAN BE DANGEROUS UNDER CONSTANT EXPOSURE:

90	Subway, motorcycle, truck traffic, lawn mower
100	Garbage truck, chain saw, pneumatic drill
120	Rock band concert in front of speakers, thunderclap
140	Gunshot blast, jet engine
180	Rocket launching pad

Information courtesy of the Deafness Research Foundation.



# SAFETY INSTRUCTIONS

Before using the unit, be sure to read all operating instructions carefully. Please note that these are general precautions and may not pertain to your unit. For example, this unit may not have the capability to be connected to an outdoor antenna.

## 1. READ INSTRUCTIONS

All the safety and operating instructions should be read before the product is operated.

## 2. RETAIN INSTRUCTIONS

The safety and operating instructions should be retained for future reference.

## 3. HEED WARNINGS

All warnings on the product and in the operating instructions should be adhered to.

## 4. FOLLOW INSTRUCTIONS

All operating and use instructions should be followed.

## 5. CLEANING

Unplug this product from the wall outlet before cleaning. Do not use liquid cleaners or aerosol cleaners. Use a damp cloth for cleaning.

## 6. ATTACHMENTS

Do not use attachments not recommended by the product's manufacturer as they may cause hazards.

## 7. WATER AND MOISTURE

Do not use this product near water- for example, near a bathtub, washbowl, kitchen sink, or laundry tub, in a wet basement, or near a swimming pool.

## 8. ACCESSORIES

Do not place this product on an unstable cart, stand, tripod, bracket, or table. The product may fall, causing serious injury and serious damage to the product. Use only with a cart, stand, tripod, bracket, or table recommended by the manufacturer or sold with the product. Any mounting of the product should follow the manufacturer's instructions, and should use a mounting accessory recommended by the manufacturer.

PORTABLE CART WARNING  
(symbol provided by RETAC)



- 8A. An appliance and cart combination should be moved with care. Quick stops, excessive force, and uneven surfaces may cause the appliance and cart combination to overturn.

## 9. VENTILATION

Slots and openings in the cabinet and in the back or bottom are provided for ventilation and to ensure reliable operation of the product and to protect it from overheating. These openings must not be blocked or covered. The openings should never be blocked by placing the product on a bed, sofa, rug, or other similar surface. This product should never be placed near or over a radiator or heat source. This product should not be placed in a built-in installation such as a bookcase or rack unless proper ventilation is provided or the manufacturer's instructions have been adhered to.

## 10. POWER SOURCES

This product should be operated only from the type of power source indicated on the marking label. If you are not sure of the type of power supply to your home, consult your appliance dealer or local power company. For products intended to operate from battery power, or other sources, refer to the operating instructions.

## 11. GROUNDING OR POLARIZATION

This product is equipped with a polarized alternating-current line plug (a plug having one blade wider than the other). This plug will fit into the power outlet only one way. This is a safety feature. If you are unable to insert the plug fully into the outlet, try reversing the plug. If the plug should still fail to fit, contact your electrician to replace your obsolete outlet. Do not defeat the safety purpose of the polarized plug.

## 12. POWER-CORD PROTECTION

Power-supply cords should be routed so that they are not likely to be walked on or pinched by items placed upon or against them, paying particular attention to cords at plugs, convenience receptacles, and the point where they exit from the appliance.

## 13. LIGHTNING

To protect your product from a lightning storm, or when it is left unattended and unused for long periods of time, unplug it from the wall outlet and disconnect the antenna or cable system. This will prevent damage to the product due to lightning and power-line surges.

## 14. POWER LINES

An outside antenna system should not be located in the vicinity of overhead power lines or other electric light or power circuits, or where it can fall into such power lines or circuits. When installing an outside antenna system, extreme care should be taken to keep from touching such power lines or circuits as contact with them might be fatal.

## 15. OVERLOADING

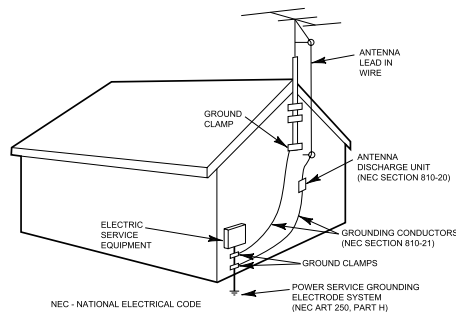
Do not overload wall outlets and extension cords as this can result in a risk of fire or electric shock.

## 16. OBJECT AND LIQUID ENTRY

Never push objects of any kind into this product through openings as they may touch dangerous voltage points or short out parts that could result in fire or electric shock. Never spill or spray any type of liquid on the product.

## 17. OUTDOOR ANTENNA GROUNDING

If an outside antenna is connected to the product, be sure the antenna system is grounded so as to provide some protection against voltage surges and built-up static charges. Section 810 of the National Electric Code, ANSI/NFPA 70, provides information with respect to proper grounding of the mast and supporting structure, grounding of the lead-in wire to an antenna discharge product, size of grounding conductors, location of antenna discharge product, connection to grounding electrodes, and requirements for grounding electrode.



EXAMPLE OF ANTENNA GROUNDING AS PER  
NATIONAL ELECTRICAL CODE

## 18. SERVICING

Do not attempt to service this product yourself as opening or removing covers may expose you to dangerous voltage or other hazards. Refer all servicing to qualified service personnel.

## 19. REPLACEMENT PARTS

When replacement parts are required, be sure the service technician uses replacement parts specified by the manufacturer or those that have the same characteristics as the original part. Unauthorized substitutions may result in fire, electric shock or other hazards.

## 20. SAFETY CHECK

Upon completion of any service or repairs to this product, ask the service technician to perform safety checks to determine that the product is in proper operating condition.

## 21. WALL OR CEILING MOUNTING

The product should be mounted to a wall or ceiling only as recommended by the manufacturer.

## 22. DAMAGE REQUIRING SERVICE

Unplug the product from the wall outlet and refer servicing to qualified service personnel under the following conditions:

- When the power-supply cord or plug is damaged.
- If liquid has been spilled, or objects have fallen into the product.
- If the product has been exposed to rain or water.
- If the product does not operate normally by following the operating instructions. Adjust only those controls that are covered by the operating instructions, as an adjustment of other controls may result in damage and will often require extensive work by a qualified technician to restore the product to its normal operation.
- If the product has been dropped or the cabinet has been damaged.
- When the product exhibits a distinct change in performance - this indicates a need for service.

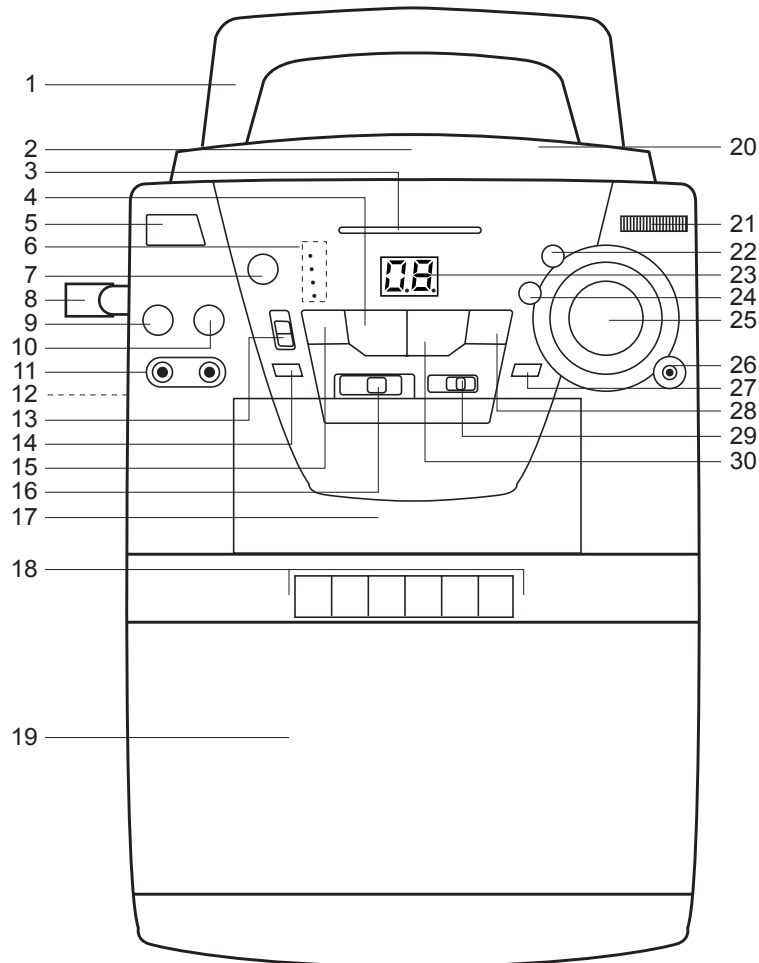
## 23. HEAT

The product should be situated away from heat sources such as radiators, heat registers, stoves, or other products (including amplifiers) that produce heat.

## 24. NOTE TO CATV SYSTEM INSTALLER

This reminder is provided to call the CATV system installer's attention to Article 820-40 of the NEC that provides guidelines for proper grounding and, in particular, specifies that the cable ground shall be connected to the grounding system of the building, as close to the point of cable entry as practical.

## LOCATION OF CONTROLS



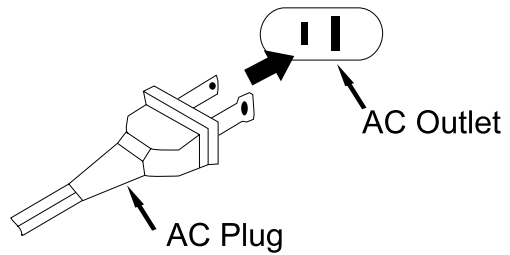
- |  |                                       |
|--|---------------------------------------|
| 1. Carrying Handle                                 | 18. Cassette Buttons (right to left): |
| 2. CD Compartment                                  | PAUSE (  )                            |
| 3. Dial Scale and Pointer                          | STOP/EJECT (■▲)                       |
| 4. Stop (■) Button                                 | FAST FORWARD (▶▶)                     |
| 5. POWER Button                                    | REWIND (◀◀)                           |
| 6. Indicators (PLAY/PAUSE, REPEAT, PROGRAM, POWER) | PLAY (▶)                              |
| 7. ECHO Control                                    | RECORD (●)                            |
| 8. Microphone Handle                               | 19. Speaker                           |
| 9. MIC1 VOLUME Control                             | 20. CD Open/Close Area                |
| 10. MIC 2 VOLUME Control                           | 21. TUNING Control                    |
| 11. Microphone jacks                               | 22. BASS Control                      |
| 12. AUDIO/VIDEO OUT Jacks (Rear of Unit)           | 23. CD Display                        |
| 13. VOCAL (MUSIC/NORMAL/VOCAL) Switch              | 24. TREBLE Control                    |
| 14. REPEAT Button                                  | 25. VOLUME Control                    |
| 15. Skip/Search ◀◀ Button                          | 26. Headphone Jack                    |
| 16. Function (RADIO/TAPE/CD) Switch                | 27. PROG. (Program) Button            |
| 17. Cassette Compartment                           | 28. Skip/Search ▶▶ Button             |
|  | 29. Band (AM/FM) Switch               |
|  | 30. Play/Pause (▶/  ) Button          |

## POWER SOURCE

### AC:

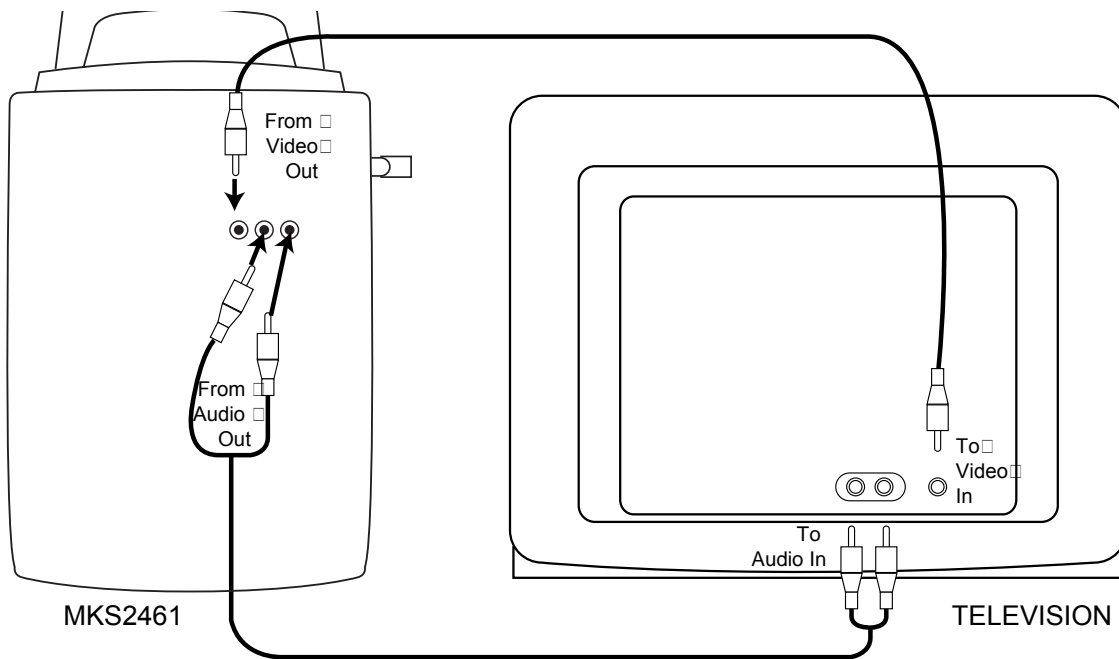
Use the AC polarized line cord included with the unit for operation on AC power. Insert into a conveniently located AC outlet having 120V, 60Hz.

**NOTE:** The AC plug supplied with the unit is polarized to help minimize the possibility of electric shock. If the AC plug does not fit into a nonpolarized AC outlet, do not file or cut the wide blade. It is the user's responsibility to have an electrician replace the obsolete outlet.



## CONNECTIONS

### CONNECTING THE UNIT TO A TELEVISION

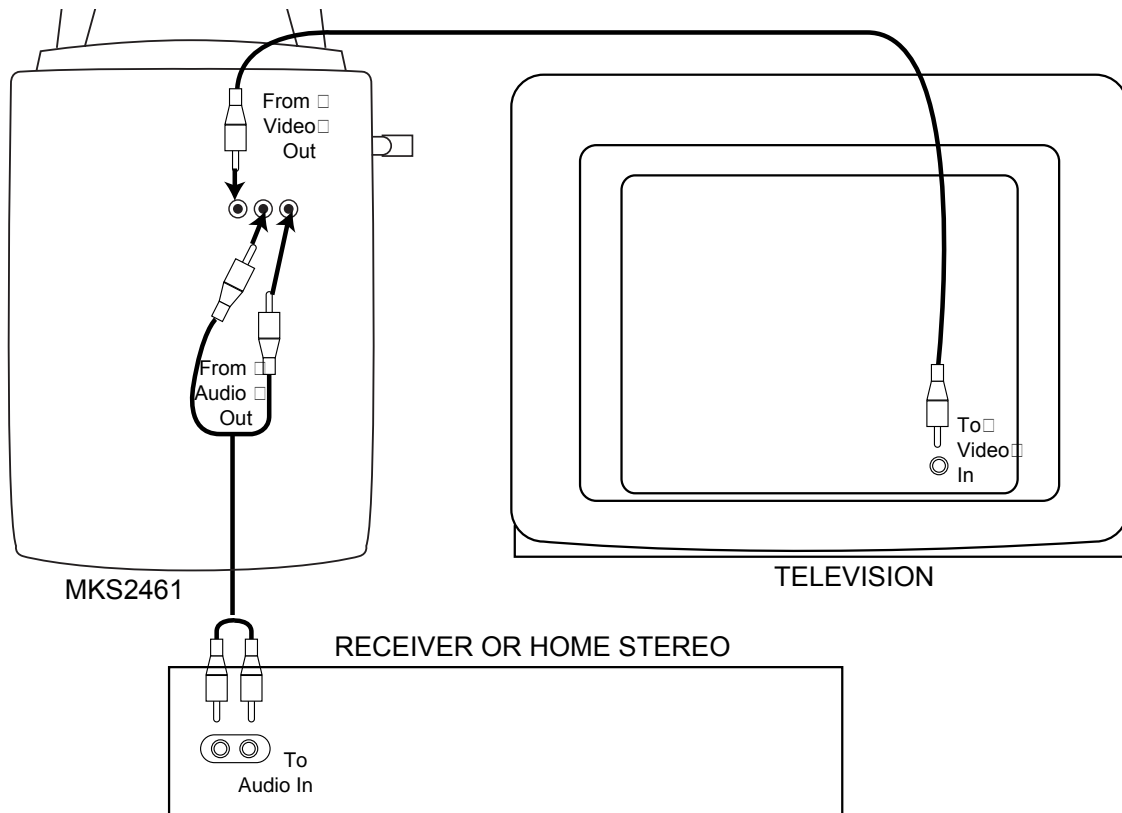


### NOTES FOR CONNECTING TO A TV:

- Connecting the unit to a TV will allow you to broadcast the unit's sound through the TV. If playing a CD+G disc, you will also see video and lyrics on the TV.
- When connecting the unit, refer to the owner's manual of the TV, as well as this manual.
- When connecting the unit to the TV, make sure the power is off and both units are unplugged before making any connections.
- If your TV only has one audio input, the use of a "Y" connector may be necessary. Visit your local electronics supply store.
- After connecting, set the Audio mode on the TV to the desired audio setting.
- If your TV does not have a video in jack, you can use an RF modulator (not included).

## CONNECTIONS (CONTINUED)

### CONNECTING THE UNIT TO A TELEVISION AND A RECEIVER/HOME STEREO



#### NOTES FOR CONNECTING TO A TV AND A RECEIVER/HOME STEREO:

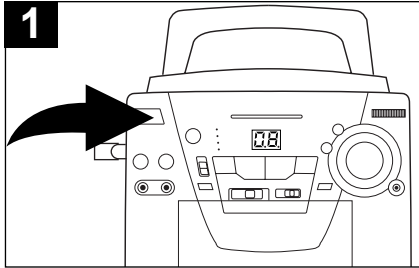
- Connecting the unit to a receiver/home stereo will allow you to broadcast the unit's sound through the receiver/home stereo's speakers. If playing a CD+G disc, you will also see video and lyrics when connecting the video cables to the TV.
- When connecting the unit, refer to the owner's manual of the TV and receiver/home stereo, as well as this manual.
- When connecting the unit, make sure the power is off and both units are unplugged before making any connections.
- If your TV does not have a video in jack, you can use an RF modulator (not included).

#### CONNECTING THE MICROPHONE(S)

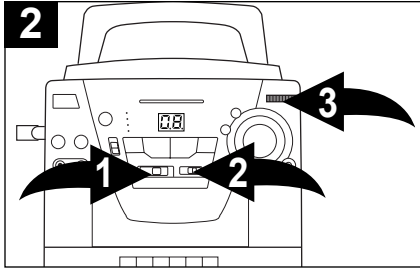
This unit has two microphone jacks, use one with the supplied microphones, which will allow you to sing along with your favorite songs. Before connecting, make sure the MIC VOLUME Controls are set to minimum.

If only connecting one microphone, connect it to the MIC1 jack.

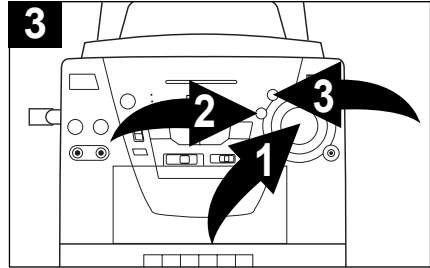
## RADIO OPERATION



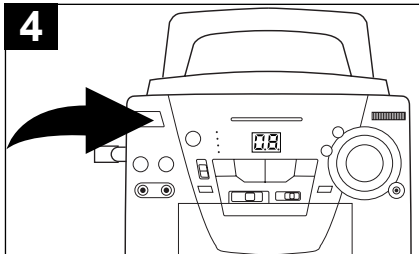
Press the POWER button to turn the unit on; the POWER indicator will light.



Slide the Function switch ❶ to the RADIO position and the BAND switch ❷ to the AM or FM position. Rotate the TUNING control ❸ to select a station.



Adjust the VOLUME ❶, TREBLE ❷ and BASS ❸ controls as desired.



Press the POWER button to turn the unit off; the POWER indicator will turn off.

### ANTENNAS

**AM** – This unit has a built-in ferrite rod antenna, which provides adequate reception in most areas. If reception is weak, turn the unit to improve reception.

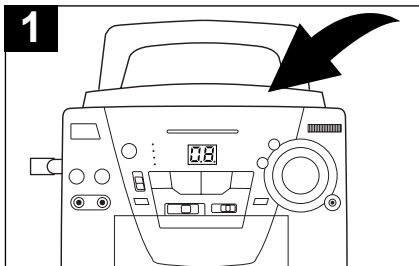
**FM** – The FM antenna is built into the AC cord. If reception is weak, adjust the length and the angle of the cord.

### BASS AND TREBLE CONTROLS

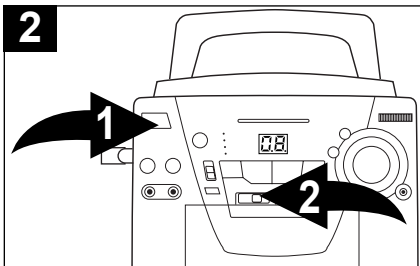
Use these controls to adjust the Bass and Treble as desired.

## COMPACT DISC (CD) OPERATION

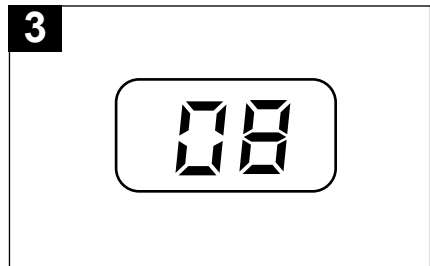
### TO INSERT A CD



Press the CD Door OPEN/CLOSE area to open the CD compartment door. Place a CD on the center spindle, with the printed label side facing up. Close the CD compartment door.



Press the POWER button ❶ to turn the unit on; the POWER indicator will light. Slide the Function switch ❷ to the CD position.

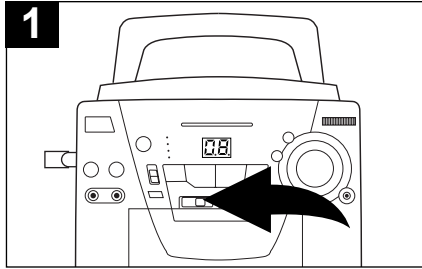


The total number of tracks will be displayed and the CD player will stop.

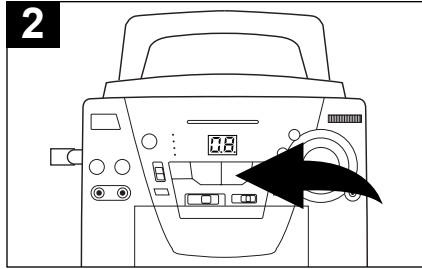


## COMPACT DISC (CD) OPERATION (CONTINUED)

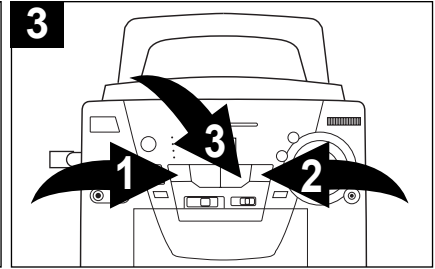
### TO PLAY A CD



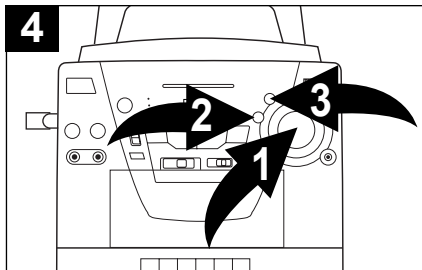
1 Slide the Function switch to the CD position. Insert a CD as described in the TO INSERT A CD section on page 7.



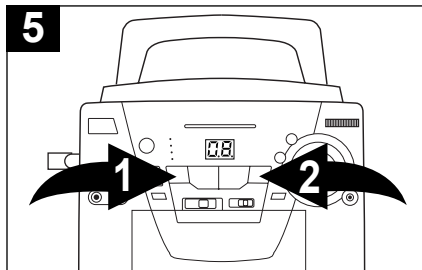
2 To play a disc from the beginning, press the Play/Pause (▶/||) button. Press the Play/Pause (▶/||) button again to pause playback; the PLAY/PAUSE indicator will blink.



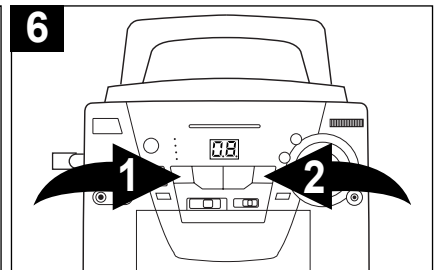
3 To start from a specific track, locate the track using the Skip/Search ◀▶ ❶ or ▶▶ ❷ button and press the Play/Pause (▶/||) button ❸.



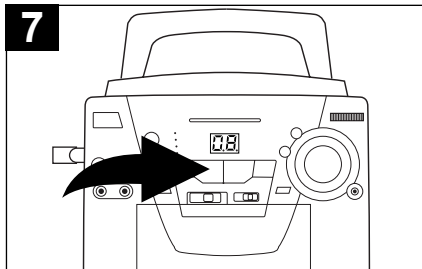
4 Adjust the VOLUME ❶, TREBLE ❷ and BASS ❸ controls as desired.



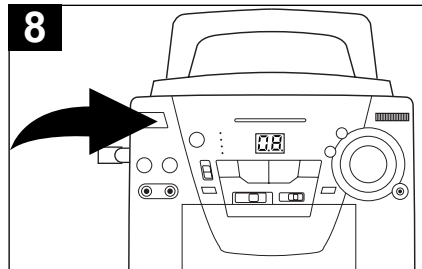
5 To skip forward or backward through the tracks on the disc, press the Skip/Search ◀▶ ❶ or ▶▶ ❷ button.



6 To search forward or backward through the disc, press and hold the Skip/Search ◀▶ ❶ or ▶▶ ❷ button, a chattering noise will be heard.



7 When the disc is through playing, it will stop rotating. Press the Stop (■) button to stop the disc before it is finished.



8 Press the POWER button to turn the unit off; the POWER indicator will turn off.

#### FAQS:

*Do I need an adapter to play 3" singles?*

No, simply insert the 3" single into the groove.

*What is the maximum time for a CD in this unit?*

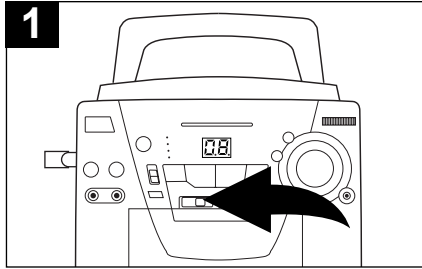
The maximum time is 74 minutes.

#### NOTES:

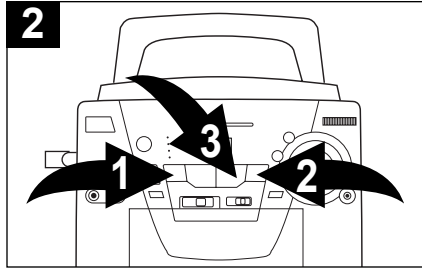
- If a disc is inserted incorrectly, dirty, damaged or not present at all, it will not play.
- As each track is played, the track number is shown in the display.
- To prevent damage to the disc, never open the CD door while the disc is rotating. Wait for the disc to stop before opening the CD door. Never touch the lens when the CD compartment door is open.

## COMPACT DISC (CD) OPERATION (CONTINUED)

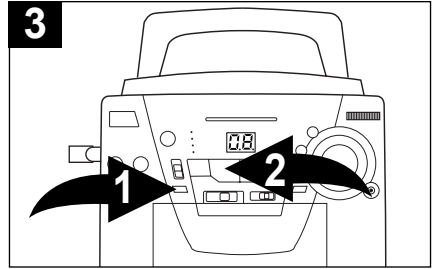
### TO REPEATEDLY PLAY BACK ONE TRACK



1 Slide the Function switch to the CD position. Insert a CD as described in the TO INSERT A CD section on page 7.

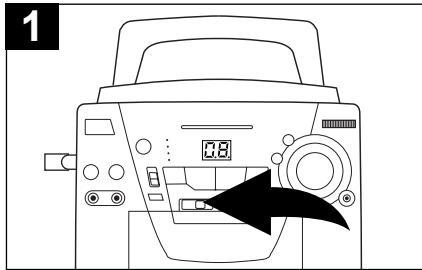


2 Select a track using the Skip/Search ◀▶ ❶ or ▶▶ ❷ button and press the Play/Pause (▶/||) button ❸.

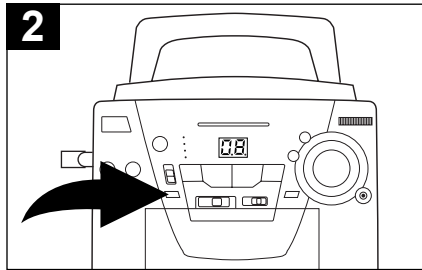


3 Press the REPEAT button ❶ once, the REPEAT indicator will blink and the unit will play the selected track over and over until the Stop (■) button ❷ is pressed.

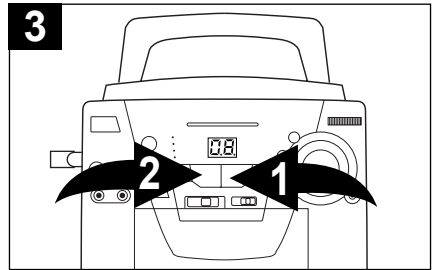
### TO REPEATEDLY PLAY BACK ALL TRACKS ON A CD



1 Slide the Function switch to the CD position. Insert a CD as described in the TO INSERT A CD section on page 7.



2 Press the REPEAT button twice, the REPEAT indicator will light.



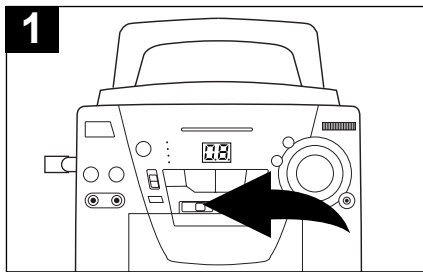
3 Press the Play/Pause (▶/||) button ❶ to begin playback and the unit will play the entire disc over and over until the Stop (■) button ❷ is pressed.

#### NOTE:

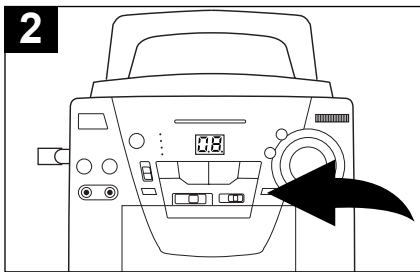
To stop and cancel Repeat playback, press the Stop (■) button.

## COMPACT DISC (CD) OPERATION (CONTINUED)

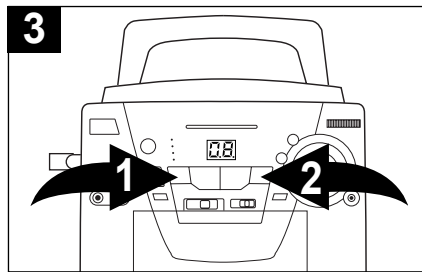
### TO PROGRAM THE MEMORY (UP TO 20 TRACKS)



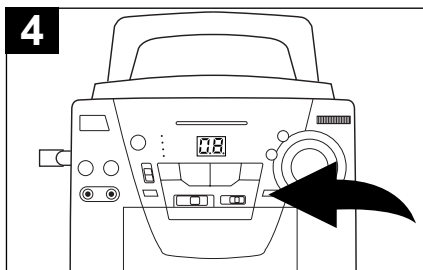
1 Slide the Function switch to the CD position. Insert a CD as described in the TO INSERT A CD section on page 7.



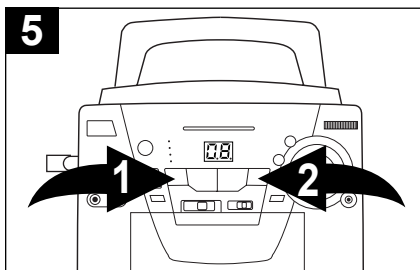
2 Press the PROGRAM button, the PROGRAM indicator and display will blink.



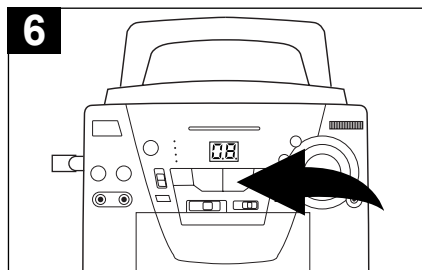
3 Use the Skip/Search ◀◀ 1 or ▶▶ 2 button to select the first track to be programmed.



4 Press the PROGRAM button again; the selected track has now been programmed.



5 Repeat steps 3 and 4 to program the other desired tracks in sequence (up to 20 tracks).



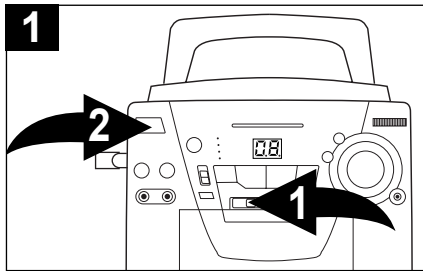
6 Press the Play/Pause (▶/||) button to begin playback; the Program indicator will light and the tracks will play in the order programmed.

#### NOTES

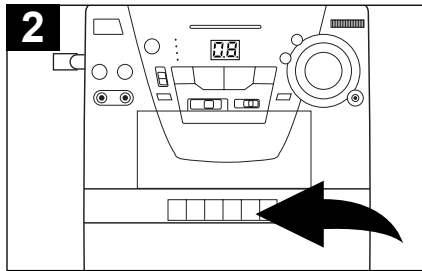
- Programming is the ability to preselect the order in which a series of tracks will be played.
- Each track may be stored in the program memory as many times as desired (up to 20 tracks).
- As each track is played, its track number will be displayed. You can move forward or backward through the programmed tracks with the Skip/Search ◀◀ or ▶▶ button.
- The CD player will stop after all programmed tracks have been played or the Stop (■) button is pressed.

## CASSETTE TAPE OPERATION

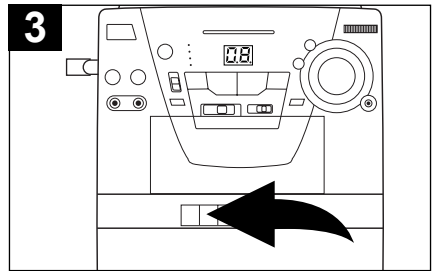
### PLAYING CASSETTE TAPES OR KARAOKE



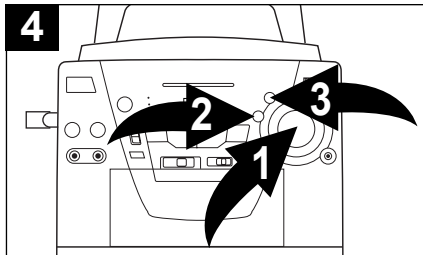
Press the POWER button ❶ to turn the unit on; the POWER indicator will light. Slide the Function switch ❷ to the TAPE position.



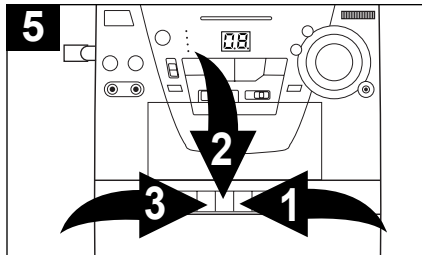
Press the STOP/EJECT (■▲) button to open the Cassette Door and insert a cassette with the open end facing down.



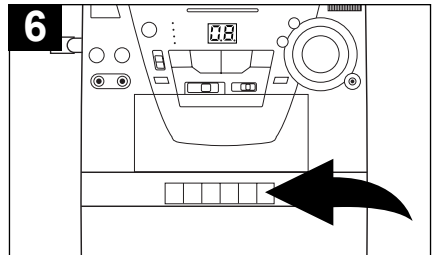
Press the PLAY (▶) button to begin playback.



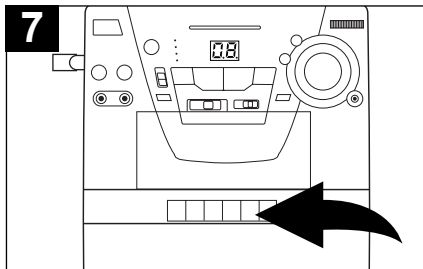
Adjust the VOLUME ❶, TREBLE ❷ and BASS ❸ controls as desired.



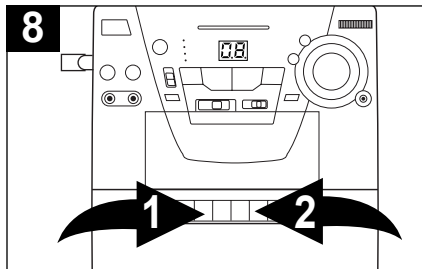
To advance or rewind the tape rapidly, press either the F.FWD (▶▶) ❶ or REWIND (◀◀) ❷ button. When you reach the desired point, press the PLAY (▶) button ❸ to resume normal playback.



To pause playback momentarily, press the PAUSE (||) button. The tape movement stops but the tape motor is still running. Press the PAUSE (||) button again to release pause and resume normal playback.



To stop playback before the tape ends, press the STOP/EJECT (■▲) button. The PLAY (▶) button is released and the tape motor shuts off.



When the tape reaches the end, the auto-stop mechanism activates, the PLAY (▶) button is released and the tape motor shuts off. Press the STOP/EJECT (■▲) button ❶ to open the Cassette Door and remove the tape.

#### KARAOKE:

If you would like to sing along with a tape, simply play the tape, insert a microphone and sing along!

If you insert a Karaoke tape, you can set the VOCAL switch to one of the following positions:

**MUSIC:** Plays instruments, but not vocals.

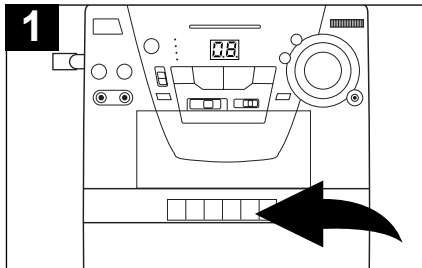
**NORMAL:** Plays instruments and vocals.

**VOCAL AUTO:** Plays instruments with vocals, but the vocals will stop when you start singing into the microphone.

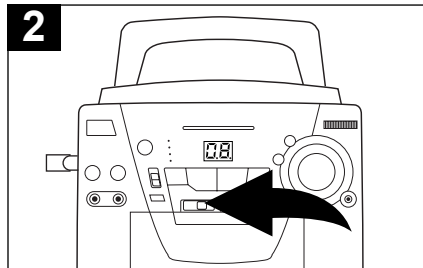
## KARAOKE OPERATION

### KARAOKE RECORDING FROM A CD OR CD+G (COMPACT DISC + GRAPHICS) DISC

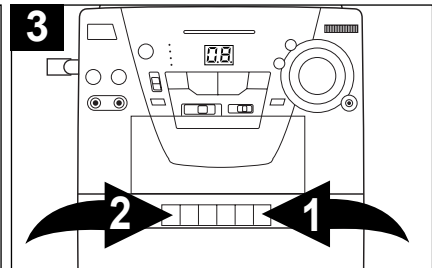
You can record onto a cassette tape from a CD+G karaoke or standard CD. CD+G discs combine the recorded music with an additional video track that displays the song lyrics on a television screen. As the song plays, the words to be sung are highlighted in a different color.



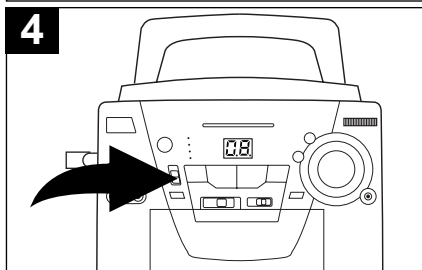
1 Press the STOP/EJECT (■▲) button to open the Cassette Door and insert a cassette with the open end facing down.



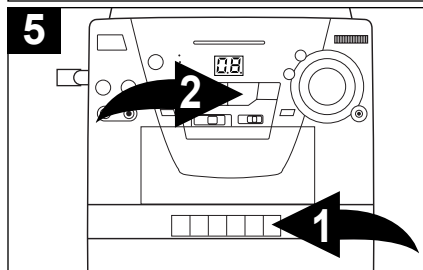
2 Slide the Function switch to the CD position and insert a CD or CD+G disc. Insert the microphone into the appropriate jack.



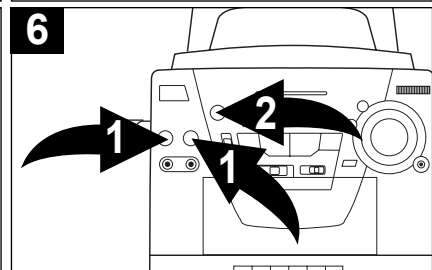
3 Press the PAUSE (II) button ❶, then press the RECORD (●) button ❷ (the PLAY button will be automatically depressed).



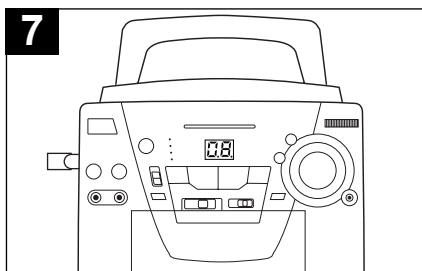
4 Slide the VOCAL switch to select one of the following positions:  
**MUSIC:** Plays instruments, but not vocals.  
**NORMAL:** Plays instruments and vocals.  
**VOCAL AUTO:** Plays instruments with vocals, but the vocals will stop when you start singing into the microphone.



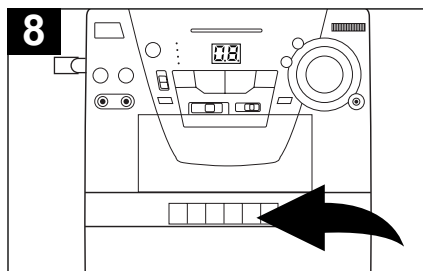
5 Press the PAUSE button ❶ to release pause and then press the CD Play/Pause (▶/II) button ❷ to start CD/CD+G playback. If connected to a TV and using a CD+G disc, the image and lyrics will appear on the TV.



6 Adjust the MIC1/MIC2 VOLUME controls ❶ as desired. Increasing this control will increase the volume of the respective microphone. Adjust the ECHO control ❷ to add an echo effect to your voice. The ECHO control ❷ is variable so add as much or as little reverb as desired.



7 Sing or talk into the microphone(s) and both the CD/CD+G and the microphone(s) will be recorded onto the cassette.



8 When you are finished recording, press the STOP/EJECT (■▲) button to stop the tape.

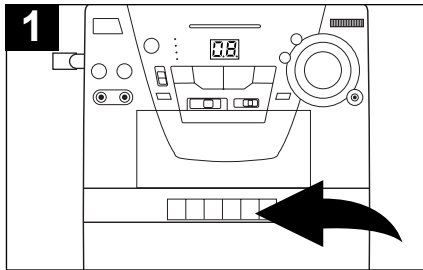
#### NOTES:

- Refer to SAFEGUARD AGAINST ACCIDENTAL ERASURE section (page 14) if the RECORD button cannot be pressed.
- Keep the microphone away from the unit to avoid feedback.

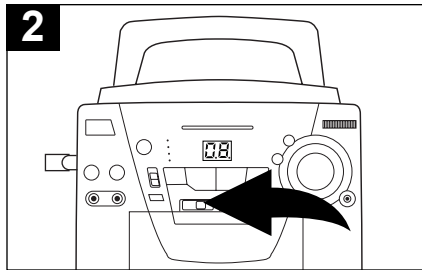
## KARAOKE OPERATION (CONTINUED)

### RECORDING FROM THE RADIO

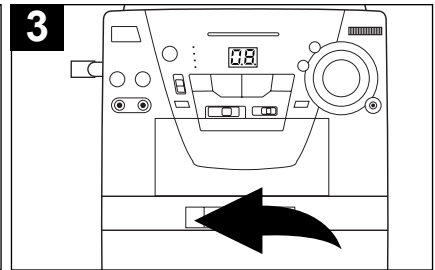
You can record onto a cassette tape from the built-in radio.



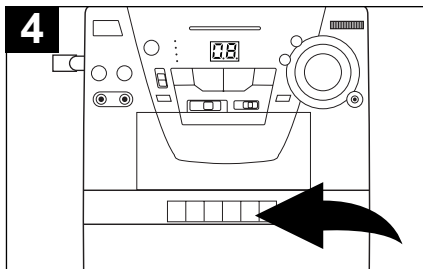
**1** Press the STOP/EJECT (■▲) button to open the Cassette Door and insert a cassette with the open end facing down.



**2** Slide the Function switch to the RADIO position and tune a station. Insert the microphone into the appropriate jack.



**3** Press the RECORD (●) button (the PLAY button will be automatically depressed) to start recording.



**4** When you are finished recording, press the STOP/EJECT (■▲) button to stop the tape.

#### NOTES:

- Refer to SAFEGUARD AGAINST ACCIDENTAL ERASURE section (page 14) if the RECORD button cannot be pressed.

## CARE AND MAINTENANCE

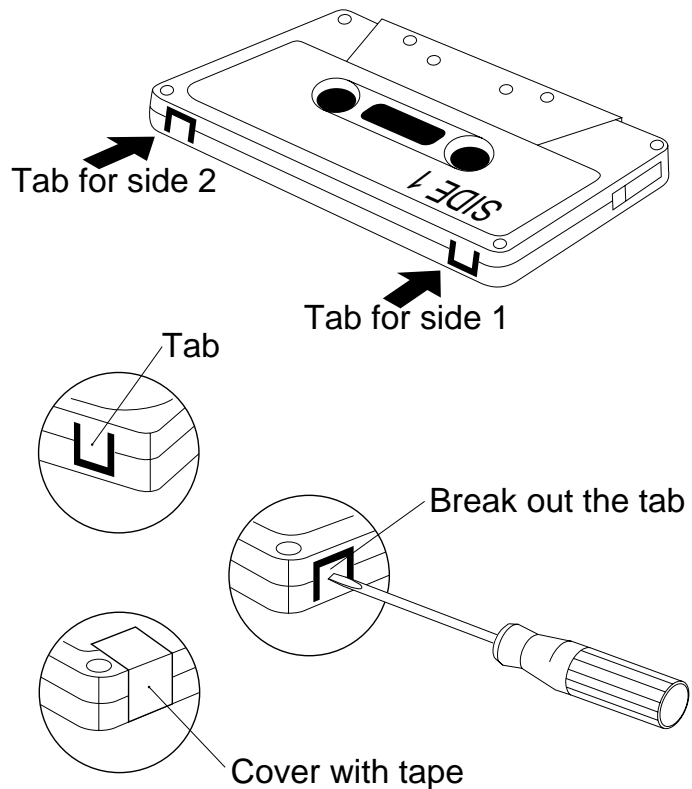
### SAFEGUARD AGAINST ACCIDENTAL ERASURE

When a new recording is made, any program material previously recorded is automatically erased and only the new recording remains. To safeguard valuable recordings from being erased accidentally, the cassette and the deck are equipped with a special device.

On the back of the cassette there is an erase prevention tab on each side. To prevent accidental erasing, break out these tabs with a screwdriver. If only one side of the tape is to be protected, break out the tab on the left side with the side desired facing you.

To record on a tape in which the tab has been broken, place a piece of adhesive tape over that area.

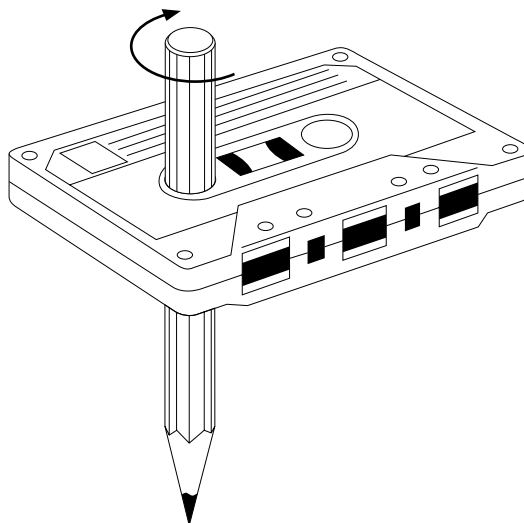
**NOTE:** When a tab is broken out, the record button cannot be depressed.



### CASSETTE TAPE RECOMMENDATIONS

Standard tape lengths have 15 (C-30), 30 (C-60) and 45 (C-90) minutes of recording time on each side. Longer length tapes of 60 (C-120) minutes of recording time on each side are not recommended. Use only high quality tapes. If a problem develops, check the unit first with another cassette to determine if the problem is with the cassette, and not with the unit.

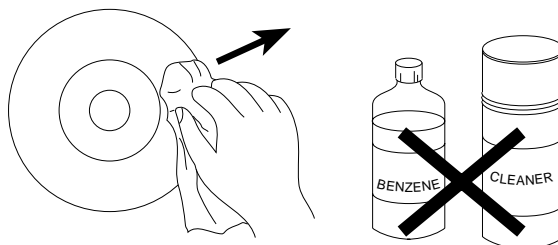
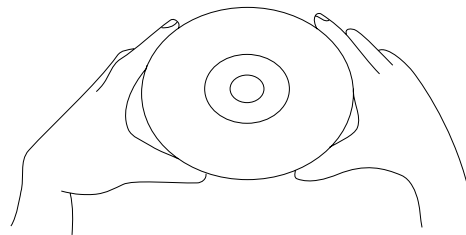
If there is any slack in the cassette, it should be removed before inserting the cassette. Place a pencil in one of the hubs and rotate it clockwise until all slack is taken up.




## CARE AND MAINTENANCE (CONTINUED)

### Caring for Compact Discs

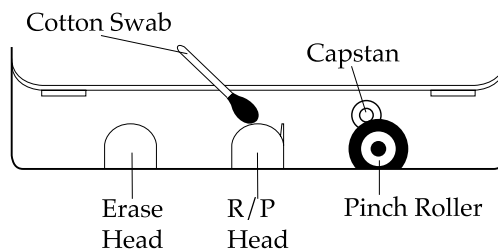
- Treat the disc carefully. Handle the disc only by its edges. Never allow your fingers to come in contact with the shiny, unprinted side of the disc.
- Do not attach adhesive tape, stickers, etc. to the disc label.
- Clean the disc periodically with a soft, lint-free, dry cloth. Never use detergents or abrasive cleaners to clean the disc. If necessary, use a CD cleaning kit.
- If a disc skips or gets stuck on a section of the disc, it is probably dirty or damaged (scratched).
- When cleaning the disc, wipe in straight lines from the center of the disc to the outer edge of the disc. Never wipe in circular motions.



- This unit is designed to play only compact discs bearing the identification logo as shown here.
- 
- Other discs may not conform to the CD standard and may not play properly.
  - Compact Discs should be stored in their cases after each use to avoid damage.
  - Do not expose compact discs to direct sunlight, high humidity, high temperatures, or dust, etc. Prolonged exposure or extreme temperatures can warp the disc.
  - Do not stick or write anything on either side of the disc. Sharp writing instruments, or the ink may damage the surface.

### Cleaning the unit

- To prevent fire or shock hazard, disconnect your unit from the AC power source when cleaning.
- The finish on your unit may be cleaned with a dust cloth and cared for as other furniture. Use caution when cleaning and wiping the plastic parts.
- Mild soap and a damp cloth may be used on the front panel.
- Periodic cleaning of the tape heads, capstan and pinch roller is necessary to maintain good sound reproduction. Clean them after every 100 hours of use or less if playback has deteriorated. Use a cotton swab moistened with head cleaning solution or isopropyl alcohol, then wipe dry with another swab.



**NOTE:** Never use metal objects on or near the tape heads. Do not allow any cleaning material to fall into the tape assembly.



## TROUBLESHOOTING GUIDE

Should this unit exhibit a problem, check the following before seeking service:

Symptom	Possible Cause	Solution
<b>Radio</b>		
Noise or sound distorted on radio broadcasts.	Station not tuned properly for AM or FM.	Retune the AM or FM broadcast station.
	FM: AC cord is not fully extended or uncoiled.	Extend AC cord.
	AM: Unit is not positioned correctly.	Rotate unit until best reception is obtained.
AM or FM, no sound.	Band switch not on AM or FM.	Slide to select AM or FM .
	Volume at minimum.	Increase volume.
<b>Cassette Player</b>		
No sound.	Function switch not set to TAPE.	Slide to the TAPE position.
	Volume at minimum.	Increase volume.
Sound distorted.	Dirty head.	Clean the head.
Speed varies.	Tape old.	Replace the tape.
	Cassette tape worn out.	Replace the tape.
<b>Cassette Recorder</b>		
Will not record.	Erase prevention tab removed.	Cover hole with adhesive tape.
Distorted sound on playback.	Defective tape or dirty tape head.	Replace tape or clean tape head.
<b>Compact Disc Player</b>		
CD Player will not play.	Function switch not set to CD.	Slide to the CD position.
	CD is not installed or installed upside-down.	Insert CD with label side up.
CD skips while playing.	Disc is dirty or scratched.	Wipe disc with cloth or use another disc.
<b>General</b>		
No sound.	Power cord disconnected.	Connect power cord.

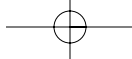
## TROUBLESHOOTING GUIDE (CONTINUED)

Symptom	Possible Cause	Solution
<b>Karaoke</b>		
Some vocals are still present when VOCAL switch is set to OFF.	Using non-CD+G CD.	Use CD+G CD.
	Backup vocals are supposed to be included.	This is normal, only the main vocal(s) are to be reduced.
Feedback is heard when singing.	Microphone is too close to unit or MIC Volume is too high.	Move microphone away from unit or decrease MIC Volume.
Words do not appear on TV screen.	Using non-CD+G CD.	Use CD+G CD.
	Connections not done properly.	Connect to TV properly.
	Using the radio.	When signing to the radio, the lyrics do not appear on the screen.

**FOR ADDITIONAL SET-UP OR OPERATING ASSISTANCE, PLEASE VISIT OUR WEBSITE AT  
WWW.MEMCORPINC.COM  
OR CONTACT CUSTOMER SERVICE AT 1-800-919-3647**

**PLEASE KEEP ALL PACKAGING MATERIAL FOR AT LEAST 90 DAYS IN CASE YOU NEED  
TO RETURN THIS PRODUCT TO YOUR PLACE OF PURCHASE OR MEMOREX.**

**FOR PARTS AND ACCESSORIES, CONTACT FOX INT'L AT 1-800-321-6993.**



# SPECIFICATIONS

**GENERAL:**

Power Source .....120V, 60Hz AC  
 Speaker .....8 Ohms  
 Output Power.....7W @ 10% THD

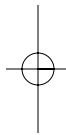
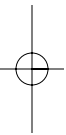
**RADIO SECTION:**

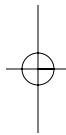
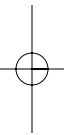
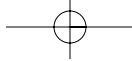
FM Frequency Range .....88 - 108 MHz  
 AM Frequency Range .....530 - 1710KHz

**CD SECTION:**

Disc Diameter .....4.72" (120mm)  
 3.15" (80mm) Single CD  
 Optical Source.....Semiconductor Laser

Specifications are subject to change without notice.





Memcorp, Inc.  
Weston, FL  
Printed in Hong Kong

Visit our website at [www.memcorpinc.com](http://www.memcorpinc.com)



## Free Manuals Download Website

<http://myh66.com>

<http://usermanuals.us>

<http://www.somanuals.com>

<http://www.4manuals.cc>

<http://www.manual-lib.com>

<http://www.404manual.com>

<http://www.luxmanual.com>

<http://aubethermostatmanual.com>

Golf course search by state

<http://golfingnear.com>

Email search by domain

<http://emailbydomain.com>

Auto manuals search

<http://auto.somanuals.com>

TV manuals search

<http://tv.somanuals.com>