

# OptimusPDA SP5700 Series User Manual



*Version 2.0*

March 2007

# Contents

|   |           |
|---|-----------|
| <b>Notice.....</b>                                    | <b>6</b>  |
| <b>OptimusPDA–General view .....</b>                  | <b>9</b>  |
| <b>Getting Started .....</b>                          | <b>10</b> |
| 2.1 Charging the Battery .....                        | 10        |
| 2.2 Turning on/off.....                               | 12        |
| <b>Settings .....</b>                                 | <b>15</b> |
| 3.1 Sleep Mode .....                                  | 15        |
| 3.2 LCD Display.....                                  | 15        |
| 3.3 Volume & Sounds .....                             | 15        |
| 3.4 Date/Time.....                                    | 15        |
| <b>PDA Management .....</b>                           | <b>16</b> |
| 4.1 Using the Stylus.....                             | 16        |
| 4.2 Calibrating the Screen .....                      | 16        |
| 4.3 Resetting .....                                   | 17        |
| 4.3.1 Performing a Soft Reset.....                    | 17        |
| 4.3.2 Performing a Hard Reset .....                   | 18        |
| <b>Applications .....</b>                             | <b>19</b> |
| 5.1 Creating Documents.....                           | 19        |
| 5.2 Barcode Scanning .....                            | 24        |
| 5.2.1 Laser Scan Engine .....                         | 24        |
| 5.2.2 Image Scan Engine .....                         | 27        |
| 5.3 Connecting to a Desktop .....                     | 29        |
| 5.3.1 Installing ActiveSync on a Desktop .....        | 29        |
| 5.3.2 Setting up a partnership .....                  | 30        |
| 5.4 Wireless Setting .....                            | 33        |
| 5.5 Wireless LAN .....                                | 35        |
| 5.6 GSM/GPRS .....                                    | 37        |
| 5.6.1 Initializing the Modem.....                     | 38        |
| 5.6.2 Checking Subscriber Identity Module (SIM) ..... | 40        |
| 5.6.3 Menu.....                                       | 41        |
| 5.6.4 Voice call .....                                | 45        |
| 5.6.5 Short Message Service .....                     | 46        |
| 5.6.6 Phonebook .....                                 | 48        |
| 5.6.7 History .....                                   | 51        |

|   |           |
|---|-----------|
| 5.6.8 Sound Settings .....              | 52        |
| 5.6.9 Setting a Wireless Network .....  | 53        |
| 5.6.10 How to Lock Menu.....            | 55        |
| 5.6.11 Connecting to GPRS Network.....  | 56        |
| <b>Troubleshooting.....</b>             | <b>61</b> |
| <b>Specifications .....</b>             | <b>63</b> |
| 7.1 Physical characteristics.....       | 63        |
| 7.2 Performance.....                    | 63        |
| <b>Limited Warranty Statement .....</b> | <b>64</b> |
| <b>Regional Offices .....</b>           | <b>66</b> |

## Pictures

|  |    |
|--|----|
| <b>Picture 1</b> Front and left side view.....         | 9  |
| <b>Picture 2</b> Positioning PDA in the cradle .....   | 10 |
| <b>Picture 3</b> Charging process .....                | 11 |
| <b>Picture 4</b> Battery cover .....                   | 12 |
| <b>Picture 5</b> Power button .....                    | 13 |
| <b>Picture 6</b> Desktop background .....              | 13 |
| <b>Picture 7</b> Navigating to the Control Panel.....  | 14 |
| <b>Picture 8</b> Calibration screen.....               | 16 |
| <b>Picture 9</b> Calibration settings completion ..... | 16 |
| <b>Picture 10</b> Reset button .....                   | 17 |
| <b>Picture 11</b> Power button.....                    | 18 |
| <b>Picture 12</b> WordPad shortcut.....                | 20 |
| <b>Picture 13</b> New Document display.....            | 20 |
| <b>Picture 14</b> Keyboard Icon .....                  | 21 |
| <b>Picture 15</b> Keyboard panel .....                 | 21 |
| <b>Picture 16</b> Transcriber program selection.....   | 22 |
| <b>Picture 17</b> Transcriber program .....            | 23 |
| <b>Picture 18</b> Barcode scan test.....               | 23 |
| <b>Picture 19</b> Barcode scanning.....                | 25 |
| <b>Picture 20</b> Scanning result .....                | 26 |
| <b>Picture 21</b> Control panel .....                  | 26 |
| <b>Picture 22</b> Input password .....                 | 26 |

|   |    |
|---|----|
| <b>Picture 23</b> Barcode selection list.....                   | 26 |
| <b>Picture 24</b> Opening barcode image scanning program .....  | 27 |
| <b>Picture 25</b> Disabling image function .....                | 28 |
| <b>Picture 26</b> ActiveSync 4.2 setup wizard .....             | 29 |
| <b>Picture 27</b> Connection process.....                       | 30 |
| <b>Picture 28</b> Partnership set up window.....                | 30 |
| <b>Picture 29</b> Synchronization options .....                 | 31 |
| <b>Picture 30</b> Setup completion.....                         | 31 |
| <b>Picture 31</b> Synchronization process .....                 | 32 |
| <b>Picture 32</b> Synchronization status.....                   | 32 |
| <b>Picture 33</b> Wireless Setting icon .....                   | 33 |
| <b>Picture 34</b> Enabling WLAN and changing settings .....     | 33 |
| <b>Picture 35</b> Wireless functions On/Off.....                | 34 |
| <b>Picture 36</b> Power Save Mode options .....                 | 34 |
| <b>Picture 37</b> Network and Dial-up Connections icon .....    | 35 |
| <b>Picture 38</b> Initializing connection process.....          | 35 |
| <b>Picture 39</b> IP address and server address assignment..... | 36 |
| <b>Picture 40</b> Network connection icon .....                 | 37 |
| <b>Picture 41</b> Connection status.....                        | 37 |
| <b>Picture 42</b> Running Modem.exe from the desktop .....      | 38 |
| <b>Picture 43</b> Open Modem.exe display .....                  | 38 |
| <b>Picture 44</b> Signal strength.....                          | 39 |
| <b>Picture 45</b> Connection quality .....                      | 39 |
| <b>Picture 46</b> Operating mode .....                          | 39 |
| <b>Picture 47</b> Request for SIM card insertion .....          | 40 |
| <b>Picture 48</b> Emergency calls availability .....            | 40 |
| <b>Picture 49</b> Request for PIN .....                         | 40 |
| <b>Picture 50</b> Entering PIN data .....                       | 40 |
| <b>Picture 51</b> Display after connecting to a network .....   | 41 |
| <b>Picture 52</b> Phone setup options .....                     | 42 |
| <b>Picture 53</b> Sound setup .....                             | 43 |
| <b>Picture 54</b> Network setup.....                            | 43 |
| <b>Picture 55</b> PIN edit .....                                | 43 |
| <b>Picture 56</b> Version info.....                             | 43 |
| <b>Picture 57</b> User Interface functions .....                | 44 |

|   |    |
|---|----|
| <b>Picture 58</b> History record .....                      | 44 |
| <b>Picture 59</b> Phonebook .....                           | 44 |
| <b>Picture 60</b> Mailbox .....                             | 45 |
| <b>Picture 61</b> Touch-screen keypad .....                 | 45 |
| <b>Picture 62</b> Keyboard .....                            | 46 |
| <b>Picture 63</b> Mailbox display .....                     | 46 |
| <b>Picture 64</b> Mailbox and SMS windows .....             | 47 |
| <b>Picture 65</b> Editing text and addressing SMS .....     | 47 |
| <b>Picture 66</b> Adding a new contact .....                | 48 |
| <b>Picture 67</b> Phonebook content.....                    | 49 |
| <b>Picture 68</b> Management of phonebook numbers.....      | 50 |
| <b>Picture 69</b> Tracking history records .....            | 51 |
| <b>Picture 70</b> Sound configurations.....                 | 52 |
| <b>Picture 71</b> Network advanced settings .....           | 53 |
| <b>Picture 72</b> Connection to network in manual mode..... | 54 |
| <b>Picture 73</b> Locking menu values .....                 | 55 |

## Tables

|  |    |
|--|----|
| <b>Table 1</b> Solving problems .....        | 61 |
| <b>Table 2</b> Physical specifications.....  | 63 |
| <b>Table 3</b> Hardware specifications ..... | 63 |

## Notice

### 1. Limited Warranty

Metrologic warrants and represents that all Optimus SP5700 Series PDAs are free of all defects in material, workmanship and design, and have been produced and labeled in compliance with all applicable U.S. Federal, state and local laws, regulations and ordinances pertaining to their production and labeling.

This warranty is limited to repair, replacement of product or refund of product price at the sole discretion of Metrologic. Faulty equipment must be returned to one of the following Metrologic repair facilities: Blackwood, New Jersey, USA; Madrid, Spain; or Suzhou, China. To do this, contact the appropriate Metrologic Customer Service/Repair Department to obtain a Returned Material Authorization (RMA) number.

Metrologic will repair the defective parts free of charge if the problem is due to materials or workmanship during the warranty period. The warranty period for this product is one year from the date of product purchase. Provided that the date of purchase is not clear, it is six months from the date of manufacture. The warranty period for the battery is six months from the date of product purchase. Provided that the date of purchase is not clear, it is three months from the date of manufacture.

However, Metrologic does not service free of charge in cases noted below including during the warranty period.

Any damages or defectives: (1) as a result of accident, misuse, abuse, or other external causes; (2) by the reason of flood, typhoon, fire, war or other Acts of God; (3) by the user's arbitrary modification or conversion; (4) by any other reasons beyond defects of materials or workmanship.

### 2. Certifications

This product has been approved by Ministry of Information and Communication.  
EMC (EMI/EMS): MIC, EU EMC directive

### 3. Copyrights

This manual describes and explains the product on the basis of the time of present. METROLOGIC IS NOT LIABLE FOR ANY LOST PROFITS CAUSED BY UNEXPECTED RESULTS CONCERNED WITH OMISSIONS AND THE EDITING OF THIS MANUAL. THE MATERIAL IN THIS MANUAL IS SUBJECT TO CHANGE TO IMPROVE RELIABILITY, FUNCION, OR DESIGN WITHOUT NOTICE. The law protects all programs and the rights. Without the permission from Metrologic, no right to copy, quote or translate this manual in whole or in part is granted except as permitted under copyright law.

Other product names mentioned in this manual such as Microsoft ActiveSync®, Windows® and its logo are registered trademarks of their companies. Metrologic is permitted to use those Microsoft products by an affiliate of Microsoft, Microsoft Licensing, Inc.

All software furnished to the user is on a licensed basis, and it is not sold. Metrologic has the rights of all software, and it grants to the user a license to use the software. The rights of software are granted to the user under the agreement to comply with the terms on the license agreement. Such license should not be sublicensed, distributed or transferred to other persons by the user.

Metrologic License Agreement applies to all software provided by Metrologic. Microsoft

## *OptimusPDA SP5700 Series User Manual*

programs are granted to use by its End User License Agreement (EULA).

The user shall not modify or merge any form of a licensed program with other programs, or use it in a network without prior consent of Metrologic. No right to copy a licensed program in whole or in part is granted except as permitted under copyright law.

Metrologic may terminate the contract in the event where a breach of contract has been made by the user.

### **4. Precautions**

- 1) Always use the supplied AC adaptor and use at the correct voltage.
- 2) Do not dismantle or modify the product arbitrarily. It may cause damage and void warranty.
- 3) Do not use this product in dusty or humid environments.
- 4) Keep the PDA away from magnetic fields or large loudspeakers during use. Data may otherwise be erased from the PDAs memory or damage may be caused to the LCD.
- 5) Avoid eye contact with the laser beam while scanning. It is harmful for your eyes.

### **5. Tips for OptimusPDA trouble-free usage**

- 1) The OptimusPDA is designed to operate between -20°C ~ 50°C. Protect your terminal from extreme temperatures. Do not leave it on the dashboard of a car on a hot day and keep it away from heat sources. Malfunction or loss of stored data may otherwise occur.
- 2) The PDA is durably made to withstand the 1.5m drop test. Care should still be taken not to drop the PDA or to exert excessive pressure on the LCD as the touch-sensitive screen of the PDA is made of glass.
- 3) Although the OptimusPDA is water resistant, do not expose it to rain or moisture for an extended period of time. Avoid using the terminal when it rains heavily and wipe any excess water off the terminal with a soft cloth before using.
- 4) Do not scratch the screen. The stylus pen provided is intended for use on a touch screen and should be used. Never use pens, pencils or any other sharp objects on the screen. Clean the screen with a soft, wet cloth when it is covered by dust.
- 5) Electronic devices are susceptible to RF energy interference from other devices or sources. Avoid using your industrial PDA in the proximity of other signal emitting appliances to ensure correct functioning of your PDA.
- 6) It is recommended not to store or use your terminal in an environment that is extremely dusty, damp or wet.

## 6. Unpacking

Carefully remove protective materials from the PDA and the cradle, and store the shipping cartons in case of the need to return the product for repair. Upon receipt of your PDA it is important to verify that you have received all the equipment listed below.

The PDA box should contain:

- PDA: 1
- LITHIUM-ION BATTERY: 1
- STYLUS: 1
- STYLUS HAND STRAP: 1
- HANDSTRAP: 1\*
- CARRY CASE: 1\*
- LCD PROTECTIVE FILM: 1\*

The single-slot cradle box should contain (optional):

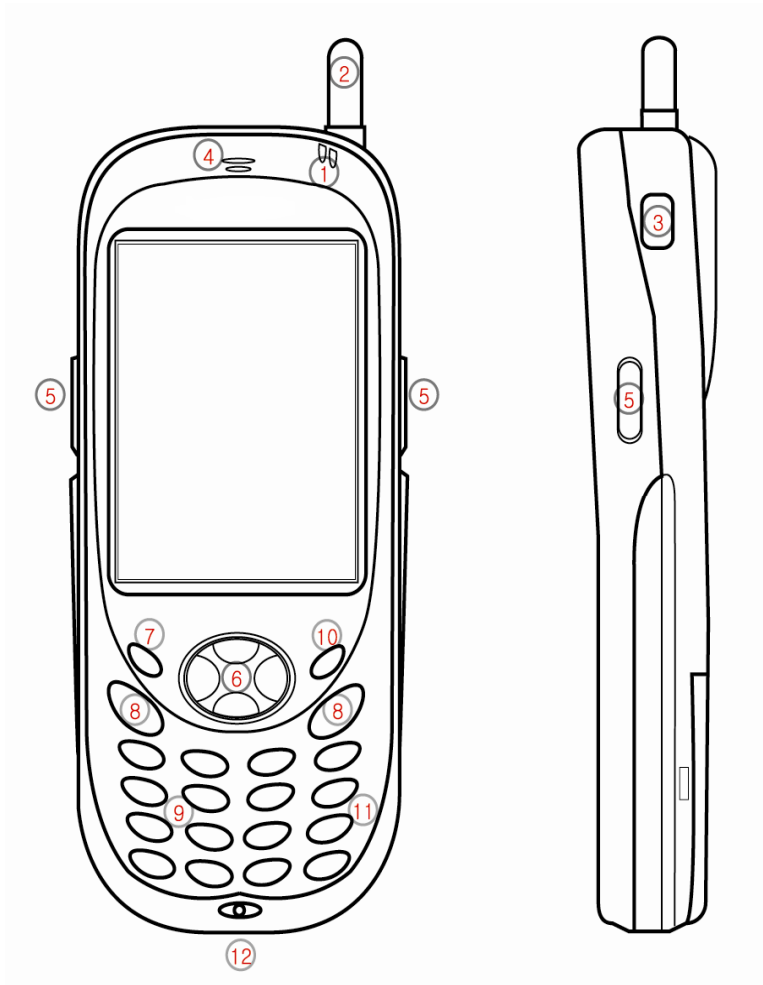
- ONE-SLOT CRADLE: 1
- USB SYNCH CABLE: 1
- RS232 SYNCH CABLE: 1
- POWER SUPPLY: 1
- POWER CORD: 1

\* In plastic bag

If anything is damaged or missing, contact your local agent or distributor immediately. If the problem cannot be solved instantly, you should return the PDA to the local agent or distributor where the purchase was made. However, Metrologic is not liable for any damages that occurred due to mishandling during transportation or when the shipping package is not used. For more details with this regard refer to the warranty section.



## 1. OptimusPDA – General view



**Picture 1** Front and left side view

1. Indicator LEDs (Charging & Operation)
2. Antenna (GSM models only)
3. USB Host connector
4. Speaker
5. Scan Trigger
6. 4 Way Navigation Pad
7. Power Button
8. Send (S) & End (E) Buttons for GSM-GPRS
9. Numeric Key Pad
10. Keypad Backlight Button
11. Function Key
12. Universal I/O connector

## 2. Getting Started

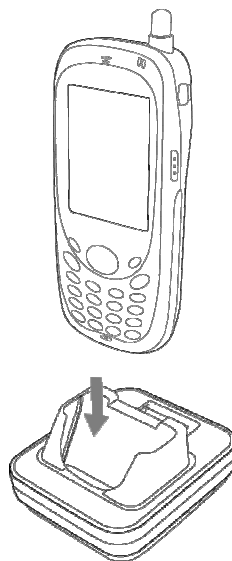
### 2.1 Charging the Battery

Before using the PDA for the first time, recharge the Li-ion Battery. When charging is completed, the LED indicator will turn **GREEN**. Typical charging time is approximately 3 hours.

**Note:** *When charging the PDA for the first time, do not remove the battery before it is fully charged. For an optimal charge time, turn the PDA into sleep mode.*

To charge the battery:

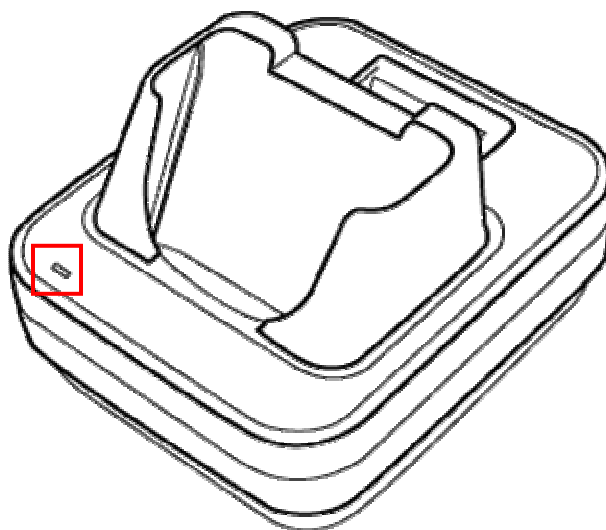
- Connect the cradle to the power supply source.
- Slide your PDA into the cradle until the red LED lights up. To charge the spare battery, insert the battery into the slot at the top of cradle. Charging starts automatically and is completed within 3 hours.



**Picture 2** Positioning PDA in the cradle

- When the charging LED turns **RED**, the battery is charging. The LED will turn **GREEN** when the charging process is complete.

## *OptimusPDA SP5700 Series User Manual*



**Picture 3** Charging process

**Note:** *The OptimusPDA is equipped with a memory backup battery. The backup battery allows data stored in the memory to be kept when the main battery is removed or discharged. If the PDA remains without the main battery for more than 1 hour, the backup battery will start to get low. It is highly recommended to replace the main battery within 10 minutes or keep charging the battery when the PDA is inserted in the cradle. Otherwise data may be lost.*

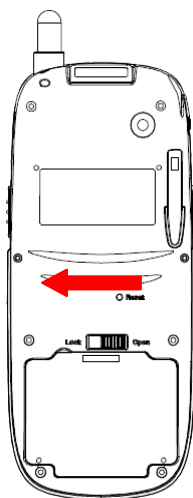
## 2.2 Turning the PDA on/off

Before turning on the PDA, ensure the battery is inserted.

### 1) Inserting the battery

- Slide the battery lock cover left.

**Picture 4** Battery cover

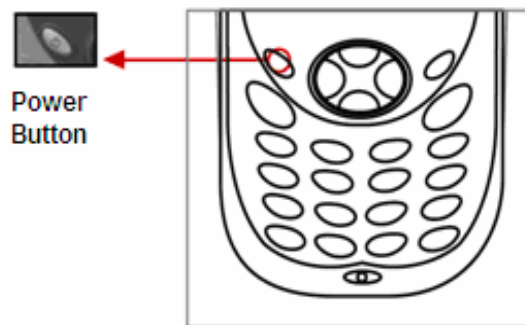


- Insert the battery into the compartment and replace the cover. Ensure the latch is in the lock position.

## *OptimusPDA SP5700 Series User Manual*

### 2) Turning on your OptimusPDA

- Press the **Power** button to turn the PDA on.
- If you press and then hold the **Power** button for about 3 seconds, the PDA switches into sleep mode and turns off.



**Picture 5** Power button

- When the booting process has finished, the Metrologic logo will be displayed on the desktop as illustrated below.

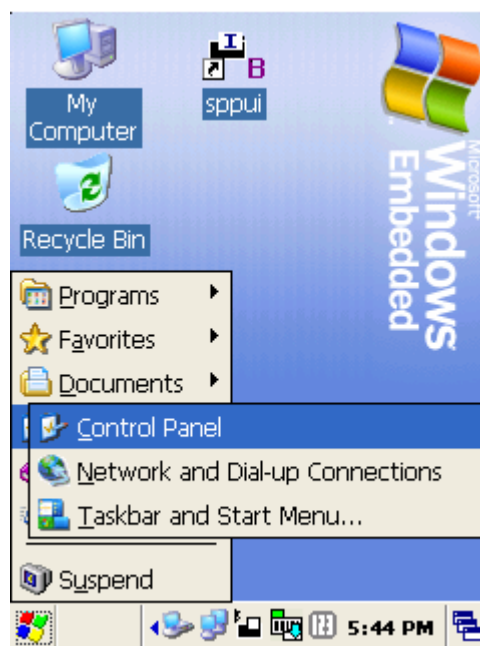


**Picture 6** Desktop background

- If the Power button does not activate your PDA, execute a hard reset. For details on how to do this refer to the section "Performing a Hard Reset".

### 3) Turning off your OptimusPDA

- Press and hold the **Power** button for 3 seconds or tap **Suspend** on the start menu.
- It is possible to set your terminal to auto-suspend status or to auto-turn off after a specified period of time in order to save battery power.
- To change the power setting: Tap **Start** → **Settings** → **Control Panel**. Double tap the **Power** button and select the **Schemes** Tab.



**Picture 7** Navigating to the Control Panel

- It is recommended to remove the battery from the PDA when it is not in use for a long time.

## 3. Settings

### 3.1 Sleep Mode

- 1) To reduce battery consumption the PDA can be manually put in to Sleep Mode. To do this, push the **Power** button for 3 seconds or tap **Start** → **Suspend**. Data stored in RAM remains unchanged when in sleep mode.
- 2) To wake up the PDA from sleep mode, press the **Power** button. When the system wakes up, the screen will display the same view as displayed before entering sleep mode

### 3.2 LCD Display

- 1) To save battery power it is recommended to change the backlight settings so that the backlight turns off when it is not needed.  
Tap **Start** → **Settings** → **Control Panel**, then Double tap **Display**.
- 2) Press the **Backlight** tab and select the required length of time before the backlight switches off.

### 3.3 Volume & Sounds

To change sounds and the volume tap **Start** → **Settings** → **Control Panel**, then double tap the **Volume & Sounds** icon.

### 3.4 Date/Time

In order to adjust the date and time, select **Start** → **Settings** → **Control Panel**, then double tap on the **Date/Time** icon.

## 4. PDA Management

### 4.1 Using the Stylus

The stylus is useful for command selection and entering data. The stylus functions are similar to a mouse connected to a PC.

- 1) Tap: Touch the screen once with the stylus to open an item and select options.
- 2) Drag: Hold the stylus on the icon and drag it across the screen to a selected area. Drag in a list to select multiple items.

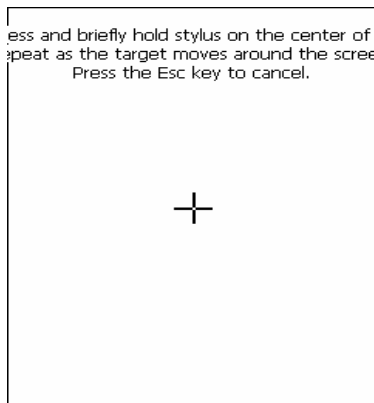
**Note:**

1. If the surface of the display becomes dirty, clean it with a soft cloth before using the stylus pen.
2. Take care not to scratch the screen. When operating the OptimusPDA, use only the stylus provided and never use a pen, pencil or any other sharp objects on the surface of the OptimusPDA screen.
3. Do not let children play with the stylus. Contact with the edges may cause injury.

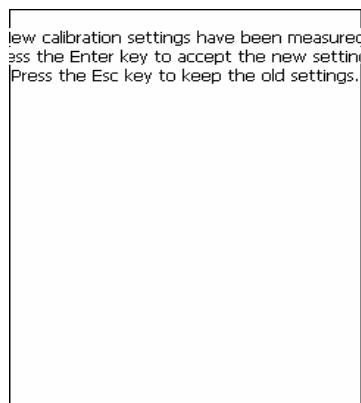
### 4.2 Calibrating the Screen

When tapping the screen with the stylus, programs or functions may not activate or be selected correctly. If this is the case, the screen may need to be calibrated allowing better alignment of the cursor on the touch-screen. To calibrate, follow the below easy steps:

- 1) Select **Start** → **Settings** → **Control Panel**, double tap the **Stylus** icon.
- 2) Select the **Calibration** tab → Select the **Recalibrate** button.
- 2) Using the stylus, tap the center of the cross that appears. Continue to follow the instructions until the screen has been properly calibrated.



**Picture 8** Calibration screen



**Picture 9** Calibration settings completion



## 4.3 Resetting

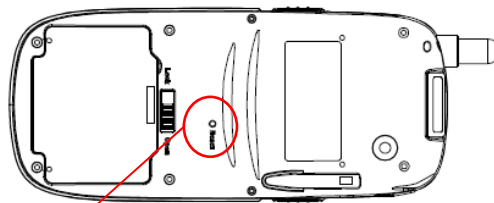
If the screen freezes or the terminal becomes inoperative, you may need to reset your PDA.

### 4.3.1 Performing a Soft Reset

**Note:** *Transfer all stored data into a computer otherwise files that are open during a soft reset may not be retrieved.*

To perform a soft reset, press the **Reset Button** located at the rear of the PDA on the right side above the Battery Cover.

**Picture 10** Reset button



Press the **Reset Button** here by using your stylus

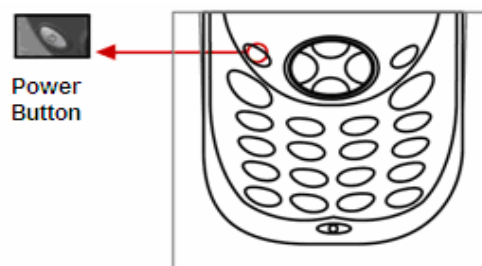
**Note:** *Soft reset restarts the OptimusPDA and saves all stored records.*

### 4.3.2 Performing a Hard Reset

When a Hard Reset is performed, all formats, preferences, date/time, and other settings are restored to their factory default values.

To perform a hard reset, press the **Reset** and **Power** buttons simultaneously.

**Picture 11** Power button



**Note:** *Hard reset not only restarts your PDA, but also erases all stored records and entries in the RAM memory. Therefore, perform a hard reset only in cases when a soft reset mode does not work.*

**! BE CAREFUL WHEN YOU PERFORM A HARD RESET SEVERAL TIMES CONSECUTIVELY WITHIN A SHORT PERIOD OF TIME, THIS MAY CAUSE THE SCREEN TO BECOME BLANK ACCOMPANIED BY VERTICAL LINES.**

## 5. Applications

### 5.1 Creating documents

You can create a new document on your PDA with Microsoft WordPad®<sup>1</sup>, or work on an existing one by sending it from the PC to your OptimusPDA. Data, files, and document uploads/downloads between PDA and computer are controlled by the Microsoft ActiveSync® software.

There are two ways to enter characters into the document using document-editing programs:

- Using the keyboard
- Using the handwriting recognition program

These two methods are explained in more detail below.

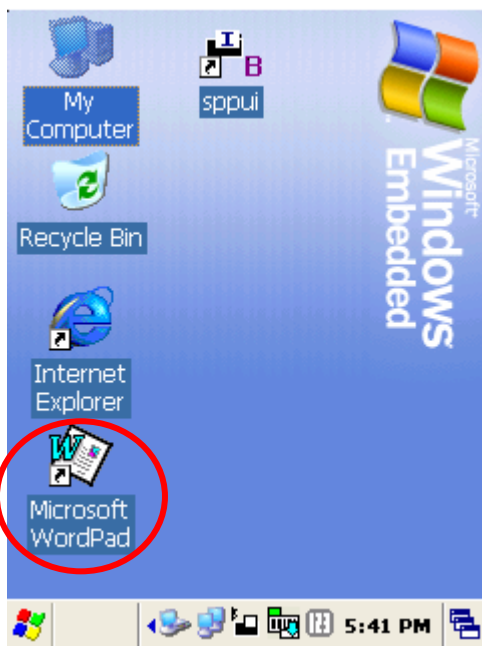
---

<sup>1</sup> Microsoft WordPad® is a registered trademark of Microsoft.

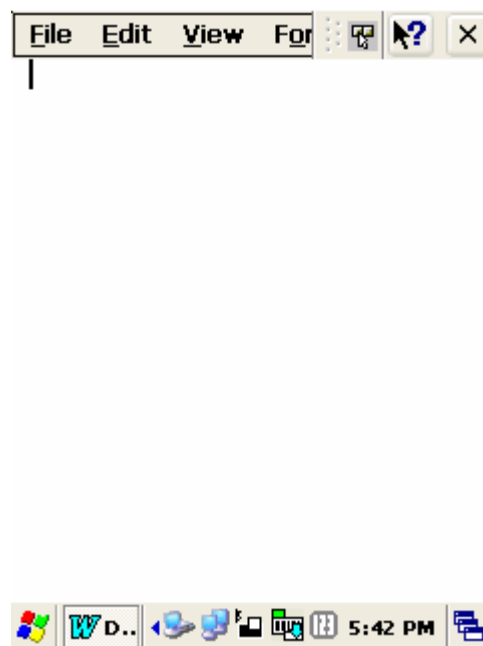
## 1) Using the keyboard

- Select the WordPad icon from the **Start** menu or tap the shortcut icon on the desktop screen to run **Microsoft WordPad®**, the document-editing program.

The pictures below illustrate how to use the screen shortcut for activating WordPad. By double tapping on the Microsoft WordPad® icon (Picture 12), the Microsoft WordPad® program will appear (Picture 13).





**Picture 12** WordPad shortcut



**Picture 13** New Document display

## OptimusPDA SP5700 Series User Manual

- Tap once on  at the bottom of the screen (see Picture 14). A keyboard should now appear. If this is not the case, press  until a drop-down menu appears. Then select **Keyboard**. Picture 15 shows the keyboard panel.




Picture 14 Keyboard Icon

Picture 15 Keyboard Panel

- With the keyboard display visible on the lower part of the screen, tap the buttons with characters to enter text into your document.

**Note:** You can also use the PDA's keyboard to input characters. The keyboard uses a numeric keypad that recognizes numbers (0~9). The keypad is color-coded to indicate particular actions that are taken when the **Shift** key is being pressed.

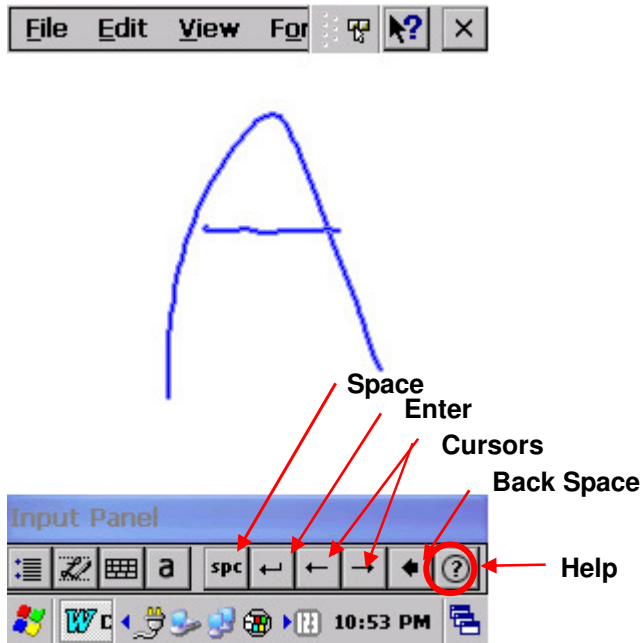
## 2) Using Transcriber program

- Keep the stylus on the  icon at the bottom of the screen.
- A drop down menu will appear; select the Transcriber shown in Picture 16.







**Picture 16** Transcriber Program selection

- Simply write on the screen with the stylus. Handwriting is converted into recognized characters shortly afterwards.



**Picture 17** Transcriber Program

The following icons will be shown at the bottom of the screen:

-  Options  
Set options of writing direction, inking, and shorthand.
-  Letter Shape Selection  
This allows user to adapt user's personal writing style to maximize recognition.
-  Mini Keyboard  
Quick input of numbers, punctuation, and other symbols.
-  Recognition Mode  
a: Alpha mode. Default mode to optimize recognition.  
123: Numeric Mode.  
A: Uppercase Mode. Transcriber automatically capitalizes all letters.

## 5.2 Barcode Scanning

### 5.2.1 Laser Scan Engine

- 1) Open the barcode scanning program from the shortcut on the screen.



**Picture 18** Barcode scan Test

- 2) Place the scanner in alignment with the barcode and press one of the scan trigger buttons. Ensure the **RED** laser beam line covers the barcode.

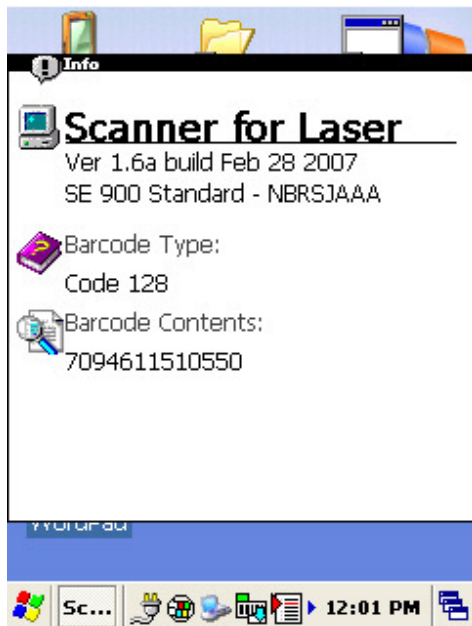
**! DO NOT KEEP THE SCAN BUTTON PRESSED FOR TOO LONG; IT MAY RESULT IN A SCAN ENGINE FAILURE OR MALFUNCTION.**



**Picture 19** Barcode scanning



3) A short beep sound indicates successful scanning and decoding of the bar code. The result will be displayed in the scan window.

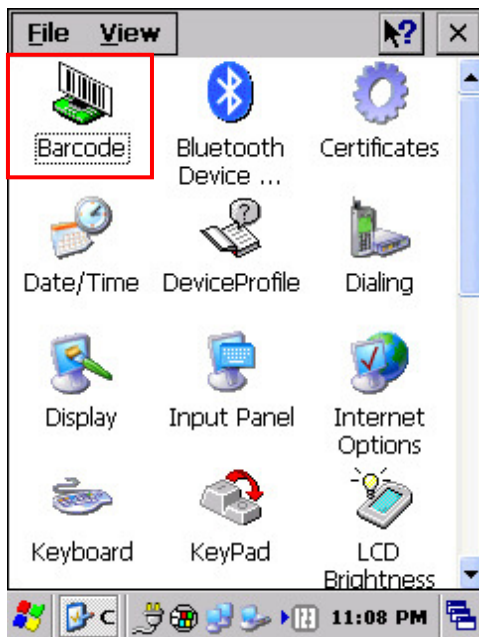


**Picture 20** Scanning result

#### 4) Barcode Setting Options

Bar code settings can be changed. This should ideally be done only by an administrator.

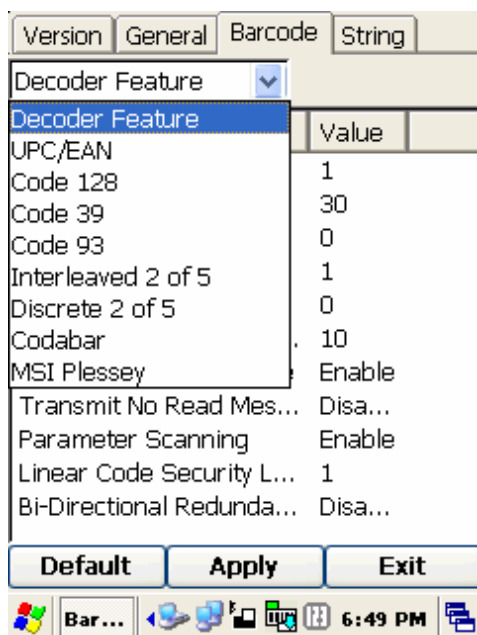
- Select Start → Settings → Control Panel
- Double tap Barcode icon
- Click Admin button and then password window pops up
- The password is 23646.
- Click OK then option taps appear.



Picture 21 Control panel



Picture 22 input password



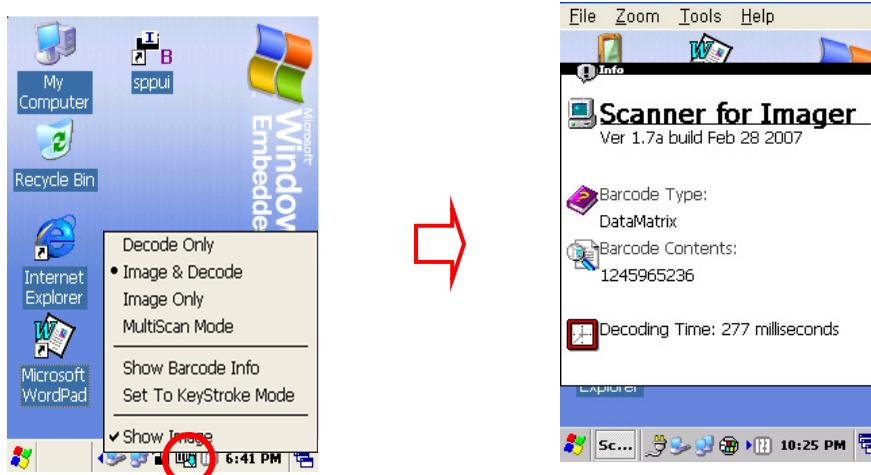
Picture 23 Barcode selection list

### 5) Readable codes

- **Linear Symbologies:** Codabar, Code 11, Code 128, Code 39, Code 93, EAN-8, EAN-13, Interleaved 2 of 5, ISBT 128, MSI, Reduced Space Symbology, Straight 2 of 5 IATA, UPC-A, UPC-E, UPC-E1

### 5.2.2 Image Scan Engine

1) Run the barcode image scanning program by tapping a shortcut on the background screen.



**Picture 24** Opening barcode image scan program

2) Place the scanner in alignment with the barcode and press one of the scan trigger buttons. Ensure the **Green** laser beam line covers the barcode being scanned.

**! DO NOT KEEP THE SCAN BUTTON PRESSED FOR TOO LONG AS THIS MAY RESULT IN A SCAN FAILURE OR DEVICE MALFUNCTION.**

3) A short beep sound indicates successful scanning and decoding of the bar code. The result will be displayed in the scan window.

4) In order to accelerate the decoding process, disable imaging in the Options menu.



**Picture 25** Disabling image function

5) Readable codes

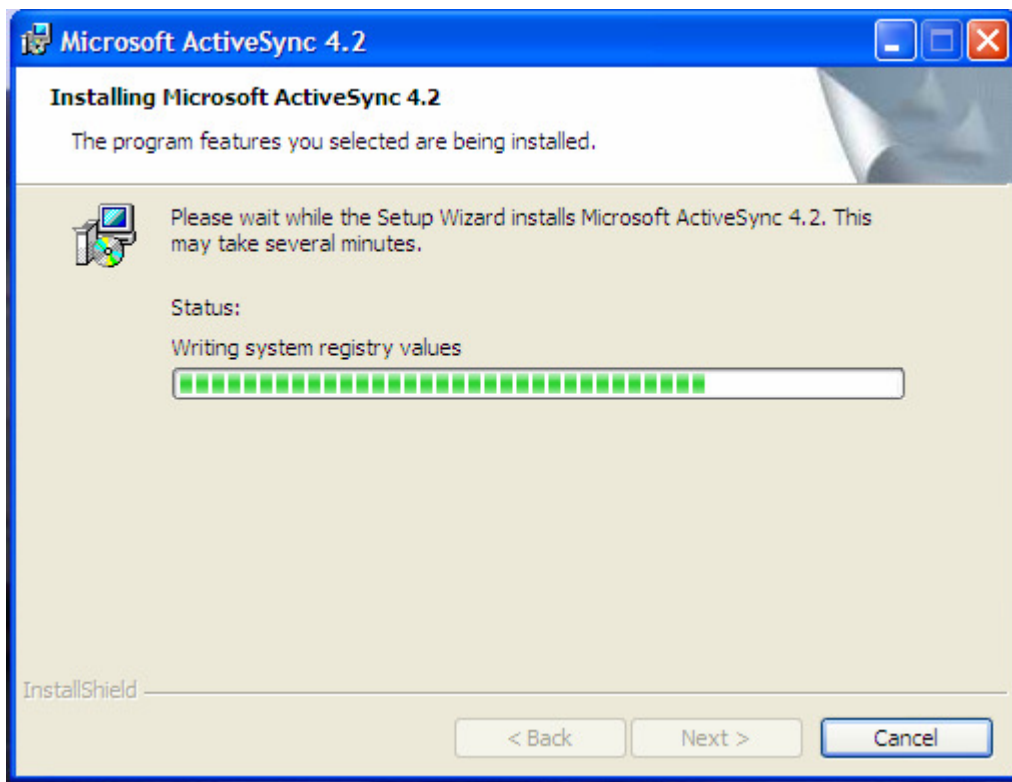
- **Linear Symbologies:** Codabar, Code 11, Code 128, Code 39, Code 93, EAN-8, EAN-13, Interleaved 2 of 5, ISBT 128, MSI, Reduced Space Symbology, Straight 2 of 5 IATA, UPC-A, UPC-E, UPC-E1
- **Stacked Symbologies:** Codablock F, Code 49, EAN-UCC Composite, Micro PDF417, PDF 417, TCIF Linked Code 39 (TLC39)
- **2D Matrix Symbologies:** Aztec Code, Aztec Mesa, Data Matrix, MaxiCode, QR Code
- **Postal Symbologies:** Australian Post, British Post, Canadian Post, Japanese Post, KIX (Netherlands) Post, Planet Code, Postnet,
- **OCR Fonts:** OCR US Money Font

### 5.3 Connecting to a Desktop

ActiveSync® is the software that allows users to move files between the OptimusPDA and a desktop PC as well as synchronise data. When the PDA's cradle and desktop computer are connected via a USB cable, inserting the PDA into the cradle automatically activates the Microsoft ActiveSync window, which appears on the desktop and indicates the synchronization status.

#### 5.3.1 Installing ActiveSync® on a Desktop

Insert the ActiveSync CD in the CD-ROM drive. The installation manager will lead you quickly through the installation process. You can also download the latest version of the software from the Microsoft website at <http://www.microsoft.com>

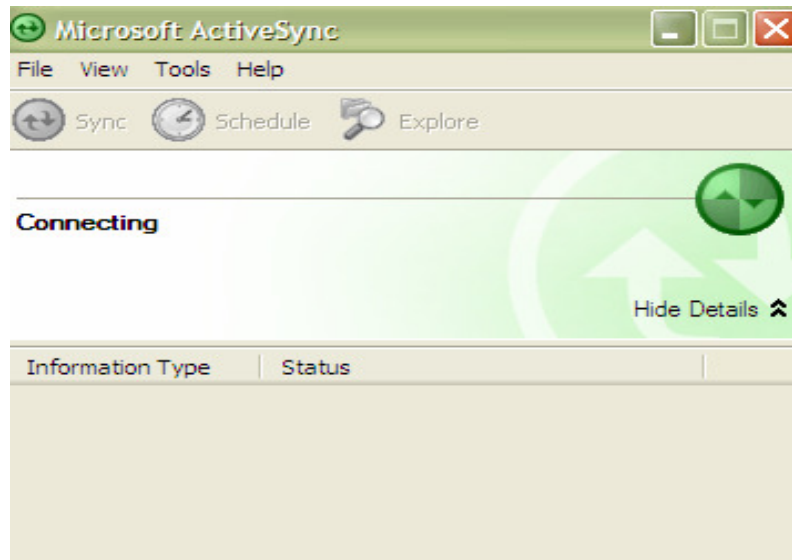


**Picture 26** ActiveSync 4.2 setup wizard

If the auto installation screen does not appear, click on the setup.exe file on the installation CD-ROM.

### 5.3.2 Setting up a partnership

With the cradle connected to a desktop computer via a USB or RS232, insert your OptimusPDA into its cradle. The desktop computer will display a window indicating that the PDA is being **connected**.



**Picture 27** Connection process

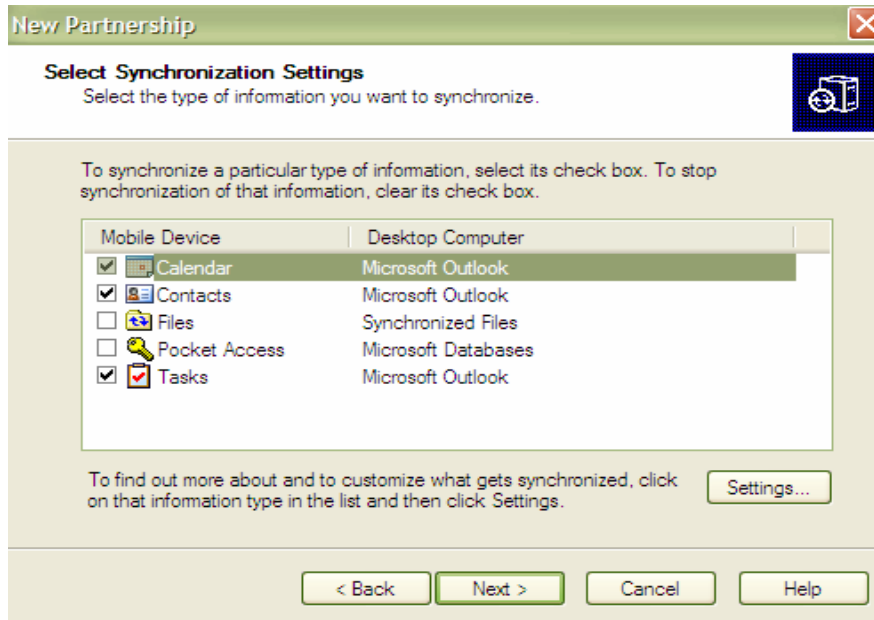
The desktop computer and your PDA will attempt to synchronize. When the "New Partnership" window appears, click **Yes** and then select **Next**.



**Picture 28** Partnership set up window

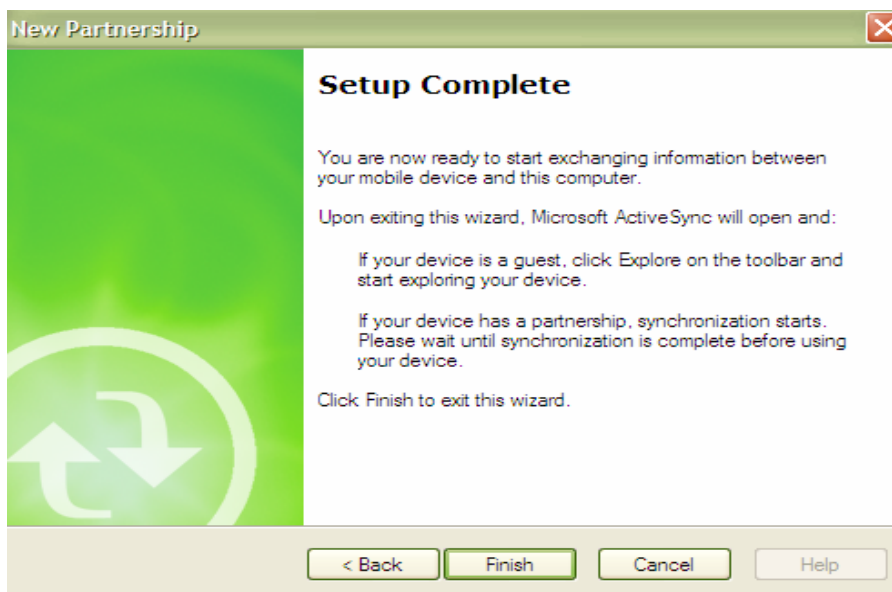
## OptimusPDA SP5700 Series User Manual

- The **Select Synchronization Settings** Window appears. Select the items you want to synchronize and then press the **Next** button.



Picture 29 Synchronization options

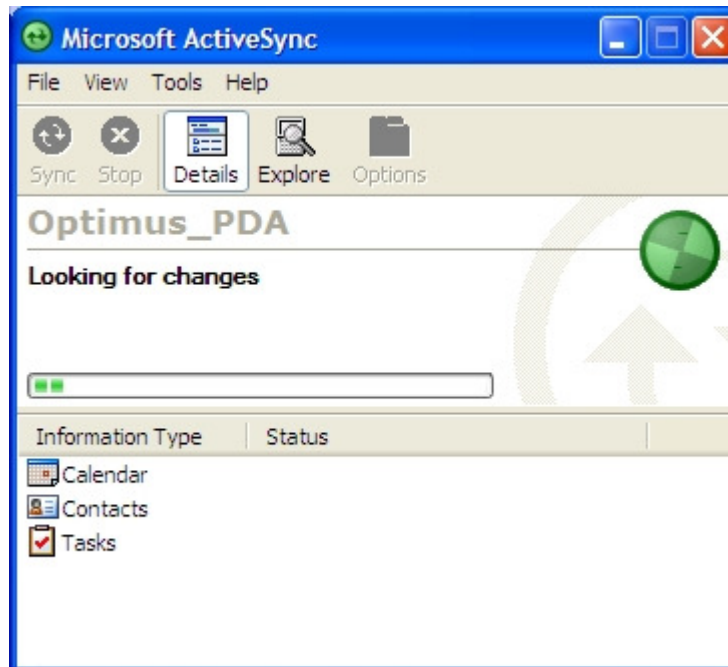
- To complete the process select the **Finish** button. The basic settings and configuration for a PC and the PDA connection will now be established.



Picture 30 Setup completion

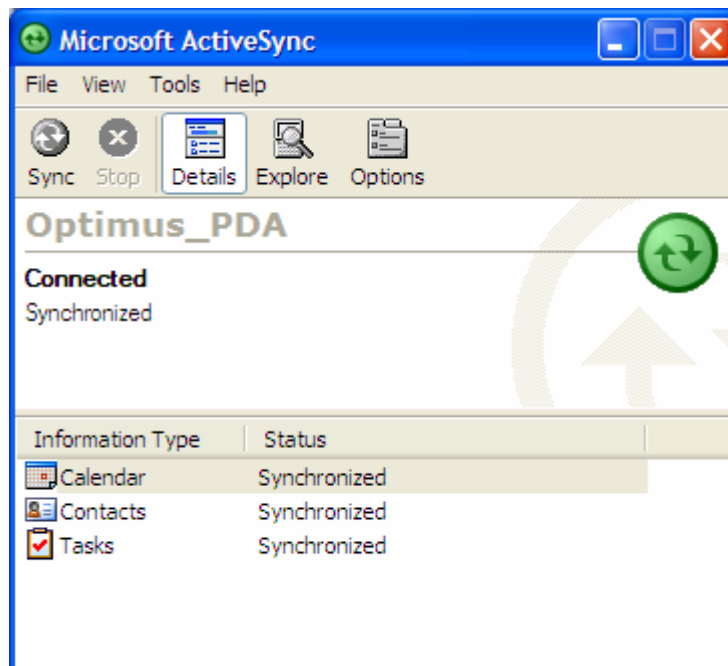
## OptimusPDA SP5700 Series User Manual

- Once a partnership is set up, synchronization between the PDA and the desktop computer can take place at any time by running ActiveSync® or by re-inserting the USB cable in to the desktop computer with the PDA in the cradle.



Picture 31 Synchronization process

- Once completed, the status window will show that synchronization is complete.



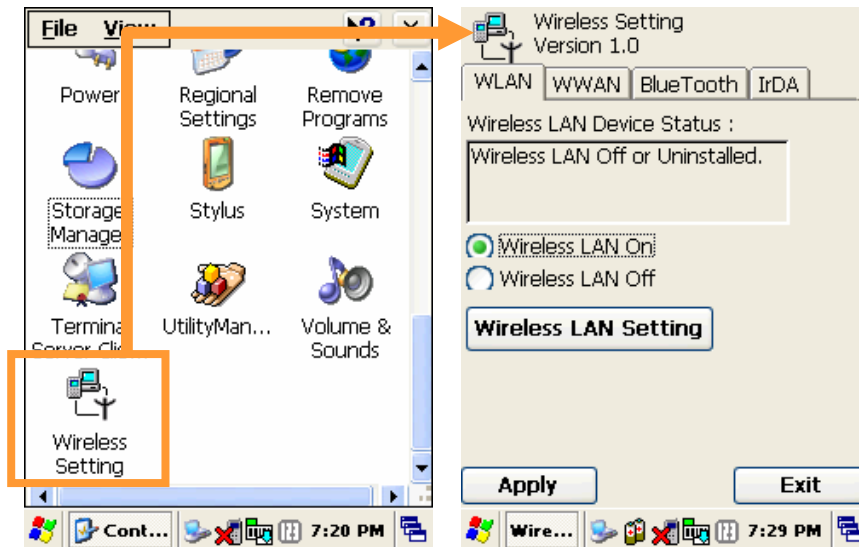
Picture 32 Synchronization status



## 5.4 Wireless Setting

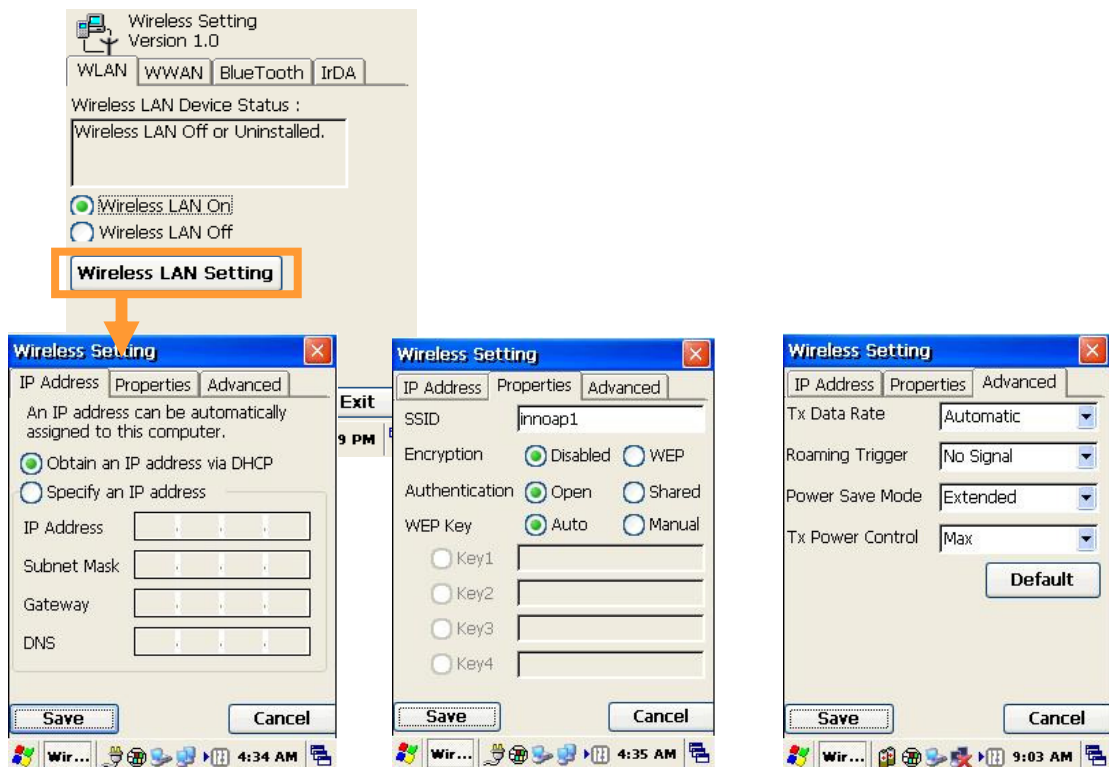
You can turn on/off wireless functions in Wireless Setting menu.

- Select **Start** → **Settings** → **Control Panel**
- Double tap the **Wireless Setting** icon.



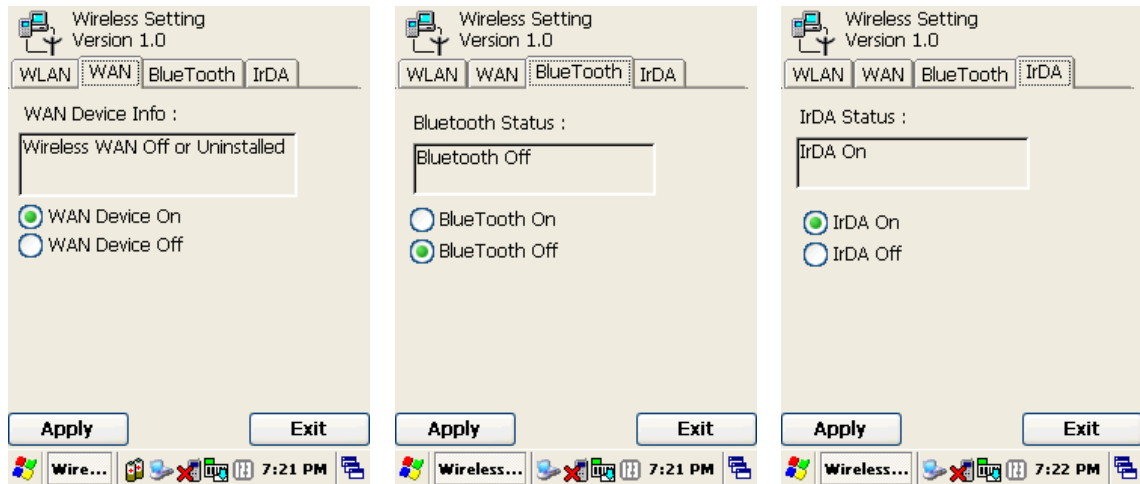
**Picture 33** Wireless Setting Icon

Once **Wireless LAN On** is selected, the **Wireless LAN Setting** button will be enabled.



**Picture 34** Enabling WLAN and changing settings

Click “Save” after changes have been made in each tab. The other wireless options are shown below.



**Picture 35** Wireless Functions On/Off

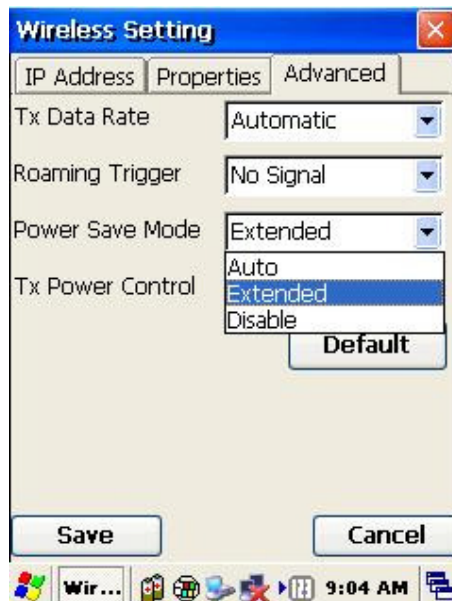
- **Power Save Mode for WLAN**

You can select options for saving battery life in Power Save Mode menu.

**Auto:** Power Save Mode activates when PDA is being used.

**Extended:** Power Save Mode is always active. (Maximum battery life saved)

**Disable:** Power Save Mode does not activate



**Picture 36** Power Save Mode options

## 5.5 Wireless LAN

With a wireless LAN enabled OptimusPDA, it is possible to access the internet wirelessly through the internal WLAN module. The PDA must be set up correctly including any Hotspot configurations. Follow the below steps to Configure your OptimusPDA for wireless LAN connection.

- Select **Start** → **Settings** → **Control Panel**
- Double tap the **Network and Dial-up Connections** icon.



**Picture 37** Network and Dial-up Connections icon

- Select the appropriate driver to configure for wireless connection.



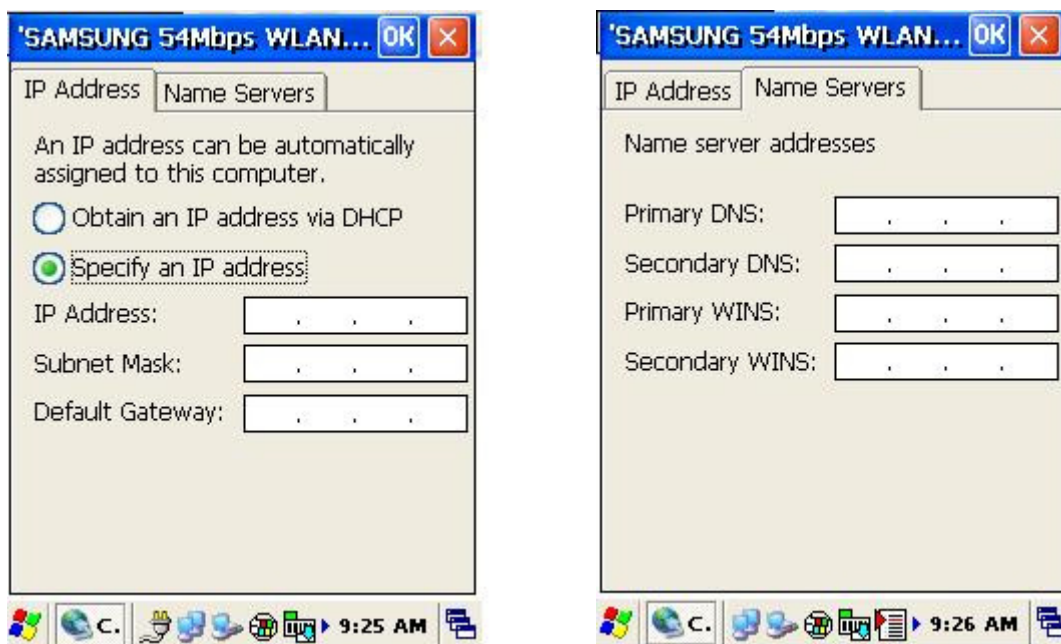
**Picture 38** Initializing connection process

- Select either to obtain an IP address via DHCP server or to manually specify an IP address.

Specifying an IP address is covered separately under “Static IP”


- **Static IP**

- Under the **IP Address** tab, select the **Specify an IP address** radio button. Enter the **IP Address**, **Subnet Mask** and **Default Gateway** data.
- Select the **Name Servers** tab, and enter the required data. You will need to consult the network manager for specific server address information.



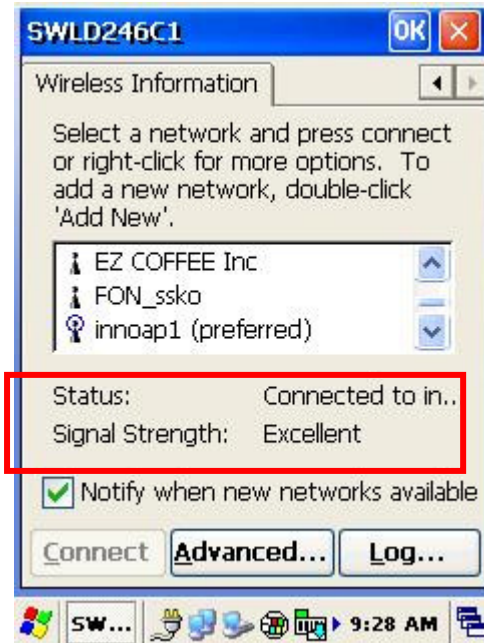
**Picture 39** IP address and server address assignment

## OptimusPDA SP5700 Series User Manual

- \* To check your network connection status, select the  icon on the Taskbar, and then click on the **Wireless Information** tab. The **Signal Strength** is indicated as **Very Good** or **Good** etc...



Picture 40 Network connection icon



Picture 41 Connection status

- To check the IP address data has been entered correctly, select the **IP Information** tab.

**Note:** IP address data is not lost when a soft reset is performed. However, it should be re-entered again, if a hard reset has been executed.

### 5.6 GSM / GPRS

The GSM/GPRS functionality allows your PDA to be used to make phone calls as well as send data over a cellular network at moderate 2.5G data speeds.

In order to set up a GPRS connection, it may be necessary to specify the Access Point Name (APN), user name and password, and very often IP address, all provided by the network operator.

### 5.6.1 Initializing the Modem






**Picture 42** Running Modem.exe from the desktop



**Picture 43** Open Modem.exe first display

When the PDA starts up, the **Modem.exe** is activated automatically and the GSM Module is initialized.

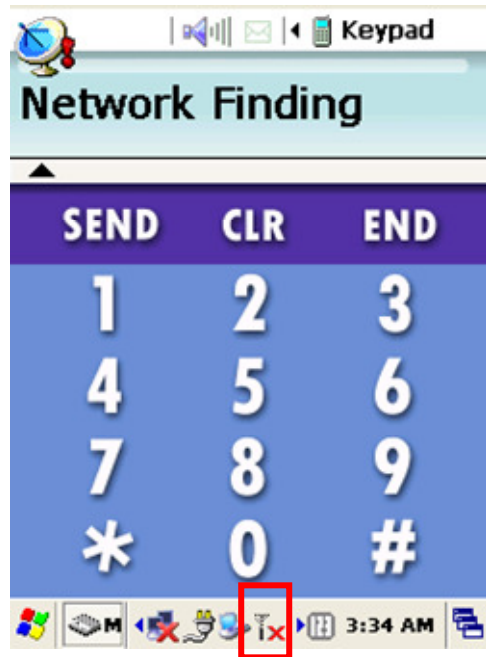
During this process the following icons may appear in the Taskbar:

-  : Modem suspended
-  : Modem activation in progress
-  : SIM card information is being loaded








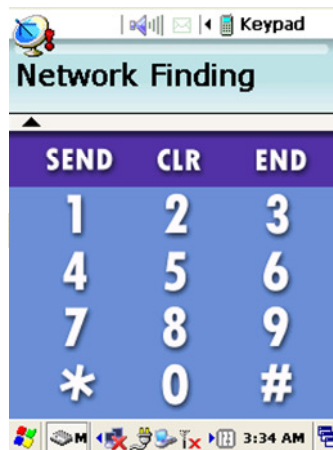
**Picture 44** Signal strength



**Picture 45** Connection quality

Antenna and signal icon indicates the signal strength as follows:

-  : Found signals only
-  : Found signals and identified an operator
-  : Service area not available



**Picture 46** Operating mode

You can switch the GSM Module on or off by pressing the “END” button for an extended period. After turning the GSM function off, the Modem will display the message “Modem Off”.

### 5.6.2 Checking Subscriber Identity Module (SIM)

As soon as the Phone User Interface starts, the program checks the stored SIM data. The SIM card may require PIN information to be entered in order to continue. To enter a PIN, select "Input PIN" and enter the required PIN as shown in pictures 49 and 50.



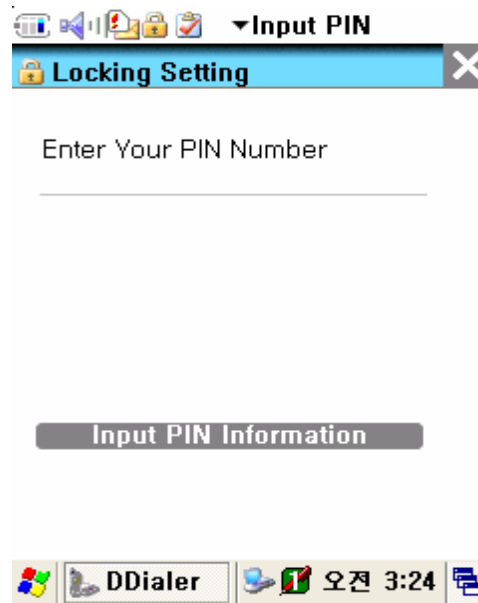
Picture 47 Request for SIM card insertion



Picture 48 Emergency calls availability



Picture 49 Request for PIN



Picture 50 Entering PIN data



### 5.6.3 Menu






**Picture 51** Display after connecting to a network

#### **Signal Indicator**


This is found in the tray at the bottom and shows the following icons:  
(Signal found : Operator found : Service not available ?)


#### **Ear volume status**


Is shown in the Phone UI at the top and shows the following icons:  
(Min :  , Med :  , Max :  )


#### **SMS memory status**

Has the following icons:

No unread messages : 

Single unread message : 

Multiple unread messages : 

SIM card is full (or in test mode) : 

## 1) Phone Setting Menu

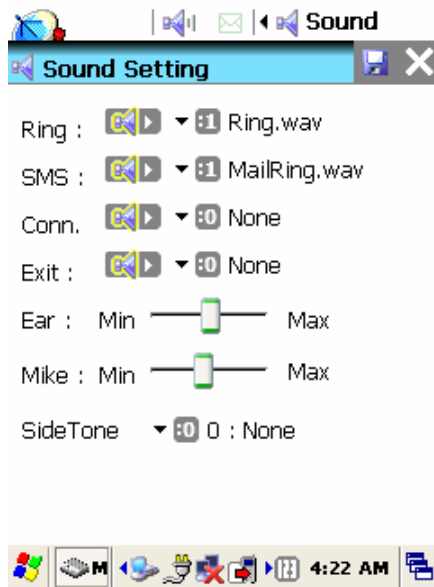
Click on the Phone Setting Menu Icon in the top right hand corner. The following menu will appear. The various menu options are discussed below.



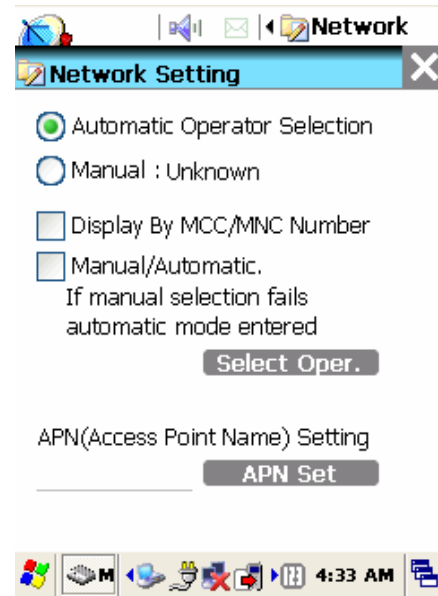
**Picture 52** Phone setup options

2) Setup options

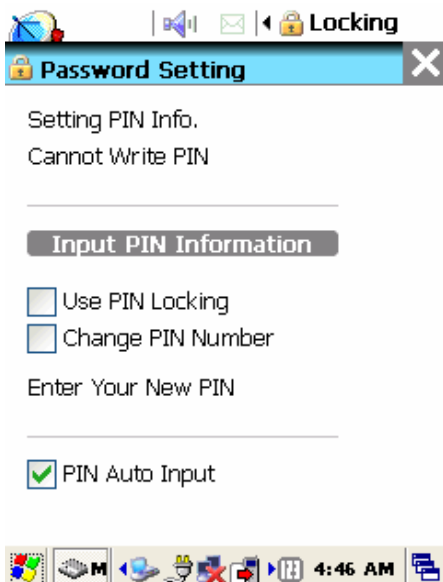
The Phone Setting Menu allows for configuration of sounds, network and SMS settings and Locking settings. Version info can also be viewed.



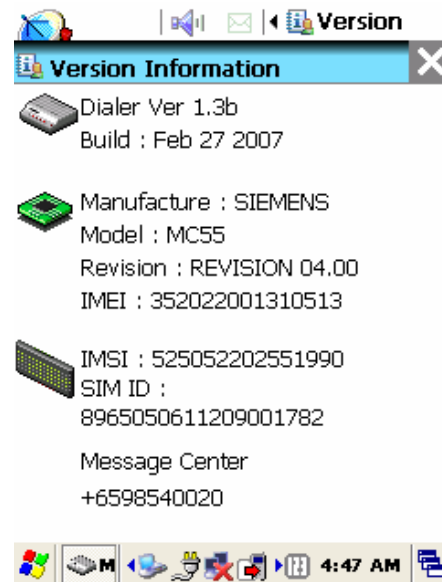
**Picture 53** Sound setup



**Picture 54** Network setup



**Picture 55** PIN edit



**Picture 56** Version info

## OptimusPDA SP5700 Series User Manual

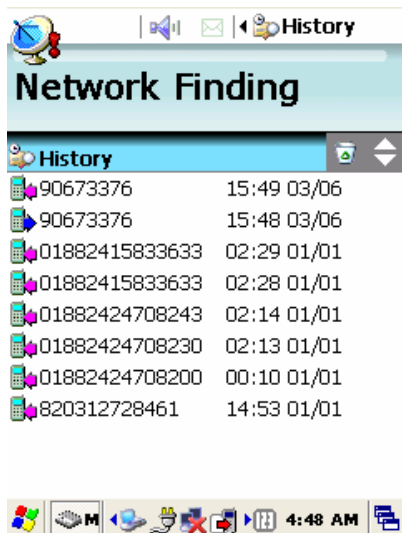
After making any changes, always click on the “save icon”.

### 3) User Interface options

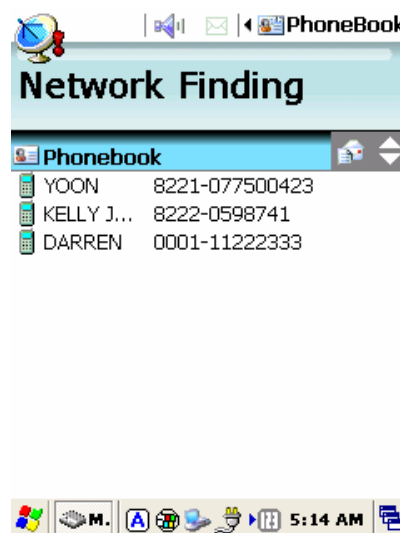
To access the phonebook, check out call history or view mailbox settings, select the relevant choice from the drop-down menu.



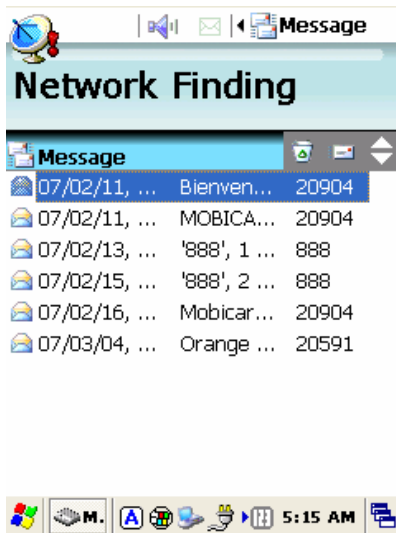
Picture 57 User Interface functions



Picture 58 History record



Picture 59 Phonebook



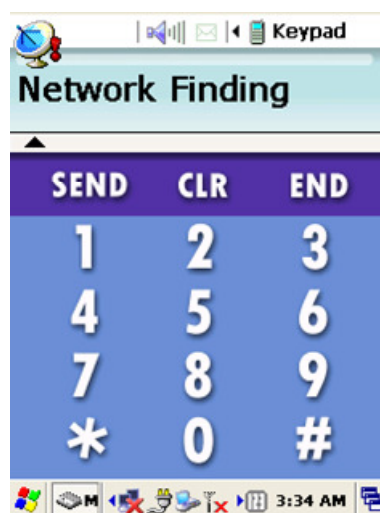
**Picture 60** Mailbox

- A) History: View call log history
- B) Phone Book: Displays list of callers along with their names and respective phone numbers
- C) Mail Box: Displays the SMS box and what has been sent/received.

### 5.6.4 Voice call

#### 4.1 Voice Dialing/Answering

If you want to make a call you should use the key pad or LCD touch-screen driven panel.



**Picture 61** Touch-screen keypad

## OptimusPDA SP5700 Series User Manual

- 1) Voice call: Use the keypad on the PDA and press “S” to make a call and “E” to end a call. Alternatively, use the LCD touch screen keypad.
- 2) Volume: Use the 4-way direction key pad to increase (Up) or reduce (Down) volume.

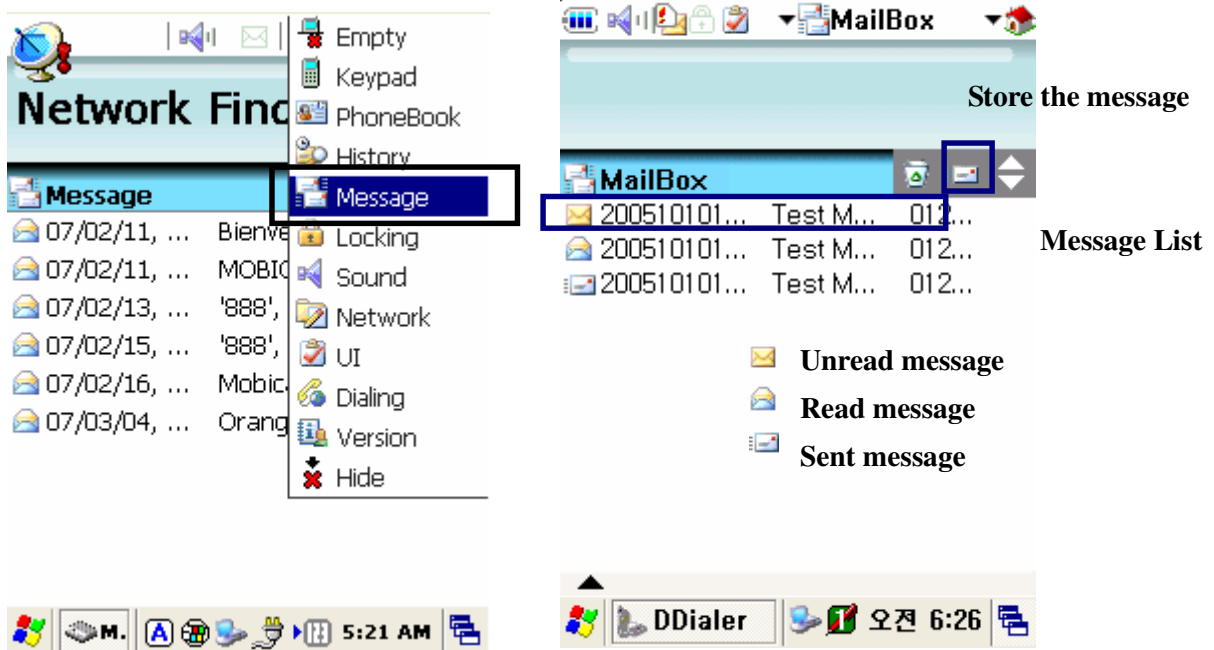


Picture 62 Keyboard

### 5.6.5 Short Message Service

#### Reading Stored SMS texts

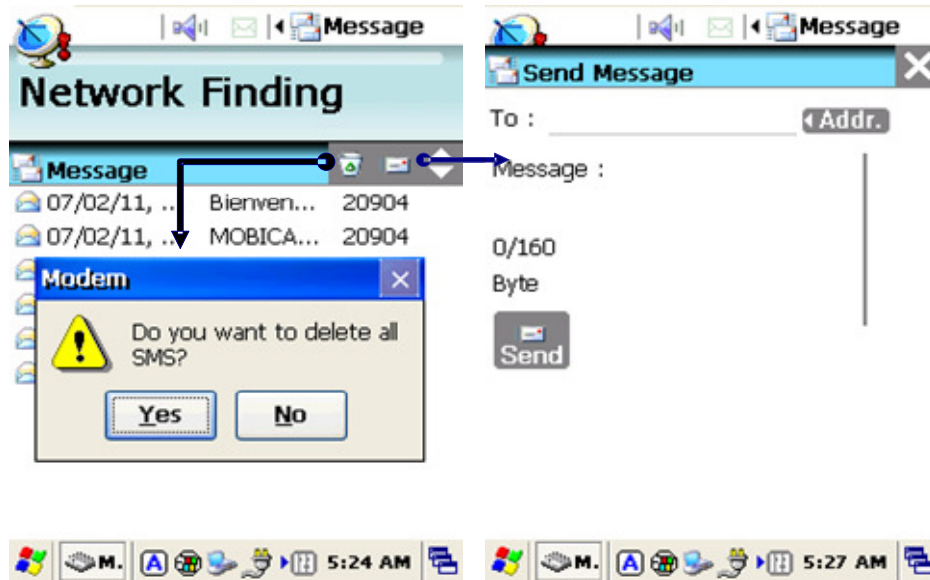
To read a stored SMS, simply access the Mailbox and select the relevant SMS message. Once the message is open to be read, it can also be forwarded.




Picture 63 Mailbox display

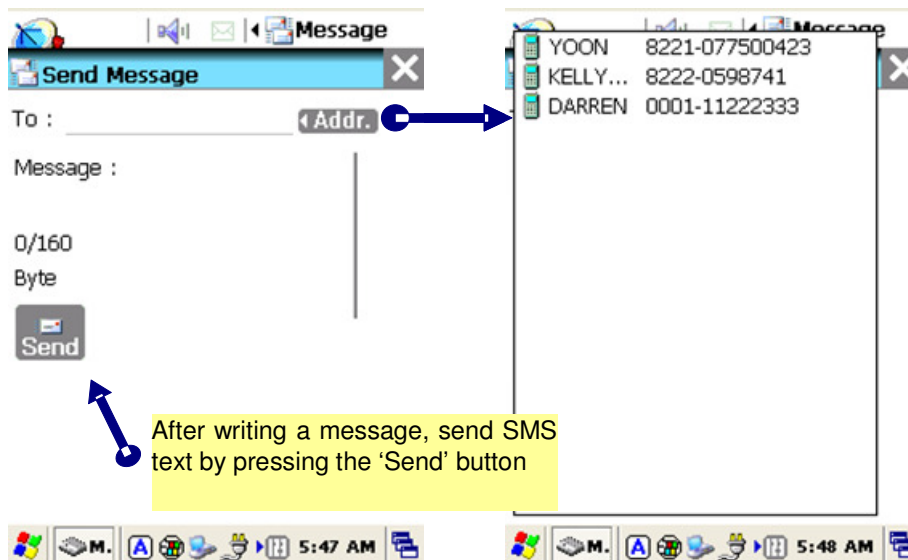
**Sending a Message**

To send a message, first go to the Mailbox. Then tap the envelope icon. The Message Detail window will then open allowing standard SMS details to be entered.



**Picture 64** Mailbox and SMS windows


- To send a message, tap on the  icon to write a message
- In the **Blue Box**, write a message
- Press the **Send Message** button to initiate transmission process

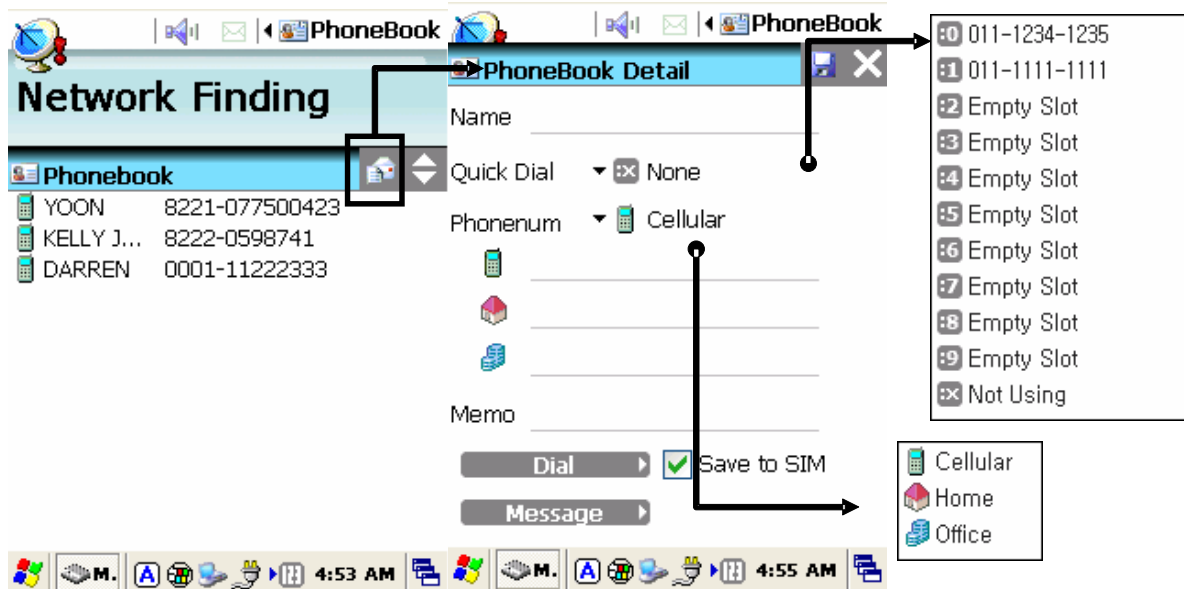


**Picture 65** Editing text and addressing SMS

### 5.6.6 Phonebook

#### How to Add a New Phone Number

1. Open up the phone book window by selecting it from the UI Menu at the top.
2. Tap on the  icon to add a new address
3. Enter phone number and other information into the “Address Detail” window
4. Specify a “Quick Dial” number, or select primary phone number among cellular, home and office phones

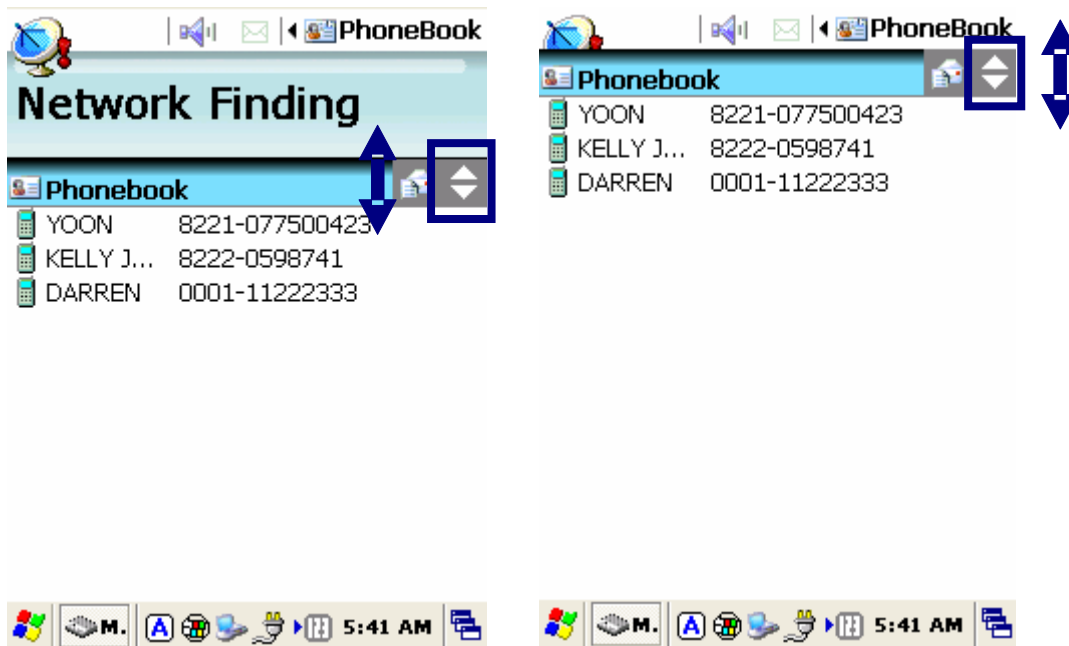


**Picture 66** Adding a new contact



## OptimusPDA SP5700 Series User Manual

The entire list of contacts can be viewed by clicking on the two way icon arrow.

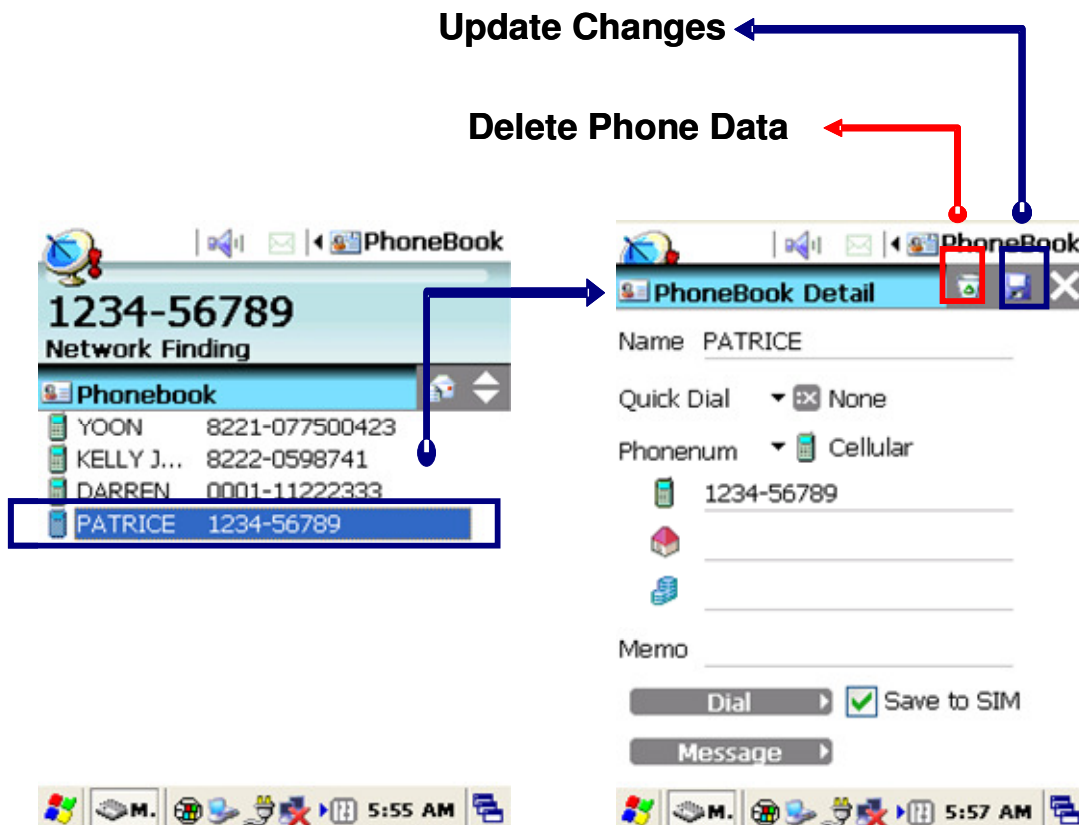


Picture 67 Phonebook content


### Updating Phone Numbers

To modify any of the phone contacts simply click on the specific contact within the phone book. The address detail screen will be shown.

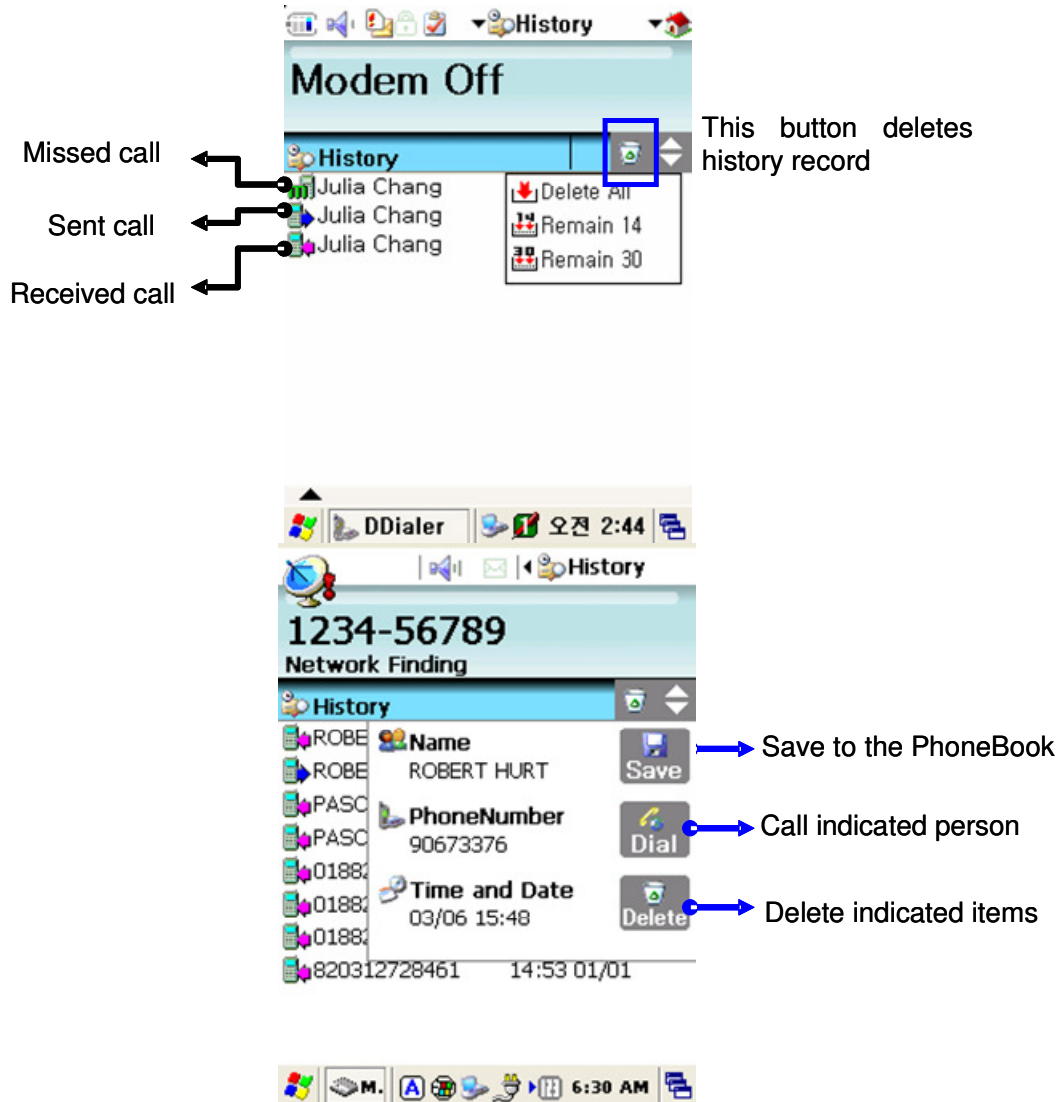
Once changes have been made, click on the save icon. Clicking on the bin will delete the contact.



**Picture 68** Management of phonebook numbers

- ① Select Phone Book
- ② Select phone number
- ③ When the "Address Detail" screen appears, update phone number information, delete selected item, or save changes by tapping the  icon

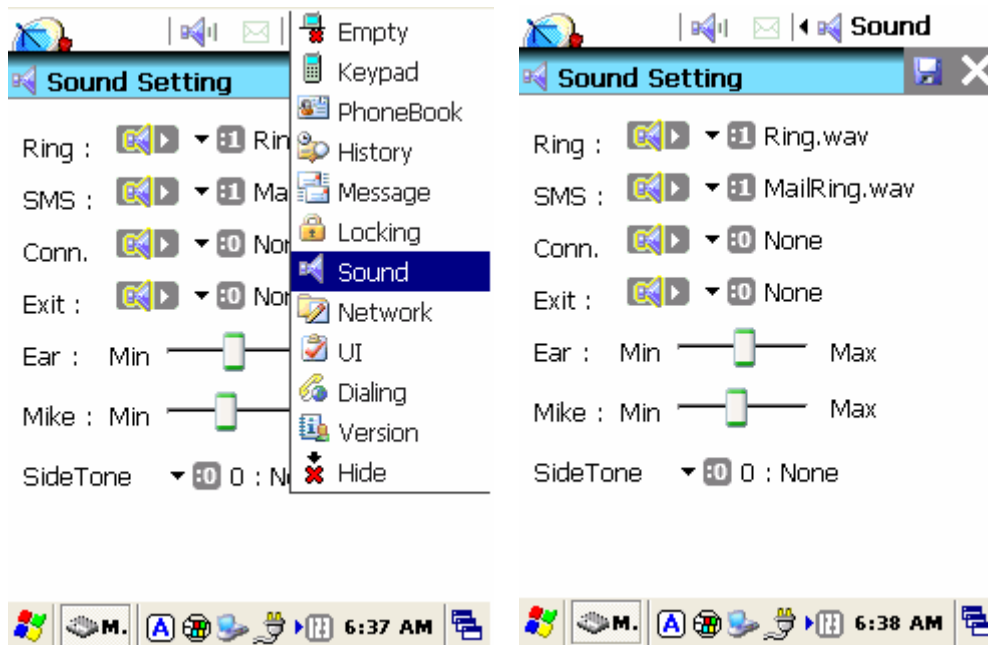
**5.6.7 History**



**Picture 69** Tracking history records

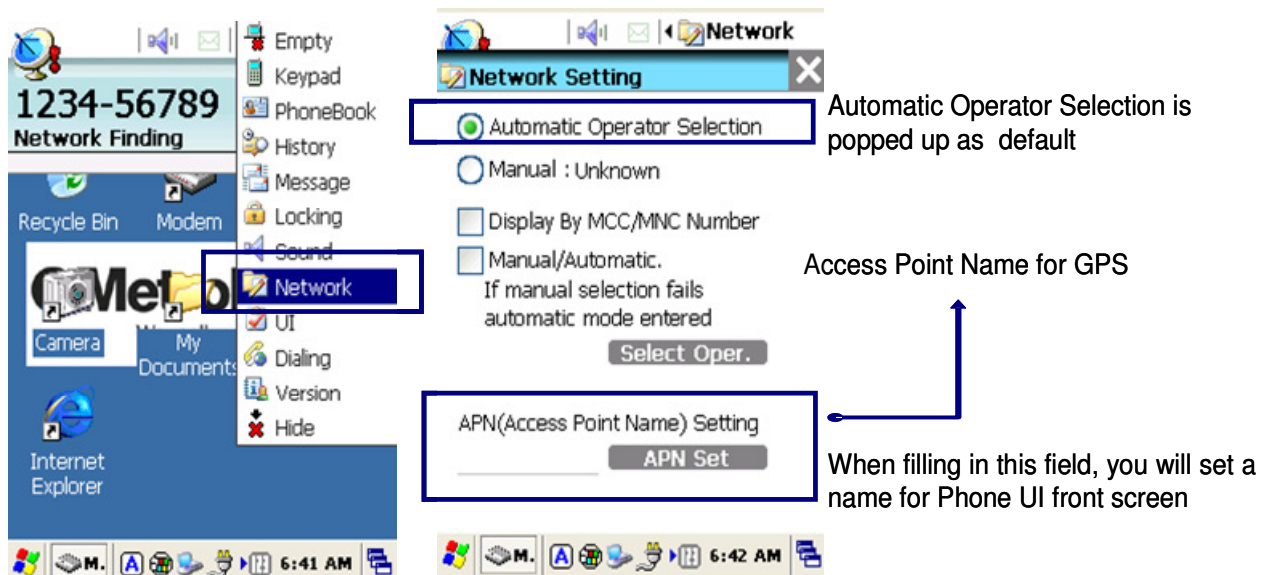
### 5.6.8 Sound Settings

The sound setting window allows you to change sounds such as the Ring tone, Message Notification Sound and Network Register Sounds as well as other volume parameters.

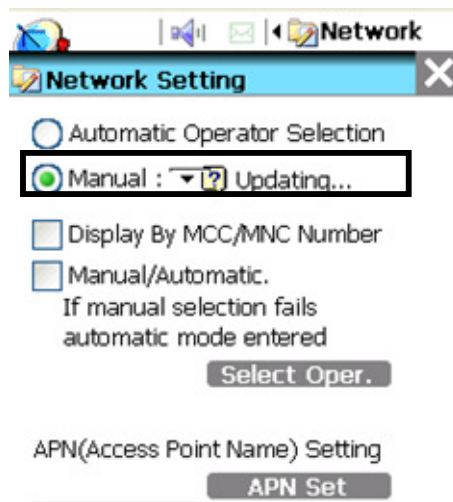


**Picture 70** Sound configurations

### 5.6.9 Setting the Wireless Network



Picture 71 Network advanced settings

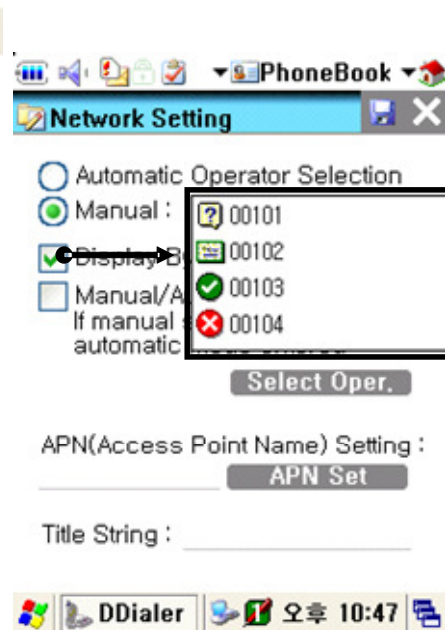
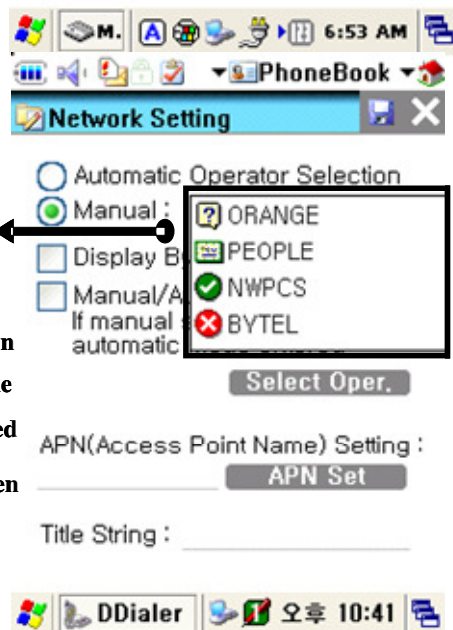


Selecting manual Operator mode starts the system search for operators

With 'Display by MCC/MNC Number' selected the MCC/MNC value will be displayed.

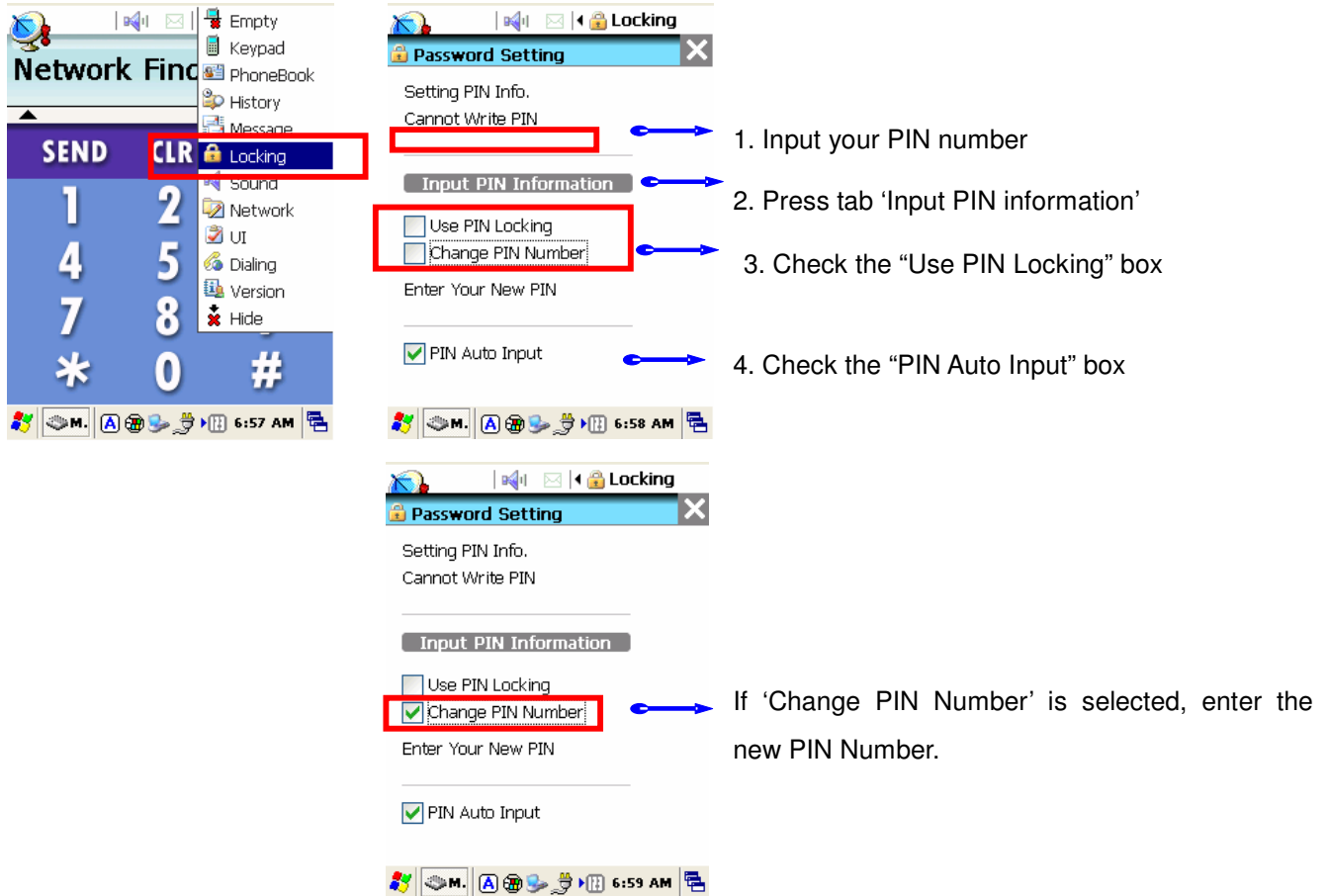
Icons indicate operator status

- Unknown
- Available
- Connected
- Forbidden



**Picture 72** Connecting to network in manual mode

**5.6.10 How to Lock the Menu**



**Picture 73** Locking menu values

### 5.6.11 Connecting to GPRS Network

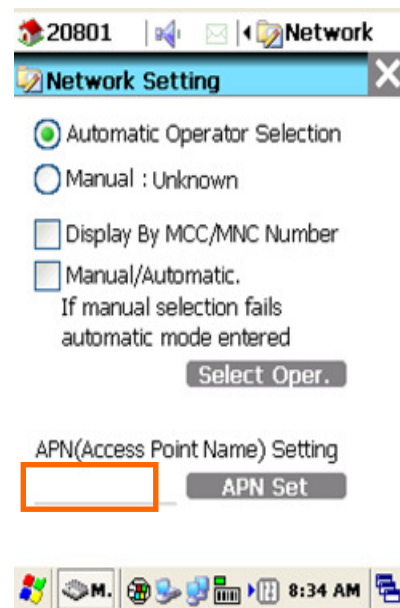
To establish a new GPRS network, the Access Point Name (APN) should first be set.

#### 1. How to set up GPRS Connection.

##### 1. APN setting.



Setting APN on DDialer.



Input APN No on the above blank then click APN Set button



## 2. Setting GPRS Dialup Network

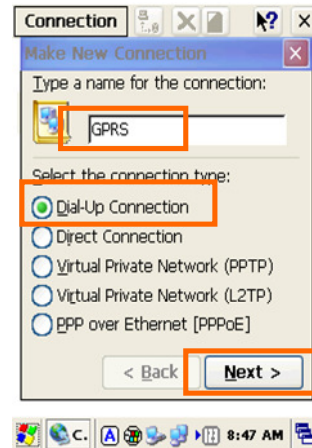
### 2. Setting GPRS Dialup Network Connection.



1. Settings and Network and Dial-Up Connection



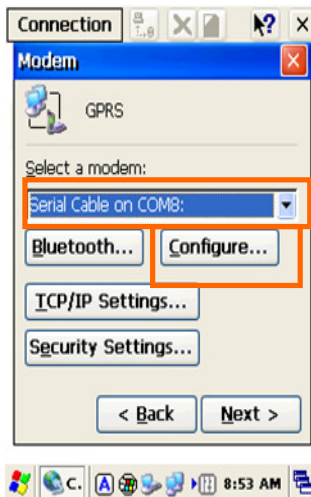
2. Click "Make New Connection".



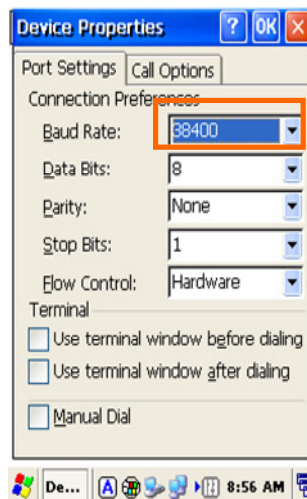
3. Make a name for connection .

## 2. Setting GPRS Dialup Network

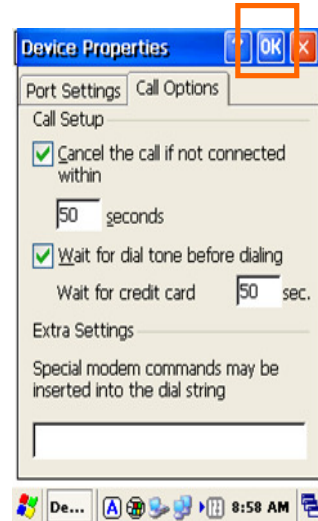
### 3. Setting GPRS Dialup Network Connection.



4. Select modem as COM8 and Click the Configure.. button



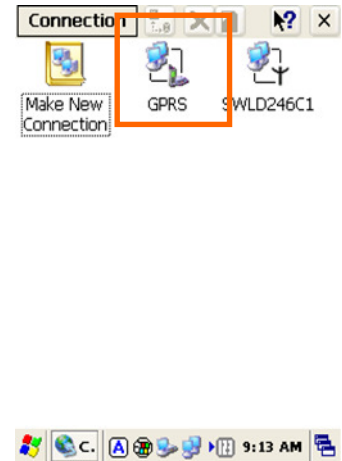
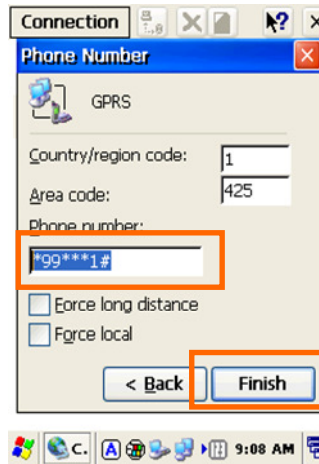
5. Setting the Band Rate



6. Setting Call Option then OK button

## 2. Setting GPRS Dialup Network

### 4. Setting GPRS Dialup Network Connection.



7. Click the Next button

8. Setting Phone Number “ \*99\*\*\*1# “

9. Finish the setting

It doesn't matter Country or Area Code

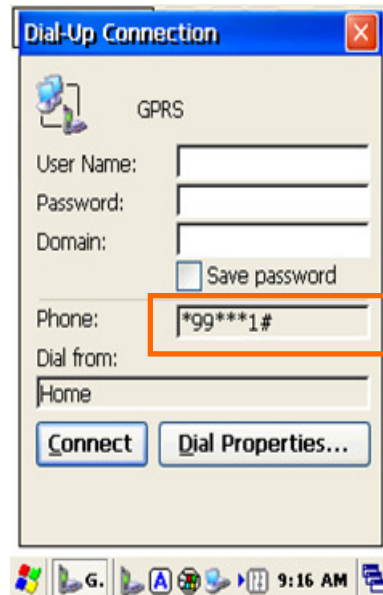
Then click the Finish button

## 2. Setting GPRS Dialup Network

### 5 Checking the GPRS properties



### 10. Double Click the GPRS Icon



### 11. Checking the above number

## 6. Troubleshooting

The following table lists common issues that may occur along with possible solutions. Please contact Metrologic if an issue occurs which is not covered here

| Problem  | Cause  | Solution   |
|--|--|--|
| <b>OS is not loading</b>                                       | <i>Low-Battery</i>   | Charge or replace the battery.   |
|  | <i>Problem with <b>Reset</b> button's rubber</i>                 | If reset rubber can be pressed with your finger, then cut the tip of the rubber.   |
|  | <i>Battery malfunction</i>                                       | Remove the battery from the PDA and do a soft reset. Then re-insert the battery into the PDA.  |
| <b>PDA turns itself off</b>                                    | <i>OptimusPDA is inactive (Sleep Mode)</i>                       | PDA turns off after a period of inactivity. The period can be set under Settings-Power. Press the power button to turn the PDA on and return it to its previous status (prior to going in to sleep mode).  |
| <b>Battery does not charge</b>                                 | <i>Battery failure</i>   | Replace battery. If your terminal still does not operate, try a hard reset.  |
|  | <i>Device was removed from cradle while battery was charging</i> | Re-Insert your PDA into the cradle. Ensure that the PDA is turned off or in a sleep mode while being charged.  |
|  | <i>I/O connector is not clean</i>                                | Clean up the I/O connector.  |
| <b>Characters on display are invisible</b>                     | <i>PDA is not powered on</i>                                     | Press the <b>Power</b> button.   |
|  | <i>Battery is not charged</i>                                    | Charge the battery.  |
| <b>Communication failure with IrDA printer</b>                 | <i>IP error</i>  | Fix the static IP address.   |
|  | <i>IP crash</i>  | Check whether more than two users work under the same static IP address.   |
| <b>The stylus pen does not tap correctly</b>                   | <i>Shortcut icons do not activate the corresponding function</i> | Select <b>Start</b> → <b>Settings</b> and double tap on <b>Stylus</b> . Then recalibrate the stylus.   |
| <b>A message appears stating that your PDAs memory is full</b> | <i>Too many files stored in memory module</i>                    | Delete unused files or transfer data to your PC.   |
|  | <i>Memory allocation is too low</i>                              | Adjust the memory allocation. Tap <b>Start</b> → <b>Settings</b> → <b>Control Panel</b> , then double tap the <b>System</b> tab. Select <b>Memory</b> and adjust the slider.   |
|  | <i>Too many applications are installed on your OptimusPDA</i>    | If you have installed new applications on your PDA, remove unused applications to extend memory capacity. Tap <b>Start</b> → <b>Settings</b> → <b>Control Panel</b> , and double tap <b>Remove Programs</b> . Then select unused programs and tap on <b>Remove</b> button. |

| Problem   | Cause  | Solution  |
|---|--|---|
| <b>Your PDA does not accept scan data input</b> | <i>Scan window is dirty</i>  | Clean scanner window with a soft, wet cloth.  |
|   | <i>Object moves while scanning</i>   | Fix the object while scanning.  |
|   | <i>Scanning application is improperly opened</i>                           | Tap on <b>Start</b> , then <b>Settings</b> → <b>Control Panel</b> , and select the <b>System</b> tab to verify whether the unit is loaded with a scanning application or not. |
|   | <i>Unreadable barcode</i>  | Scan engine cannot read damaged barcodes.   |
|   | <i>Distance PDA and the object too far or too close</i>                    | Adjust the distance between them at approximately 6 inches, and try again.  |
|   | <i>PDA is not programmed for the barcode</i>                               | Check whether your PDA is programmed to read the type of barcode you are scanning.  |
|   | <i>Scanning beam not aligned with a barcode</i>                            | Angle the barcode at 45 degrees or place scan beam against a barcode to use direct rays.  |
| <b>ActiveSync does not operate</b>              | <i>OptimusPDA was removed from the cradle during communication process</i> | Insert your PDA into the cradle again.  |
|   | <i>Incorrect cable</i>   | Verify cable is correct and is properly connected.  |
|   | <i>ActiveSync is incorrectly installed or configured</i>                   | Install the ActiveSync program again.   |
|   | <i>Connected as a Guest, not by previously created name</i>                | Take the terminal out, then insert it the cradle again and enter your name again.   |
| <b>Sound is not audible</b>                     | <i>Volume level is very low or turned off</i>                              | Check the volume slider in <b>Volume &amp; Sounds</b> (Tap on <b>Start</b> → <b>Settings</b> → <b>Control Panel</b> ) to ensure the volume is at adequate level.              |
|   | <i>Dust fills the speaker</i>  | Clean the speaker.  |
| <b>Program does not recognize handwriting</b>   | <i>Characters are written incorrectly</i>                                  | To recognize handwriting input, characters must be written carefully, in a certain way.   |
|   | <i>Character strokes are written on the wrong part of the LCD</i>          | Fix the letter recognizer.  |

**Table 1** Solving problems

## 7. Specifications

### 7.1 Physical Characteristics

|                               |   |
|-------------------------------|---|
| Dimensions*                   | 78 W × 177 L × 34 H (Top); 26 H (Bottom) mm / 3.1 x 7.0 x 1.3 x 1.0 in.   |
| Weight *                      | 256g / 9.03oz. (WLAN, WPAN, Camera, Scanner Included/ Except Battery)   |
| Drop Specification            | 1.5m / 5 ft onto Concrete Surface (Double Drop for Every Side)  |
| Operating Temperature         | -20 ° to 50 °C (-4 ° to 122 °F)   |
| Storage Temperature           | -30 ° to 70 °C (-22 ° to 158 °F)  |
| Environmental Sealing         | IP54 (Dust and Water Splash Protected)  |
| Humidity                      | 5% to 95% RH Non-condensing   |
| Electrostatic Discharge (ESD) | 8KVDC/Air, 4KVDC/Contact  |
| Key Pad                       | 2 Triggers, Power, Backlight (LED Backlight Supported), Start, End, 4 Way Navigation Pad, Shift, Function, Backspace, Enter, 12 User-selectable Keys (Numeric, English) |

**Table 2** Physical specifications

\* Subject to change without prior notice.

### 7.2 Performance

|                         |  |   |
|-------------------------|--|---|
| CPU                     | Intel XScale PXA270 microprocessor (520MHz)  |   |
| Operating System        | Microsoft Windows CE™5.0   |   |
| Memory (ROM/RAM)        | - Flash ROM: 128 MB<br>- SDRAM: 128 MB   |   |
| Display                 | - 3.5" TFT Color LCD (Transflective Type)<br>- Resolution: 240 x 320 pixels  |   |
| Standard Communications | RS232, USB v1.1(Host, Client), IrDA v1.2   |   |
| Sound (MIC and Speaker) | Water-proof, Internal Microphone and Speaker for Voice Recorder  |   |
| Expansion Slot          | MiniSD card slot, SIM slot   |   |
| Radio Capacity          | - WWAN: GSM/GPRS (Optional)<br>- WLAN: IEEE802.11b/g (Up to 11Mbps/54Mbps) (Optional)  |   |
| Barcode Scanner         | 1D Barcode: UPC/EAN/KAN, Code 39/ 93/ 128, Interleaved 2 of 5, etc.<br>2D Barcode: PDF417, QR Code, Data Matrix, Maxi Code, etc. |   |
| SW                      | - Desktop device manager: Microsoft® ActiveSync  |   |
| Application Development | - Microsoft Windows CE SDK, Metrologic SDK   |   |
| Battery                 | Main Battery   | Rechargeable Li-Ion Battery (3.7VDC, 2000mAh) |
|                         | Back-up Battery  | Rechargeable Battery (3.7V, 130mAh)           |
|                         | Battery Life   | 3 - 72 hours                                  |
|                         | Charge Time  | Less then 3 Hours                             |

**Table 3** Hardware specifications



# 8. Limited Warranty Statement

### General

This Limited Warranty applies to the Metrologic brand name products sold with this Limited Warranty Statement.

This Limited Warranty may be enforced in any country where Metrologic or its authorized service providers offer warranty service subject to the terms and conditions set forth in this Limited Warranty Statement.

However, warranty service availability and response times may vary from country to country and may also be subject to registration requirements in the country of purchase.

Metrologic warrants that the Metrologic product you have purchased from Metrologic or from an Metrologic authorized reseller is free from defects in materials and or workmanship under normal use during the warranty period.

The warranty period starts on the date of purchase from Metrologic or from a Metrologic authorized reseller. You dated sales or delivery receipt, showing the date of purchase of the product, is our proof of purchase date.

During the warranty period, Metrologic will repair or replace the defective parts with new parts, or, at Metrologic's discretion, used parts that meet or exceed performance specifications for new parts. All parts or products removed under this warranty become property of Metrologic. The replacement part or product takes on the warranty status of the removed part or product. In the unlikely event that your Metrologic product has a recurring failure, Metrologic, at its discretion, may elect to replace your product with comparable product. This is your exclusive remedy for defective products.

Before returning any unit for service, be sure to back up data and remove any confidential, proprietary, or personal information. Metrologic is not responsible for damage to or loss of any programs, data or removable storage media.

This Limited Warranty does not apply to expendable parts. This Limited Warranty does not extend to any product from which the serial number has been removed, damaged or rendered defective (a) as a result of accident, misuse, abuse, or other external causes;(b) by operation outside the usage parameters stated in the user documentation that shipped with the product; (c) by the use of parts not manufactured or sold by Metrologic; or (d) by modification or service by anyone other than (i) Metrologic, (ii) a

Metrologic authorized service provider or (iii) your own installation of end-user replaceable parts if available for your product in the servicing country.

### Limitation of Liability

Metrologic is not liable for any damages caused by the product or the failure of the product to perform, including any lost profits, lost savings, incidental damages, or consequential damages. Metrologic is not liable for any claim made by a third party or made by you for a third party.

This limitation applies whether damages are sought, or a claim made, under this Limited Warranty or as a tort claim (including negligence and strict product liability), a contract claim, or any other claim. This limitation can not be waived or amended by any person. This limitation of liability will be effective even if you have advised Metrologic or an authorized representative of Metrologic of the possibility of any such damages. This limitation of liability, however, will not apply to claims for personal injury.

EXCEPT AS EXPRESSLY SET FORTH IN THIS LIMITED WARRANTY, METROLOGIC MAKES NO OTHER WARRANTIES, EXPRESSED OR IMPLIED, INCLUDING ANY IMPLIED WARRANTIES OF MERCHANTABILITY AND FITNESS FOR A PARTICULAR PURPOSE. METROLOGIC EXPRESSLY DISCLAIMS ALL WARRANTIES NOT STATED IN THIS LIMITED WARRANTY.

ANY IMPLIED WARRANTIES THAT MAY BE IMPOSED BY LAW ARE LIMITED TO THE TERMS OF THIS WORLDWIDE LIMITED WARRANTY STATEMENT.

Some states or countries do not allow limitation on how long an implied warranty lasts or the exclusion or limitation of the incidental or consequential damages for consumer products. In such states or countries, some exclusions or limitations of this Limited Warranty may not apply to you. This Limited Warranty gives you specific legal rights.

You may also have other rights that may vary from state to state or from country to country. You are advised to consult applicable state or country laws for a full determination of your rights.

### Options and software

The warranty terms and conditions for Metrologic options are as indicated in the Limited Warranty



## *OptimusPDA SP5700 Series User Manual*

Statement applicable to Metrologic options. Metrologic's only obligations with respect to software distributed by Metrologic under the Metrologic brand name are set forth in the applicable end-user license or program license agreement. Non-Metrologic hardware and software products are provided "AS-IS." However, non-Metrologic manufacturers, suppliers, or publishers may provide their own warranties directly to you.

### **Warranty Period**

The warranty period for this product is one (1) year from the date of product purchase. This warranty does not extend to expendable parts.

### **Types of Warranty Service**

If your product needs service, call the Metrologic After-sales Service Dept. in your country or state at the number listed in the Contacting Customer Support in later section. A technical support specialist will help you diagnose the problem.

### **Carry-in Warranty service**

Carry your product into Metrologic Authorized Center of warranty repair. To locate the service provider nearest you, access the service provider's location on the Metrologic website; [www.Metrologic.com](http://www.Metrologic.com) or local reseller's website you have purchased Metrologic product.

## **Contacting Metrologic**

You are recommended to prepare the following information before you call Metrologic or a local service provider:

- Product Serial Number and Model Name
- Application error messages
- Add-on options
- Operating System version number
- Information on a third party hardware or software
- Detailed questions.

If you have any requests for Metrologic technical support, contact your regional office detailed below.

## 9. Regional Offices

---

### EMEA HEADQUARTERS

Metrologic Instruments GmbH  
Dornierstrasse 2,  
82178 Puchheim, Germany  
Tel: +49 (0) 89 890 19 0  
Fax: +49 (0) 89 890 19 200  
Email: info@europe.metrologic.com  
www.europe.metrologic.com

---

### CORPORATE HEADQUARTERS

Metrologic Instruments, Inc.  
90 Coles Road  
Blackwood, NJ 08012-4683, USA  
Tel: 856-228-8100  
Fax: 856-228-6673 (Sales)  
Fax: 856-228-1879 (Marketing)  
Fax: 856-228-0653 (Legal/Finance)  
Email: info@metrologic.com  
www.metrologic.com

---

### Omniplanar

Omniplanar, Inc.  
1571 Imperial Way, Suite A  
West Deptford, NJ, USA  
Tel: 856-537-6100  
Fax: 856-537-6116  
www.metrologic.com

---

---

### EMEA TERRITORY OFFICES

#### Northern Europe

Metrologic Instruments UK Limited  
58 Tempus Business Centre,  
Kingsclere Road, Basingstoke,  
Hampshire RG21 6XG, UK  
Tel: +44 (0)1256 365900  
Fax: +44 (0)1256 365955  
Email: info@uk.metrologic.com  
www.metrologic.com

#### Central Europe

Metrologic Instruments GmbH  
Dornierstrasse 2,  
82178 Puchheim, Germany  
Tel: +49 (0) 89 89 019 0  
Fax: +49 (0) 89 89 019 200  
Email: info@de.metrologic.com  
www.metrologic.com

Metrologic Instruments Poland Spz o.o  
Poleczki 21, 02-822 Warsaw, Poland  
Tel: +48 (22) 545 04 30  
Fax: +48 (22) 545 04 31  
Email: info@pl.metrologic.com  
www.metrologic.com

#### Russian Federation

Metrologic Russia  
Bolshaya Novodmitrovskaya 14,  
RU-125015, Moscow, Russia  
Tel: +7 495 730 7424  
Fax: +7 495 730 7425  
Email: info@ru.metrologic.com  
www.metrologic.com

#### South East Europe and Middle East

Metrologic Instruments Italia Srl  
Via S. Quasimodo 46,  
40013 Castel Maggiore (BO), Italy  
Tel: +39 0 51 651 1978  
Fax: +39 0 51 652 1337  
Email: info@it.metrologic.com  
www.metrologic.com

#### Southern Europe

Metrologic Eria France SA  
69 Rue de la Belle Etoile,  
ZI Paris Nord II, BP 54057  
95947 - ROISSY CDG CEDEX, France  
Tel: +33 (0) 1 48 63 78 78  
Fax: +33 (0) 1 48 63 24 94  
Email: info@fr.metrologic.com  
www.metrologic.com

Metrologic Eria Ibérica SL  
Julián Camarillo 29, Edificio Diapasón,  
28037 Madrid, Spain  
Tel: +34 913 272 400  
Fax: +34 913 273 829  
Email: info@es.metrologic.com  
www.metrologic.com

#### Metrologic European Repair Centre (MERC)

Metrologic Eria Ibérica SL  
C/ Alfonso Gomez, 38-40, 1D  
28037 Madrid, Spain  
Tel: +34 913 751 249  
Fax: +34 913 270 437

---

---

### NORTH AMERICA

Metrologic The Americas  
1571 Imperial Way, Suite B  
West Deptford, NJ 08066, USA  
Tel: 1-856-537-6400  
Fax: 1-856-537-6474  
Email: info@us.metrologic.com  
www.metrologic.com

---

### SOUTH AMERICA AND CENTRAL AMERICA

#### Brazil

Metrologic do Brasil Ltda.  
Rua da Paz 2059, CEP 04713-002,  
Chácara Santo Antônio,  
São Paulo, SP, Brasil  
Tel: 55-11-5182-8226  
Fax: 55-11-5182-8315  
Email: info@br.metrologic.com  
www.metrologic.com

#### Outside Brazil

Metrologic South America  
Rua da Paz 2059, CEP 04713-002,  
Chácara Santo Antônio,  
São Paulo, SP, Brasil  
Tel: 55-11-5182-7273  
Fax: 55-11-5182-7198  
Email: info@sa.metrologic.com  
www.metrologic.com

---

---

### ASIA

#### Singapore

Metrologic Asia (Pte) Ltd  
50 Kallang Avenue, #01-02, Noel  
Corporate Building, Singapore 339505  
Tel : (65) 6842-7155  
Fax : (65) 6842-7166  
Email: info@sg.metrologic.com  
www.metrologic.com

#### China

MTLG Auto ID Instruments (Shanghai)  
Co., Ltd  
Room 1419, No.1 Ji long Road,  
Waigaoqiao Bonded Zone, Shanghai  
Tel: 86-21-58692780  
Fax: 86-21-58692782  
Email: info@cn.metrologic.com  
www.metrologic.com

#### China

Suzhou Sales Office  
BLK A, Room# 03/03-04,  
No.5 Xinghan Street,  
Xinsu Industrial Square,  
China-Singapore Suzhou Industrial Park,  
Suzhou, PRC  
Tel: 86-512-67622550  
Fax: 86-512-67622560  
Email: info@cn.metrologic.com  
www.metrologic.com

#### China

Guangzhou Sales Office  
Room 2307, Foreign Economic and Trade  
Building, #351 Tianhe Road,  
Guangzhou City, Guangdong Province,  
PRC  
Tel: 86-20-38823476  
Fax: 86-20-38823477  
Email: info@cn.metrologic.com  
www.metrologic.com

#### China

Beijing Sales Office  
Tower A, 5th Floor, Unit 5204,  
China Intr'l Science and Tech  
Convention Center, No. 12 Yu Min Road,  
Chao Yang District, Beijing,  
China 100029  
Tel/Fax: 86 10 82253472  
Email: info@cn.metrologic.com  
www.metrologic.com

#### India

Metrologic India  
403, 4th Floor Carlton Towers,  
No. 1, Airport Road, Bangalore,  
India 560 008  
Tel: +91 80 51256718  
Fax: +91 80 51256719  
Email: info@in.metrologic.com  
www.metrologic.com

#### Japan

Metrologic Japan Co., Ltd.  
Matsunoya Building, 6 Floor,  
3-14-8 Higashiueno, Taitou-ku,  
Tokyo 110-0015, Japan  
Tel: 81-3-3839-8511  
Fax: 81-3-3839-8519  
Email: info@jp.metrologic.com  
www.metrologic.com

---

**Information in this document is subject to change without notice**

Metrologic, Inc. reserves the rights to make improvements in the product described in this manual at any time and without notice.

This manual and the software described in this manual are copyrighted. All rights reserved. No part of this manual or the described software may be copied, reproduced, translated or reduced to any electronic medium or machine-readable form without the prior written consent of Metrologic, Inc.

## Free Manuals Download Website

<http://myh66.com>

<http://usermanuals.us>

<http://www.somanuals.com>

<http://www.4manuals.cc>

<http://www.manual-lib.com>

<http://www.404manual.com>

<http://www.luxmanual.com>

<http://aubethermostatmanual.com>

Golf course search by state

<http://golfingnear.com>

Email search by domain

<http://emailbydomain.com>

Auto manuals search

<http://auto.somanuals.com>

TV manuals search

<http://tv.somanuals.com>