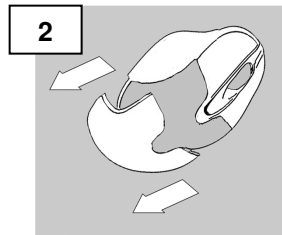
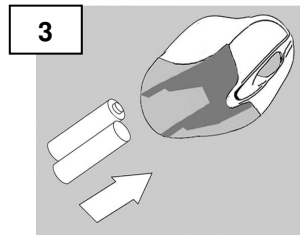


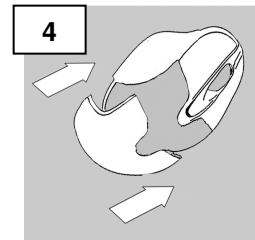
Firmly press and slide the top of the mouse to open the battery compartment



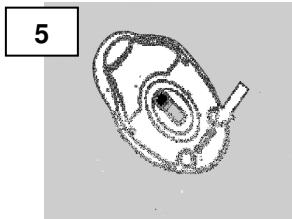
Slide the top cover backwards



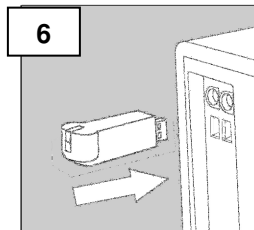
Correctly insert the batteries



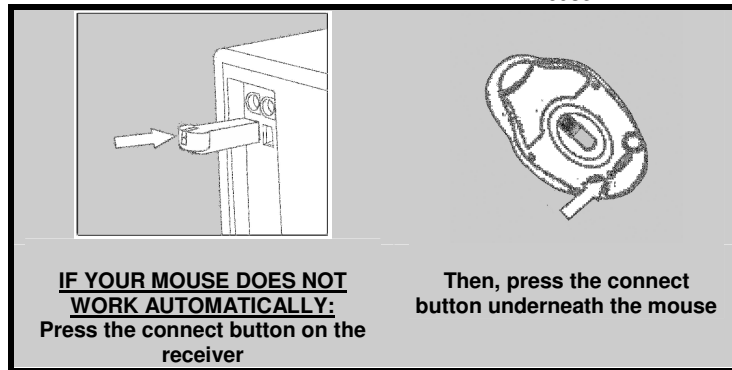
Slide the top cover back on the mouse



Make sure the mouse is turned "on"



Turn on your PC and connect the RF receiver to an available USB Port. Your mouse should now function properly.



For technical assistance visit [www.microinv.com](http://www.microinv.com) or call toll free: 1-877-550-5534.  
Technical Support hours of operation: Monday - Friday 8:30am to 7:00pm E.S.T.

## Free Manuals Download Website

<http://myh66.com>

<http://usermanuals.us>

<http://www.somanuals.com>

<http://www.4manuals.cc>

<http://www.manual-lib.com>

<http://www.404manual.com>

<http://www.luxmanual.com>

<http://aubethermostatmanual.com>

Golf course search by state

<http://golfingnear.com>

Email search by domain

<http://emailbydomain.com>

Auto manuals search

<http://auto.somanuals.com>

TV manuals search

<http://tv.somanuals.com>