

# Quick Installation Guide

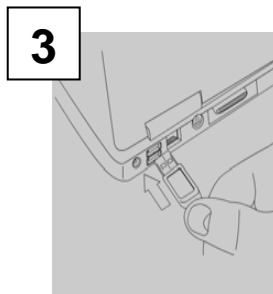
Model# USB455P



Turn on your computer



Connect the A to Mini B USB cable to the Mini USB B port located on the back of your USB Hub.



Connect the 5-Port Hi-Speed USB Hub to an available USB port on your computer



USB Power Port

USB Power Port provides power to USB devices and is **NOT** intended for data transfer. The USB Power Port Can be utilized to charge PDA's and cell phones.



The A/C power adapter is needed for additional power when stacking or connecting additional and/or USB 1.1 or 2.0 devices or peripherals

For technical assistance visit [www.microinv.com](http://www.microinv.com) or call toll free: 1-877-550-5534.  
Technical Support hours of operation: Monday - Friday 8:30am to 7:00pm E.S.T.

## Free Manuals Download Website

<http://myh66.com>

<http://usermanuals.us>

<http://www.somanuals.com>

<http://www.4manuals.cc>

<http://www.manual-lib.com>

<http://www.404manual.com>

<http://www.luxmanual.com>

<http://aubethermostatmanual.com>

Golf course search by state

<http://golfingnear.com>

Email search by domain

<http://emailbydomain.com>

Auto manuals search

<http://auto.somanuals.com>

TV manuals search

<http://tv.somanuals.com>