

DX-1 Disc Publisher Installation Quick Reference Guide

For a more in-depth look at the installation process, please refer to the Installation section of the User's Manual.

Hardware Installation:

1. Unpack the DX-1 Disc Publisher and place it in the selected workspace. This space should have enough vertical space to allow for easy loading of media into the input hopper and have enough room at the back to allow for any rejected discs to exit the DX-1 Disc Publisher without obstacles.
2. Plug the power cord into the back of the DX-1 Disc Publisher and turn on the switch above the cord. Next, press the power button on the front panel to turn on the printer.
3. Install the 3 Input Rods and attach the Output Bin using the thumbscrews. The wide Input Rod should be installed in the right-hand position, as marked.
4. Install the Microboards ink cartridges.



THE DX-1 DISC PUBLISHER WILL ONLY OPERATE WITH MICROBOARDS INK CARTRIDGE MODELS PRF19ML AND PRF38ML.

- A. Remove the tape from the front of the DX-1 Disc Publisher, lift the lid, and remove the tape from the print carriage when it is in the center of the printer.
 - B. Raise the cradle latches. Remove the ink cartridges from the packaging and carefully remove the plastic tape covering the print head.
 - C. Gently insert the ink cartridges into the appropriate cradles. Do not try to force the cartridges into place as doing so may damage the cartridge.
 - D. Secure the cradle latches and close the lid. The print carriage will return to the right neutral position.
5. Connect the DX-1 Disc Publisher to the computer using the USB cable provided. Please be sure the computer is off during this process.
 - A. Plug the small end of the USB cable into the back of the DX-1 Disc Publisher.
 - B. Plug the larger end of the USB cable into an available USB 2.0 port on the PC. Confirm that both ends of the cable are securely connected.
 6. Turn the PC on at this point.

The Hardware Installation is now complete. Proceed next to the installation of the DX-1 Disc Publisher Drivers and Software.

Driver Installation:

Windows 2000 and Windows XP will find the new hardware and will step you through the installation process.

1. Once the Hardware Installation is complete, verify that the printer is fully powered on and the connections to the computer are secure.

2. Turn on the computer to which the DX-1 Disc Publisher is connected. Once the computer boots, you will be notified that the new USB connection has been found.



3. Click the **Next** button.

4. Place the DX-1 Disc Publisher Software CD into the CD/DVD ROM drive.

5. **Windows 2000:** Select the option to Search for a suitable driver, and click **Next**. Check the CD-ROM Drives Box and click **Next**. Click the **Next** button again when you are notified that the driver has been found.

Windows XP: Select the option to Install from a list or specific location and click **Next**. Check the Search Removable Media box and click **Next**.

6. Once the USB drivers have been copied, click the **Finish** button.
7. A second USB driver installation will occur next. Repeat steps 3 through 6.
8. The Print driver installation will occur next. Repeat steps 3 through 6 to install the print drivers. If the Digital Signature screen appears, click the **Yes** or **Continue Anyway** button at the bottom of the screen. The drivers will then be copied to the hard drive.

NOTE: The USB and print driver installations may occur in a different order than that listed above. This will not affect the operation of the DX-1.

9. Verify the installation of the DX-1 Disc Publisher by clicking the **Start** button. Select **Printers and Faxes** from the Start menu, either through the Settings menu for Windows 2000 or directly in the Start menu for Windows XP. You will see the new printer installed and available for use.

DX-1 Disc Publisher controller and Software Installation:

The DX-1 Disc Publisher controllers, PrassiTech Zulu 2, and SureThing Disk Labeler are included on the Software disc.

DX-1 Disc Publisher Controller Installation:

1. Click the **Start** button and select Run from the Start menu. Click the **Browse** button and go to the CD/DVD drive, highlight **Publisher.exe**, click the **Open** button, then click **OK**.
2. Click the **Next** button on the next window. Once the window reads **Ready to Install the Program**, click the **Install** button. Click **Finish** once the installation completes. The Zulu2 software installation will begin automatically.

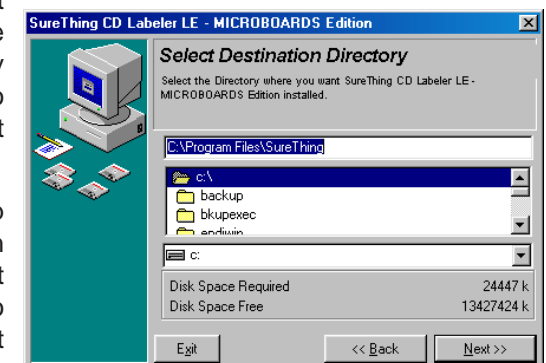
PrassiTech Zulu2 Installation:

1. Click the **Next** button to begin the Zulu2 installation process.
2. After the installation process completes, **remove the check** from the **Reboot Computer** box and click **Finish**. Rebooting will occur after installing SureThing.

SureThing CD Labeler Installation:

1. Click the **Start** button and select **Run** from the Start menu. Click the **Browse** button and go to the CD/DVD drive, highlight **SureThing.exe** and click the **Open** button, then click **OK**.
2. Read the Software License and Warranty information and click the **I Accept** button to continue the installation of SureThing.
3. Click the **Next** button at the Welcome screen.

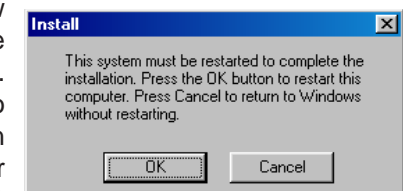
4. To install to the default directory, click **Next** on the Select Destination Directory screen. If you wish to install to a different location, select that location before clicking **Next**.



5. Select adding a desktop shortcut and the location in which the Start Menu shortcut will be created, or make no changes to select the default locations. Click **Next** when the locations are suitable.

6. Click **Start** on the next screen to install the application.
7. Click **Finish** once the installation is complete. You will also have the opportunity to register the software on-line.

8. The driver and software installation is now complete. The computer will need to be rebooted for the software to operate correctly. Click **OK** to reboot. If you choose not to reboot at this time, click the **Cancel** button to reboot later. Remember, the computer must be rebooted prior to running the DX-1 Disc Publisher, Zulu2, or SureThing.



Installation of the DX-1 Disc Publisher is complete. After rebooting, the printer will need to be aligned and the robotics configured prior to burning and printing disks. Please see the DX-1 Disc Publisher Configuration Quick Reference Guide on the other side of this page, or refer to the appropriate sections of the User's Manual.

DX-1 Disc Publisher Configuration Quick Reference Guide

DX-1 Disc Publisher Controller Configuration

NOTE: You must complete the hardware, driver, and software installation prior to configuring the DX-1 Disc Publisher and aligning the printer. Please see the other side of this Guide for the Installation Quick Reference Guide, or refer to the Installation section of the User's Manual.

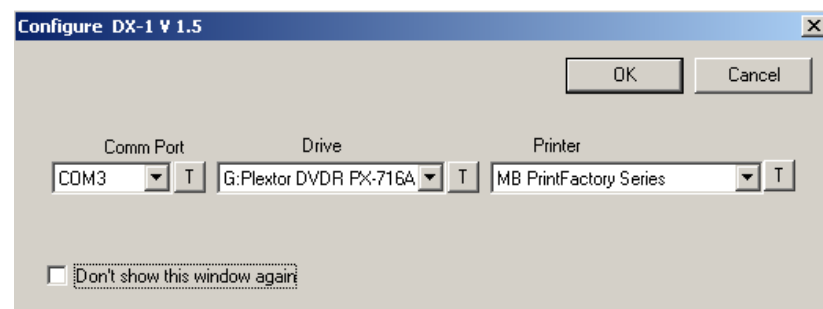


The DX-1 Disc Publisher controllers will need to be configured prior to use. When launching Zulu2 for the first time, the Configuration screen will appear.

Comm Port: Select the COM port from the drop-down list that is specified by the PC as the USB Serial Port in the Windows Device Manager (see User's Manual for more information). Verify the correct port selection by clicking the **T** button to the right of the port list. The flippers below the input hopper will lift and then drop if the correct port has been selected.

Drive: Select the drive letter from the drop-down list. Verify the correct drive selection by clicking the **T** button; the drive tray in the DX-1 Disc Publisher should eject and then retract.

Printer: Select MB PrintFactory Series from the drop-down list. Once selected, click the **T** button to verify that the selection; the belts will run if the correct printer has been selected.



Once the settings are set, place a **check** in the **Don't show this window again** box. This will bypass the controller configuration when Zulu2 is started. To show the configuration screen again when Zulu2 is started, select **Utilities** from the Zulu2 **Robotics** menu and place a **check** in the **Enable Configure Dialog** box.

Click the **OK** button to accept the selections and open Zulu2.

For more information on the configuration of the DX-1 Disc Publisher Controller, please refer to the Configuration section of the User's Manual.

Printer Alignment

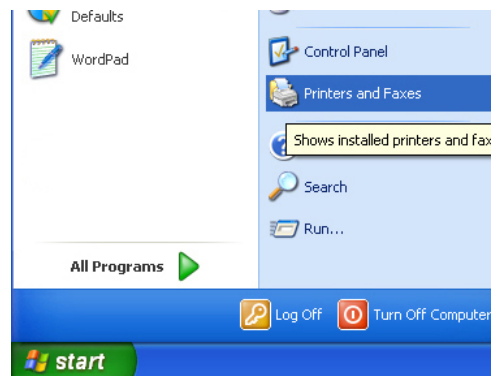
Your DX-1 Disc Publisher has been factory aligned to .1mm precision. The values provided with the DX-1 Disc Publisher, located on the back of the unit below the power plug, are the offset values to be used in the Printing Preferences.

To set these values, please follow the steps listed below:

1. Install the DX-1 Disc Publisher, print drivers, SureThing labeling software, and PrassiTech Zulu2 as detailed on the front of this Quick Reference Guide, or in the Installation section of the **User's Manual**.

2. Select **Printers and Faxes** from the **Start** button.

In Windows 2000 or Windows XP with the Classic Start Menu layout, you will need to go to the **Settings** selection, then to the **Printers and Faxes** from the **Start** button.



NOTE: IN BOTH WINDOWS 2000 AND WINDOWS XP, THE ALIGNMENT VALUES MUST BE ENTERED FROM THE START BUTTON FOR THE SETTINGS TO BE SET AS THE DEFAULT SETTINGS, NOT FROM WITHIN ANY APPLICATION!!!

3. Right click on the icon for the **Microboards Print Factory Series** and select **Printing Preferences...**

4. On the **Setup** tab, select **Photo** for the **Media Type** and **Best** for the **Print Quality**.

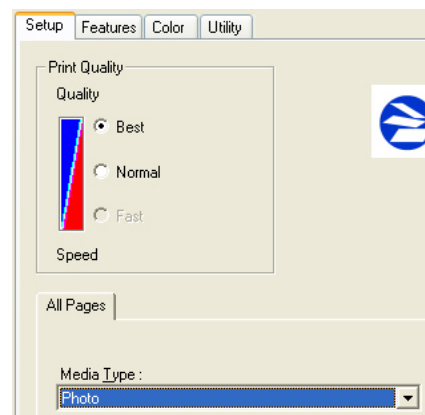
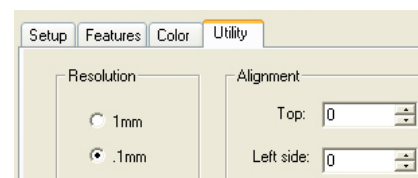


Photo Best should *always* be selected when aligning the printer, in order to insure the greatest accuracy during the alignment process. Other settings may not result in the best alignment.

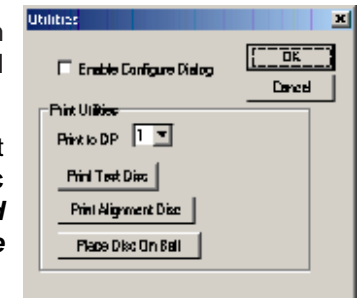
5. Select the **Utilities** tab. The **.1mm Resolution** setting must be selected before setting alignment values (see below). Set the **Top** and **Left Side** alignment values to match those provided with the DX-1 Disc Publisher.



These settings will change the size of the top and left margins, respectively. A negative value will move the alignment up or to the left, a positive value down or to the right.

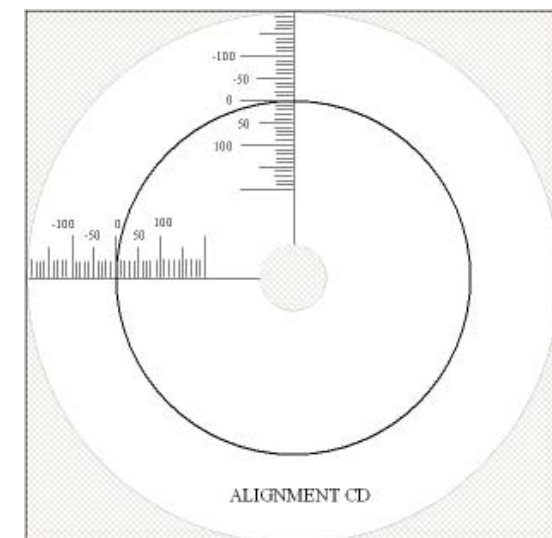
6. Click the **Apply** button, found on the bottom of the Printing Preferences window.

7. Start the Zulu2 application. Select **Utilities** from the **Robotics** menu. The window to the right will be displayed.



Place an alignment disc (provided) in the input hopper and click the **Print Alignment Disc** button. **Remember, the alignment CD should always be printed in Photo Best mode for the highest accuracy.**

8. Check the printed alignment disc. If the settings are correct, the horizontal and vertical crosshairs will have the 0 lines on the printed circle, as shown below. If not, **repeat steps 5 through 8**, changing the **Top** and **Left Side** amounts by those shown on the alignment CD.



For further details on the alignment process, please refer to the section on Alignment in the DX-1 Disc Publisher Users Manual.

In order to guarantee quality results from the DX-1 Disc Publisher,

ONLY MICROBOARDS PRF19ML OR PRF38ML COLOR INK CARTRIDGES CAN BE USED!

As is true with all printers, the quality of ink cartridge and the quality of the ink within the cartridge will affect your output. To ensure quality results, the DX-1 Disc Publisher will not operate with any other color ink cartridge in place.

Free Manuals Download Website

<http://myh66.com>

<http://usermanuals.us>

<http://www.somanuals.com>

<http://www.4manuals.cc>

<http://www.manual-lib.com>

<http://www.404manual.com>

<http://www.luxmanual.com>

<http://aubethermostatmanual.com>

Golf course search by state

<http://golfingnear.com>

Email search by domain

<http://emailbydomain.com>

Auto manuals search

<http://auto.somanuals.com>

TV manuals search

<http://tv.somanuals.com>