

GX Disc Printer Installation Quick Reference Guide

for Windows 2000 & XP



For a more in-depth look at the installation process, please refer to the Installation section of the User's Manual.

Be sure your computer meets the Minimum System Requirements as stated in the User's Manual and that you have read these instructions and the Manual prior to contacting Microboards Technical Support with installation or configuration questions!

GX Disc Printer Installation:

Do NOT connect your GX Disc Printer to your computer until you are told to do so!!

1. Unpack the GX Disc Printer and place it in the selected workspace. This space should have enough vertical space to allow for easy loading of media into the input hopper.
2. Insert the GX Disc Printer Installation disk into the CD/DVD ROM drive on your computer. The installer should open automatically.

If the installer does not automatically open, click the **Start** button and select Run from the Start menu. Click the **Browse** button and go to the CD/DVD drive, highlight **Setup.exe**, click the **Open** button, then click **OK**.

Please follow all directions on each window before clicking the Next button.



3. You will first be guided through the hardware setup. Do not click the Next button until you have completed each step.
4. After the physical hardware setup is complete, you will be instructed to connect the GX Disc Printer to the computer. Once this occurs, Windows will find your new hardware and run through the driver installation process. **There will be three components that need to be installed.**
5. **Windows 2000:** Select the option to Search for a suitable driver, and click **Next**. Check the CD-ROM Drives Box and click **Next**. Click the **Next** button again when you are notified that the driver has been found.

Windows XP: Do not allow the Search the Internet option to attempt to find the drivers for you. Select the option to Install from a list or specific location and click **Next**. Check the Search Removable Media box and click **Next**.



6. Once the drivers for this component have been installed, click the **Finish** button. Installation of SureThing DiscLabeller will occur next.

7. SureThing Disc Labeler Installation:

- A. Click the **Next** button at the Welcome screen.
- B. Select **I Accept** on the User License screen and click the **Next** button.
- C. To install to the default directory, click **Next** on the Select Destination Directory screen. If you wish to install to a different location, select that location before clicking **Next**.



- D. Click **Next** to add a shortcut in the Start Menu.
 - E. Select the option to add a desktop shortcut and/or a Quick Launch icon. Click **Next** when the locations are suitable.
 - F. Click **Install** on the next screen to install the application.
 - G. Click **Finish** once the installation is complete.
9. Back in the GX Disc Printer Installer, click the **Finish** button to complete the installation.

Installation of the GX Disc Printer is complete. The printer will need to be aligned prior to printing disks. Please see the other side of this guide or refer to the User's Manual for information on the alignment process.

Installation Troubleshooting Guide:

Hardware not installing on PC	<ol style="list-style-type: none"> 1. Turn on power to GX Disc Printer (back panel) 2. Reseat USB connection 3. Installation CD in drive?
Printer not responding	<ol style="list-style-type: none"> 1. Turn on power to Printer (front panel). Firmly press the power button and wait several seconds for the printer power LED to come on 2. Ink cartridge must be installed before turning on the GX Disc Printer. 3. If the LED on the power button is blinking Red with a cartridge installed, you may not have the ink cartridge installed correctly. Turn the GX off, remove the cartridge and reseat. Turn power back on.

In order to guarantee quality results from the GX Disc Printer,

**ONLY MICROBOARDS GX-300HC
COLOR INK CARTRIDGE CAN BE USED!**

As is true with all printers, the quality of ink cartridge and the quality of the ink within the cartridge will affect your output. To ensure quality results, the GX Disc Printer will not operate with any other color ink cartridge in place.

The use of refilled ink cartridges will void your warranty!

GX Disc Printer Configuration Quick Reference Guide

for Windows 2000 & XP



GX Disc Printer Alignment

Your GX Disc Printer has been factory aligned to .1mm precision. The values provided with the GX Disc Printer, located on the back of the unit above the power plug, are the offset values to be used in the Printing Preferences.

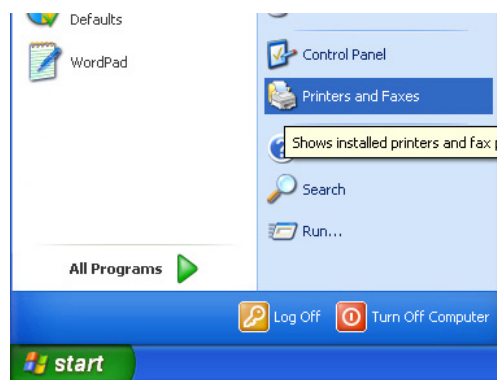
To set these values, please follow the steps listed below:

1. Install the GX Disc Printer, print drivers, SureThing labeling software, and PrassiTech Zulu2 as detailed on the front of this Quick Reference Guide, or in the Installation section of the **User's Manual**.

2. Select **Printers and Faxes** from the **Windows Start** button.

In Windows 2000 or Windows XP with the Classic Start Menu layout, you will need to go to the **Settings** selection, then to the **Printers and Faxes** from the **Start** button.

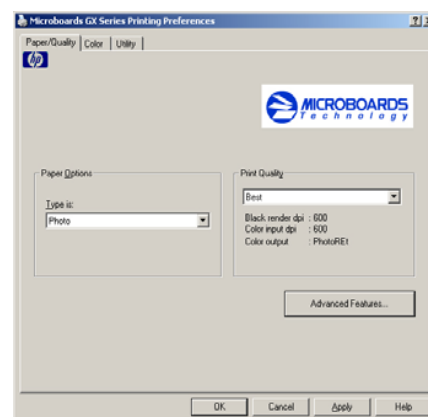
NOTE: IN BOTH WINDOWS 2000 AND WINDOWS XP, THE ALIGNMENT VALUES MUST BE ENTERED FROM THE START BUTTON FOR THE SETTINGS TO BE SET AS THE DEFAULT SETTINGS, NOT FROM WITHIN ANY APPLICATION!!!



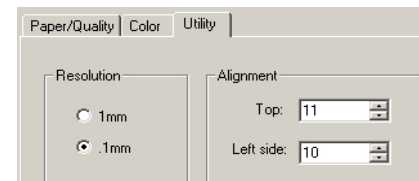
3. Right click on the icon for the **Microboards GX Series** and select **Printing Preferences...**

4. On the **Paper/Quality** tab, select **Photo** for the **Paper Type** and **Best** for the **Print Quality**.

Photo Best should *always* be selected when aligning the printer, in order to insure the greatest accuracy during the alignment process. Other settings may not result in the best alignment.



5. Select the **Utilities** tab. The **.1mm Resolution** setting must be selected before setting alignment values (see below). Set the **Top** and **Left Side** alignment values to match those provided with the GX Disc Printer.

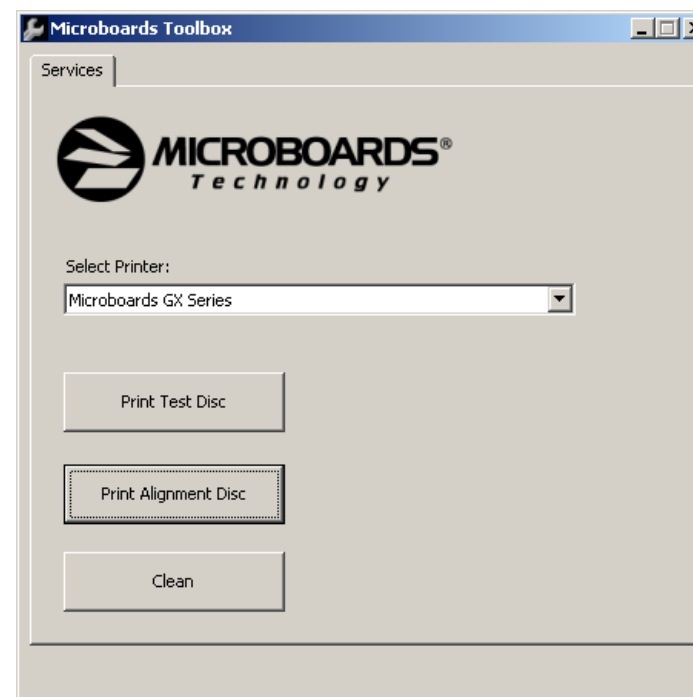


These settings will change the size of the top and left margins, respectively. Decreasing the values will move the image up or to the left, increasing will adjust down or to the right.

6. Click the **Apply** button to save the changes, found on the bottom of the Printing Preferences window.

7. Fine tuning may be required for different brands of media or different printing applications to provide full surface coverage. This can be done within the printing application to avoid altering these global alignment values set in the Printer Properties.

8. Open the Microboards GX Printer Toolbox. A shortcut labelled **Microboards GX Toolbox** was placed on your PC's desktop during the installation process for easy access to the application.



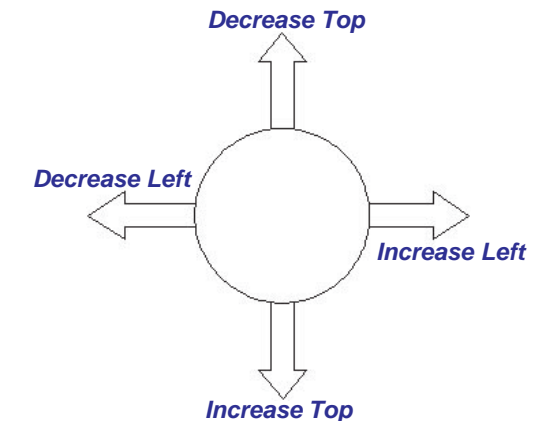
Place an alignment disc (provided) in the input hopper and click the **Print Alignment Disc** button. **Remember, the alignment CD should always be printed in Photo Best mode for the highest accuracy.**

9. Check the printed alignment disc. If the settings are correct, the horizontal and vertical crosshairs will intersect the printed circle at (0,0), as shown to the right. If not, **repeat steps 5 through 9**, changing the **Top** and **Left Side** amounts by those shown on the alignment CD.



Use the guide to the right to help decide how to adjust the settings to move the printed image to the correct position. Follow the instructions to move the image in the direction of each arrow.

For further details on the alignment process, please refer to the section on Alignment in the GX-2 Disc Publisher User's Manual.



GX Toolbox

Aside from the **Print Alignment Disc** function detailed in the previous section, the Toolbox allows you to print a Test Disc, Clean the ink cartridge. For both of these functions, you must have at least one disc loaded in the input hopper.

Clicking the **Test Disc** button prints out a pattern that was installed along with the print drivers without using an second application.

Clicking the **Clean Disc** button prints out a heavy ink-usage pattern to clear any clogged ink nozzles.

In order to guarantee quality results from the GX Disc Printer,

**ONLY MICROBOARDS GX-300HC
COLOR INK CARTRIDGE CAN BE USED!**

As is true with all printers, the quality of ink cartridge and the quality of the ink within the cartridge will affect your output. To ensure quality results, the GX Disc Printer will not operate with any other color ink cartridge in place.

The use of refilled ink cartridges will void your warranty!

Free Manuals Download Website

<http://myh66.com>

<http://usermanuals.us>

<http://www.somanuals.com>

<http://www.4manuals.cc>

<http://www.manual-lib.com>

<http://www.404manual.com>

<http://www.luxmanual.com>

<http://aubethermostatmanual.com>

Golf course search by state

<http://golfingnear.com>

Email search by domain

<http://emailbydomain.com>

Auto manuals search

<http://auto.somanuals.com>

TV manuals search

<http://tv.somanuals.com>