

# PF-3 Print Factory Installation Quick Reference Guide

for Windows Vista, XP, or 2000



**For a more in-depth look at the installation process, please refer to the Installation section of the User's Manual.**

**Be sure your computer meets the Minimum System Requirements as stated in the User's Manual and that you have read these instructions and the Manual prior to contacting Microboards Technical Support with installation or configuration questions!**

**Do NOT connect your PF-3 Print Factory to your computer until you are prompted to do so by the PF-3 Print Factory Installer**

## PF-3 Print Factory Installation:

1. Unpack the PF-3 Print Factory and place it in the selected workspace. This space should have enough vertical space to allow for easy loading of media into the input hopper and have enough room behind the PF-3 Print Factory to allow the unloading of rejected discs.
2. Insert the PF-3 Print Factory Installation disk into the CD/DVD ROM drive on your computer. The installer should open automatically.



If the installer does not automatically open, click the **Start** button and select Run from the Start menu. Click the **Browse** button and go to the CD/DVD drive, highlight **Setup.exe**, click the **Open** button, then click **OK**.

**Please follow all directions on each window before clicking the Next button.**

3. You will first be guided through the hardware setup. Do not click the **Next** button until you have completed each step.

4. After the physical hardware setup is complete, you will be instructed to connect the PF-3 Print Factory to the computer. Once this occurs, Windows will find your new hardware and run through the driver installation process.

5. **Windows Vista:** Drivers for Vista are pre-installed when the CX-1 Installer is run. By pre-installing the drivers, your PC will install the hardware without intervention once the USB connection is made.

**Windows XP:** Do not allow the Search the Internet option to attempt to find the drivers for you. Select the option to Install from a list or specific location and click **Next**. Check the Search Removable Media box and click **Next**.

**Windows 2000:** Select the option to Search for a suitable driver, and click **Next**. Check the CD-ROM Drives Box and click **Next**. Click the **Next** button again when you are notified that the driver has been found.



6. If the Microsoft Digital Signature screen appears, click the **Yes** or **Continue Anyway** button at the bottom of the screen.

7. Once the drivers for this component have been installed, you will be prompted to install the ink cartridges. Click the **Next** button when complete.

8. Click the **Finish** button when complete.

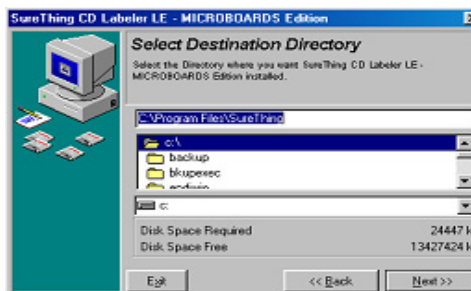
Installation of SureThing CD Labeler will occur next.

9. **SureThing CD Labeler Installation**

- A. Read the Software License and Warranty information and click the **I Accept** button to continue the installation of SureThing.

- B. Click the **Next** button at the Welcome screen.

- C. To install to the default directory, click **Next** on the Select Destination Directory screen. If you wish to install to a different location, select that location before clicking **Next**.



- D. Select the option to add a desktop shortcut and the location in which the Start Menu shortcut will be created, or make no changes to select the default locations. Click **Next** when the locations are suitable.

- E. Click **Start** on the next screen to install the application.

- F. Click **Finish** once the installation is complete. You will also have the opportunity to register the software on-line.

10. **The Microboards Printer Toolbox Installation**

The Microboards Toolbox is installed silently during the PF-3 installation. This application is used to monitor the PF-3 Print Factory and for general maintenance functions.



After the installation completes, the Toolbox will start up. You will see an icon appear in the tool tray in the lower right corner of your Windows desktop. To access the Toolbox, double-click the icon circled below.

The Toolbox will also automatically start up after rebooting the PC.

The Installation disc can be used to just re-install the Toolbox, if necessary. Place the CD in your PC's CD/DVD ROM drive and select the option to reinstall. You will have the option of reinstalling SureThing, the Toolbox, or both at once.

**For more information on configuration options, please see the PF-3 Print Factory Configuration Quick Reference Guide on the other side of this page, or refer to the appropriate sections of the User's Manual.**

## Installation Troubleshooting Guide:

Hardware not installing on PC	<ol style="list-style-type: none"> <li>1. Turn on power to PF-3 Print Factory (back panel)</li> <li>2. Reseat USB connection</li> <li>3. Installation CD in drive?</li> </ol>
Printer not responding	<ol style="list-style-type: none"> <li>1. Ink cartridge installed correctly?</li> <li>2. Turn on power to Printer (front and rear panels).</li> </ol>

In order to guarantee quality results from the PF-3 Print Factory,

**ONLY V102C and V101B  
INK CARTRIDGES CAN BE USED!**

As is true with all printers, the quality of ink cartridge and the quality of the ink within the cartridge will affect your output. To ensure quality results, the PF-3 Print Factory will not operate with any other ink cartridges in place.

**The use of refilled ink cartridges will void your warranty!**

## Print Image Diameter Settings

The Microboards PF-3 Print Factory includes the ability to mask the print image diameters to ensure that your media is not being printed outside of the printable surface. While SureThing Disc Labeling software creates circular templates 120mm in diameter, other applications may not limit the design to the correct size.

The default **Inner Diameter** setting is 360 (36mm). If you are using a print template with an inner hub of less than 36mm, you must change the Inner Diameter setting to match that of the template for the image to print correctly.

To change the Diameter settings, please follow these steps:

1. Access the Printing Preferences for the Microboards PF3. How this is done will depend on the Operating System and the currently selected Start Menu layout.

In Windows Vista, select the **Control Panel** from the **Start** button. Once the Control Panel opens, select **Printer** from the **Hardware and Sound** section.

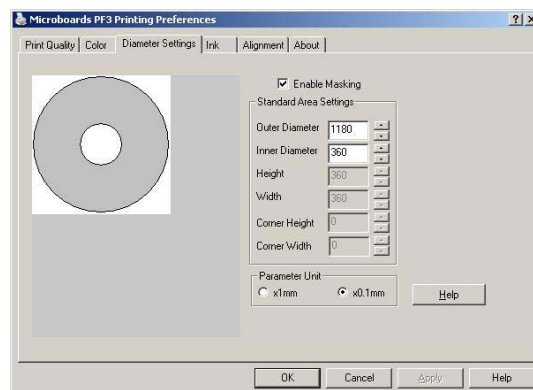
In Windows 2000 or Windows XP with the Classic Start Menu layout, you will need to go to the **Settings** selection, then to the **Printers and Faxes** from the **Start** button. Right-click the Microboards PF3 and select **Printing Preferences**.

In the Windows XP Start Menu layout, select **Printers and Faxes** from the **Windows Start** button.

2. Click the **Diameter Settings** tab.

3. Verify that the **Enable Masking** option is checked. The first Microboards PF3 Series printer will have this option checked by default; any subsequent printer installed will not have this option checked.

4. The **Outer Diameter** setting will define where the masking clips the outer edge of the print image. In the example shown below, the image will print to the default diameter of 118mm (the Parameter Unit is set to 0.1mm).



The **Inner Diameter** setting will define how far towards the center of the disc the image will print. This setting will need to be changed when printing to hub-printable media. The default of 36mm diameter of unprinted area is shown below.

5. Click the **Apply** button to save the changes.

## Print Image Alignment

Your PF-3 Print Factory has been factory aligned to .1mm precision. Fine tuning may be required depending on the media brand and printable surface type you are using to provide full surface coverage.

1. Access the Printing Preferences for the Microboards PF3. How this is done will depend on the Operating System and the currently selected Start Menu layout.

In Windows Vista, select the **Control Panel** from the **Start** button. Once the Control Panel opens, select **Printer** from the **Hardware and Sound** section.

In Windows 2000 or Windows XP with the Classic Start Menu layout, you will need to go to the **Settings** selection, then to the **Printers and Faxes** from the **Start** button.

In the Windows XP Start Menu layout, select **Printers and Faxes** from the **Windows Start** button.

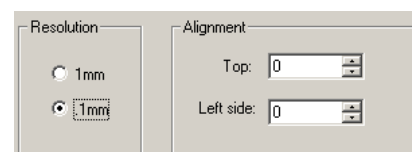
**NOTE: THE ALIGNMENT VALUES MUST BE ENTERED THROUGH THE PRINTERS AND FAXES WINDOW FOR THE SETTINGS TO BE SET AS THE DEFAULT SETTINGS, NOT FROM WITHIN ANY APPLICATION!!!**

2. Right click on the icon for the **Microboards PF3** and select **Printing Preferences...**

3. On the **Print Quality** tab, select **Photo** for the **Print Mode** and **Best** or **Max DPI** for the **Print Quality**.

**Photo Best** or **Max DPI** should *always* be selected when aligning the printer, in order to insure the greatest accuracy during the alignment process. Other settings may not result in the best alignment.

4. Select the **Alignment** tab. The **.1mm Resolution** setting must be selected before setting alignment values (see below). Set the **Top** and **Left Side** alignment values to those required for image alignment.



These settings will change the size of the top and left margins, respectively. Decreasing the values will move the image up or to the left, increasing will adjust down or to the right.

5. Click the **Apply** button to save the changes, found on the bottom of the Printing Preferences window.

6. Verify the alignment by printing a full disc image on the media. Repeat these steps if further alignment adjustments are required.

**For further details on the alignment process, please refer to the section on Alignment in the PF-3 Print Factory User's Manual.**

## Printer Toolbox

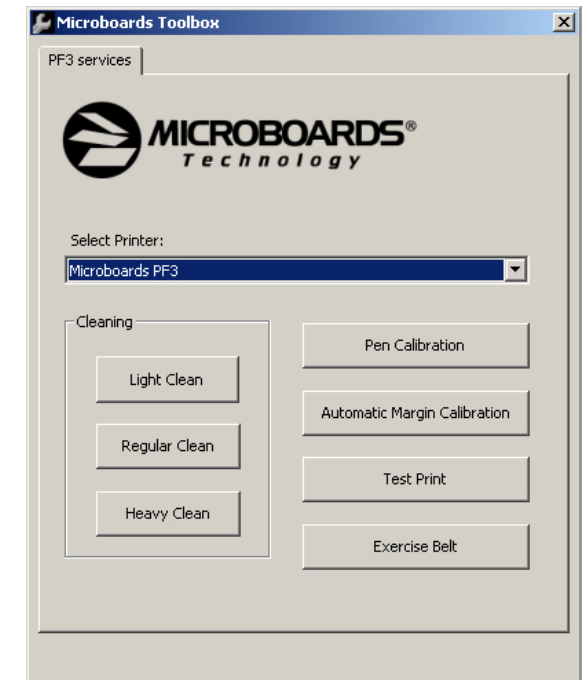
The **Printer Toolbox** contains several utility functions for the PF-3 Print Factory. The toolbox will open automatically after installation of the PF-3, and each time the PC boots up. It can also be run by double-clicking the **PF3 Toolbox** icon in the tool tray.



The functions of the Toolbox include:

- Printhead Cleaning Utilities
- Pen Calibration
- Automatic Margin Calibration
- Test Print
- Belt Exerciser
- Low Ink warnings

For more information on the Toolbox, please refer to the User's Manual.



**Be sure your computer meets the Minimum System Requirements as stated in the User's Manual and that you have read these instructions and the Manual prior to contacting Microboards Technical Support with installation or configuration questions!**

In order to guarantee quality results from the PF-3 Print Factory,

**ONLY V102C and V101B  
INK CARTRIDGES CAN BE USED!**

As is true with all printers, the quality of ink cartridge and the quality of the ink within the cartridge will affect your output. To ensure quality results, the PF-3 Print Factory will not operate with any other ink cartridges in place.

**The use of refilled ink cartridges will void your warranty!**

## Free Manuals Download Website

<http://myh66.com>

<http://usermanuals.us>

<http://www.somanuals.com>

<http://www.4manuals.cc>

<http://www.manual-lib.com>

<http://www.404manual.com>

<http://www.luxmanual.com>

<http://aubethermostatmanual.com>

Golf course search by state

<http://golfingnear.com>

Email search by domain

<http://emailbydomain.com>

Auto manuals search

<http://auto.somanuals.com>

TV manuals search

<http://tv.somanuals.com>