

**DURABRAND**

**MODEL HT-377**

## **2.1 CHANNEL HOME THEATER SYSTEM**



- **Compatible with MP3 & DVD Players, Computers and Game Consoles**
- **Dual Stereo Inputs for Easy Connections - Includes All Cables**
- **Active Subwoofer for Deep Bass**
- **Tower Speakers are Wall Mountable with Removable Pedestals (bases)**
- **Remote Control and Batteries Included**
- **Operates on 120V AC Power**

PLEASE READ CAREFULLY BEFORE USE

IB-HT377-WM-E-050405





## SAFETY INSTRUCTIONS

### WARNING

TO PREVENT FIRE OR SHOCK HAZARD, DO NOT USE THE PLUG WITH AN EXTENSION CORD, RECEPTACLE OR OTHER OUTLET UNLESS THE BLADES CAN BE FULLY INSERTED TO PREVENT BLADE EXPOSURE. TO PREVENT FIRE OR SHOCK HAZARD, DO NOT EXPOSE THIS APPLIANCE TO RAIN OR MOISTURE. TO PREVENT ELECTRICAL SHOCK, MATCH WIDE BLADE PLUG TO WIDE SLOT, FULLY INSERT.

 <p>The lightning flash with arrowhead symbol, within an equilateral triangle, is intended to alert the user to the presence of uninsulated "dangerous voltage" within the product's enclosure that may be of sufficient magnitude to constitute a risk of electric shock to persons.</p>	<p style="text-align: center;"><b>CAUTION</b></p> <p style="text-align: center;"><b>RISK OF ELECTRIC SHOCK DO NOT OPEN</b></p> <p>WARNING: TO REDUCE THE RISK OF ELECTRIC SHOCK, DO NOT REMOVE COVER (OR BACK). NO USER SERVICEABLE PARTS INSIDE. REFER SERVICING TO QUALIFIED SERVICE PERSONNEL.</p>	 <p>The exclamation point within an equilateral triangle is intended to alert the user to the presence of important operating and maintenance (servicing) instructions in the literature accompanying the appliance.</p>
--	---	--

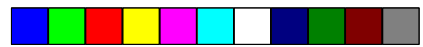
See bottom of the set

## IMPORTANT SAFETY INSTRUCTIONS

1. Read these instructions.
2. Keep these instructions.
3. Heed all warnings.
4. Follow all instructions.
5. Do not use this apparatus near water.
6. Clean only with dry cloth.
7. Do not block any ventilation openings, install in accordance with the manufacturer's instructions.
8. Do not install near any heat sources such as radiators, heat registers, stoves, or other apparatus (including amplifiers) that produce heat.
9. Do not defeat the safety purpose of the polarized or grounding-type plug. A polarized plug has two blades with one wider than the other. A grounding type plug has two blades and a third grounding prong. The wide blade or the third prong are provided for your safety. If the provided plug does not fit into your outlet, consult an electrician for replacement of the obsolete outlet.
10. Protect the power cord from being walked on or pinched particularly at plugs, convenience receptacles, and the point where they exit from the apparatus.
11. Only use attachments/accessories specified by the manufacturer.
12. Unplug this apparatus during lightning storms or when unused for long periods of time.
13. Refer all servicing to qualified service personnel. Servicing is required when the apparatus has been damaged in any way, such as power-supply cord or plug is damaged, liquid has been spilled or objects have fallen into the apparatus, the apparatus has been exposed to rain or moisture, does not operate normally or has been dropped.
14. Use only with the cart, stand, tripod, bracket, or table specified by the manufacturer, or sold with the apparatus. When a cart is used, use caution when moving the cart/apparatus combination to avoid injury from tip-over.



15. This appliance shall not be exposed to dripping or splashing water and that no object filled with liquid such as vases shall be placed on the apparatus.



## SAFETY INSTRUCTIONS

### FCC NOTE

This equipment has been tested and found to comply with the limits for a Class B digital device, pursuant to Part 15 of the FCC rules. These limits are designed to provide reasonable protection against harmful interference in a residential installation. This equipment generates, uses and can radiate radio frequency energy and, if not installed and used in accordance with the instructions, may cause harmful interference to radio communications. However, there is no guarantee that interference will not occur in a particular installation. If this equipment does cause harmful interference to radio or television reception, which can be determined by turning the equipment off and on, the user is encouraged to try to correct the interference by one or more of the following measures.

- Reorient or relocate the receiving antenna.
- Increase the separation between the equipment and receiver.
- Connect this equipment into an outlet on a circuit different from that to which the receiver is connected.
- Consult the dealer or an experienced radio/TV technician for help.

### CAUTION

FCC Regulations state that unauthorized changes or modifications to this equipment may void the user's authority to operate it.

### PRECAUTIONS ON SAFETY

Should any solid object or liquid fall into the Home Theater System, unplug the player, and have it checked by qualified personnel before operating it any further.

### ON PLACEMENT OF YOUR HOME THEATER SYSTEM

- Do not leave the Home Theater in a location near a heat source, or in a place subject to direct sunlight, excessively dusty rooms or rooms with very high humidity.
- Do not place the Home Theater system on an inclined or unstable place.
- Do not place anything within 1 inch of the sides or 2 inches from the back of the cabinet. The heat sink fins must not be covered for the set to operate properly and prolong the life of its components.

Please read important information displayed on the rating plate located on the bottom enclosure before connecting to AC Mains or any operation.



## INTRODUCTION

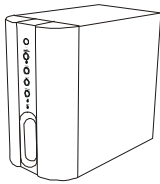
Thank you for purchasing this 2.1 channel Home System. This deluxe audio theater system turns your home into a virtual theater.

This system was designed to provide you with many years of reliable operation with a minimum of care and maintenance. Every component in your system was perfect when it left our factory. If you experience any problem with the set-up or operation of this system, please review the Trouble Shooting Guide at the end of this manual before you contact the Customer Service Department at 1-800-315-5885.

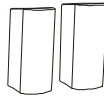
### **Basic Features & Benefits of this Home Theater System:**

1. Includes audio inputs for DVD, CD player, VCR, computer, MP3, GAME/CAMERA etc.
2. Customizable speaker level controls with indicators.
3. Powerful subwoofer provides real BOOM in your bass.
4. Deluxe easy-to-use remote control with batteries included.
5. LED indicators for DVD, MP3 functions.
6. Designed for easy, mistake-proof color-coded speaker setup.
7. Compatible with computer sound systems - audio cable is included.

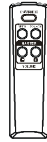
### **THIS SYSTEM CONTAINS**



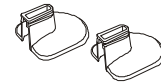
**1 Main Set (Subwoofer)**



**2 Speakers**



**1 Remote Control**



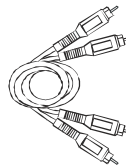
**2 Speaker's pedestals**



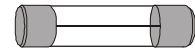
**2 "AAA" batteries**



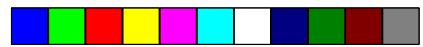
**1 Set of Audio cable with 3.5mm plug for Computer or MP3 Connection (or any other Source with 3.5mm Jack)**



**1 Set of Audio cable for DVD or AUX IN (Red & White)**



**1 Spare Fuse**



# TABLE OF CONTENTS

## • Getting Started

Safety Instructions-----	1,2
Introduction-----	3
Location of Controls-----	5,6
Remote Control Operation-----	6,7
Positioning Information -----	7

## • Connections

Speaker System Connections-----	8,9
TV Connections -----	10
TV + DVD Connections -----	11
TV + VCR Connections -----	12
TV + TV Game or Video Camera Connections -----	13
MP3/AUX Connections -----	14

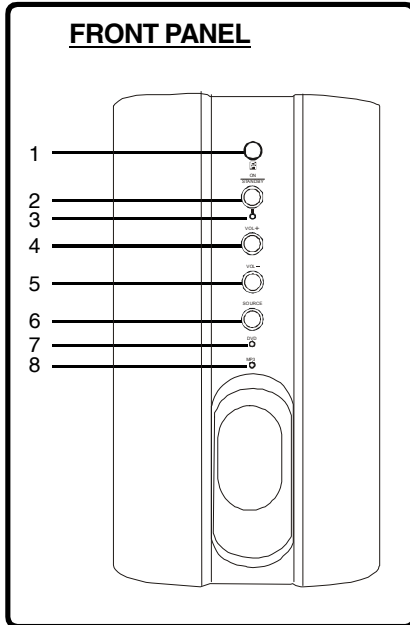
## • Amplifier in Main set-----15,16

## • Trouble Shooting -----16,17

## • Specifications -----18



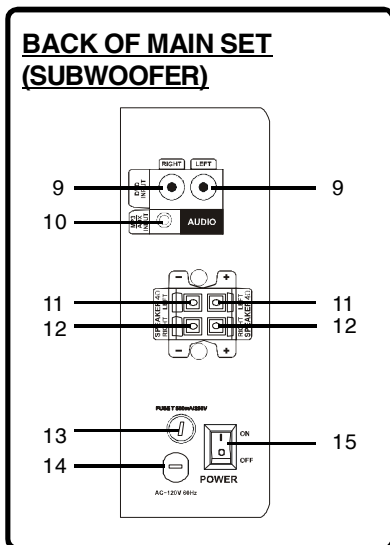
## LOCATION OF CONTROLS



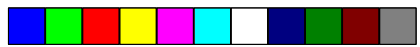
1. **REMOTE SENSOR** - Receives the signal from the REMOTE CONTROL (aim the REMOTE control towards this sensor).
2. **ON/STANDBY button** - Press to switch the set to on or standby mode.
3. **ON/STANDBY indicator** - This indicator has 2 modes: flashing and steadily on (slow flashing indicates the set is in standby, steadily on indicates the set is on). When the set is turned to ON, pressing the ON/STANDBY button on the main set or on the REMOTE CONTROL will turn the set to the standby mode, the indicator will become slow flashing.

**NOTE:** The power switch on the back of the main set must be ON.

4. **VOLUME + button** - Increases the volume.
5. **VOLUME - button** - Decreases the volume.
6. **SOURCE button** - Press to select the sound input source you want: DVD or MP3/AUX.
7. **DVD indicator** - For DVD sound use, press the SOURCE button on the main set or on the remote control till this lights.
8. **MP3 indicator** - For MP3, PC or other component's output sound use, press the SOURCE button on the main set or on the remote control till this lights.

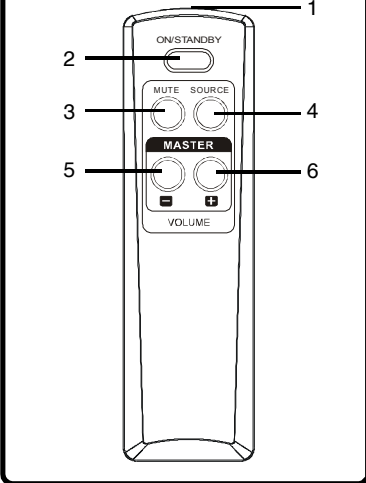


9. **DVD AUDIO INPUT jacks** - Connect to the audio output of a DVD player or other component with AUDIO output jacks to have 2.1 channel sound.
  10. **MP3/AUX INPUT jack** - Connect to the audio output of an MP3 or PC or tape deck or other component using a 3.5 mm audio output plug.
  11. **LEFT SPEAKER jacks** - Connect one of the SPEAKERS to the grey and black terminals.
  12. **RIGHT SPEAKER jacks** - Connect one of the SPEAKERS to the grey and black terminals.
  13. **FUSE HOLDER** with screw cover.
  14. **AC LINE CORD** - Connect to a 120V/60Hz AC standard wall outlet.
  15. **POWER switch** - Press to power the set on or off.
- NOTE:** This switch must be **ON** in order to be able to use the ON/STANDBY button on the main set or on the REMOTE CONTROL.



## LOCATION OF CONTROLS

### REMOTE CONTROL

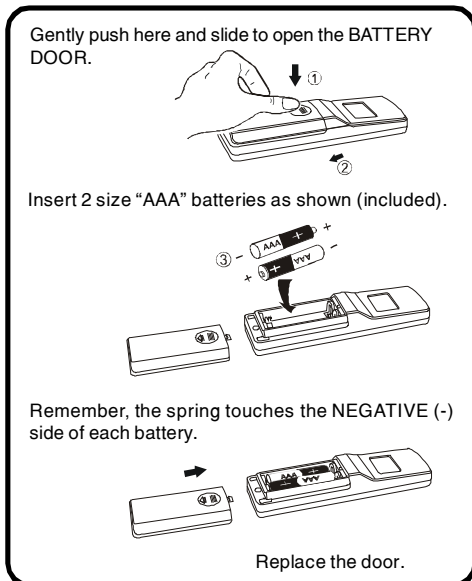


1. **IR DIODE** - Sends the signal to the set. Do not block or cover this.
2. **ON/STANDBY button** - Switches the player from STANDBY to ON or ON to STANDBY.
3. **MUTE button** - Instantly turns off the sound. Press again to restore the sound.
4. **SOURCE button** - Press to select the sound input source you want: DVD or MP3.
5. **VOLUME - button** - Press to decrease the volume.
6. **VOLUME + button** - Press to increase the volume.

## REMOTE CONTROL OPERATION

### Battery Installation

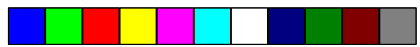
Remove the BATTERY COMPARTMENT DOOR of the REMOTE CONTROL and insert 2 size "AAA" alkaline batteries (included) according to the + and - markings inside the BATTERY COMPARTMENT of the REMOTE CONTROL unit, replace the door.



### Tips on Battery Use

- Reversing polarities will damage the batteries and possibly your REMOTE. Be sure to follow polarity ( + and - ) as indicated.
- Do not mix different types batteries together (Alkaline, Carbon-Zinc, Nickel-Cadmium etc.), or old batteries with new ones.
- When not in use for an extended period of time (over 60 days) remove the batteries to prevent possible acid leakage or corrosion resulting in damage to your remote.
- When the batteries have become discharged, they must be disposed of in a safe manner that complies with all applicable laws.
- Installation of batteries should only be done by an adult (for safety).

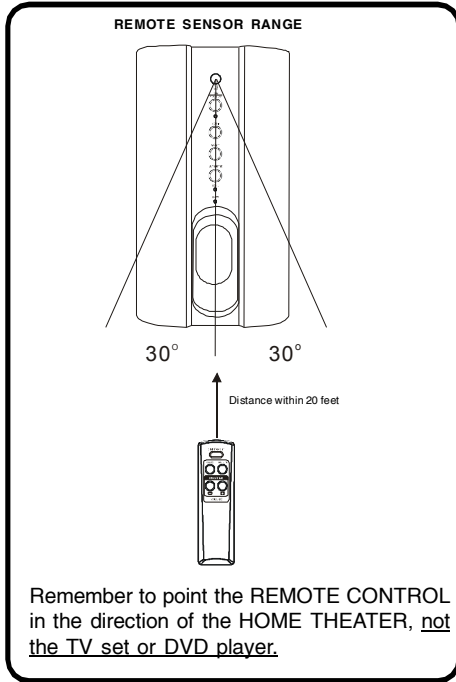
IB-HT377-WM-E-050405



## REMOTE CONTROL OPERATION

### Remote Control Operation Range

Point the REMOTE CONTROL unit from less than 20 feet from the remote control sensor and within about 60° of the front of the HOME THEATER SYSTEM (not your TV set or DVD player).



### Point the REMOTE CONTROL in the Right Direction

When you want the remote to operate the HOME THEATER SYSTEM, point the remote at the HOME THEATER, **not** the TV set or DVD player. The Remote has to be pointed in the correct direction and toward the correct component (HOME THEATER) in order for the remote control's signal to communicate with the remote sensor on the HOME THEATER. Make sure there is a clear path between the remote control and the HOME THEATER so the signal is not blocked.

### Tips on REMOTE CONTROL Operation

- The operating distance may vary according to the brightness of the room.
- Do not point bright lights at the remote control sensor (like laser pointers).
- Do not place objects between the remote control unit and the remote control sensor.
- Do not use this remote control while simultaneously using the remote control unit of any other equipment at the same time, the signals may mix.
- Sometimes your TV's remote may cause an LED to flash, you can ignore this.

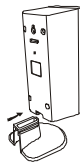
## POSITIONING INFORMATION

### Subwoofer Position

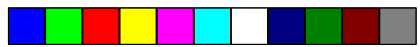
The subwoofer will provide the most dramatic bass effects (low frequency sounds like explosions and thunder) when it is placed on the floor. Do not place the subwoofer on a stand or table. The subwoofer should be placed in the front of the room so that it is facing towards your listening position. It can be placed on either side of the TV or even in the corner of the room, as far away as the cable will allow. The bass sounds from the subwoofer are non-directional. You will not really be able to tell where the bass is coming from.

### Speaker's pedestals Installation

In order to get better sound, We provide 2 pedestals for the speakers, please install them as the right illustration.







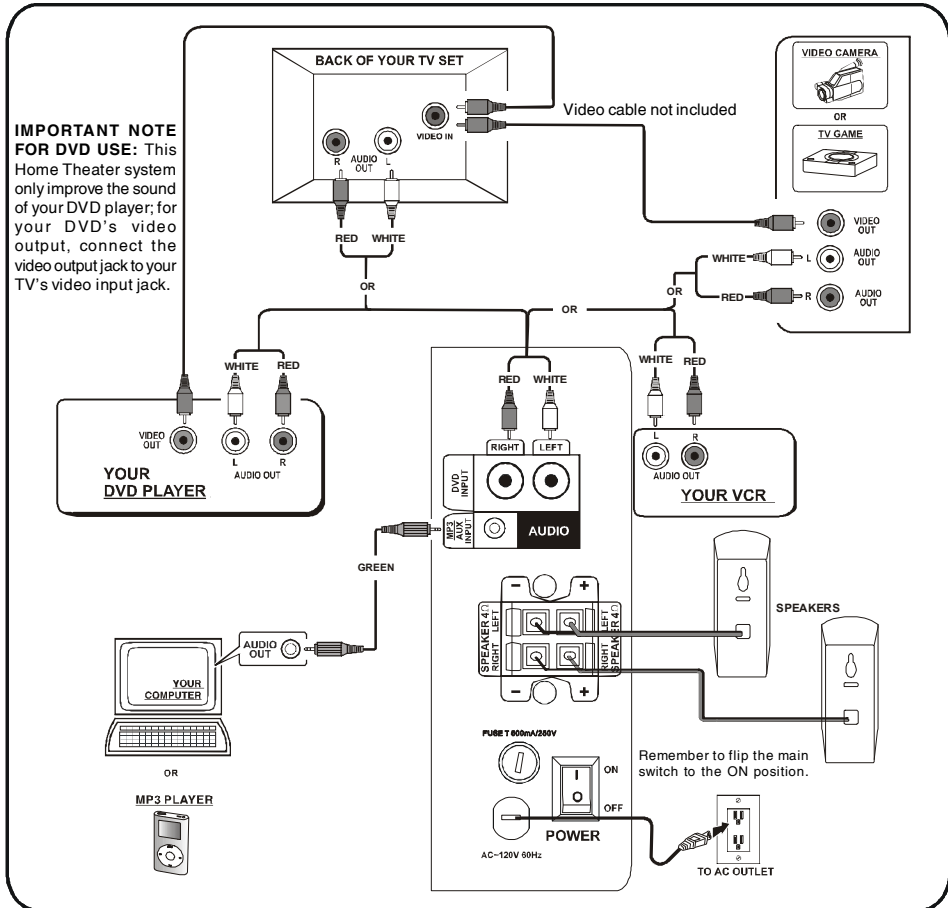
# SPEAKER SYSTEM CONNECTIONS

## Speaker System Connections

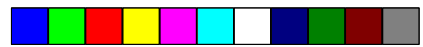
Connect the supplied speaker system by matching the colors of the terminals to those of the cords.

**IMPORTANT:** Before making connections, make sure the power is off.

## QUICK SETUP DIAGRAM



**NOTE:** In order to have TV sound come through your home theater system, your TV must have AUDIO OUTPUT jacks. These jacks will always be in the rear of the TV (and not in the front). If your TV does not have these output jacks, you have to use a cable box or a satellite receiver to get the audio.

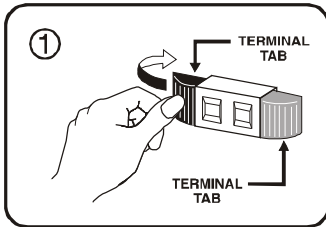


# SPEAKER SYSTEM CONNECTIONS

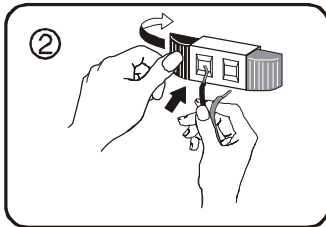
## Tips for connecting the speaker wires

Unwind and stretch out the speaker wires attached with each speakers, then push the set terminal tab on the back of the main set to insert each wire. Make sure the wire is fully inserted, but the insulation is not covering the inserted part of the speaker wires.

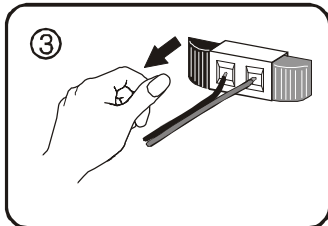
### SET TERMINAL



PUSH THE TAB OF TERMINAL.



STICK THE EXPOSED PART OF THE WIRE INTO THE HOLE OF THE TERMINAL.



PUSH THE TERMINAL TO LOCK THE WIRE INSIDE THE TERMINAL.

### MAKE SURE POWER IS OFF WHEN DONG THE ABOVE

#### NOTE:

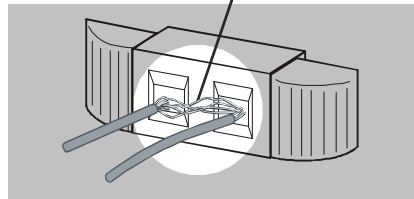
Be sure to match the speaker wire to the appropriate terminal on the back of the main set: grey to grey, and black to black. If the wires are reversed, the sound will be distorted and will lack some tones. Follow the color codes of each terminals.

## To avoid short-circuiting the speakers

- Make sure the stripped end of each speaker wire does not touch another set terminal or the stripped end of another speaker wire.

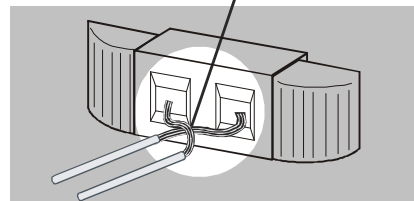
## Examples of poor connection of the speaker wires

LOOSE STRANDS TOUCHING  
(This will short out the sound)



- Stripped speaker wire is touching another set terminal. **Make sure not even 1 strand of wire touches the other wire!**

WIRES SHORTED TO EACH OTHER  
(This will short out the sound)



- Stripped wires are touching each other due to excessive removal of insulation. Do not allow the above to happen on your set.

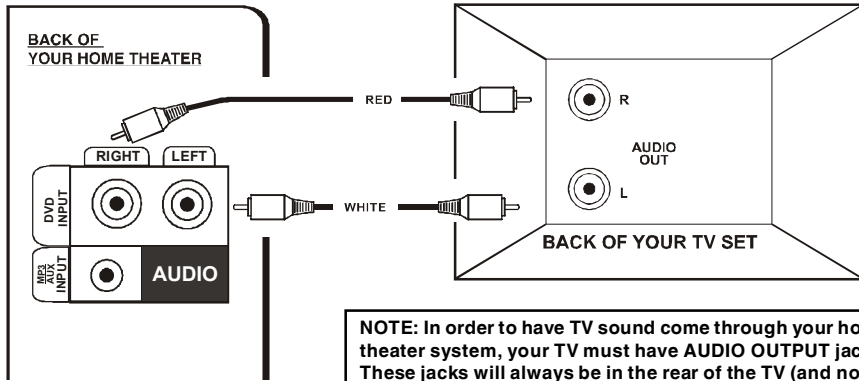
### MAKE SURE ABOVE DOES NOT HAPPEN

**NOTE:** If longer wires are needed, you may buy any good quality speaker wire and splice the wires yourself. Please make sure the wires are not shorting to each other and observe the correct color polarity. Many speaker wires have a dotted line or solid line or raised rib on one side to identify each side. Also make sure you use electrical tape to cover your splices.



## TV CONNECTIONS

### Home Theater System + TV (if your TV has Audio Output jacks)



**NOTE:** In order to have TV sound come through your home theater system, your TV must have AUDIO OUTPUT jacks. These jacks will always be in the rear of the TV (and not in the front). If your TV does not have these output jacks, you have to use a cable box or a satellite receiver to get the audio.

If you have a cable box or satellite receiver, you can connect the receiver AUDIO OUTPUT directly to your DVD INPUT jack on the back of the HOME THEATER SYSTEM.

CONNECT THE SPEAKERS AS SHOWN ON PAGE 8 (OR THE QUICK SETUP DIAGRAM SHEET).

1. Insert the stereo audio cables (included) into the DVD INPUT LEFT and RIGHT jacks on the back of your HOME THEATER SYSTEM, and into the corresponding AUDIO output jacks on your TV, this will allow your TV's sound to play through your HOME THEATER SYSTEM. You will hear sound from both the TV and your HOME THEATER, this is normal.

**NOTE:** On some TVs, you may have to activate the audio out jacks of your TV. See your TV's booklet.

2. Insert the AC power cord into an AC outlet.
3. Make sure the POWER switch on the back of the main set is at "ON" position. Next press the ON/STANDBY button on the front of the main set or on the REMOTE CONTROL to switch the set on (or standby).
4. Press the SOURCE button till the DVD indicator lights.

**NOTE:** The factory's default input source is DVD. When the set is turned to ON, the DVD indicator will be on, press the SOURCE button to turn on the MP3 indicator if you use the 3.5 mm plug audio cable.

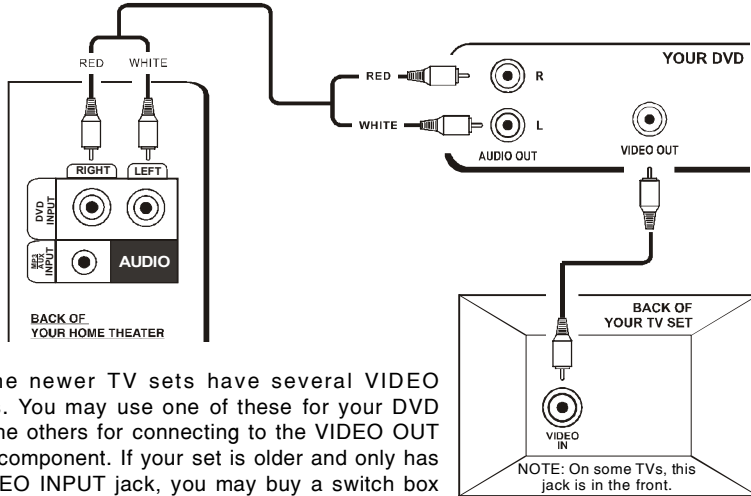
5. Go to Page 15 for other detailed instructions.

**NOTE:** Your cable or antenna connection to your TV is not touched with this connection. Leave your antenna cable to your TV as you normally would. No changes will be made to your current antenna connections.



# TV + DVD CONNECTIONS

## Home Theater System + TV + DVD Player



**NOTE:** Some newer TV sets have several VIDEO INPUT jacks. You may use one of these for your DVD player and the others for connecting to the VIDEO OUT jacks of the component. If your set is older and only has a single VIDEO INPUT jack, you may buy a switch box to change the video of DVD and Game.

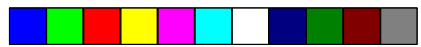
CONNECT THE SPEAKERS AS SHOWN ON PAGE 8 (OR THE QUICK SETUP DIAGRAM SHEET).

1. Insert the stereo audio cables (included) into the DVD INPUT LEFT and RIGHT jacks on the back of your HOME THEATER SYSTEM, and into the corresponding AUDIO output jacks on your DVD player, this will allow your DVD's sound to play through your HOME THEATER SYSTEM.
2. Insert the video cable into the VIDEO OUT jack on the back of your DVD player and into the VIDEO IN jack on the back of your TV set. This is especially convenient if your TV has several inputs.
3. Insert the AC power cord into an AC outlet.
4. Make sure the POWER switch on the back of the main set is at "ON" position. Next press the ON/STANDBY button on the front of the main set or on the REMOTE CONTROL to switch the set on (or standby).
5. Press the SOURCE button till the DVD indicator lights.

**NOTE:** The factory's default input source is DVD. When the set is turned to ON, the DVD indicator will be on, press the SOURCE button to turn on the MP3 indicator if you use the 3.5 mm plug audio cable.

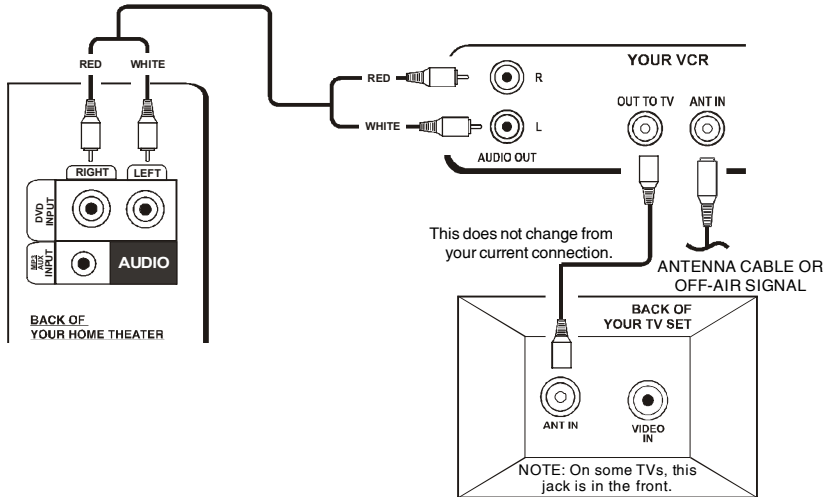
6. Go to Page 15 for other detailed instructions.

**NOTE:** Your cable or antenna connection to your TV is not touched with this connection. Leave your antenna cable to your TV as you normally would. No changes will be made to your current antenna connections.



## TV + VCR CONNECTIONS

### Home Theater System + TV + VCR

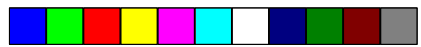


CONNECT THE SPEAKERS AS SHOWN ON PAGE 8 (OR THE QUICK SETUP DIAGRAM SHEET).

1. Insert the stereo audio cables (included) into the DVD INPUT LEFT and RIGHT jacks on the back of your HOME THEATER SYSTEM, and into the corresponding AUDIO output jacks on your VCR, this will allow your VCR's sound to play through your HOME THEATER SYSTEM.
2. Connections of your other antenna cables are not changed when you add your HOME THEATER SYSTEM. You will hear sound from both the TV and your HOME THEATER, this is normal.
3. Insert the AC power cord into an AC outlet.
4. Make sure the POWER switch on the back of the main set is at "ON" position. Next press the ON/STANDBY button on the front of the main set or on the REMOTE CONTROL to switch the set on (or standby).
5. Press the SOURCE button till the DVD indicator lights.

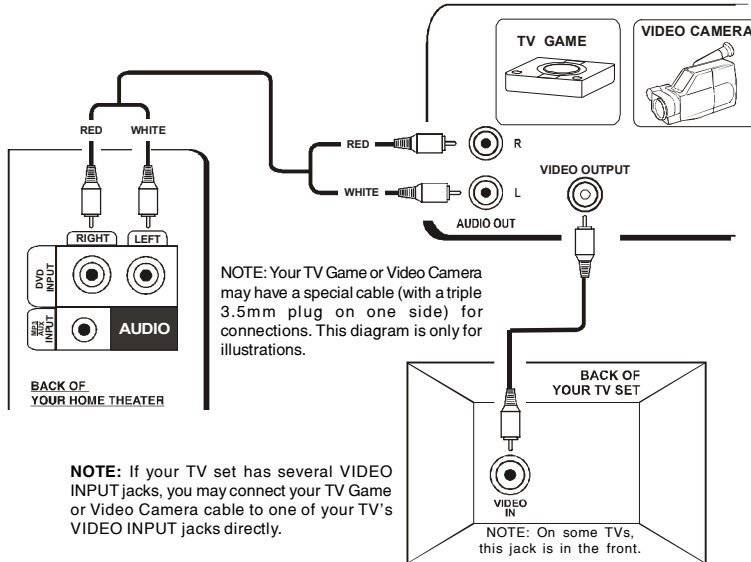
**NOTE:** The factory's default input source is DVD. When the set is turned ON, the DVD indicator will be on, press the SOURCE button to turn on the MP3 indicator if you use the 3.5 mm plug audio cable.

6. Go to Page 15 for other detailed instructions.



## TV + TV GAME OR VIDEO CAMERA CONNECTIONS

### Home Theater System + TV + TV Game or Video Camera

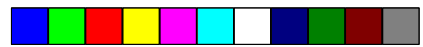


CONNECT THE SPEAKERS AS SHOWN ON PAGE 8 (OR THE QUICK SETUP DIAGRAM SHEET).

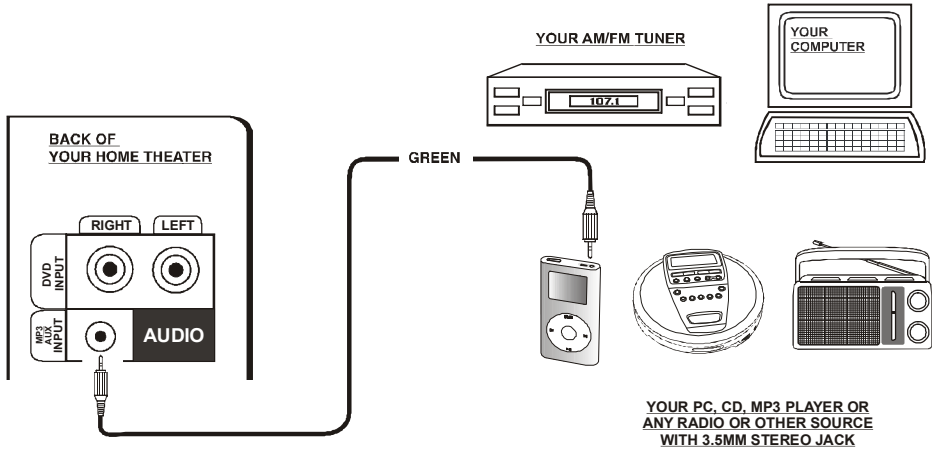
1. Insert the stereo audio cables (included) into the DVD INPUT LEFT and RIGHT jacks on the back of your HOME THEATER SYSTEM, and into the corresponding AUDIO output jacks on your TV Game or Video Camera, this will allow your TV Game or Video Camera's sound to play through your HOME THEATER SYSTEM.
2. Insert the video cable into the VIDEO OUT jack of your TV Game or Video Camera player and into the VIDEO IN jack on the back of your TV set. This is especially convenient if your TV has several inputs.
3. Insert the AC power cord into an AC outlet.
4. Make sure the POWER switch on the back of the main set is at "ON" position. Next press the ON/STANDBY button on the front of the main set or on the REMOTE CONTROL to switch the set on (or standby).
5. Press the SOURCE button till the DVD indicator lights.

**NOTE:** The factory's default input source is DVD. When the set is turned to ON, the DVD indicator will be on, press the SOURCE button to turn on the MP3 indicator if you use the 3.5 mm plug audio cable.

6. Go to Page 15 for other detailed instructions.



## MP3/AUX CONNECTIONS



CONNECT THE SPEAKERS AS SHOWN ON PAGE 8 (OR THE QUICK SETUP DIAGRAM SHEET).

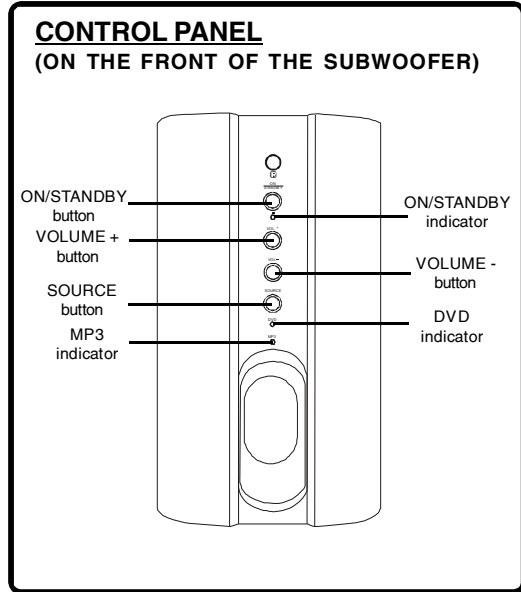
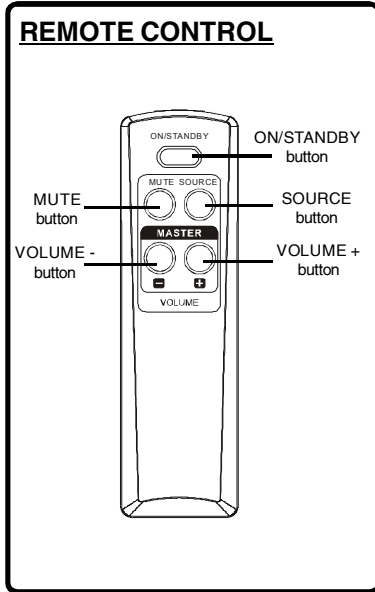
1. Insert the green 3.5 mm audio cable (included) into the MP3/AUX INPUT jack on the back of your HOME THEATER SYSTEM, and into the corresponding AUDIO output jack on your MP3, PC, CD player, or other device, this will enable you to hear your components system through your HOME THEATER SYSTEM.
2. Insert the AC power cord into an AC outlet.
3. Make sure the POWER switch on the back of the main set is at "ON" position. Next press the ON/STANDBY button on the front of the main set or on the REMOTE CONTROL to switch the set on (or standby).
4. Press the SOURCE button till the MP3 indicator lights.

**NOTE:** The factory's default input source is DVD. When the set is turned to ON, the DVD indicator will be on, press the SOURCE button to turn on the MP3 indicator.

5. Go to Page 15 for other detailed instructions.



## AMPLIFIER IN MAIN SET



### General

- 1 Make sure the POWER switch on the back of the main set is at "ON" position. Next press the ON/STANDBY button on the front of the main set or on the REMOTE CONTROL to turn the set on (or standby).

**NOTE:** The STANDBY indicator has 2 modes: flashing and steadily on (slow flashing indicates the set is in standby mode, steadily on indicates the set is on). When the set is on, pressing the ON/STANDBY button on the main set or on the REMOTE CONTROL will turn the set to the standby mode, the indicator will become slow flashing.

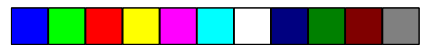
- 2 Press the **SOURCE** button on the front panel of the main set or on the REMOTE CONTROL to select one of the audio input sources, the corresponding indicator will light, the factory's default input source is DVD, when the set is turned on, the DVD indicator will be on.
- 3 For volume adjustments, press the volume control buttons on the Remote control, the ON/STANDBY indicator will flash to show you that the remote signal is received.

**NOTE:** Every time you turn the set on, the VOLUME will go back to the factory's default setting; and whenever you press the SOURCE button on the main unit or on the REMOTE, the VOLUME will go back to the factory's default setting. This avoids sudden very loud sounds from startling you.

- 4 To momentarily shut off the sound, press the **MUTE** button. The source indicator (DVD or MP3) will flash. Press the MUTE button again or press the VOLUME buttons to restore the sound.

**NOTE:** Flip the POWER switch on the back of the main set to "OFF" if the set will not be used for a long period of time (several days or more).



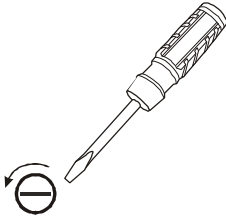


## AMPLIFIER IN MAIN SET

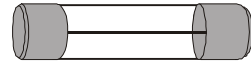
### About fuse replacement

**NOTE:** Before attempting to change the fuse, the system must be unplugged from the wall outlet.

In the unusual event that nothing lights up and no sound, your fuse may have blown. To check for a blown fuse, follow the steps below.

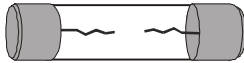


1. Open the fuse cover (on the back of the main set) by using a flat blade screwdriver to unscrew the fuse cover cap.



**GOOD FUSE**

2. Examine the fuse. If a wire shows, the fuse is good.



**BLOWN FUSE**

3. If the wire is broken in the middle, replace with a 500 mA 250V "T" type glass fuse.  
"T" means time delay or slow blow fuse.

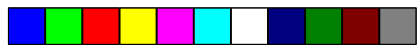
## TROUBLE SHOOTING

Symptom	Remedy
No power	<ol style="list-style-type: none"> <li>1. Is the power cord firmly plugged into the power outlet? Insert the AC power plug securely into the power outlet. Make sure your outlet has power, you can check this by plugging a lamp into the outlet to see if it works.</li> <li>2. Is the main power switched to off? Flip it to ON.</li> <li>3. One of the safety mechanisms may be operating. In this event, unplug the player from the power outlet briefly and then plug it in again to reset the set.</li> </ol>
No power	<p>Your set's fuse may have blown. Unscrew the fuse cover &amp; check the fuse. Replace only with same 500 mA slow blow 250V "T" type glass fuse.</p>
Your DVD player has no picture	<p>Make sure your DVD's video cable is plugged into your TV set. This Home Theater only improves the sound of your DVD player, it does not affect the video at all. Also select the correct VIDEO INPUT on your TV.</p>



## TROUBLE SHOOTING

Symptom	Remedy
<ul style="list-style-type: none"> <li>No sound or only a very low-level sound is heard.</li> <li>Distorted sound.</li> </ul>	<ol style="list-style-type: none"> <li>1. Check that the speakers and components are connected securely and correctly, make sure the stripped end of each speaker wires does not touch each other to avoid short-circuit of the speaker wires (see Page 8, 9).</li> <li>2. Make sure your source (DVD or other) is plugged in and operating. Also check that component's booklet, maybe you need adjust that component.</li> <li>3. Check and make sure your DVD's sound output is set to analog. For some DVDs, if the sound output is not set to analog, the audio cables may not be active and there will be no sound output.</li> <li>4. Make sure that you have selected the correct source on the system (DVD or MP3).</li> <li>5. Adjust the set's volume settings on the front of the HOME THEATER or on the remote, also adjust the volume of the input source.</li> <li>6. Ensure the MUTE button is <u>not</u> pressed on the HOME THEATER remote (If yes, press the MUTE button again).</li> <li>7. The audio or speaker connecting wires are damaged. Replace them with new ones.</li> </ol>
The REMOTE CONTROL unit does not work.	<ol style="list-style-type: none"> <li>1. Check if the batteries are installed with the correct polarities ( + and - ).</li> <li>2. If the batteries are weak or dead, replace them with new ones (size "AAA").</li> <li>3. Point the remote control unit at a distance of less than 20 feet from the main unit of the HOME THEATER system.</li> <li>4. Remove any obstacles between the remote control unit and remote control sensor.</li> <li>5. If the battery terminals are dirty or corroded, clean them with sandpaper.</li> </ol>
No buttons operate (on the main set and / or the REMOTE CONTROL unit).	Press the POWER button on the back of the MAIN SET to turn the set ON. Then press the ON/STANDBY button on the main set or on the REMOTE. The HOME THEATER may not be operating properly due to lightning, static electricity, or some other external factors. Reset the player by disconnecting the power plug and then re-connecting it before calling customer service. Also check the Fuse. See page 16.
The left and right sounds are unbalanced or reversed.	Check that the speakers and components are connected correctly and securely.
Loud hum or noise is heard.	<ol style="list-style-type: none"> <li>1. Check that the speakers and components are connected securely.</li> <li>2. Insert all wires firmly, follow the setup pages starting on Page 8. Loud hum usually means a plug is not fully seated into the jack.</li> </ol>
The system does not operate properly.	Double check if input & output jacks were inserted properly. Also ask a friend to help you before calling customer service.



# SPECIFICATIONS

## **General**

Power requirements ----- AC 120V, 60Hz  
 Power consumption ----- 55 Watts  
 Main set Dimensions ----- 5<sup>5</sup>/<sub>8</sub> X 10<sup>1</sup>/<sub>4</sub> X 9<sup>7</sup>/<sub>8</sub> inches / 143 X 260 X 251 mm  
     Weight ----- 2.86 kg  
 Speaker Dimensions ----- 3<sup>1</sup>/<sub>8</sub> X 3<sup>3</sup>/<sub>8</sub> X 8<sup>5</sup>/<sub>8</sub> inches / 79 X 86 X 219 mm  
     Weight ----- 0.29 kg

## **Audio Power Output**

Total output power: 50 Watts at Maximum

## **Distortion**

0.06% @ reference output

## **Remote Operating Range**

Within 20 feet between the main set and the remote.

## **Replacement Fuse**

Time delay 500 mA T type (slow blow) glass fuse 250V.

LENOXX reserves the right to make design and specification changes for product improvement.

## **PROTECT YOUR FINE FURNITURE!**

WE RECOMMEND A CLOTH OR OTHER PROTECTIVE MATERIAL BE PLACED UNDER THE SET OR SPEAKERS WHEN PLACING IT ON A SURFACE WITH A NATURAL OR LACQUER FINISH.

**For customer service of this Durabrand product Dial: 1-800-315-5885**

(MONDAY-THURSDAY 8:00 AM - 5:00 PM, FRIDAY 8:00 AM - 1:00 PM EST)

© 2005 LENOXX ELECTRONICS CORP.  
 2 GERMAK DRIVE  
 CARTERET, N.J. 07008  
<http://www.lenox.com>  
 MADE & PRINTED IN CHINA

## Free Manuals Download Website

<http://myh66.com>

<http://usermanuals.us>

<http://www.somanuals.com>

<http://www.4manuals.cc>

<http://www.manual-lib.com>

<http://www.404manual.com>

<http://www.luxmanual.com>

<http://aubethermostatmanual.com>

Golf course search by state

<http://golfingnear.com>

Email search by domain

<http://emailbydomain.com>

Auto manuals search

<http://auto.somanuals.com>

TV manuals search

<http://tv.somanuals.com>