

DURABRAND

Model: MP-400

MP3 / WMA Player

Operating Instructions



- MP3 and WMA compatible
- Card slot for up to 512M SD/MMC memory card for extra storage
- Deluxe stereo earphones with neck strap
- Preset 6 position selectable equalizer
- 512M built-in total storage space
- Lock button prevents accidental usage
- Includes USB cable and software disc
- Operates with one AAA alkaline battery
- Can also be used to record and transfer files as a portable media device
- Track, Song time, Battery, Volume and Play mode indicators
- Requires Windows 98SE/Me/2000/XP/ Mac OS X 10.2.6 or above
- 2 Demo songs are included

Note: WMA Music with DRM Protection can not be supported by this audio player.

IB-MP400-WC-E-061005

TABLE OF CONTENTS

1 - Start to use	
1-1 Preface.....	2
1-2 Features.....	3
1-3 Device Overview.....	4
1-4 LCD Display Overview.....	6
1-5 Battery Installation.....	7
2 - Software Installation (for Windows 98SE)	
2-1 Basic System Requirements.....	7
2-2 Installing Software Driver and Utilities.....	7
2-3 Connecting the Audio Player and Computer.....	9
2-4 Using the Audio Player as a Removable Drive (USB Disk).....	10
2-5 Disconnecting the Audio Player from Your Computer.....	11
3 - Basic Operation of the Audio Player	
3-1 Hanging the Earphones and Neck Strap Connection.....	12
3-2 Player Power On/Off.....	13
3-3 Music Playback.....	13
3-4 Adjusting the Volume.....	14
3-5 Locking the buttons.....	14
3-6 Adjusting Equalizer and Play Modes.....	15
3-7 Using an External SD / MMC Memory Card.....	16
3-8 Deleting Files or Music from Your Player.....	16
3-9 Transferring Files and Music from Your Computer to the MP-400.....	17
3-10 Storage Information of the Player.....	18
4 - Using Microsoft's Windows Media Player	
4-1 Basic Information.....	19
4-2 Ripping Tracks from Music CDs.....	20
4-3 Copying CD Tracks from Computer to the Player.....	22
5 - Helpful Information	
5-1 Troubleshooting.....	23
5-2 Technical Specifications.....	24
5-3 Important Safety Instructions.....	25
5-4 Product Care.....	26
5-5 FCC & ICES Compliance.....	26
5-6 Copyright.....	27
5-7 Demo songs.....	28
Limited Warranty.....	29

1 - Start to Use

1-1. Preface

Before you use this **DURABRAND** digital audio player MODEL MP-400, read all the following materials carefully. You can play your favorite MP3 and WMA music files with this portable player, and we hope you will enjoy this product.

Check List

This package contains:

DURABRAND 512 MB Audio MP3/WMA player Model MP-400

USB Cable

CD disc for Drivers (for Windows 98SE) / Instructions / Demo Music

1 size "AAA" Alkaline battery

Earphones with Neck Strap

Quick Manual

This booklet

NOTE: We suggest you put the Power-On for both the audio player and your PC with Internet connection ready, before you start the software installation. **NOTE!** Software installation is only needed if your computer has the older Windows 98SE operating system. If you have a newer operating system, such as Windows Me or XP, you don't need to install any software. This MP-400 is "plug and play" and ready to use when you connect the USB cable to the MP-400 and your computer (your computer must have a USB port).

1-2. Features

- Built-in 512MB flash memory (total space, including operating system files).
- Expansion SD/MMC card slot. Accepts up to 512MB SD (Secure Digital) / MMC (MultiMedia Card) card (not included) for extra storage.
- Plays MP3, WMA music format files and can store any digital file.
- Upgraded stereo earphones with neck strap.
- One AAA alkaline battery included.
- Standard Mini USB port Plug & Play (cable included).
- Supports Windows 98SE/Me/2000/XP, Mac OS X 10.2.6 or above.
- Blue momentary back-light.
- 6 EQ settings (normal, pop, rock, jazz, classic, bass).
- Playback sequence selection (normal, repeat one, repeat all and random).
- FF/REW for fast forward to content of a single song or skipping to next or previous song.
- Separate power ON/OFF button for easy operation.
- Lock button for locking all the buttons.
- USB 1.1 (Full speed) standard interface.

NOTE: WMA Music with DRM Protection cannot be supported by this audio player.

NOTE: This display does NOT support ID3 music title display.

1-3. Device Overview

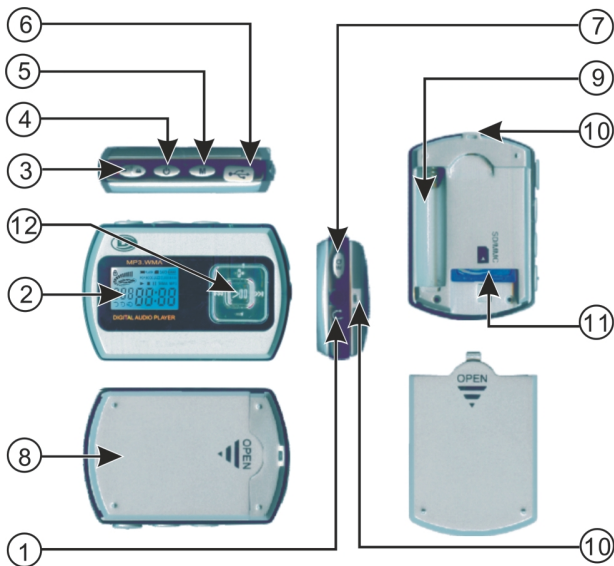










Fig. 1-3-1 Device Overview

- 1 EARPHONES jack** - Connect earphones or a home theater etc. with a 3.5mm stereo plug.
- 2 LCD screen** - Displays current status of the player, details on page 6.
- 3 Lock button**  - Locks controls to prevent accidental operation.
- 4 POWER button**  - Turns the player on or off.

- 5 **Memory selection / Play mode selection button**  - In STOP mode, press and hold to select between internal flash memory and external SD/MMC card (if card is inserted inside the set). Press a short time to select the 4-mode playback: normal, repeat 1, repeat all, random (details on page 15).
- 6 **Mini-USB port** - Lift the cover and connect the player to your computer using the supplied USB cable.
- 7 **EQ button** - Select the 6-Band Equalizer: normal, pop, rock, jazz, classic, bass.
- 8 **Back cover** - Remove the back cover to install 1 "AAA" battery or an optional MMC / SD memory card (up to 512MB).
- 9 **Battery compartment** - Install 1 AAA battery (alkaline).
- 10 **Hanging strap hole** - To hang the player to the earphones and conveniently carry these on your neck.
- 11 **SD/MMC socket (card slot)**  - Insert an SD/MMC card (up to 512MB) as extra memory.
- 12 **5-Direction control pad** - Controls playback and selects menu options:
 - **PLAY/PAUSE**  (Center button) - Start or pause playback (quick press).
 - **STOP**  (Center button) - Stop playback by pressing and holding.
 - **PREV**  (Left button) - Skips to the previous track. Press and hold to scan backwards.
 - **NEXT**  (Right button) - Skips to the next track. Press and hold to scan forwards.
 - **VOLUME VOL +** button (Up button) - Increase volume (details on page 14).
 - **VOLUME VOL -** Button (Down button) - Decrease volume (details on page 14).

1-4. LCD Display Overview

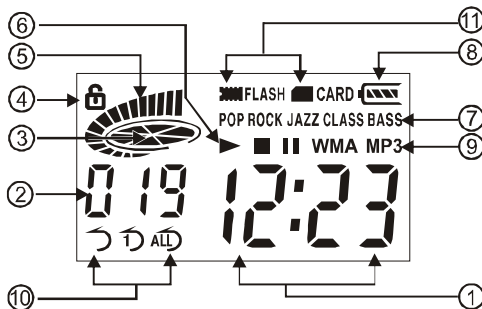


Fig. 1-4-1 LCD Display Overview

Indicators:

- Playing Time 12:23** - Shows song's playing time (12 minutes and 23 seconds) also displays Power ON/OFF, PC connection, for uploading and for downloading.
- Number 019** - Shows current track number 19 or total number of tracks.
- Status** - Music playing status (rotates while playing music).
- Lock** - Buttons are locked when flashes in the display.
- Volume** - Volume control with 16 levels (more bars = louder volume).
- Play status Icon** - Playing / Stop / Pause .
- EQ Setting** - Displays or changes current EQ mode (Pop, Rock, Jazz, Classic, Bass or no display for normal).
- Battery Level** - Displays battery capacity, Full Partial Empty.
- Music Format** - Shows "MP3" / "WMA" format music.
- Repeat Setting** - Displays playing mode (random, repeat one, repeat all).
- Memory selecting** - Internal flash memory / External SD/MMC card .

1-5. Battery Installation

- 1 Slide the battery cover off as shown.
- 2 Insert one AAA battery, beware of correct polarities (+ and -).
- 3 Put the cover back.

Battery Safety

- * Do not dispose of any battery in fire!
- * Do not put the battery in a damp place!
- * Please take out the battery if you don't use the player for a long time!
- * Battery should be installed by adults for safety.

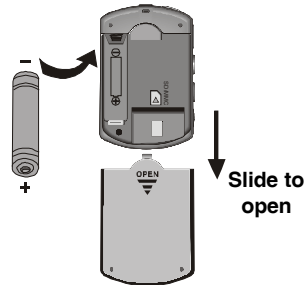


Fig. 1-5-1 Inserting the Battery

2- Software Installation

2-1. Basic System Requirements

Intel Pentium II 300 MHz or above

128MB RAM(minimum)

150MB free space in hard drive

USB port

CD-ROM drive

Operating Systems Supported: Windows 98SE or Windows Me or Windows 2000 or Windows XP or Mac OS X 10.2.6 or above.

NOTE: For Windows Me/2000/XP users, no software installation is needed. The set is fully plug and play. For older computers running on Windows 98SE, you will need to install drivers from the supplied disc. For Windows 95 or earlier users, this set will not work and we recommend you upgrade your operating system and get a USB port.

2-2. Installing Software Driver and Utilities (For Windows 98SE users only)

For Windows 98SE only, if you have a newer system like Windows XP or Me, go to page 9.

- 1 Turn on your computer and insert the Driver Setup disc to the CD-ROM drive.
- 2 The computer screen will display the DURABRAND welcome page.
- 3 Select "Install", click the "Windows 98SE driver".

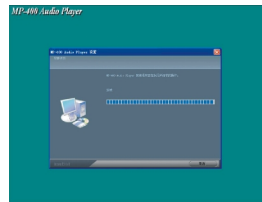
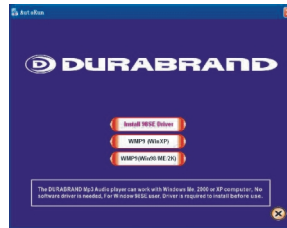


Fig. 2-2-1 Installing Software Driver and Utilities

NOTE: No driver is required for Windows Me, XP, 2000 or Mac OS X 10.2.6 or above.

4 Install Windows Media Player 9.0.

If you have not installed Windows Media Player 9.0 (or later), you will be prompted to install it or update your current version. (Details of Windows Media Player 9.0 on Pages 19-22).

5 Browse the Driver Setup disc to check out:

- Windows 98SE Driver
- Windows Media Player 9.0
- Operating Instructions (in PDF form)
- Adobe PDF Reader (In case you don't have this, it can be installed from the disc.)

6 Installation is complete!

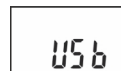
You are now ready to connect the Audio Player to your computer.

To **Uninstall** the Win98SE Driver, run "1. Start → 2. MP-400 MP3 Audio Player → 3. Uninstall".

2-3. Connecting the Audio Player and Computer

Both PC or Mac users must use the USB cable to connect the player and computer before you can download or upload music files to the computer.

- 1 Connect the smaller plug of the USB cable to the mini-USB port on the player as shown. Plug only fits one way, if the plug does not match the mini-USB port, don't force it, just reverse it and try again.
- 2 Connect the larger plug of the USB cable to any available USB port on your computer. First time connection of the player to the computer with Windows Me, 2000, or XP, the computer will detect "New Hardware" and software drivers will be installed by Windows automatically.
- 3 At the same time, the player will display the "USB" Mark on the player's LCD display.
- 4 You are now ready to copy music files or data to the player. It will display "dn" when downloading (when you copy music files from computer to player), and displays "up" when uploading (when you copy files from player to computer).



Shows when USB is connected



Shows when uploading



Shows when downloading

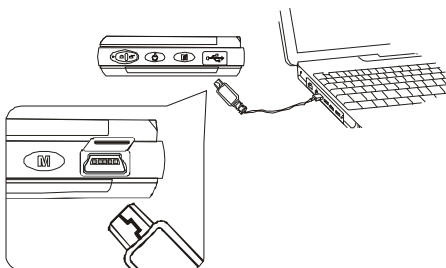


Fig. 2-3-1 Connecting the Audio Player and Computer

NOTE: If you are using Windows 98SE, you must first install Windows 98SE driver, see page 7.

2-4. Using the Audio Player as a Removable Drive (USB Disk)

The Audio Player can also be used as a removable drive (or known as a USB flash drive). You can drag and drop files into the player. (Up to the limit of about 512 MB for internal memory or external card.)

- 1 Connect the USB cable to the computer and MP-400.
- 2 Click “My Computer” icon on your Windows desktop, and it will show up as a “Removable Disk” on the Desktop of the Windows.

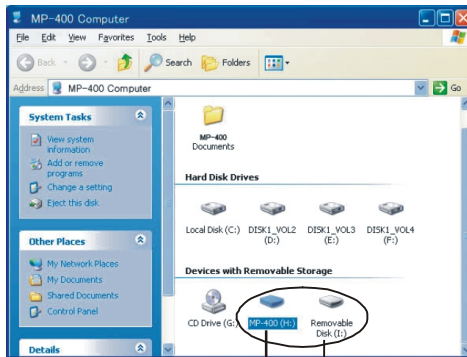


Fig. 2-4-1 Using the Audio Player as a Removable Drive

3 Click the “Removable Disk” icon to browse for content.

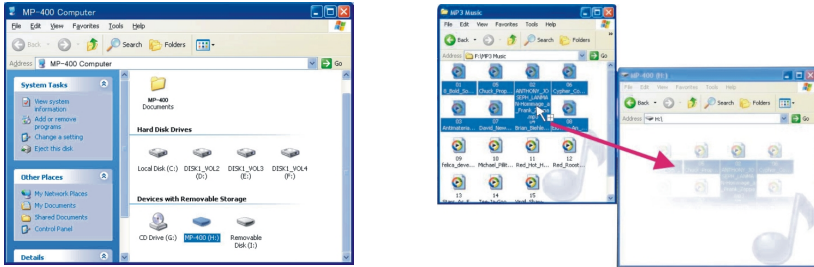


Fig. 2-4-2 Using the Player as a Removable Drive

4. Select the folders or songs or files you want to copy to your MP-400.
5. After you have highlighted the files you want to copy, click on “edit” (next to file on top), click on “copy to folder” (below edit).
6. Find the removable disc (such as E:) and click on it to highlight it for copying.
7. The file that is copying to your MP-400 will show.
8. When you finished copying files, see next chapter (2-5. disconnecting the audio player from your computer) to safely disconnect the player.

NOTE: This player does not support DRM-protected files (Such as music downloaded from some online music stores).

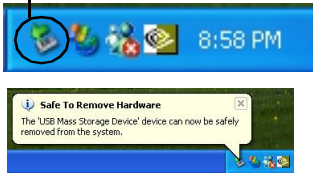
2-5. Disconnecting the Audio Player from Your Computer

For Windows Me/2000/XP users, the player can be disconnected safely as follows:

- 1 Click the “Safely Remove Hardware” icon in the Windows Toolbar (on the right bottom corner near the clock icon on your computer).
- 2 From the list of Hardware Devices, select the player.
- 3 Click “Stop” button.
- 4 Click “OK” to confirm.
- 5 Click “Close” after finished.
- 6 Now, it is safe to disconnect the player.

NOTE: Do not unplug the Player while there is data transferring between the player and the computer or some data may be lost.

Click on this icon to disconnect the USB cable safely.



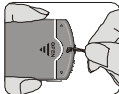
NOTE: Usually a small icon will appear, clicking this icon will show the “safely remove hardware” screen.

Fig. 2-5-1 Safely Disconnecting the Player

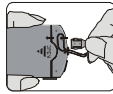


3 - Basic Operation of the Audio Player

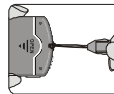
3-1. Hanging the Earphones and Neck Strap Connection



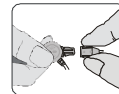
1. Slide the thin part of the neck strap into the hole



2. After it is through, loop the lock through it




3. Pull to close loop



4. Insert the lock-pin correctly.



5. Plug the earphones plug into the jack marked 



6. Insert the earphones in your ears




7. Please note the earphones are marked R and L




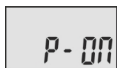
8. Hang the Player with the neck strap

Fig. 3-1-1 Using the Hanging Earphones

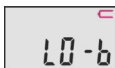
3-2. Player Power On/Off

To turn on the player, press and hold the POWER  button, the set will start to play.

To turn the player off, press and hold the POWER  button again.



Shows when you press and hold the Power ON/OFF button To turn on the player.



It will show if the battery is very low or if the battery is almost empty, please insert a fresh battery. (If the battery is completely dead, nothing will show in the display).



Shows when you press and hold the Power ON/OFF button to shut off the power.


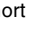



It will show the full battery if the battery is new and the set is ON.

Fig. 3-2-1 Player Power ON/OFF

3-3. Music Playback

NOTE: Some buttons can perform more than one function, A short time press or long holding press may be needed to do different operations.

- To **play** the current track, press the PLAY/PAUSE button  a short time (about 0.5 second).
- To **pause** playback, press the PLAY/PAUSE button  a short time (about 0.5 second).
- To **stop** playback, press the STOP button  a long time (about 1.5 seconds).

PLAY/PAUSE/STOP



PLAYING



PAUSE



→STOP

NOTE: The Player has an Auto-Power Off function to economize your battery (it will automatically power off after 60 seconds in STOP status and 120 seconds in PAUSE status if you don't press the play button).



It will display the "NO SO" (NO SONG) if the Flash memory or SD/MMC card has no music files, simply transfer files into your player.

Fig. 3-3-1 Music Playback

NOTE: Your player comes with a few demo songs, you may keep these or delete them.

- To **skip** to the previous track (or to the start of the current track), press previous button **⏮** quickly.
To **skip** back in the music, press and hold the previous button **⏮** down.
- To **skip** to the next track, press the next button **⏭** quickly.
To **skip** ahead in the music, press and hold the next button **⏭** down.



Fig. 3-3-2 Music Playback

3-4. Adjusting the Volume

To adjust the volume, press **VOL +** or **VOL -**.

LOWER VOLUME



HIGHER VOLUME



Fig. 3-4-1 Adjusting the Volume - VOL - and VOL +



3-5. Locking the buttons

To prevent accidentally turning the set on, slide the lock button to the right, the lock icon will flash in the display and a red dot will be visible at the left side of the slide button. All the buttons will be locked and not working till you slide the lock button to the left (red dot will be not showing).



3-6. Adjusting Equalizer and Play Modes

The 6-band equalizer can let you personalize your favorite sound effect of the player during play. When you play the music:

1. Press the Equalizer button **(EQ)** to select from the 6-band EQ: **normal (no display)**, **pop, rock, jazz, classic, bass**



Fig. 3-6-1 Pressing the EQ-button to select from the 6-band EQ

2. Press the M-button **(M)** a short time to select from the 4-mode playback sequence:
Normal: Plays all the songs in sequence, and the player will be automatically turned off when all the songs have been played.
Random: Plays all the songs in random order, and the player will be automatically turned off when all the songs have been played.
Repeat one: Plays one song over and over.
Repeat all: Plays all the songs then repeats them over again, until you press STOP or OFF.



Fig. 3-6-2 Pressing the M-button a short time to select from the 4-mode playback sequence

3-7 Using an External SD/MMC Memory Card (Optional - not included)

1. Turn off the player. Open the back cover, see (1) in diagram.
2. Confirm the card is SD/MMC type (maximum size 512 MB) and insert the card with correct direction, see (2) in diagram.
3. Turn on the player. In the **stop mode**, press and hold the **(M)** Memory selection button (See **Fig. 1-3-1 Device Overview - (5)** on page 4) to select the SD/MMC card.
4. To remove the SD/MMC card, first turn off the player, then press and remove the SD/MMC card.

NOTE: The external SD/MMC card will need more battery current to boot, so please change a new battery if you can't power on when you are using the external SD/MMC card.

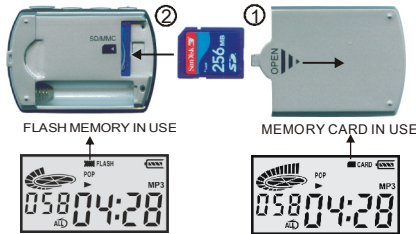


Fig. 3-7-1 Using the External SD/MMC Memory Card

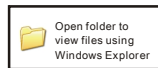
3-8 Deleting Files or Music from Your Player

1. Connect the USB cable to the computer and MP-400. After a few seconds the computer will "recognize" your player & display:

Your MP400 display will show:



Your computer may show:



2. Click ok on your computer's mouse and Windows explorer will open (or manually open Windows explorer).
3. A listing of files on your MP-400 (usually drive E:\ or F:\ or G:\) will be shown.

4. Select the songs or files you want to delete, this can be 1 file (highlighted in a darker color), or many files (many are highlighted). To highlight many files, hold down the shift button while pressing the down arrow on your computer. To select all the files in a directory, press and hold down the Ctrl button then press the A button, this will highlight (darken all the files).
5. After you have highlighted the files you want to delete, press the DELETE button on the keyboard of the computer, the computer will ask you if you are sure to delete the selected files, select " YES ".

NOTE: You can delete the Demo songs which are in the MP3 player (or any songs or files) if you don't like them and replace them with other songs you like.

3-9 Transferring files and Music from your Computer to the MP-400

If you also want to download new files or music into your MP-400 player after **step 3-8**, please do the following:

1. Go to the folder that contains your files or music or by going up one 📁 level to show all directories, then select the proper directory letter.
2. Select the folders or songs or files you want to copy to your MP-400.
3. After you have highlighted the files you want to copy, click on edit (next to file on top), click on copy to folder (below edit).
4. Find the removable disc (such as E:) and click on it to highlight it for copying.
5. The file that is copying to your MP-400 will show.
6. After this, your copying is completed and your music is now copied to your player.

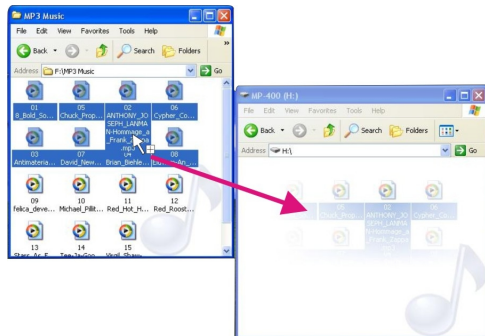


Fig. 3-9-1 Transferring Files and Music from your Computer to the MP-400

3-10 Storage Information of the Player

To check the storage of the player, first connect the player to the computer. Two “Removable Disk” icons will show up in Windows Desktop. MP-400 is the internal flash memory disk, Removable Disk is the SD/MMC disk. Highlight the disc you want to check. Right click on the mouse (press the mouse right button) and then click on “Properties”, then you can see the storage information of this player.

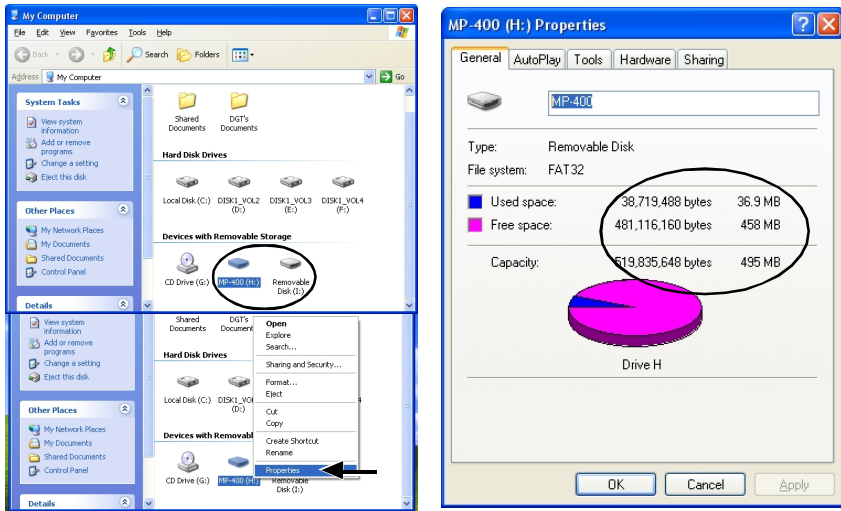


Fig. 3-10-1 Storage Information of the Player

4 - Using Microsoft's Windows Media Player

4-1. Basic Information

You can install Windows Media Player 9.0 from the supplied Driver Setup disc (or it may already be on your computer). Details of the Taskbar of Windows Media Player as below:

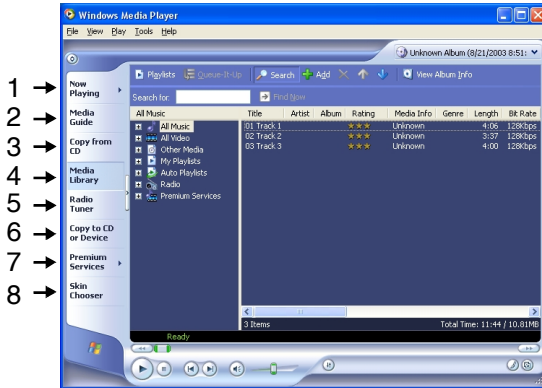


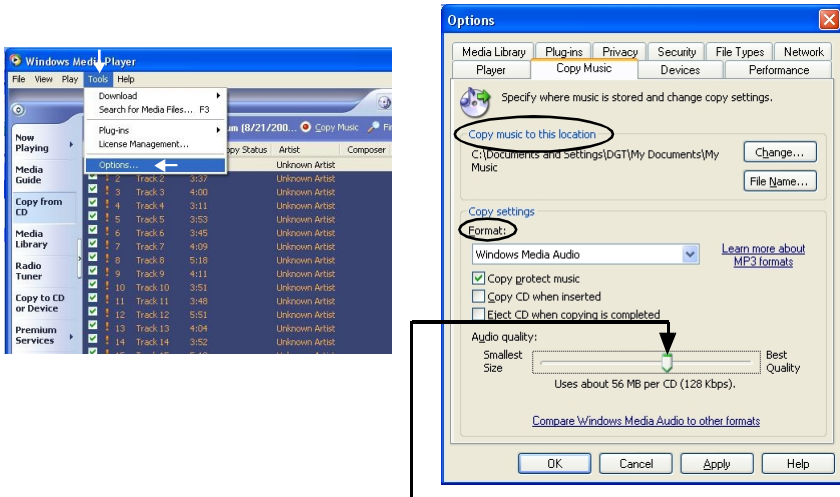
Fig. 4-1-1 Using the Windows Media Player

1. **Now Playing** - Check / listen to currently playing media tracks.
2. **Media Guide** - Search of media files (music, movies, etc.) online.
3. **Copy from CD** - Copy and convert CD Audio tracks to WMA format.
4. **Media Library** - Create lists and manage media files.
5. **Radio Tuner** - Tune into streaming radio stations.
6. **Copy to CD or Device** - Copy tracks to your player or to a recordable CD (CDR).
7. **Premium Services** - Subscribe to online music service, where search and purchase of music tracks take place.
8. **Skin Chooser** - Select different outlook screen display.

4-2. Ripping Tracks from Music CDs

Windows Media Player can also help you to build up a media library, by converting your Audio CDs to WMA format so that you can transfer them to your MP-400 player. WMA format condenses the files to a smaller space so that more songs can fit into your MP3 player.

1. Insert an audio CD into your computer.
2. Setup WMA music encoding options by: Tools > Options > Copy Music.



Adjusting the audio quality will allow more or less songs to fit into your player. The sound will also be better if it is a larger file (best quality) but you will fit less songs into the player.

Fig. 4-2-1 Ripping Tracks from Music CDs - Setup the Parameters

- Click "Copy from CD". A list of contents of the CD will come out.
- Click the "Check Box" next to the track you want to select (for example #2, #3, #4, and #5) for ripping into WMA format.
- Click the "Copy Music", copy options may pop up, if it does, select in option 1 **"don't add copy protection"**, click on "next" and copy option 2 **"keep the formats the same"** then click "finish" to begin encoding (changing to WMA) the selected tracks.

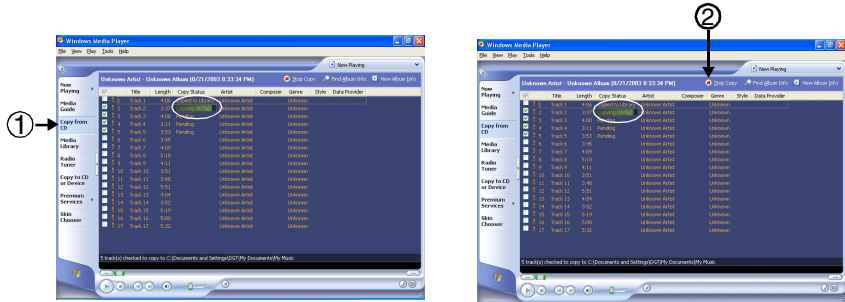


Fig. 4-2-2 Ripping Tracks from Music CDs - Start copying from CD

- After conversion, Windows Media Player will automatically add new tracks to the media Library.

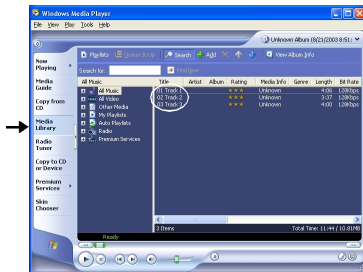


Fig. 4-2-3 Ripping tracks from Music CDs - Automatically adds them to your media library

4-3. Copying CD Tracks from Computer to the Player

To copy music (such as *.WMA) from your computer to the player :

1. Connect the player and your computer by using the supplied USB cable.
2. Click "Copy to CD or Device".
3. Under "Items on Device," select "Removable Disk" to view the contents of the player.
4. Under "Items to Copy", browse the folder content that you want to add.
5. Click the "Check box(es)" next to the selected track name(s).
6. Click "Copy" and the selected copies will transfer to the player.
7. The selected track(s) are copied to the player.

Copying was finished, see pages 11-12 to safely unplug the player, you may then move the files to any other computer which has a USB cable.

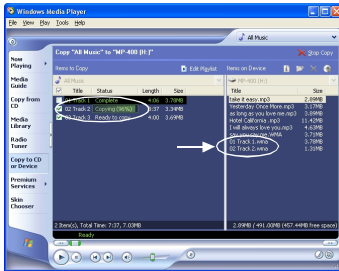


Fig. 4-3-1 Converting CD tracks to the player

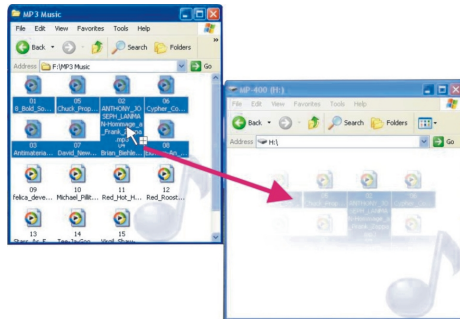


Fig. 4-3-2 Copying the *.MP3 or *.WMA files to your player directly

NOTE 1: This player cannot support WMA music with DRM protection.

NOTE 2: You can copy the *.WMA (without DRM protection) or *.MP3 music or any other data files to your player directly from a disk or folder.

5 - Helpful Information

5-1. Troubleshooting

Symptoms	Causes	Solutions
Set does not play normally.	Battery is weak (it may test OK on tester but it is weak for MP3 operation).	Replace battery with fresh alkaline battery. Battery life with a fresh battery is about 6 hours for continuous play (rechargeable battery has 1/2 of that life).
	The type of the files are not supported on this MP3 player.	This MP3 player can only play MP3 and WMA files. You can't play AAC files or DRM protected files.
MP3 Player will not turn on.	Dead or weak battery.	Replace battery with fresh one.
	Lock button is on.	Slide the lock button to OFF.
No sound from earphones.	The external SD/MMC card will need more battery current to boot.	Replace battery with fresh one.
	VOLUME control is set to minimum.	Increase the VOLUME by pressing VOL +.
Sound is distorted.	Weak battery.	Replace with a fresh battery.
	Music is too loud.	Lower the VOLUME control by pressing the VOL - button.
Sound skips or is distorted.	Weak battery.	Replace the battery with a new one.
	Music was not copied correctly.	Recopy the music using a slower speed.
Buttons do not work.	The keys were locked.	Slide the lock button to the left.
Can not transfer files.	The MP3/WMA file may be corrupted or damaged.	Download or create the MP3/WMA file again. Be sure to create WMA file with no copy protection.
Can not find the USB jack on the computer.	Memory is full.	Erase some files you don't need (see page 16).
Can not find the USB jack on the computer.	Some computers (older ones) do not have a USB jack.	Contact your computer maker or ask your friend who knows computers or call customer service.
No display shows.	Battery is dead.	Replace the battery.
Only 490 MB shows as available in MP-400.	MP3 player is plugged into the computer.	This is normal for all MP3 players.
Your computer takes a long time to boot up.	MP3 player is plugged into the computer.	Do not keep MP3 player plugged in while rebooting the computer.

5-2. Technical Specifications

MP3 Decoding Format	Constant or Variable bit rate (8~320kbps) Sampling frequencies 8-48 kHz
WMA Decoding Format	Constant bit rate (5~192kbps), Sampling frequencies 8-48 kHz
Internal Flash Memory.....	512MB NOTE: Some of the 512MB memory is used by the operating system. The actual memory available is less than 512MB as in all MP3 players.
External Memory Support.....	SD/MMC card (not included) any of these sizes are OK (16/32/64/128/256/512MB)
LCD Display	Large size Segment LCD display
LCD Back-Light	Blue back-light
USB Interface	USB 1.1 Full Speed (mini-5P USB connector)
Maximum Output	12mW + 12mW @32 ohms
S/N Ratio	>50 dB
THD	0.01~5%
Frequency Range	20Hz~20 kHz
Battery	1 x AAA Alkaline Battery-included
Working Temperature.....	0-45 °C
Dimensions.....	70x47x16.5 mm / 2.76" x 1.85" x 0.65" (LxWxD)
Weight.....	35g, 0.08 oz (without the battery)

5-3. Important Safety Instructions

1. Read and keep these instructions. Follow all instructions. Heed all warnings.
2. To reduce the risk of fire or electric shock, do not use or operate this apparatus in or near water or wet locations. Do not spill liquid on this apparatus.
3. Apparatus should not be exposed to dripping or splashing water and no objects filled with liquids, such as vases, should be placed on the apparatus.
4. Do not disassemble or modify this apparatus. No user-serviceable parts are inside. Refer all servicing to qualified service personnel.
5. Servicing is required when the apparatus has been damaged in any way, such as when liquid has been spilled or objects have fallen onto the apparatus, the apparatus has been exposed to rain or moisture, does not operate normally, or has been dropped. Do not use in places exposed to strong magnetic or electrostatic fields (close to TV or speakers). Do not use in places where the humidity is excessively low.
6. Risk of explosion, damage or battery leakage is possible if the battery is replaced incorrectly or by an incorrect type. Never attempt to charge a non-rechargeable alkaline battery. Dispose of used batteries according to instructions or local laws.
7. Use of earphones while operating a vehicle is not recommended and is unlawful in some states and areas. Stop operating this apparatus if you find it disruptive or distracting while operating any type of equipment.
8. Listening to music at full power over extended periods of time can be damaging to the hearing of the user.
9. Do not clean the apparatus with solvents, chemicals or abrasive cleaners. If necessary, use a soft cloth to clean the apparatus, only use attachments/accessories specified by the manufacturer.
10. Battery should always be installed or removed by an adult for safety.
11. Do not leave the battery installed in the set if the set will not be used for long periods of time (sometimes batteries leak).

5-4. Product Care

1. Exposure to extreme hot or cold temperatures may cause damage to the player or cause it to malfunction. Do not expose the player to direct sunlight continuously or leave it in a vehicle with the doors and windows closed. The case may become deformed or discolored or the player may malfunction. Do not use the player near an open flame.
2. If moving from a cold environment to a warm environment, let the player's temperature stabilize before operation.
3. Keep dirt, sand, dust, and moisture from entering the player. Do not use in areas of excessive dust.
4. Do not use in places where the humidity is excessively high.
5. Do not drop or subject the player to shock.
6. If interference occurs close to radios or televisions, move the player away from them.

5-5. FCC & ICES Compliance

This device complies with Part 15 of the FCC Rules and complies with Canada ICES-003 Rules. Operation is subject to the following two conditions:

1. This device may not cause harmful interference, and
2. This device must accept any interference received, including interference that may cause undesired operation.

This equipment has been tested and found to comply with the limits for a Class B digital device, pursuant to Part 15 of the FCC and Canada ICES-003 Rules. These limits are designed to provide reasonable protection against harmful interference in a residential installation. This equipment generates, uses and can radiate radio frequency energy and, if not installed and used in accordance with the instructions, may cause harmful interference to radio communications. However, there is no guarantee that interference will not occur in a particular installation. If this equipment does cause harmful interference to radio or television reception, which can be determined by turning the equipment off and on, the user is encouraged to try to correct the interference by one or more of the following measures:

1. Reorient or relocate the receiving antenna.
2. Increase the separation between the equipment and receiver.
3. Connect the equipment into an outlet on a circuit different from that to which the receiver is connected.
4. Consult the dealer or an experienced radio/TV technician for help.

5-6. Copyright

© 2005 DURABRAND All rights reserved. Marketed by Wal-Mart Stores, Inc. Bentonville, AR 72716.

DURABRAND shall not be liable for any errors contained herein or for any damages arising out of or related to this document or the information contained herein, even if DURABRAND has been advised of the possibility of such damages. This document is intended for informational and instructional purposes only. DURABRAND reserves the right to make changes in the specifications and other information contained in this document without prior notification. DURABRAND disclaims any obligation to update the information contained herein.

MPEG Layer-3 audio coding technology licensed from Fraunhofer IIS and Thomson Multimedia.

This product includes technology owned by Microsoft Corporation and cannot be used or distributed without a license from Microsoft Licensing, Inc. Microsoft, Windows Media, and the Windows Logo are trademarks or registered trademarks of Microsoft Corporation in the United States and/or other countries.

All other product names may be trademarks of the companies with which they are associated.

This product is manufactured by a wholly owned subsidiary of Daiwa Associate Holdings Ltd for DURABRAND for distribution by customers of DURABRAND.

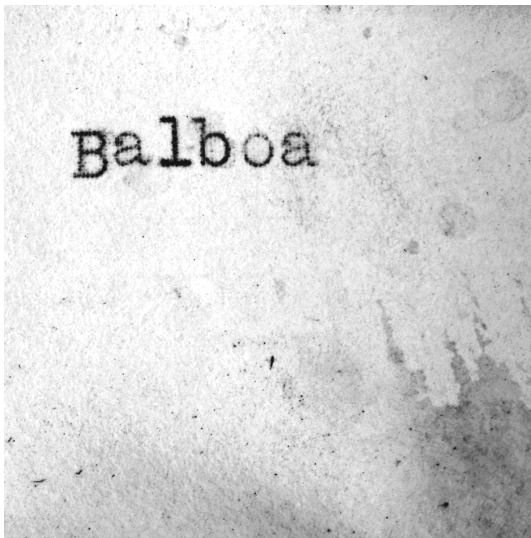
Daiwa Associate Holdings Ltd and/or her wholly owned subsidiary are licensee of Sisvel, MPEG-Audio, for using MPEG audio compression technology in this product and are authorized by Adobe to distribute "Adobe Reader[®]" and Microsoft to distribute "Windows Media Player[®]" together with this product.

Warning - Use of this product is for your personal use only. Copying CDs or downloading music files for sale or other business purposes is a violation of copyright laws. It may also be a violation of copyright law to download files without the permission of the copyright owner.

5-7. Demo songs

Music provided courtesy of Balboa. <http://www.BalboaNYC.com>

Lillies and Stray (Instrumental) written and performed by
Loam Disher, Torello Disher, Robb Bruns and Tate Overton.



LIMITED WARRANTY

We warrant this product to be free from defects in material and workmanship under normal use for a period of 1 year after purchase and we will repair it free of charge or replace it at no charge, should it become defective under this warranty, providing you submit proof of purchase (sales slip) with the set.

During the initial 1 year period after original purchase, we will service the set that is returned to LENOXX ELECTRONICS CORP, prepaid, at no charge. After the initial 1 year period expires, we will exchange, at no charge, any part that is defective, but will charge for the cost of labor, return postage paid by Lenoxx.

This warranty does not apply to any products which have been subject to misuse, neglect or accident. This warranty does not cover broken earphones or cabinet. UNDER NO CIRCUMSTANCES WILL LENOXX ELECTRONICS CORP. BE LIABLE FOR ANY INCIDENTAL OR CONSEQUENTIAL DAMAGES. Some states do not allow the exclusion or limitation of incidental or consequential damages, so the above limitations or exclusions may not apply to you.

This warranty gives you specific legal rights, and you may also have other rights which vary from state to state. The following charges apply to repairs beyond the warranty period: \$30.00. Be sure to pack carefully and return postage paid insured together with your money order (personal checks will not be accepted) and sales receipt to: LENOXX ELECTRONICS CORP., 2 GERMAK DRIVE, CARTERET N.J. 07008

For customer service Dial: 1-800-315-5885

(MONDAY - THURSDAY 8:00 AM - 5:00 PM, FRIDAY 8:00 AM - 1:30 PM EST)

<http://www.lenoxx.com>

© 2005 LENOXX ELECTRONICS CORP.
2 GERMAK DRIVE
CARTERET, N.J. 07008
MADE & PRINTED IN CHINA

Free Manuals Download Website

<http://myh66.com>

<http://usermanuals.us>

<http://www.somanuals.com>

<http://www.4manuals.cc>

<http://www.manual-lib.com>

<http://www.404manual.com>

<http://www.luxmanual.com>

<http://aubethermostatmanual.com>

Golf course search by state

<http://golfingnear.com>

Email search by domain

<http://emailbydomain.com>

Auto manuals search

<http://auto.somanuals.com>

TV manuals search

<http://tv.somanuals.com>