



PLI-1000

PLI-2000

LevelOne Homeplug Utility

USER MANUAL

Introduction

The Homeplug Configuration Utility for PLI-1000 and PLI-2000(USB & Ethernet) enables the user to find Homeplug devices on the powerline network, measure data rate performance and ensure privacy by setting a user defined network private password. This utility gives you the capability to set up a network password on the local device connected to the computer where the utility is running. It gives you as well, through the advanced option, the capability to set up a network password remotely on other Homeplug devices through the power line.

It is recommended that the same PC chosen for initial execution of this utility remain the PC of choice for subsequent network encryption updates. Network setup information is stored on the PC and is used to facilitate follow-on network encryption sessions.

Before running this utility, make sure that a Homeplug device is properly installed and connected to your computer.

Running the utility

To run the utility, double click the **Homeplug Configuration Utility** icon on your desktop.



The wizard has five different dialog screens options accessible through the following tabs : **Device**, **Network**, **Security**, **Advanced** and **About**. In the coming sections, we will explain the purpose and the functionality of each of them.

NB: As a general rule that applies to dialog screens, pressing:

The **OK** and **Cancel** buttons means " exit utility "

Device dialog screen

The **Device** dialog screen provides a list of your Homeplug devices connected to the computer where the utility is running and average data rate performance of your powerline network.

Initially, the wizard starts the **Device** dialog screen.

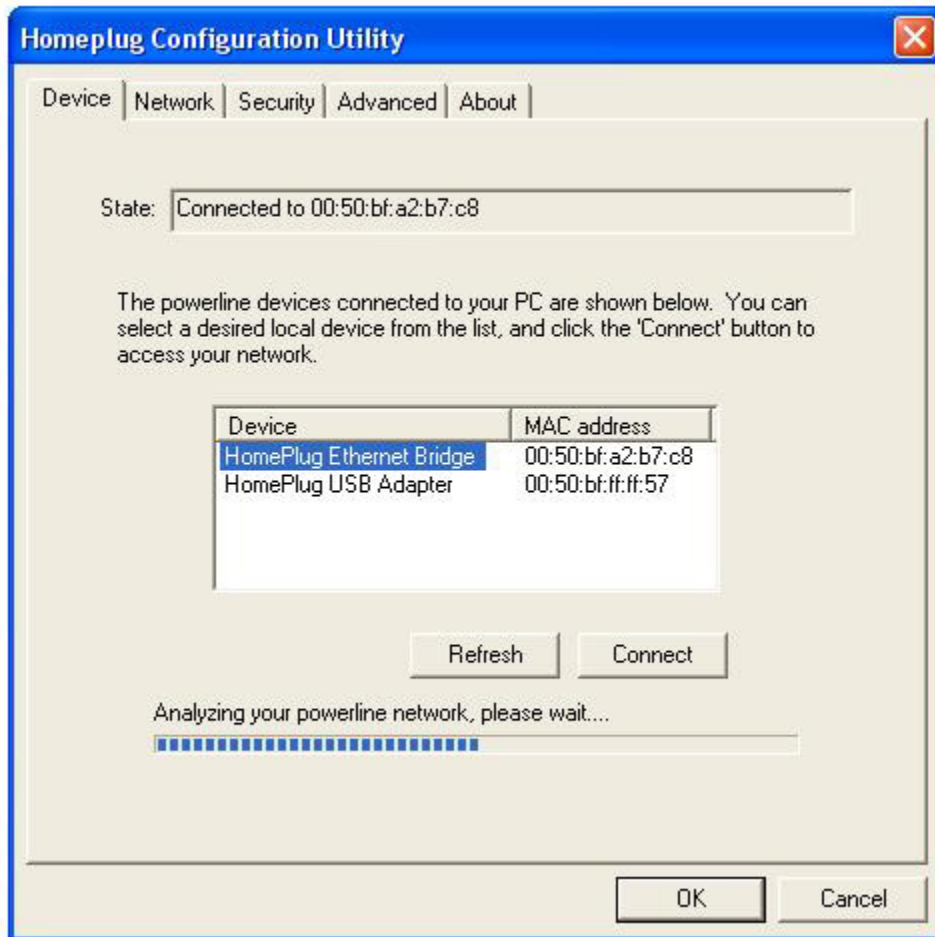


Figure 1 Initial screen when wizard is started

Once the analysis is done, a screen similar to Figure 2 appears.

In the text list box, it reports back all Homeplug devices found that are locally connected to the computer where the utility is running.

In most cases, one device only is listed.

In case you have more, click on one of them and hit **Connect**. Make sure that the **State** box indicates that your PC is connected to the same device. Now you are ready to manage the powerline network connected to this device, ensure its privacy and measure its data rate performance.

Press **Refresh** button to refresh the search of the powerline devices connected to your computer.

The progress bar will change into a status bar indicating the network average data rate.

The color of the bar reflects the average performance of the powerline network :

Green : Excellent performance

Yellow : Fair performance

Red : Poor performance

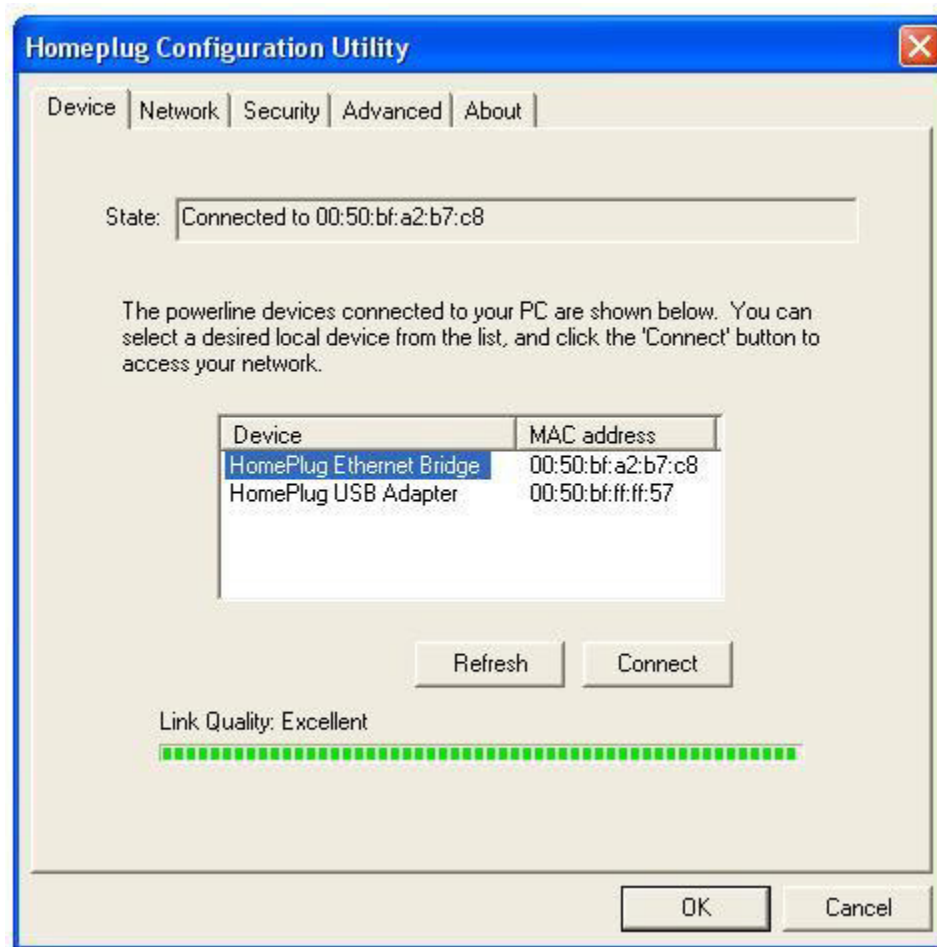


Figure 2 Device Dialog screen

Network dialog screen

The **Network** dialog screen provides detailed information about your powerline network.

The text list box shows all Homeplug devices found on your powerline network identified by their MAC addresses. A second column indicates their data rate measurements in Mbps.

Press **Scan Powerline Network** button to refresh the listed information.

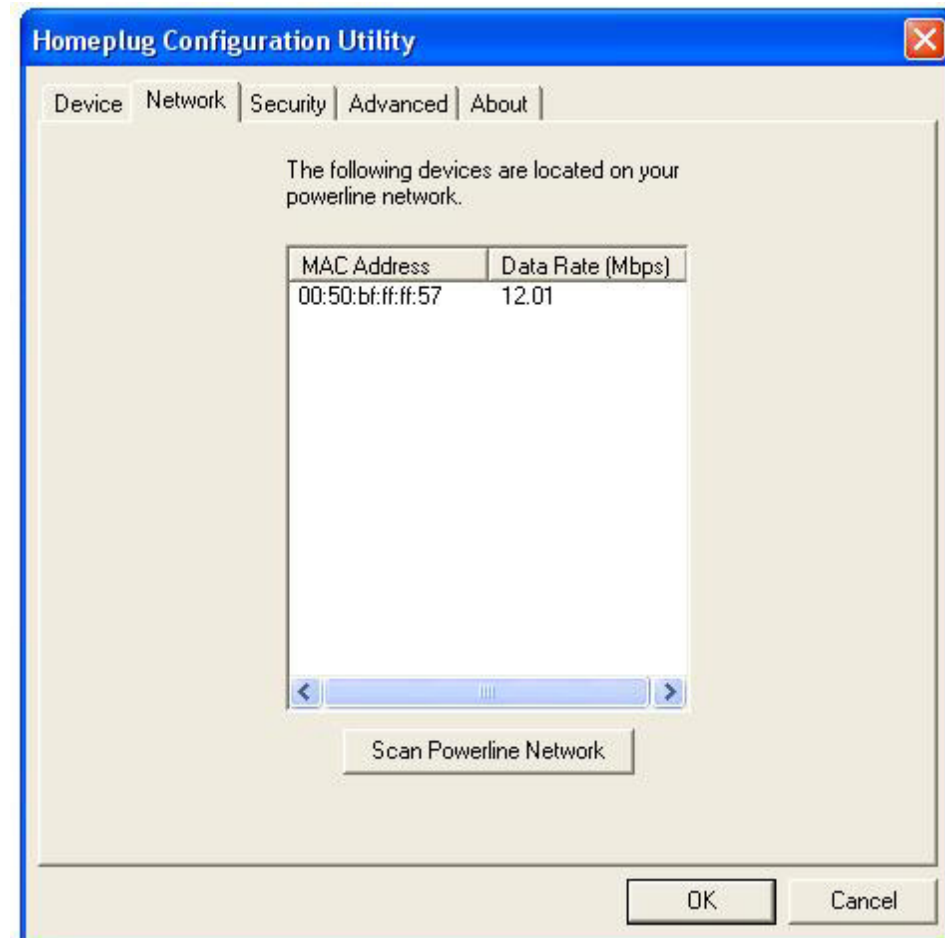


Figure 3 Network dialog screen

Important :

In case a Homeplug device in your home is not listed in the screen above, make sure that its network password has not been made private previously with a different password than your current private network password.

You can always reset a Homeplug network password to the universal one by running the **Homeplug Configuration Utility** on the PC attached to this device and choose "HomePlug" as the network password.

Security dialog screen

All Homeplug devices are shipped using **“HomePlug”** as a network password. The **Security** dialog screen allows you to change this network password and set your own private password and apply it to the Homeplug device connected to the computer where the utility is running.

Hit **Restore Default** button to restore the original network password **“HomePlug”** and apply it locally.

Hit **Set Local** button to change the network password locally.

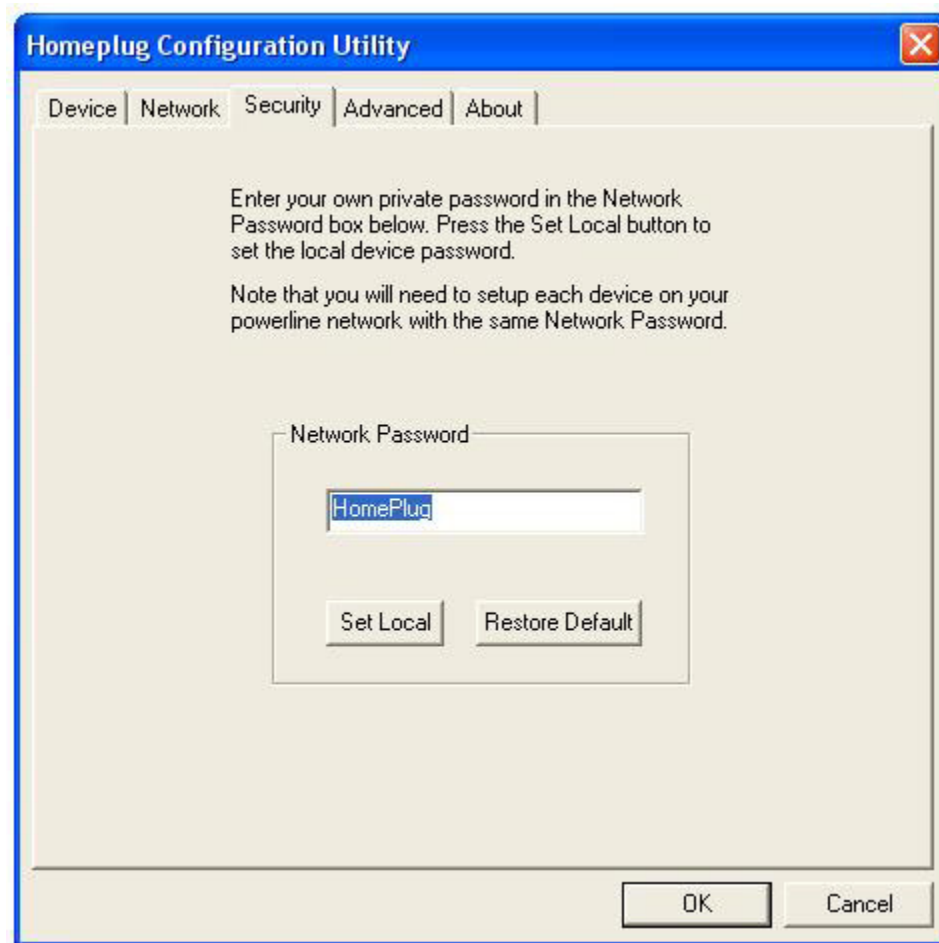


Figure 4 Security Dialog screen

Important: Your private network password must have between 4 and 24 characters. The password is case sensitive. The password can include any letters of the alphabet, numbers or punctuation marks. Remember this password as it will be needed when adding other devices to the network later.

Advanced dialog screen

The **Advanced** dialog screen allows you to set up a network password remotely on other Homeplug devices through the powerline.

Type your private network password into the **Network Password** text box.

The other devices on the network with Homeplug capabilities will have a different password printed on either the box itself or in the documentation. Find the passwords for all devices you want to manage and type them one by one into the **Device Password** text box and hit **Add**. This will add the passwords to **Remote Passwords** text list box and set them to the currently defined Network Password.

Note: The device must be present on the powerline in order for the password to be confirmed and added to the Remote Passwords list.

The **Status** indicates whether each device is successfully set to the **Network Password**. "OK" indicates success while "Fail" indicates a failure.

Hit **Set All** to apply your private network password to all devices that are listed in the **Remote Passwords** text list box and to your local device connected to the computer where the utility is running as well.

Select a password and Hit **Remove** to remove it from the list.

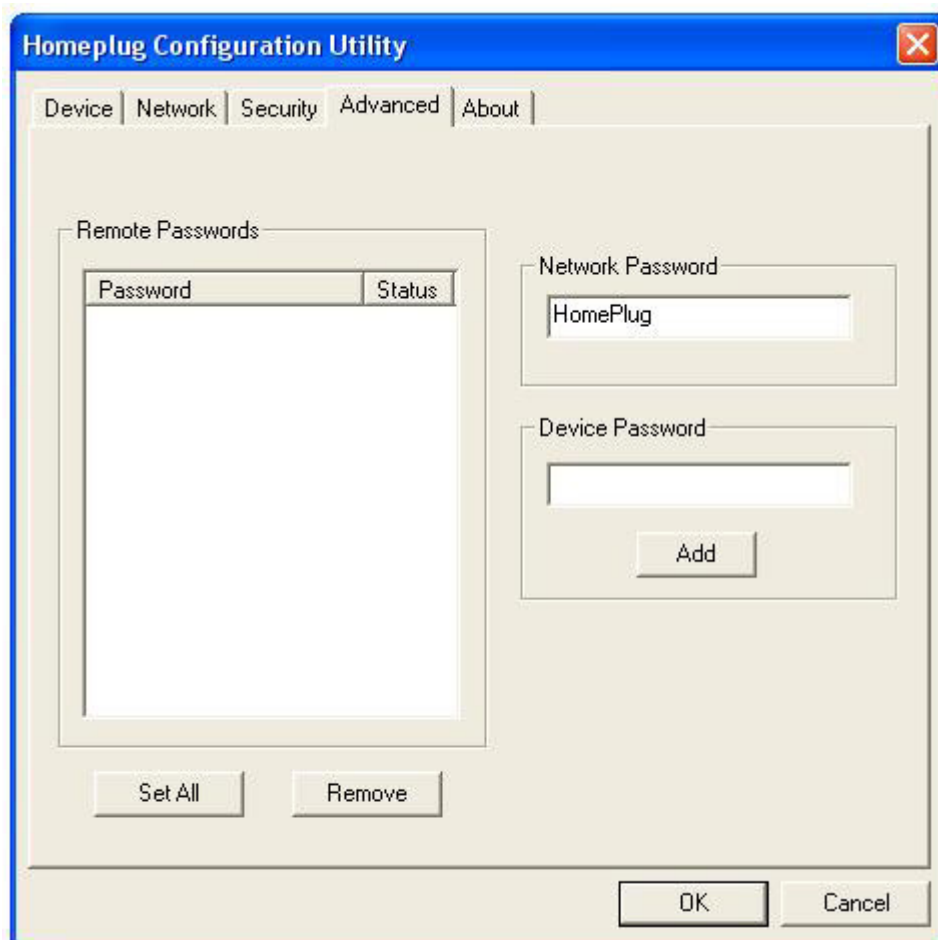


Figure 5 Advanced dialog screen

About dialog screen

The **About** dialog screen shows the software version and provides a hot key to access the Intellon website

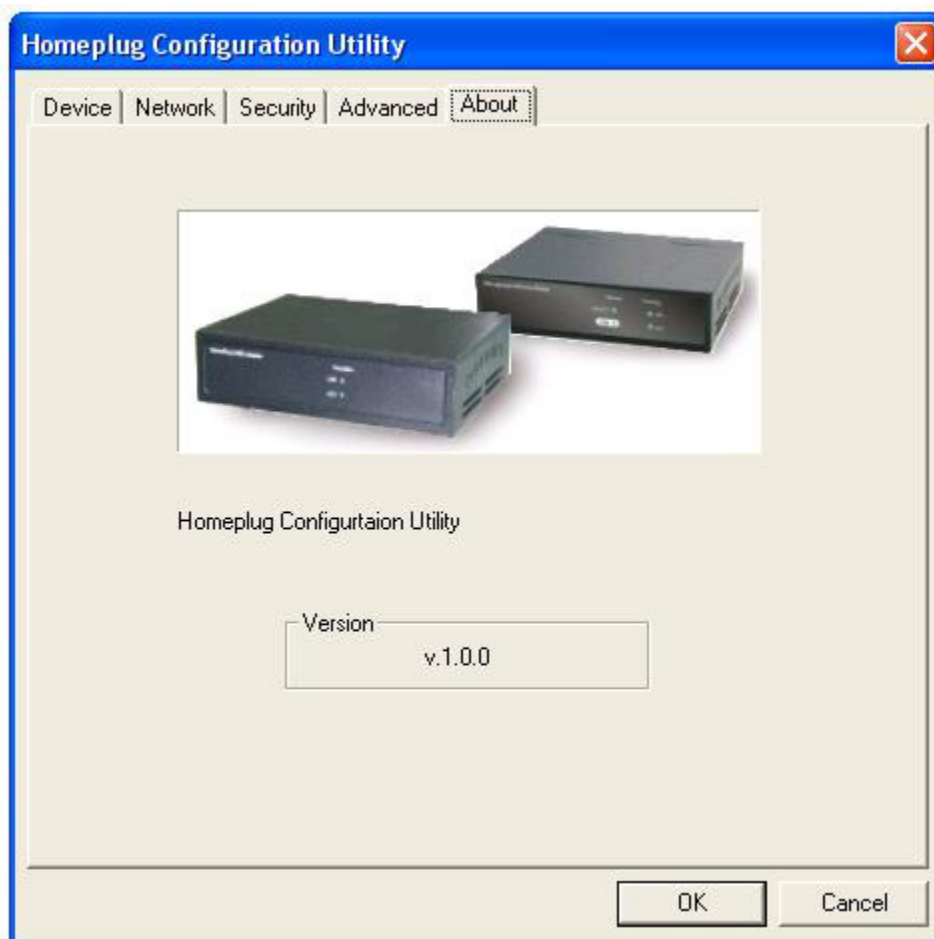


Figure 6 About dialog screen

Free Manuals Download Website

<http://myh66.com>

<http://usermanuals.us>

<http://www.somanuals.com>

<http://www.4manuals.cc>

<http://www.manual-lib.com>

<http://www.404manual.com>

<http://www.luxmanual.com>

<http://aubethermostatmanual.com>

Golf course search by state

<http://golfingnear.com>

Email search by domain

<http://emailbydomain.com>

Auto manuals search

<http://auto.somanuals.com>

TV manuals search

<http://tv.somanuals.com>