



LevelOne

User Manual

WUA-0605

300Mbps *N_Max* Wireless USB Adapter

V1.0

Safety

FCC WARNING

This equipment has been tested and found to comply with the limits for a Class B digital device, pursuant to Part 15 of the FCC Rules. These limits are designed to provide reasonable protection against harmful interference in a residential installation.

This equipment generates, uses and can radiate radio frequency energy and, if not installed and used in accordance with the instructions, may cause harmful interference to radio communications. However, there is no guarantee that interference will not occur in a particular installation. If this equipment does cause harmful interference to radio or television reception, which can be determined by turning the equipment off and on, the user is encouraged to try to correct the interference by one of the following measures:

- Reorient or relocate the receiving antenna.
- Increase the separation between the equipment and receiver.
- Connect the equipment into an outlet on a circuit different from that to which the receiver is connected.
- Consult the dealer or an experienced radio/TV technician for help.

To assure continued compliance, any changes or modifications not expressly approved by the party responsible for compliance could void the user's authority to operate this equipment. (Example - use only shielded interface cables when connecting to computer or peripheral devices).

FCC Radiation Exposure Statement

This equipment complies with FCC RF radiation exposure limits set forth for an uncontrolled environment. This equipment should be installed and operated with a minimum distance of 20 centimeters between the radiator and your body.

This device complies with Part 15 of the FCC Rules. Operation is subject to the following two conditions:

- (1) This device may not cause harmful interference, and
- (2) This device must accept any interference received, including interference that may cause undesired operation.

This transmitter must not be co-located or operating in conjunction with any other antenna or transmitter.

CE Marking Warning

Digital Data Communications, declares that this product (Model-no. WUA-0605) is in compliance with the essential requirements and other relevant provisions of Directive 1999/5/EC.

The CE-Declaration of Conformity can be downloaded at:

<http://www.levelone.eu/support.php>



Table of Contents

Welcome	4
Package Contents.....	4
Wireless USB Adapter Overview.....	5
Wireless USB Adapter Installation	6
Making a Basic Wireless Network Connection.....	11
Introduction to the Wireless LAN Utility	15
Wi-Fi Protected Setup (WPS)	21
Troubleshooting	29

Welcome

Thank you for purchasing the LevelOne WUA-0605 N_Max Wireless USB Adapter.

The WUA-0605 is a 802.11n compliant Wireless Adapter which is designed to be both affordable, and offer fast speeds of up to 300 Mbps.

It is designed for the Home and SOHO user who needs enhanced range and performance, while the WPA2 wireless encryption ensures that the data transmitted is secured.

The detachable antenna also gives users the flexibility to add a higher gain antenna which allows for a customizable boost in performance.

Package Contents

The Wireless USB Adapter package includes the following.

- WUA-0605
- Quick Installation Guide
- CD Manual / Utility

Wireless USB Adapter Overview

Wireless USB Adapter has the USB interface, LED and WPS button below.



Interface

USB Interface: Connect the USB Interface to a USB port on your computer.

LED Description

The LED stays lighted to indicate WLAN link established and active.

WPS Button

WPS Button: Press this button to do WPS with AP.

Wireless USB Adapter Installation

The following instructions will guide you through the process of installing the Wireless USB Adapter.

Windows XP / Vista / 7 Setup

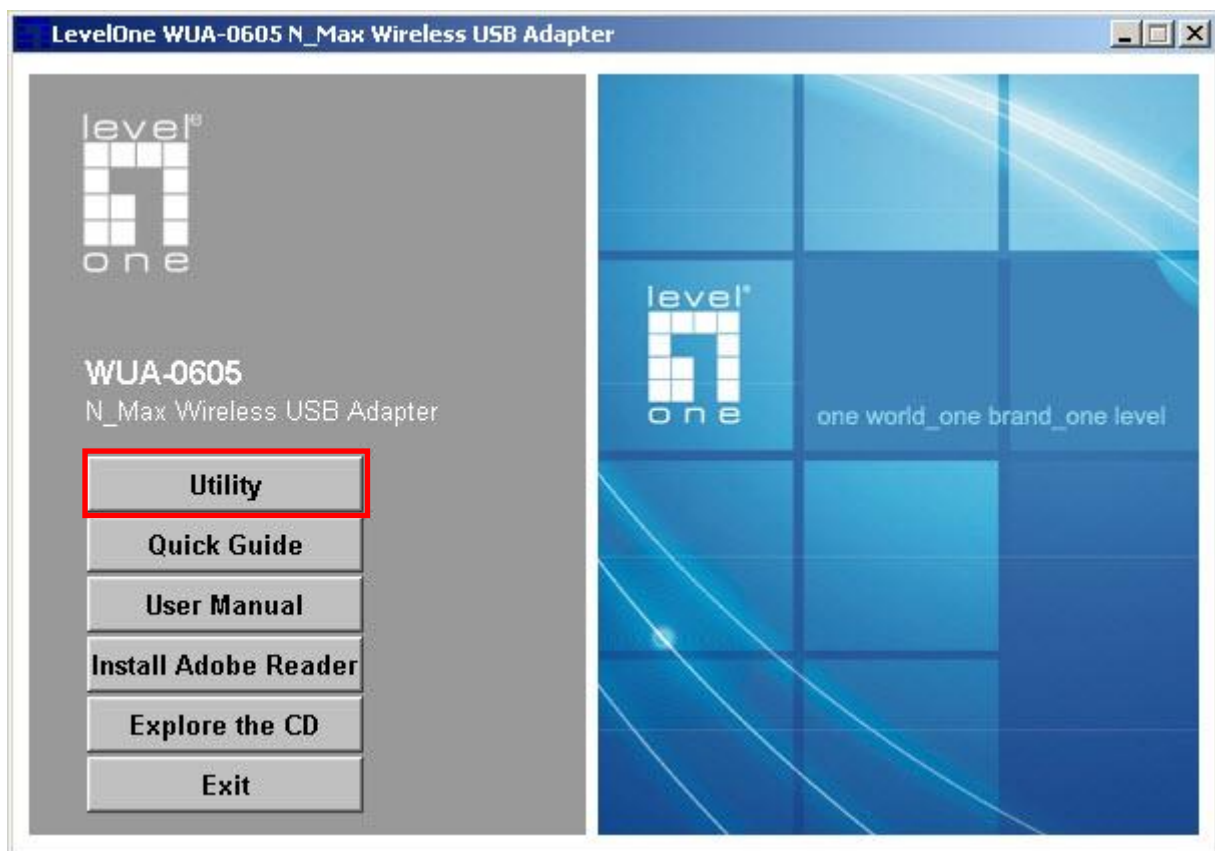
Note: Screen captures shown in this guide are from Windows XP. Unless mentioned, there are no differences in Vista.

1. Insert the CD into the CD-ROM drive on your PC.

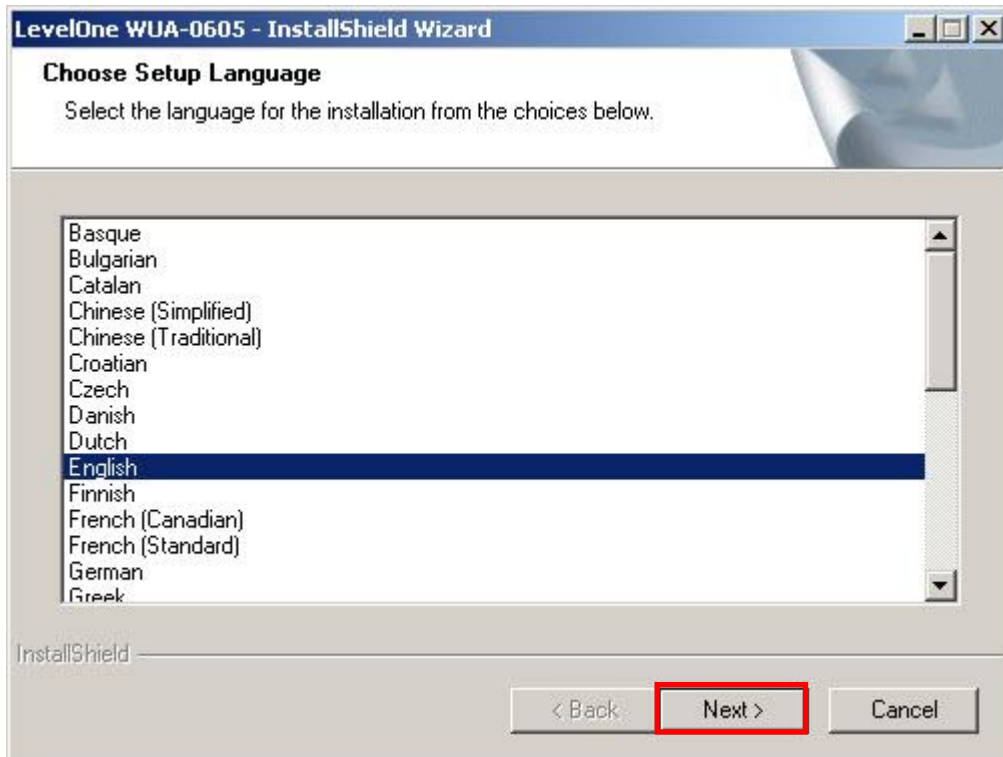
2. The autorun program should start automatically.

If it does not, please run **autorun.exe** under your CD-ROM drive

3. In the autorun screen, click **Utility** to begin the software installation.



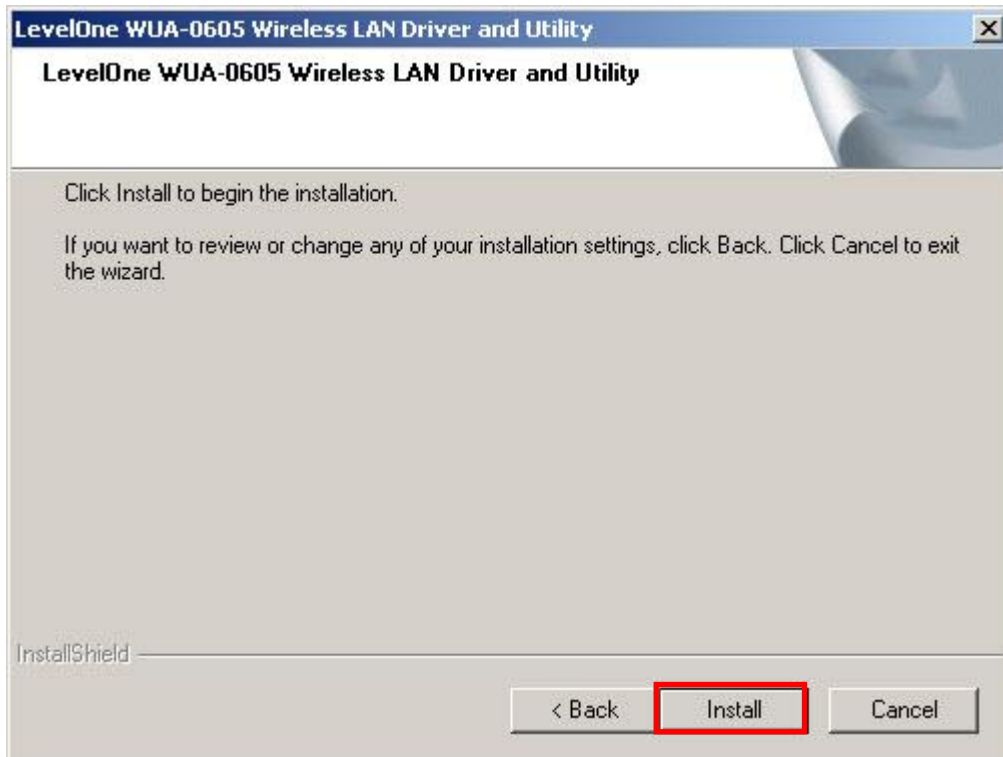
4. Select your desired language, and then click **“Next”** to start the installation.



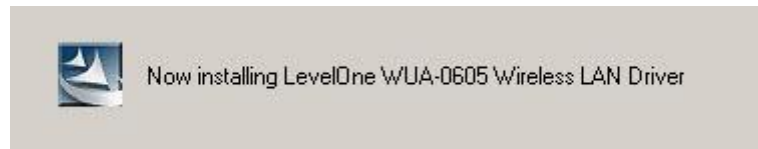
5. Click **“Next”** to continue.



6. Click “Install”

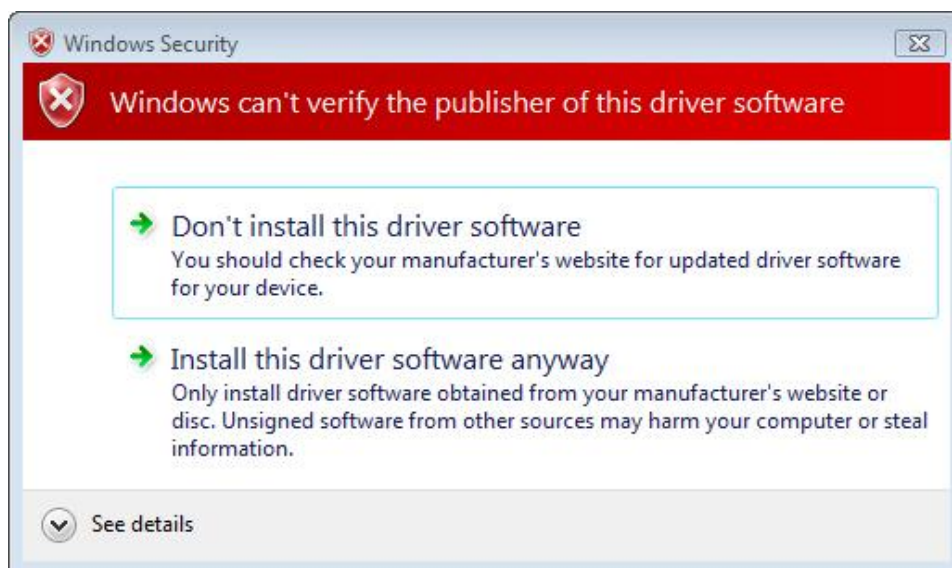


7. The WUA-0605 Driver and Utility is being installed.



In Windows Vista, the follow message may

appear. Please click “**Install this driver software anyway.**”



8. Please click **“Finish”** and restart your computer.



9. After your computer has restarted, the WUA-0605 Utility icon will appear in your taskbar.



Note: The red cross over the icon indicates the USB Adapter is not plugged in.

10. Now insert the Wireless USB Adapter into your computer's USB port.

The **“Found New Hardware Wizard”** will appear.

11. Follow the prompts until you see that the WUA-0605 has been successfully installed.



Windows XP



Windows Vista

12. Device installation is now complete.

You can now use the Utility to connect to your wireless network.

Making a Basic Wireless Network Connection

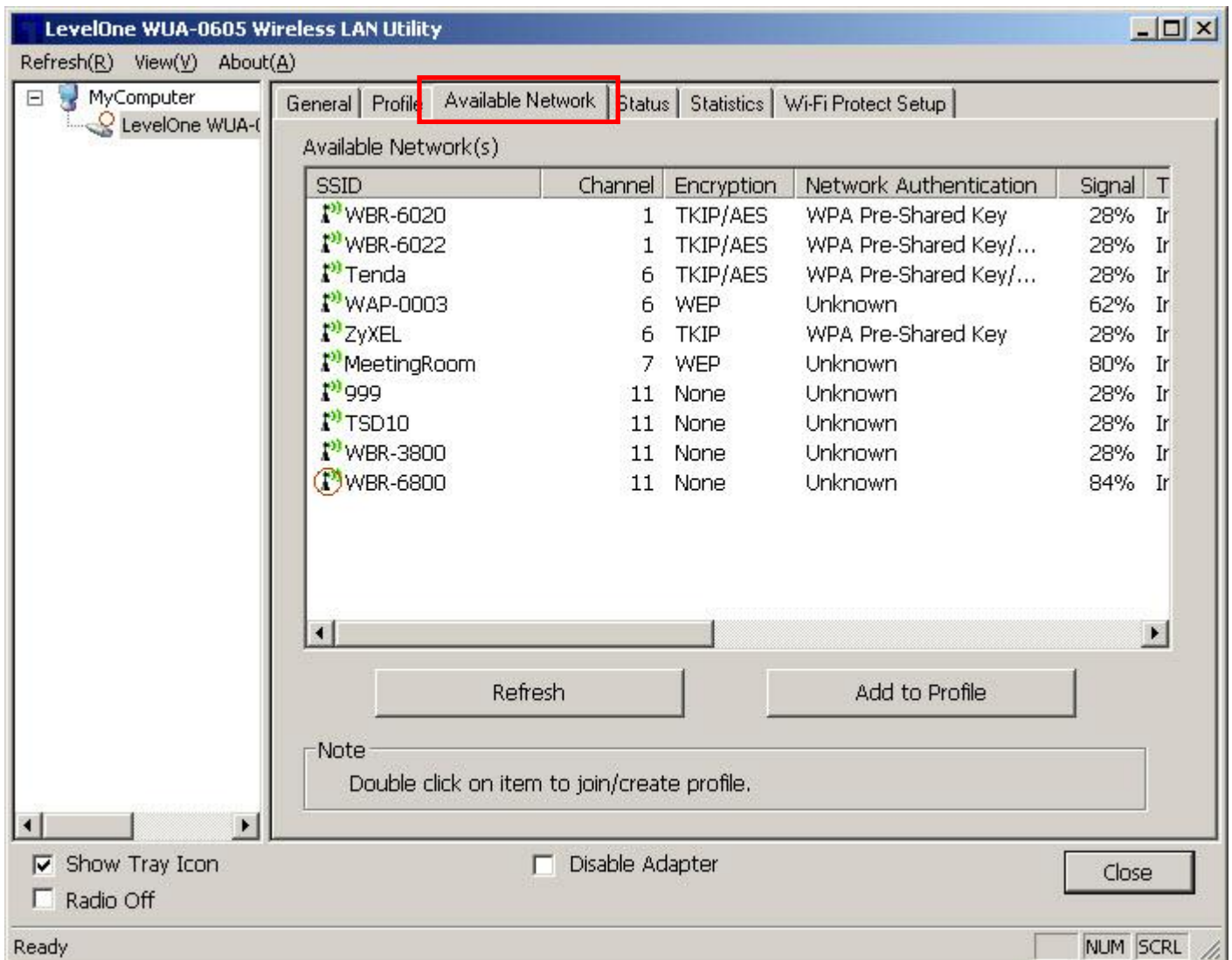
Step 1:

Double click the *LevelOne WUA-0605 Wireless LAN Utility* on your Windows desktop.



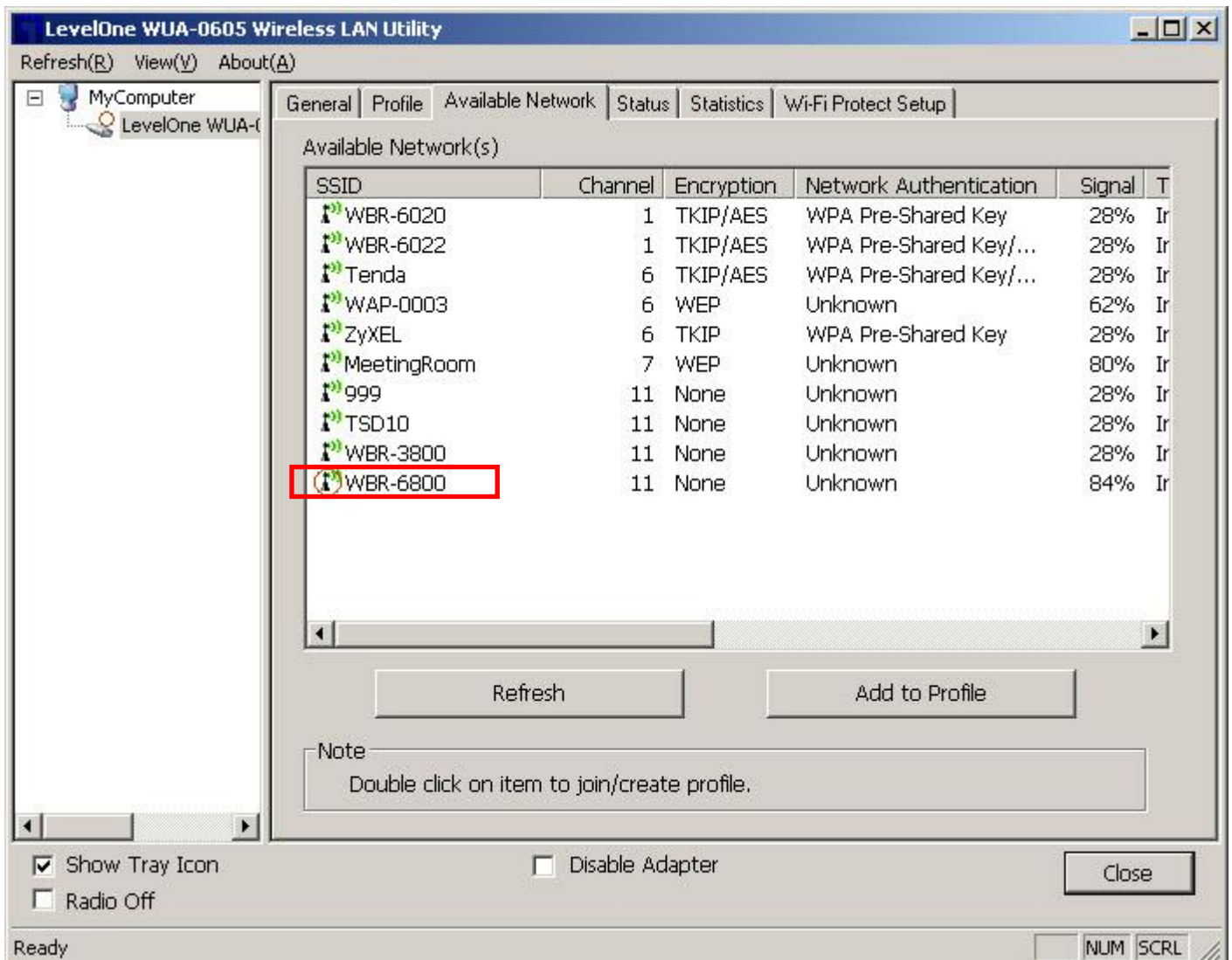
Step 2:

Click the **"Available Network"** button to scan for available access points.



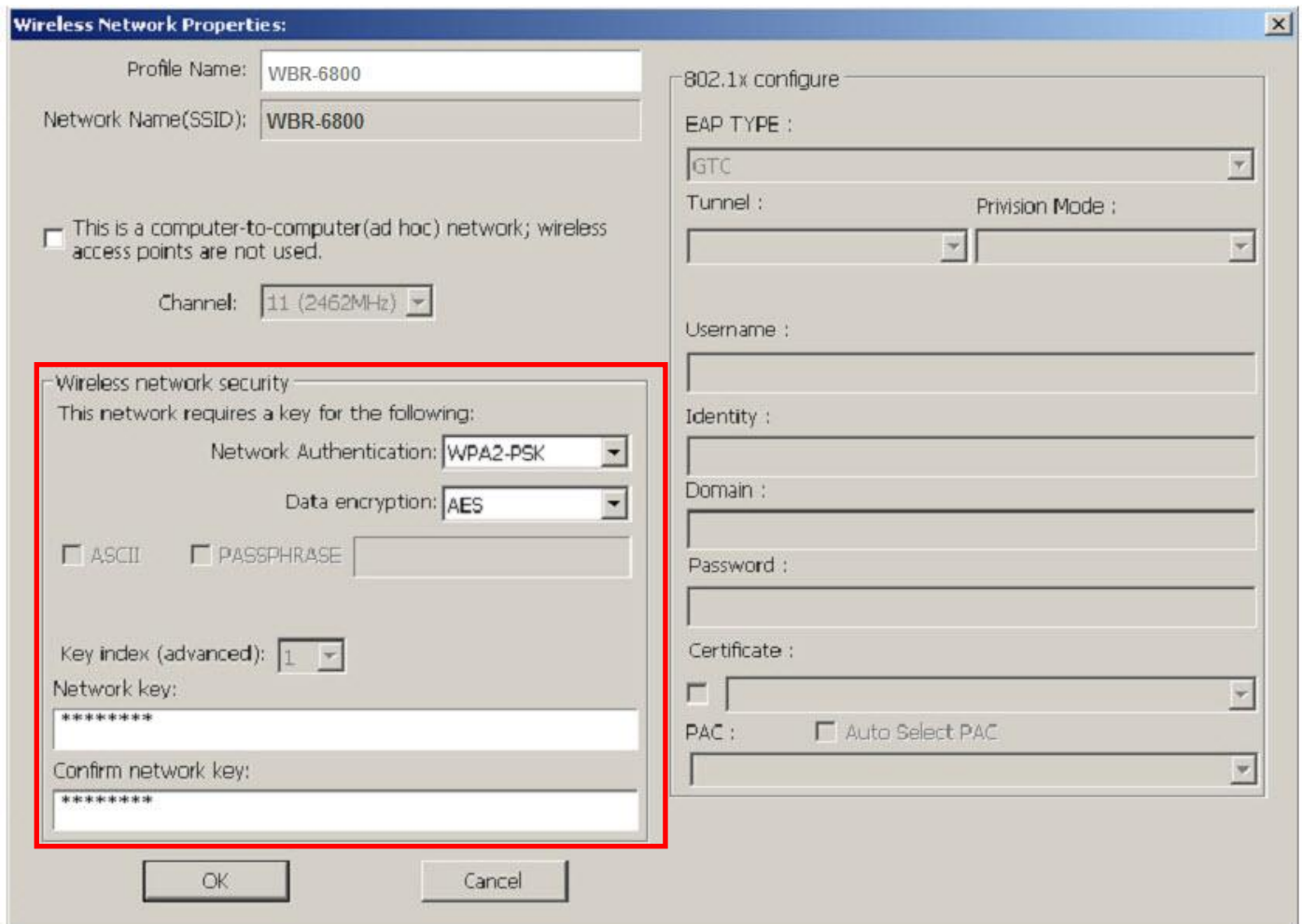
Step 3:

Double click on the SSID of Wireless access point or router that you are going to connect to. In the example, we want to connect to **WBR-6800**.



Step 4:

Enter the wireless security encryption method and key for the access point you are connecting to.



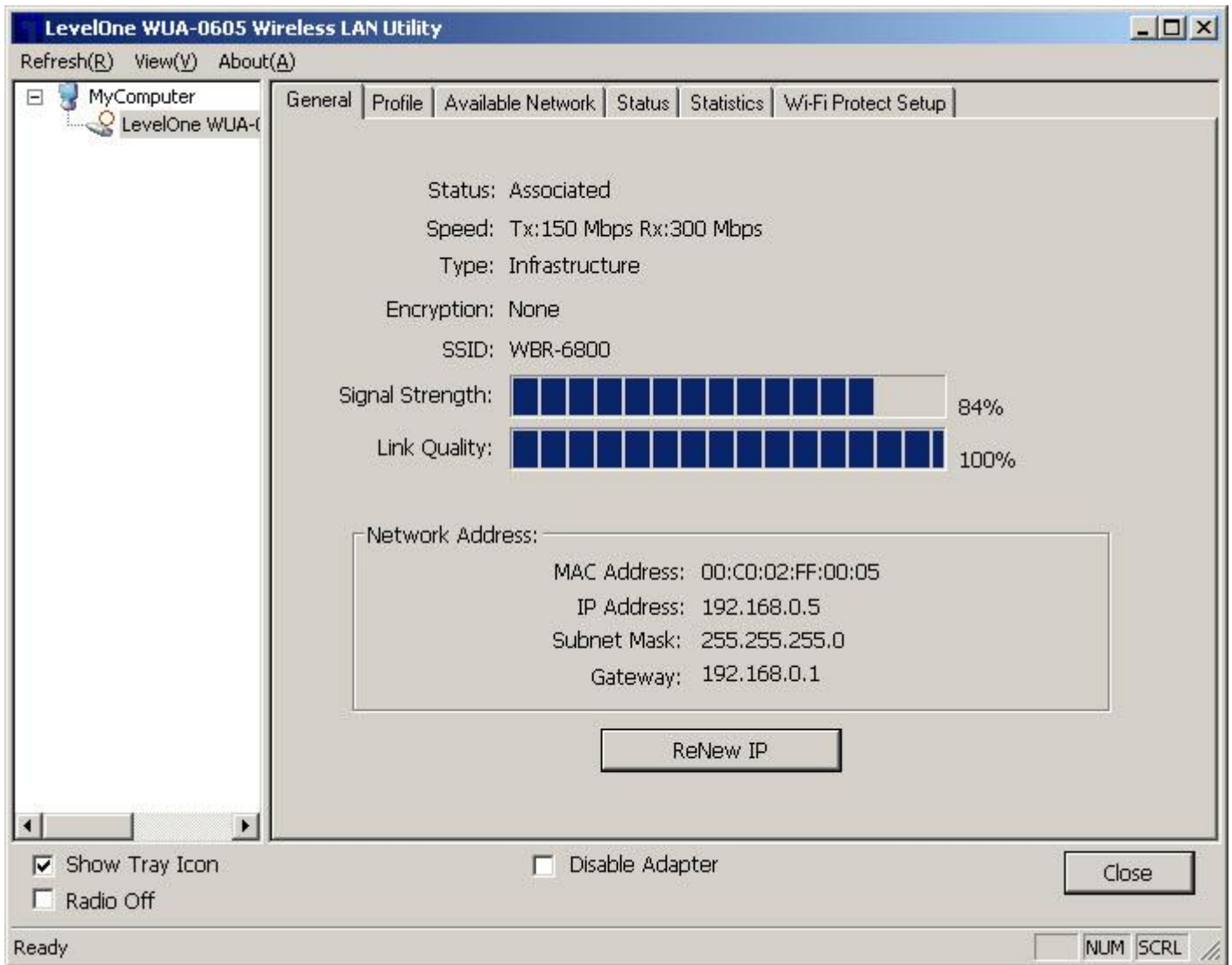
The image shows a screenshot of the Windows 'Wireless Network Properties' dialog box. The 'Profile Name' is 'WBR-6800' and the 'Network Name (SSID)' is also 'WBR-6800'. The 'Channel' is set to '11 (2462MHz)'. A checkbox for 'This is a computer-to-computer (ad hoc) network; wireless access points are not used.' is unchecked. The 'Wireless network security' section, highlighted with a red border, shows 'Network Authentication' set to 'WPA2-PSK' and 'Data encryption' set to 'AES'. There are checkboxes for 'ASCII' and 'PASSPHRASE', both of which are unchecked. The 'Key index (advanced)' is set to '1'. The 'Network key' and 'Confirm network key' fields are filled with asterisks. The '802.1x configure' section on the right shows 'EAP TYPE' set to 'GTC', 'Tunnel' and 'Provision Mode' dropdowns, and fields for 'Username', 'Identity', 'Domain', 'Password', and 'Certificate'. There is also a checkbox for 'Auto Select PAC'.

For maximum security, LevelOne recommends WPA2-PSK (AES).

Note: Use of WEP or WPA (TKIP) will force the wireless connection to connect at legacy 802.11g speeds.

Step 5:

Now you are ready to use the wireless network for Intranet and Internet connection.



Introduction to the Wireless LAN Utility

Note: These instructions uses Windows XP as the presumed operation system. Some functions are not supported in Windows 98SE or Windows ME.

Double click the *LevelOne WUA-0605 Wireless LAN Utility* on your Windows desktop to start the Utility



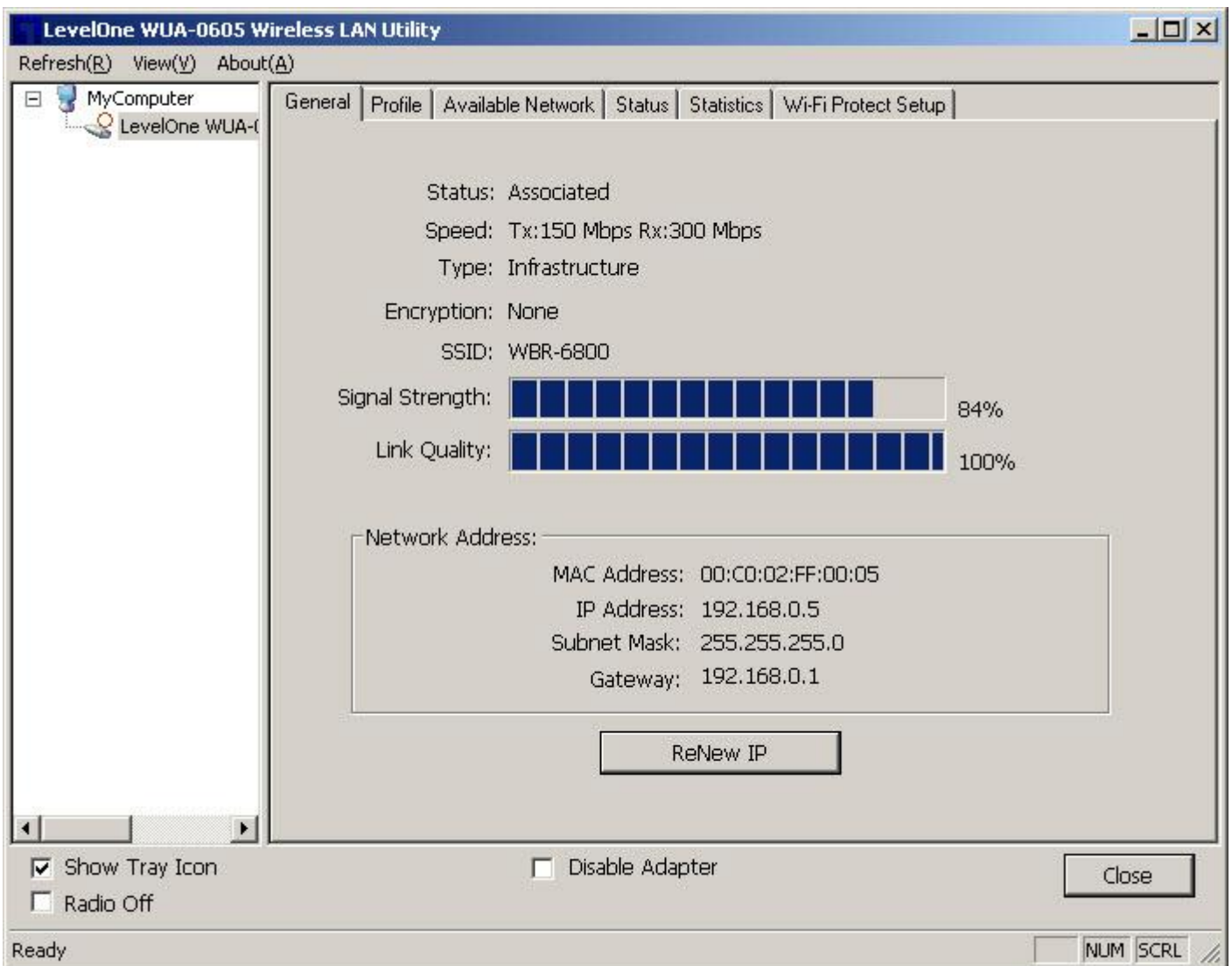
When the utility is opened, you will see the following checkboxes at the bottom.



Checkboxes	Functions
Show Tray Icon	To disable or enable to show the utility icon on your system tray, which is in the notification area at the lower-right corner of the windows desktop.
Radio Off	To disable or enable to prevent this adapter form transmitting or receiving signals.
Disable Adapter	To disable or enable the wireless adapter.

General

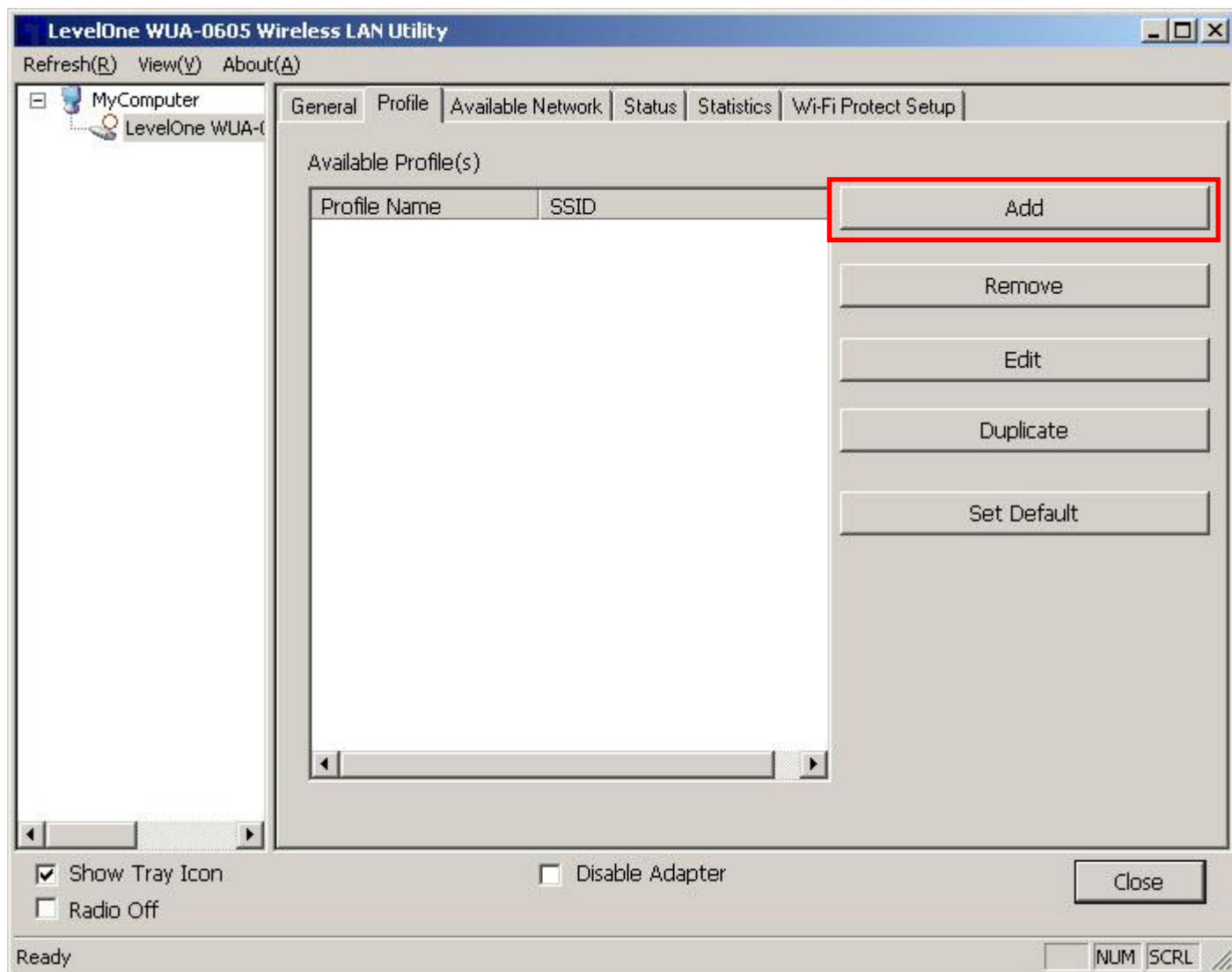
After starting the utility, the general page pops up This **General** tab provides the information of your current wireless network connection.



	Functions
Status	Check if the device associated to target network.
Speed	The current connection speed
Type	Infrastructure or Ad-Hoc mode.
Encryption	The encryption mode for connecting to current network profile.
SSID	The SSID (network name) of the connected wireless network.
Signal Strength	Indicates the signal strength.
Link Quality	Indicates the link quality.
Network Address	Shows the current IP addresses settings.

Profile

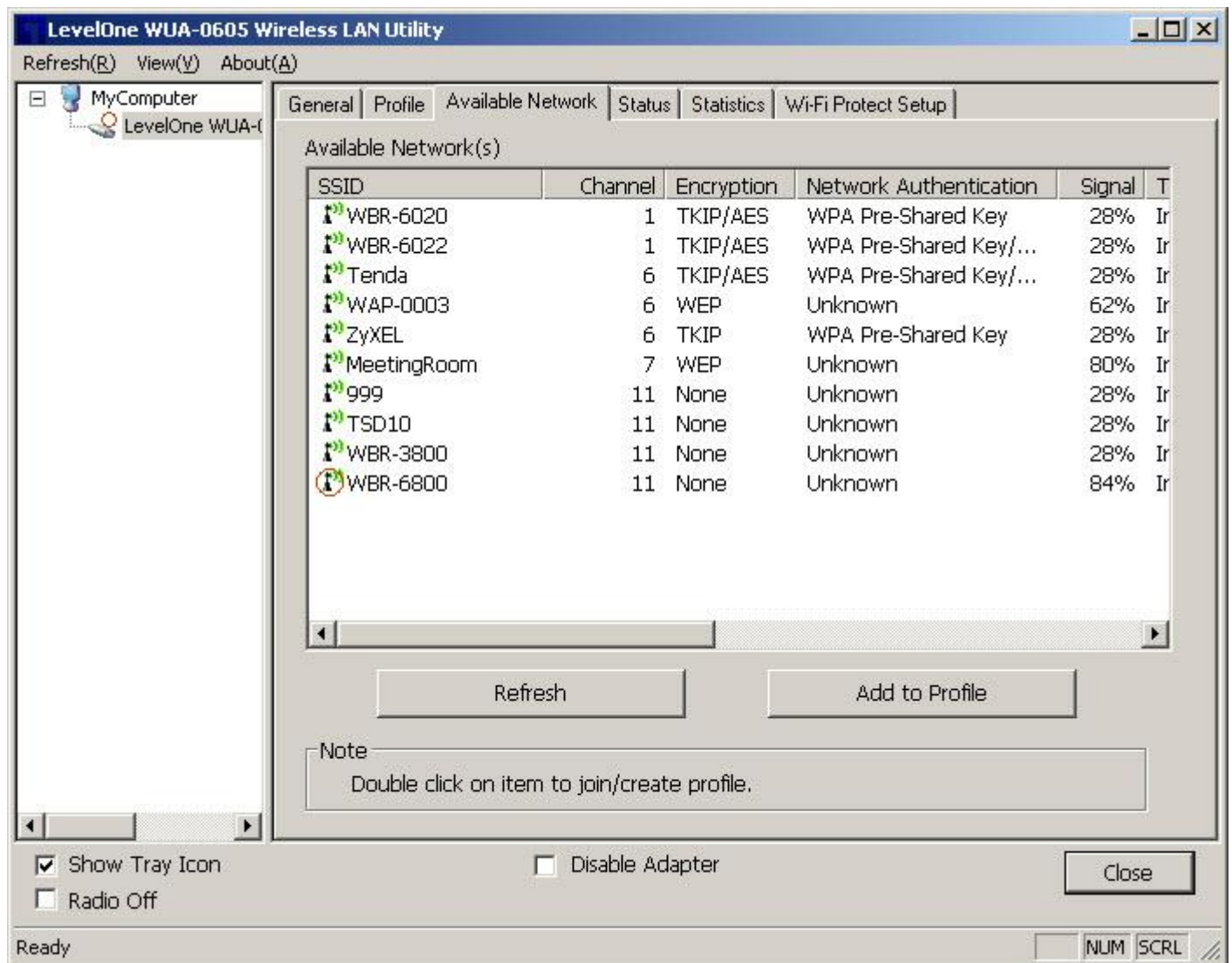
The **Profile** tab lists the preferred connections. You can click the buttons beside to do configure each connection.



	Functions
Add	To add a connection profile.
Remove	To remove a connection profile.
Edit	To modify the configurations for a profile.
Duplicate	To make a copy of a profile.
Set Default	To select a profile as your default wireless connection.

Available Network

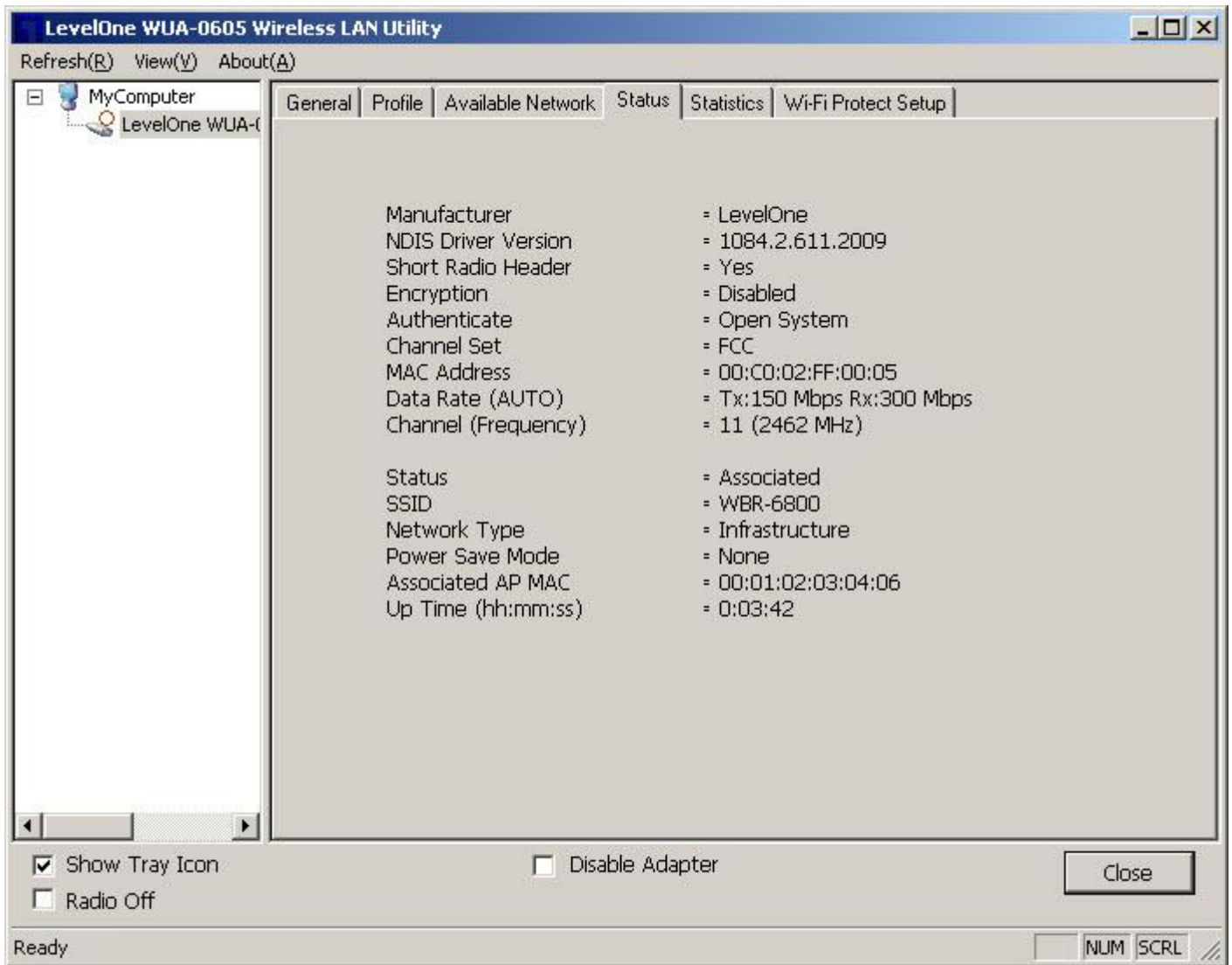
This **Available Network** tab lists the reachable wireless network.



	Functions
Refresh	To rescan available Wireless Networks.
Add to Profile	To add an available Wireless Network to your profile list.

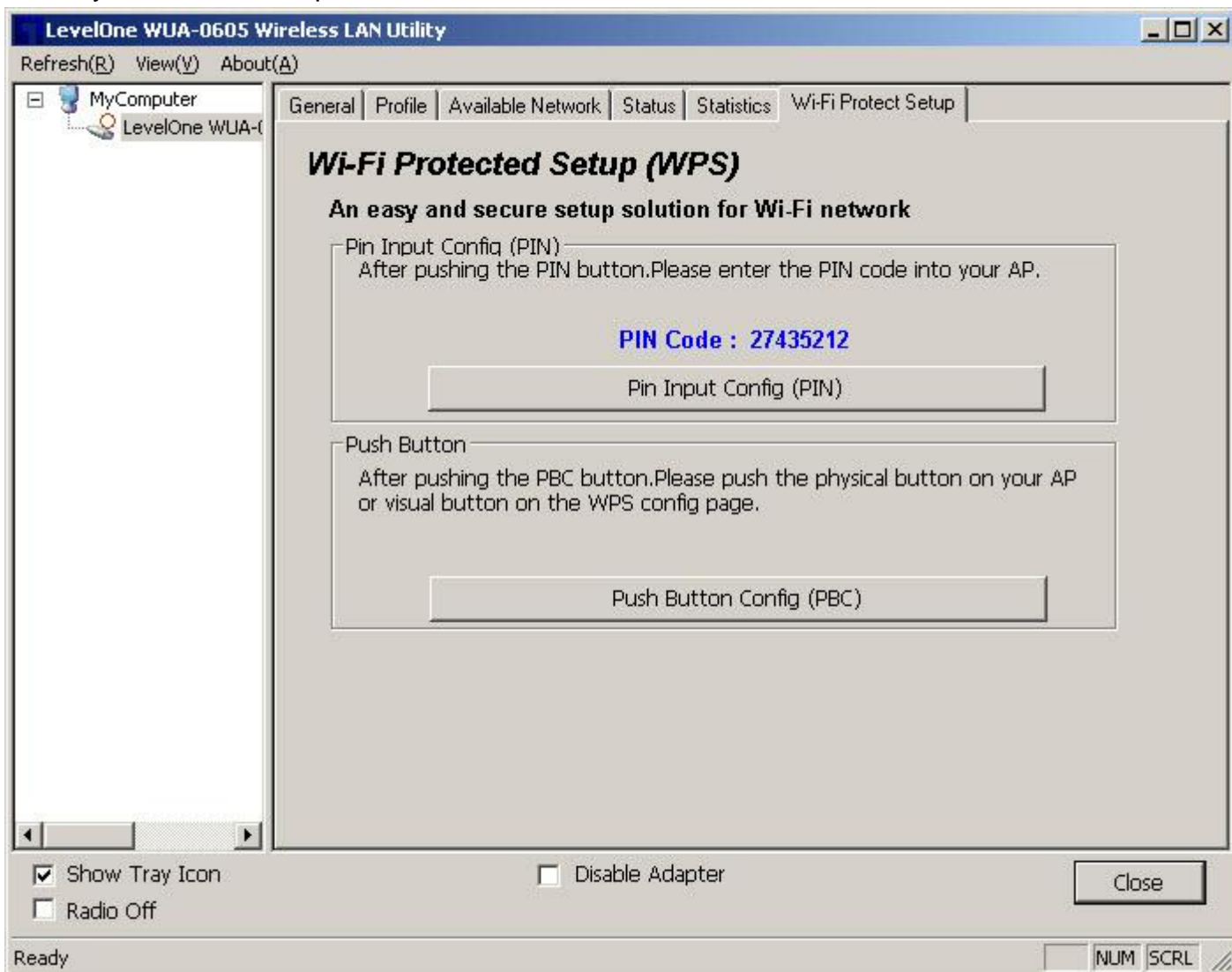
Status

The **Status** tab shows the current connection status.



Wi-Fi Protected Setup (WPS)

An easy and secure setup solution for Wi-Fi networks.



Push Button Config (PBC) Method

If both the Wireless Router / Access Point and the Wireless USB Adapter has a physical button or software button for Push Button Config (PBC), please follow steps below to complete the WPS.

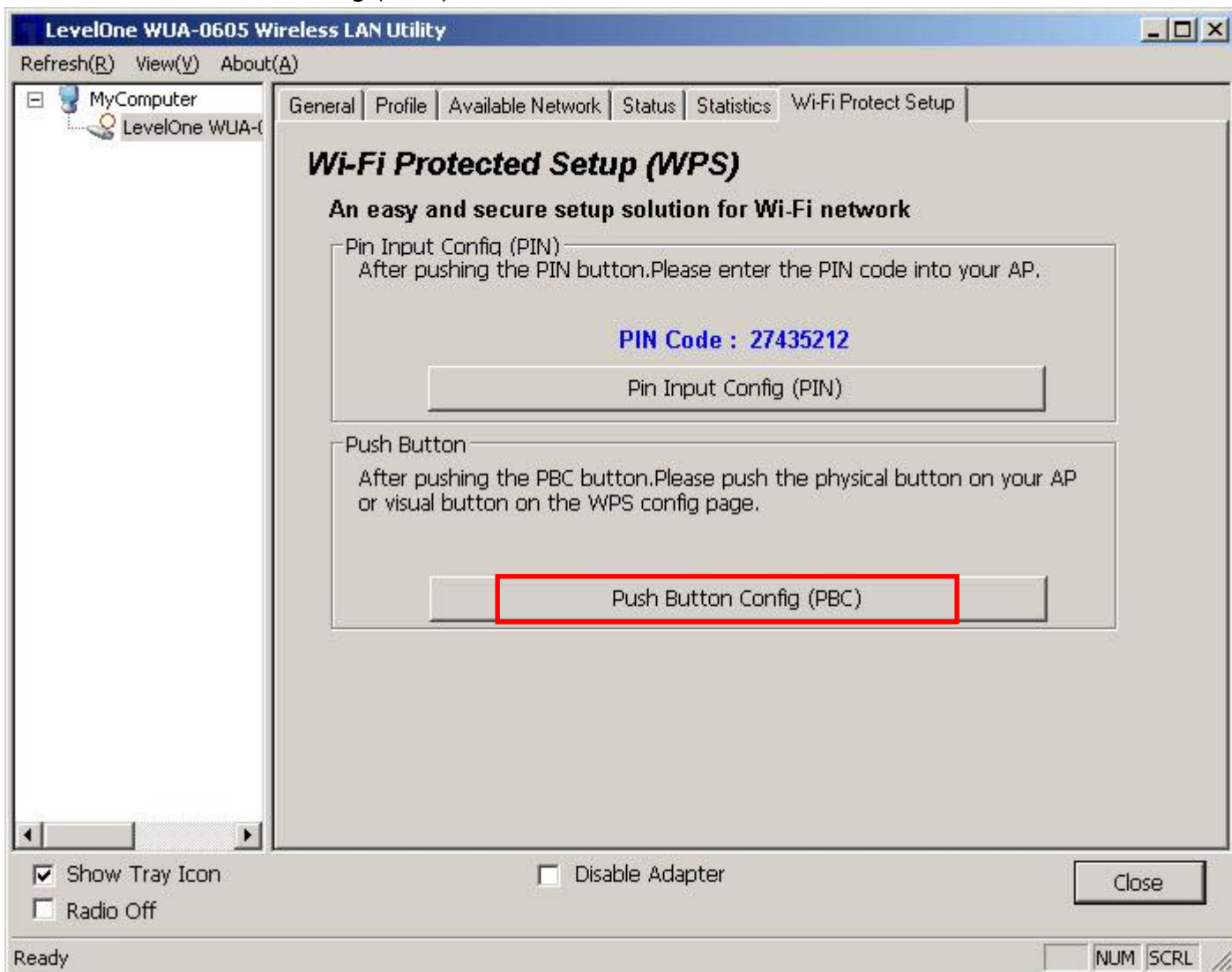
Step 1:

First press the WPS button on your Wireless Router / Access Point.



Step 2:

Click on "Push Button Config (PBC)" button.



You can also push the physical button on the device.



Step 4:

The Utility will now pair the Router/AP and USB Adapter.



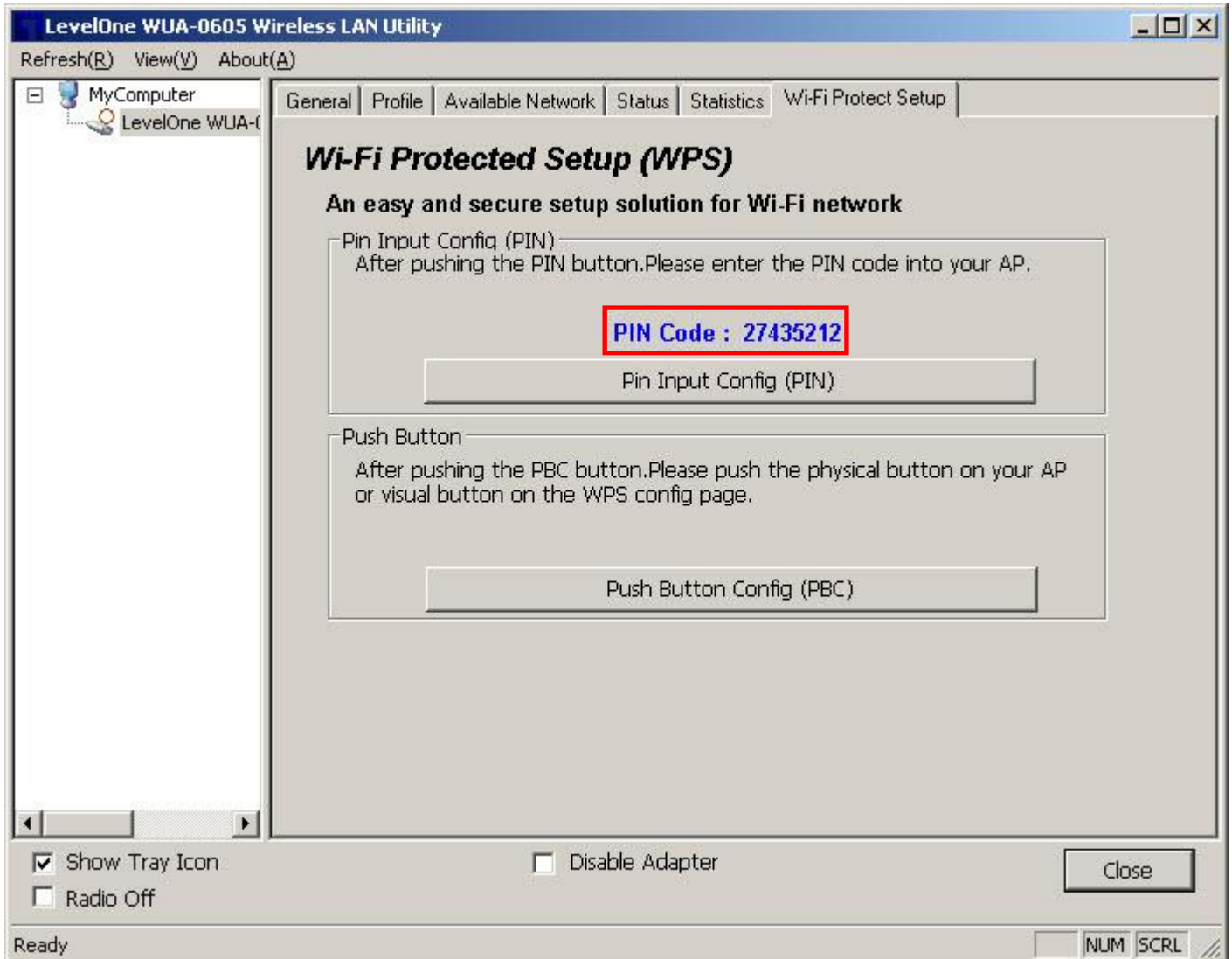
When paired successfully, wireless encryption security will be applied to the connection.

WPS PIN Code Method

You will need to set the same PIN code on both the Wireless Router / Access Point and the USB Adapter.

Step 1:

Check the PIN code assigned by the Wireless LAN Utility



Step 2:

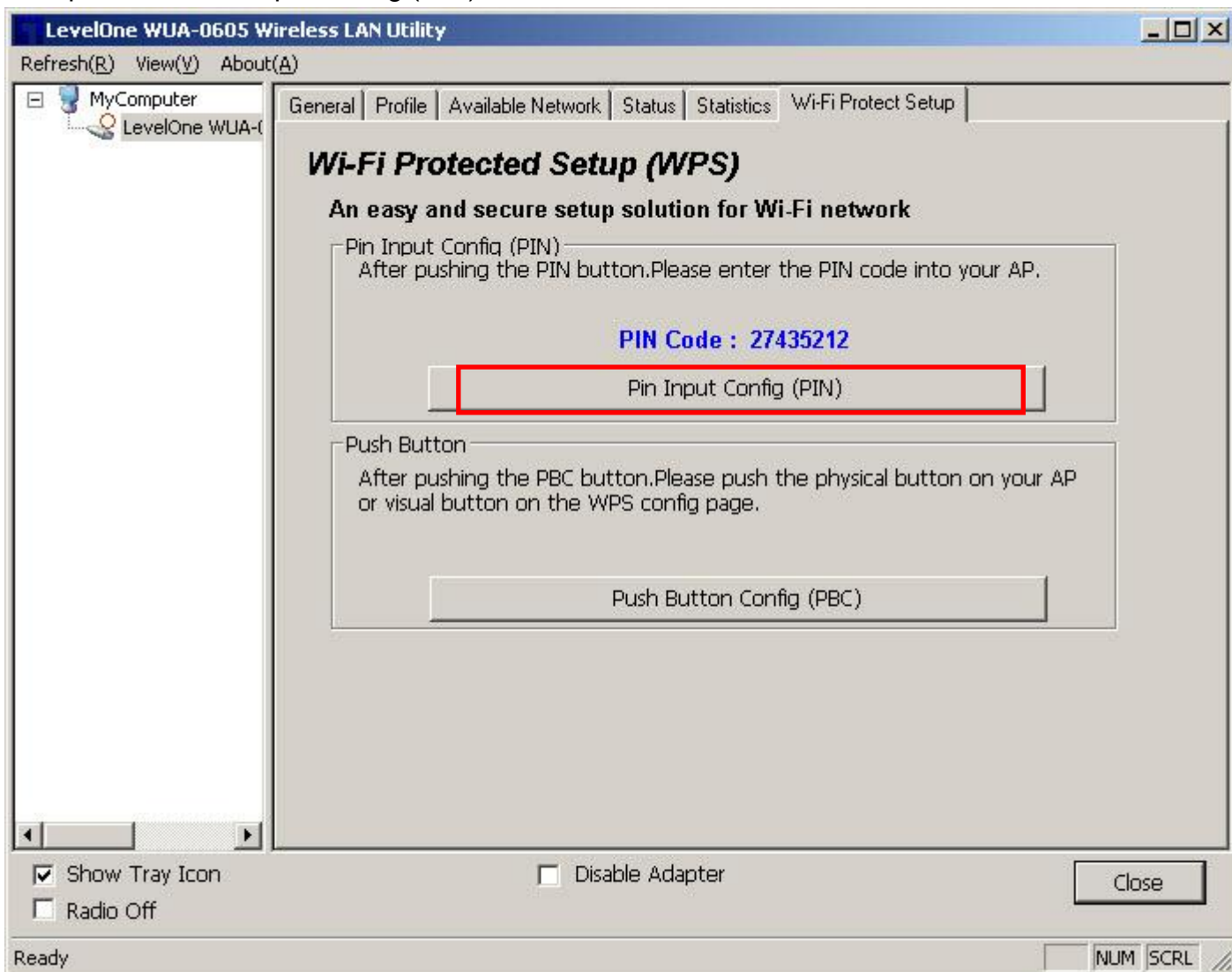
Enter your Router / Access Point's Web Interface and set the WPS settings as **Registrar** and use the PIN code assigned in the Wireless LAN Utility.

Wi-Fi Protected Setup	
Item	Setting
▶ WPS	<input checked="" type="radio"/> Enable <input type="radio"/> Disable
▶ AP PIN	87304749 <input type="button" value="Generate New PIN"/>
▶ Config Mode	<input type="text" value="Registrar"/>
▶ Config Status	CONFIGURED <input type="button" value="Release"/>
▶ Config Method	<input type="text" value="PIN Code"/> <input type="text" value="27435212"/>
▶ WPS status	Not in Use
<input type="button" value="Save"/> <input type="button" value="Trigger"/> <input type="button" value="Cancel"/>	

Screen Capture is from LevelOne Router
Different models/brands will have varying configuration screens.

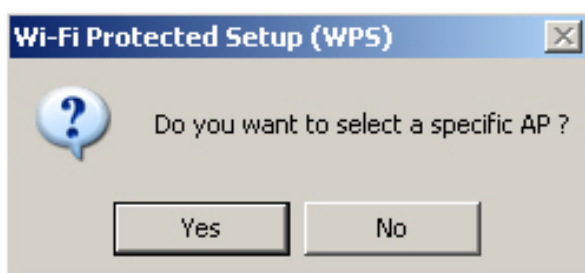
Step 3:

Now press the "Pin Input Config (PIN)" Button.



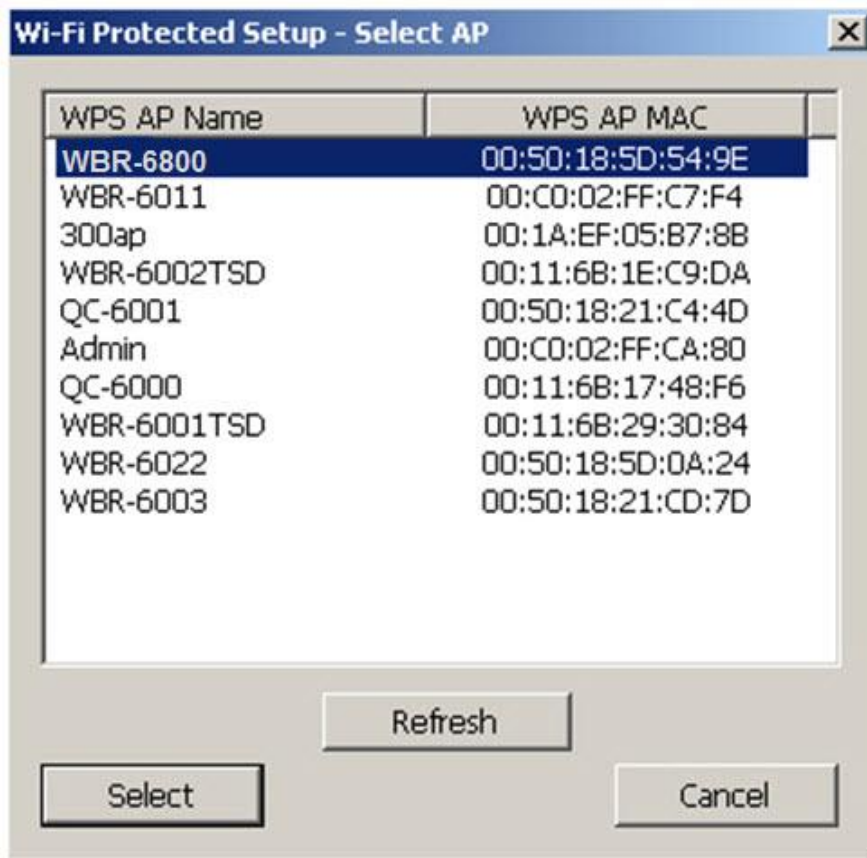
Step 4:

Select "Yes" if you want to select your Router / Access Point.



Step 4:

Select the desired Router / AP Name and then click on " **Select** " button.



Step 6:

The Wireless LAN Utility will start pairing process.

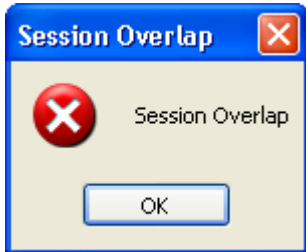


When paired successfully, wireless encryption security will be applied to connection.

Troubleshooting

Session Overlap

If there is more than one AP on the PBC mode, there will be [Session Overlap]. Please use PIN method or wait for a while and push the button again.



TimeOut

If you see the message below while doing WPS!! Please retry again!



Wireless LAN Utility appears twice

The Wireless LAN Utility may appear twice when using Windows Vista. Please reboot your computer to fix this error.



Free Manuals Download Website

<http://myh66.com>

<http://usermanuals.us>

<http://www.somanuals.com>

<http://www.4manuals.cc>

<http://www.manual-lib.com>

<http://www.404manual.com>

<http://www.luxmanual.com>

<http://aubethermostatmanual.com>

Golf course search by state

<http://golfingnear.com>

Email search by domain

<http://emailbydomain.com>

Auto manuals search

<http://auto.somanuals.com>

TV manuals search

<http://tv.somanuals.com>