

LHT888

DVD HOME THEATER SYSTEM

- 1080p Upscaling via HDMI™
- Wireless Rear Speakers (wireless speaker kit included)
- LG Simplink™ Connectivity
- USB Media Plus



1080P UP-CONVERSION

Superior image quality and convenience with 1080p up-conversion via HDMI output.

WIRELESS REAR SPEAKERS

Eliminate speaker cables from the main unit to rear speakers.

USB MEDIA PLUS

Digital music, photos and video with USB Media Plus.

SUPERIOR AUDIO PERFORMANCE

Tuned by renowned audio expert, Mr. Mark Levinson.

LG SIMPLINK

Allows for convenient control of other LG Simplink products using the existing HDMI connection.



TECHNICAL SPECIFICATIONS

AMPLIFIER/SPEAKER

Output Power - Front	100W x 2*
Output Power - Center	100W*
Output Power - Rear	100W x 2*
Output Power - Subwoofer	200W**
Center Speaker Type	Tabletop
Front Speaker Types	"Champagne" Floor-Standing
Rear Speaker Types	"Champagne" Floor-Standing
Subwoofer Speaker Type	Standard

AUDIO/VIDEO PLAYBACK FORMATS

Disc Capacity	1
DVD (NTSC)	•
DVD-R	•
DVD-RW	•
DVD+R	•
DVD+RW	•
CD-R/RW	•
MP3 Audio	•
WMA Audio	•
DivX Video	•
MPEG4 Video	•

GRAPHIC USER INTERFACE

Language	English
----------	---------

AUDIO CAPABILITIES

XTS Pro (eXtreme True Sound Pro)	•
VSM (Virtual Sound Matrix)	•
DTS Decoding	•
Dolby Digital 5.1 Channel Decoding	•
Dolby Prologic II	•
Dolby Digital 2 Channel Down Mix	•
DRC (Dynamic Range Control)	•

USB MEDIA HOST/PLUS PLAYBACK

JPEG	•
MPEG4	•
WMA	•
DivX	•
MP3	•
MP3 VBR	•

DVD PLAYBACK FEATURES

Chapter Skip (Fwd/Rev)	•
Search / Slow / Step Skip for Rew and Fwd	•
1.5X Playback with Audio/Video	•
Resume	•

CD PLAYBACK FEATURES

Programmable Play	•
Repeat Play	•
Number of Programmable Tracks	300

TUNER

Audio Tuner Band	FM/AM
FM Tuner Range (100kHz)	87.50 ~ 108.00 MHz
AM Tuner Range (10kHz)	522 ~ 1620kHz
Radio Tuner Presets	50

FRONT PANEL INPUTS/OUTPUTS

USB (A) Port	•
Mini Stereo Jack Input (3.5mm) for Portable Audio	•

REAR PANEL INPUTS/OUTPUTS

Optical Digital Audio In	•
Audio (L/R) In	•
HDMI Out	•
Component Video Out	•
Composite Video Out	•
FM Antenna Input	•
AM Antenna Input	•
USB (A) Port	•
Speaker Output Type/Number	Push-in/5
Subwoofer Output Type/Number	Push-in/1
LG Wireless Rear Speaker Power Port (7V)	•

SUPPLIED ACCESSORIES

Remote Control Type	Universal
Video Cable (RCA Type)	•
Battery (Size)	AA (2)
User's Guide	•
Warranty Card	•
Customer Registration Card	•
FM Antenna	•
AM Antenna	•

SPECIFICATIONS

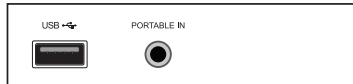
Front Panel Color	Glossy Black
Dimensions (W x H x D)	16.9" x 12.0" x 2.8"
Weight	65.1 lbs (net)
Dimensions w/packaging (W x H x D)	45.7" x 19.2" x 15.0"
Weight in packaging	73.9 lbs
UPC	719192173286
Limited Warranty	1 Year Parts/90 Days Labor

*Rated at 1kHz into 4 ohms, 10% THD
 **Rated at 1kHz into 3 ohms, 10% THD

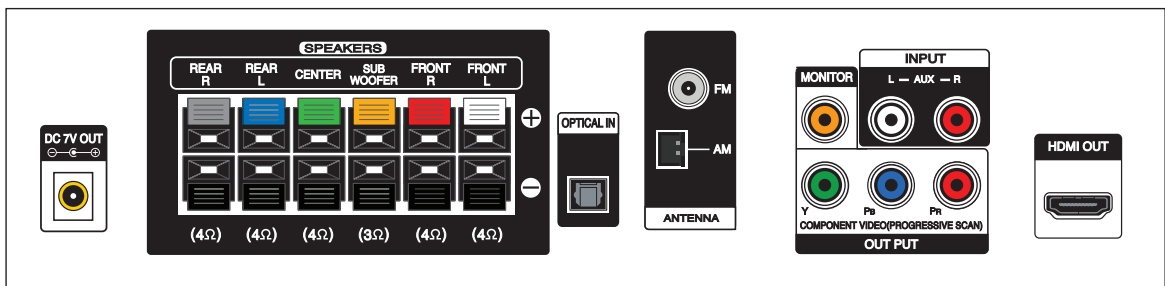
REMOTE/INPUTS/OUTPUTS



FRONT PANEL



BACK PANEL



LG Electronics U.S.A., Inc. • 1000 Sylvan Avenue Englewood Cliffs, NJ 07632
 Customer Service and Technical Support: (800) 243-0000 • LGusa.com

© 2008 LG Electronics U.S.A., Inc., Englewood Cliffs, NJ. All rights reserved. "LG Life's Good" is a registered trademark of LG Corp.
 All other trademarks are the property of their respective owners. Design, features and specifications subject to change without notice. 04/02/08



Free Manuals Download Website

<http://myh66.com>

<http://usermanuals.us>

<http://www.somanuals.com>

<http://www.4manuals.cc>

<http://www.manual-lib.com>

<http://www.404manual.com>

<http://www.luxmanual.com>

<http://aubethermostatmanual.com>

Golf course search by state

<http://golfingnear.com>

Email search by domain

<http://emailbydomain.com>

Auto manuals search

<http://auto.somanuals.com>

TV manuals search

<http://tv.somanuals.com>