

Liebert® IS-WEBRT3 Card™

Quick Start Guide

1 INSTALL

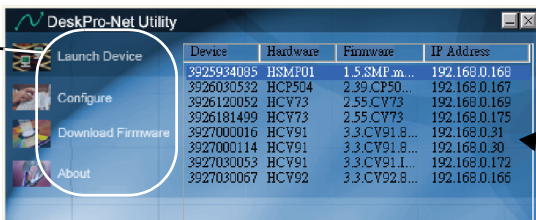
- Locate the Liebert IntelliSlot bay on your Liebert equipment. You might need to remove a plastic cover.
- Insert the Liebert IS-WEBRT3 Card into the bay.
- Secure the card with the supplied screws.
- Connect the card to your network with a CAT5 Ethernet cable.



2 SET LIEBERT IS-WEBRT3 CARD PASSWORD

- Insert the Liebert PSI-RT3 Software CD and install Liebert DeskPro-Net Utility on your computer.
- Start Liebert DeskPro-Net Utility by clicking on **Start>Programs>NetAgent>DeskPro-Net Utility**. The software will automatically find and list available Liebert IS-WEBRT3 cards.
- Double-click on a card in the list to launch it.
- Enter an Account (login name) and Password—**Record the login and password and save them in a safe place.**

Control functions



Liebert IS-WEBRT3 cards found

3 CONFIGURE LIEBERT IS-WEBRT3 CARD

- Highlight the card in the list and click **Configure** to change the card's IP address, subnet mask, and gateway settings (see your network administrator for the settings).

The Liebert IS-WEBRT3 card can be used with DHCP or BOOTP, where the system assigns an address, but this makes troubleshooting difficult.

- Liebert MultiLink™ will communicate with the Liebert IS-WEBRT3 card. The software can be configured to shut down a computer system in response to utility power failure and the UPS' battery backup time.

User Manual

This Quick Start Guide is designed to give you the information you need to install and configure the Liebert IS-WEBRT3 Card. A full user manual, SL-52665, is available online at www.liebert.com. Liebert recommends that new users consult the user manual.

Web Support

The IS-WEBRT3 Card delivers Web management and control to Liebert equipment. All users on your network will be able to view status information. Control and configuration capabilities are protected by a username and password combination.

You can change the password from the Web or from DeskPro-Net Utility.

Liebert MultiLink™ Support

Liebert MultiLink software, can be downloaded at multilink.liebert.com

SNMP Support

The Liebert IS-WEBRT3 Card enables SNMP management of Liebert PSI equipment. To integrate the card into your SNMP implementation, you will need to compile the UPS MIB on your network management station (NMS). The UPS MIB is included in this package on CD-ROM and supports both Windows and Unix file formats.

Liebert Nform Support

Utilizing the SNMP and Web technologies built into each of the Intellislot Web cards, Liebert Nform will centrally manage alarm notifications to provide you with an easy interface to access critical system information.

A downloadable edition is available online at nform.liebert.com

Technical Support/Service

Web Site

www.liebert.com

Monitoring

800-222-5877

monitoring@emersonnetworkpower.com

Outside the US: 614-841-6755

Locations

United States

1050 Dearborn Drive

P.O. Box 29186

Columbus, OH 43229

Locations

Europe

Via Leonardo Da Vinci 8
Zona Industriale Tognana
35028 Piove Di Sacco (PD) Italy
+39 049 9719 111
Fax: +39 049 5841 257

Asia

7/F, Dah Sing Financial Centre
108 Gloucester Road, Wanchai
Hong Kong
852 25722201
Fax: 852 28029250

SL-52660_REV01_07-08



Free Manuals Download Website

<http://myh66.com>

<http://usermanuals.us>

<http://www.somanuals.com>

<http://www.4manuals.cc>

<http://www.manual-lib.com>

<http://www.404manual.com>

<http://www.luxmanual.com>

<http://aubethermostatmanual.com>

Golf course search by state

<http://golfingnear.com>

Email search by domain

<http://emailbydomain.com>

Auto manuals search

<http://auto.somanuals.com>

TV manuals search

<http://tv.somanuals.com>