

LINDY®

CONNECTION PERFECTION

Multi-Card Reader Pro

User Manual

English



LINDY No. 42982

CE

FC

For Home and Office Use
Tested to Comply with FCC
Standards

www.lindy.com

© LINDY ELECTRONICS LIMITED & LINDY-ELEKTRONIK GMBH - FIRST EDITION (February 2008)

Introduction

Thank you for purchasing the LINDY Multi-Card Reader Pro! This versatile card reader is compatible with the latest card types, including SD High Capacity (SDHC), and with the smallest card types, such as Micro SD and Memory Stick M2, without using any adapter. As well as reading standard memory cards, the LINDY Multi-Card Reader Pro can also be used to read, edit and back up contacts and messages from your mobile phones SIM Card.

Features

- Supports multiple card formats
- 6 different card slots
- USB 2.0 transfer rate up to 480Mbps; backwards compatible with USB 1.1
- Integrated rotating USB connector
- LED to indicate card access
- Bus powered – no external power supply required
- Includes SIM card editor software
- Memory Card Reader compatible with Windows ME/2000/XP/Vista and Mac OS 9.0 or higher
- SIM Card Reader compatible with Windows 2000/XP/Vista
- Dimensions: 68 x 41 x 14mm (WxDxH)

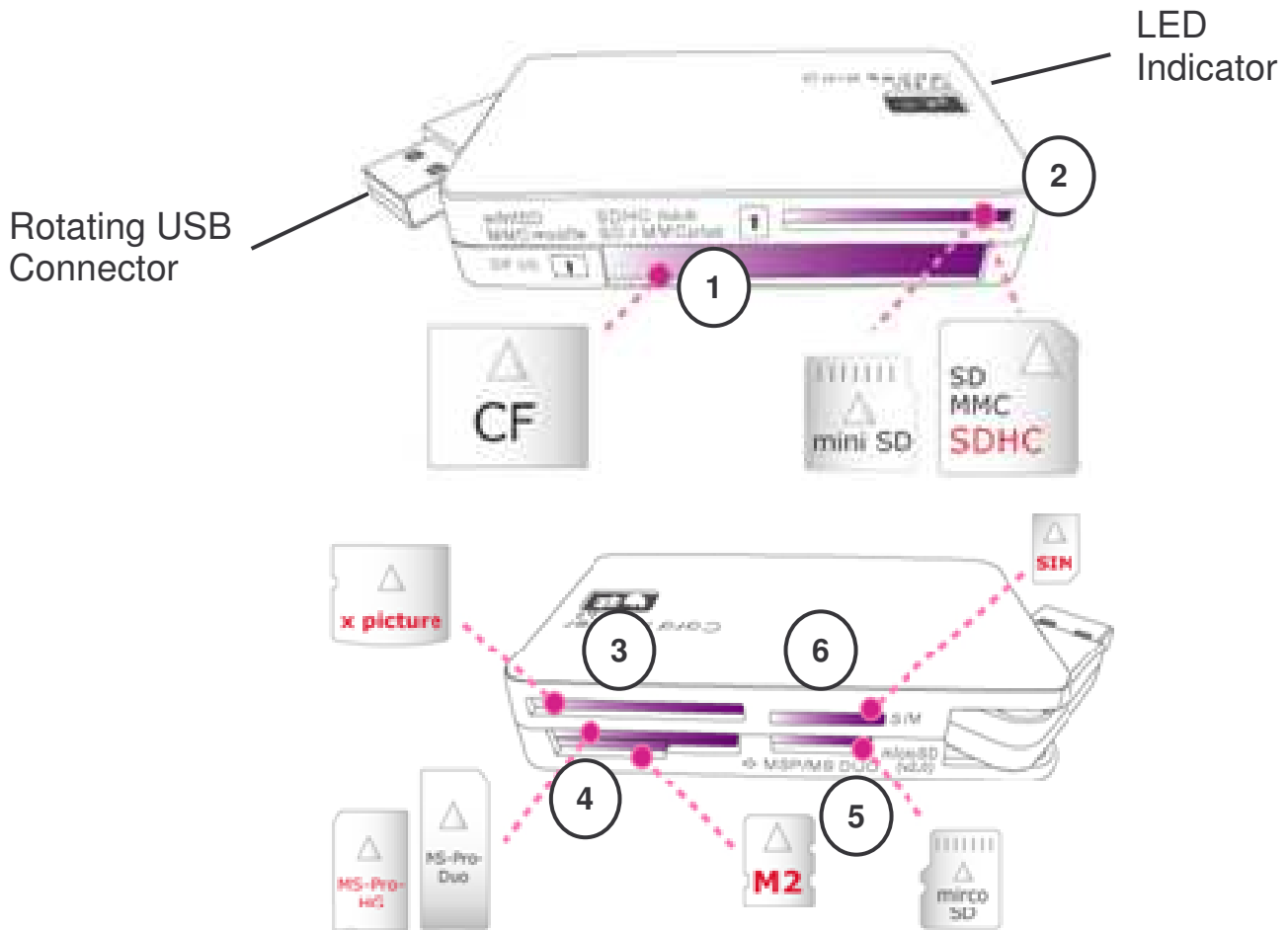
Package Contents

- Multi-Card Reader Pro
- USB 2.0 Extension Cable (approx 1m)
- SIM Card Editor software
- This User Guide

System Requirements

- Pentium II 300MHz (or higher) with Windows ME/2000/XP/Vista or Mac computer with OS 9.0 or higher
- Available USB 2.0 or USB 1.1 port
- CD ROM for driver installation (required for SIM Card Editor only)

Overview



Slot 1: CFI/CFII/CF 3.0/CF 4.0/Extreme III CF/Extreme CF/Ultra II CF/HS CF/ XS-XS CF/CF Elite Pro/CF Pro/CF Pro II/IBM MD/HITACHI MD/Magicstor MD

Slot 2: SD/Mini SD/HS Mini SD/Extreme SD/Extreme III SD/Ultra SD/Ultra II SD/Ultra II SD Plus/SD-Ultra-X/Ultra Speed SD/SD Pro/SDHC/SD Elite Pro/HS SD/MMC/MMC 4.0/MMC 4.2/HS MMC/HS RS MMC/RS MMC/RS MMC 4.0/MMC Mobile/MMC Plus

Slot 3: xD

Slot 4: MS/MS Pro/MS Duo/MS Pro Duo/MS MG Pro/MS MG/MS MG Duo/MS MG Pro Duo/Extreme MS Pro/MS Select/ Extreme III MS Pro/Ultra II MS Pro/HS MS MG Pro/HS MS MG Pro Duo/HS MS Pro/HS MS Pro Duo/MS ROM – M2

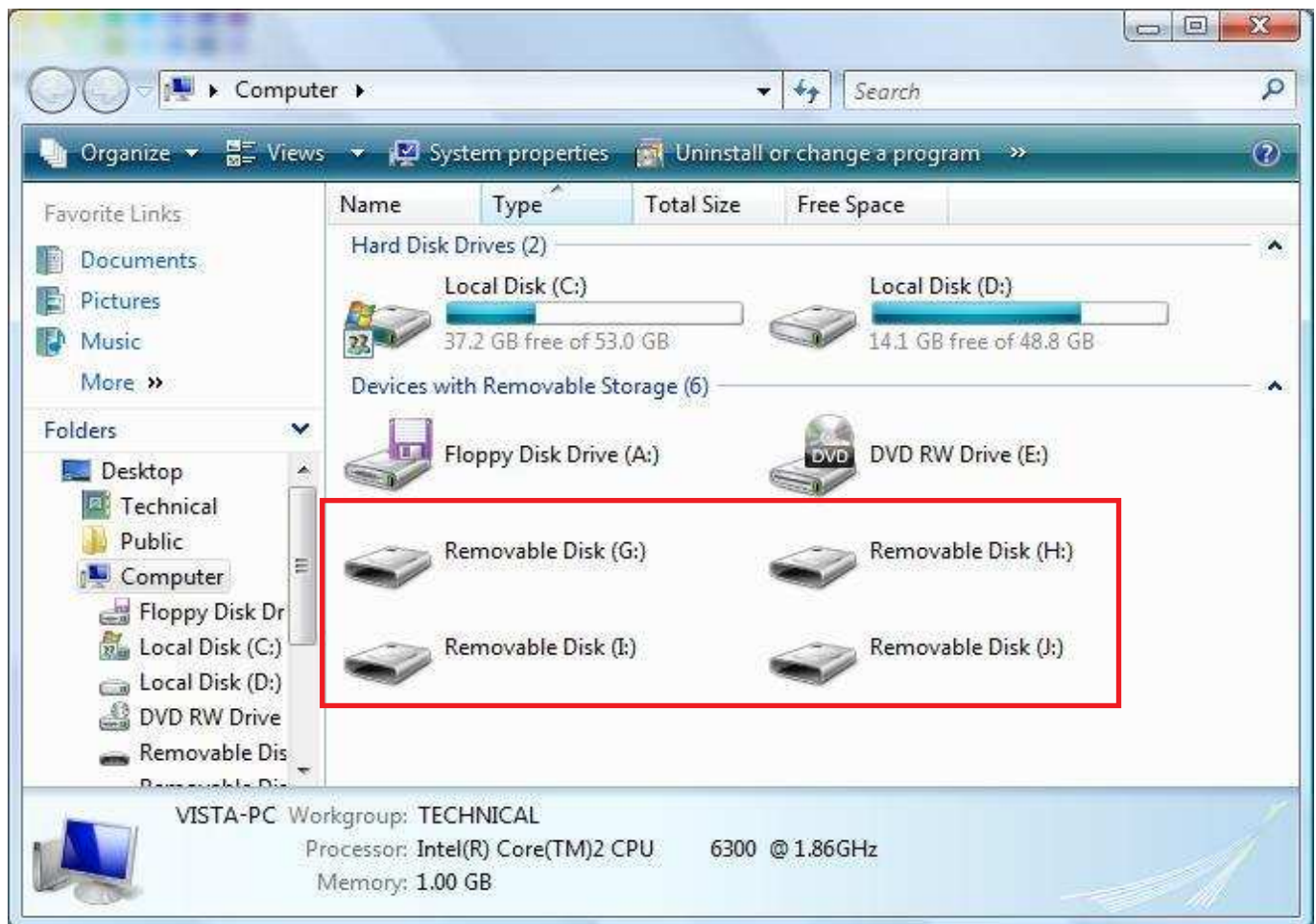
Slot 5: Micro SD, T-Flash

Slot 6: SIM Card

Memory Card Reader Installation & Use

Installation is simply a matter of connecting the LINDY Multi-Card Reader Pro to an available USB port, either using the rotating USB connector directly, or in conjunction with the supplied USB extension cable. Your computers OS will automatically detect the Card Reader and provide its own driver.

Once installed, each slot will be shown as separate **Removable Disk** drives:



SIM Card Editor Installation & Use

Before installing the SIM Card Editor software please complete the Memory Card Installation.

1. Insert the SIM Card Editor CD in to your PC's CD-ROM Drive
2. The CD Will auto-run. Click **SIM Card Editor** to begin installation

3. Choose your installation language from the dropdown and click **OK**
4. Follow the on screen instructions
5. When you come to the “end user license agreement (EULA)” page, read the agreement and press **I Agree** to accept the terms of the agreement and continue
6. Choose the location for the installation and click **Install**
7. When the installation is completed, click **Finish** and the SIM Card editor software will run.
8. For instructions on using the SIM Card Editor software, please refer to the user manual on the supplied CD.

CE Statement

This device complies with the European Regulations for Electromagnetic Compatibility (EMC) of the European Union and it is equipped with the CE mark. This unit has to be used with high quality shielded connection cables. Only if such high quality shielded cables are used can you be sure that the EMC compatibility is not adversely influenced.

FCC Statement

Shielded cables must be used with this equipment to maintain compliance with radio frequency energy emission regulations and ensure a suitably high level of immunity to electromagnetic disturbances.

FCC Warning

This equipment has been tested and found to comply with the limits for a Class B Digital device, pursuant to part 15 of the FCC Rules. These limits are designed to provide reasonable protection against harmful interference in a residential installation. This equipment generates, uses, and can radiate radio frequency energy and, if not installed and used in accordance with the instructions, may cause harmful interference to radio communications. However, there is no guarantee that interference will not occur in a particular installation. If this equipment does cause harmful interference to radio or television reception, which can be determined by turning the equipment off and on, the user is encouraged to try to correct the interference by one or more of the following measures:

- Reorient or relocate the receiving antenna
- Increase the separation between the equipment and receiver
- Connect the equipment into an outlet on a circuit different from that to which the receiver is connected
- Consult the dealer or an experienced technician for help

You are cautioned that changes or modifications not expressly approved by the party responsible for compliance could void your authority to operate the equipment.



**WEEE (Waste of Electrical and Electronic Equipment),
Recycling of Electronic Products**

United Kingdom

In 2006 the European Union introduced regulations (WEEE) for the collection and recycling of all waste electrical and electronic equipment. It is no longer allowable to simply throw away electrical and electronic equipment. Instead, these products must enter the recycling process.

Each individual EU member state has implemented the WEEE regulations into national law in slightly different ways. Please follow your national law when you want to dispose of any electrical or electronic products.

More details can be obtained from your national WEEE recycling agency.

Germany / Deutschland

Die Europäische Union hat mit der WEEE Richtlinie umfassende Regelungen für die Verschrottung und das Recycling von Elektro- und Elektronikprodukten geschaffen. Diese wurden von der Bundesregierung im Elektro- und Elektronikgerätegesetz – ElektroG in deutsches Recht umgesetzt.

Dieses Gesetz verbietet vom 24. März 2006 an das Entsorgen von entsprechenden, auch alten, Elektro- und Elektronikgeräten über die Hausmülltonne! Diese Geräte müssen den lokalen Sammelsystemen bzw. örtlichen Sammelstellen zugeführt werden! Dort werden sie kostenlos entgegen genommen. Die Kosten für den weiteren Recyclingprozess übernimmt die Gesamtheit der Gerätehersteller.

France

En 2006, l'union Européenne a introduit la nouvelle réglementation (WEEE) pour le recyclage de tout équipement électrique et électronique.

Chaque Etat membre de l' Union Européenne a mis en application la nouvelle réglementation WEEE de manières légèrement différentes. Veuillez suivre le décret d'application correspondant à l'élimination des déchets électriques ou électroniques de votre pays.

Italy

Nel 2006 l'unione europea ha introdotto regolamentazioni (WEEE) per la raccolta e il riciclo di apparecchi elettrici ed elettronici. Non è più consentito semplicemente gettare queste apparecchiature, devono essere riciclate.

Ogni stato membro dell' EU ha tramutato le direttive WEEE in leggi statali in varie misure. Fare riferimento alle leggi del proprio Stato quando si dispone di un apparecchio elettrico o elettronico.

Per ulteriori dettagli fare riferimento alla direttiva WEEE sul riciclaggio del proprio Stato.

LINDY No. 42982

February 2008

www.lindy.com



Free Manuals Download Website

<http://myh66.com>

<http://usermanuals.us>

<http://www.somanuals.com>

<http://www.4manuals.cc>

<http://www.manual-lib.com>

<http://www.404manual.com>

<http://www.luxmanual.com>

<http://aubethermostatmanual.com>

Golf course search by state

<http://golfingnear.com>

Email search by domain

<http://emailbydomain.com>

Auto manuals search

<http://auto.somanuals.com>

TV manuals search

<http://tv.somanuals.com>