

 **LINDY**®
COMPUTER CONNECTION TECHNOLOGY

**USB 2.0
4+1 Port PCI Card**

User Manual

English



LINDY No. 51084



www.lindy.com

For Home and Office Use
Tested to Comply with FCC Standards



Download from Www.Somanuals.com. All Manuals Search And Download.

Introduction

Thank you for purchasing this LINDY USB 2.0 PCI Card. This 32-Bit PCI Card allows you to connect up to 4 USB 2.0 devices to your computer.

Packing List

- USB 2.0 4+1 Port PCI Card
- Driver CD
- This manual

Features

- 5 USB 2.0 ports (4 are external and 1 is a shared internal port)
- 32-Bit PCI
- Auto detects connection and speed of devices
- Supports High Speed Data Transfer Rates of up to 480 Mbps
- Normal and low power operating modes
- Plug & Play compatible
- Backwards compatible with USB 1.1 devices

System Requirements

- PC or Mac with an available 32-Bit PCI slot
- CD-ROM Drive
- PC: Windows 98SE/ME/2000/XP
- Mac: OS 10.x

Hardware Installation

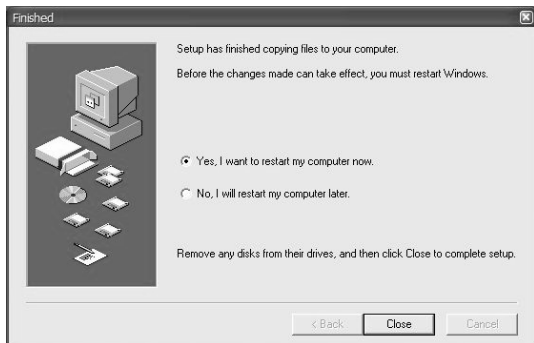
1. Power off your computer
2. Remove the case cover screws and remove the case
3. Locate a spare 32-Bit PCI slot
4. Unscrew the PCI slot blanking plate and retain the screw
5. Carefully insert the PCI card into the slot. Make sure it is seated correctly
6. Secure the card using the retained screw
7. Replace the case and reinstall the screws
8. Power on your computer and proceed with driver installation

Driver Installation (Windows)

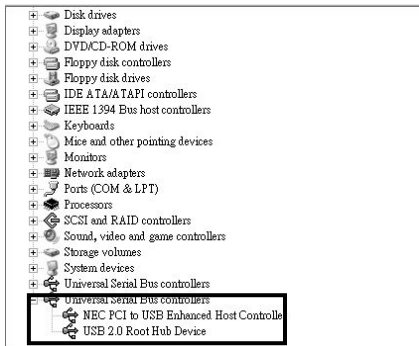
1. Boot up the operating system
2. Insert the Driver CD into your CD-ROM drive and locate the following path -

\\USB\70580\PC Driver

3. Click the **Setup.exe** file to begin installation. After the files are copied you will be asked to restart your computer. Select **Yes, I want to restart my computer now**



- After restarting your system, please launch Windows device manager –
[My Computer]→[Properties]→[Hardware]→[Device Manager]
- Check for the correct entry (as outlined below) -



Note! If there is a yellow exclamation mark against the **NEC PCI to USB 2.0 Enhanced Host Controller** or **USB 2.0 Root Hub Device**, please remove this item from the Device Manager by clicking the **Uninstall** button, then click **Refresh** to reinstall this driver again.

Driver Installation (Mac OS 10.x)

For OS X 10.2 or later:

Use the file **USB2EHCI_v2_0.img.bin** in the **/USB/USB2.0-NEC/MAC 10.2** directory on the driver CD.

For OS X 10.1.x:

Use the file **USB2EHCI_v1075.img.bin** in the **/USB/USB2.0-NEC/MAC 10.1.5** directory on the driver CD.

1. Double click the file icon; Stuffit Expander will run automatically. It will ask you for the destination to extract the files. Simply select Desktop as your destination and click the **Choose** button.



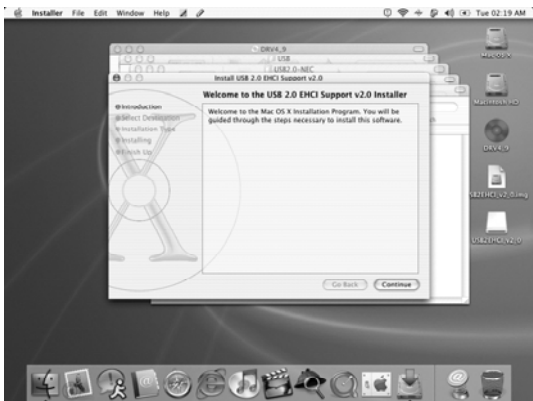
2. The driver will be extracted on to your desktop. It is stored in disk image format; the image will be mounted automatically



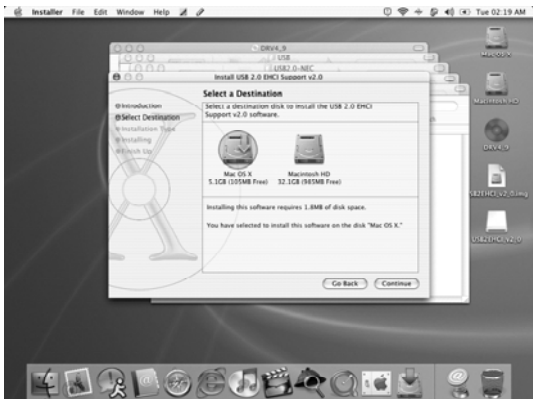
3. Double click on the driver file icon. You will be prompted to enter your password. If your account does not have administrative access, you must enter the user name and password that does.



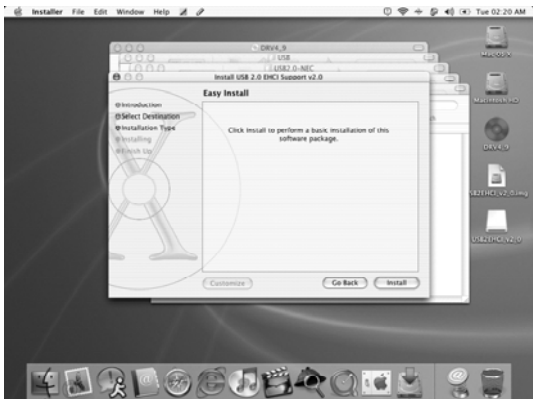
4. The **Welcome to the USB 2.0 EHCI Support v2.0 Installer** will appear. Click the **Continue** button



5. Select your Mac OS X system drive then click the **Continue** button



6. Click the **Install** button to perform the installation procedure
Download from [Www.Somanuals.com](http://www.somanuals.com). All Manuals Search And Download.



7. Click the **Continue Installation** button to confirm
8. Click the **Restart** button to complete installation



Free Manuals Download Website

<http://myh66.com>

<http://usermanuals.us>

<http://www.somanuals.com>

<http://www.4manuals.cc>

<http://www.manual-lib.com>

<http://www.404manual.com>

<http://www.luxmanual.com>

<http://aubethermostatmanual.com>

Golf course search by state

<http://golfingnear.com>

Email search by domain

<http://emailbydomain.com>

Auto manuals search

<http://auto.somanuals.com>

TV manuals search

<http://tv.somanuals.com>