

**RTL8139D**  
**10/100Mbps LAN Card**  
**User Manual**

**Ver: 1.0**

# Table of Contents

<b>CHAPTER 1 INTRODUCTION .....</b>	<b>3</b>
1.1 FEATURES .....	3
1.2 ENVIRONMENTAL .....	3
1.3 PACKAGE.....	4
<b>CHAPTER 2 INSTALLATION.....</b>	<b>5</b>
2.1 INSTALLING THE LAN CARD.....	5
2.2 SOFTWARE INSTALLATION .....	5

## **Chapter 1 Introduction**

Congratulations on your purchase of this 10/100Mbps LAN Card RTL8139D. The LAN Card is a high performance network adapter for desktop computers with 32-bit PCI expansion slots. The 10/100 LAN Card is ready to run with both 10BaseT and 100BaseTX networks right out of the box – the card's 10/100 combo RJ-45 port automatically detects your network's maximum speed and adjusts itself accordingly. Instructions for installing and configuring this product can be found in this manual. Before you install and use this product, please read this manual carefully for full exploiting the functions of this product.

### **1.1 Features**

Designed for versatility and performance, the RTL8139D Card provides the following:

- Bus Mastering 32-bit Architecture support 100Mbps speeds
- Compliance with IEEE802.3 Fast Ethernet standards
- Easy to Use Plug-and-Play 10/100 PCI Network Card
- Support PCI Revision 2.2
- Support half and full duplex at 10/100Mbps
- One build-in RJ45 connector
- Auto-Negotiation to the highest available speed
- Support flow control functions
- Support separate 2K bytes FIFO for Receive and Transmit data
- Support LED indicators for monitoring Link/Activity
- Support loopback capability
- Support up to 64K(128k) byte Boot Rom capability
- Support advanced power saving mode when LAN function or wakeup function is not used
- Support wake-On-LAN function and remote wake-up (option)
- Driver support for:
  - Microsoft Windows Series.
  - Linux
  - Novell Netware Series

### **1.2 Environmental**

- Storage Temperature: -40° C ~70° C
- Operating Temperature : 0° C ~40° C
- Storage Humidity: 5% ~90% RH Non-condensing
- Operating Humidity: 10% ~90% RH Non-condensing

## **1.3 Package**

- One RTL8139D 10/100M LAN Card
- RTL8139D Manual
- RTL8139D Drives and Manual on CD-ROM

## Chapter 2 Installation

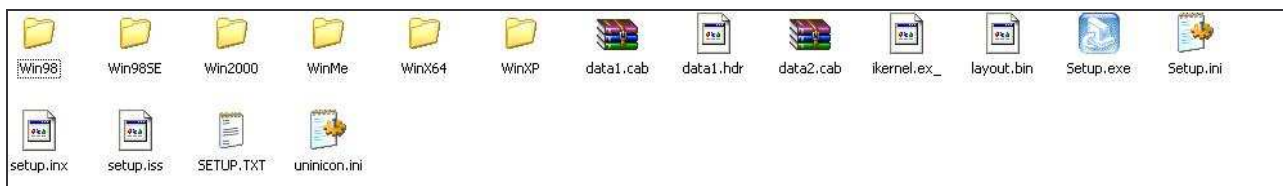
### 2.1 Installing the LAN Card

1. Shut down the computer, unplug its power cord, and remove the chassis cover.
2. Insert the contact edge of the RTL8139D card into the connector of any available PCI Bus Master expansion slot. Press the card firmly into the connector such that the card contacts are fully seated in the connectors
3. Install the bracket screw that secures the card to the computer chassis.
4. Replace the computer chassis cover.
5. Connect one end of a twisted-pair cable to your PC at the RTL8139D card's RJ-45 port.
6. Plug the other end of the cable into one of your network's hub or switch ports, DSL modem, cable modem, router, etc. (Category 3 and 5 link lengths are limited to 100 meters.)
7. Reconnect the computer power cord, and switch computer power on. If the BIOS section of your computer boot program is Plug-and-Play compliant, then at power-up the BIOS will automatically configure any newly installed RTL8139D card.

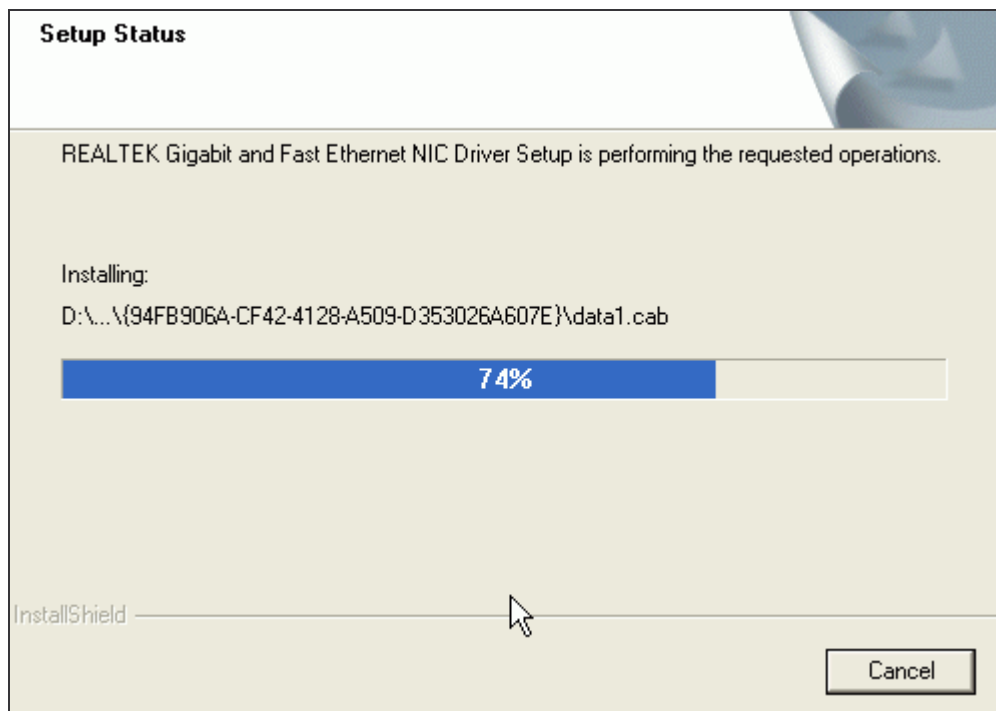
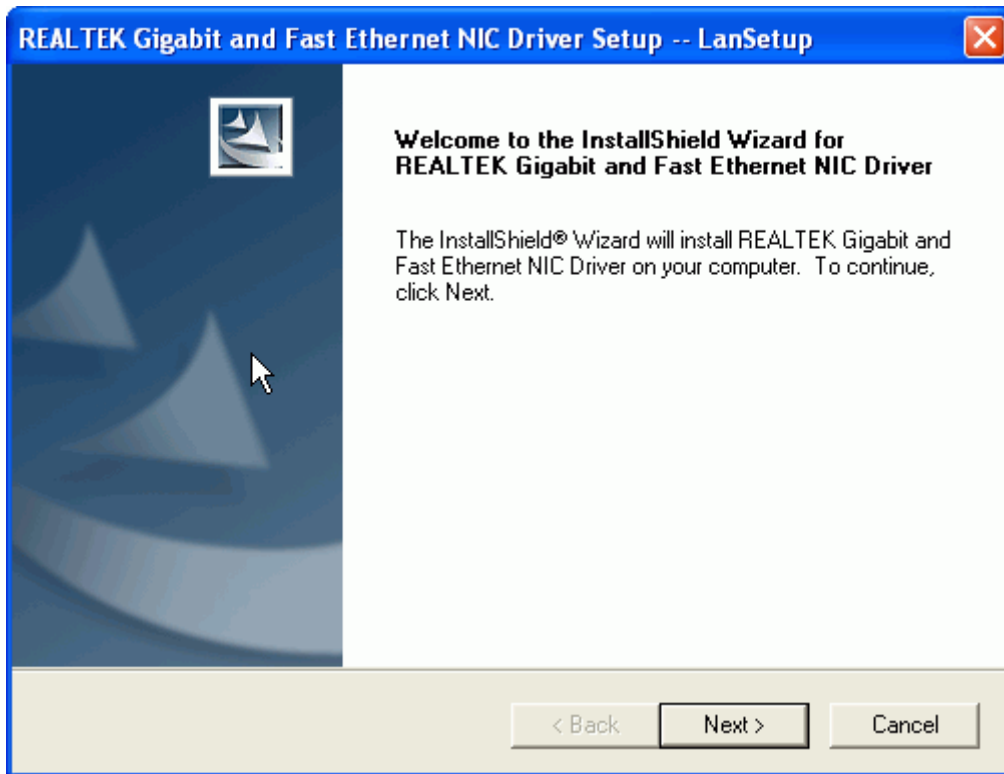
### 2.2 Software Installation

The following instruction set up the LAN card in the computer running windows XP.

1. Start and log on your Windows XP.
2. Put the RTL8309D CD-ROM into computer's CD driver, Double Click the CD driver. Then the dialog box will appear as follow.



3. Double Click **Setup.EXE**, The drive is beginning to install.
4. The Setup dialog box will appear as follow, Click the **Next** button to continue the wizard.



5. In the right bottom corner of the status bar, an icon will appear as follow.



You will enjoy the many advantages of joining a RTL8139D card.

## Free Manuals Download Website

<http://myh66.com>

<http://usermanuals.us>

<http://www.somanuals.com>

<http://www.4manuals.cc>

<http://www.manual-lib.com>

<http://www.404manual.com>

<http://www.luxmanual.com>

<http://aubethermostatmanual.com>

Golf course search by state

<http://golfingnear.com>

Email search by domain

<http://emailbydomain.com>

Auto manuals search

<http://auto.somanuals.com>

TV manuals search

<http://tv.somanuals.com>