



The Benchmark for Value in CCTV

OPERATOR'S MANUAL

English version 1.0



DHU500 SERIES

MPEG4 Networkable DVR

DIGIMERGE™



Thank you for purchasing the DHU500 Series DVR. Digimerge is committed to providing our customers with a high quality, reliable security product.

The DHU500 Series line of Pentaplex Network DVR's offer a full-featured Networkable video recording solution. Record in Real Time with 120 fps recording capability. Images can be easily transferred using the built in CDRW optical drive or USB flash drive. The system can be viewed and controlled over the internet from a remote location with a password protected browser-based application. Easy access via the Free Digimerge DDNS Service is included.

To learn more about this DHU500 Series DVR, and to learn about our complete range of accessory products, please visit our website at:

<http://www.digimerge.com>



CAUTION

RISK OF ELECTRIC SHOCK
DO NOT OPEN



CAUTION: TO REDUCE THE RISK OF ELECTRIC SHOCK
DO NOT REMOVE COVER (OR BACK).
NO USER SERVICEABLE PARTS INSIDE.
REFER SERVICING TO A QUALIFIED SERVICE PERSONNEL



The lightning flash with arrowhead symbol, within an equilateral triangle, is intended to alert the user to the presence of uninsulated "dangerous voltage" within the product's enclosure that may be of sufficient magnitude to constitute a risk of electric shock to persons.



The exclamation point within an equilateral triangle is intended to alert the user to the presence of important operating and maintenance (servicing) instructions in the literature accompanying the appliance.

**WARNING: TO PREVENT FIRE OR SHOCK HAZARD,
DO NOT EXPOSE THIS UNIT TO RAIN OR MOISTURE.**

**CAUTION: TO PREVENT ELECTRIC SHOCK, MATCH WIDE BLADE
OF PLUG TO WIDE SLOT, FULLY INSERT.**



Important Safeguards

In addition to the careful attention devoted to quality standards in the manufacture process of your video product, safety is a major factor in the design of every instrument. However, safety is your responsibility too. This sheet lists important information that will help to assure your enjoyment and proper use of the video product and accessory equipment. Please read them carefully before operating and using your video product.

Installation

1. **Read and Follow Instructions** - All the safety and operating instructions should be read before the video product is operated. Follow all operating instructions.
2. **Retain Instructions** - The safety and operating instructions should be retained for future reference.
3. **Heed Warnings** - Comply with all warnings on the video product and in the operating instructions.
4. **Polarization** - Do not defeat the safety purpose of the polarized or grounding-type plug.

A polarized plug has two blades with one wider than the other.



A grounding type plug has two blades and a third grounding prong.

The wide blade or the third prong are provided for your safety.



If the provided plug does not fit into your outlet, consult an electrician for replacement of the obsolete outlet

5. **Power Sources** - This video product should be operated only from the type of power source indicated on the marking label. If you are not sure of the type of power supply to your location, consult your video dealer or local power company. For video products intended to operate from battery power, or other sources, refer to the operating instructions.
6. **Overloading** - Do not overload wall outlets of extension cords as this can result in the risk of fire or electric shock. Overloaded AC outlets, extension cords, frayed power cords, damaged or cracked wire insulation, and broken plugs are dangerous. They may result in a shock or fire hazard. Periodically examine the cord, and if its appearance indicates damage or deteriorated insulation, have it replaced by your service technician.
7. **Power-Cord Protection** - Power supply cords should be routed so that they are not likely to be walked on or pinched by items placed upon or against them, paying particular attention to cords at plugs, convenience receptacles, and the point where they exit from the video product.

8. **Ventilation** - Slots and openings in the case are provided for ventilation to ensure reliable operation of the video product and to protect it from overheating. These openings must not be blocked or covered. The openings should never be blocked by placing the video equipment on a bed, sofa, rug, or other similar surface. This video product should never be placed near or over a radiator or heat register. This video product should not be placed in a built-in installation such as a bookcase or rack unless proper ventilation is provided or the video product manufacturer's instructions have been followed.

9. **Attachments** - Do not use attachments unless recommended by the video product manufacturer as they may cause a hazard.

10. **Water and Moisture** - Do not use this video product near water. For example, near a bath tub, wash bowl, kitchen sink or laundry tub, in a wet basement, near a swimming pool and the like.

Caution: Maintain electrical safety. Powerline operated equipment or accessories connected to this unit should bear the UL listing mark of CSA certification mark on the accessory itself and should not be modified so as to defeat the safety features. This will help avoid any potential hazard from electrical shock or fire. If in doubt, contact qualified service personnel.

11. **Accessories** - Do not place this video equipment on an unstable cart, stand, tripod, or table. The video equipment may fall, causing serious damage to the video product. Use this video product only with a cart, stand, tripod, bracket, or table recommended by the manufacturer or sold with the video product. Any mounting of the product should follow the manufacturer's instructions and use a mounting accessory recommended by the manufacturer.





Service

13. **Servicing** - Do not attempt to service this video equipment yourself as opening or removing covers may expose you to dangerous voltage or other hazards. Refer all servicing to qualified service personnel.
14. **Conditions Requiring Service** - Unplug this video product from the wall outlet and refer servicing to qualified service personnel under the following conditions.
 - A. When the power supply cord or plug is damaged.
 - B. If liquid has been spilled or objects have fallen into the video product.
 - C. If the video product has been exposed to rain or water.
 - D. If the video product does not operate normally by following the operating instructions. Adjust only those controls that are covered by the operating instructions. Improper adjustment of other controls may result in damage and will often require extensive work by a qualified technician to restore the video product to its normal operation.
 - E. If the video product has been dropped or the cabinet has been damaged.
 - F. When the video product exhibits a distinct change in performance. This indicates a need for service.
15. **Replacement Parts** - When replacement parts are required, have the service technician verify that the replacements used have the same safety characteristics as the original parts. Use of replacements specified by the video product manufacturer can prevent fire, electric shock or other hazards.
16. **Safety Check** - Upon completion of any service or repairs to this video product, ask the service technician to perform safety checks recommended by the manufacturer to determine that the video product is in safe operating condition.
17. **Wall or Ceiling Mounting** - The cameras provided with this system should be mounted to a wall or ceiling only as instructed in this guide, using the provided mounting brackets.
18. **Heat** - The product should be situated away from heat sources such as radiators, heat registers, stoves, or other products (including amplifiers) that produce heat.

Use

19. **Cleaning** - Unplug the video product from the wall outlet before cleaning. Do not use liquid cleaners or aerosol cleaners. Use a damp cloth for cleaning.
20. **Product and Cart Combination** - Video and cart combination should be moved with care. Quick stops, excessive force, and uneven surfaces may cause the video product and car combination to overturn.
21. **Object and Liquid Entry** - Never push objects for any kind into this video product through openings as they may touch dangerous voltage points or "short-out" parts that could result in a fire or electric shock. Never spill liquid of any kind on the video product.
22. **Lightning** - For added protection for this video product during a lightning storm, or when it is left unattended and unused for long periods of time, unplug it from the wall outlet and disconnect the antenna or cable system. This will prevent damage to the video product due to lightning and power line surges.



NOTE

This equipment has been certified and found to comply with the limits regulated by FCC, EMC, and LVD. Therefore, it is designated to provide reasonable protection against interference and will not cause interference with other appliance usage.

However, it is imperative that the user follows this manual's guidelines to avoid improper usage which may result in damage to the unit, electrical shock and fire hazard injury.

In order to improve the feature functions and quality of this product, the specifications are subject to change without notice from time to time.

FCC CLASS B NOTICE

Note:

This equipment has been tested and found to comply with the limits for a Class B digital device, pursuant to Part 15 of the FCC Rules. These limits are designed to provide reasonable protection against harmful interference in a residential installation. This equipment generates, uses, and can radiate radio frequency energy and, if not installed and used in accordance with the instruction, may cause harmful interference to radio communications.

However, there is no guarantee that interference will not occur in a particular installation. If this equipment does cause harmful interference to radio or television reception (which can be determined by turning the equipment on and off), the user is encouraged to try to correct the interference by one or more of the following measures:

- Reorient or relocate the receiving antenna
- Increase the separation between the equipment and receiver
- Connect the equipment into an outlet on a circuit different from that to which the receiver is connected
- Consult the dealer or an experienced radio or television technician for assistance

General Precautions

1. All warnings and instructions of this manual should be followed
2. Remove the plug from the outlet before cleaning. Do not use liquid aerosol detergents. Use a water dampened cloth for cleaning
3. Do not use this unit in humid or wet places
4. Keep enough space around the unit for ventilation. Slots and openings in the storage cabinet should not be blocked
5. During lightning storms, or when the unit is not used for a long time, disconnect the power supply, antenna, and cables to protect the unit from electrical surge

DIGIMERGE TECHNOLOGIES INC.

<http://www.digimerge.com>

Table of Contents

Section 1 - Location and Control	
DHU500 Series - Front	8
DHU500 Series - Back	10
Section 2 - Remote Control.....	14
Section 3 - Operating the DVR	15
Starting the DVR - Self Test Screens	16
Starting the DVR - QUAD Display	16
Powering Off the DVR/Stopping Recording.....	16
Main Menu Control	17
Event Search Functions.....	18
Date / Time Search.....	19
Calendar Search.....	19
Backup Menu.....	20
Log View.....	21
Accessing with Web Client	22
Internet Explorer Settings - Active X Controls	22
Internet Explorer Settings - Allowing Pop-Ups	23
DigiClient Software	24
Minimum System Requirements:	24
Logging Into Live Monitoring	24
Web Client - Main Window	25
Channels Window	26
Detail Tabs	26
Remote/Local Controls	26
System	27
Remote/Local Controls	28
Local	28
Save Controls	29
Live	30
Disconnect	30
Pan/Tilt/Zoom	30
Display Options	31
Connect Button	31
Setup	31
Remote Setup	31
Local Setup	32
Firmware Upgrade	38
Channel Buttons	38
Date / Time	38



The Benchmark for Value in CCTV

SECTION 1

LOCATION AND CONTROL

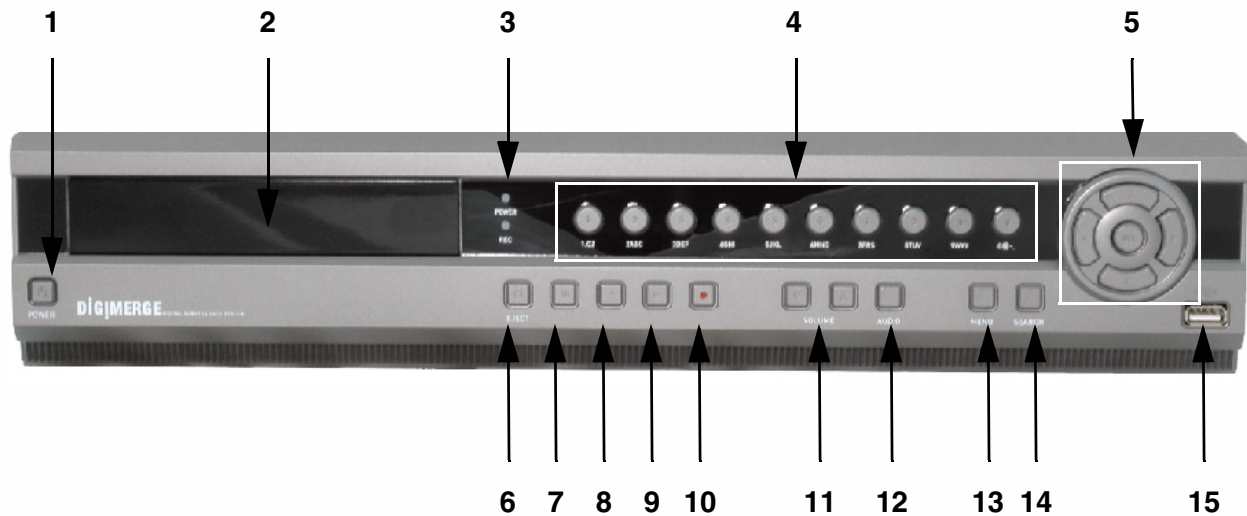


DHU500 Series - Front View.....	8
DHU500 Series - Rear View	10

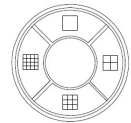
DIGIMERGE™

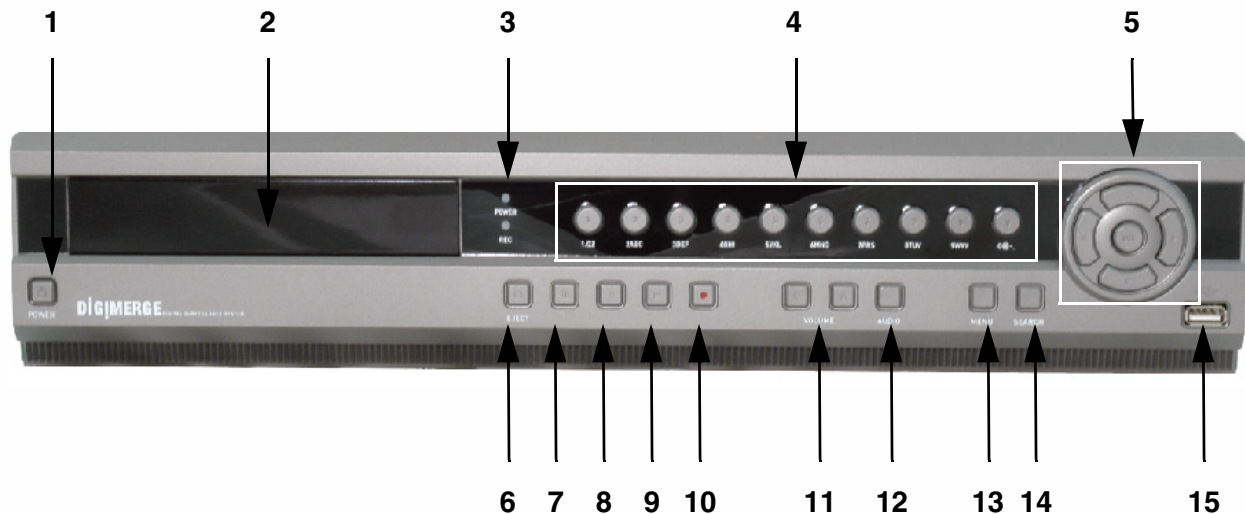


DHU500 Series - Front



1. **POWER** - Turns the DVR unit ON/OFF.
2. **CDRW DRIVE** - Drive bay for CD-RW Drive
3. **LED POWER AND HDD LIGHTS** - Indicates unit power and HDD activity
4. **NUMBER / LETTER PAD**
 - Use the numbers to switch between cameras in View mode.
 - Use the Numbers and Letters for Menu data input.
5. **SCREEN SELECT / MENU NAVIGATION** - Performs a dual purpose:
 - Changes the Camera view to Single, 4 Camera, 9 Camera or 16 Camera views.
 - Use the $\uparrow\downarrow\leftarrow\rightarrow$ buttons to navigate through the MENU options (in MENU mode).
6. **STOP / EJECT** - Stops the playback of a previously recorded event / Ejects the CDRW Drive.
7. **PAUSE** - Pauses the playback of a previously recorded event.
8. **REV** - REVERSES the playback of a previously recorded event.

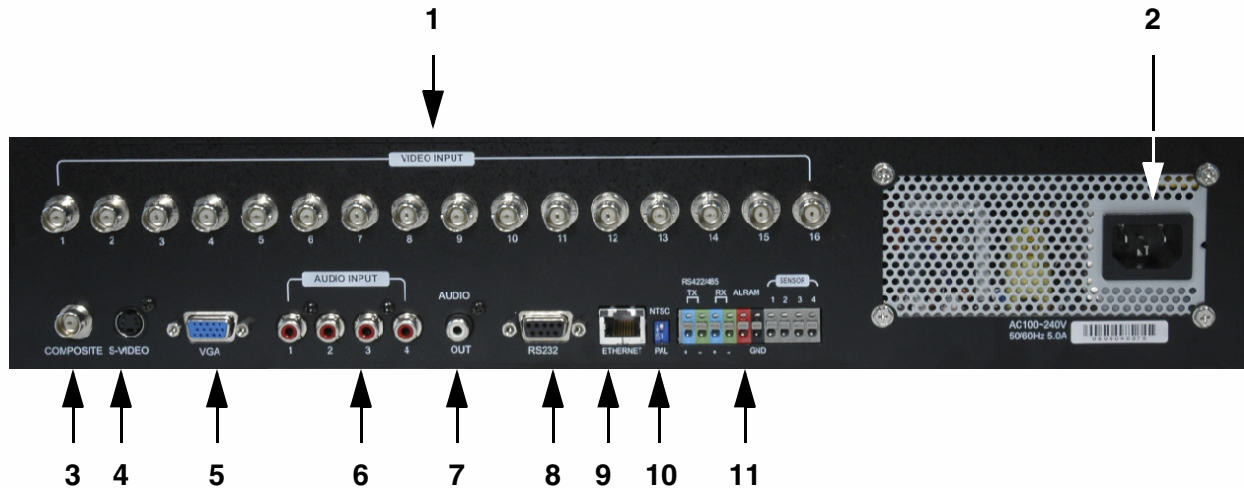




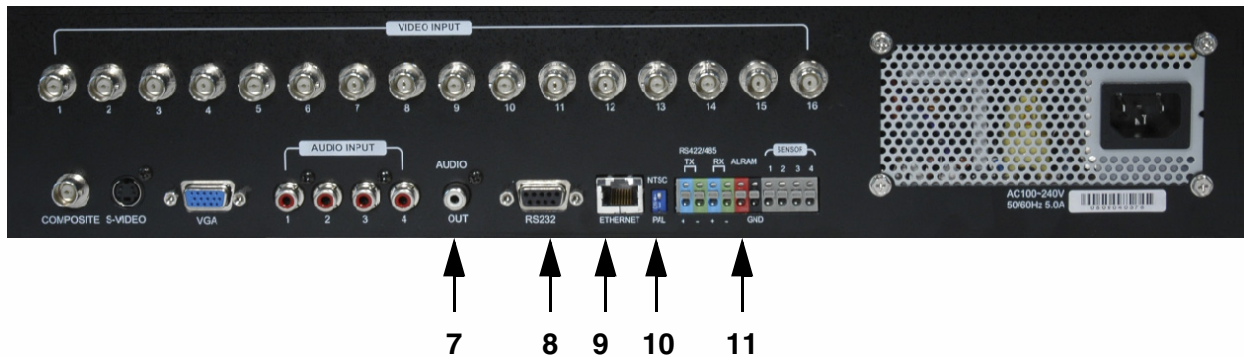
9. **PLAY/FWD** - Starts the playback of a previously recorded event. If the PLAY/FF button is pressed during playback, the FAST FORWARD option will become active.
10. **REC** - Manually starts/stops recording of the currently displayed camera.
11. **VOLUME UP / DOWN** - Raises and Lowers the system volume.
12. **AUDIO** - Switches between cameras 1-4 to receive audio
 - * Only one channel audio available on the 4-Channel DVR Model.
13. **MENU** - Accesses the DVR system menu options. See page 16 for details.
14. **SEARCH** - Accesses the Search Menu. See page 40 for Search Menu options
15. **USB PORT** - Connection port for a removable USB Hard Drive (USB Key)



DHU500 Series - Back



1. **BNC VIDEO INPUTS** - Video inputs for direct connection to Cameras or for looping input to a DVR. The number of ports will vary based on the DVR model (4 Channel, 8 Channel or 16 Channel).
2. **AC INPUT** - Connect the AC power using the power cord provided with the unit from the DVR to an electrical outlet.
3. **COMPOSITE** - A Composite Video OUT connection used to connect the DVR to a Slave Monitor or DVR.
4. **S-VIDEO** - Outgoing connection for S-VIDEO.
5. **VGA PORT** - Used to connect the DVR to a computer Monitor.
6. **AUDIO INPUTS** - Connect up to 4 camera Audio inputs.



7. **AUDIO OUT** - Connect the Audio OUT to the AUDIO IN on an DVR or Monitor.
8. **RS232 PORT** - Connection for an RS-232 Device.
* Not available on 4-Channel DVR Model.
9. **ETHERNET PORT** - Connects the DVR to a router for connection to the internet. Refer to the Instructions on Page 51 for Remote Connection.
10. **NTSC/PAL SWITCH** - Changes the DVR unit between NTSC and PAL modes.
11. **ALARM / SENSOR BLOCK** - Ports for connecting an Alarm or Sensor Device (such as a Motion Sensor or Window/Door Sensor).



The Benchmark for Value in CCTV

SECTION 2

REMOTE CONTROL



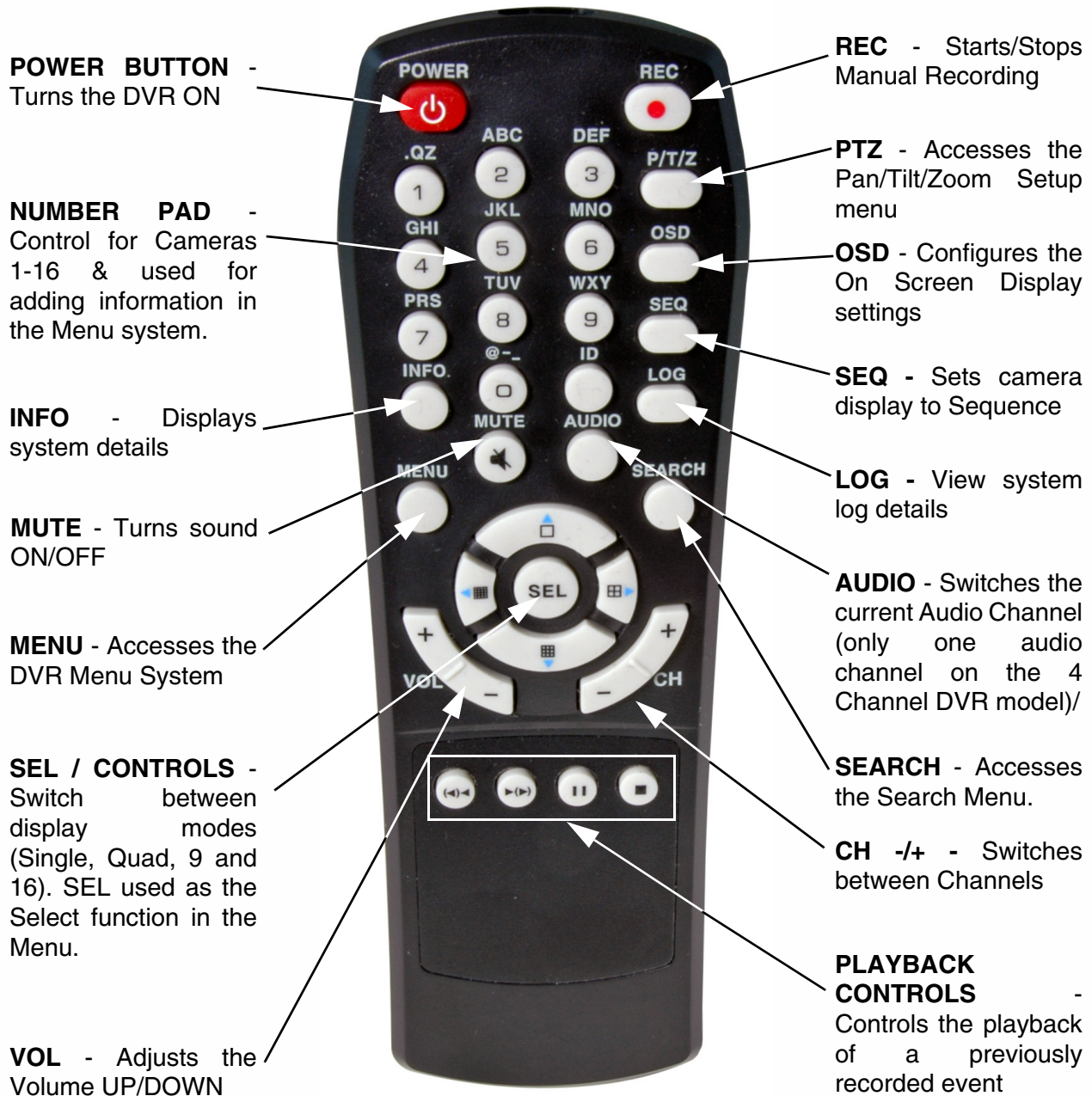
Remote Control 14

DIGIMERGE™



Remote Control

Listed below is a quick reference for the Remote Control. For details on specific features, refer to the DHU500 Series - Front Panel features on Pages 10-11



NOTE - Remote Control may not be exactly as shown - color may vary.



The Benchmark for Value in CCTV

SECTION 3

OPERATING THE DVR



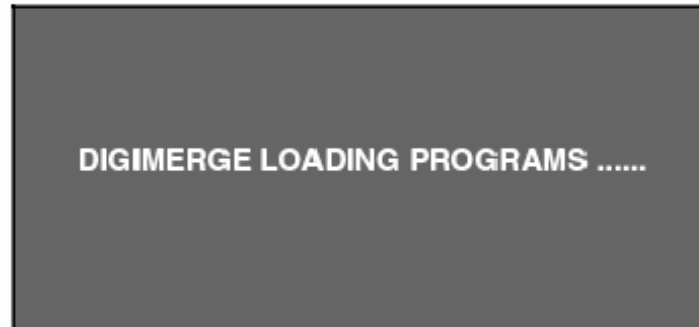
Starting the DVR - Self Test Screens	16
Starting the DVR - QUAD Display	16
Powering Off the DVR	16
Main Menu Control	17
Event Search Function	18
Accessign the DVR Locally/Remotely	22
Web Client Software	24
Web Client - Main Window	25

DIGIMERGE™



Starting the DVR - Self Test Screens

Once the DVR has been connected and powered on, the following self-test screens will appear:



NOTE: If a new **HARD DRIVE** is detected by the system, the DVR will automatically **FORMAT** the new drive.

Starting the DVR - QUAD Display

After the system self-tests have been completed, the DVR will switch to the **CAMERA** viewing screens (in **QUAD MODE**) with the following information displayed on screen:

- **CH1-CH4:** Camera title indicators
- **HDD%:** Percentage of Hard Drive used
- **MM/DD/YYYY - HH:MM:SS:** The current system date and time.

If a camera is not detected, or the Camera is in **COVERT MODE**, the associated portion of the **QUAD** or **MULTI** screen will display a **BLUE SCREEN**.



Powering Off the DVR/Stopping Recording

In order to power down the DVR Unit, or to manually stop the current recording, the default system password of '00000000' will need to be entered (when prompted). If the default password is changed, then the new user specified password will be used instead.



Main Menu Control

- Enter the **MENU** screen by pressing the **MENU** button. The System Password may be required, based on system settings.
- Scroll through the 5 Main options by pressing the **↑↓** buttons.
- To enter a sub-menu, navigate to the option and press the **SEL** button.
- To exit a **SUBMENU**, press the **MENU** button. To save the changes, select the **SAVE & EXIT** option and press the **SEL** button.
- Pressing the **MENU** button from the **MAIN MENU** will exit the **MENU** configuration screen

Outlined below are the buttons used to access menu settings:

- ↑↓←→** : Scroll up and down within a menu option / Change menu options
- SEL** : Press this button to select and change the values in a menu option
- MENU** : Complete modifications of a menu option; exit a menu

NOTE:

After 60 seconds of inactivity in the Menu mode, the system will go back to the previously displayed live camera screen

DISPLAY SET	Set the display options
RECORDING SET	Set the Recording options
SYSTEM SET	Set the System options
NETWORK SET	Set the Network Options
EVENT NOTIFICATION	Setup for Event Notifications through Email

MAIN MENU

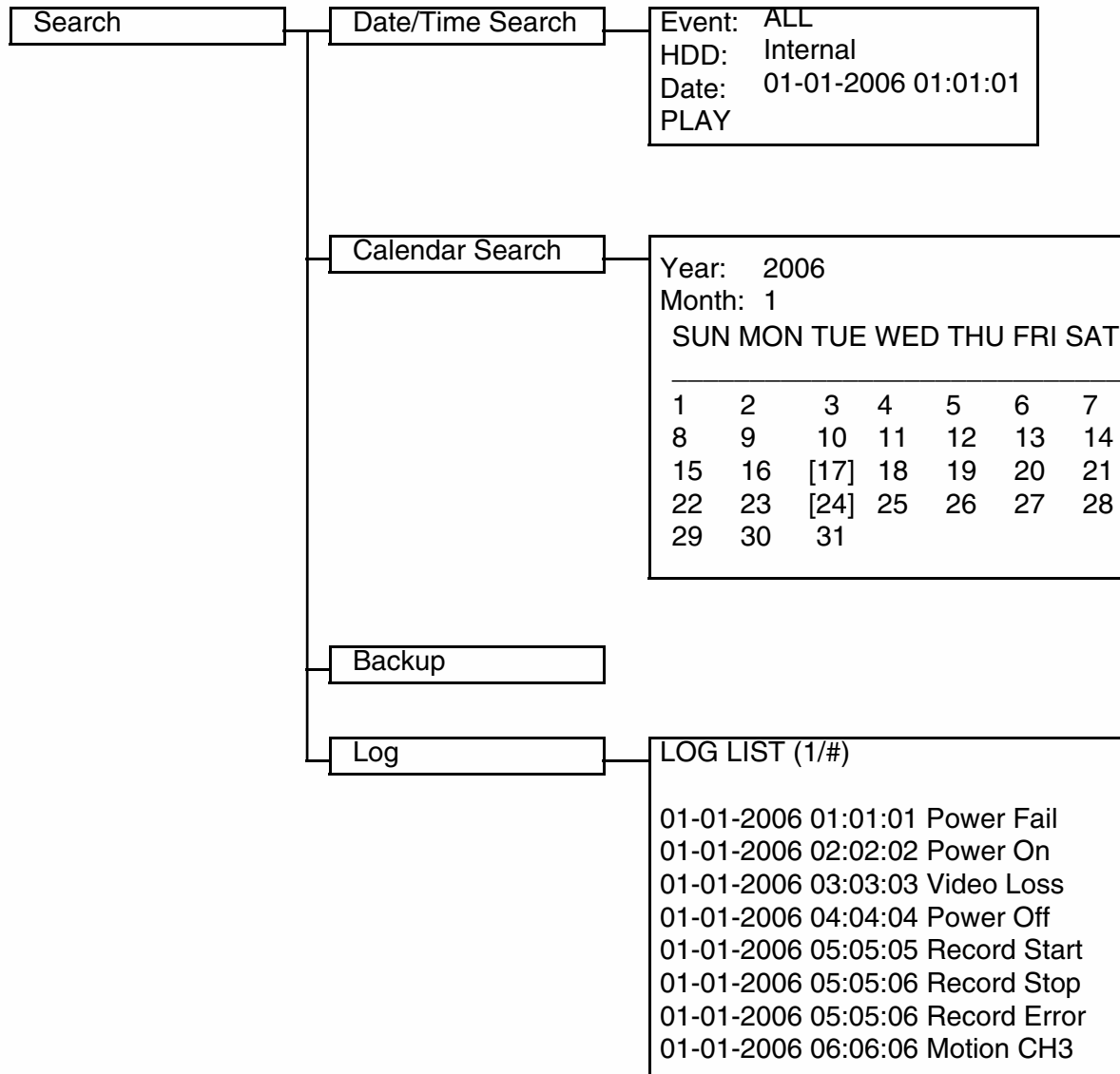
DISPLAY SET
RECORDING SET
SYSTEM SET
NETWORK SET
EVENT NOTIFICATION



Event Search Function

The Event Search function is used to locate previously recorded events (Motion, Sensor or Manual Event recording), and to view a list of logged system events.

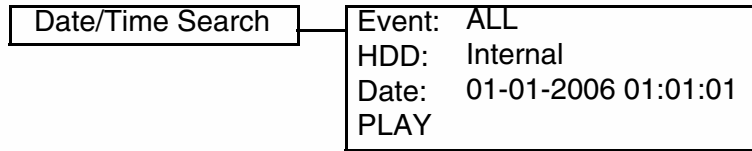
Press the SEARCH button located on the front panel of the DVR to access the Event Search Menu.





Date / Time Search

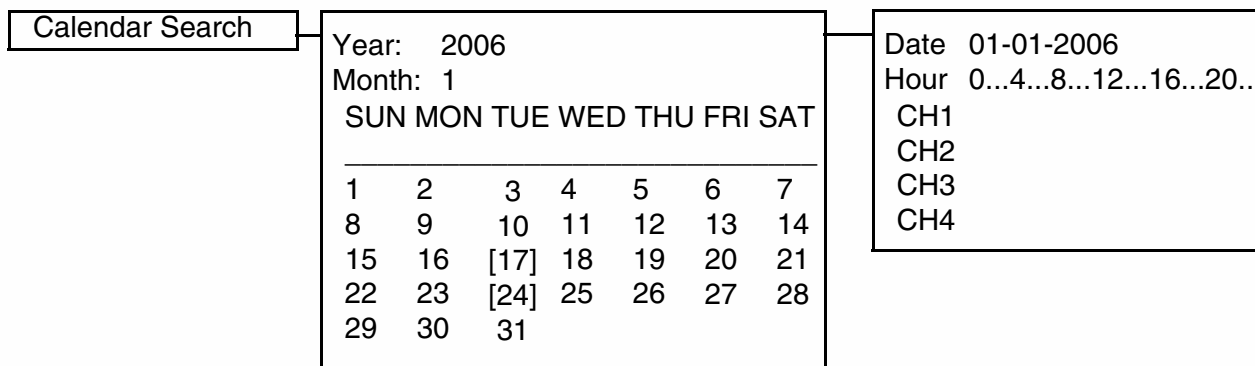
Search and play previously recorded events by Date, Time and Event type.



- EVENT:** Select an event type - Alarm, Motion or All. Press the ↑ and ↓ buttons to highlight, and press ←→ buttons to select an event type.
- HDD:** Select a Hard Drive (if multiple drives are available). Press the ↑ and ↓ buttons to highlight, and press ←→ buttons to select a Hard Drive type.
- DATE:** Select a date to search. Press the ↑ and ↓ buttons to highlight, and press the number pad keys on the front of the DVR to set the Date and Time.
- PLAY:** Plays a selected event. Press the ↑ and ↓ buttons to highlight, and press the **SEL** button to play.

Calendar Search

Search and play previously recorded events in Calendar format.



(Dates with recording set to ON will have [] brackets)

- YEAR:** Select the Year. Press the ↑ and ↓ buttons to highlight, and press ←→ buttons to select a year.
- MONTH:** Select the Month. Press the ↑ and ↓ buttons to highlight, and press ←→ buttons to select a month.
- DATE:** Select a date to search. Press the ←→↑ and ↓ buttons to select a Day from the Calendar, and press the SEL button to access the Date Submenu.



Backup Menu

A USB Memory Stick can be connected to the front panel of the DVR, and is used as a backup device or to upgrade the Firmware on the DVR.

Backup to USB / CDRW

1. Insert the USB Memory Stick into the DVR or place a CD in the CDRW Drive, then choose the Backup Menu from the Search Function.

NOTE: The Memory Stick should be Formatted on a PC prior to copying data from the DVR Unit.

2. Press the Search Button on the front panel of the DVR. Select the Backup option to access the Backup Menu.

- Backup Device: Indicates the detected device is a FLASH Memory Stick or a CDRW Disk
- Device Format - Clears all data from the FLASH Memory Stick
- File Format - Set to EXCLUSIVE or AVI. EXCLUSIVE is the proprietary format of the DVR unit, where AVI can be played through Windows Media Player.
- FROM / TO - Specify the date range for backup
- CHANNEL - Select an individual Channel (1-16 depending on the DVR model) to backup to the Memory Stick (in AVI Format). If the File Format is set to Exclusive, all channels will be backed up.
- Transfer - Sends the data to the memory stick or CDRW.

BACKUP

```
BACKUP DEVICE: FLASH
DEVICE FORMAT
FILE FORMAT: EXCLUSIVE AVI
FROM: 01-01-2006 01:02:03
TO: 01-01-2006 04:05:06
CHANNEL: 1
CALCULATING BACKUP SIZE
TRANSFER
```

```
FREE/TOTAL SPACE 49M/250M
REQUIRED SPACE 60M
```

3. Select the "Calculate Backup Size" option. This will provide the DVR with the total free space available to the backup device.
4. Select the "Transfer" option to backup the data to the selected device (Memory Stick or CDRW).
5. Press the Search Button to exit the Backup mode.

Compatible USB Devices

The following USB devices have been tested successfully with the DHU500 Series DVR:

- Lexar Jumpdrive 128/256 MB
- SanDisk Mini Cruzer 128 MB
- SanDisk Cruzer Micro 256 MB



Log View

Displays all logged system events.

Log	LOG LIST (1/#)
	01-01-2006 01:01:01 Power Fail
	01-01-2006 02:02:02 Power On
	01-01-2006 03:03:03 Video Loss
	01-01-2006 04:04:04 Power Off
	01-01-2006 05:05:05 Record Start
	01-01-2006 05:05:06 Record Stop
	01-01-2006 05:05:06 Record Error
	01-01-2006 06:06:06 Motion CH3

Navigate through events using the ↑ and ↓ buttons to highlight, and press the SEL key on the front of the DVR to view an event (i.e. View a previously recorded Motion Event by selecting the Motion CH listing, and pressing the SEL button to start the playback).

NOTE: Not all events are viewable recordings (i.e. Power Fail, Menu Set, etc.) These event types are displayed for record purposes only, and do not provide corresponding video.



Accessing with Web Client

Once the DVR and Network have been successfully configured, a connection can be made with a Local PC (a PC within the same network as the DVR), or remotely (a PC from outside the network via the Internet) using Microsoft Internet Explorer:

Local: Use the internal network IP address. For Example:

- http://192.168.0.150

If you are using a different Web server port number, you will need to add this to the end of the address (i.e. using port 2005):

- http://192.168.0.150:2005

Remote: Use either the external IP address or the DDNS name:

- http://216.15.59.221
- http://tomsmith.digimerge.net

If you are using a different Web server port number, you will need to add this to the end of the address (i.e. using port 2005):

- http://216.15.59.221:2005
- http://tomsmith.digimerge.net:2005

Internet Explorer Settings - Active X Controls

To correctly load the Web Client Software, the security settings in Internet Explorer may need to be adjusted:

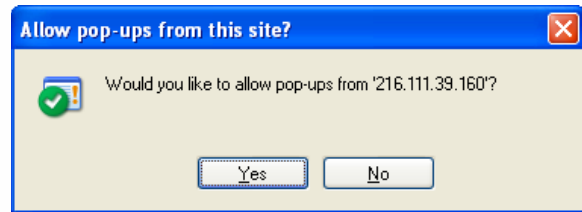
1. Open Internet Explorer. Click TOOLS and select INTERNET OPTIONS.
2. Select the SECURITY tab, and click the CUSTOM LEVEL button. Change the following settings:
 - Active X Controls and Plug-ins:
 - Set 'Automatic Prompting for Active X Controls' to Disable
 - Set 'Download Unsigned Active X Controls' to Prompt
 - Miscellaneous:
 - Set 'Allow script-initiated windows without size or position constraints' to Enable
3. Click on APPLY and OK to close the INTERNET OPTIONS window.



Internet Explorer Settings - Allowing Pop-Ups

The Web based client software requires the use of Pop-Ups in Internet Explorer. Once the address has been entered into the Address bar, an alert may appear indicating that a Pop-Up window has been blocked:

1. Click on the Pop-Up warning on the Internet Explorer Window to access the Pop-Ups drop down menu
2. Select 'Always Allow Pop-ups from This Site'
3. A prompt window will appear to Allow the Pop-Up from this site. Select YES.



NOTE: If you have a Pop-Up blocker installed, you may need to disable it prior to loading the Web Client Software.

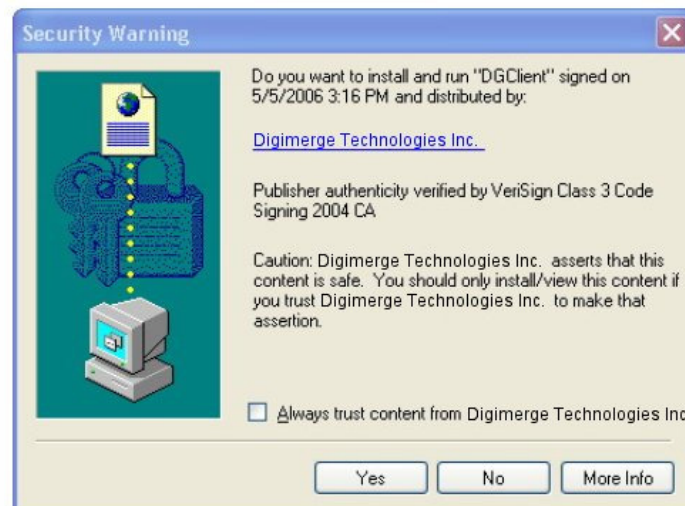
Internet Explorer Settings - Installing the Active-X Controls

The Web based client software requires the use of Active-X Controls:

1. Click on the Security warning on the Internet Explorer Window to access the Security drop down menu
2. Select 'Install Active X Control'



3. A Security prompt window will appear to Install and Run the 'DG Client'. Select YES





Web & Digi Client Software

Minimum System Requirements:

The minimum requirements are the same for the 4, 8 and 16 channel models.

- Operating System: Windows XP Home or Professional
- CPU: Pentium 4 1.7GHZ or equivalent
- Memory: 512 MB or greater
- Hard Drive Space: Minimum of 30 MB Install Space. Additional hard drive space is required for saving DVR data to the local PC.

Logging Into Live Monitoring

Once the Web or Digi Client application has loaded through Internet Explorer, a pop-up window will appear. Log in as:

- Username: admin
- Password: 00000000 (may be different if the default system password on your DVR was changed)

Login	
ID	admin
Password	*
OK	Cancel

The Web Client or Digi Client software will load once the Login has been completed successfully. Failure to login correctly will close the Web Client window.



Digi Client - Main Window



NOTE: Third party Internet Explorer toolbars (such as Google or Yahoo toolbars) may interfere with screen display. Please disable or uninstall these toolbars prior to use.

1. **Channels Window** - Displays Active Cameras. Inactive cameras or unavailable channels will be displayed in blue.
2. **Detail Tabs** - Displays system information (Logs, Events, System Info. and Status).
3. **Remote/Local Controls** - Controls the playback of events at the remote or local level.
4. **Save Controls** - Saves images and recordings to the local PC.
5. **Live** - Indicates whether the currently displayed images are Live or previously recorded.
6. **Disconnect** - Exits the Web Client Software.
7. **Pan/Tilt/Zoom** - Controls for Pan/Tilt/Zoom enabled cameras.
8. **Display Options** - Changes the view of the currently displayed cameras (1, 4, 8, 9 or 16).
9. **Connect Button** - Reconnect to the DVR (if the connection is lost).
10. **Setup** - Controls features for the Remote DVR or Local PC, and Firmware Updates
11. **Channel Buttons** - Displays individual channels.
12. **Date / Time** - Displays the Date and Time of the local PC.



Channels Window

Displays all Active Cameras. Inactive cameras or unavailable channels will be displayed in blue. An individual camera can be loaded into full screen mode by double clicking on a selected channel.

NOTE: Windows can be dragged-and-dropped anywhere within the Multi-view screen mode.



Detail Tabs

Displays system information:

- Log** - Shows login, logout and connection details.
- Event** - Displays camera event messages: Motion, Alarm, Sensor and Video Loss.

Log	Event	Info	Status
06:27:2006	12:42:06	remote login	admin 216.234.45.2
06:27:2006	12:41:42	remote logout	admin 192.168.0.103
06:27:2006	12:38:33	remote logout	216.234.45.2

NOTE: Double clicking on a MOTION event will display a list of all events, and double clicking on an event will start the playback of the previously recorded video.

Log	Event	Info	Status
06:22:2006	12:44:02	motion	system 01
06:22:2006	12:43:15	motion	system 01
06:22:2006	12:39:45	motion	system 01



- Info** - Displays system information retrieved from the DVR.
- Status** - Indicates the status of the DVR and Cameras.

Log	Event	Info	Status
Free Disk Space : 148 Gbytes (99)			
FPGA version : 200511211240			
APPI version : 200606071546			

Log	Event	Info	Status

Remote/Local Controls

Controls the playback of events at the remote or local level.



- System** - Indicates that Remote DVR is the current Client. All buttons are controlling the remote DVR.
- Local** - Indicates that the Local PC is the current Client. All buttons are controlling functions on the local PC.
- Volume** - Controls the volume of the DVR unit.



Remote/Local Controls

System



- Playback Buttons** - Controls the recording and playback of cameras at the Remote DVR. All recording takes place on the DVR, and playback is retrieved from the DVR to the local PC.
- Recording** - Pressing the REC Button starts recording on the remote DVR, and pressing the REC button a second time stops the recording. The system password will need to be provided to stop the Recording.
- Playback** - Plays back previously recorded events from the DVR.

- Pressing the PLAY Button opens the Event Search window. Select a Start Time and End Time, and click OK.

Start Time	8/ 4/2005	2:15:04 PM	OK
End Time	9/28/2005	2:09:28 PM	Cancel

- Select an event from the Playback list, and click the START button to begin the playback.
- Once the playback begins on the Web Client, additional control buttons become act

-  STEP BACK
-  REVERSE
-  PAUSE
-  STOP
-  STEP FORWARD

Playback - Start Time				
158	2005	9	28	08:48:50 - 09:17:37
159	2005	9	28	09:17:37 - 09:44:07
160	2005	9	28	09:44:07 - 10:04:52
161	2005	9	28	10:41:37 - 10:42:25
162	2005	9	28	10:42:39 - 10:43:25
163	2005	9	28	10:44:15 - 10:44:29
164	2005	9	28	10:45:04 - 10:50:45
165	2005	9	28	10:51:23 - 10:53:44
166	2005	9	28	12:03:03 - 12:03:07
167	2005	9	28	12:03:24 - 12:19:00
168	2005	9	28	12:33:23 - 12:49:15
169	2005	9	28	12:49:15 - 13:17:58
170	2005	9	28	13:17:58 - 13:43:15
171	2005	9	28	13:43:15 - 13:51:24
172	2005	9	28	13:51:35 - 14:09:28

Start Time	Selected Time	End Time
13:51:35	13:51:35	14:09:28



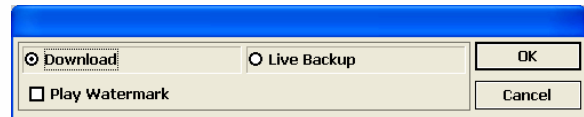
Remote/Local Controls

Local

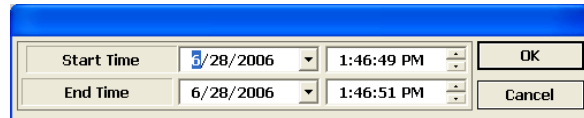


- Playback Buttons** - Controls the recording and playback of Remote cameras to the Local PC. All recording and playback takes place on the PC.
- Recording** - Pressing the REC Button starts recording from the remote DVR to the local PC.
- Playback** - Plays back previously recorded events (recorded to the PC).

- Pressing the PLAY Button opens the Event Search window. Select options (Download or Live Backup) and press OK.

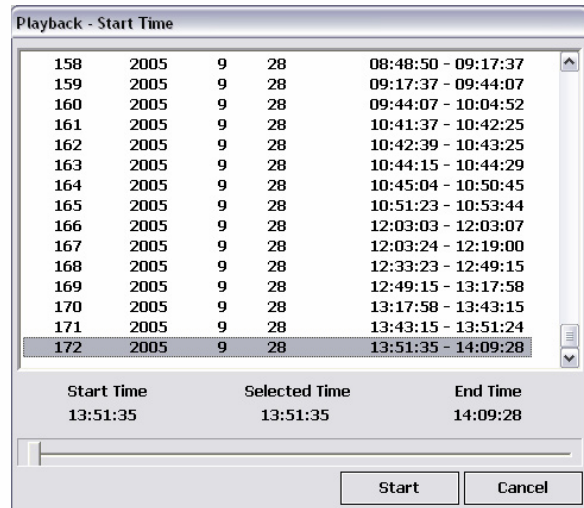


- Select a Start and End Time, and press OK



- Select an Event from the list, and press Start
- Once the playback begins on the Web Client, additional control buttons become active

- STEP BACK
- REVERSE
- PAUSE
- STOP
- STEP FORWARD





Save Controls

Saves images and recordings to the local PC.



Download

Save

View Saved Images

1. **Download** - Retrieves previously recorded data from the DVR Hard Drive, and makes a local PC copy. After the Download button has been selected, a Start / End Time selection window appears to select a date and time range for download. Options within the Advanced options allow for specific channels to be retrieved (all channels are retrieved by default).

Start Time	6/22/2006	2:42:35 PM	OK
End Time	6/28/2006	1:49:43 PM	Advanced
			Cancel

1	2006	6	22	14:42:35 - 15:22:54
2	2006	6	22	15:23:15 - 15:47:05
3	2006	6	22	15:47:05 - 16:49:22
4	2006	6	28	13:49:42 - 13:49:43

Start Time	Selected Time	End Time
14:42:35	14:42:36	15:22:54

Start Time	Selected Time	End Time
15:47:05	16:49:21	16:49:22

Choose a Start Time and an End time to retrieve. The data will be downloaded to the C:\DGClient\Download directory.

2. **Save** - Saves an copy of the onscreen images to JPG to the C:\DGClient\Saved directory. A window will appear once the successful copying has been completed.

Image saving

Image saved!

OK

3. **View Saved Images** - Opens the directory listing of all saved JPG images. Double clicking on an Image file will open the file in the Web Client.



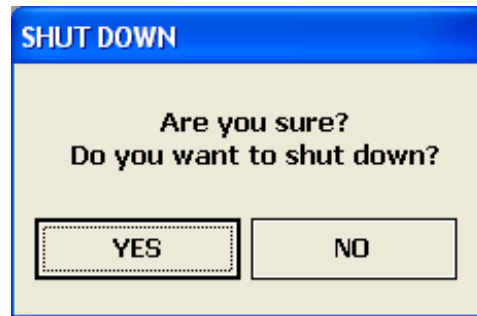
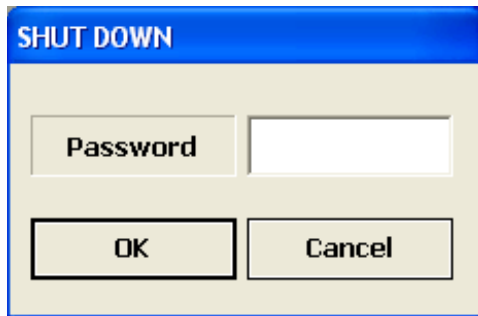
Live

Indicates whether the currently displayed images are Live or previously recorded.

Disconnect



Clicking on the QUIT button will exit the Web Client Software. A prompt will appear to provide the password, and a confirmation window will appear. Clicking YES will exit the software.



Pan/Tilt/Zoom

Controls for Pan/Tilt/Zoom enabled cameras.

- Pan/Tilt/Zoom/Focus/OSD Controls
- Panning Controls (Left, Right, Up and Down)
- Alert Indicators (Alarm, Motion and Video Loss)
- Reset all Events



1. **Pan/Tilt** - Controls the Pan and Tilt of PTZ enabled cameras (not available on the 4 channel model).
2. **Zoom/Focus** - Controls the Zoom and Focus of PTZ enabled cameras (not available on the 4 channel model).
3. **OSD** - Turns the On Screen Display of Channel details ON/OFF





Display Options

Changes the view of the currently displayed cameras (Full, 4, 8, 9 or 16 Camera Display).



Connect Button

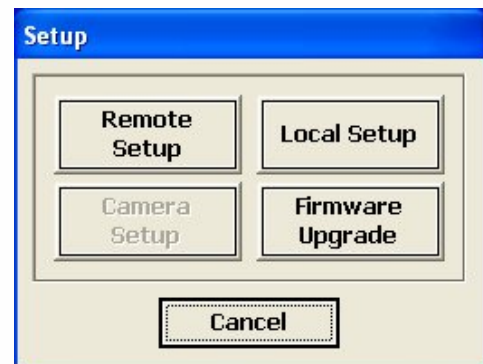
Reconnects to the DVR (if the connection is lost). Clicking on the Connect button will open the Login screen to enter the Username and Password.



Setup

Controls features for the Remote DVR or Local PC

1. **Remote Setup** - Setup and Configuration on the remote DVR
2. **Local Setup** - Setup and Configuration on the local Web Client
3. **Firmware Upgrade** - Use the local PC Web Client to update the Remote DVR Firmware.



Remote Setup

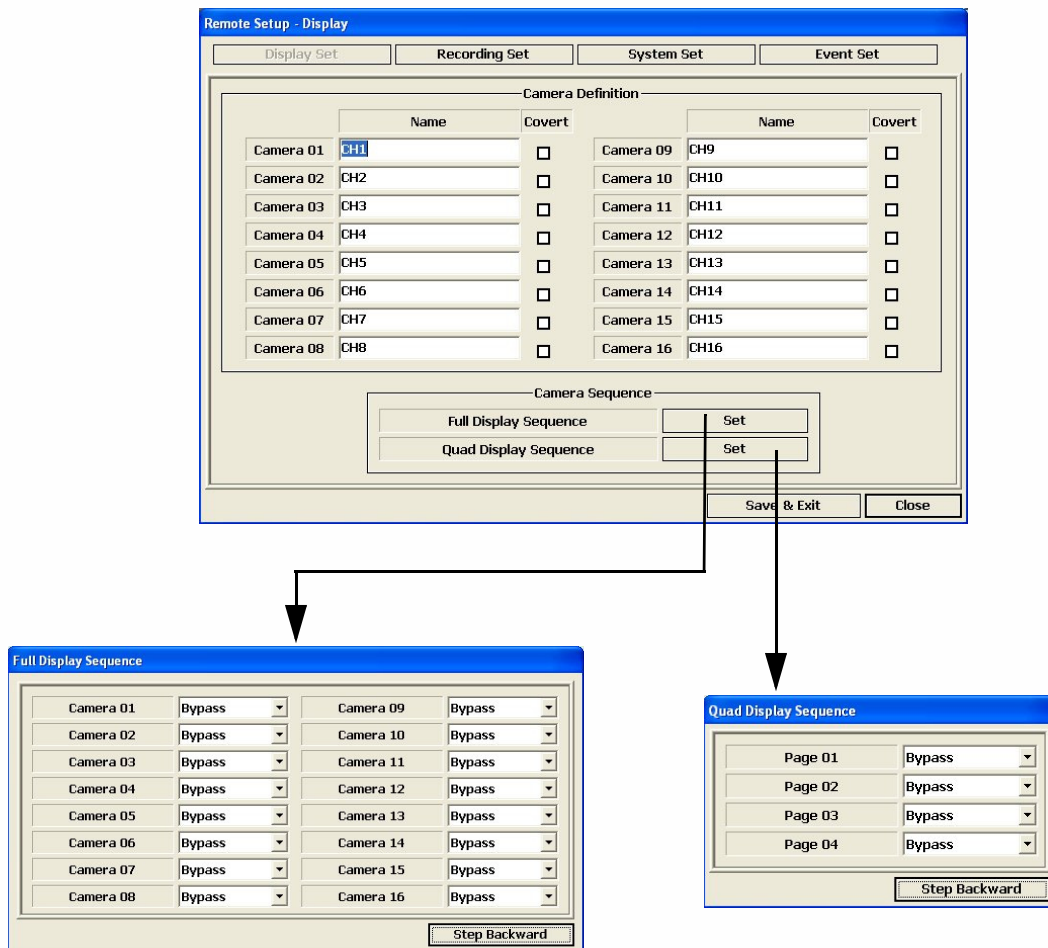
Changes made to the Remote Setup will adjust the settings on the Remote DVR. The setup controls 4 different aspects of the DVR:

- Display Setup
- Recording Setup
- System Setup
- Event Setup



1. Display Set

- **Camera Definition** - Assign names to all detected Cameras
- **Full Display Sequence Submenu** - Configures the display sequence for all available cameras. Any camera set to Bypass will not be displayed in DVR Sequencing mode.
- **QUAD Display Sequence Submenu** - Configures the QUAD display sequence for all available cameras. Any page (contains 4 cameras) set to Bypass will not be displayed in DVR QUAD Sequencing mode.
- **Camera Covert** - Turns Camera display ON/OFF The DVR unit will continue to record, even if all cameras are set to OFF.

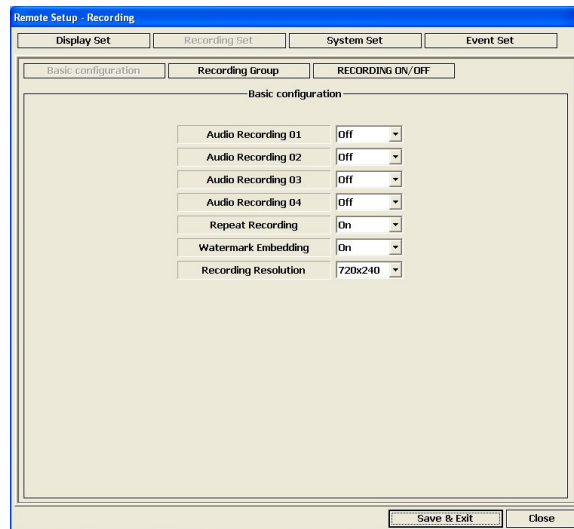




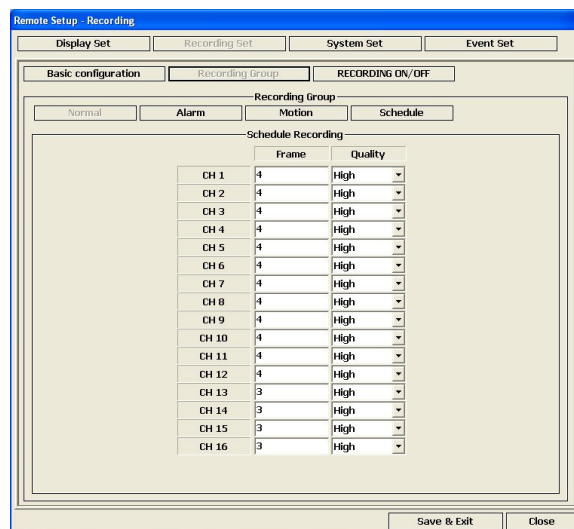
2. Recording Set

The Recording Set option controls 3 subgroups - Basic Configuration, Recording Group and Recording ON/OFF.

- **Basic Configuration** - Controls some of the basic functions of the DVR:
 - Audio Recording: Turns the recording for audio channels ON or OFF.
 - Repeat Recording: Sets recording repeat to ON or OFF (i.e. Overwrite options).
 - Watermark Embedding: Embeds a watermark into the recording. Set to ON or OFF.
 - Recording Resolution: Changes the recording Resolution.



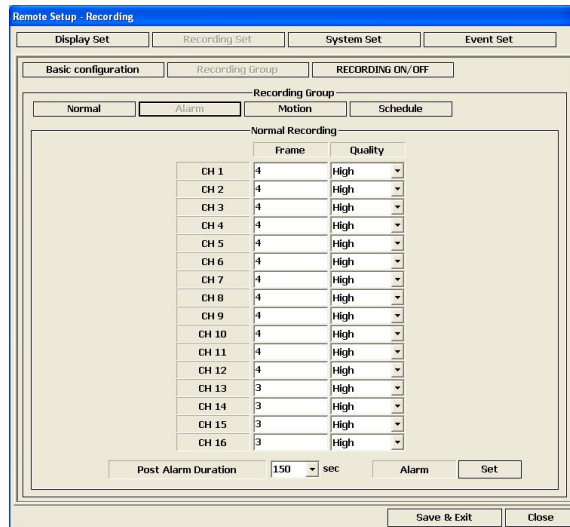
- **Recording Group** - Controls 4 subgroups - Normal, Alarm, Motion and Schedule.
 - Normal Page: Configures the number of FPS (Frames per Second) and sets the Recording Quality for all available Cameras





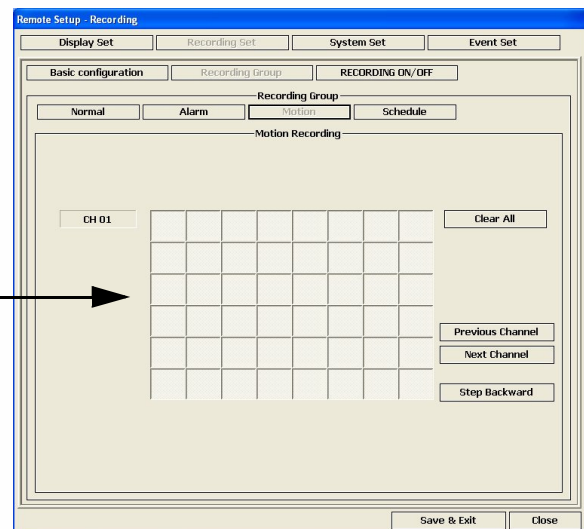
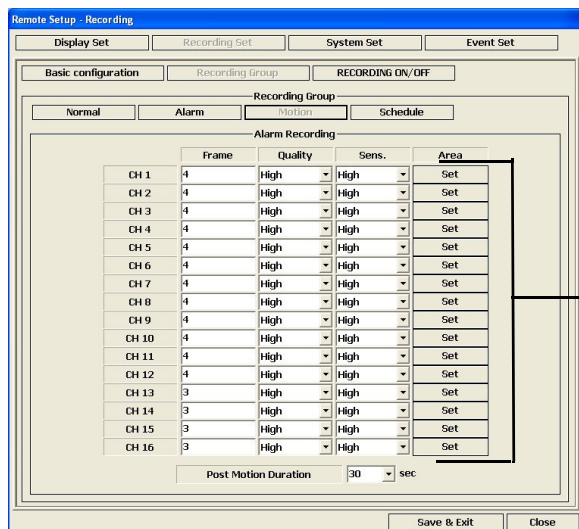
- Alarm Page: Configures the number of FPS (Frames per Second) and sets the Recording Quality for all available Cameras. The Alarm Duration (in seconds) can also be set to a maximum of 150 Seconds.

Use the SET Menu Button to turn Alarm Recording ON or OFF for each available camera.



- Motion Page: Configures the number of FPS (Frames per Second), Recording Quality and Sensitivity for all available Cameras

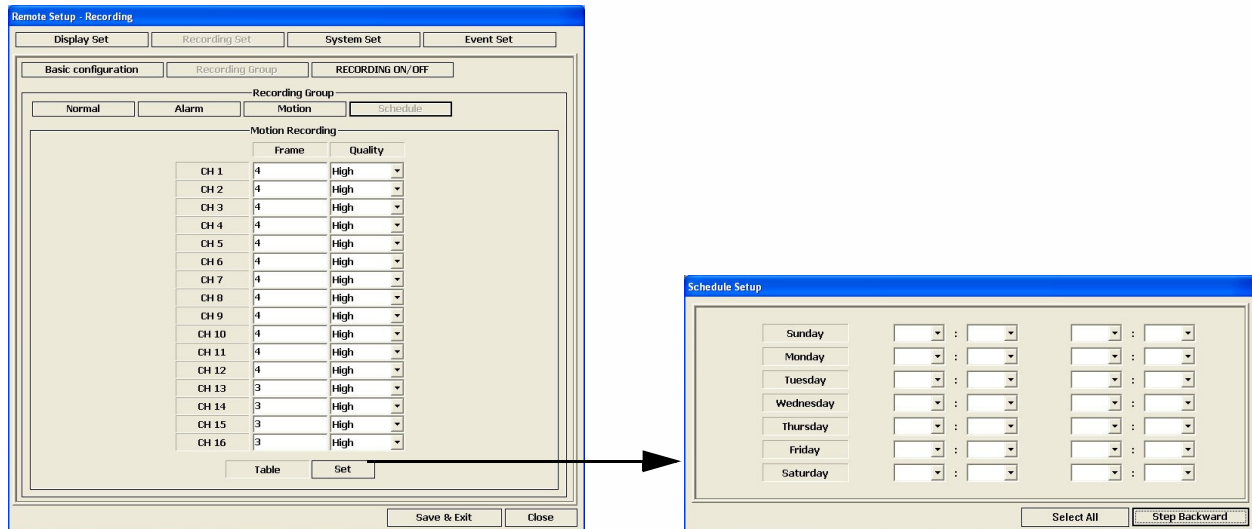
Use the SET Menu Button to set up the Motion Detection Area for each available camera.



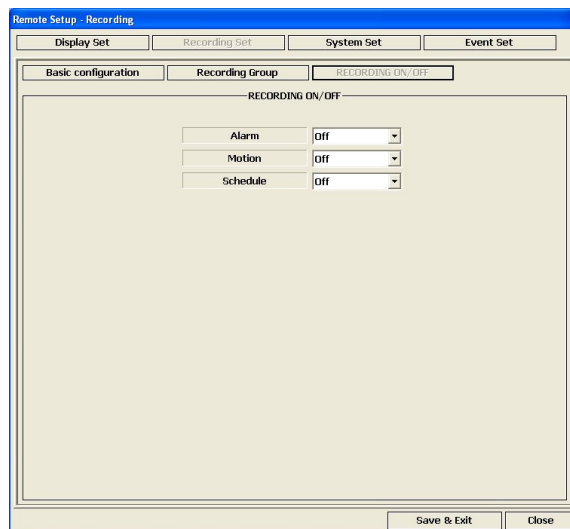


- Schedule Page: Configures the number of FPS (Frames per Second) and sets the Recording Quality for all available Cameras

Use the SET Menu Button to set up the Motion Detection Area for each available camera.



- **Recording ON/OFF** - Sets Recording for Alarm, Motion and Schedule to ON or OFF.





3. System Set

The System Set controls some of the general functionality of the remote DVR:

- **User Accounts** - Add up to 5 user accounts for remote access to the DVR unit.
- **PTZ Camera Model Setup** - Configuration for PTZ enabled cameras.
- **Sensor IN Setup** - Configuration for any external sensor devices connected to the remote DVR (such as Door or Window Sensors) to a maximum of 4.
- **Alarm OUT Setup** - Configuration for Alarm type devices (maximum of 4).
- **Auto Delete Mode** - Sets the time period for Auto Delete (how long the DVR unit will retain recorded video data). This dropdown can be set between 0 Days to 99 Days, or to None.
- **PTZ Controller** - Settings for the PTZ Controller
 - **ID:** Set the ID Dropdown between 1 and 6,
 - **PTZ Model:** Only option available is TB-CN SERIES
 - **Baud Rate:** Set to 2400, 4800 or 9600

Remote Setup - System

Display Set | Recording Set | System Set | Event Set

User Account

ID	Add
User 1	Set
	Del
User 2	Set
	Del
User 3	Set
	Del
User 4	Set
	Del
User 5	Set
	Del

PTZ Camera Model

DVR CH No. 1
ID Off
Protocol PELCO-P
Baud Rate 2400 bps

Sensor In

Sensor 1 None
Sensor 2 None
Sensor 3 None
Sensor 4 None

Alarm Out

Buzzer
Alarm 1 Off
Alarm 2
Alarm 3
Alarm 4

Auto Delete Mode

Period None days

PTZ Controller

ID Off
PTZ Model TB-CN SERIES
Baud Rate 9600 bps

Save & Exit | Close



4. Event Set

The Event Set controls event related reporting and alerts:

- **Email Registration** - Add email addresses for automatic event alerts.
- **Email Report** - Configuration for Alert Reporting to email by Day, Time, and when the email should be sent (i.e. immediately)
- **Notification Out** - Sets the Alert Type (Beep, Email or Alarm) to YES or NO for Alarm, Motion, Video Loss and Power Loss. Also sets the duration for the alarm.

The screenshot shows the 'Remote Setup - Event' window. It has four tabs: 'Display Set', 'Recording Set', 'System Set', and 'Event Set'. The 'Event Set' tab is selected. The window is divided into three main sections:

- E-mail Registration:** A text field containing 'YOURNAME@EMAILHOST.COM' and an empty field below it.
- E-mail Report:** A grid of dropdown menus for days of the week (Monday, Tuesday, Wednesday, Thursday, Friday, Saturday, Sunday, Holiday) and a 'Time' field set to '1:56:59 PM' with an 'Immediately' dropdown below it.
- Notification Out:** A table of settings for different event types:

	Beep	E-mail	Alarm
Alarm	No	No	No
Motion	No	No	No
Video Loss	No	No	No
Power Loss	No	No	No

 Below this table is a 'Duration' field set to '5'.

At the bottom right, there are 'Save & Exit' and 'Close' buttons.

Local Setup

Configuration settings for the Local PC.

- **Draw Mode:** Select the color format (YUV or RGB).
- **Date Format:** Specifies the date format to be displayed on the image (yyyy-mm-dd, mm-dd-yyyy or dd-mm-yyyy).
- **Save Format:** Specifies the file format for the saved image (JPG or BMP)
- **OSD:** Specifies what information will appear on the On Screen Display (Channel, Size, Speed, Frame Rate and Mode).
- **Location:** The installation directory for the Web Client software

The screenshot shows the 'Local Setup' window. It has several sections:

- Draw Mode:** Radio buttons for 'YUV' (selected) and 'RGB'.
- Date Format:** Radio buttons for 'yyyy-mm-dd', 'mm-dd-yyyy' (selected), and 'dd-mm-yyyy'.
- Save Format:** Radio buttons for 'JPEG' (selected) and 'BMP'.
- OSD:** Checkboxes for 'CH', 'Size', 'Speed', 'Frame Rate', and 'Mode', all of which are checked.
- Location:** A text field containing 'C:\DGClient' and a 'Find' button.

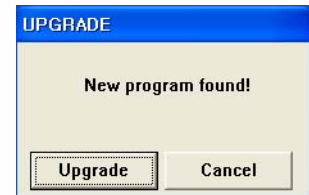
At the bottom, there are 'Save & Exit' and 'Cancel' buttons.



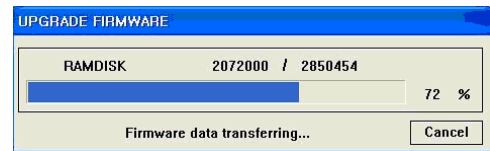
Firmware Upgrade

The firmware on the remote DVR unit can be updated through the web client.

1. Download the most recent firmware from the Digimerge website, and place the downloaded file in the C:\DGClient\Upgrade folder on the PC
2. Select the Firmware Upgrade option from the Setup Menu. IF the new firmware is detected, an Upgrade dialogue box will appear. Select the Upgrade button.



3. A status indicator window appears during the upgrade process.



4. Once the update has completed, a success window will appear. Press OK to the Upgrade window, and reboot the remote DVR unit.



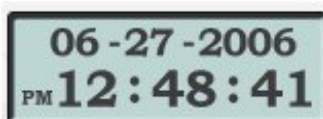
Channel Buttons

Displays individual channels when selected.



Date / Time

Displays the Date and Time of the local PC.



Limited Warranty

Warranty: Subject to the exclusions and limitations below, Digimerge warrants to the initial end-user purchaser that the product will be free from defects in material and workmanship for a period of one year from the date of purchase. **Effective September 1, 2006: For all purchases after September 1, 2006, Digimerge warrants that the hard drive(s) will be free from defects in material and workmanship for a period of three years from the date of purchase.** For valid warranty claims made during the warranty period, upon proof of purchase, defective products will, at the election of Digimerge, be repaired or replaced without charge. Any products repaired or replaced within the warranty period, shall be warranted by Digimerge to the initial end-user purchaser for 90 days from the return shipment date, or the remainder of the warranty term, whichever is longer, and if outside of the warranty period then for 90 days from the return shipment date. Products and parts may be replaced with refurbished items, and the products and parts replaced become the property of Digimerge. You are responsible for all shipping costs associated with the return of the defective products for warranty service.

Exclusions and Limitations: Any of the following will void this warranty:

- I. Installation or use of the product other than strictly in accordance with the instructions contained in the product's instruction manual;
- II. If the product is subjected to operating conditions (including atmospheric, moisture and humidity conditions) outside of the acceptable conditions specified in the product's instruction manual;
- III. If the product is subjected to misuse or abuse;
- IV. If the product is subjected to electrical short circuits or transients, accident, fire, flood or Acts of God;
- V. Adjustment, maintenance or repair of the product other than in accordance with Digimerge approved procedures; and
- VI. Use of replacement parts other than those specified by Digimerge.

DIGIMERGE MAKES NO CLAIMS OR WARRANTIES OF ANY KIND WHATSOEVER REGARDING THE PRODUCT'S ABILITY OR EFFECTIVENESS IN PREVENTING OR REDUCING THE RISK OF, OR DAMAGES RESULTING FROM, LOSS OR THEFT OF PROPERTY OR PERSONAL INJURY. THIS LIMITED WARRANTY IS IN LIEU OF ALL OTHER WARRANTIES, EXPRESS OR IMPLIED, INCLUDING, BUT NOT LIMITED TO, ANY IMPLIED WARRANTY OF MERCHANTABILITY OR FITNESS FOR A PARTICULAR USE OR PURPOSE. REPAIR OR REPLACEMENT AS PROVIDED UNDER THIS LIMITED WARRANTY IS THE EXCLUSIVE REMEDY OF THE PURCHASER. DIGIMERGE SHALL IN NO EVENT BE LIABLE FOR ANY SPECIAL, INDIRECT, INCIDENTAL, PUNITIVE, OR CONSEQUENTIAL DAMAGES OF ANY KIND OR CHARACTER, INCLUDING, WITHOUT LIMITATION, PERSONAL INJURY, LOSS OF REVENUE OR PROFITS, FAILURE TO REALIZE SAVINGS OR OTHER BENEFITS, OR CLAIMS AGAINST THE PURCHASER BY ANY THIRD PERSON, EVEN IF DIGIMERGE HAS BEEN ADVISED OF THE POSSIBILITY OF SUCH DAMAGES.

No claims or statements regarding the product, whether written or verbal, by salespeople, retailers, dealers or distributors, that are not contained in this limited warranty or in the owner's manual are authorized by Digimerge and do not modify or expand this warranty. Some countries, states, or provinces do not allow the exclusion or limitation of implied warranties or the limitation of incidental or consequential damages for certain products supplied to consumers or the limitation of liability for personal injury. To the extent that such restrictions on limitations apply to the products, the above limitations and exclusions may be limited in their application. In that case, when the implied warranties are not allowed to be excluded in their entirety, they will be limited to the duration of the applicable written warranty, and if damages may not be limited then the above limitations on damages apply, but only to the greatest extent permitted by local law.

Warranty and Non-Warranty Service: Contact the dealer that sold you this product, during the warranty period if applicable, to obtain service. Non-warranty service is subject to the then current Digimerge service terms and prices. If the dealer fails to respond, cannot be reached or fails to provide you with the required service, you may obtain service directly from Digimerge by calling our service department at (866) 344-4674. You must provide Digimerge with the defective product's model number, serial number, date of purchase, sales or invoice number, proof that you were the original end-user purchaser for warranty work, and a brief description of the problem. You must obtain a return authorization number from the service department and must mark the number clearly on the shipping box. You must ship the item prepaid in appropriate packaging to the following address:

**Digimerge Technologies Inc.,
Attention: Repair Department,
300 Alden Rd,
Markham, Ontario, Canada,
L3R 4C1**

OR

For a depot nearest you, please view our website at <http://www.Digimerge.com> and click on the Technical Support link.

It's all on the web

 **Product Information**

 **Specification Sheets**

 **User Manuals**

 **Software Upgrades**

 **Quick Start Guides**

 **Firmware Upgrades**



VISIT
www.digimerge.com

www.digimerge.com

Digimerge Technologies Inc.

Free Manuals Download Website

<http://myh66.com>

<http://usermanuals.us>

<http://www.somanuals.com>

<http://www.4manuals.cc>

<http://www.manual-lib.com>

<http://www.404manual.com>

<http://www.luxmanual.com>

<http://aubethermostatmanual.com>

Golf course search by state

<http://golfingnear.com>

Email search by domain

<http://emailbydomain.com>

Auto manuals search

<http://auto.somanuals.com>

TV manuals search

<http://tv.somanuals.com>