

20" WIDE SCREEN LCD MONITOR WITH BUILT-IN DIGITAL VIDEO RECORDER

Frequently Asked Questions

Version: 080718-01



**MODEL:
L20WD800**



www.lorexctv.com

Copyright © 2008 Lorex Technology Inc.

Table of Contents

What are the features?	Error! Bookmark not defined.
What is included in the box?	3
How do I Startup / Shutdown the system?	4
What do the buttons and connectors on the monitor mean?	5
How do I connect DIN cameras to the system?	6
How do you connect BNC cameras to the system?	7
What is DVR Mode and how do I use it?	8
How do I use the Remote in DVR Mode?	9
How do I use the On-Screen Display Menu?	10
What do the icons on the System Display mean?	11
What are the Display Modes, and how do I use them?	12
What is PIP and how do I use it?	13
What is DVR Mode?	16
How do I access DVR Mode?	16
What is VGA Mode?	17
How do I access and use VGA Mode?	18
What is Component Mode?	19
How do I access and use Component Mode?	20
What is Picture Frame Mode?	21
How do I access and use Picture Frame Mode?	22
What is Installation Guide Mode?	23
How do I access Installation Guide Mode?	23

What is included in the box?

The system comes with the following components:



LCD MONITOR & DVR COMBO UNIT



POWER ADAPTER



MOUSE



CLEANING CLOTH



MANUALS, QUICK START
GUIDE & SOFTWARE CD



REMOTE CONTROL



ETHERNET
CABLE

*** HARD DRIVE SIZE AND CAMERAS VARY BY SPECIFIC MODEL. PLEASE REFER TO YOUR PACKAGE FOR CONTENT DETAILS.**

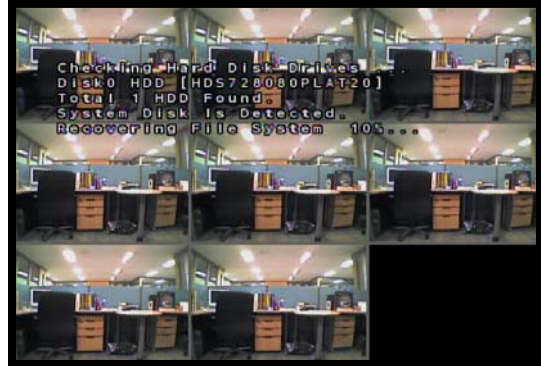
CHECK YOUR PACKAGE TO CONFIRM THAT YOU HAVE RECEIVED THE COMPLETE SYSTEM, INCLUDING ALL COMPONENTS SHOWN ABOVE.

How do I Startup / Shutdown the system?

System Loading Sequence

- Press the POWER button located on the front panel of the System to start the unit, or press the Power Button on the Remote Control.
- The System will perform a Hard Drive check

The unit will initially load to a split screen view, displaying all channels (if available). Empty channels will be displayed in Blue.



NOTE: If a new **HARD DRIVE** is detected, the system will prompt you to **FORMAT** the drive. If you do not choose to format the HARD DRIVE, the drive will not be detected by the system.

If you choose to **FORMAT** a drive in this way, the drive will no longer be readable by a regular PC without using the **HARD DRIVE VIEWER** software included on the CD provided with this unit. Please see the Appendices for details on Hard Drive format.

Monitor Display Shutoff

- Press the Power Button on the front panel or remote control for one second to turn off the monitor only.
- The System will continue to record while the monitor is off.
- The LED indicators on the front of the System will remain ON.
- The monitor shutoff can be automatically set using the Screen Saver settings in the System Menu.

System Shutdown

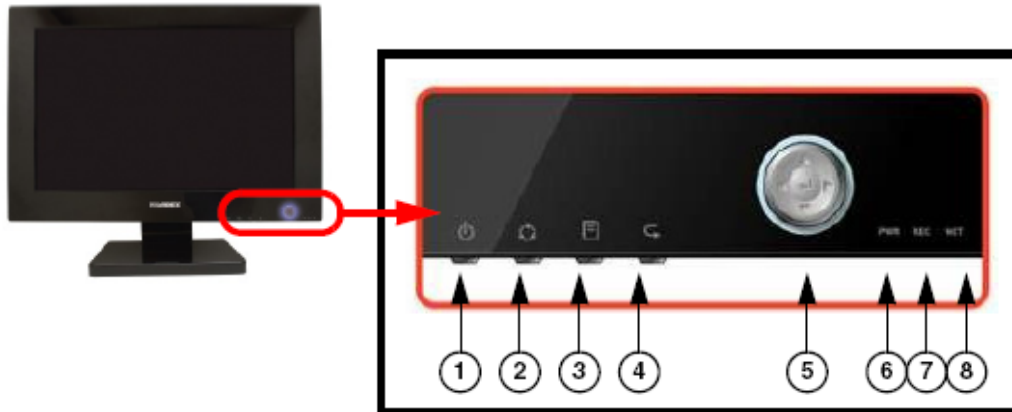
- Press and hold the Power Button on the front panel or remote control for three seconds to turn off the System, or select Shutdown from the Mouse Menu. Enter the Admin Password (1234 by default).
- Only the ADMIN can turn the unit ON/OFF.
- The System will NOT continue to record while the unit is off.
- The LED indicators on the front of the System will be OFF.



System Shutdown Prompt

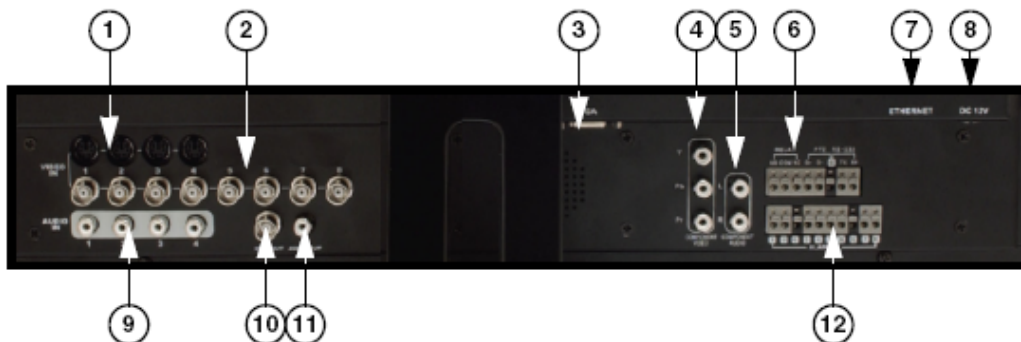
What do the buttons and connectors on the monitor mean?

Front Panel



1. System Power Button	2. Multi-Function Modes	3. Setup Menu	4. Return Button
5. Navigation & Enter	6. Power LED	6. Recording LED	8. Network Connection LED

Rear Panel



1. DIN Video Inputs	2. BNC Video Inputs	3. VGA IN Port	4. Component Video IN
5. Component Audio IN	6. Relay / PTZ / RS-232	7. Ethernet	8. Power (DC 12V)
9. Audio Inputs	10. Spot Out	11. Audio Out	12. Alarm Block

Side Panel - USB Ports

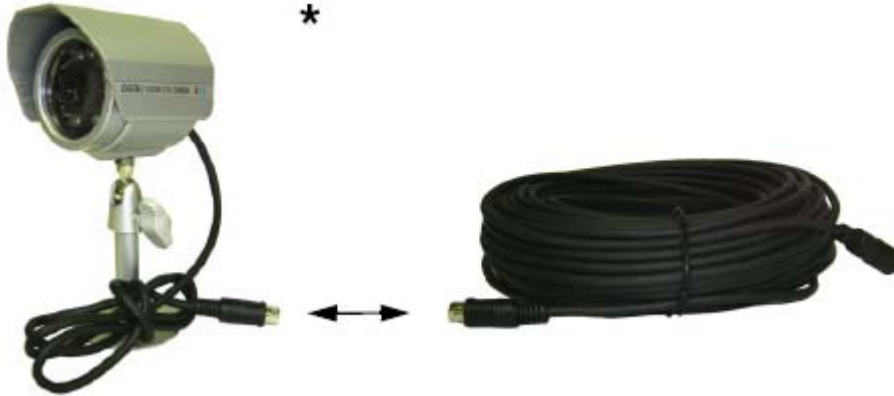
The USB Ports provide a connection point for a USB PC Mouse, USB Flash Drives (thumbsticks) and USB Hard Drives.

- Use a Mouse for navigating in DVR and Picture Frame modes.
- Connect a USB Thumbstick or USB Hard Drive or Optical Drive (CD-RW/DVD-RW) for system Archive Backup.
- Add jpg pictures to a USB Thumbstick to use the Monitor as a Picture Frame display.



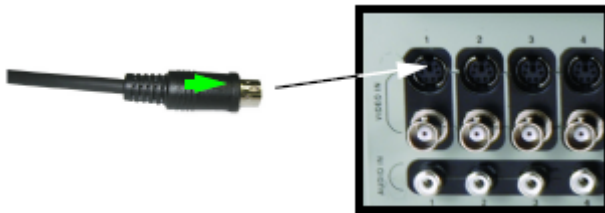
How do I connect DIN cameras to the system?

1. Connect the female end of the supplied DIN extension cable to the camera.



NOTE: Confirm that the arrows on the DIN Camera Cable and the DIN Extension cable are pointed together when connecting the cable. If the pins in the DIN Cable are bent, the Camera will NOT function.

2. Connect the male end of the supplied DIN extension cable to an open DIN camera input on the back of the System. Continue connecting additional DIN cameras.



NOTE: The arrow on the DIN Camera should be facing up when connecting the DIN Extension Cable to the System. * Camera Model may not be exactly as shown.

* Camera Model may not be exactly as shown.



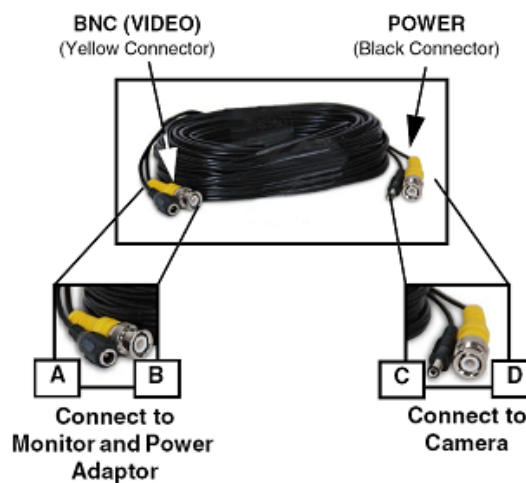
Benefits!

- *Easy installation*
 - *DIN cameras get their power source from the system, so there is no need for a power adaptor.*

How do you connect BNC cameras to the system?

1. Connect the Extension cable to the Camera and System:

- A. Connect the Barrel Power connector to a power adaptor.
- B. Connect the BNC connector to an available BNC Port of the System.
- C. Connect the Male Power connector to the Camera.
- D. Connect the BNC connector to the Camera.



2. Connect the Power Adaptor to a wall outlet.

IMPORTANT NOTE: The ends of the extension cable are NOT the same - one end has a Male power port, and the other has a Female power port. Before permanently running the Camera Extension Cable, make sure that the cable has been oriented between the Camera and the unit correctly.

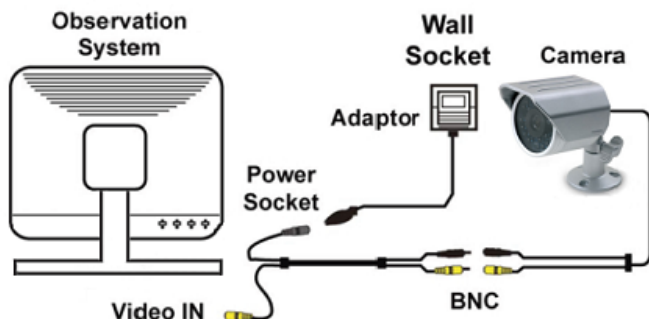


Male Power Port - The male power port end of the Extension cable connects to the Camera.



Female Power Port - The female power port end of the Extension cable connects to the Power Adaptor.

Camera Connection Diagram



What is DVR Mode and how do I use it?

DVR Mode is the primary mode for the System, and is displayed when the system is powered on. In DVR Mode, the system performs the following functions:

- View and Record live video channels in Single, Quad, Multi-Display or Sequence Mode.
- Customize the recording on up to 8 camera channels in continuous, motion or alarm recording modes.
- Archive data to USB Thumbstick, USB Hard Drive, CDRW/DVD-RW or Network Storage through FTP.
- Search through Previously Recorded Events
- Customize the Display, Cameras and System to best suit your security needs through the user friendly System Menu GUI (Graphical User Interface).



NOTE: The DVR will continue to record independently of the current Monitor Mode.

To return to DVR Mode (from any other Mode):

Front Panel:

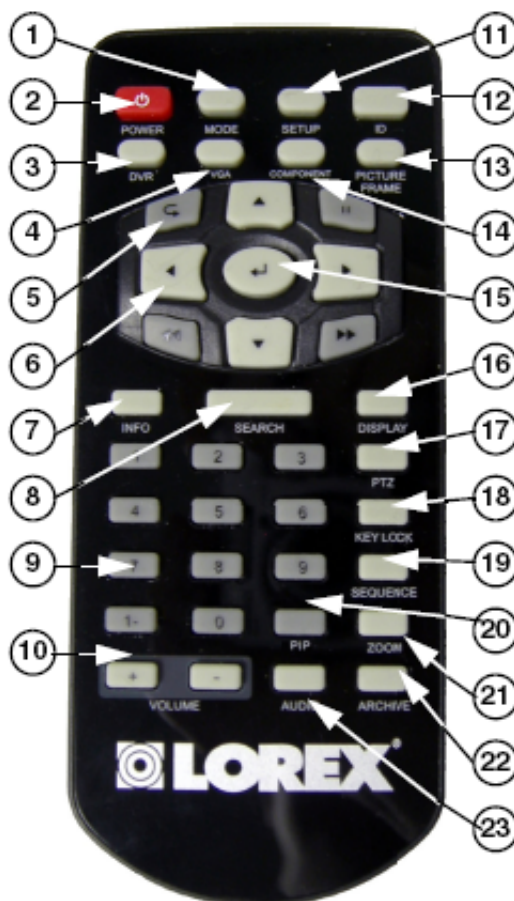
1. Press the Multi-Function Mode Button on the Front Panel.
2. Use the Up and Down arrows on the Navigation Control to select DVR.
3. Press the Enter button on the Navigation Control to switch to DVR Mode.

Remote:

1. Press the DVR Button on the Remote Control -or-
2. Press the Mode button on the Remote Control. Use the arrows to select DVR, and press the Enter button.

How do I use the Remote in DVR Mode?

1. **MODE:** Press the Mode Button to display the Multi-Function Mode Menu.
2. **POWER:** Press the Power Button to turn off the Monitor Display. Press and hold the button for 3 seconds to shut down the entire system.
3. **DVR:** Change to DVR Mode.
4. **VGA:** Change to VGA Mode.
5. **RETURN:** Exits from a System Menu.
6. **NAVIGATION/PLAYBACK:** Press the Navigation Controls to move Up, Down, Left or Right in System and Mode menus. Use the Playback controls to Pause, Play, Reverse or Fast-forward the Playback in DVR Mode.
7. **INFO:** Displays the System Information in DVR Mode.
8. **SEARCH BUTTON:** Displays the Video Playback Search menu.
9. **NUMBER KEYPAD:** Use to switch between Cameras in live view mode.
10. **VOL +/-:** Increase or Decrease the volume of the camera currently broadcasting live audio.
11. **DVR SETUP:** Displays the DVR Setup Menu.
12. **REMOTE ID:** Changes the ID for the remote control to match the System ID (if changed). Use the Remote ID when using one remote to control multiple systems). To set the Remote to default, press and hold the Remote ID button for 5 seconds, then select number 1. Press the Enter and Return buttons.
13. **PICTURE FRAME:** Change to Picture Frame Mode.
14. **COMPONENT:** Change to Component Mode.
15. **ENTER BUTTON:** Press the Enter Button to select an option in the System Menu or Multi-Function Menu. Also displays PIP when in camera viewing mode.
16. **DISPLAY:** Switches the display to single, quad and multi-display views.
17. **PTZ:** Switches to PTZ Mode.
18. **KEYLOCK:** Locks all keys (except the Mode button).
19. **SEQUENCE:** Changes the Monitor Display to Sequence through channels (based on menu settings).
20. **PIP:** Displays the Component Input in the PIP Screen in the lower right corner.
21. **ZOOM:** Displays one channel with Digital Zoom.
22. **ARCHIVE:** Displays the Archive menu.
23. **AUDIO CHANNEL SELECT:** Switches between live audio channels (CH1~4 only). Press Audio and select Channel 1~4.



How do I use the On-Screen Display Menu?

The On-Screen Display Menu is accessed by either:

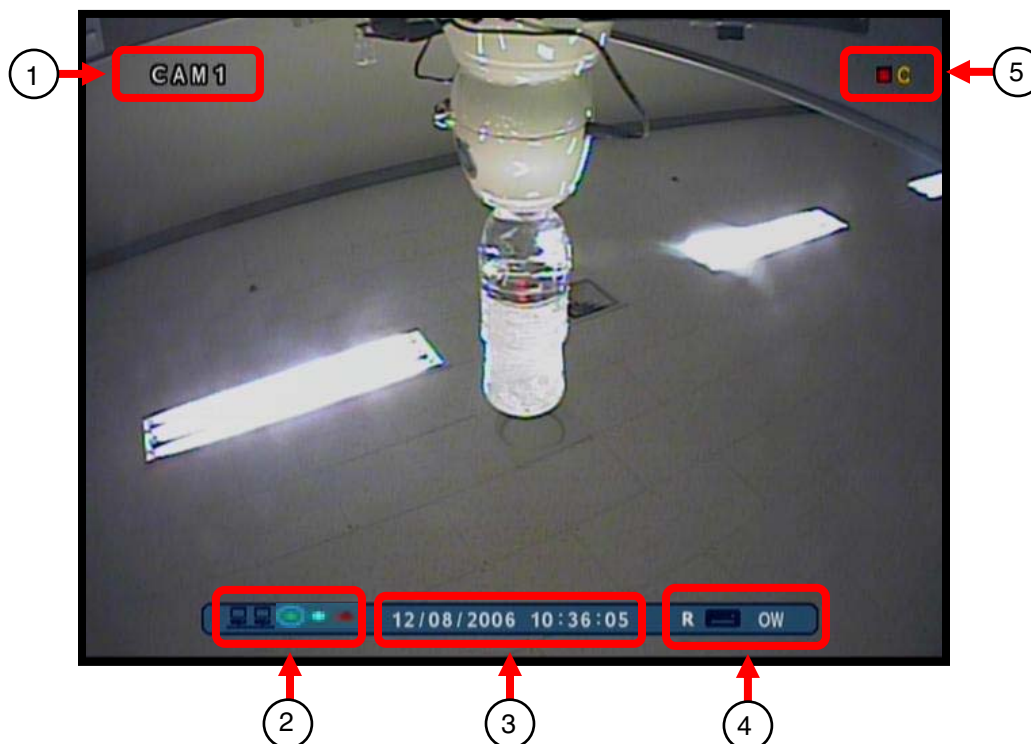
- Pressing the Up or Down Arrows on the Front Panel <OR>
- Right Clicking the Mouse

The Menu options include:

1. **CHANNELS:** Select a Channel Number (1~8) to display a camera in Full Screen Mode.
2. **SETUP:** Displays the System Setup Menu. Please refer to the System Setup section for detailed configuration.
3. **SEARCH:** Allows you to locate previously recorded video by Date and Time, or by Event Type.
4. **PTZ:** Displays the PTZ Control Screen. The PTZ / Focus Menus will only work with PTZ type cameras (not included)
5. **DISPLAY:** Changes the current display mode to Single, Quad, 6-Channel Split, 8-Channel Split or 9-Channel Split screen views.
6. **ARCHIVE:** The Archive feature copies data from the Hard Drive to a USB backup media such as a Memory Stick or USB Hard Drive. See the Archive Menu Section for details.
7. **SEQUENCE:** Selecting the Sequence option switches the live camera view to the Sequence set in the System Menu.
8. **ZOOM:** Displays one channel with Digital Zoom.
9. **KEY LOCK:** Locks all Front Panel and Remote Control buttons (except the Mode change buttons). The password is required to unlock the keys. The System can still enter any other mode while the keys are locked (VGA, Component, Picture Frame or Installation Video modes).
10. **VOLUME:** Adjusts the volume of the System.
11. **PIP:** Select the PIP Button to display the VGA or Component mode in a PIP window. This function could be used to watch a Movie while still monitoring the Live Video display.
12. **SHUTDOWN:** Select the Shutdown option to turn off the System. • Pressing the Up or Down Arrows on the Front Panel • Right Clicking the Mouse



What do the icons on the System Display mean?




1. Camera Title

2. Network Indicators

- Green: Indicates that the network connection is stable.
- Blue: Indicates that the network connection is experiencing difficulties.
- Red: Indicates that the network connection is not strong.

3. Date and Time

4. Hard Drive Recording Settings

- If displaying a % under 100% (example: ) , the drive is not yet full.
- If displaying 100%, the drive is full, and overwrite is OFF.
- If displaying OW, the drive may not be full, however the system is set to Overwrite

(starting from the oldest data) once the drive capacity is reached.

5. Recording Status

- : Record
- : Pre Record
- C : Continuous
- M : Motion
- A : Alarm

What are the Display Modes, and how do I use them?

Cameras can be displayed in several different modes by pressing the Display Button on the Remote Control or Mouse Menu

A Display Selection window will appear onscreen.



Select from the available display types:



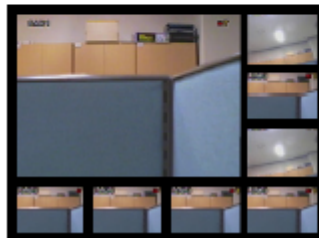
Single Channel



Quad (4) Channel



6 Channel Split View



8 Channel Split View



8 Channel (Grid)



Benefits!

Business:

- Use the 8 Channel Split View to view multiple cameras simultaneously.

Residential:

- Use the Quad (4) Channel to monitor the front door, back door, car port, and garage door.

What is PIP and how do I use it?

PIP means "Picture In Picture".

VGA/Component Mode/Picture Frame: When using the PIP function, the DVR screen is displayed in the PIP Video Display

DVR Mode: When using the PIP function, the VGA or Component screen is displayed in the PIP window (referred to as Reverse PIP).

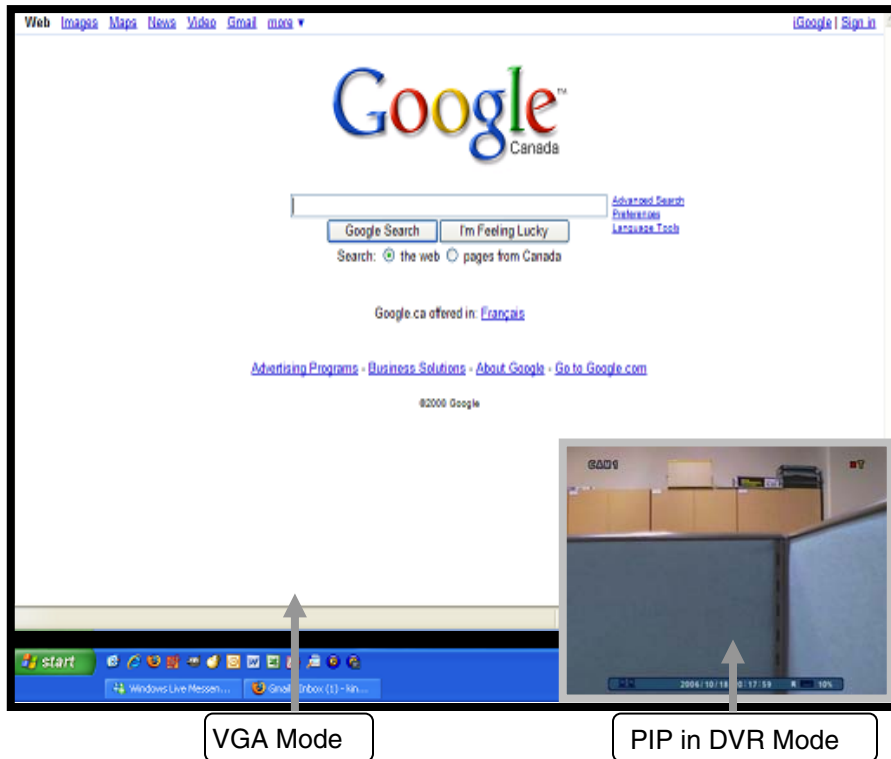
This function could be used to watch a Movie while still monitoring the Live Video display.

1. PIP (VGA, Component, or Picture Frame):

Remote Control (only):

- Click the PIP button once to display the DVR in the PIP window
- Click PIP again to close the PIP window





Note: When in VGA, Component, or Picture Frame Mode, the PIP window will only display DVR Mode.

2. Reverse PIP (DVR Mode)

Mouse :

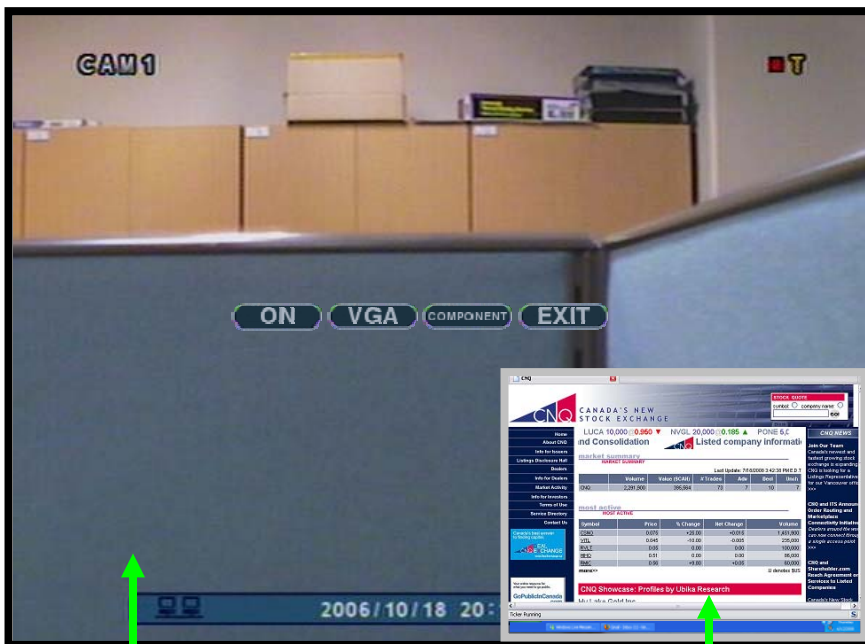
- Right Click the screen
- Select the PIP option
- Select VGA, or Component from the onscreen menu

ON VGA COMPONENT EXIT



Remote Control:

- Push the PIP button once to display the VGA (computer) screen in the PIP
- Push the PIP button again to display the Component (DVD) in PIP
- Push the PIP button again to close the PIP window



DVR Mode

PIP in VGA Mode



Benefits!

Business:

- *Multi-task*
 - *Work on your computer while monitoring your cameras*
 - *Monitor company stocks online*

Residential:

- *Space Saver*
 - *Watch a movie while keeping an eye on your cameras*

What is DVR Mode?

DVR (Digital Video Recorder) Mode is the default mode, and it gives access to the system menus.



How do I access DVR Mode?

To access DVR Mode (from any other Mode):



Front Panel:

1. Press the Multi-Function Mode Button on the Front Panel.
2. Use the Up and Down arrows on the Navigation Control to select DVR.
3. Press the Enter button on the Navigation Control to switch to DVR Mode.



Remote:

1. Press the DVR Button on the Remote Control -or-
2. Press the Mode button on the Remote Control.
3. Use the arrows to select DVR, and press the Enter button.

What is VGA Mode?

VGA Mode is used to display a device (i.e. a Computer) connected to the VGA Port on the monitor.



If you press the PIP button on your remote control, you can view your DVR in a Picture In Picture. This provides you with the ability to view images from your cameras while working on your PC.



Benefits

Business:

- *Disguising the Observation System as a typical computer monitor*
- *Space saver*
 - *Work on your computer while having the system record in the background*

Residential:

- *Use as a large high resolution computer monitor to:*
 - *Surf the internet*
 - *Play video games*
 - *Check and send email*
- *Disguising the Observation System as a typical computer monitor*

How do I access and use VGA Mode?

To access VGA Mode:



Front Panel:

1. Press the Multi-Function Mode Button on the Front Panel.
2. Use the Up and Down arrows on the Navigation Control to select VGA.
3. Press the Enter button on the Navigation Control to switch to VGA Mode.

Remote:

1. Press the VGA Button on the Remote Control -or-
2. Press the Mode button on the Remote Control.
3. Use the arrows to select VGA, and press the Enter button.


How to Use VGA Mode:

1. Connect the PC to the Monitor using a VGA Cable.

NOTE: VGA Cable is not included with the system.

2. Switch the Monitor to VGA mode using the Multifunction Mode button on the front of the Monitor, or by pressing the VGA Button on the Remote Control.

If you press the PIP button on your remote control, you can view your DVR in a Picture In Picture. This provides you with the ability to view images from your cameras while working on your PC.



Benefits

Business:

- *Disguising the Observation System as a typical computer monitor*
- *Space saver*
 - *Work on your computer while having the system record in the background*

Residential:

- *Use as a large high resolution computer monitor to:*
 - *Surf the internet*
 - *Play video games*
 - *Check and send email*
- *Disguising the Observation System as a typical computer monitor*

What is Component Mode?

Component Mode is used to display a device connected to the Component green, blue, and red inputs (Y/Pb/Pr) in high resolution (i.e. DVD Player, Set Top Box, Satellite Receiver) The Audio from the Component Device is connected to the Red and White component audio inputs.



If you press the PIP button on your remote control, you can view your DVR in a Picture In Picture. This provides you with the ability to view images from your cameras while watching a movie.



Benefits

Business:

- Use the DVD to display video about your business
 - (ie.)Eye Doctors Office: New Laser Procedure
 - (ie)Café: Today's specials or a new product
- Disguising the Observation System as a typical TV
- Space saver

Residential:

- Space Saver
 - Replaces the TV display
 - Watch DVD movies or TV shows
- Disguising the Observation System as a typical TV

How do I access and use Component Mode?

To access Component Mode:



Front Panel:

1. Press the Multi-Function Mode Button on the Front Panel.
2. Use the Up and Down arrows on the Navigation Control to select COMPONENT.
3. Press the Enter button on the Navigation Control to switch to COMPONENT Mode.

Remote:

1. Press the COMPONENT Button on the Remote Control -or-
2. Press the Mode button on the Remote Control.
3. Use the arrows to select COMPONENT, and press the Enter button.

How to Use Component Mode (with a DVD player):

1. Connect a DVD Player (not included) to the system using component video cables (not included). Make sure to enable the YPbPr option on your DVD. Refer to your DVD User Manual.
2. Switch the Monitor to Component Mode using the Multifunction Mode button on the front of the Monitor, or by pressing the Component Button on the Remote Control.

If you press the PIP button on your remote control, you can view your DVR in a Picture In Picture. This provides you with the ability to view images from your cameras while watching a movie.



Benefits

Business:

- Use the DVD to display video about your business
 - (ie.)Eye Doctors Office: New Laser Procedure
 - (ie)Café: Today's specials or a new product
- Disguising the Observation System as a typical TV
- Space saver

Residential:

- Space Saver
 - Replaces the TV display
 - Watch DVD movies or TV shows
- Disguising the Observation System as a typical TV

What is Picture Frame Mode?

Picture Frame Mode is used to display JPG images located on a USB Thumbstick (connected to a USB Port on the side of the monitor).



If you press the PIP button on your remote control, you can view your DVR in a Picture In Picture. This provides you with the ability to view images from your cameras while looking at your pictures.



Benefits!

Business:

- *Advertizing*
 - *(ie.)Restaurant: Display a menu with prices*
 - *(ie.)Corner Store: Display this weeks specials*
- *Disguising the Observation System as a regular monitor*
- *Space saver*

Residential:

- *Share family photos*
- *Disguising the Observation System as a Digital Picture Frame*

How do I access and use Picture Frame Mode?

To access Picture Frame Mode:



Front Panel:

1. Press the Multi-Function Mode Button on the Front Panel.
2. Use the Up and Down arrows on the Navigation Control to select PICTURE FRAME.
3. Press the Enter button on the Navigation Control to switch to PICTURE FRAME Mode.

Remote:

1. Press the PICTURE FRAME Button on the Remote Control -or-
2. Press the Mode button on the Remote Control.
3. Use the arrows to select PICTURE FRAME, and press the Enter button.

How to use Picture Frame Mode:

1. Connect a USB Thumbstick containing JPG images to the Monitor, using one of the USB ports located on the side. JPG images cannot exceed 1600 x 1200 pixels.

NOTE: A USB Thumbstick is not included with the system.

Switch the Monitor to Picture Frame Mode using the Multi-function Mode button on the front of the Monitor, or by pressing the Picture Frame button on the Remote Control.

2. Configure the Picture Frame Menu to display the images.

If you press the PIP button on your remote control you can view your DVR in a Picture In Picture. This provides you with the ability to view images from your cameras while looking at your pictures.



Benefits!

Business:

- *Advertizing*
 - *(ie.)Restaurant: Display a menu with prices*
 - *(ie.)Corner Store: Display this weeks specials*
- *Disguising the Observation System as a regular monitor*
- *Space saver*

Residential:

- *Share family photos*
- *Disguising the Observation System as a Digital Picture Frame*

What is Installation Guide Mode?

Displays the system installation video (12 minutes)



IT IS HIGHLY RECOMMENDED TO VIEW OUR EASY TO FOLLOW INSTALLATION VIDEO. YOU CAN PAUSE, REWIND OR FAST FORWARD TO ALLOW YOU TO INSTALL THE SYSTEM WITH STEP BY STEP INSTRUCTIONS.

How do I access Installation Guide Mode?

How to access Installation Guide Mode:



Front Panel:

1. Press the Multi-Function Mode Button on the Front Panel.
2. Use the Up and Down arrows on the Navigation Control to select INSTALLATION GUIDE.
3. Press the Enter button on the Navigation Control to switch to INSTALLATION GUIDE Mode.

Remote:

1. Press the INSTALLATION GUIDE Button on the Remote Control -or-
2. Press the Mode button on the Remote Control.
3. Use the arrows to select INSTALLATION GUIDE, and press the Enter button.

Note: The installation video is also located on the CD. You can also view it on line at www.lorexctv.com/suport in the consumer guides section.

It's all on the web



Product Information



Specification Sheets



User Manuals



Software Upgrades



Quick Start Guides



Firmware Upgrades



LOREX

CURRENCY:

Lorex Sylvania Home Sentinel Sentinel CCTV Deals CCTV Focus On CCTV

search My Account Customer Support Warranty Registration Shopping Cart (0)

PRODUCTS

- Accessories
- Cameras
- CCTV Observation Systems
- Digital Video Monitoring
- mCAM
- Mobile CCTV Systems
- Network Cameras & Servers
- Simplified Home Security
- Video Doorphone Systems
- Video Recorders / Multiplexers
- Wired Camera Systems
- Wireless Camera Systems

BLOWOUT SPECIALS

Product Support 2010
Enter your model number below to search for support information.
GO
SUPPORT

LOREX SUPPORT

Welcome to Lorex Support **Advanced Search**

mCam software is Windows Vista Compatible
New Windows Vista Compatible software and drivers available for mCAM web cameras.
Find Solution

Windows Vista updates
Download Windows Vista 32-bit compatible software updates
Learn More

Discontinued models
Looking for Owners Manuals & Support for Discontinued Lorex Products. Visit our special page for Discontinued models.
Learn More

Consumer Guides
For all the information you need to know to before making a purchase
Learn More

Installation Guides/Videos
Ready to install a CCTV product? Visit our Installation guide/Videos to learn the basics Remote Video Access and Port forwarding
Learn More

Warranty
Software Related Products
Non-software Related Products
Register your product online for Warranty. Register now

Free Dynamic DNS Service
Get free Dynamic DNS Service for your Lorex Network Surveillance Products.
Register Now

PROFESSIONAL CCTV INSTALLATION

VISIT

www.lorexcctv.com

www.lorexcctv.com

Lorex Technology Inc.

Free Manuals Download Website

<http://myh66.com>

<http://usermanuals.us>

<http://www.somanuals.com>

<http://www.4manuals.cc>

<http://www.manual-lib.com>

<http://www.404manual.com>

<http://www.luxmanual.com>

<http://aubethermostatmanual.com>

Golf course search by state

<http://golfingnear.com>

Email search by domain

<http://emailbydomain.com>

Auto manuals search

<http://auto.somanuals.com>

TV manuals search

<http://tv.somanuals.com>