



NOW WITH



L15LD420/LD17LD420 Series

QUICK START GUIDE

WWW.LOREXCCTV.COM

INFORMATION IN THIS DOCUMENT IS SUBJECT TO CHANGE WITHOUT NOTICE. AS OUR PRODUCTS ARE SUBJECT TO CONTINUOUS IMPROVEMENT, LOREX TECHNOLOGY AND OUR SUBSIDIARIES RESERVE THE RIGHT TO MODIFY PRODUCT DESIGN, SPECIFICATIONS AND PRICES, WITHOUT NOTICE AND WITHOUT INCURRING ANY OBLIGATION. E&OE © 2008 LOREX. ALL RIGHTS RESERVED.

PACKAGE CONTENTS, INSTALLATION GUIDE, NAVIGATION & CONTROLS

2



System Contents:

- 1 x 4 Channel LCD DVR* with pre-installed HDD*
- 1 x 10 ft Ethernet Cable
- 1 x Remote Control
- 2 x AAA Batteries
- 1 x Power Adaptor (for monitor)
- 1 x "4 in 1" Power Adaptor (for cameras)*
- 4 x Color IR Cameras*
- 4 x 60 ft Extension Cables*
- 4 x Metal Camera Stands with Mounting Screws*
- 1 x Lorex Client 2.2 Software CD
- 1 x PS2 Mouse
- 1 x User's Manual
- 1 x Software Manual
- 1 x Quick Start Guide

* Screen size, number of cameras, accessories and hard drive capacity may vary by model. Check your package for specific content information.

INSTALLATION GUIDE

STEP 1

Time Under 20 Minutes*
 Tools Hand Tools
 Skills - Easy Plug & Play connections, On screen set up

* Installation time may vary based on application and camera cabling

STEP 2

Time Under 30 Minutes*
 Hardware Computer & Router*
 Skills - Intermediate Plug & Play connectors, On screen set up

* Installation time may vary based on application

* Minimum System Requirement: Windows XP, Pentium IV, 256MB Ram (512MB Recommended), 200MB Storage, Internet, DSL or Cable Modem

STEP 3

Time 60 Minutes
 Hardware Computer & Router*
 Skills - Advanced Basic Computer Skills, Router Port Forwarding

* Installation time may vary based on application

* Minimum System Requirement: Windows XP, Pentium IV, 256MB Ram (512MB Recommended), 200MB Storage, Internet, DSL or Cable Modem

MOUSE:

RECOMMENDED FOR EASY USE AND NAVIGATION

LEFT BUTTON

- Double click in viewing mode to display camera in full screen.

RIGHT BUTTON

- Click to open/exit the Mouse MENU in Viewing Mode.



SCROLL WHEEL

- Used to change values in the MENU mode.

REMOTE CONTROL:

RECOMMENDED FOR USE FROM A DISTANCE



ATTENTION:

Broadband Router and Computers are required for local and remote monitoring (not included).



ATTENTION:

*Number of channels, cameras and hard drive capacity may vary by model. Check your package for specific



INSTRUCTIONS:

For detailed setup information, please refer to your User's manual.



SOFTWARE REQUIREMENTS:

For Lorex Client Software requirements, please refer to Lorex Client Software Manual.

RECOMMENDED TIPS

Check Pages 9-10

STEP 1 - SET UP YOUR MONITOR FIRST



CONNECT CAMERAS TO THE MONITOR:

Connect the first camera to the CH1 input. Follow the same steps to connect the additional cameras.

1. Connect the Female BNC end of the supplied 60' extension cable to the camera. Connect the male Power end of the extension cable to the camera.
2. Connect the Female end of the supplied 60' extension cable to an open BNC camera input on the back of the System. Connect the female Power end of the extension cable to one of end of the 4 in one power adaptor.

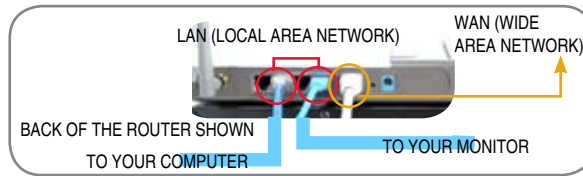


IMPORTANT NOTE: The ends of the extension cable are NOT the same - one end has a Male power port, and the other has a Female power port. Before permanently running the Camera Extension Cable, make sure that the cable has been oriented between the Camera and the unit correctly



CONNECT THE ETHERNET CABLE:

Connect one end of the ethernet cable to one of the router's (not included) LAN PORTS and the other end to Monitor's Network Port located at the bottom of the monitor. See picture below showing a generic LAN/WAN connection.



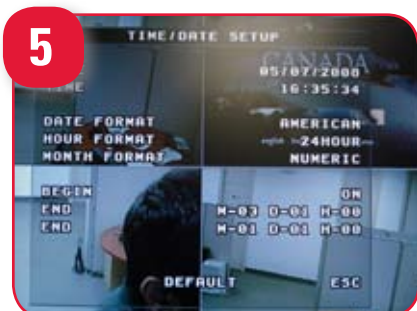
CONNECT THE MOUSE:

Connect the Mouse to the PS2 port of the monitor.



CONNECT POWER CABLE:

Connect one end of the Power adaptor to the monitor, the other end to an electrical outlet. This unit powers ON once it is plugged in to the power outlet.



SET THE TIME AND DATE:

1. Press the MENU button from the Front Panel of the Monitor (or Remote Control), or use the Mouse and Click the Menu Icon
2. DVR LOG IN screen appears soon after the Menu button is pressed asking for a password. Note: USER ID by default is ADMIN. Password is numeric and is not needed for initial MENU setup. Press ENTER to enter the MAIN MENU.
3. On the MAIN MENU screen select CONFIGURATION and select TIME & DATE.
4. Change or alter the factory default settings and press ESC to exit this menu.

Congratulations! You have completed Step 1 successfully. You can now view, record and playback images on your monitor.

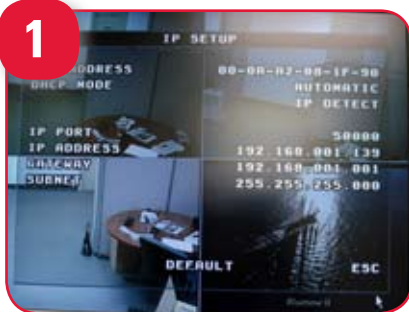
After you see camera images on your monitor screen, remove the protective film from camera(s) and monitor screen.

Make sure that the Date and Time are set prior to recording.



STEP 2 - SET UP LOCAL VIEWING ON YOUR PC

THIS STEP RELATES TO REMOTE VIEWING OVER THE LAN (LOCAL AREA NETWORK) BY USING A PC LOCATED ON THE SAME NETWORK AS THAT OF THE SYSTEM.



RETRIEVE SYSTEM INFORMATION:

1. Access the Main Menu Setup screens, and navigate to the MAIN MENU - EXTERNAL DEVICE - TCP/IP SETUP - IP SETUP option.
2. Record the MAC Address of your system. This information is NECESSARY for the DDNS Setup process.
3. Confirm that the DHCP MODE is set to AUTOMATIC. This will allow your system to lease an IP ADDRESS from your router. If the system is not set to AUTOMATIC, change the setting in the DHCP SETUP menu and click DETECT IP.
4. The IP PORT is 50000 by default.

***YOUR SYSTEM MUST BE CONNECTED TO A ROUTER PRIOR TO POWERING IT ON.**

RECORD THE IP AND MAC ADDRESSES IN THE SECTION BELOW:

IP ADDRESS: _____ . _____ . _____ . _____

MAC ADDRESS: _____ - _____ - _____ - _____ - _____ - _____

(Required for DDNS registration)

NOTE: The system will lease networking information from your Router. If you wish to set your information manually, then set the DHCP MODE to MANUAL. Please consult your Hardware Manual for further Menu options.

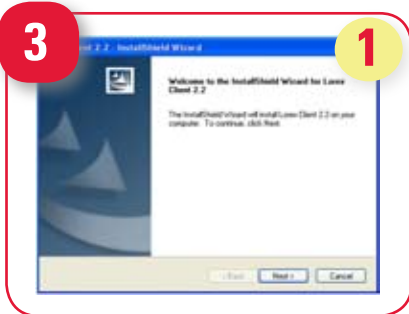


INSTALL SOFTWARE:

(on your local computer for local viewing)

Insert the LOREX CLIENT 2.2 SOFTWARE CD into your local computer's CD ROM drive and proceed with the installation.

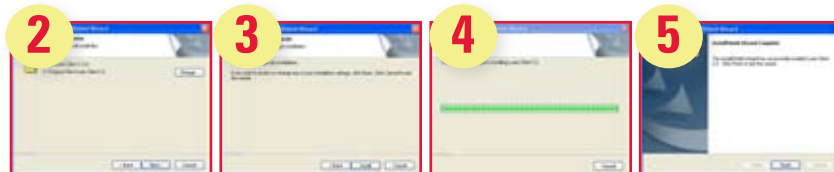
For Lorex Client Software requirements, please refer to the Software User Manual.



LOREX CLIENT 2.2 SOFTWARE:

(on your local computer for local viewing)

Follow the installation screens to complete Lorex Client 2.2 Software installation.



LOREX CLIENT 2.2 SOFTWARE:

(on your local computer for local viewing)

Close the CD Menu Screen. A Lorex Client Icon will appear on your desktop.

RUN THE LOREX CLIENT 2.2 SOFTWARE:

(on your local computer)

Double-click the LOREX CLIENT 2.2 SOFTWARE icon on your desktop to run the program.



STEP 2 - SET UP LOCAL VIEWING ON YOUR PC

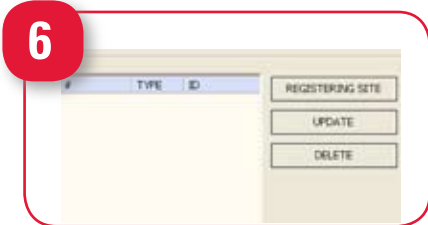
CONTINUED



LOREX CLIENT 2.2 IRS SETUP - MAIN SCREEN

(on your local computer for local viewing)

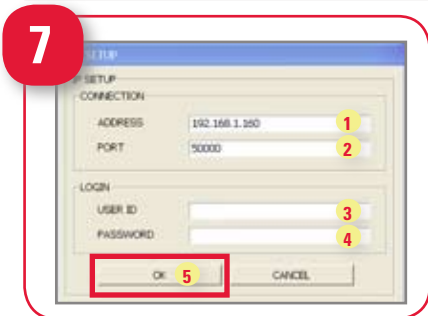
Click the IRS Setup tab to configure the DDNS Settings (must be setup prior to using the H.264 Viewer).



LOREX CLIENT 2.2 IRS SETUP - REGISTERING SITE

(on your local computer for local viewing)

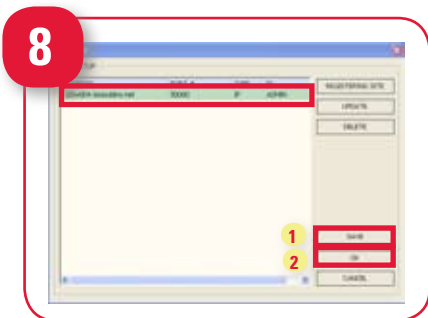
Click on the "REGISTERING SITE" button to add a new site to your system.



LOREX CLIENT 2.2 IRS SETUP - REGISTERING SITE

(on your local computer for local viewing)

1. ADDRESS: Add the IP address recorded earlier at Step 2 - 1
2. PORT: By default is set to 50000
3. USER ID: By default is ADMIN
4. PASSWORD: Leave it blank
5. Press OK to add the new site you have created



LOREX CLIENT 2.2 IRS SETUP - REGISTERING SITE

(on your local computer for local viewing)

1. Once you see the registered site, press the SAVE button.
2. Click the OK button. You will be asked to key in the User ID and Password.
USER ID: By default is ADMIN
PASSWORD: Leave it blank

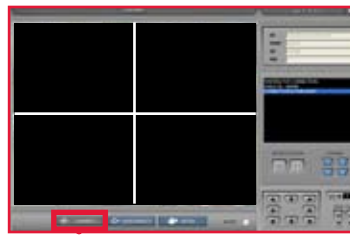


VIEW CAMERAS LOCALLY:

(on your local computer for local viewing)

1. Once a site is registered for use, the interactive buttons part of the Main Software Screen become active.
2. Click the H.264 VIEWER button to view your local site.
3. From the H.264 VIEWER screen (as shown in the picture), press the Connect button to connect to Local Live site to view your cameras.

Congratulations! You have completed Step 2 successfully. You can now view and playback images on your local computer over the Local Area Network (LAN).





STEP 3 - SET UP INTERNET REMOTE SECURITY MONITORING

1



VISIT WWW.LOREXCCTV.COM/SUPPORT TO VIEW THE ROUTER CONFIGURATION GUIDE

PORT FORWARD YOUR ROUTER:

Port forward your router first before proceeding with the set-up. You must forward Ports: 50000 (TCP/IP), 80: (WEB)

All routers are different. To port forward your router, please refer to your router's user manual.

A router configuration guide featuring the most commonly used routers in the market is available on your Lorex Client Software CD and also on www.lorexcctv.com/support in the Consumer's Guide Section. An example of a port forwarding screen is shown for illustration purposes.

EXAMPLE Port Range					
Application	Start	End	Protocol	IP Address	Enable
System	50000	to 50000	Both	192.168.1.12	<input checked="" type="checkbox"/>
System	80	to 80	Both	192.168.1.12	<input checked="" type="checkbox"/>

2

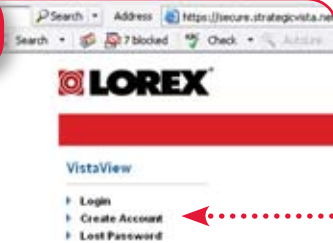
<http://www.lorexddns.net>



DDNS (Dynamic Domain Name System) Set-up:

Open your web browser (Internet Explorer by default) and enter <http://www.lorexddns.net> in the address bar.

3



CREATE ACCOUNT:

From the <http://www.lorexddns.net> website, click the CREATE ACCOUNT option.

4



COMPLETE NEW ACCOUNT INFORMATION:

1. FOR PRODUCT LICENSE select the L15LD420 / L17LD420 Series from the drop down menu.
2. FOR PRODUCT CODE enter the Monitor's MAC address (recorded in step 2, section 1).
3. FOR URL REQUEST enter a unique URL name (e.g. tomsmith).
Note: URL name should not be more than 15 characters.

5

DDNS Server Name: LOREX
Domain Name: tomsmith.lorexddns.net
User Name: tomsmith
Password: (your password)

REGISTRATION EMAIL:

An automated REGISTRATION CONFIRMATION EMAIL will be sent to your email. Print and Save this confirmation. You will need this information to access your System remotely.



STEP 3 - SET UP INTERNET REMOTE SECURITY MONITORING


CONTINUED

6



ENTER DDNS SET-UP ON YOUR SYSTEM:

Mouse navigation (recommended)

1. Right click the MOUSE and press the Menu  icon.
2. You will be prompted to key in the User ID (ADMIN by default) and Password (leave it blank).
3. Press the Enter button and navigate to the MAIN MENU.
4. On the MAIN MENU, click on "EXTERNAL DEVICE".
5. On "EXTERNAL DEVICE" select "TCP/IP SETUP".
6. On TCP/IP SETUP select DDNS SETUP.

7



ENABLE DDNS SETTINGS:

- Set the DDNS ENABLE to ON
- DOMAIN - Enter the DDNS DOMAIN NAME from the Registration Email sent to you (e.g. tomsmith.lorexddns.net)
- USER NAME - Enter the USER NAME from the Registration Email sent to you (e.g. tomsmith)
- PASSWORD - By default is left blank
- DDNS STATUS - Indicates the status of DDNS connection.
- Click on REGISTER - This will register your system with LOREX DDNS. If the information you have entered is correct, the system will display a "Success" message.

NOTE: The DDNS service supports Dynamic IP addresses for remote connection. When this feature is configured on the remote system, you can access it remotely using the domain name instead of IP address. To use this feature, the system should be registered on the Lorex DDNS server. Alternatively, if you have a static IP address you can enter it here. Please refer to the LOREX CLIENT Manual for network setup and configuration.

8



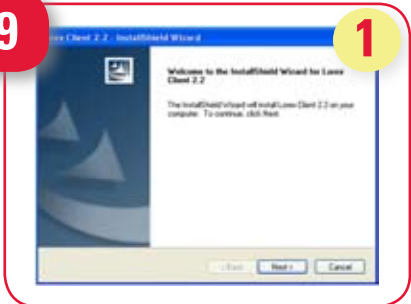
INSTALL SOFTWARE:

(on your remote computer for remote viewing)

Insert the LOREX CLIENT 2.2 SOFTWARE CD into your remote computer's CD ROM drive and proceed with the installation.

For Lorex Client Software requirements, please refer to the Software User Manual.

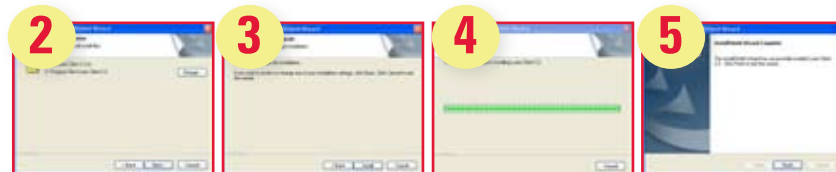
9



LOREX CLIENT 2.2 SOFTWARE:

(on your remote computer)

Follow the installation screens to complete Lorex Client 2.2 Software installation.



10



LOREX CLIENT 2.2 SOFTWARE:

(on your remote computer for remote viewing)

Close the CD Menu Screen. A Lorex Client Icon will appear on your desktop.

RUN THE LOREX CLIENT 2.2 SOFTWARE:

(on your local computer)

Double-click the LOREX CLIENT 2.2 SOFTWARE icon on your desktop to run the program.



STEP 3 - SET UP INTERNET REMOTE SECURITY MONITORING

CONTINUED

11

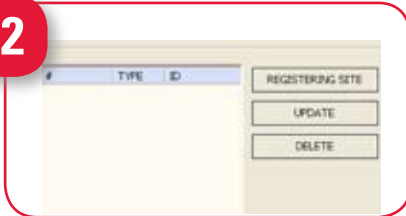


LOREX CLIENT 2.2 IRS SETUP - MAIN SCREEN

(on your remote computer for remote viewing)

Click the IRS Setup tab to configure the DDNS Settings (must be setup prior to using the H.264 Viewer).

12

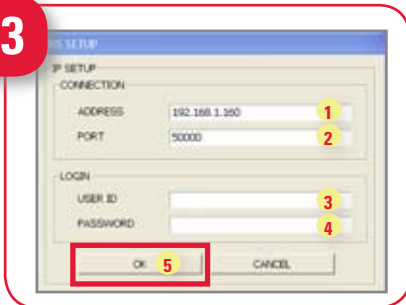


LOREX CLIENT 2.2 IRS SETUP - REGISTERING SITE

(on your remote computer for remote viewing)

Click on the "REGISTERING SITE" button to add a new site to your system.

13

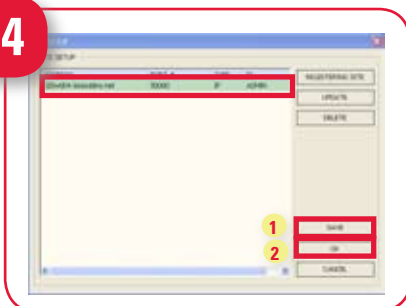


LOREX CLIENT 2.2 IRS SETUP - REGISTERING SITE

(on your remote computer for remote viewing)

1. ADDRESS: Enter the DDNS DOMAIN NAME from the Registration Email sent to you (e.g. tomsmith.lorexddns.net)
2. PORT: By default is set to 50000
3. USER ID: By default is ADMIN
4. PASSWORD: Leave it blank
5. Press OK to add the new site you have created

14

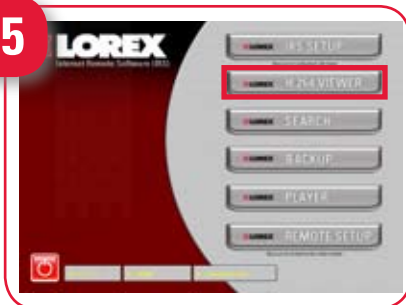


LOREX CLIENT 2.2 IRS SETUP - REGISTERING SITE

(on your remote computer for remote viewing)

1. Once you see the registered site, press the SAVE button.
2. Click the OK button. You will be asked to key in the User ID and Password.
USER ID: By default is ADMIN
PASSWORD: Leave it blank

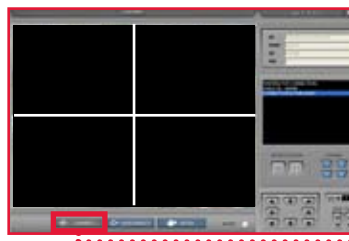
15



VIEW CAMERAS REMOTELY:

(on your remote computer for remote viewing)

1. Click the H.264 VIEWER screen (as shown in the picture) and press the Connect button to connect to the Remote Live site.



Congratulations! You have completed Step 3 successfully. You can now view and playback images on your remote computer over the Internet.



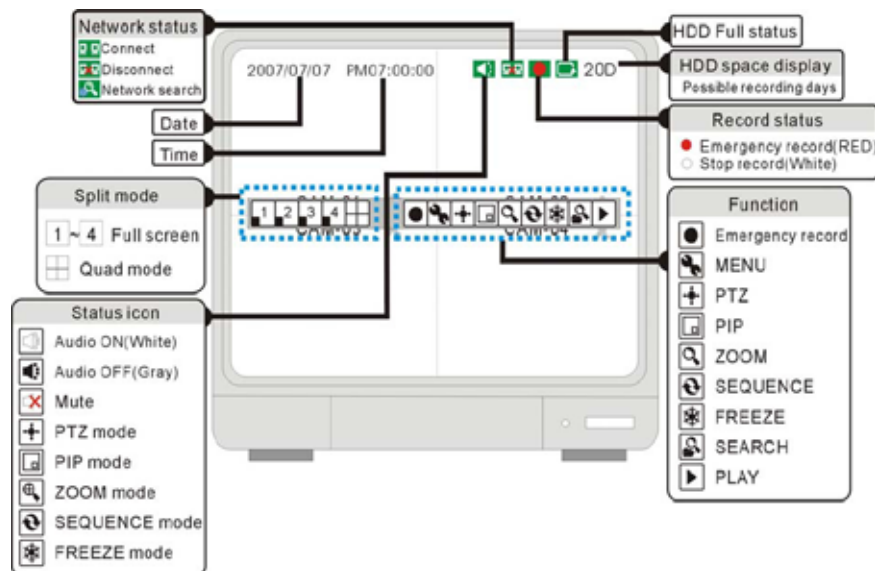
RECOMMENDED TIPS



LOCATE MONITOR CONNECTIONS:

Tilt the monitor UP to locate your monitor's connections.

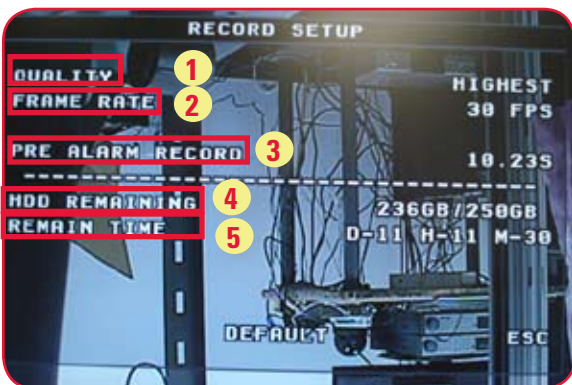
DISPLAY CONFIGURATION / FUNCTION ICONS



RECORD SETUP (storage calculator):

The system provides a Storage Calculator to calculate the amount of recording time available on your Hard Drive, based on the System Recording Settings.

Click on the Menu icon to enter MAIN MENU. On the MAIN MENU, click on the RECORD MENU. On the RECORD MENU, click on RECORD SET UP.



- [QUALITY]:** Set up the recording picture quality
Quality level: Normal / High / Highest. Data size of image in PAL system is a little bigger than NTSC system, but the total recording time is same.
- [FRAME RATE]:** Adjust recording frame rate.
- [PRE ALARM RECORD]:** Displays the amount of time included from the Pre Recording (in seconds).
- [HDD REMAINING]:** Indicates HDD capacity remaining by size (GB). / Indicates total HDD capacity (GB).
- [REMAIN TIME]:** Indicates HDD capacity remains by time. (D- days, H- hours, M- Minutes).



RECOMMENDED TIPS CONTINUED



HDD INSTALLATION:

The System comes with a pre-installed Hard Drive, however the unit will work with a replacement single SATA Hard Drive (up to 500GB).

NOTE: Make sure that the System is OFF and the power cable has been disconnected before changing the Hard Drive. For detailed instructions, check the user's manual.

FORMATTING THE NEW HARD DRIVE:

The New Hard Drive **MUST** be formatted. If a new HARD DRIVE is detected, the system will prompt you to **FORMAT** the drive. Please refer to the system's user manual for HDD installation.



TIP ON CAMERA MOUNTING:

Note: Test the cameras prior to selecting a permanent mounting location by temporarily connecting the Cameras and Cables to your System.

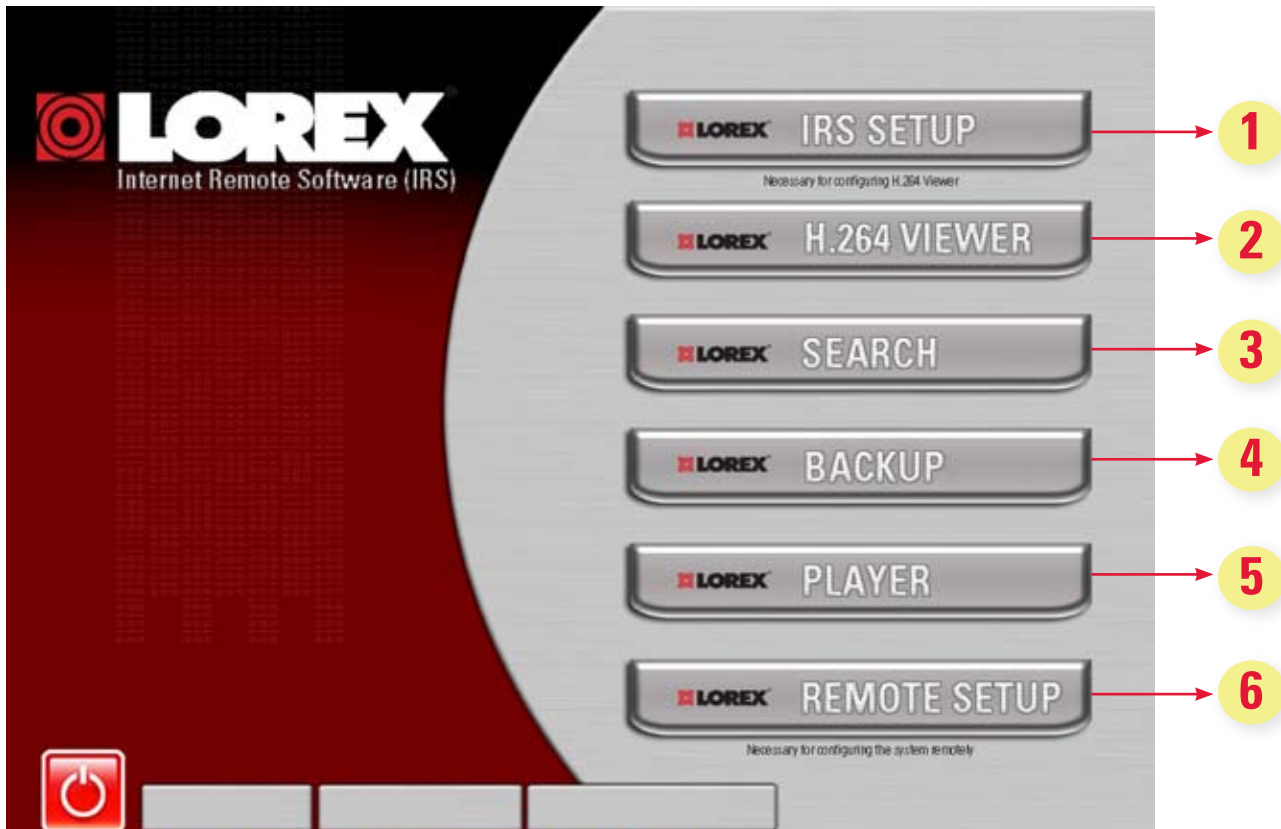


TIP ON REMOTE VIEWING AND PLAYBACK OVER THE INTERNET (WAN):

NOTE: You must have an active internet connection to the System to be able to perform Remote viewing or playback. Remote access is dependant on your connection speed, internet traffic and other network factors - the speed is normally 1~2 FPS (frames per second). This may impact the audio and PTZ functions.

For faster playback, it is recommended to download previously recorded video using the backup function and play it back using Backup Player 2.2 Software - refer to the user manual for details.

Regardless of the network playback speed, video is being recorded on your system in real time, and can be viewed when you are at the system or through the backup player.



1. LOREX IRS SETUP

Setting up IRS is necessary in order to use the H.264 Viewer.

2. LOREX H.264 VIEWER

Remote monitoring software recommended for Internet Remote Monitoring. H.264 video compression technology allows for efficient data transfer over the internet. You can view your system remotely while consuming less bandwidth.

3. LOREX SEARCH

Search for recorded data to playback from a remote location.

4. LOREX BACKUP

Create a backup of your recorded data from a remote location.

5. LOREX PLAYER

Playback data that has been backed up either from the system using a USB thumbdrive or from the backup software.

6. LOREX REMOTE SETUP

Configure the system remotely (e.g. change recording settings or schedules).



It's all on the Web

www.lorexcctv.com



For detailed setup information, please refer to your User's Manual. For additional information about determining your IP address, configuring your router, and port forwarding, please visit our website www.lorexcctv.com/support and click Consumer Guides Section or view guides from the CD included with your system.

Email Support: support@lorexcorp.com

Toll Free Technical Support :

North America: 1-888-42 LOREX (1-888-425-6739)

Toll Free Technical Support :

International (outside of North America): +800-425-6739-0

(Example: From the UK, dial 00 instead of +)

Lorex International Website - www.lorexinternational.com

Free Manuals Download Website

<http://myh66.com>

<http://usermanuals.us>

<http://www.somanuals.com>

<http://www.4manuals.cc>

<http://www.manual-lib.com>

<http://www.404manual.com>

<http://www.luxmanual.com>

<http://aubethermostatmanual.com>

Golf course search by state

<http://golfingnear.com>

Email search by domain

<http://emailbydomain.com>

Auto manuals search

<http://auto.somanuals.com>

TV manuals search

<http://tv.somanuals.com>