

DIGITAL WIRELESS QUAD SURVEILLANCE SYSTEM

WITH BUILT-IN VIDEO RECORDER AND
INDOOR/OUTDOOR MOTION CAMERA

Instruction Manual

English Version 1.0



MODELS:
LW2301 Series



Thank you for purchasing the Digital Wireless Quad Video Recording System.

This manual refers to the following products:

- LW2301 Series

Please visit us on the web for the most current Manuals, Quick Start Guides and Firmware. Additional Language Manuals may also be available at:

www.lorexcctv.com

CAUTION

**RISK OF ELECTRIC SHOCK
DO NOT OPEN**

CAUTION: TO REDUCE THE RISK OF ELECTRIC SHOCK
DO NOT REMOVE COVER (OR BACK).
NO USER SERVICABLE PARTS INSIDE.
REFER SERVICING TO QUALIFIED SERVICE PERSONNEL.



The lightning flash with arrowhead symbol, within an equilateral triangle, is intended to alert the user to the presence of uninsulated "dangerous voltage" within the products' enclosure that may be of sufficient magnitude to constitute a risk of electric shock.



The exclamation point within an equilateral triangle is intended to alert the user to the presence of important operating and maintenance (servicing) instructions in the literature accompanying the appliance.

WARNING: TO PREVENT FIRE OR SHOCK HAZARD, DO NOT EXPOSE THIS UNIT TO RAIN OR MOISTURE.

CAUTION: TO PREVENT ELECTRIC SHOCK, MATCH WIDE BLADE OF THE PLUG TO THE WIDE SLOT AND FULLY INSERT.

BEFORE YOU START

THIS PRODUCT MAY REQUIRE PROFESSIONAL INSTALLATION

LOREX IS COMMITTED TO FULFILLING YOUR SECURITY NEEDS



- We have developed user friendly products and documentation. Please read the Quick Start Guide and User Manual before you install this product.



- Consumer Guides and Video Tutorials are available on our web site at www.lorexcctv.com/support



- If you require further installation assistance, please visit www.lorexcctv.com/installation or contact a professional installer.



- Please refer to the “Need Help” insert for technical support and customer care information.



- Please note that once the components of this product have been unsealed, you cannot return this product directly to the store without the original packaging.

AVANT DE COMMENCER

ANTES DE EMPEZAR

CE PRODUIT POURRAIT EXIGER UNE INSTALLATION PROFESSIONNELLE

ESTE PRODUCTO PUEDE EXIGIR UNA INSTALACIÓN PROFESIONAL

LOREX S'ENGAGE À SATISFAIRE VOS BESOINS SÉCURITAIRES

- Veuillez lire le guide de démarrage rapide et le mode d'emploi avant d'installer ce produit.
- Les guides du consommateur et les séances de tutorat vidéo sont disponibles sur l'Internet en visitant www.lorexcctv.com/support
- Si vous avez besoin de l'aide pour l'installation, veuillez visiter www.lorexcctv.com/installation ou contactez un spécialiste en installation
- Veuillez référer à l'insert "Need Help" pour obtenir de l'information sur le service à la clientèle et le support technique
- Veuillez constater qu'une fois que les composants de ce produit ont été retirés de l'emballage, vous ne pourrez plus retourner ce produit directement au magasin.

LOREX SE COMPROMETE A SATISFACER SUS NECESIDADES EN SEGURIDAD

- Favor de leer la guía de instalación rápida y la guía del usuario antes de instalar este producto.
- Puede conseguir las guías del consumidor y los cursos en enseñanza video sobre el Internet visitando www.lorexcctv.com/support
- Si necesita ayuda para la instalación, visite www.lorexcctv.com/installation o contacte un especialista en instalaciones
- Favor de referir al documento "Need Help" para obtener información acerca del servicio al cliente y al soporte técnico
- Favor de notar que una vez que los componentes de este producto han sido removidos del embalaje, no podrá devolver este producto directamente a la tienda




www.lorexcctv.com

NEED HELP?



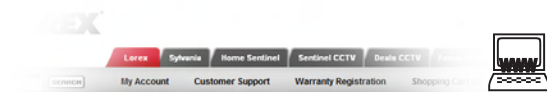
 **LOREX**[®]

CONTACT US FIRST

DO NOT RETURN THIS PRODUCT TO THE STORE

Please make sure to register your product at www.lorexcctv.com to receive product updates and information

3 EASY WAYS TO CONTACT US:



Online:

Product Support is available 24/7 including product information, user manuals, quick start up guides and FAQ's at www.lorexcctv.com/support

To order accessories, visit www.lorexcctv.com

By Email:

Technical Support (for technical/installation issues)
support@lorexcorp.com

Customer Care (for warranty and accessory sales)
customerservice@lorexcorp.com

Customer Feedback
info@lorexcorp.com

By Phone:

NORTH AMERICA: 1-888-425-6739 (1-888-42-LOREX)

MEXICO: 1-800-514-6739

INTERNATIONAL: +800-425-6739-0

(Example: From the UK, dial 00 instead of +)

Technical Support (for technical/installation issues)
Press option 1 for English, and then press option 1

OR

Customer Care (for warranty and accessory sales)
Press option 1 for English, and then press options 2 to 5





**NECESITA AYUDA
COMUNÍQUESE PRIMERO
CON NOSOTROS**



**VOUS AVEZ BESOIN
D'AIDE?
CONTACTEZ-NOUS
D'ABORD**

NO DEVUELVA ESTE PRODUCTO A LA TIENDA

NE RETOURNEZ PAS CE PRODUIT AU MAGASIN

Cerciórese de por favor colocar su producto en www.lorexcctv.com/registration para recibir actualizaciones y la información del producto

Veillez veiller à enregistrer votre produit à www.lorexcctv.com/registration pour recevoir des mises à jour et l'information de produit

**3 MANERAS SENCILLAS DE COMUNICARSE
CON NOSOTROS:**

3 FAÇONS FACILES DE NOUS CONTACTER:



En línea:

apoyo al producto disponible 24/7 incluyendo información del producto, manuales para el usuario, guías de inicio rápido y preguntas más frecuentes en

www.lorexcctv.com/support

Para colocar pedidos de accesorios, visite

www.lorexcctv.com



Por Correo Electrónico:

soporte técnico (para asuntos técnicos/la instalación)

support@lorexcorp.com

0

servicio al cliente (respecto a la garantía y a la venta de accesorios)

customerservice@lorexcorp.com

Comentarios de cliente

info@lorexcorp.com



Por Teléfono:

L'AMÉRIQUE DU NORD: 1-888-425-6739 (1-888-42-lorex)

MEXICO: 1-800-514-6739

INTERNACIONAL: +800-425-6739-0

(Ejemplo: Desde el Reino Unido, marque el 00 en lugar del +)

soporte técnico (para asuntos técnicos/la instalación)
oprima la opción 1 para inglés y luego oprima la opción 1

0

servicio al cliente (respecto a la garantía y a la venta de accesorios) oprima la opción 1 para inglés y luego oprima las opciones 2 A 5

sus opiniones son bienvenidas en

info@lorexcorp.com

para colocar pedidos de accesorios, visite

www.lorexcctv.com



En ligne:

le support des produits est disponible 24 heures sur 24, 7 jours sur 7, y compris les informations sur les produits, les guides de l'utilisateur, les guides de démarrage rapide et les foires à questions

www.lorexcctv.com/support

Pour commander des accessoires, visitez

www.lorexcctv.com



Par Courriel:

support technique (pour les questions techniques et d'installation) **support@lorexcorp.com**

OU

service à la clientèle (pour les questions de garantie et les ventes d'accessoires)

customerservice@lorexcorp.com

Commentaires des clients

info@lorexcorp.com



Par Téléphone:

NORTE AMÉRICA: 1-888-425-6739 (1-888-42-lorex)

MEXICO: 1-800-514-6739

INTERNATIONAL: +800-425-6739-0

(Exemple: À partir du Royaume-Uni, composez 00 au lieu de +)

support technique (pour les questions techniques et d'installation) appuyez sur l'option 1 pour l'anglais, et ensuite sur l'option 1

OU

service à la clientèle (pour les questions de garantie et les ventes d'accessoires) appuyez sur l'option 1 pour l'anglais, et ensuite sur les options 2 à 5

nous serions heureux de recevoir vos

commentaires à info@lorexcorp.com pour

commander des accessoires, visitez

www.lorexcctv.com

Important Safeguards

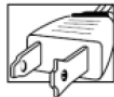
In addition to the careful attention devoted to quality standards in the manufacture process of your video product, safety is a major factor in the design of every instrument. However, safety is your responsibility too. This sheet lists important information that will help to assure your enjoyment and proper use of the video product and accessory equipment. Please read them carefully before operating and using your video product.

Installation

1. **Read and Follow Instructions** - All the safety and operating instructions should be read before the video product is operated. Follow all operating instructions.
2. **Retain Instructions** - The safety and operating instructions should be retained for future reference.
3. **Heed Warnings** - Comply with all warnings on the video product and in the operating instructions.
4. **Polarization** - Do not defeat the safety purpose of the polarized or grounding-type plug.
 - o A polarized plug has two blades with one wider than the other.
 - o A grounding type plug has two blades and a third grounding prong.
 - o The wide blade or the third prong is provided for your safety.
 - o If the provided plug does not fit into your outlet, consult an electrician for replacement of the obsolete outlet
5. **Power Sources** - This video product should be operated only from the type of power source indicated on the marking label. If you are not sure of the type of power supply to your location, consult your video dealer or local power company. For video products intended to operate from battery power, or other sources, refer to the operating instructions.
6. **Overloading** - Do not overload wall outlets of extension cords as this can result in the risk of fire or electric shock. Overloaded AC outlets, extension cords, frayed power cords, damaged or cracked wire insulation, and broken plugs are dangerous. They may result in a shock or fire hazard. Periodically examine the cord, and if its appearance indicates damage or deteriorated insulation, have it replaced by your service technician.
7. **Power-Cord Protection** - Power supply cords should be routed so that they are not likely to be walked on or pinched by items placed upon or against them, paying particular attention to cords at plugs, convenience receptacles, and the point where they exit from the video product.
8. **Ventilation** - Slots and openings in the case are provided for ventilation to ensure reliable operation of the video product and to protect it from overheating. These openings must not be blocked or covered. The openings should never be blocked by placing the video equipment on a bed, sofa, rug, or other similar surface. This video product should never be placed near or over a radiator or heat register. This video product should not be placed in a built-in installation such as a bookcase or rack unless proper ventilation is provided or the video product manufacturer's instructions have been followed.
9. **Camera Extension Cables** - Check the rating of your extension cable(s) to verify compliance with your local authority regulations prior to installation.
10. **Attachments** - Do not use attachments unless recommended by the video product manufacturer as they may cause a hazard.
11. **Water and Moisture** - Do not use this video product near water. For example, near a bath tub, wash bowl, kitchen sink or laundry tub, in a wet basement, near a swimming pool and the like. Caution: Maintain electrical safety. Power line operated equipment or accessories connected to this unit should bear the UL listing mark of CSA certification mark on the accessory itself and should not be modified so as to defeat the safety features. This will help avoid any potential hazard from electrical shock or fire. If in doubt, contact qualified service personnel.
12. **Accessories** - Do not place this video equipment on an unstable cart, stand, tripod, or table.

The video equipment may fall, causing serious damage to the video product. Use this video product only with a cart, stand, tripod, bracket, or table recommended by the manufacturer or sold with the video product.

Any mounting of the product should follow the manufacturer's instructions and use a mounting accessory recommended by the manufacturer.



Service

13. **Servicing** - Do not attempt to service this video equipment yourself as opening or removing covers may expose you to dangerous voltage or other hazards. Refer all servicing to qualified service personnel.
14. **Conditions Requiring Service** - Unplug this video product from the wall outlet and refer servicing to qualified service personnel under the following conditions.
 - A. When the power supply cord or plug is damaged.
 - B. If liquid has been spilled or objects have fallen into the video product.
 - C. If the video product has been exposed to rain or water.
 - D. If the video product does not operate normally by following the operating instructions. Adjust only those controls that are covered by the operating instructions. Improper adjustment of other controls may result in damage and will often require extensive work by a qualified technician to restore the video product to its normal operation.
 - E. If the video product has been dropped or the cabinet has been damaged.
 - F. When the video product exhibits a distinct change in performance. This indicates a need for service.
15. **Replacement Parts** - When replacement parts are required, have the service technician verify that the replacements used have the same safety characteristics as the original parts. Use of replacements specified by the video product manufacturer can prevent fire, electric shock or other hazards.
16. **Safety Check** - Upon completion of any service or repairs to this video product, ask the service technician to perform safety checks recommended by the manufacturer to determine that the video product is in safe operating condition.
17. **Mounting** - The cameras provided with this system should be mounted only as instructed in this guide, using the provided mounting brackets.
18. **Heat** - The product should be situated away from heat sources such as radiators, heat registers, stoves, or other products (including amplifiers) that produce heat.

Use

19. **Cleaning** - Unplug the video product from the wall outlet before cleaning. Do not use liquid cleaners or aerosol cleaners. Use a damp cloth for cleaning.
20. **Product and Cart Combination** - Video and cart combination should be moved with care. Quick stops, excessive force, and uneven surfaces may cause the video product and cart combination to overturn.
21. **Object and Liquid Entry** - Never push objects for any kind into this video product through openings as they may touch dangerous voltage points or "short-out" parts that could result in a fire or electric shock. Never spill liquid of any kind on the video product.
22. **Lightning** - For added protection for this video product during a lightning storm, or when it is left unattended and unused for long periods of time, unplug it from the wall outlet and disconnect the antenna or cable system. This will prevent damage to the video product due to lightning and power line surges. The manufacturer's instructions and use a mounting accessory recommended by the manufacturer.

General Precautions

1. All warnings and instructions in this manual should be followed
2. Remove the plug from the outlet before cleaning. Do not use liquid aerosol detergents. Use a water dampened cloth for cleaning
3. Do not use this unit in humid or wet places
4. Keep enough space around the unit for ventilation. Slots and openings in the storage cabinet should not be blocked

FCC NOTICE

This device complies with Part 15, subpart C, of the FCC Rules. Operation is subject to the following two conditions: (1) this device may not cause harmful interference, and (2) this device must accept any interference received, including interference that may cause undesired operation.

The manufacturer is not responsible for any radio or TV interference caused by unauthorized modifications to this equipment. Such modifications could void the user's authority to operate the equipment.

However, it is imperative that the user follows the guidelines in this manual to avoid improper usage which may result in damage to the unit, electrical shock and fire hazard injury

In order to improve the feature functions and quality of this product, the specifications are subject to change without notice from time to time.



www.lorecctv.com

Features

Technology

- Ultra Digital Wireless technology features the latest advancements in wireless video surveillance
- Minimizes interference with other devices such as wireless routers, cordless phones, Bluetooth devices and is Wi-Fi friendly
- 100% Digital video and audio provides excellent image quality and crystal clear sound
- Offers a secure connection between the receiver and camera for total privacy
- Signal strength and out of range notifications help you find best possible installation location

Receiver

- Built-in Video Recorder with SD memory card slot
- Includes SD memory card and supports up to 16 GB size
- Record when motion is detected by the camera or schedule a recording start and stop time
- Record at VGA (640x480) resolution for excellent playback quality or QVGA (320x240) resolution to maximize recording time
- Viewing Options:
 - Quad Mode Shows up to 4 Camera Views on Same Screen
 - Auto Sequence Viewing Mode Shows each camera in Full Screen
- On-screen menu system makes set-up and changing camera settings easy
- Connects in minutes to any TV
- System expandable up to 4 cameras
- Includes IR extender so you can hide the receiver out of plain sight and still control all functions using the included remote control
- New recording / memory full indicators
- Place on a flat surface or wall mount with included mounting kit
- SMA connector allows for the usage of higher power antennas to extend wireless range (antennas sold separately)

Camera

- VGA (640x480) Resolution Camera
- IR Night Vision 40 ft. / 12 m*
- Built-in PIR motion sensor for accurate motion detection
- Durable metal weatherproof housing ideal for indoor/outdoor use
- Microphone for listen-in surveillance

* Stated IR Illumination range is based on ideal conditions. Actual range and image clarity depends on installation location, viewing area and light reflection/absorption level of object

The Digital Wireless signal transmission type used by the Lorex LW2301 series is also known as **FHSS – Frequency Hopping Spread Spectrum**. This type of signal is highly resistant to deliberate jamming as it generates a channel hopping sequence using an algorithm generated by the receiver system.

Table of Contents

Getting Started	8
Wireless Receiver	9
Camera	11
Remote Control	12
Installing the Camera	13
Connecting the Wireless Receiver	14
LED Indicators on the Wireless Receiver	15
Using the System	16
On-Screen Display	16
Viewing Modes	18
Quad Mode	19
Setting the Time	20
Recording	21
Recording Mode Summary	21
Manual Recording	22
Schedule Recording	23
Stopping Schedule Recording	24
Motion Recording	25
Viewing Recorded Video	27
Viewing Video Using the System	27
Controlling Playback	29
Viewing Video Directly From the SD Card	30
PC	30
Mac	30
Using the Main Menu	31
Camera On/Off	32
Record	33
Quality	34
VGA or QVGA?	34
Trigger Record	35
Schedule Record	36
Overwrite	37
Pairing	38
Settings	40
Date & Time	41
AV Out	42
Zoom	43
Brightness	44
Format	45
Default	46
Appendix A: System Specifications	47
Appendix B: About Digital Wireless Technology	48
Appendix C: Adding Cameras	49
Appendix D: Strengthening the Range of the Wireless Signal	50
Appendix E: Deleting Video Files on the System	52
Appendix F: Estimated Recording Times on SD Cards	53
Appendix G: Power Failure	54
Troubleshooting	55
FAQ	56

Getting Started

The system comes with the following components:



**1 x COLOR OUTDOOR
NIGHT VISION
CAMERA***



**1 x CAMERA
MOUNTING STAND**



**1 x WIRELESS
RECEIVER**



**1 x SD MEMORY
CARD**



**1 x AUDIO/VIDEO
CABLE**



**1 x REMOTE
CONTROL**



**2 x WALL MOUNTING
KIT (FOR RECEIVER
AND CAMERA)**



**1 X WIRELESS ANTENNA
(FOR CAMERA)**



**2 x POWER ADAPTERS
(FOR RECEIVER &
CAMERA)**



**1 x IR
EXTENDER**

*Camera configuration may vary by model

CHECK YOUR PACKAGE TO CONFIRM THAT YOU HAVE RECEIVED THE COMPLETE SYSTEM, INCLUDING ALL COMPONENTS SHOWN ABOVE.

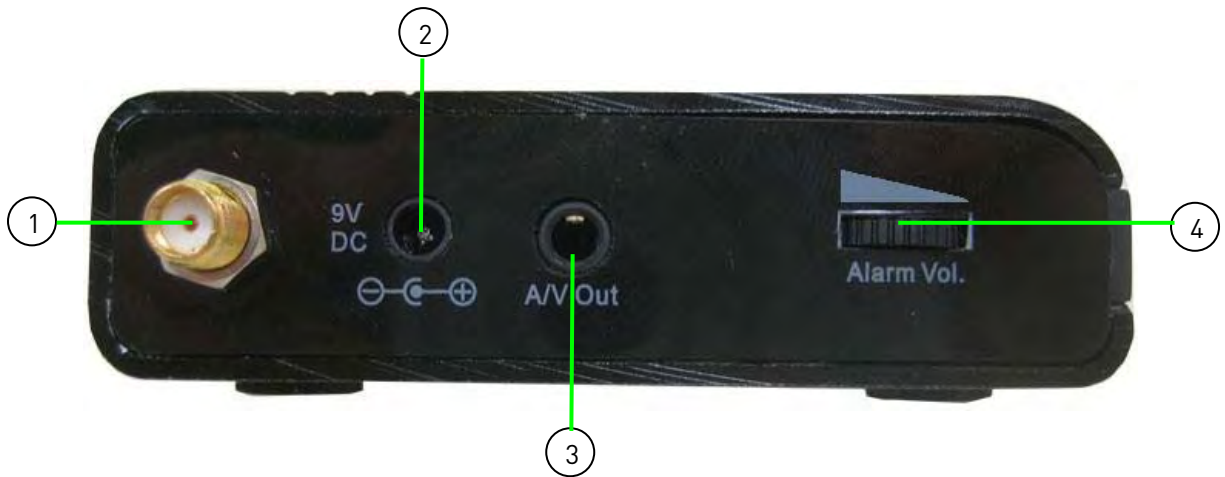
Wireless Receiver

Top Panel



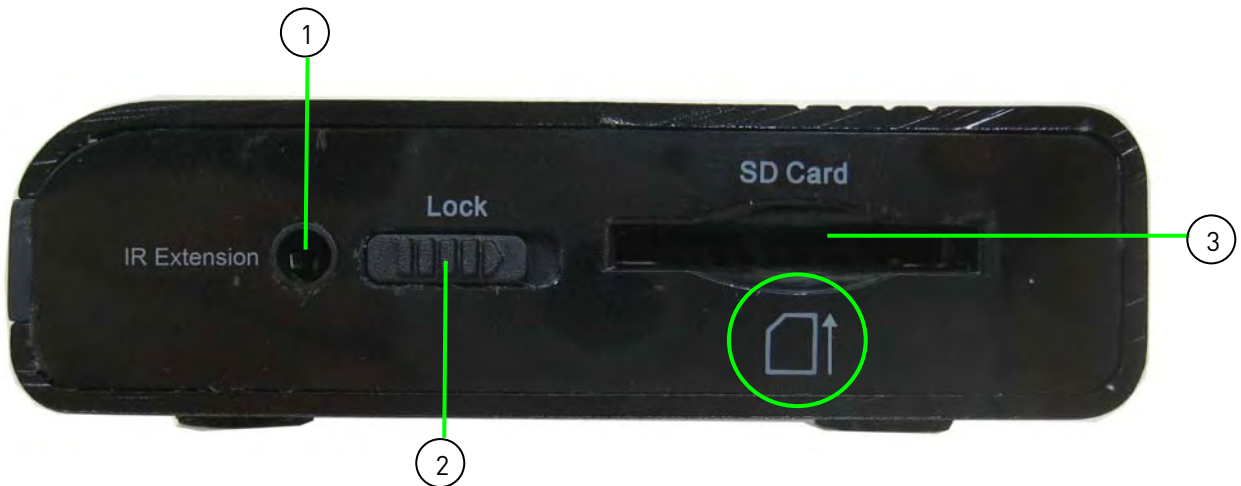
1. **CHANNEL:** Press M to change channels 1–4 manually; press A to enable Auto Sequence Viewing Mode.
2. **RECORD:** Press M to start Manual Recording; press M again to stop. Press A to start Motion Recording; press A again to stop.
NOTE: The date and time must be set on the system prior to using Schedule Recording. For details, see “Setting the Time” on page 20.
3. **Channels, OK:** QUAD MODE ONLY—Press 1 to view camera 1, 2 to view camera 2, 3 to view camera 3, and 4 to view camera 4; press OK to enter/confirm menu selections.
NOTE: The OK button serves the same function as the Enter button on the remote control.
4. **Quad:** Press to change display view to Quad (4-way); press again to exit.
5. **MENU:** Press to open the Main Menu, cancel/exit, or go to the previous page.
6. **Del.:** Press to delete files on the SD card
7. **LED Indicators:** LED indicators for camera and receiver operations. For details, see “LED Indicators on the Wireless Receiver” on page 15.

Left Panel



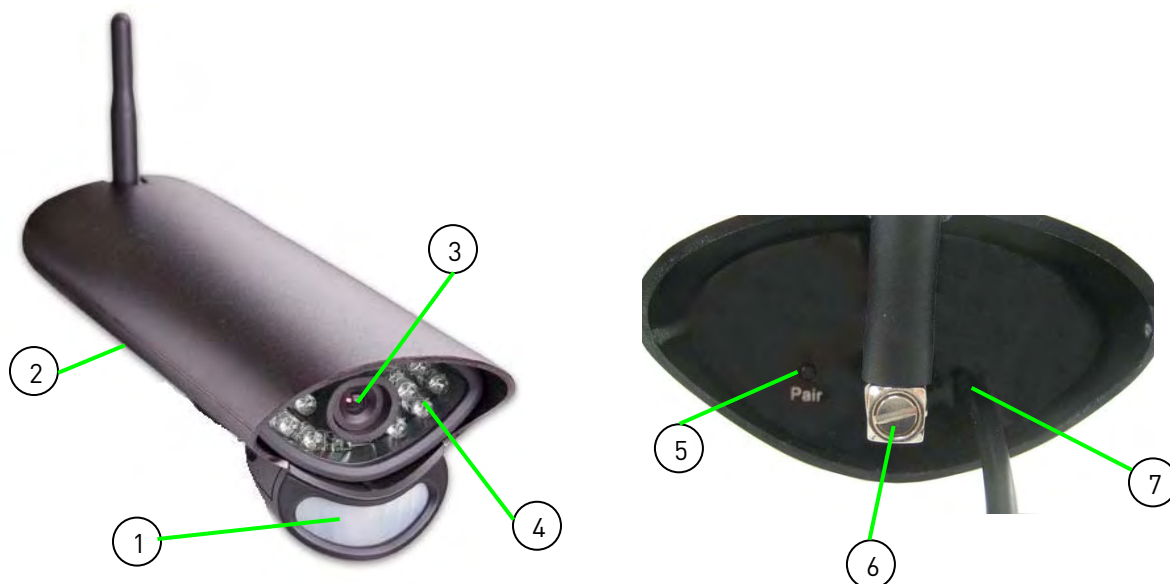
1. **Antenna:** Connection jack for the wireless antenna.
2. **DC:** Connect the included power adapter.
3. **AV Out:** Connect the included Audio/Video cable to display images from the receiver on your TV/monitor.
4. **Alarm Vol.:** Adjust the volume of the motion alarm; will also adjust volume of system “beeps” when you press buttons on the receiver and remote control.

Right Panel



1. **IR Extension:** Connect the included IR extender (optional).
2. **Lock:** Slide to lock the buttons on the wireless receiver.
3. **SD Card:** Insert an SD card (max 16 GB) as shown on the diagram.

Camera



1. **PIR Sensor:** Passive IR motion sensor for more accurate motion recording.
2. **Microphone:** Built-in microphone underneath camera body.
3. **Lens:** Camera lens.
4. **Night Vision IR:** Night vision IR LEDs used for viewing in complete darkness.
5. **Pair:** Pairing button. For more details, see "Pairing" on page 38.
6. **Antenna:** Wireless antenna.
7. **Power Cable:** Connect the included power adapter to the cable extending from the camera.

Remote Control

ATTENTION: Before using the remote control, remove the protective clear plastic tab from the battery cover.

1. **1/▶ II** : Move menu cursor UP; play/pause playback; jump to camera 1 while in Quad Mode.
2. **Enter**: Confirm menu selections (same as OK on the wireless receiver).
3. **4/◀◀**: Move menu cursor LEFT; decrease values in certain menu options; rewind playback; jump to camera 4 while in Quad Mode.
4. **MENU / Back**: Press to open the Main Menu; go back/close menu windows.
5. **Record**: Press **Motion** to enable motion recording – system will ONLY record when motion is detected; press ● to start/stop manual recording.
6. **Volume**: Press to increase/decrease volume during playback. Use the receiver to change volume of buzzer and motion alarm.
7. **Quad**: Press to change the display view to quad (4-way) split-screen.
8. **2/▶▶**: Move menu cursor RIGHT; increase values in certain menu options; increase playback speed; jump to camera 2 while in Quad Mode.
9. **3/■** : Move menu cursor DOWN; decrease values in certain menu options; stop playback; jump to camera 3 while in Quad Mode.
10. **Scan/Del**: Press to delete recorded video files.
11. **Channel**: Press **A** to enable/disable Auto Sequence Viewing Mode; press **M** to manually change the channels (1~4).
12. **AV**: Not used.

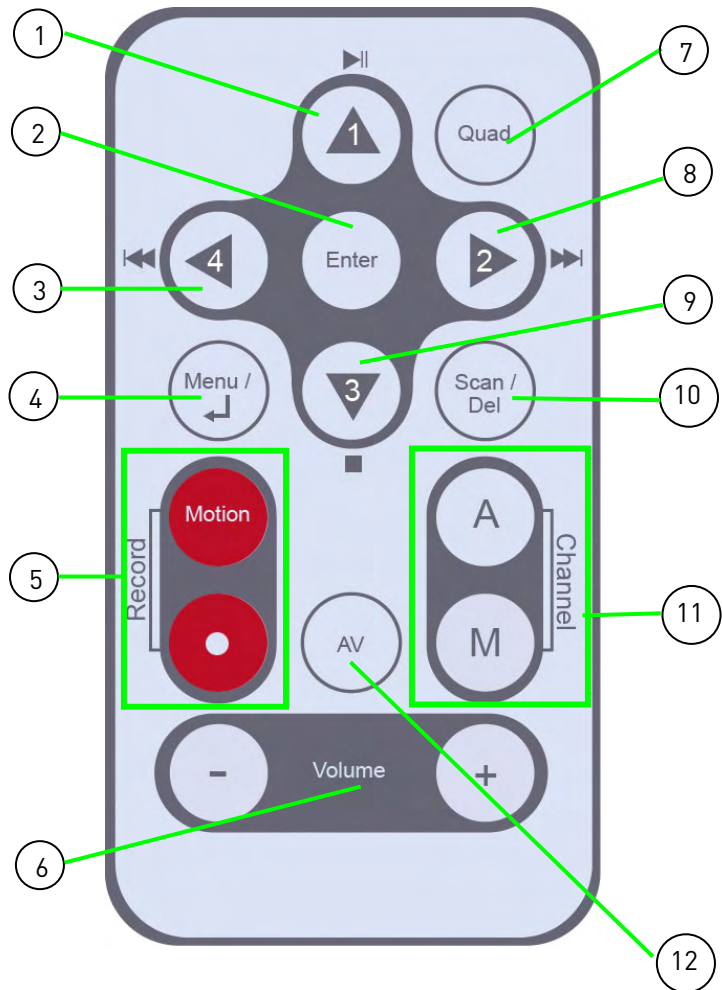


Figure 1.0 Remote Control

Installing the Camera

Before you install the camera, carefully plan where and how it will be positioned, and where you will route the cable that connects the camera to the power adapter.

- Before starting permanent installation, verify its performance by observing the image on a monitor when camera is positioned in the same location/position where it will be permanently installed

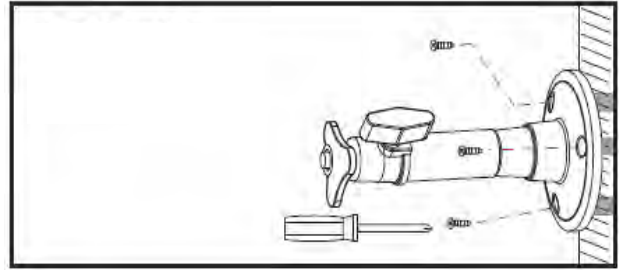


Figure 2.0 Attach stand to mounting surface

Installation Warnings:

- Aim the Cameras to best optimize the viewing area: Select a location for the camera that provides a clear view of the area you want to monitor, which is free from dust, and is not in line-of-sight to a strong light source or direct sunlight
- Avoid installing the cameras where there are thick walls or obstructions between the Cameras and the Receiver
- Select a location for the camera that has an ambient temperature between 14°F~122°F (-10°C ~ 50°C)

To install the camera:

1. Use the included mounting screws to mount the stand to the mounting surface:
 - Mark the position of the screw holes on the wall
 - Drill holes and insert the drywall plugs as needed
 - Firmly attach the stand to the wall using the provided screws
2. Screw on the wireless antenna to the rear panel of the camera.
3. Attach the camera to the mounting stand. Adjust the angle of the camera until the desired view is set. Tighten the thumbscrews to secure the desired camera position.
4. Connect the black power cable extending from the camera to the cable of the **power adapter**; plug the **power adapter** to an outlet or surge protector.



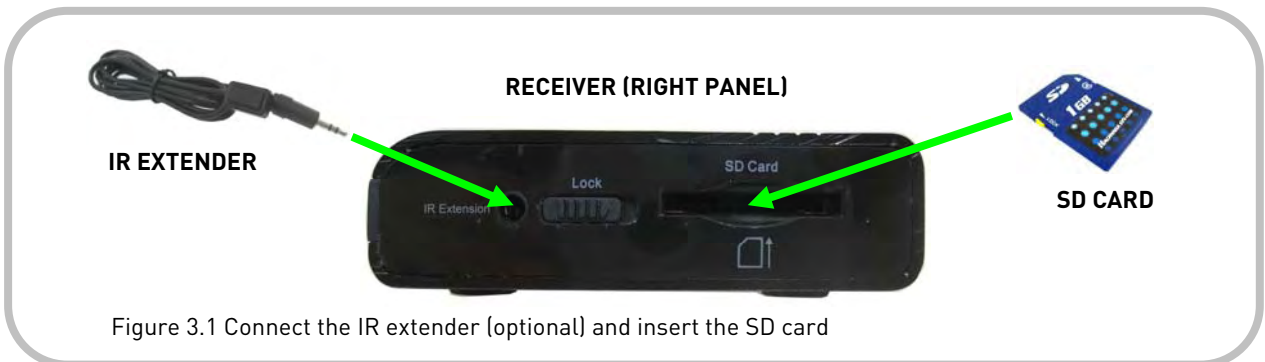
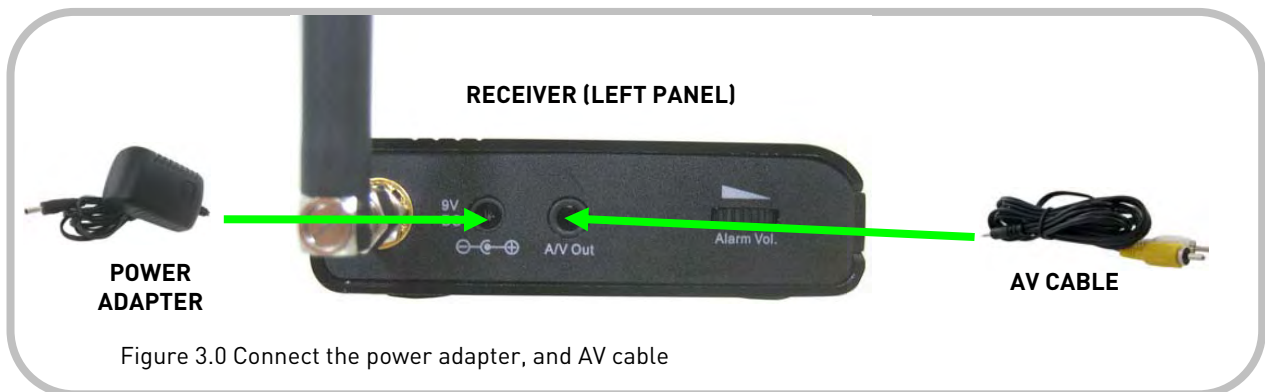
Figure 2.1 Attach the camera to the stand and tighten thumbscrews

NOTE: You can install additional cameras (maximum of 4 cameras). When adding cameras that were not included in the original box, you will need to pair the cameras with the receiver. For details, see "Appendix C: Adding Cameras" on page 49.

Connecting the Wireless Receiver

To set up the wireless receiver:

1. Connect the **Black cable** from the AV cable to **AV Out port** on the left panel of the receiver. Connect the **Yellow video cable** and **White audio cable** (mono) to your TV, DVR, or observation system.
2. Insert the included SD card into the **SD Card slot** on the right panel of the receiver until you hear a “click.”
NOTE: The receiver is compatible with most major brands of SD card up to 16 GB. For recording times on SD cards, see “Appendix F: Estimated Recording Times on SD Cards” on page 53.
3. Place the receiver in a place that will have a clear reception to your camera*.
4. Connect the cable from the **power adapter** to the **9V DC port** on the left panel of the receiver, and then connect the power adapter to an outlet or surge protector.
5. Change the **video input** on your TV or monitor to the corresponding input of the video cable (i.e. Video 1, Video 2, Auxiliary, etc.).
6. **OPTIONAL:** Connect the included **IR extender** to the **IR Extension port** on the right panel of the receiver. Use the IR extender to if you want to hide the receiver from plain sight. You can conceal the sensor of the IR Extender in a bookcase, flowers, etc., and still fully control the system using the included remote control.



*Avoid installing in a location which requires the wireless signal to pass through cement, concrete, and metal structures. This will reduce the range of transmission.

LED Indicators on the Wireless Receiver

Use the LED indicators on the wireless receiver to observe the status of the receiver, cameras, and SD card.



Figure 3.2 LED indicators on wireless receiver

The blue LEDs indicate the following:

- **MANUAL:** Channel switching set to manual
- **AUTO:** Channel switching set to Auto – Auto Sequence Viewing Mode enabled
NOTE: By default, Auto Sequence Viewing Mode is enabled when you first power on the wireless receiver.
- **M:** Manual recording enabled
- **A:** Motion recording enabled
- **NEW:** A new video file has been recorded to the SD card
- **FULL:** The SD card is full
NOTE: The “Full” light will only appear if Overwrite is disabled. For details, see “Overwrite” on page 37.

Using the System

By default, the camera included with your system is automatically paired to the wireless receiver. The camera and receiver will communicate with one another once they are powered on.

On-Screen Display

With camera 1 properly connected and powered on, the system displays a single channel full-screen live view of the camera.

NOTE: You should always power on the cameras before powering on the receiver.

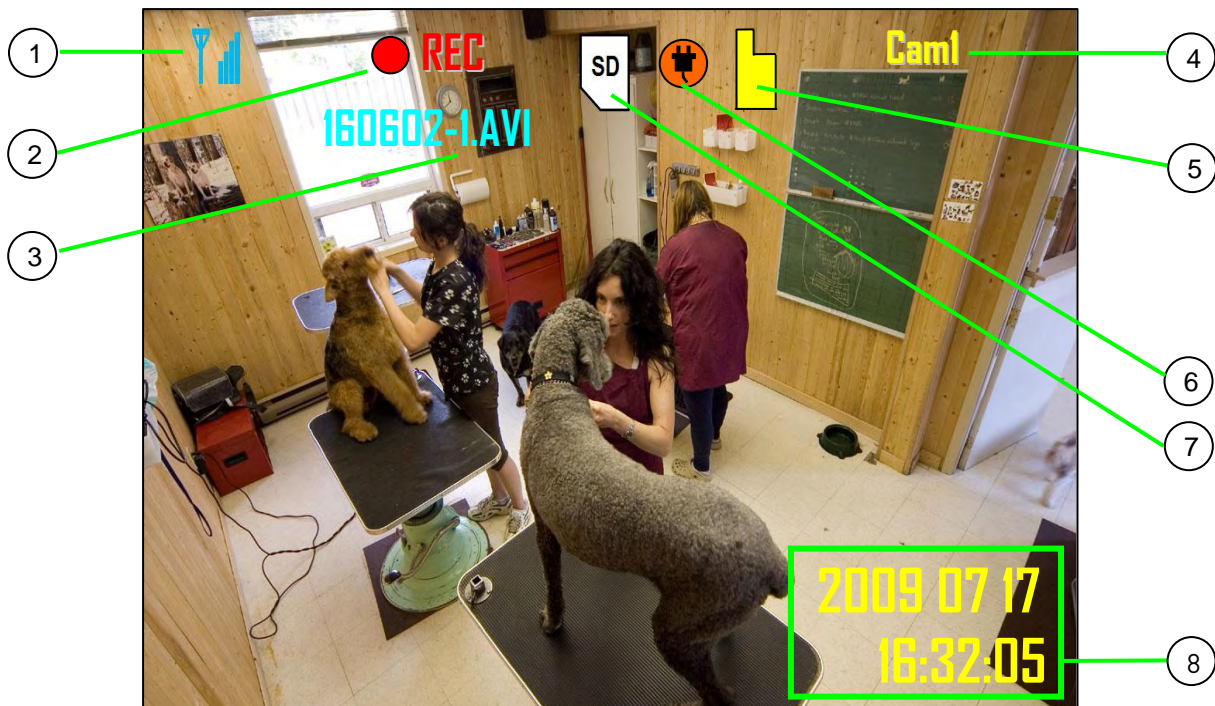


Figure 4.0 Live viewing – single channel

1. **Signal Indicator:** Strength of the wireless signal between the camera and the wireless receiver.
2. **Recording Indicator:** “REC” appears during manual, motion, and schedule recording.
3. **File Name:** Name of the file actively being recorded.
4. **Camera indicator:** Displays the camera you are presently viewing; position of camera indicators shifts to the left side of the screen while in Quad mode.
5. **File Icon:** Flashing yellow icon indicates a new video file is on the SD card.
6. **Power Failure icon:** Flashing icon indicates a power failure occurred while the system was recording.
7. **SD Card icon:** Icon appears when an SD card is present in the receiver; an SD card is required for recording.
8. **Time Stamp:** The current date and time on the system.

On-Screen Display (cont'd.)

1. **Signal Indicator** – The signal indicator shows the strength of the signal being received from the camera. The number of bars in the Signal Indicator shows the strength of the signal – One or No Bars indicates the signal is poor, and 4 bars indicate a very strong signal.

NOTE: Signal Indicator not shown while in Quad Mode.

ATTENTION: If signal is low (e.g. 1 or 2 bars) adjust the antennas, or reposition the cameras or receiver for best performance.

2. **Recording Indicator:** The red REC icon indicates the system is currently recording.
3. **File Name:** Name of the file actively being recorded. This file will appear in the file list on the SD card. The Recording File stamp indicates the hour, minutes, and seconds that the system started recording (see figure 4.2).
4. **Channel Indicator** – Displays the current channel number. Press the **Channel—M button** on the Receiver to switch between available cameras.
5. **File Icon:** Flashes yellow when writing data to the SD card; flashes red when the SC card is full.
6. **Power Failure icon:** Flashing icon indicates a power failure occurred while the system was recording. You may need to manually restore settings or modes on the system after a power failure. For more details, see “Appendix G: Power Failure” on page 54.
7. **SD card icon:** White “SD” icon displays that an SD card is in the wireless receiver.

NOTE: You cannot record without an SD card.

8. **Time Stamp:** The current date and time.

9. **Status Indicator** – The Status indicator message “Connecting” appears when the receiver is trying to locate a camera.

NOTE: There may be temporary signal losses for less than 1 second, due to the connection retrieval process between the Camera and Receiver (when switching between channels). This is a normal operation of the receiver.



Figure 4.1 On-screen display

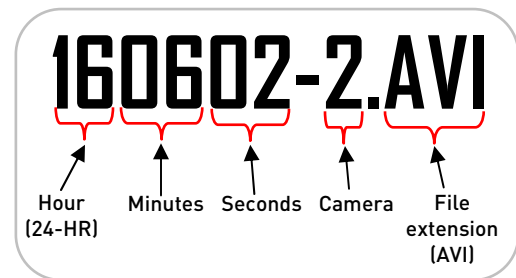


Figure 4.2 Recording File Stamp



Figure 4.3 SD card icon: new file and full



Figure 4.4 Camera Status Indicator

Viewing Modes

There are three different viewing modes available on the system: single channel viewing, Auto Sequence Viewing Mode (view individual channels automatically in sequence), and Quad mode.

To change viewing modes:

- Press the **Channel—A button** to enable Auto Sequence Viewing Mode and switch automatically between channels; press **Channel—M button** to disable Auto Sequence.

OR

- Press the **Channel—M button** repeatedly to switch between channels 1~4

NOTE: By default, Auto Sequence Viewing Mode is enabled when you first power on the system.

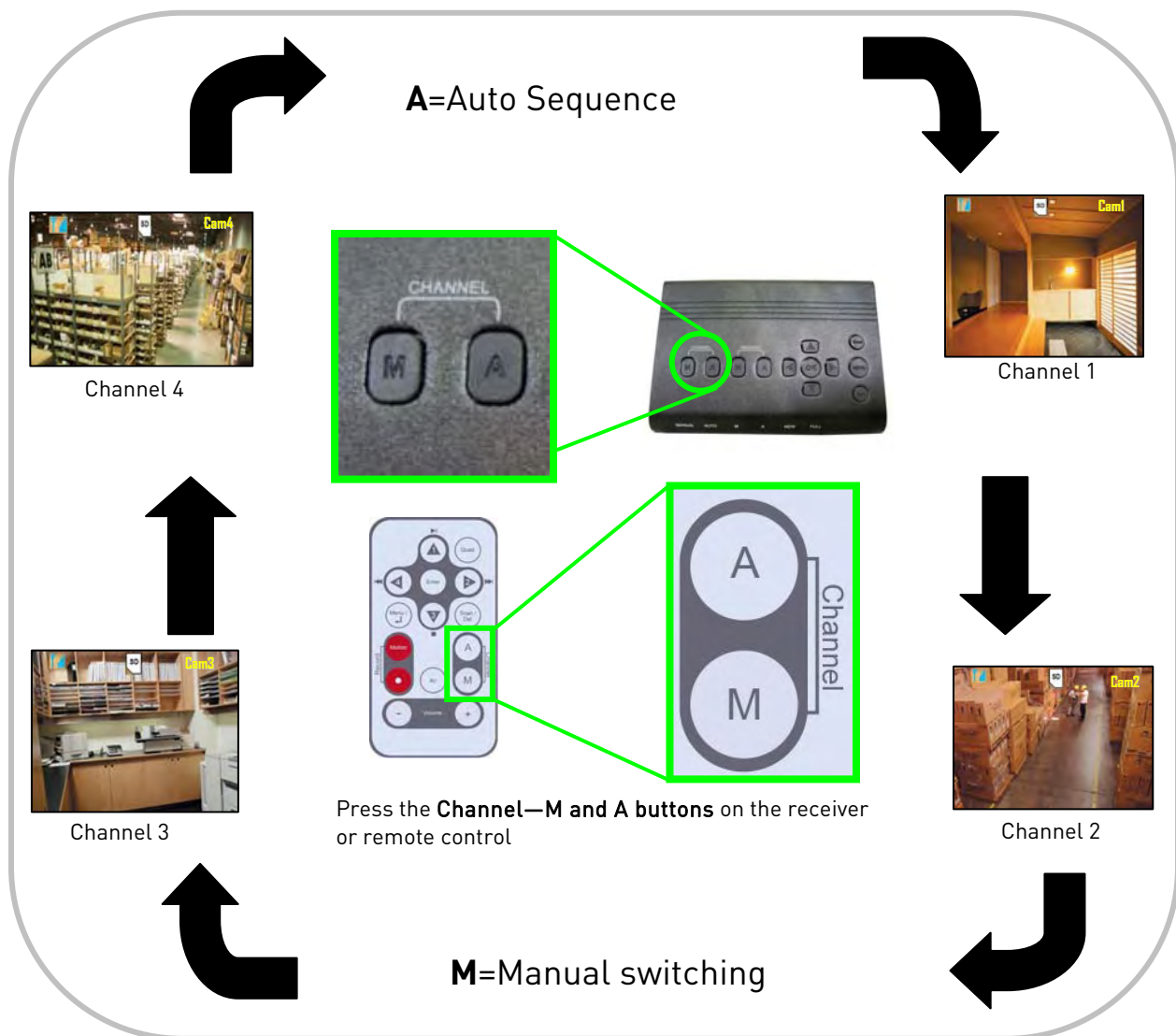


Figure 5.0 View Mode diagram

Quad Mode

Use Quad mode to view up to four cameras simultaneously.

To enable/disable Quad mode:

- Press the **QUAD button** on the wireless receiver or the remote control; The Schedule Recording warning appears briefly on-screen (see figure 5.2), then the Quad display mode begins.

NOTE: The signal indicator or SD card icon are not shown while the receiver is in Quad mode.

NOTE: You cannot access the Main Menu while the system is in Quad Mode.



Figure 5.1 Quad Mode

Quad mode is also available while in Zoom mode. For details on using Zoom, see “Zoom” on page 43.

ATTENTION: While in Quad Mode, you cannot turn on Schedule Recording.

**Schedule
Recording Cannot
begin because you
are in Quad Mode**

Recording Tip!

Using Quad Mode with Motion Recording is a highly recommended recording solution. For more details, see “Motion Recording” on page 25.

Figure 5.2 Quad Mode warning

Setting the Time

It is highly recommended to set the time on the system prior to recording. You need to set the correct date and time in order to use Schedule Recording. For more details, see "Motion Recording" on page 25.

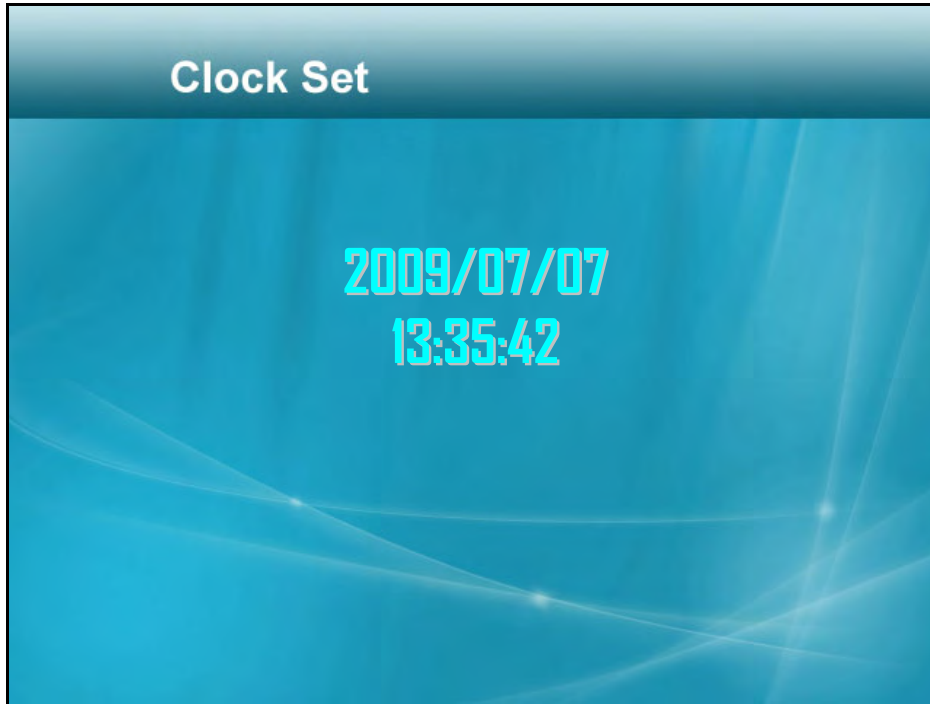


Figure 6.0 Clock Set

To set the date and time:

1. Press the **MENU** button to open the Main Menu.
2. From the Main Menu, select **Setting** and press the **Enter/OK** button.
3. From the Setting menu, select **Date & Time** and press the **Enter/OK** button.
4. Press **RIGHT/LEFT** to move the **cursor**; press **UP/DOWN** to change the **year, month, day, hour, minutes, and seconds**.

NOTE: The system uses a 24-hour clock.

5. Press **Enter/OK** to save your settings.
6. Press **MENU** to close any remaining menu windows.

The date and time appear in the bottom-right corner of the main display screen.

NOTE: There no daylight savings time (DST) setting on the system. DST must be set manually if necessary.



Recording

Three recording modes are available on the system: Manual Recording, Schedule Recording, and Motion Recording.

NOTE: An SD card must be inserted in the wireless receiver in order to record. You should always format the SD card prior to initial recording. For details, see “Format” on page 45.

NOTE: The system can record video to an SD card *one channel at a time*.

NOTE: Recording overrides other actions on the receiver. You must stop recording on the system in order to perform other actions, such as opening the Main Menu, Quad Mode, etc.

Recording Mode Summary

Mode	Description
MANUAL RECORDING	<ul style="list-style-type: none"> • Continuous recording from one camera • Press the Record—● button on the remote control or the RECORD—M button on the receiver to start/stop manual recording • Cannot record while in Quad mode • Cannot record while in Auto Sequence Viewing Mode
SCHEDULE RECORDING	<ul style="list-style-type: none"> • Continuous recording from one camera or from Auto Sequence Viewing Mode (system will record from one camera at a time) • ATTENTION: Turn off Manual Recording and Motion Recording to enable Schedule Recording • Enter a Start and Stop Time from Main Menu>Record>Schedule Record • Cannot enable Schedule Recording while in Quad Mode
MOTION RECORDING (AUTO)	<ul style="list-style-type: none"> • System only records when motion is detected by a camera • Compatible with Quad Mode (recommended) • Compatible with Auto Sequence Viewing Mode • Press the Motion button on the remote control or the RECORD—A button on the receiver to start/stop Motion Recording

For more details on each recording mode, see “Manual Recording” starting on page 22.

Manual Recording

Manual Recording allows you to manually start/stop recording from *one channel at a time*. You cannot record while in Quad mode.

You can also record while in Zoom mode. For details on using Zoom, see “Zoom” on page 43.

NOTE: You cannot change channels or enable Auto Sequence Viewing Mode during Manual Recording.



Figure 7.0 Recording indicated by the OSD

To enable Manual Recording:

1. Select a channel (1~4) on the wireless receiver or from the remote control.
2. Press the **Record—● button** on the remote control or **RECORD—M button** on the wireless receiver. A blue LED will light up under RECORD—M on the wireless receiver.
3. To stop Manual Recording, press the **Record—● button** on the remote control or **RECORD—M button** on the wireless receiver again.

When Should I Use Manual Recording?

- Emergency recording
- Low traffic environments



Schedule Recording

Use Schedule Recording to have the system automatically record continuously from a selected camera or from Auto Sequence Viewing Mode according to a start and stop time. You must set a Recording Schedule in the main menu in order to use Schedule Recording.

NOTE: Please ensure you have set the date and time on the receiver prior to setting a recording schedule.

NOTE: Auto Sequence Viewing Mode *is* available during Schedule Recording. However, the system will record video of the sequence itself. Therefore, you cannot playback video of individual cameras.



Figure 7.1 Start and Stop Times for Schedule Recording

To set a recording schedule:

1. Press the **MENU button** to open the Main Menu.
2. Select **Record** and press the **Enter/OK button**.
3. Press **RIGHT/LEFT** to move the **cursor** (yellow); press **UP/DOWN** to change the **hour** and the **minutes**.

NOTE: You need to press RIGHT to move the cursor from Start Time to Stop Time.

4. Press the **Enter/OK button** to save your schedule.
5. Press **MENU** until all menu windows are closed.

NOTE: You cannot enable Schedule Recording if the system is in Quad Mode.

To enable schedule recording:

1. Disable ALL RECORDING on the system:

- If the system is in Manual Recording, press the **Record—● button** on the remote control or the **RECORD—M button** on the wireless receiver so the blue LED *does NOT appear* on the wireless receiver
- If the system is in Motion Recording, press the **RECORD—A/Motion button** so the blue LED *does NOT appear* on the wireless receiver

ATTENTION: Manual Recording, Motion Recording, and Quad Mode will override Schedule Recording. If you wish to use Schedule Recording, you must ensure Manual Recording, Motion Recording, and Quad Mode are disabled.

2. Select a **channel** (1~4) on the wireless receiver or from the remote control

OR

Press the **CHANNEL—A button** to enable Auto Sequence Viewing Mode.

When the Start Time arrives, recording begins. The “REC” indicator appears on-screen.

NOTE: You cannot use Quad Mode with Schedule Recording.

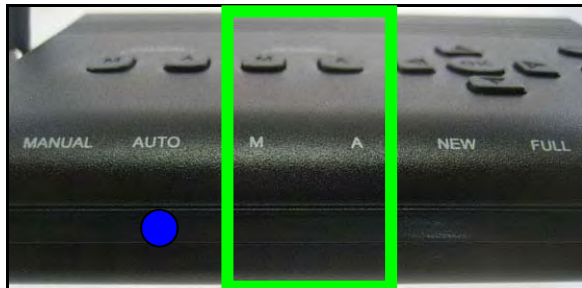


Figure 7.2 Schedule Recording on the receiver – no blue LEDs should be lit up beneath Manual Recording (M) and Motion Recording (A)

Stopping Schedule Recording

When the Stop Time arrives, the system stops recording. However, if necessary, you can also stop Schedule Recording manually.

To stop Schedule Recording:

- Press **Record—● button** on the remote control or the **RECORD—M button** on the wireless receiver to stop schedule recording

NOTE: If you stop Schedule Recording, you cannot resume Schedule Recording. You will need to enter new Start and Stop times in the Schedule Record menu.

When Should I Use Schedule Recording?

- It is recommended to use Schedule Recording for capturing a sensitive or important target that needs to be recorded *daily*, i.e. a cash register, safe, shipping & receiving docks, etc.
- During the day in high traffic environments

Motion Recording

Use Motion Recording to have the system only record when motion is detected by one of the cameras. The camera that appears on-screen is the only camera that is recording.

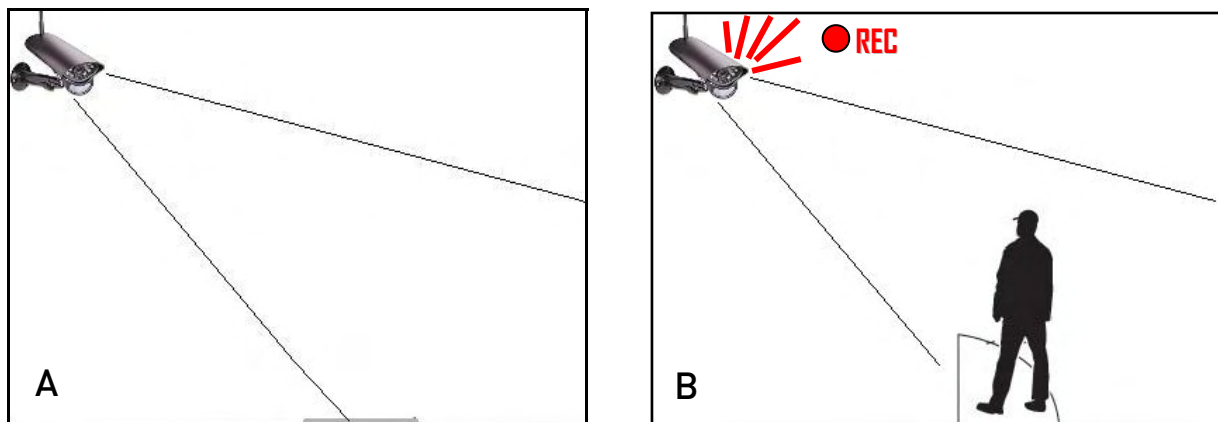


Figure 7.3 Recording triggered by motion during the Motion Recording

To enable Motion Recording:

1. Press **Motion** on the remote control or the **RECORD—A button** on the wireless receiver. A blue LED will light up beneath RECORD—A on the receiver.
2. Perform one of the following:
 - **Enable Quad Mode** (*recommended*): Press the **Quad button**. When motion is detected, the system will display the triggered camera on-screen. When motion recording is complete, the view will return to Quad Mode.
 - **Enable Auto Sequence Viewing Mode**: Press the **CHANNEL—A button**. When motion is detected, the system will display the triggered camera on-screen. When motion recording is over, Auto Sequence Viewing Mode will continue as normal.
 - **Change channels manually**: Press the **CHANNEL—M button** on the wireless receiver or remote control to select a channel.

ATTENTION: If you manually select a channel while the system is in Motion Recording Mode, motion recording will *ONLY apply to the selected channel*. For example, with Motion Recording enabled, you manually select channel 3; if motion were to occur in view of camera 1, the system would NOT RECORD video from channel 1.

3. Press **Motion** on the remote control or the **RECORD—A button** on the wireless receiver again to stop Motion Recording. The blue LED will turn off on the receiver.

The “REC” indicator will *only* appear when motion is detected by one of the cameras on-screen.

By default, the system is set to record for 15 seconds after the triggered motion event. For details on adjusting the motion recording time, see “Trigger Record” on page 35.

When Should I Use Motion Recording?

- Low traffic areas or non-sensitive/non-critical recording environments
- Overnight recording

NOTE: In the event of a power failure, the system will restart in Auto Sequence Mode + Motion Recording when power is restored. For more details, see "Appendix G: Power Failure" on page 54.

Recording Tip!

If you are using *more than one camera*, it is highly recommended to use *Quad Mode with Motion Recording*. Quad Mode allows you to see all four cameras at once. When motion is detected, the triggered camera will appear on-screen. After motion recording is complete, the receiver will return to Quad Mode.



System in Quad Mode with Motion Recording



Camera 2 detects motion, so the system starts recording and camera 2 is displayed on-screen



Once motion recording is finished, the system returns to Quad Mode

Viewing Recorded Video

With video recorded on the SD card, you can open the File menu to playback the video files.

ATTENTION: All recording must be stopped on the system prior to playing back saved video files.

You can playback recorded video on the system (when connected to a TV or monitor) or directly from the SD card – simply connect the SD card to your computer using a compatible SD card reader.

Viewing Video Using the System

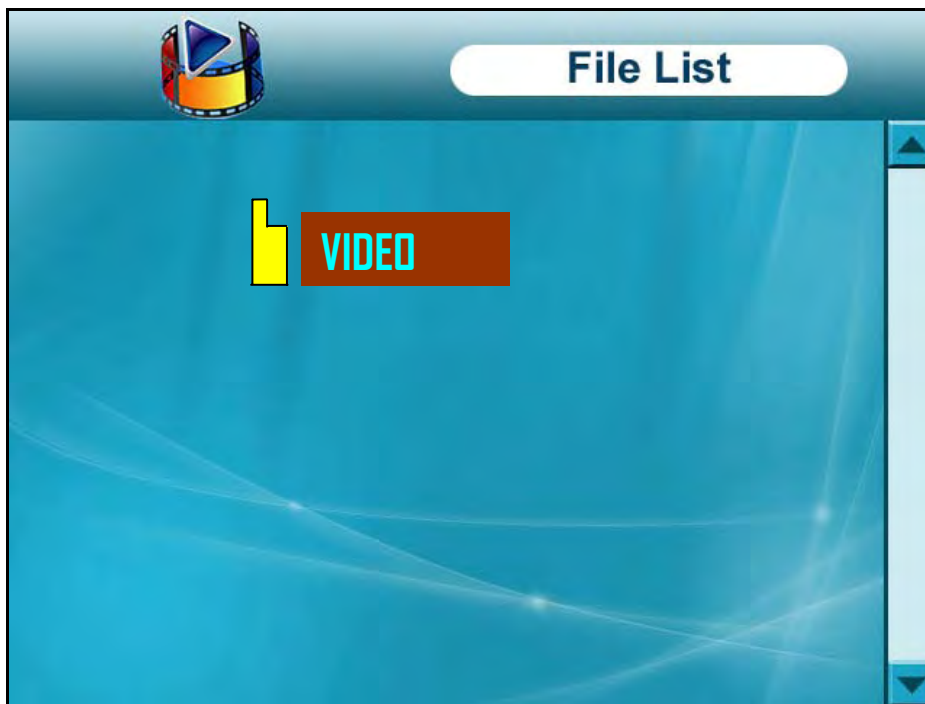


Figure 8.0 File list – root menu

To playback recorded video on the system:

1. Stop all recording on the system.
2. Press the **Enter/OK button**. The File menu opens.
3. Select the **VIDEO** folder and press **Enter/OK button**.

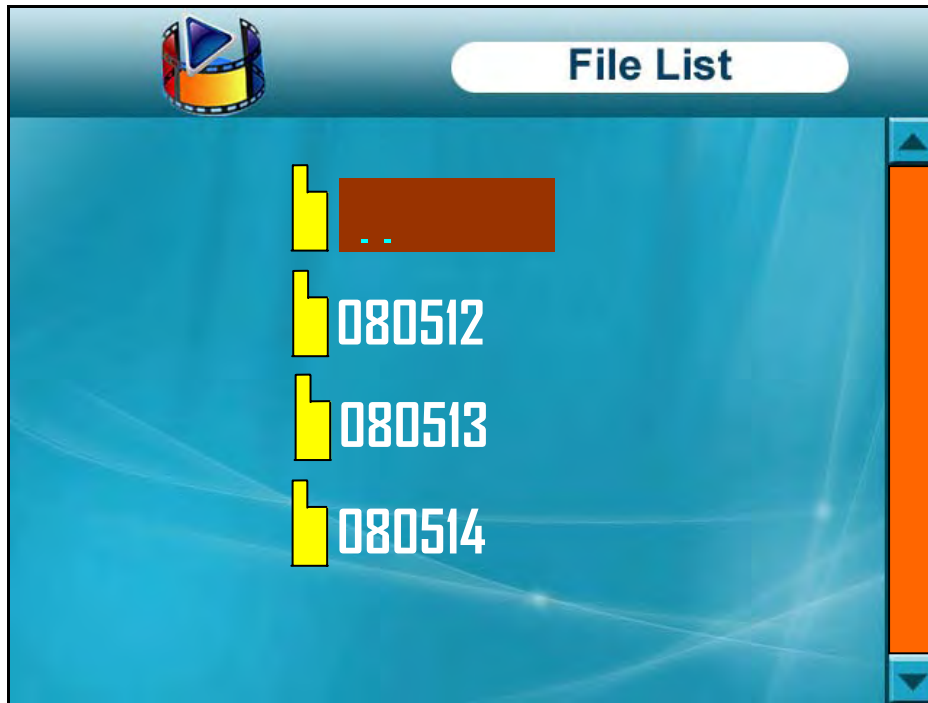


Figure 8.1 File list – Date folders (oldest on top)

4. Select a **folder** and press the **Enter/OK button**. Folders are labeled by date (yymmdd): e.g. *080512*. Select **[. .]** and press the **Enter/OK button** to go up a level.
5. Select a **file** from the list and press the **Enter/OK button**. The selected file loads and playback begins.

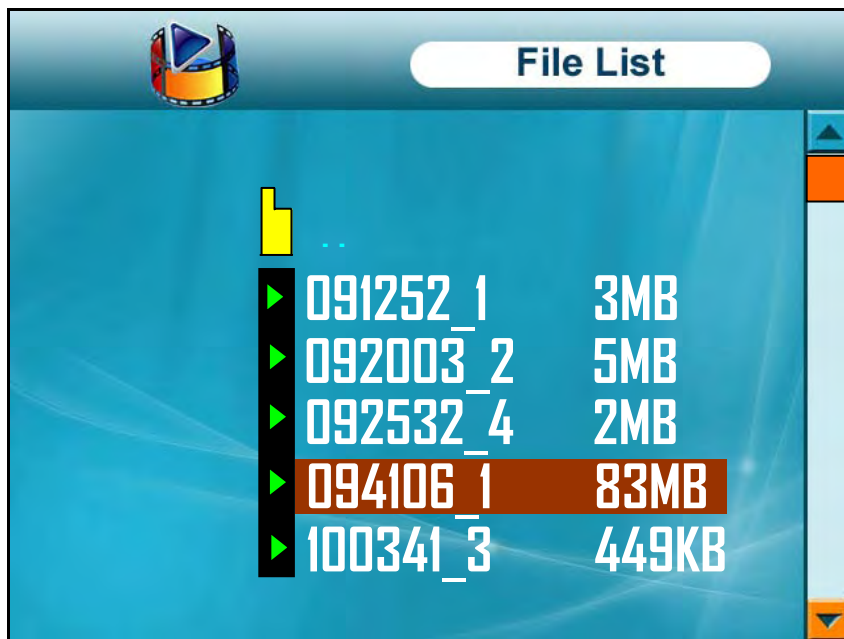


Figure 8.2 Video files



Controlling Playback

Once the file begins playing, use the buttons on the remote control or wireless receiver to control playback.

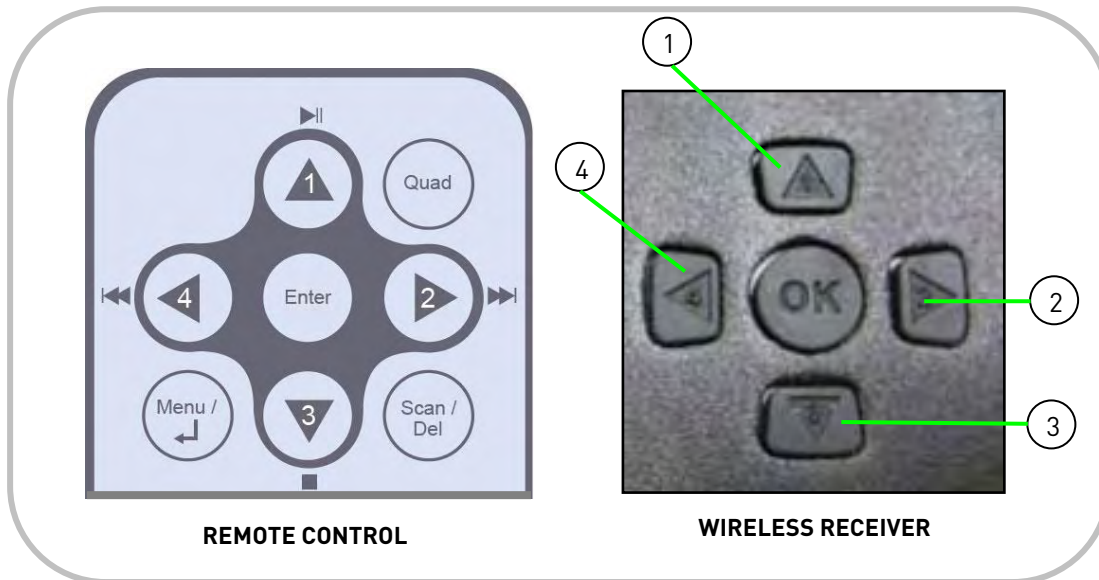


Figure 8.3 Playback buttons on the remote control and wireless receiver

1. ▶ || : Play/Pause playback; restart video from the beginning.
2. ►►: Fast forward playback 2X, 4X, 8X, 16X, 32X, and 64X. During fast-forward, press ▶ || to pause and then press ▶ || again to play.
3. ■: Stop playback.
4. ◀◀: Rewind playback 1X, 2X, 4X, or 8X. During rewind, press ▶ || to pause, then press ▶ || again to play.

- *REMOTE CONTROL*: Press the **Volume + / - buttons** to increase/decrease volume during playback
- Press the **MENU button** on the remote control or wireless receiver to return to the file list

Viewing Video Directly From the SD Card

You can view the saved video files on your computer (PC or Mac) by using an SD card reader (not included). Saved video files are in AVI format.

NOTE: Some PCs and Macs may have an SD card reader built-in. Please refer to your computer's instruction manual for more details.

PC

ATTENTION: The XviD, DivX, or FFDSHow codec is required if attempting to view the video files in Windows Media Player™. You can also view AVI files natively in other media players such as VLC and DivX Player.

To playback recorded video on a PC:

1. Remove the SD card from the wireless receiver by gently pushing on the SD card. The SD card will pop out from the slot.
2. Insert the SD card into an SD card reader (not included) connected to your PC. Your PC should load the SD card as a new Removable Drive.
3. View files and folders on the SD card. You should see a folder labeled "VIDEO."
4. Open the **VIDEO** folder and then open one of the **Date** folders (yyymmdd). The AVI file list appears.
5. Double-click any of the AVI files. The video will begin playing in your default AVI media player.

Mac

ATTENTION: Additional codecs are required if attempting to view AVI files in QuickTime. VLC Player is recommended for viewing AVI files on a Mac. VLC is an open-source freeware application available at www.videolan.org

To playback recorded video on a Mac:

1. Remove the SD card from the wireless receiver by gently pushing on the SD card. The SD card will pop out from the slot.
2. Insert the SD card into an SD card reader (not included) connected to your Mac. Your Mac should load the SD card as a new Disk Image.
3. View files and folders on the SD card. You should see a folder labeled "VIDEO."
4. Open the **VIDEO** folder and then open one of the **Date** folders (yyymmdd). The AVI file list appears.
5. Double-click any of the AVI files. The video will begin playing in your default AVI media player.

For details on deleting files on the system, see "Appendix E: Deleting Video Files on the System" on page 52.

Using the Main Menu

Use the Main Menu to configure camera and receiver settings.

To open the Main Menu:

- Press the **MENU button** on the wireless receiver or the remote control

NOTE: Make sure the display is in single channel full-screen view prior to opening the Main Menu



Figure 9.0 Main Menu

1. **Camera On/Off:** Enable/disable connected cameras.
2. **Record:** Configure recording parameters, set a recording schedule, and enable/disable overwrite.
3. **Pairing:** Pair additional cameras to the receiver. For full details, see “Appendix C: Adding Cameras” on page 49.
4. **Setting:** Configure brightness, set the time, and format the SD card.

Camera On/Off

Use the Camera On/Off menu to show/hide camera channels on the main display screen. For example, if you disable camera 3, it will not appear in single channel full-screen, Auto Sequence Viewing Mode, or in Quad mode.

NOTE: If a power failure occurs on your system, you may need to re-configure your Camera On/Off settings. For more details, see "Appendix G: Power Failure" on page 54.



Figure 9.1 Camera On/Off menu

Make sure cameras are properly connected and paired to the receiver before enabling.

To enable/disable cameras:

1. From the Main Menu, select **Camera On/Off** and press the **Enter/OK** button.
2. Select the desired camera and press **RIGHT/LEFT** to select **On** or **Off**.

NOTE: The currently selected camera will have On/Off highlighted in **RED**.

3. Press the **Enter/OK** button.
4. Press the **MENU** button to exit.

NOTE: Any disabled channels will be blacked out in Quad mode.

Record

Use the Record menu to change image quality, set motion recording time, set a recording schedule, and enable/disable overwrite.



Figure 10.0 Record menu

The Record menu contains the following sub-menus:

- **Quality:** Set the image resolution to 320x240 (QVGA) or 640x480 (VGA)
- **Trigger Record:** Set the recording time when motion is detected by a camera
- **Schedule Record:** Set start and stop times for Schedule Recording
- **Overwrite:** Enable/disable overwrite of the SD card

Quality



Figure 10.1 Quality menu — 320x240 (QVGA) and 640x480 (VGA)

To change the image quality:

1. From the Main Menu, select **Record** and press the **Enter/OK button**.
2. From the record menu, select **Quality** and press the **Enter/OK button**.
3. Press **LEFT/RIGHT** to select **320x480** (QVGA) or **640x480** (VGA).
4. Press the **Enter/OK button** to save your settings.
5. Press the **MENU** button until all menu windows are closed.

VGA or QVGA?

Record at VGA resolution (640x480) for the best video performance or QVGA resolution (320x240) for a higher video frame-rate.

Trigger Record

Use the Trigger Record menu to set the length of the time for the system to record after motion is detected by a camera.



Figure 10.2 Trigger Record menu

To change the motion recording time:

1. From the Main Menu select **Record** and press the **Enter/OK button**.
2. From the Record menu select **Trigger Record** and press the **Enter/OK button**.
3. Select **5 seconds**, **15 Seconds** or **30 Seconds** and press the **Enter/OK button**.
4. Press the **MENU** button until all menu windows are closed.

Schedule Record

Use the Schedule Record menu to set start and stop times for Schedule Recording. During this time block, the system will record continuously from one specific camera, or from any cameras in Auto Sequence Viewing Mode.

NOTE: The time uses the 24-hour clock.



Figure 10.3 Recording Schedule

To set a recording schedule:

1. From the Main Menu, select **Record** and press the **Enter/OK button**.
2. From the Record menu, select **Schedule Record** and press the **Enter/OK button**.
3. Press **RIGHT/LEFT** to move the **cursor** (yellow); press **UP/DOWN** to change the **hour** and the **minutes**.

NOTE: You need to press RIGHT to move the cursor from Start Time to Stop Time.

4. Press the **Enter/OK button** to save your schedule.
5. Press the **MENU button** until all menu windows are closed.
6. Disable Manual and Motion Recording on the system.

NOTE: Manual Recording and Motion Recording will override schedule recording. For details, see "Schedule Recording" on page 23.

NOTE: You cannot enable Schedule Recording if the system is in Quad Mode. For details, see "Quad Mode" on page 19.

Overwrite

Use the overwrite feature to have the system overwrite the oldest recorded data on the SD card once the SD card is full.

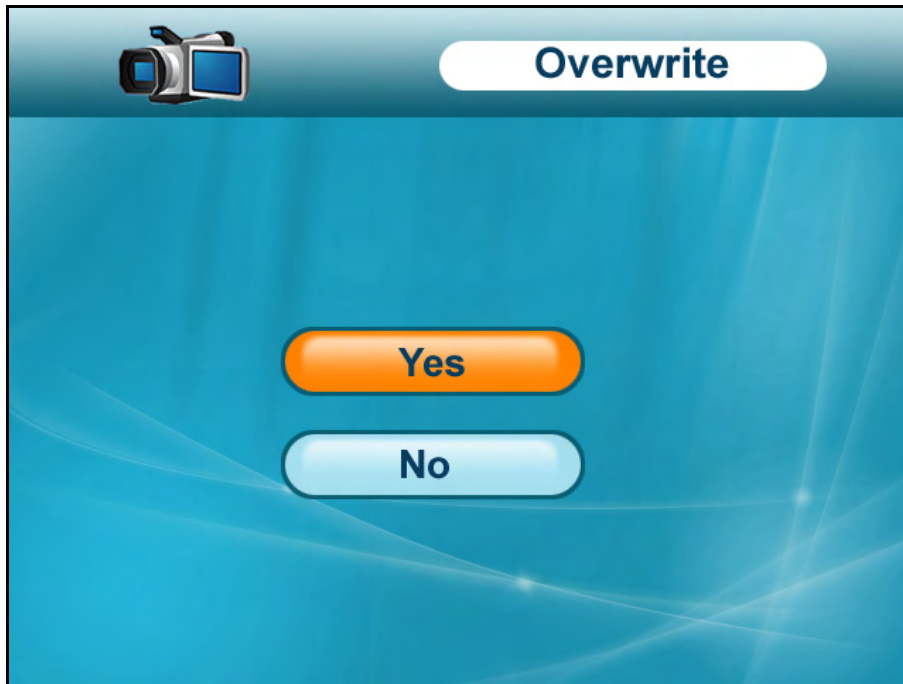


Figure 10.4 Overwrite enable/disable

To enable overwrite:

1. From the Main Menu select **Record** and press the **Enter/OK button**.
2. From the record Menu select **Overwrite** and press the **Enter/OK button**.
3. Select **Yes** and press the **Enter/OK button**.
4. Press the **Menu** button until all menu windows are closed.

NOTE: If you do not enable Overwrite, the system will prompt you when the SD card is full (flashing red icon). Also, when the SD card is full, a blue LED will light up under "FULL" on the wireless receiver. You will need to manually delete files from the SD card or insert a new SD card into the wireless receiver. For details, see "Appendix E: Deleting Video Files on the System" on page 52.

Pairing

Use the Pairing menu to “pair” (add) additional cameras to the system (up to four). By default, the camera included with your system is automatically paired to channel 1 on the wireless receiver. The camera and receiver will communicate with one another once they are powered on.

What is Pairing?

“Pairing” is an electronic handshake between wireless devices. Wireless devices and components need to be paired in order to communicate with each other.

Pairing will assign each additional camera to a different channel on the wireless receiver.

NOTE: It is highly recommended to pair each additional camera to the wireless receiver prior to permanently mounting the cameras.



Figure 11.0 Pairing menu icon



Figure 11.1 Pairing menu

To pair an additional camera:

1. Connect the camera to a power outlet. DO NOT permanently mount the camera.
2. Press **MENU** on the wireless receiver or remote control.
3. From the Main Menu, select **Pairing** and press the **Enter/OK button**.
4. Select **Camera 2**, **Camera 3**, or **Camera 4** and press the **Enter/OK button**.
 - NOTE:** By default, the camera included with your system is paired as Camera 1 (channel 1).
5. Following the on-screen prompt, press the **Pair button** on the rear panel of the camera. You have **30 seconds** to press the PAIR button on the camera. Once paired, the camera will be immediately displayed on-screen.

NOTE: If you do not press the Pair button on the camera during the 30 second pairing window, repeat steps 2-5 to try the pairing process again.

Once the camera is paired you can permanently mount the camera to a desired location.

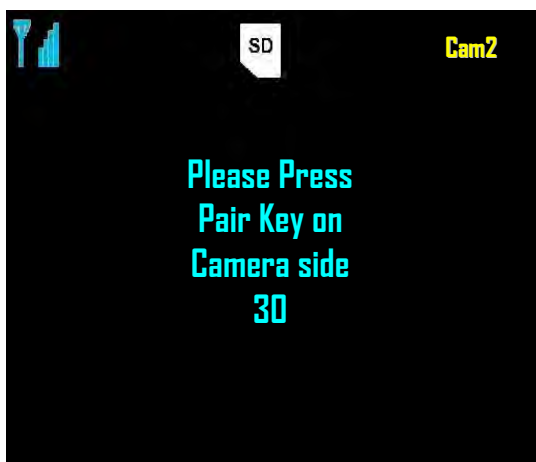


Figure 11.2 Pairing screen

At the pairing screen, you have 30 seconds to press the PAIR button on the rear panel of the camera.

Settings

Use the Settings menu to set the system time, change display options, and format the SD card.

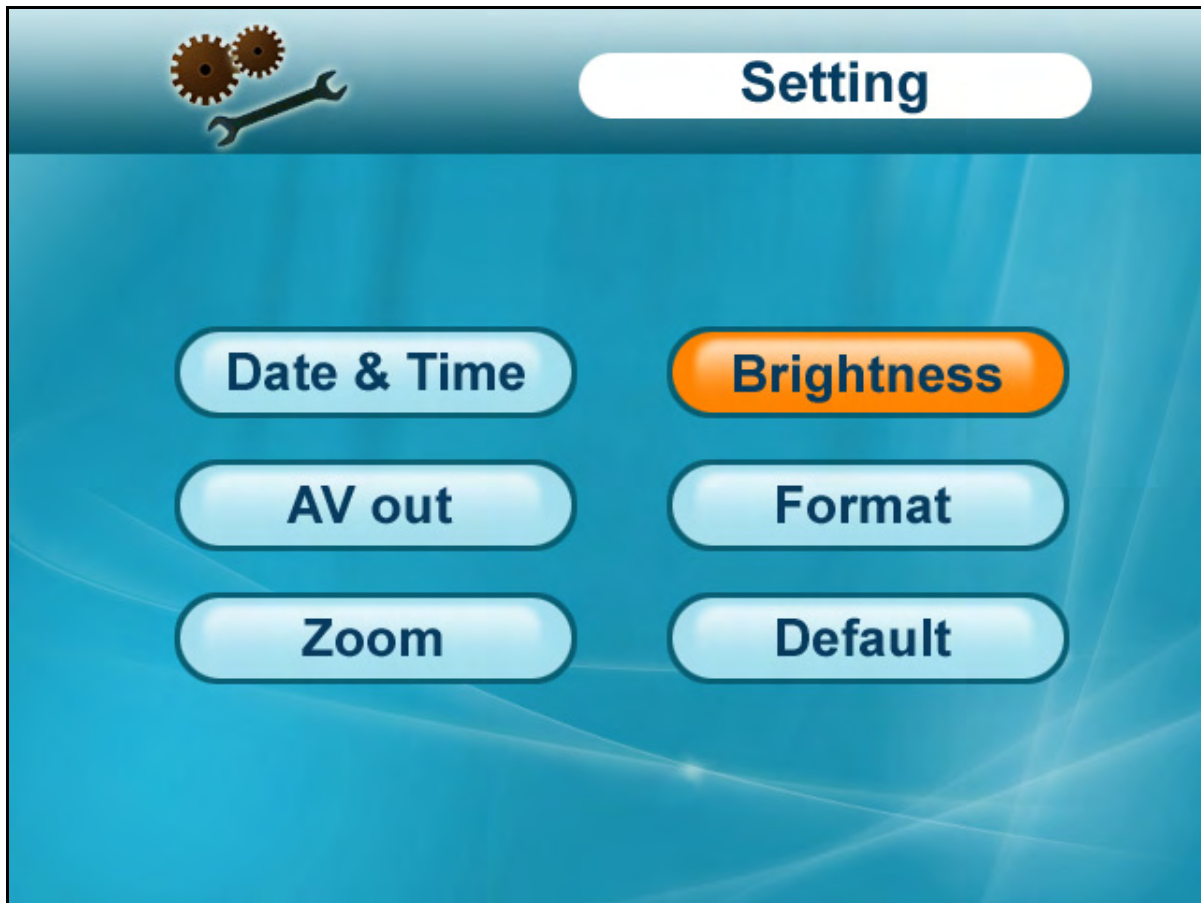


Figure 12.0 Settings menu

The Settings menu contains the following sub-menus:

- **Date & Time:** Set the date and time on the system
- **AV out:** Select the TV system for audio/video output
- **Zoom:** Set 1X or 2X digital zoom on cameras
- **Brightness:** Adjust screen brightness level
- **Format:** Format the SD card
- **Default:** Restore the system to factory settings

Date & Time

Use the Date & Time menu to set the time and date on the system. You *must* set the date and time in order to use Schedule Recording. For details, see "Schedule Recording" on page 23.

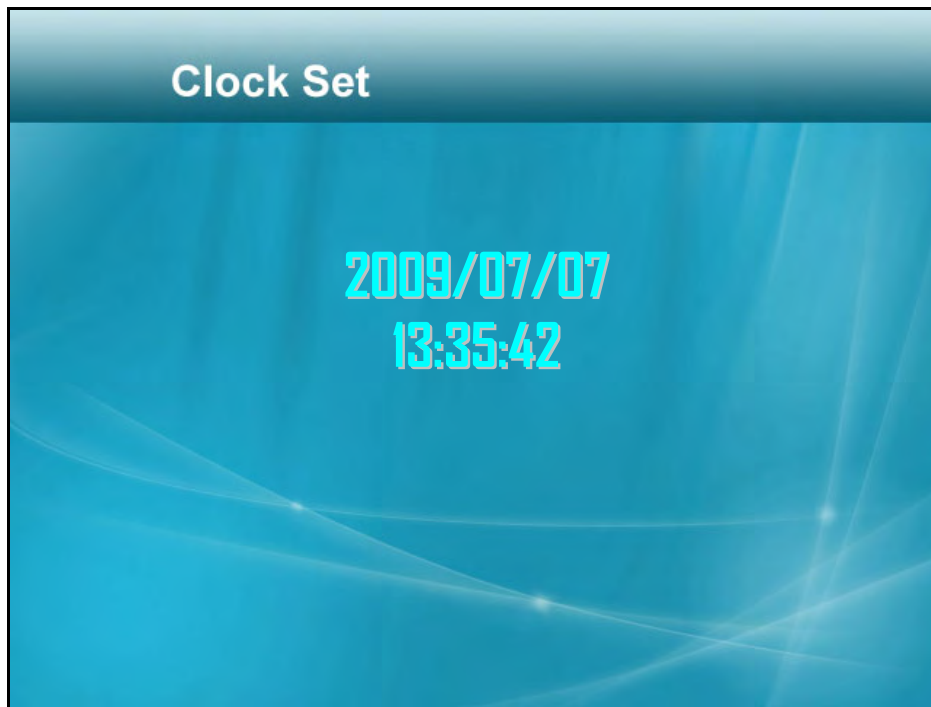


Figure 12.1 Clock Set

To set the date and time:

1. From the Main Menu, select **Setting** and press the **Enter/OK button**.
2. From the Setting menu, select **Date & Time** and press the **Enter/OK button**.
3. Press **RIGHT/LEFT** to move the **cursor**; press **UP/DOWN** to change the **year, month, day, hour, minutes, and seconds**.

NOTE: The system uses a 24-hour clock.

4. Press the **Enter/OK button** to save your settings.
5. Press the **MENU** button until all menu windows are closed.

AV Out

Use the AV out menu to select the TV system for the wireless receiver.

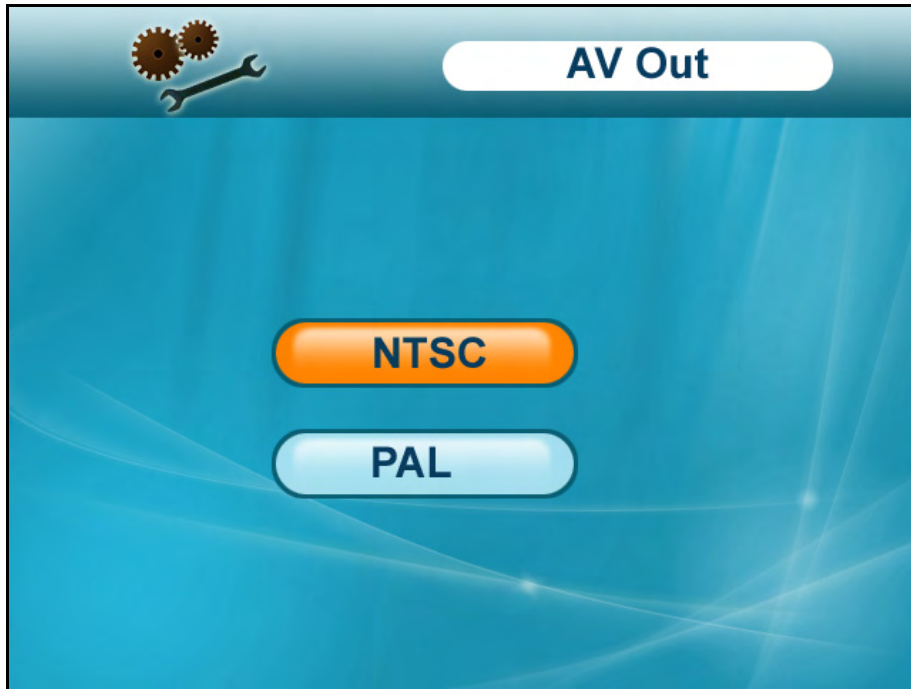


Figure 12.2 AV out menu

To select the TV system:

1. From the Main Menu, select **Setting** and press the **Enter/OK button**.
2. From the Settings menu, select **AV out** and press the **Enter/OK button**.
3. Select **NTSC** (North America) or **PAL** (UK/Europe) and press the **Enter/OK button**.
4. Press the **MENU** button until all menu windows are closed.

Zoom

Use the zoom menu to enable 1X and 2X digital zoom on the cameras. While zoomed in, you can scan the image and view channels in full-screen.

NOTE: Zoom is intended as a temporary setting that is applied to ALL CHANNELS. When you are finished using zoom, you should return the view to 1X view.

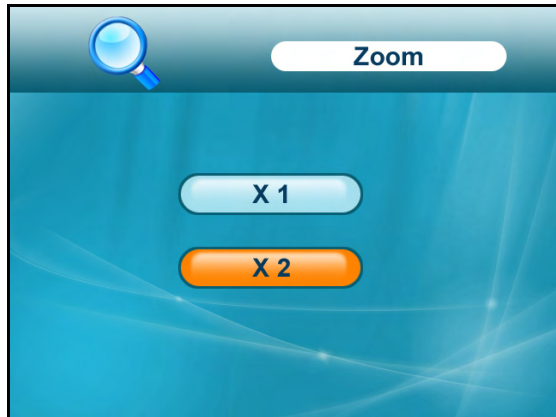


Figure 12.3 Zoom menu

To set the zoom:

1. View camera 1, 2, 3 or 4 in single-channel full-screen.
2. From the Main Menu, select **Setting** and press the **Enter/OK button**.
3. From the Settings menu, select **Zoom** and press the **Enter/OK button**.
4. Select **X 1** or **X 2** and press the **Enter/OK button**.
5. Press **MENU** until all menu windows are closed. The selected camera will be shown on the main display in 2X zoom.

While zoomed in you can perform the following:

- Press **LEFT/RIGHT/UP/DOWN** to scan the image.
- Press **CHANNEL—M** to change channels manually (you can only change channels using the CHANNEL—M button while zoomed in)
- Press **CHANNEL—A** to enable Auto Sequence Viewing Mode
- Press the **Record—● button** on the remote control or **RECORD—M button** on the wireless receiver to start/stop manual recording
- Press **QUAD** to view Quad mode – all channels will be zoomed-in

To disable zoom:

1. Open the Zoom menu.
2. Select **X 1** and press the **Enter/OK button**.
3. Press the **MENU** button until all menu windows are closed.

Brightness

Use the Brightness menu to adjust the screen brightness level.

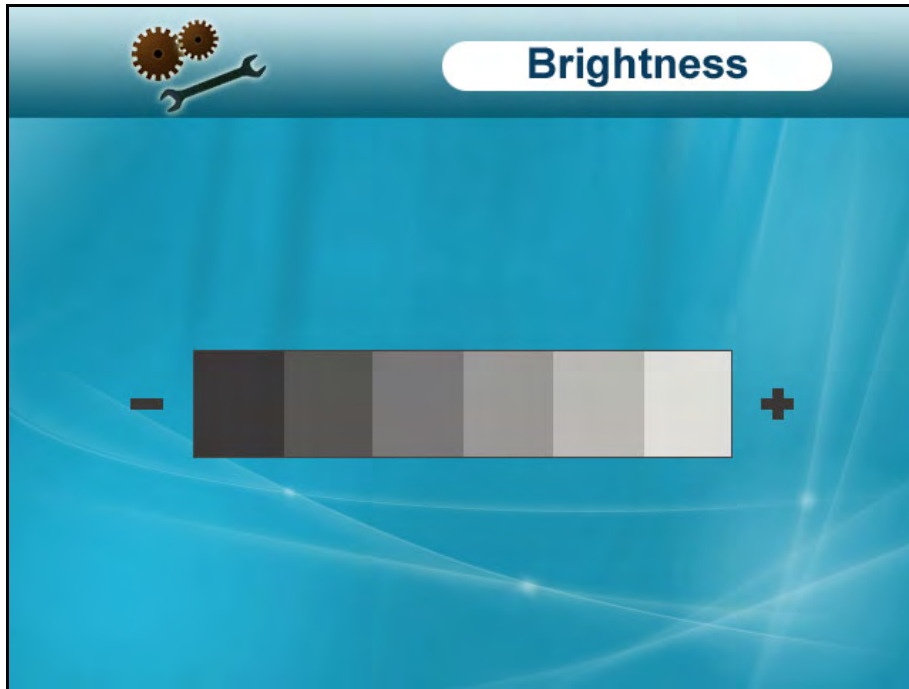


Figure 12.4 Brightness menu

To adjust brightness:

1. From the Main Menu, select **Setting** and press the **Enter/OK button**.
2. From the Settings menu, select **Brightness** and press the **Enter/OK button**.
3. Press **LEFT/RIGHT** to increase and decrease the brightness.
4. Press the **Enter/OK button** to save your settings.
5. Press the **MENU** button until all menu windows are closed.

Format

Use the Format menu to format the SD card. It is highly recommended to format the SD card prior to initial recording.

ATTENTION: Formatting erases all video data on the SD card. This step *cannot* be undone.

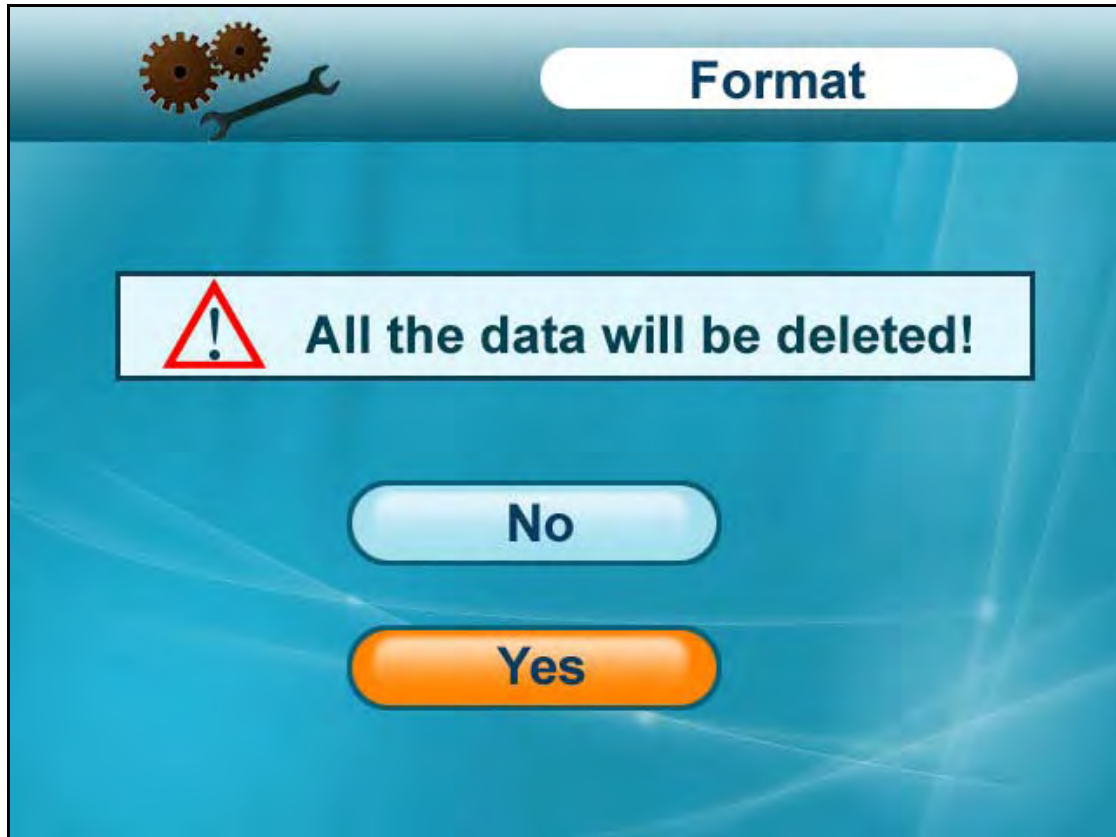


Figure 12.5 Format menu

To format the SD card:

1. Insert the SD card into the SD card slot on the right panel of the wireless receiver until you hear a “click.” Please insert the card according to the diagram on the receiver.
2. From the Main Menu, select **Setting** and press the **Enter/OK button**.
3. From the Settings menu, select **Format** and press the **Enter/OK button**.
4. Select **Yes** and press the **Enter/OK button**. Please allow a few moments for formatting to finish. Formatting time will vary depending on the size of the SD card.

Default

Use the Default menu to restore the system to factory settings.

ATTENTION: Restoring the system to the default factory settings DOES NOT delete video files on the SD card, nor does it reset the date and time on the system.

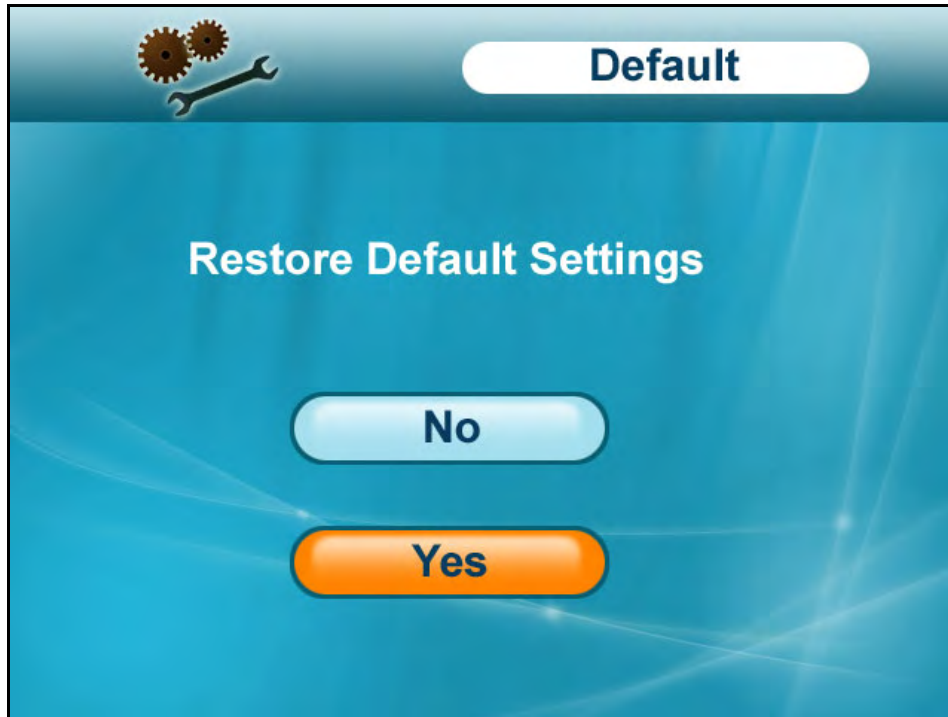


Figure 12.6 Default menu

To restore factory settings:

1. From the Main Menu, select **Setting** and press the **Enter/OK button**.
2. From the Settings menu, select **Default** and press the **Enter/OK button**.
3. Select **Yes** and press the **Enter/OK button**.
4. Press the **MENU button** until all menu windows are closed.

Appendix A: System Specifications

General

Description	Specification
Transmission Frequency	ISM 2,400~2,483.5 MHz
Transmission Power	14dBm
Unobstructed Effective Range	100 m (line of sight)
Spread Spectrum	FHSS
Modulation Mode	GFSK
Operating Temperature	14 ~ 122° Fahrenheit / -10 ~ +50° Celsius
Operating Humidity	<85%

Camera

Description	Specification
Image Sensor	CMOS
Total Picture Pixels	640 x 480 pxl (NTSC)
Minimum Illumination	0 Lux (IR on)
Night Vision Distance	40 ft. / 12 m
View Angle	Diagonal 55°
Power Consumption (Max.)	Max 350 mA
Power Supply	9V DC
Dimensions	70 mm x 188 mm x 195 mm / 2.8" x 7.4" x 7.7" (with antenna)
Weight	0.9 lbs / 0.41 kg

Receiver

Description	Specification
Supported Resolution	640 x 480 @ 10fps or 320 x 240 @ 25fps
Receiving Sensitivity	-81dBm
Power Consumption (Max.)	280 mA
Power Supply	9V DC
Dimensions (W x D x H)	135 mm x 80 mm x 87 mm / 5.3" x 3.2" x 3.5" (with antenna attached)
Weight (with wireless antenna)	0.40 lbs. / 0.18 kg

Appendix B: About Digital Wireless Technology

The Digital Wireless signal transmission type used by the Lorex LW2301 series is also known as **FHSS –Frequency Hopping Spread Spectrum**. This type of signal is highly resistant to deliberate jamming as it generates a channel hopping sequence using an algorithm generated by the receiver system.

The 2.4GHz (2.400-2.480Ghz) band is being divided into sections or paths of 2MHz per section, and each second the transmission signal hops hundreds of times in a specified sequence within this frequency range. The overall bandwidth required for frequency hopping is much wider than 2MHz however because transmission occurs only on a small section of this bandwidth at any given time, the signal being transmitted does not suffer from greatly reduced signal degradation and also avoids blocked paths other devices who act as sources of competing signals. The strength of the signal being transmitted is set to be from 13.5-16dBm, which is much higher than the analog transmission signal allowed by authorities around the Globe.

When an image is captured by the camera it is instantly converted from an analog to digital signal and packaged into small packets. With each successful transmission via the 2 MHz paths discussed above, the packets of information containing images are delivered to the receiver and decoded into analog information. The information can then be displayed on devices that are connected to the wireless receiver (RX).

A device pairing process is required to synchronize the transmitter (TX, Camera) and the receiver (RX). This allows the transmitter and receiver to be on the same frequency and use the same algorithm for frequency hopping. This ensures that only the paired transmitter and receiver can maintain communication signal by hopping to the same frequency paths at the exact same time. As a result, the chance that other devices within the same frequency range are on the same frequency, at the same time and in the same order is extremely unlikely. Note that the pairing process is already done at the factory for products that ship within the same packaging. Only when add-on devices are purchased is a pairing process required.

Appendix C: Adding Cameras

The system comes with a camera that has already been paired to the wireless receiver. The Pairing Function assigns each camera to a different channel on the wireless receiver (up to four cameras), and is necessary for configuring additional cameras. By default, the camera included with the system appears on channels 1 on the wireless receiver.

NOTE: It is highly recommended to pair the cameras to the receiver before permanently mounting the cameras.

To pair an additional camera:

1. Connect the new camera to a power outlet. DO NOT permanently mount the camera.
2. Press **MENU** on the wireless receiver or remote control.
3. From the Main Menu, select **Pairing** and press the **Enter/OK** button.
4. Select **Camera 2**, **Camera 3**, or **Camera 4** and press the **Enter/OK** button.

NOTE: By default, the camera included with your system is paired as Camera 1 (channel 1).

5. Following the on-screen prompt, press the **Pair** button on the rear panel of the camera. You have **30 seconds** to press the PAIR button on the camera. Once paired, the camera will be immediately displayed on-screen.

NOTE: If you do press the Pair button on the camera during the 30 second pairing window, repeat steps 2-5 to try the pairing process again.

Once the camera is paired you can permanently mount the camera to a desired location.



Figure 13.2 Press "Pair" on the back of the camera



Figure 13.0 Pairing menu



Figure 13.1 Pairing screen

At the pairing screen, you have 30 seconds to press the PAIR button on the rear panel of the camera.

Appendix D: Strengthening the Range of the Wireless Signal

Is your wireless signal choppy? Do you want to extend the range of wireless transmission? There are several ways to boost your wireless signal as well as options to help you extend the range of the wireless signal.

Clear Line-of-Sight

The digital wireless signal is virtually interference free. However, you should always ensure there is a clear line-of-sight between the camera and the receiver.

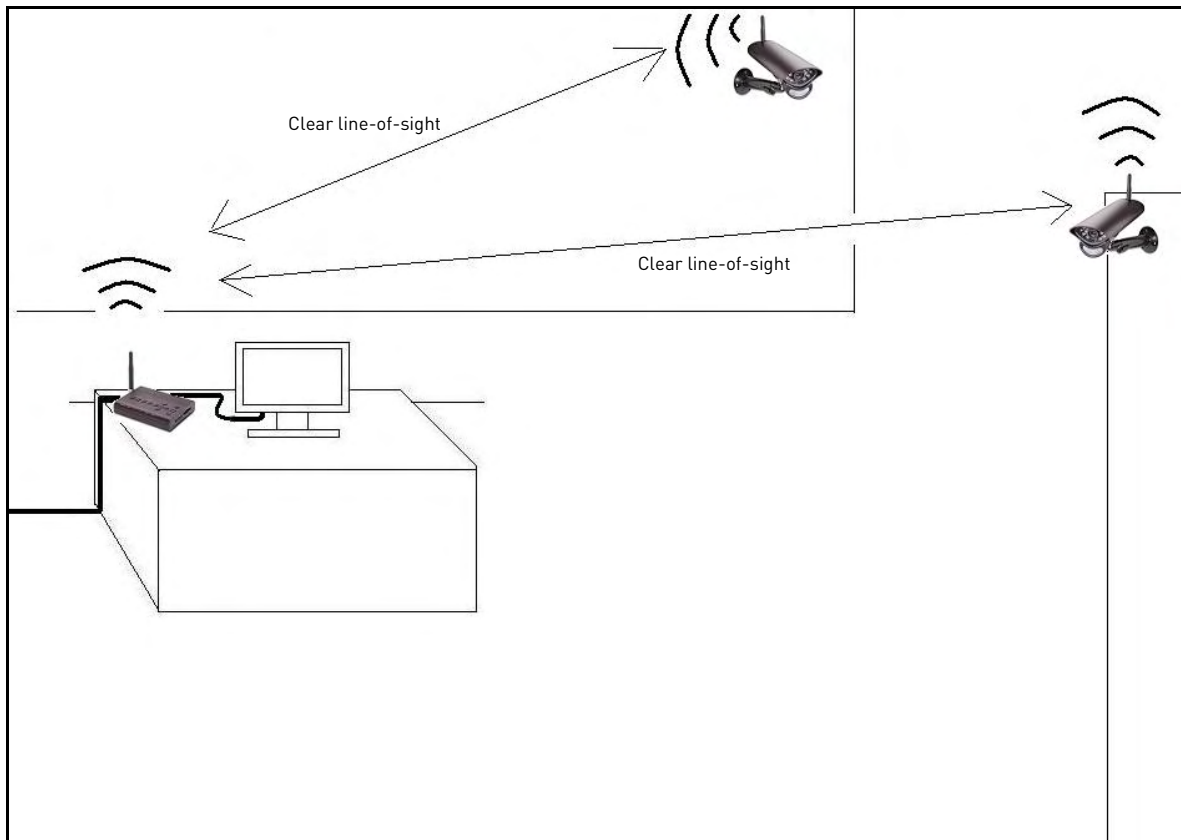


Figure 14.0 Clear line-of-sight between camera(s) and receiver

Obstacles

There should be little to no obstacles obstructing the line-of-sight between the camera and the receiver. Solid objects, such as concrete and metal may limit the range of the wireless signal.

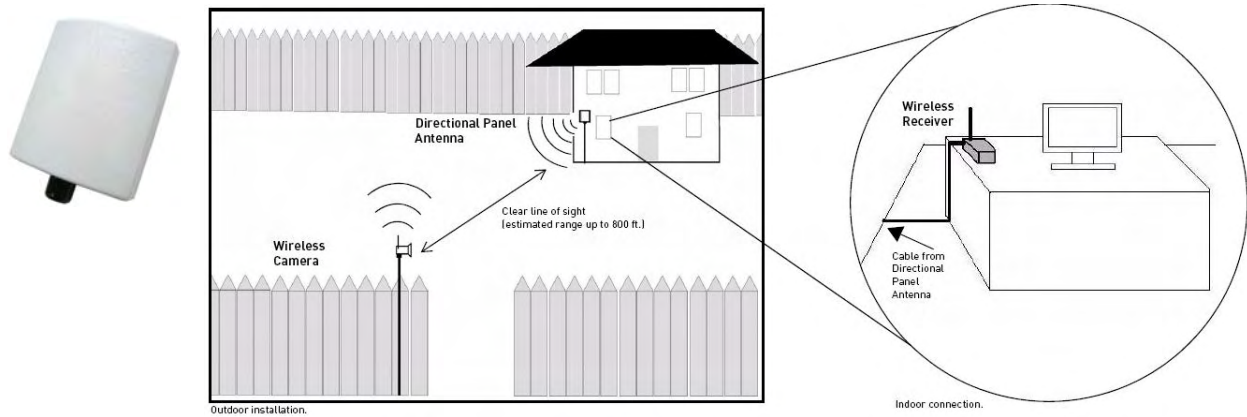
Extending Your Wireless Signal

Even with a clear line-of-sight between your camera(s) and your receiver, you may experience a lower video frame rate simply due to the distance between your wireless devices.

Accessory antennas are available that can help extend the range of your wireless signal.

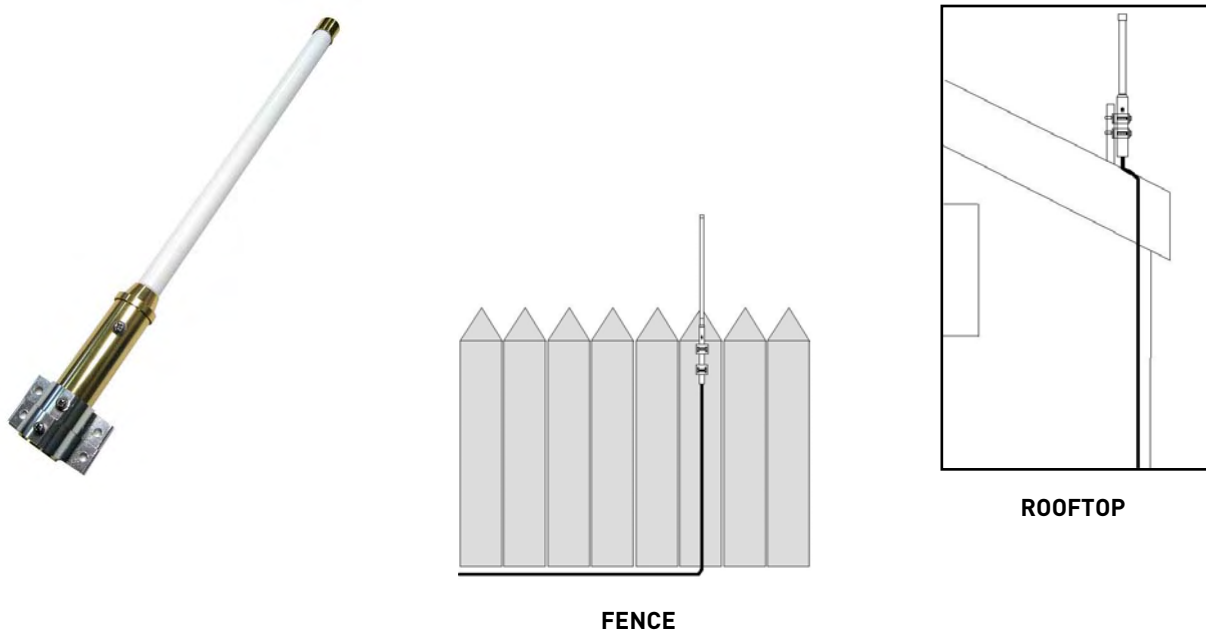
2.4 GHZ Directional Wireless Panel Antenna

Use the 2.4GHz Directional Wireless Panel Antenna (model #: **ACCANTD9**) to focus a wireless signal onto *one specific camera* in order to increase range of transmission (clear line-of-sight between the camera and the antenna is required). A 20 ft. extension cable is included help with proper position of the antenna.



2.4 GHZ Omni-Directional Wireless Antenna

Use the 2.4GHz Omni-Directional Wireless Antenna (model #: **ACCANT09**) to extend the range and boost the signal of several wireless cameras. You should position the Omni-Directional Wireless Antenna in an elevated position to provide a clear line-of-sight to the cameras. A 20 ft. extension cable is included help with proper position of the antenna.



Visit www.lorexctv.com for more details on wireless antennas and accessories.

Appendix E: Deleting Video Files on the System

You can delete video files on the SD card directly on the system. Deleting files if you need to clear space on the SD card (if Overwrite is disabled), or for your own file management purposes. For details, see “Overwrite” on page 37.

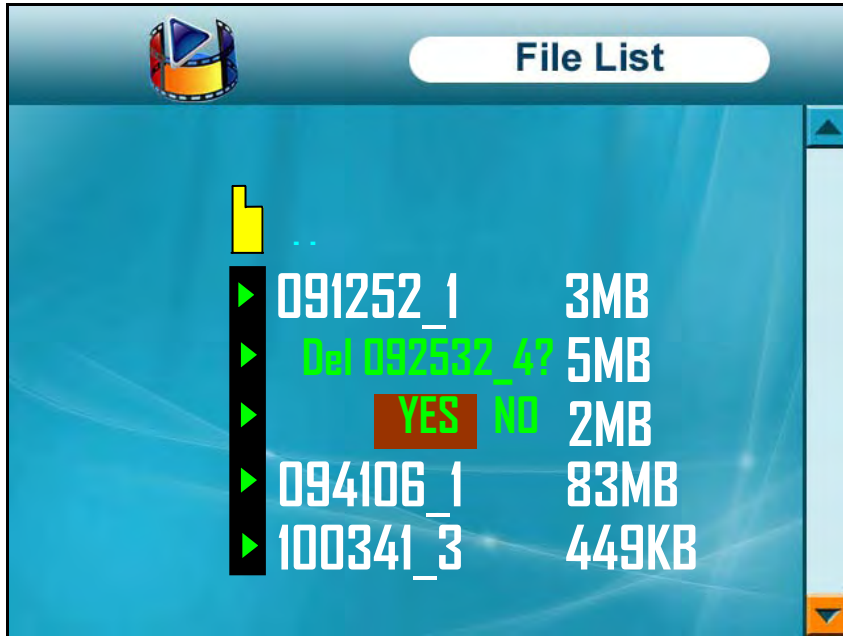


Figure 15.0 Deleting files

To delete files on the SD card:

1. From live viewing, press the **Enter/OK button**. The File menu opens.
2. Select the **VIDEO** folder and press the **Enter/OK button**.
3. Select a Date folder and press the **Enter/OK button**. The file list opens.
4. Select a file and press the **Scan/Del button**.
5. At the prompt, select **YES** and press the **Enter/OK button**. The file is deleted and the File List returns as normal.
6. Repeat steps 3~5 for other files on the SD card.

NOTE: You cannot delete folders on the SD card using the system.

ATTENTION: Use caution if attempting to delete folders on the SD card using your computer. Deleting folders may affect your access to other files on the card or may affect normal operation of the SD card with the system. If you want to delete the contents of the SD card, it is highly recommended to format the card using the system. For details, see “Format” on page 45.

Appendix F: Estimated Recording Times on SD Cards

Use the table below to help you estimate the recording times on various sizes of SD cards. Times shown are in hours, minutes, and seconds.

NOTE: The system is compatible with SD High Capacity (SDHC) cards, minimum Class 2.

SD Card Capacity	Standing Recording Time	
	QVGA 320x240	VGA 640x480
512 MB	1:20:22	0:54:18
1 GB	2:32:05	1:46:24
2 GB	5:02:47	3:47:17
4 GB	10:15:24	7:02:13
8 GB	17:58:28	14:05:01

NOTE: Estimated recording times based on tests using Kingston® brand SD Cards.

Appendix G: Power Failure

A power failure may interrupt recording modes on the system. After power is restored, the following will occur:

- The system will restart in **Auto Sequence Mode + Motion Recording** – this ensures that some form of recording will be immediately active on the system
NOTE: If you had a different display view or recording mode set when the power failure occurred, you will need to re-apply the previous display view and recording mode.
- A flashing **Power Failure icon** will appear on-screen – the Power Failure icon indicates that a power failure occurred while the system was *actively recording* (i.e. “REC” icon was on-screen)



Figure 16.0 Power Failure icon

NOTE: The flashing icon appears *only* if the system was actively recording when the power failure occurred. The flashing icon will disappear when you press buttons on the receiver or remote control.

Troubleshooting

If you have problems with your System, there is often a quick and simple solution. Please try the following:

Problem	Solution
There is no picture from a Camera.	<ul style="list-style-type: none"> • Check power to the Camera. Make sure the power adapter is properly connected • Make sure that the Cameras and Receiver are both ON. • Make sure that the camera is in range of the Receiver.
The picture from the camera is choppy	<ul style="list-style-type: none"> • Make sure that each camera is within range, and that there are no large obstructions or interference • Move the camera closer to the receiver • Try repositioning the camera, receiver or both to improve the reception.
The Picture is or has become Choppy	<ul style="list-style-type: none"> • The picture may become choppy when experiencing a lower frame rate (i.e. 10 frames per second vs. a higher 20 frames per second). • Try moving the camera closer to the receiver. • Remove obstructions between the Receiver and Camera • Try switching to QVGA mode. Resolution will be reduced but video frame rate will increase
The Picture appears to be grainy/distorted	<ul style="list-style-type: none"> • When using with large screen TV/Monitor (especially high-definition televisions), the picture might be grainy as the camera limits video resolution to VGA (640x480 pixels). This is not a product defect. • For best performance use with TV/Monitor PIP (Picture in Picture) function. Check your TV/Monitor product manual to see if this feature is available on your TV/Monitor • View video on a smaller screen TV/Monitor • Consider increasing the range of the wireless signal with an accessory antenna (see page 50)
The Picture is white	<ul style="list-style-type: none"> • Common situation know as "washout" or "whitewash" where a strong light source is pointed at the camera lens. The camera lens IS NOT harmed during a whitewash. • DO NOT point your camera towards a light source
"Err" appears on the on-screen display	<ul style="list-style-type: none"> • The system has encountered an error with the SD card. Power off the receiver, remove then re-insert the SD card, and then power the receiver back on • If "Err" still appears on the OSD, format the SD card
The buttons on the receiver don't work	<ul style="list-style-type: none"> • The Lock may be engaged. On the right panel of the receiver, slide the lock away from the SD card slot • If the lock is disengaged but the buttons still do not function, power the receiver off then power it back on
The 1, 2, 3, & 4 buttons do not change channels	<ul style="list-style-type: none"> • The 1, 2, 3, and 4 buttons jump to their respective channels in Quad Mode ONLY; press the CHANNEL—M button on the remote control or the receiver to change channels manually
The remote control does not work	<ul style="list-style-type: none"> • Replace the battery in the remote control with a fresh CR2025 battery

FAQ

Q: What is the maximum distance I can have between the camera and the receiver?

A: Typically 450 feet (137 m) with a clear line of sight in open space, or approximately 150 feet (46 m) in a house. Walls, studs, furniture will interfere with the range of wireless transmission.

Q: Why does my “wireless camera” have a power cable?

A: The term “wireless” refers to the lack of a video cable between the camera and the receiver. The camera still requires a power source.

What does 'line-of-sight' mean?

A: 'Line-of-sight' means that there are no obstructions which may interfere with the transmission of the audio/video signal. Obstructions include items such as walls, buildings and certain electronic devices.

Q: What is pairing?

A: Pairing is an electronic handshake between digital wireless devices. Pairing allows the devices to communicate exclusively with each other. The transmission is encrypted and secure.

Q: Can digital wireless cameras be paired to more than one receiver?

A: Digital Wireless cameras can only be paired to one receiver. This is to prevent interception by 3rd parties, and prevents any other device from picking up the signal – this also means that you cannot pair one camera to multiple receivers.

Q: Can I use 900 MHz and 2.4 GHz systems at the same time?

A: Yes. 900 MHz devices and 2.4 GHz devices will not interfere with one another.

Q: Can I connect analogue 2.4 GHz wireless cameras to the wireless receiver?

A: No, analogue and digital wireless products are incompatible. Visit www.lorexcctv.com for a full list of cameras and accessories that are compatible with this system.

Q: What does the flashing power-plug icon mean?

A: A power failure occurred while the system was actively recording. When power is restored, the system will restart in *Auto Sequence Mode + Motion Recording* to ensure some form of recording is active on the system. System settings and modes may have been disrupted by the power failure. Please check all system settings and re-apply any options, recording modes, or display views if necessary.

LOREX PRODUCT LIMITED WARRANTY

Lorex warrants, to the original retail purchaser only (the "Purchaser"), that this item (the "Product") if properly used and installed, and where applicable, the CD-ROM on which the accompanying software is provided, is free from manufacturing defects in material and workmanship, provided the Product is used in normal conditions and is installed and used in strict accordance with the instructions contained.

This warranty shall be for the following warranty periods (the "Warranty Period"), commencing on the date the Purchaser buys the Product at retail in an unused condition.

Parts and Labor: 1 year (Warranted parts do not include Bulbs, LED's and Batteries)

Lorex's obligations under this warranty shall be limited to

- The repair and/or replacement of the product by means of hardware and/or software (at option of Lorex);
 - The replacement of any warranted parts found by Lorex to be defective in the Product or, in Lorex's sole discretion, the replacement of the Product found to be defective.
 - If Lorex is unable to repair or replace the Product or CD-ROM, refund the then-current value of the Product.
- Any replacement parts furnished by Lorex in connection with this warranty shall be warranted to the Purchaser for a period equal to the unexpired portion of Warranty Period for the Product.

Warranty Exclusions

This warranty does not apply to Bulbs, LED's and Batteries supplied with or forming part of the product. This warranty is invalidated if other than Lorex accessories are or have been used in or in connection with the Product or in any modification or repair is made to the Product by other than a service depot authorized by Lorex.

This warranty does not apply to defects or damages arising by use of the Product in other than normal (including normal atmospheric, moisture and humidity) conditions or by installation or use of the Product other than in strict accordance with the instructions contained in the Product's Owner's Manual.

This warranty does not apply to defects in or damages to the Product caused by (i) negligent use of the Product, (ii) misuse, abuse, neglect, alteration, repair or improper installation of the Product, (iii) electrical short circuits or transients, (iv) Purchaser usage not in accordance with Product installation, (v) use of replacement parts not supplied by Lorex (vi) improper Product maintenance, or (viii) accident, fire, flood or other Acts of God.

This warranty does not cover the performance or functionality of any computer software included in the package with the Product. This warranty only covers defects in the CD-ROM media such as a broken or a defect in the CD-ROM that would prevent the CD-ROM from being read by your personal computer's CD-ROM drive. Lorex makes no warranty that the software provided with the Product will function without interruption or otherwise be free of anomalies, errors or "Bugs". Lorex makes no warranty with regard to any software provided with the Product unless specifically set forth otherwise in a license agreement accompanying such software. This warranty does not cover any costs relating to removal or replacement of any Product, CD-ROM, or software installed on your computer.

Lorex reserves the right to make changes in design or to make additions to or improvements in its products without incurring any obligation to modify any product which has already been manufactured. Lorex will make every effort to provide updates and fixes to its software via its website. This warranty does not cover any alteration or damage to any other software that may be or may become resident on the user's system as a result of installing the software provided. This warranty is in lieu of other warranties, express or implied, and Lorex neither assumes nor authorizes any person to assume for it any other obligation or liability in connection with the sale or service of the Product. In no event shall Lorex be liable for any special or consequential damages arising from the use of the Product or arising from the malfunctioning or non-functioning of the Product, or for any delay in the performance of this warranty due to any cause beyond its control.

This warranty shall not apply to the appearance or accessory items including, but not limited to cabinets, cabinet parts, knobs etc., and the uncrating, setup, installation or the removal and reinstallation of products after repair.

Lorex does not make any claims or warranties of any kind whatsoever regarding the Product's potential, ability or effectiveness to prevent minimize, or in any way affect personal or property damage or injury. Lorex is not responsible for any personal damage, loss or theft related to the Product or to its use for any harm, whether physical or mental related thereto. Any and all claims or statements, whether written or verbal, by salespeople, retailers, dealers or distributors to the contrary are not authorized by Lorex, and do not affect this provision of this warranty.

Lorex's responsibility under this, or any other warranty, implied or expressed, is limited to repair, replacement or refund, as set forth above. These remedies are the sole and exclusive remedies for any breach of warranty. Lorex is not responsible for direct, special, incidental, or consequential damages resulting from any breach of warranty or under any other legal theory including but not limited to, loss profits, downtime, goodwill, damage to or replacement of equipment and property and any costs of recovering, reprogramming or reproducing any program or data stored in or with a system containing the Product CD-ROM or accompanying software.

Lorex does not warrant that the software will operate with any other software except that which is indicated. Lorex cannot be responsible for characteristics of third party hardware or software which may effect the operation of the software included.

The purchaser may have other rights under state, provincial, or federal laws and where the whole or part of any item of this warranty is prohibited by such laws, it shall be deemed null and void, but the remainder of the warranty shall remain in effect.

All expressed and implied warranties are limited in duration to the limited warranty period. No warranties apply after that period. Some states do not allow limitation on how long an implied warranty lasts, so this limitation may not apply to you. Some states do not allow the exclusion or limitation of incidental or consequential damages, so the above warranty may not apply to you. This limited warranty gives you specific legal rights and you may also have other rights that vary from state to state.

Obtaining Service

In order to obtain service, please make sure that you have registered your product on-line (www.lorexcdv.com) in the warranty registration section. Should the Product require service under this warranty, the Purchaser must provide Lorex with a copy of his/ her original, dated bill of sale, receipt or invoice, failing which Lorex will not perform any of its obligations under this warranty. If you return the Product and/or CD-ROM to Lorex, you must assume the risk of damage or loss during shipment. You must use the original packaging or the equivalent, and you must pay postage.

To claim on this warranty, proceed with the following steps.

- 1 Pack the Product in a well-padded sturdy carton.
 2.
 - 1) If the unit was purchased in the United States proceed as follows:
 - a. Please contact our customer service department to obtain a return authorization number.
 - b. Return the unit to:
 - Lorex Returns
 - c/o Russell Farrow
 - 15 Lawrence Bell Drive, Amherst, NY 14221
 - 2) If the unit was purchased in Canada proceed as follows:
 - a. Please contact our customer service department to obtain a return authorization number.
 - b. Return the unit to:
 - Lorex Service Center,
 - 250 Royal Crest Court, Markham, Ont. L3R 3S1
 - 3) If the unit was purchased in Europe please visit:
 - www.lorexinternational.com for return instructions.

www.lorexinternational.com for return instructions.

TOLL FREE CUSTOMER SUPPORT

North America: 1-888-42-LOREX (1-888-425-6739)

Local: 905-940-5355

International: 800-42-LOREX 0 (800-425-67390)

www.lorexcdv.com

Always use discretion when installing video and/or audio surveillance equipment especially when there is perceived privacy. Inquire regarding federal, state and/or local regulations applicable to the lawful installation of video and/or audio recording or surveillance. Party consent may be required.

GARANTEE LIMITEE DES PRODUITS LOREX

Lorex garantit à l'acheteur original (ci-après désigné comme étant "l'acheteur") dans un magasin au détail (seulement), et que ce produit (ci-après désigné comme étant le "produit"), s'il est installé correctement et - s'il y a lieu - utilisé conformément aux instructions ci-inclues, et le disque CD-ROM qui comporte le logiciel, seront libres de tout défaut de fabrication, tant dans les pièces que la main-d'œuvre, pourvu que le produit soit utilisé dans des conditions normales et installé et utilisé strictement selon les instructions incluses dans le guide qui l'accompagne.

Cette garantie couvrira la période mentionnée ci-dessous (ci-après désignée comme étant la "période de garantie"), commençant le jour où l'acheteur se procure le produit à l'état neuf dans un magasin au détail.

1 année (les pièces couvertes ~~n'incluent pas les ampoules, voyants à DEL ni les piles~~).

Les obligations de Lorex selon les termes de cette garantie se limitent exclusivement aux points suivants :

- Lorex se réserve le droit de réparer ou de remplacer, sa seule discrétion, le logiciel et/ou le matériel.
 - Le remplacement des pièces sous garantie que Lorex estime être défectueuses dans le produit ou le disque CD-ROM ou, à sa seule discrétion, le remplacement du produit jugé défectueux.
 - Si Lorex ne peut réparer ni remplacer le produit ou le disque CD-ROM, rembourser la valeur monétaire du produit ou du disque CD-ROM en cours au moment de l'achat.
- Toutes les pièces remplacées par Lorex seront couvertes pendant la période résiduelle de la garantie dudit produit.

Exclusions de la garantie

Pour obtenir du service, veuillez vous assurer que vous avez inscrit votre produit en ligne (www.lorexcdv.com) dans la section d'abonnement à la garantie. Cette garantie ne couvre pas les ampoules, voyants à DEL, ni les piles incluses avec le produit ou faisant partie de celui-ci. Cette garantie deviendra nulle si des accessoires autres que ceux vendus ou distribués par Lorex sont utilisés ou ont été utilisés conjointement avec le produit ou si des modifications ou des réparations ont été effectuées au produit par une entité autre qu'un centre de service autorisé par Lorex.

Cette garantie ne s'applique pas aux défauts ni aux dommages survenus suite à une utilisation anormale du produit (incluant des conditions atmosphériques et des taux d'humidité anormaux) ou suite à une installation ou une utilisation du produit autre que celle décrite dans le guide accompagnant le produit.

Cette garantie ne s'applique pas aux défauts ni aux dommages causés au produit suite à (i) une utilisation insouciante du produit, (ii) mauvaise utilisation, abus, négligence, modification ou mauvaise installation du produit, (iii) court-circuits ou transferts électriques, (iv) tout usage de l'acheteur qui ne correspond pas à l'installation prescrite du produit, (v) l'utilisation de pièces non fournies par Lorex, (vi) un entretien inadéquat du produit, ou (vii) tout accident, incendie, inondation ou autres désastres naturels.

Cette garantie ne couvre pas la performance ni la fonctionnalité de tout logiciel informatique inclus avec le produit. Cette garantie ne couvre pas les défauts que pourrait contenir le support optique (disque CD-ROM) ou magnétique (disquette), tel qu'un CD-ROM brisé ou comportant un défaut qui l'empêcherait d'être lu adéquatement par le lecteur de disque de votre ordinateur. Lorex ne garantit pas que le logiciel fourni avec le produit fonctionnera sans interruption ni qu'il sera libre de tout défaut, d'erreurs ou de bogues. Lorex ne garantit pas le logiciel inclus à moins que cela ne le soit mentionné spécifiquement dans l'emboîture de la licence incluse avec le produit. Cette garantie ne couvre pas les frais se rapportant à l'enlèvement ni à la réinsertion de tout produit, logiciel, périphérique ou disque CD-ROM installé sur votre ordinateur.

Lorex se réserve le droit de modifier la conception ou d'apporter des ajouts ou des améliorations à ses produits, sans obligation de sa part de modifier les produits déjà fabriqués. Lorex fera tout en son pouvoir pour fournir des améliorations et des réparations à son logiciel via son site web. Cette garantie ne couvre pas les altérations ni les dommages effectués tout autre logiciel, ni les bogues pouvant résider de la façon permanente sur le système de l'utilisateur suite l'installation du logiciel ci-inclus.



Cette garantie a présance sur toutes les autres garanties tacites ou explicites, incluant la garantie en qualité loyale et marchande et les aptitudes visant toute autre obligation ou responsabilité de la part de Lorex, et par les présentes, Lorex n'autorise aucune personne ni entité à assumer pour elle nulle autre responsabilité en rapport avec la vente de ce produit. Lorex ne sera pas tenue responsable, en aucune circonstance, des dommages-intérêts directs ou indirects survenant de l'utilisation du produit ou suite à un mauvais fonctionnement ou à l'absence de fonctionnement adéquat produit, ainsi que pour tout délai dans l'exécution de cette garantie suite à des circonstances hors du contrôle de Lorex.

Lorex ne garantit d'aucune manière l'apparence extérieure du produit, ni les pièces ou accessoires incluant, mais ne s'y limitant pas, le boîtier, les pièces du boîtier, les boutons, etc., ainsi que le déballage, l'installation, l'enlèvement et la réinstallation du produit après une réparation.

Lorex ne garantit pas et ne fait aucune revendication de ce qui a trait au potentiel, à la capacité ou l'efficacité de prévenir, réduire ou d'une façon quelconque, d'influer sur les dommages à la propriété privée ou sur les blessures corporelles. Lorex ne sera pas tenue responsable des blessures corporelles, dommages à la propriété personnelle, perte ni au vol se rapportant de près ou de loin au produit ou son usage dans un cadre malveillant, qu'il soit physique ou mental. Lorex n'autorise aucunement les représentants, détaillants ou grossistes, à faire des revendications ou des annonces de la part de Lorex, tant par voie écrite que verbale et ces annonces n'influent d'aucune manière sur les clauses de cette garantie.

La seule responsabilité de Lorex, selon les termes de cette garantie, qu'ils soient tacites ou explicites, se limite à une réparation, un remplacement ou un remboursement, selon les clauses décrites dans les présentes. Ces recours constitueront les seuls auxquels a droit l'acheteur pour les bris des clauses de la garantie. Lorex ne sera pas responsable des dommages-intérêts spéciaux, directs ou indirects, qui résulteraient d'un bris des clauses de cette garantie ou de toute autre convention législative, incluant mais ne s'y limitant pas, les pertes de profits, pertes de courant immobilisant des équipements, la valeur ajoutée des biens corporels, les dommages effectués au produit et à la propriété ou les coûts reliés à leur remplacement, ainsi que les frais de recouvrement, reprogrammation ou reproduction d'un programme ou des données stockées dans un système contenant le disque CD-ROM du produit ou le logiciel qui accompagne celui-ci.

L'acheteur peut bénéficier de certains droits provinciaux ou fédéraux; additionnels et toute clause de cette garantie qui soit prohibée par de tels lois sera jugée nulle et sans effet mais les autres clauses demeureront en vigueur.

Lorex ne garantit pas que ce logiciel fonctionnera conjointement avec tout autre logiciel ou suite logicielle, moins que cela ne soit indiqué. Lorex ne sera pas tenue responsable des caractéristiques ni des fonctions du matériel ou des logiciels d'un tiers pouvant entrer en conflit avec le fonctionnement du logiciel ci-inclus.

Toutes les garanties tacites ou explicites se limitent à la durée de la garantie limitée. Aucune garantie ne sera applicable après cette période de temps. Certains états ou provinces ne permettent pas de restrictions en ce qui a trait aux termes d'une garantie tacite, ni d'exclusions aux dommages-intérêts directs ou indirects et il se peut que ces restrictions ne s'appliquent pas à vous. Cette garantie donne à l'acheteur original des droits spécifiques et il se peut que d'autres droits, variant d'un état ou d'une province à l'autre, puissent lui être conférés.

Obtention du service

Si l'acheteur a besoin de service pour son produit, selon les termes de cette garantie limitée, il doit fournir à Lorex une copie de la facture d'achat affichant clairement la date et l'endroit où le produit a été acheté. Sans cette preuve d'achat, Lorex ne sera pas dans l'obligation de remplir ses obligations envers l'acheteur. Si vous retournez le produit et/ou le disque CD-ROM à Lorex, vous devez assumer le risque que ceux-ci soient endommagés ou perdus au cours de l'expédition. Vous devez emballer le produit dans sa boîte originale ou un emballage adéquat et vous devez défrayer les coûts d'expédition à l'une des adresses mentionnées ci-dessous.

Pour bénéficier du service sous garantie, vous devez suivre les étapes ci-dessous :

1. Emballez le produit dans une boîte solide et remplie de matériau d'expédition.
2. i) Si l'appareil a été acheté aux États-Unis, suivez ces étapes-ci :
 - a. Veuillez contacter notre département de service à la clientèle pour obtenir un numéro d'autorisation pour le retour.
 - b. Retournez le produit à :
Lorex Returns
c/o Russell Farrow
15 Lawrence Bell Drive, Amherst, NY 14221
- ii) Si l'appareil a été acheté au Canada, suivez ces étapes-ci :
 - a. Veuillez contacter notre département de service à la clientèle pour obtenir un numéro d'autorisation pour le retour.
 - b. Retournez le produit à :
Lorex Customer Service
250 Royal Crest Court, Markham, ON L3R 3S1
- iii) Si l'unité a été achetée dans Europe veuillez visiter : www.lorexinternational.com pour les instructions de retour

COMPOSEZ LA LIGNE D'ASSISTANCE SANS FRAS AUS CONOMMATEURS:

L'Amérique du nord: 1-888-42-LOREX (1-888-425-6739)

Local : 905-940-5355

International : 800-42-LOREX 0 (800-425-67390)

Soyez toujours très discret lorsque vous installez des systèmes de surveillance, surtout dans les endroits plus intimes. Informez-vous au sujet des lois et règlements municipaux, provinciaux ou fédéraux qui s'appliquent à l'installation d'appareils de surveillance audio et vidéo. Il se peut que le consentement de la partie surveillée soit exigé.

GARANTIE LIMITADA DEL PRODUCTO LOREX

Lorex garantiza, sólo al comprador original al por menor (el "Comprador") que este artículo (el "Producto"), si se usa e instala debidamente, y – si hay lugar – el CD-ROM en el que se proporciona el software asociado, está libre de defectos de fabricación en materiales y mano de obra, sujeto a que el Producto sea usado en condiciones normales y que sea instalado y usado estrictamente de acuerdo con las instrucciones contenidas.

Esta garantía será para los siguientes períodos de garantía (el "Período de Garantía"), a partir de la fecha en que el Comprador adquiere el Producto al por menor en la condición de no haber sido usado previamente.

Repuestos y Mano de Obra: 1 año (Las piezas garantizadas no incluyen bombillas, LEDs y baterías)

Las obligaciones de Lorex bajo esta garantía estarán limitadas a:

- la reparación o el reemplazo del producto por medio de hardware y/o software (a opción de Lorex).
- el reemplazo de cualquier parte garantizada que Lorex determine que está defectuosa en el Producto o CD-ROM o, por decisión única de Lorex, al reemplazo del Producto que Lorex encuentre defectuoso.
- Si a Lorex no le es posible reparar o reemplazar el Producto o el CD-ROM, se devolverá el valor vigente en ese momento del Producto o CD-ROM.

Se garantizará al Comprador cualquier pieza de repuesto provista por Lorex en conexión con esta garantía por un período igual a la parte no vencida del Período de Garantía del Producto.

Exclusiones de la garantía

Esta garantía no se aplica a las bombillas, LEDs y baterías suministradas con el producto o que formen parte del mismo.

Esta garantía quedará nula si se han usado accesorios que no son Lorex en el Producto o en relación con el mismo o si se hace alguna modificación o reparación al Producto en algún taller que no sea un local de servicio autorizado por Lorex.

Esta garantía no se aplica a defectos o daños resultantes del uso del producto en condiciones diferentes a las normales (incluyendo condiciones atmosféricas o de humedad normales) o por la instalación o uso del Producto en forma distinta a seguir estrictamente las instrucciones contenidas en el Manual del Propietario del Producto.

Exclusiones de la garantía

Esta garantía no se aplica a las bombillas, LEDs y baterías suministradas con el producto o que formen parte del mismo.

Esta garantía quedará nula si se han usado accesorios que no son Lorex en el Producto o en relación con el mismo o si se hace alguna modificación o reparación al Producto en algún taller que no sea un local de servicio autorizado por Lorex.

Esta garantía no se aplica a defectos o daños resultantes del uso del producto en condiciones diferentes a las normales (incluyendo condiciones atmosféricas o de humedad normales) o por la instalación o uso del Producto en forma distinta a seguir estrictamente las instrucciones contenidas en el Manual del Propietario del Producto.

Esta garantía no se aplica a defectos o daños al Producto causados por (i) uso negligente del Producto, (ii) mal uso, abuso, negligencia, alteración, reparación o instalación incorrecta del Producto, (iii) cortocircuitos o corrientes eléctricas transitorias, (iv) uso por el Comprador que no está de acuerdo con la instalación del producto, (v) uso de piezas de repuesto no suplidas por Lorex (vi) inadecuado mantenimiento del Producto, o (vii) accidente, incendio, inundación u otros accidentes naturales.

Esta garantía no cubre el rendimiento o funcionalidad de ningún software de computadora incluido en el paquete con el Producto. Esta garantía sólo cubre defectos en el material de CD-ROM, tal como roturas o defectos en el CD-ROM que impida que sea leído por la unidad de CD-ROM de su computadora personal. Lorex no garantiza que el software provisto con el Producto funcione sin interrupción o que de otra forma esté libre de anomalías, errores o "bugs". Lorex no ofrece ninguna garantía con respecto a algún software provisto con el equipo a menos que específicamente se establezca de otra forma en un acuerdo de licencia que acompañe a dicho software.

Esta garantía no cubre ningún costo relativo a la remoción o reemplazo de algún Producto, CD-ROM, o software instalado en su computadora.

Lorex se reserva el derecho de hacer cambios en el diseño o hacer adiciones o mejoras a sus productos sin incurrir en ninguna obligación de modificar algún producto que ya haya sido fabricado.

Lorex tratará en lo posible de proporcionar actualizaciones y arreglos a su software por medio de su página en la red.

Esta garantía no cubre ninguna alteración ni daño a algún otro software que pueda ser instalado o pueda quedar instalado en el sistema del usuario como resultado de la instalación del software provisto.

Esta garantía es el reemplazo de otras garantías, expresas o implícitas, y Lorex no asume ni autoriza a ninguna persona a asumir por ella ninguna obligación en relación con la venta o servicio del producto. En ningún caso Lorex será responsable por ningún daño o perjuicio especial o consecuencia resultante del uso del Producto o de su mal funcionamiento o incapacidad de funcionar, o por cualquier demora en la atención de esta garantía debida a causas fuera de su control.

Esta garantía no se aplicará a la apariencia o artículos accesorios incluyendo, sin estar limitado a ellos, gabinetes, piezas de gabinetes, perillas, etc., y el desembalaje, instalación, configuración, o remoción y reinstalación del producto después de ser reparado.

Lorex no hace ninguna de cada declaración ni garantía de ninguna clase con respecto al potencial, capacidad o eficacia del Producto para evitar, minimizar o en alguna forma atectar a los daños o lesiones personales o a la propiedad. Lorex no es responsable por ningún daño personal, siniestro o robo relacionado con el Producto o a su uso para cualquier daño, sea físico o mental relacionado con el mismo. Cualquier afirmación o declaración, sea escrita o verbal, hecha por vendedores, minoristas o distribuidores en sentido contrario no es autorizada por Lorex y no afecta esta disposición de esta garantía.

La responsabilidad de Lorex según esta o cualquier otra garantía, implícita o explícita, está limitada a la reparación, reemplazo o reembolso, como se establece anteriormente. Estas compensaciones son el único y exclusivo remedio por cualquier incumplimiento de garantía. Lorex no es responsable por daños y perjuicios directos, especiales, incidentes o consecuentes resultantes de algún incumplimiento de garantía o bajo cualquier otra teoría legal, incluyendo pero sin estar limitada a: pérdida de utilidades, paralización, plusvalía, daños o reemplazo de equipos y propiedad y cualquier costo de recuperar, reprogramar o reproducir cualquier programa o datos almacenados o usados con un sistema que contenga el CD-ROM del Producto o el software que lo acompaña.

Lorex no garantiza que el software operará con ningún otro software excepto con el que se indica. Lorex no puede ser responsable de las características de hardware o software de terceras personas que puedan afectar la operación del software incluido.

El comprador puede tener otros derechos de acuerdo con las leyes federales, provinciales o estatales y cuando toda esta garantía o parte de la misma sea prohibida por dichas leyes, será considerada nula, pero el resto de la garantía permanecerá vigente.

Todas las garantías expresadas e implícitas están limitadas en duración al período de garantía limitada. Ninguna garantía se aplicará después de dicho período. Algunos estados no permiten limitación a la duración de una garantía implícita, de modo que esta limitación puede no ser de aplicación. Algunos estados no permiten la exclusión o limitación de daños y perjuicios incidentes o consecuentes, por lo que la garantía anterior puede no ser de aplicación. Esta garantía limitada le otorga derechos legales específicos y usted puede también tener otros derechos que varía de un estado a otro.

Cómo obtener servicio

Con el fin de obtener servicio, por favor asegúrese de registrar haber registrado su producto en nuestra página web www.lorexctv.com en la sección de registro de garantía. Si el Producto necesitase servicio bajo esta garantía, el Comprador debe hacer llegar a Lorex una copia del recibo o factura de compra, con su fecha respectiva, sin lo cual Lorex no estará obligada a cumplir con ninguna de sus obligaciones bajo esta garantía. Si devuelve el Producto y/o el CD-ROM a Lorex, debe usted asumir el riesgo de daño o pérdida durante el envío. Debe usar el envase original o equivalente y debe pagar el flete.

Para hacer un reclamo bajo esta garantía, proceda con los siguientes pasos.

1. Empaque el Producto en una caja robusta bien acolchada.
 - i). Si la unidad fue comprada en Estados Unidos proceda en la siguiente forma:
 - a. Para devoluciones por favor contacte nuestro departamento de servicio para obtener un número de autorización
 - b. Devuelva la unidad a:
Lorex Returns
c/o Russell Farrow
15 Lawrence Bell Drive, Amherst, NY 14221
 - ii). Si la unidad fue comprada en Canadá proceda en la siguiente forma:
 - a. Para devoluciones por favor contacte nuestro departamento de servicio para obtener un número de autorización.
 - b. Devuelva la unidad a:
Lorex Customer Service,
250 Royal Crest Court, Markham, Ont. L3R 3S1
 - iii) Si la unidad fue adquirida en Europa y desea devolver el producto por favor visite:
www.lorexinternational.com para obtener instrucciones.

NUMERO GRATUITO DE SERVICIO A CLIENTES:

Norteamérica: 1-888-42-LOREX (1-888-425-6739)

Internacional: 800-42-LOREX 0 (800-425-67390)

Local : 905-940-5355

www.lorexctv.com

Use siempre discreción cuando instale equipo de vigilancia por video y/o audio especialmente cuando se percibe privacidad. Consulte acerca de las regulaciones federales, estatales y/o locales aplicables a la instalación legal de equipos de grabación o vigilancia por video y/o audio. Puede requerirse el consentimiento de las partes.

SEE > HEAR > PROTECT



Enhance your security with genuine Lorex Cameras, Digital Video Recorders, Integrated Systems and Accessories. Order whatever you need at www.lorexcctv.com or call 1-888-42-LOREX (1-888-425-6739)

Warehouse



CVC6998HR

Office



CVC6993R

Restaurant



VQ1536HR

Convenience Store



CNC1020

Day Care



LW2602

PROTECT EVERYTHING THAT MATTERS

Add wired or wireless cameras to expand the "Envelope of Protection" for your business, your home and your family

Home Office



LW2002B

Drive Way



SG7555

Front Door



LW1010

Nursery



LW2002W

Backyard



LW2201



Free Manuals Download Website

<http://myh66.com>

<http://usermanuals.us>

<http://www.somanuals.com>

<http://www.4manuals.cc>

<http://www.manual-lib.com>

<http://www.404manual.com>

<http://www.luxmanual.com>

<http://aubethermostatmanual.com>

Golf course search by state

<http://golfingnear.com>

Email search by domain

<http://emailbydomain.com>

Auto manuals search

<http://auto.somanuals.com>

TV manuals search

<http://tv.somanuals.com>