

## 256 AVAILABLE CODES ON EACH SWITCH

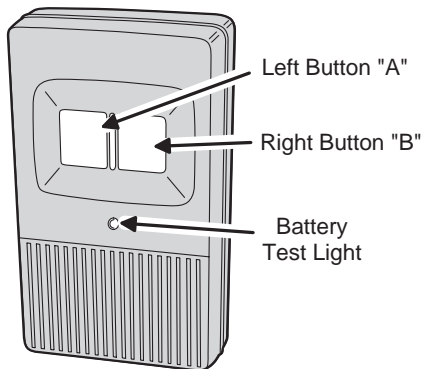
You can select any one of 256 codes on Switch "A" and also any one of 256 codes on switch "B"

### NOTE:

*The manufacturer strongly recommends that you test your equipment frequently. From the time of installation, it is absolutely necessary to test the system at least once a week. It is also good practice to change the 9-volt battery every six months.*

### NOTE:

*The transmitter transmits continuously with button depression. An LED lights during transmission to indicate battery operation.*



## LIMITED WARRANTY

This product is warranted to the consumer against defects in material and workmanship for one year from the date of purchase. This warranty applies to first retail buyers of new devices. Warrantor will repair, or at its option, replace, any device it finds that requires service under this warranty, and will return the repaired or replaced device to the consumer at the warrantor's cost. For warranty service and shipping instructions contact warrantor at the address shown below. Devices must be sent to warrantor for service at owner's expense. The remedies provided by this warranty are exclusive. Implied warranties under state law are to the one year period of this written warranty. Some states do not allow limitations on how long an implied warranty lasts, so the above limitation may not apply to you. In order to be protected by this warranty, save your proof of purchase and send copy with equipment should repair be required. This warranty gives you specific legal rights, and you may also have other rights which vary from state to state.

All products returned for warranty service require a Return Product Authorization Number (RPM). Contact Linear Technical Services at 1-800-421-1587 for an RPA# and other important details.

## IMPORTANT !!!

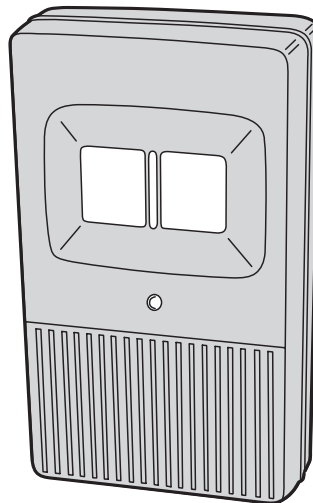
Linear radio controls provide a reliable communications link and fill an important need in portable wireless signaling. However, there are some limitations which must be observed.

- \* For U.S. installations only: The radios are required to comply with FCC Rules and Regulations as Part 15 devices. As such, they have limited transmitter power and therefore limited range.
- \* A receiver cannot respond to more than one transmitted signal at a time and may be blocked by radio signals that occur on or near their operating frequencies, regardless of code settings.
- \* Changes or modifications to the device may void FCC compliance.
- \* Infrequently used radio links should be tested regularly to protect against undetected interference or fault.
- \* A general knowledge of radio and its vagaries should be gained prior to acting as a wholesale distributor or dealer, and these facts should be communicated to the ultimate users.

## Delta-3 Series **DT-2A** Two-button Digital Transmitter



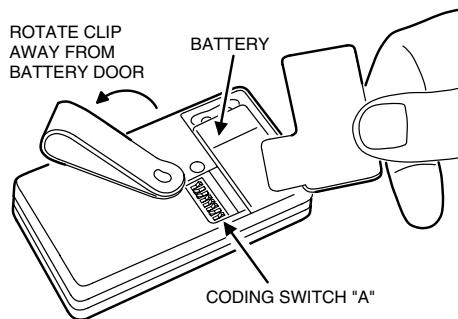
## Code Setting Instructions



# Linear®

## DT-2A TWO-BUTTON TRANSMITTER CODE SETTING

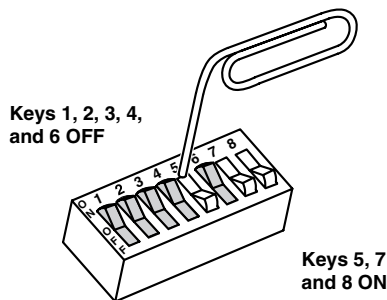
There are two digital coding switches in the DT-2A transmitter. Code Switch "A" is exposed by removing the battery access cover. It is the coding switch for the **left button** on the front of the transmitter (Button "A"). Code Switch "B" is the coding switch for the **right button** on the front of the transmitter (Button "B"). The switch is located behind the back cover of the transmitter. To access Coding Switch "B", it is necessary to remove the screw located in the middle of the back cover.



## SETTING CODE SWITCH "A"

Before removing the battery access door, loosen battery clip screw and rotate clip away from door. To open the battery access cover and gain access to Coding Switch "A", lift off the small L-shaped cover by inserting your thumbnail or a small screwdriver under either of the two slots at the edge of the case. The coding switch has eight keys numbered 1-8.

To set a code, select any combination of ON or OFF positions for the switch keys numbered 1-8. Use a paper clip or other pointed object (except a pencil or pen) to set the keys on the coding switch. The ON position is when the top of the switch is down.



## SETTING CODE SWITCH "B"

To gain access to Coding Switch "B", first remove the screw in the middle of the back cover. Remove the back cover to expose the 8-key switch.

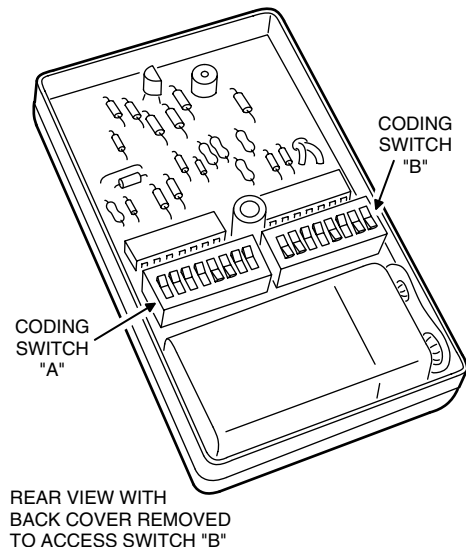
To set a code, select any combination of ON and OFF positions for the switch keys, in the same manner as described for Coding Switch "A".

### CAUTION:

*It is not advisable to set a code with all keys ON, OFF, or alternating ON and OFF, because these codes are too easy to duplicate.*

## TRANSMITTERS CODE MUST MATCH RECEIVER CODE

Switch "A" is designed for use with a garage door opener. The code set to Switch "A" must be identical to the code set in the receiver to be used in conjunction with Push-button "A"



Switch "B", under the back cover is designed for use with less-frequently changed codes, such as a community gate operated by Push-button "B". The code set into Switch "B" must be identical to the code set in the receiver to be used in conjunction with Push-button "B".

## Free Manuals Download Website

<http://myh66.com>

<http://usermanuals.us>

<http://www.somanuals.com>

<http://www.4manuals.cc>

<http://www.manual-lib.com>

<http://www.404manual.com>

<http://www.luxmanual.com>

<http://aubethermostatmanual.com>

Golf course search by state

<http://golfingnear.com>

Email search by domain

<http://emailbydomain.com>

Auto manuals search

<http://auto.somanuals.com>

TV manuals search

<http://tv.somanuals.com>