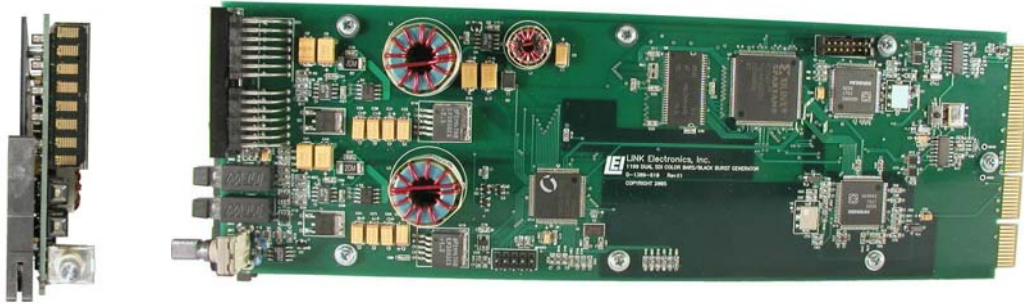


## **SDI SMPTE COLOR BAR GENERATOR WITH GEN-LOCK**



**MODEL 1199**

### **FEATURES**

- ◆ 10 Bit Processing
- ◆ SDI SMPTE Color Bars
- ◆ NTSC or PAL
- ◆ Two Black Burst Output
- ◆ Two SMPTE Color Bar Output
- ◆ RS-170A Spec
- ◆ Gen-lock
- ◆ H. Timing
- ◆ V. Timing
- ◆ Rotary Encoder
- ◆ RS-189A
- ◆ 7-Segment LED Readout
- ◆ Use As Stand-alone

The LINK 1199 is another family of modules for the DigiFlex 1000 series. The unit automatically selects between NTSC or PAL in the Gen-lock mode. The 1199 defaults to NTSC in the free run mode. For PAL operation, an external PAL black burst signal must be attached to the EXT REF input on the rear I/O. The 1199 takes advantage of the latest FPGA technology to provide the highest performance for a SMPTE color bar generator. There are two outputs each of SDI SMPTE color bars and the two outputs each of SDI black. The timing range is infinite for each output set i.e. Black and color bars.

There is a front card edge LED for displaying the function under adjustment. Two push-buttons switches are used for "Select" and "Enter". The front card edge LED displays H and V timing numbers for audit and confirmation.

The 1199 SDI SMPTE Color Bar generator specifically designed for use in 601 SDI digital applications in both 525/60 and 625/50 systems. A high stability VCXO provides the necessary accuracy for the most demanding requirements.

An infinite Gen-lock timing range makes the 1199 ideal for timing the signal into the studio facility. The two outputs of the 1199, color bar and black burst outputs are adjustable over the entire H and V infinite timing range. For total flexibility, the 1000 frame will hold up to ten 1199 models, this makes timing of SDI color bar and black an easy task. Each of the 1199's in a frame may select either color bars or black burst. Each module may be used to time source video's in a system, by using the black burst output.

The 1199 is ideal for use as either a master or slave generator in any system, making Link Electronics the only choice for a digital timing system to meet both your needs and your budget.

The 1199 receives a reference black burst for timing purposes in the Gen-lock mode, or as a stand-alone without a reference input in the free-running mode. The unit will operate in the 7200 single module chassis for remote field operation. The 1000 frame holds up to ten modules with dual power supplies of any mix of the 1000 series modules. At present there are 35 module choices for system integration.

# SMPTE COLORBAR GENERATOR

## Model 1199

### SPECIFICATIONS

#### SERIAL DIGITAL OUTPUTS:

Format: ..... 270 Mb/s component per SMPTE 259M-1993  
Video Format: ..... 525/60 Hz & 625/50 Hz  
Stability: .....  $\pm 5$  Hz  
Connectors: ..... BNC  
Impedance: ..... 75 $\Omega$   
Colorbar Output: ..... Two SDI SMPTE Colorbar, 75%  
Blackburst Output: ..... Two Black burst  
Return Loss: .....  $>18$ dB  
DC Offset: ..... 0.5V maximum  
Rise/Fall Time: ..... 400 ps to 1.5 ns  
Jitter: ..... 0.25 ns over a one line period, (non gen-locked)  
Signal Level: ..... 800mV $\pm 1$  %  
CMR: ..... 30Vp-p, up to 60Hz  
Equalization: ..... Automatic up to  $>30$ dB

#### REFERENCE INPUT:

Number of Reference Inputs: ..... 1 NTSC or PAL Black burst  
Impedance: ..... 75 $\Omega$   
Return Loss: .....  $>38$ dB to 5MHz  
Signal Level: ..... 1 .0Vp-p  $\pm 10$ %, Adjustable  
DC Offset: .....  $\pm 100$ mV

#### FRONT CONTROLS & INDICATORS:

Switch, Enter: ..... Green LED  
Switch, Escape: ..... Red LED  
LED Display: ..... Readout of timing adjustments  
Set-up: ..... On/Off

#### ENVIRONMENTAL:

Temperature: ..... 0° to 50°C Ambient  
Humidity: ..... 0% to 90% non-condensing  
Power: ..... 3.5 Watts

#### MECHANICAL:

Height: ..... 3.2 Inch  
Width: ..... 1.0 Inch  
Length: ..... 10 Inch  
Weight: ..... 7.25 Oz

**LINK ELECTRONICS, INC.**  
2137 Rust Avenue  
Cape Girardeau, MO 63703-7668  
Phone: 573 334 4433  
FAX: 573 334 9255

PROFESSIONAL SERIES--  
Modular system products--by **LINK**



## Free Manuals Download Website

<http://myh66.com>

<http://usermanuals.us>

<http://www.somanuals.com>

<http://www.4manuals.cc>

<http://www.manual-lib.com>

<http://www.404manual.com>

<http://www.luxmanual.com>

<http://aubethermostatmanual.com>

Golf course search by state

<http://golfingnear.com>

Email search by domain

<http://emailbydomain.com>

Auto manuals search

<http://auto.somanuals.com>

TV manuals search

<http://tv.somanuals.com>