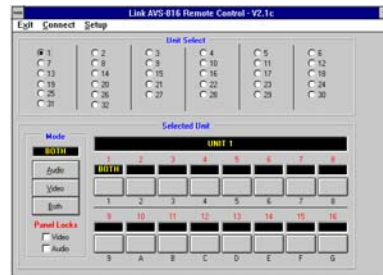


# HD SD SDI SWITCHER WITH ANALOG AUDIO FOLLOW MODEL AVS-816/HDA



## FEATURES

- ◆ RS-232/RS-422
- ◆ 16 Video Inputs
- ◆ 16 Audio Inputs
- ◆ Vertical Interval
- ◆ HD SD SDI Video
- ◆ Analog Audio
- ◆ Includes 816 OP/B
- ◆ Includes 816 OP/HD



Computer Control Panel

## FEATURES

- ◆ GPI Control
- ◆ Two Video Outputs
- ◆ One Rack Unit Cabinet
- ◆ One Stereo Audio Output
- ◆ Audio & Video Break-away
- ◆ Controls Up to 32 Switchers
- ◆ Individual I/O Audio Connection
- ◆ Windows™ Based Control Software

The AVS-815/HDA is an HD SD SDI video switcher with Analog audio follow. This unit is a wide band-width video/audio vertical interval switcher designed for the video professional in mind. It features compact modular design which allows it to handle HD SD SDI video and analog audio. The unit has sixteen channels of HD SD video and stereo audio. Digital and analog switching modules for both video and audio may be mixed in any combination for complete system flexibility. The inputs are non-looping and offer outstanding return loss performance. For HD SD digital applications, an optional analog monitoring output is available for analog audio.

Audio and video break-away are selected by a single switch on the front panel. Dual LED's on the source selection and follow switch indicate follow or break-away. The AVS-815/HDA allows the user to efficiently and economically route or delegate multiple video and audio signals.

The analog audio inputs use standard 3-pin Weco connectors. The Weco 3-pin connectors are fast disconnect for ease of set-up.

The analog audio I/O features full transformer isolation to eliminate the possibility of ground loop interference. Switching is accomplished during the vertical Interval by using the vertical sync derived from the video at the output stage. In a similar fashion, digital audio switching takes place during the audio sample preamble. Up to 32 switchers can be controlled by the computer software.

The AVS-815/HDA may be controlled by a serial data feed of either RS-232 or RS-422/485 interface standards, selectable by a simple internal DIP switch. A remote control panel is also available which utilizes the common RJ-11 modular connector along with the RS-485 interface standard. For automated system applications, an optional GPI interface is available.

The serial communication protocol is compatible with existing Link video and audio switchers and remote control panels. For integration into existing systems, the AVS-816/HDA can be preset to respond to that instruction set as well.

**LINK ELECTRONICS, INC.**

2137 Rust Ave.  
Cape Girardeau, MO 63703  
Phone: 573 334 4433  
FAX: 573 334 9255

**PROFESSIONAL SERIES--  
stand-alone system products--by LINK**

**AVS-816/HDA, 16 X I VIDEO/AUDIO SWITCHER  
RS-232/RS-422 CONTROLLED**

**SPECIFICATIONS**

**HD SD SDI VIDEO INPUTS:**

Standard: . . . . . 270Mb/s, 1.4835/1.485Gb/s  
 Number: . . . . . Sixteen (16)  
 Impedance: . . . . . 75S, 1%  
 Configuration: . . . Single-Ended, AC Coupled  
 Return Loss: . . . . . >18dB  
 Reference In: . . . . . Analog Black

**Outputs:**

Number: . . . . . One, HD SD SDI  
 Level: . . . . . 800mV ±10%  
 Impedance: . . . . . 75S, ±1%  
 Return Loss: . . . . . >18dB  
 Rise/Fall Time: . . . . . 1ns ± 250ps  
 Overshoot: . . . . . <10% of Amplitude  
 Equalization: . . . . . Automatic up to >30dB  
 Propagation Delay: . . . . . 10ns  
 Input Cable Length, Max . . . . . 250m

**ENVIRONMENTAL:**

Temperature: . . . . . 0° to 50°, ambient  
 Humidity: . . . . . 0% to 90% non-condensing

**POWER:**

Input: . . . . . 120/240 VAC ±10% 50/60 Hz  
 Power: . . . . . 8 VAR

**ANALOG AUDIO INPUTS:**

Number: . . . . . 16  
 Connector: . . . . . 3 Pin Term. Plug-in  
 Format . . . . . Bi-Phase Mark Encoded  
 Impedance: . . . . . 20KS, bridging  
 Coupling: . . . . . Transformer  
 Level: . . . . . 4.2Vpp Typical  
 Sample Freq. Range: . . . . 30 KHz to 50 KHz

**Outputs:**

Number: . . . . . Two  
 Interface: . . . . . AES3-1992  
 Connectors: . . . . . 3 Pin Plug-in Term Block  
 Format: . . . . . Bi-Phase Mark Encoded  
 Impedance: . . . . . 20KS, bridging  
 Coupling: . . . . . Transformer  
 Level: . . . . . 4.2 Vp-p Typical

**MECHANICAL:**

Size:  
 Height: . . . . . 1.75"  
 Width: . . . . . 19"  
 Depth: . . . . . 8.7"  
 Weight: . . . . . 6.8 lbs.



**LINK ELECTRONICS, INC.**

2137 Rust Ave.  
 Cape Girardeau, MO 63703  
 Phone: 573 334 4433  
 FAX: 573 334 9255

**PROFESSIONAL SERIES--**

**stand-alone system products--by LINK**

## Free Manuals Download Website

<http://myh66.com>

<http://usermanuals.us>

<http://www.somanuals.com>

<http://www.4manuals.cc>

<http://www.manual-lib.com>

<http://www.404manual.com>

<http://www.luxmanual.com>

<http://aubethermostatmanual.com>

Golf course search by state

<http://golfingnear.com>

Email search by domain

<http://emailbydomain.com>

Auto manuals search

<http://auto.somanuals.com>

TV manuals search

<http://tv.somanuals.com>