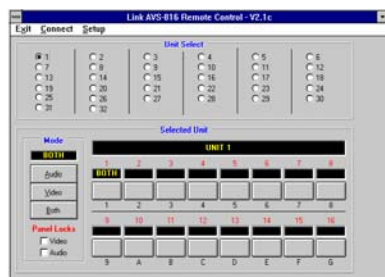


HD SD SDI SWITCHER WITH AES AUDIO FOLLOW MODEL AVS-816/HDD



Computer Control Panel

FEATURES

- ◆ RS-232/RS-422
- ◆ 16 Video Inputs
- ◆ 16 Audio Inputs
- ◆ Vertical Interval
- ◆ HD Video
- ◆ AES Audio
- ◆ Includes 816 OP/HD
- ◆ Includes 816 OP/C + OP/F

The AVS-816/HDD is an HD SD SDI video switcher with AES audio follow. This unit is a wide band-width video/audio vertical interval switcher designed for the video professional in mind. It features compact modular design which allows it to handle video and AES audio. The unit has sixteen channels of video and AES audio. Digital and analog switching modules for both video and audio may be mixed in any combination for complete system flexibility. The inputs are non-looping and offer outstanding return loss performance.

Audio and video break-away are selected by a single switch on the front panel. Dual LED's on the source selection and follow switch indicate follow or break-away. The AVS-816/HDD allows the user to efficiently and economically route or delegate multiple video and audio signals.

The AES audio inputs use standard BNC connectors. The Weco 3-pin connectors may be ordered as an option for balanced audio.

FEATURES

- ◆ GPI Control
- ◆ One Video Output
- ◆ One Rack Unit Cabinet
- ◆ One AES Audio Output
- ◆ Audio & Video Break-away
- ◆ Controls Up to 32 Switchers
- ◆ Individual I/O Audio Connection
- ◆ Windows™ Based Control Software

The digital audio I/O features full transformer isolation to eliminate the possibility of ground loop interference. Switching is accomplished during the vertical Interval by using the vertical sync derived from the video at the output stage. In a similar fashion, digital audio switching takes place during the audio sample preamble. Up to 32 switchers can be controlled by the computer software.

The AVS-816/HDD may be controlled by a serial data feed of either RS-232 or RS-422/485 interface standards, selectable by a simple internal DIP switch. A remote control panel is also available which utilizes the common RJ-11 modular connector along with the RS-485 interface standard. For automated system applications, an optional GPI interface is available.

The serial communication protocol is compatible with existing Link video and audio switchers and remote control panels. For integration into existing systems, the AVS-816/HDD can be preset to respond to that instruction set as well.

LINK ELECTRONICS, INC.

2137 Rust Ave.
Cape Girardeau, MO 63703
Phone: 573 334 4433
FAX: 573 334 9255

**PROFESSIONAL SERIES--
stand-alone system products--by LINK**

AVS-816/HDD, 16 X I VIDEO/AUDIO SWITCHER RS-232/RS-422 CONTROLLED

SPECIFICATIONS

HD SD SDI VIDEO INPUTS:

Standard: 270Mb/s, 1.4835/1.485Gb/s t
Number: Sixteen (16)
Impedance: 75S, 1%
Configuration: . . . Single-Ended, AC Coupled
Return Loss: >18dB
Reference Input Analog Blacl

Outputs:

Number: One, HD SD SDI
Level: 800mV ±10%
Impedance: 75S, ±1%
Return Loss: >18dB
Rise/Fall Time: 1ns ± 250ps
Overshoot: <10% of Amplitude
Equalization: Automatic up to >30dB
Propagation Delay: 10ns
Input Cable Length, Max 250m

ENVIRONMENTAL:

Temperature: 0° to 50°, ambient
Humidity: 0% to 90% non-condensing

POWER:

Input: 120/240 VAC ±10% 50/60 Hz
Power: 8 VAR

AES AUDIO INPUTS:

Number: 16
Interface: AES3-1992
Connector: 3 Pin Term. Plug-in
Format Bi-Phase Mark Encoded
Impedance: 110S ±1%
Coupling: Transformer
Level: 4.2Vpp Typical
Sample Freq. Range: 30 KHz to 50 KHz

Outputs:

Number: One, Digital on BNC
. One, Analog for Monitoring, 3 pin connector
Interface: AES3-1992
Connectors: 3 Pin Plug-in Term Block
Format: Bi-Phase Mark Encoded
Impedance: 110S ±1%
Coupling: Transformer
Level: 4.2 Vp-p Typical

MECHANICAL:

Size:
Height: 1.75"
Width: 19"
Depth: 8.7"
Weight: 6.8 lbs.



LINK ELECTRONICS, INC.

2137 Rust Ave.
Cape Girardeau, MO 63703
Phone: 573 334 4433
FAX: 573 334 9255

PROFESSIONAL SERIES--

stand-alone system products--by **LINK**

Free Manuals Download Website

<http://myh66.com>

<http://usermanuals.us>

<http://www.somanuals.com>

<http://www.4manuals.cc>

<http://www.manual-lib.com>

<http://www.404manual.com>

<http://www.luxmanual.com>

<http://aubethermostatmanual.com>

Golf course search by state

<http://golfingnear.com>

Email search by domain

<http://emailbydomain.com>

Auto manuals search

<http://auto.somanuals.com>

TV manuals search

<http://tv.somanuals.com>