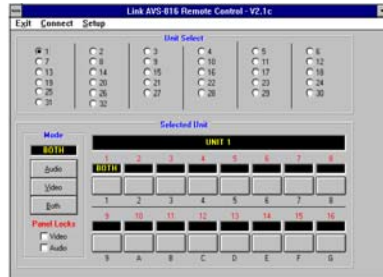


# ANALOG VIDEO SWITCHER MODEL AVS-816/VA



## FEATURES

- ◆ Analog Video only
- ◆ RS-232/RS-422
- ◆ 16 Video Inputs
- ◆ Vertical Interval
- ◆ Includes 816 OP/A

## FEATURES

- ◆ GPI Control
- ◆ Two Video Outputs
- ◆ One Rack Unit Cabinet
- ◆ Controls Up to 32 Switchers
- ◆ Windows™ Based Control Software

Computer Control Panel

The AVS-816/VA is an analog video only switcher. This unit is a wide band-width vertical interval video switcher designed for the video professional in mind. It features compact modular design which allows it to handle video or audio in a one rack unit chassis. The unit has sixteen channels of video and an optional stereo audio module. Digital and analog switching modules for both video and audio may be mixed in any combination for complete system flexibility. The inputs are non-looping and offer outstanding return loss performance.

When equipped with the audio module, break-away is selected by a single switch on the front panel. Dual LED's on the source selection and follow switch indicate follow or break-away. The AVS-816/VA allows the user to efficiently and economically route or delegate multiple video signals.

The optional audio module provides convenient 3-pin Weco connectors for the input signals, which detach individually, allowing the user to pre-wire them before connecting to the switcher.

The switcher design provides features not found in product of equal category. The AVS-816 chassis may be used for any of the plug-in options. Upgrading to SDI or HD/SDI is simply done by ordering the requires module. Interfacing into the chassis is accomplished by flat ribbon cables. The individual module is shipped from the factory completely calibrated and adjusted for optimum performance. Up to 32 switchers can be controlled by the computer software.

The AVS-816/VA may be controlled by a serial data feed of either RS-232 or RS-422/485 interface standards, selectable by a simple internal DIP switch. A remote control panel is also available which utilizes the common RJ-11 modular connector along with the RS-485 interface standard. For automated system applications, an optional GPI interface is available.

The serial communication protocol is compatible with existing Link video and audio switchers and remote control panels. For integration into existing systems, the AVS-816/VA can be preset to respond to that instruction set as well.

**LINK ELECTRONICS, INC.**

2137 Rust Ave.

Cape Girardeau, MO 63703

Phone: 573 334 4433

FAX: 573 334 9255

**PROFESSIONAL SERIES--**

**stand-alone system products--by LINK**

# AVS-816/VA, 16 X I VIDEO SWITCHER RS-232/RS-422 CONTROLLED

## SPECIFICATIONS

### ANALOG VIDEO INPUTS:

Number: ..... Sixteen (16)  
Impedance: .....  $75\Omega \pm 1\%$   
Configuration: ..... Single-ended  
Level: .....  $1\text{vpp} \pm 3\text{dB}$

### Outputs:

Number: ..... Two (2)  
Level: ..... Unity Gain  $\pm 1\%$   
Impedance: .....  $75\Omega \pm 1\%$   
Frequency Response: .....  $\pm 0.5\text{dB}$  to 15MHz  
..... 3dB to 30MHz  
Differential Phase: .....  $< 0.1^\circ$   
Differential Gain: .....  $< 0.1\%$   
Tilt: .....  $< 0.5\%$   
S/N Ratio: .....  $> 70\text{dB}$

Propagation Delay: .....  $161\text{ns} \pm 0.2\text{ns}$   
Crosstalk: .....  $> 60\text{dB}$ , Worst Case

### ENVIRONMENTAL:

Temperature: .....  $0^\circ$  to  $50^\circ$ , ambient  
Humidity: ..... 0% to 90% non-condensing

### AUDIO INPUTS:

### NO AUDIO INCLUDED

### POWER:

Input: ..... 120/240 VAC  $\pm 10\%$  50/60 Hz  
Power: ..... 8 VAR

### MECHANICAL:

Size:  
Height: ..... 1.75"  
Width: ..... 19"  
Depth: ..... 8.7" deep  
Weight: ..... 6.8 lbs.



**LINK ELECTRONICS, INC.**

2137 Rust Ave.  
Cape Girardeau, MO 63703  
Phone: 573 334 4433  
FAX: 573 334 9255

**PROFESSIONAL SERIES--**

**stand-alone system products--by LINK**

## Free Manuals Download Website

<http://myh66.com>

<http://usermanuals.us>

<http://www.somanuals.com>

<http://www.4manuals.cc>

<http://www.manual-lib.com>

<http://www.404manual.com>

<http://www.luxmanual.com>

<http://aubethermostatmanual.com>

Golf course search by state

<http://golfingnear.com>

Email search by domain

<http://emailbydomain.com>

Auto manuals search

<http://auto.somanuals.com>

TV manuals search

<http://tv.somanuals.com>