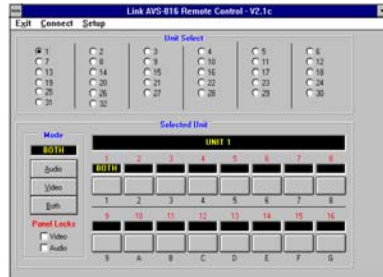


HD SD SDI VIDEO SWITCHER MODEL AVS-816/VHD



Computer Control Panel

FEATURES

- ◆ **HD SD SDI Video**
- ◆ **RS-232/RS-422**
- ◆ **16 Video Inputs**
- ◆ **Vertical Interval**
- ◆ **Includes 816 OP/HD**
- ◆ **One Video Output**

FEATURES

- ◆ **GPI Control**
- ◆ **Break-away Audio**
- ◆ **One Rack Unit Chassis**
- ◆ **Controls Up to 32 Switchers**
- ◆ **Reference In, BB or Tri Level**
- ◆ **Windows™ Based Control Software**

The AVS-816/VHD is an HD SD SDI video only switcher, This unit is a professional HD SD video switcher that handles standard definition as well. It features compact modular design which allows it to handle video and audio in either the analog or digital domain. The unit has sixteen channels of video or audio (with option) format. Digital and analog switching modules for both video and audio may be mixed in any combination for complete system flexibility. The inputs are non-looping and offer outstanding return loss *performance*.

Audio and video break-away are selected by a single switch on the front panel, if equipped with audio follow. Dual LED's on the source selection and follow switch indicate follow or break-away. The AVS-816/VHD allows the user to efficiently and economically route or delegate multiple video and audio signals.

Up to 32 switchers can be controlled by the computer software.

The AVS-816/VHD may be controlled by a serial data feed of either RS-232 or RS-422/485 interface standards, selectable by a simple internal DIP switch. A remote control panel is also available which utilizes the common RJ-11 modular connector along with the RS-485 interface standard. For automated system applications, an optional GPI interface is available.

The serial communication protocol is compatible with existing Link video and audio switchers and remote control panels. For integration into existing systems, the AVS-816/VHD can be preset to respond to that instruction set as well.

LINK ELECTRONICS, INC.

2137 Rust Ave.
Cape Girardeau, MO 63703
Phone: 573 334 4433
FAX: 573 334 9255

**PROFESSIONAL SERIES--
stand-alone system products--by LINK**

**AVS-815/HDD, 16 X I VIDEO/AUDIO SWITCHER
RS-232/RS-422 CONTROLLED
Model AVS-816/VHD**

SPECIFICATIONS

DIGITAL VIDEO INPUTS:

Standard: 270Mb/s, 1.4835/1.485Gb/s
Number: Sixteen (16)
Impedance: 75Ω, 1%
Configuration: . . . Single-Ended, AC Coupled
Return Loss: >18dB

AUDIO INPUTS:

NO AUDIO SUPPLIED

Reference Input:

Number: One
Signal Type: Analog Black or Tri Level

Digital Output:

Number: One, Digital
Level: 800mV ±10%
Impedance: 75Ω, ±1%
Return Loss: >18dB
Rise/Fall Time: 1ns ± 250ps
Overshoot: <10% of Amplitude
Equalization: Automatic up to >30dB
Propagation Delay: 10ns
Input Cable Length, Max 250m

MECHANICAL:

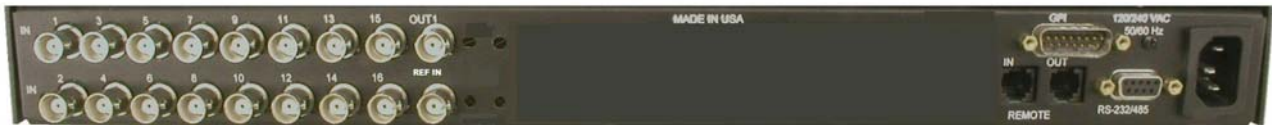
Height: 1.75"
Width: 19"
Depth: 8.7" deep
Weight: 6.8 lbs

ENVIRONMENTAL:

Temperature: 0° to 50°, ambient
Humidity: 0% to 90% non-condensing

POWER:

Input: 120/240 VAC ±10% 50/60 Hz
Power: 8 Watts



LINK ELECTRONICS, INC.

2137 Rust Ave.
Cape Girardeau, MO 63703
Phone: 573 334 4433
FAX: 573 334 9255

PROFESSIONAL SERIES--

stand-alone system products--by LINK

Free Manuals Download Website

<http://myh66.com>

<http://usermanuals.us>

<http://www.somanuals.com>

<http://www.4manuals.cc>

<http://www.manual-lib.com>

<http://www.404manual.com>

<http://www.luxmanual.com>

<http://aubethermostatmanual.com>

Golf course search by state

<http://golfingnear.com>

Email search by domain

<http://emailbydomain.com>

Auto manuals search

<http://auto.somanuals.com>

TV manuals search

<http://tv.somanuals.com>