



Using Your
Adapter



AE1200/AE2500 | Wireless-N USB Network Adapter

Contents

Product Overview

Features	1
----------	---

Installation

Installation	2
--------------	---

Wireless Network Configuration

Windows 7	3
Windows Vista	4
Windows XP	6

Troubleshooting

AE1200/AE2500	9
---------------	---

Specifications

Linksys AE1200	10
Linksys AE1200	11

Product Overview

Thank you for choosing the Linksys Wireless-N USB adapter. Using the latest wireless networking technology, the adapter adds or upgrades wireless connectivity on your Windows-based desktop or laptop computer. To help protect your data and privacy, you can use Wi-Fi Protected Access 2 (WPA2) encryption to protect your wireless connection.

Features



USB plug: Connect this end to any available USB port on your computer.

LED: Flashes when there is wireless network activity.

Installation

This chapter describes the procedure for installing the adapter.

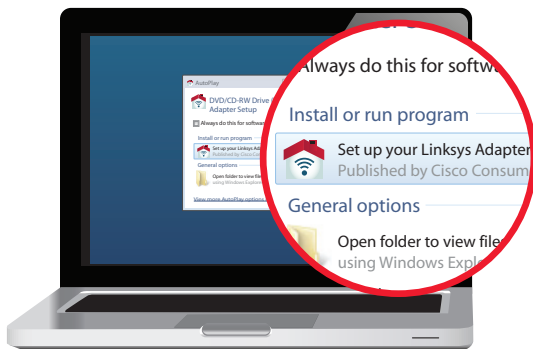
Installation

To install the adapter:

1. Insert the CD into your CD or DVD drive.



2. Click **Set up your Linksys Adapter**.



If you do not see this, access setup on the CD directly. To do so, perform the following steps for your specific operating system:

Windows 7

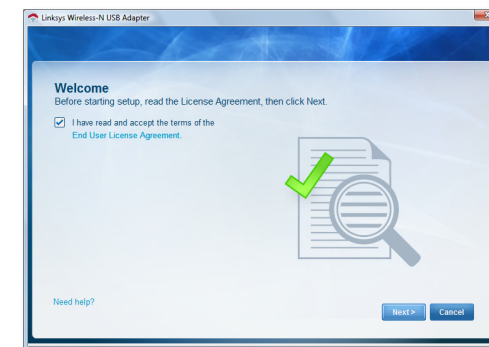
- a. Go to **Start > Computer**.
- b. Double-click your CD or DVD drive.

Windows Vista

- a. Go to **Start > Computer**.
- b. Double-click your CD or DVD drive.

Windows XP

- a. Go to **Start > My Computer** and select your CD or DVD drive.
 - b. Double-click **Setup.exe**.
3. Follow the on-screen instructions to finish setting up your Linksys wireless adapter.



Note


You need to run Setup only once to install your adapter. After you run Setup, your computer recognizes the adapter each time it is connected to your computer's USB port.

Wireless Network Configuration

To configure the adapter's wireless connection settings, use a wireless network configuration utility. If you have installed such a utility on your computer, or if your computer came with one already installed, refer to that utility's documentation for instructions on use. Otherwise, follow the instructions in the appropriate section below to use your operating system's built-in utility:

- "Windows 7" on page 3
- "Windows Vista" on page 4
- "Windows XP" on page 6

Windows 7

After you have installed the adapter, the *Wireless Network Configuration* utility icon appears on your computer's system tray. (If you do not see the icon, click the *Show hidden icons* arrow  in the system tray.)



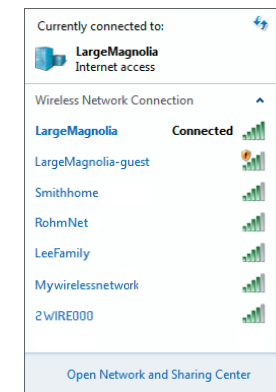
When your mouse pointer hovers over the icon, the status information of your wireless connection appears.



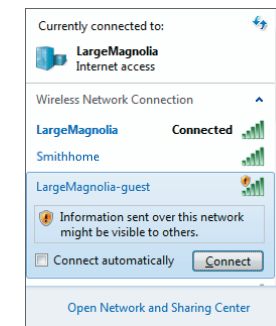
New Wireless Connection

To connect to a different wireless network:

1. Click the **Wireless Network Configuration** utility icon. A list of available wireless networks appears.

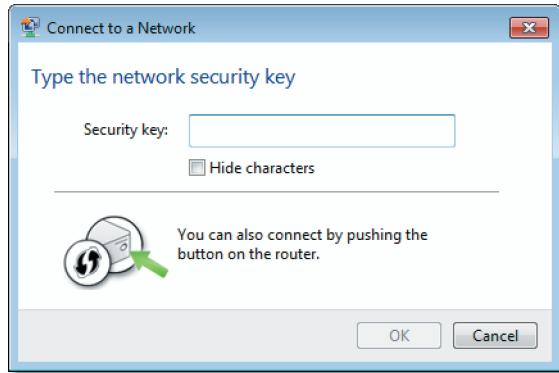


2. Select your network, and then click **Connect**.

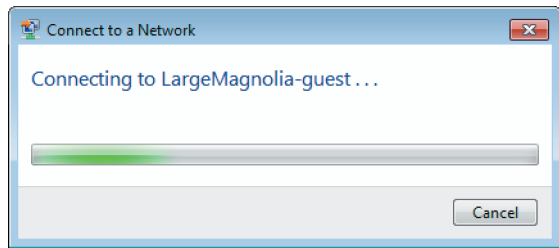


3. If your network does not use wireless security, go to step 5.

4. Enter the Wi-Fi Protected Access (WPA/WPA2) passphrase or the Wired Equivalent Privacy (WEP) key (depending on your type of security), then click **OK**.



This screen appears while the adapter connects to your network. Do not cancel, unless you want to end the connection.



Your computer is now connected to your wireless network.

Note

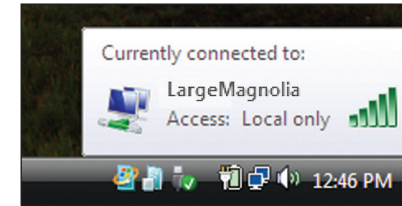
For help with the Wireless Network Configuration utility, click **Start**, then click **Help and Support**.

Windows Vista

After you have installed the adapter, the *Wireless Network Configuration* utility icon appears on your computer's system tray.



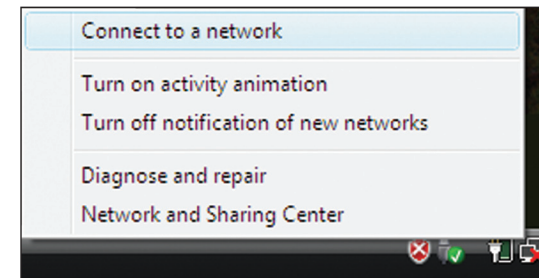
When your mouse pointer hovers over the icon, the status information of your wireless connection appears.



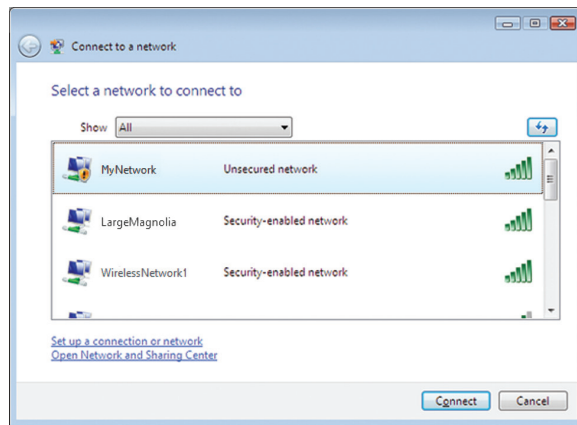
New Wireless Connection

To connect to a different wireless network:

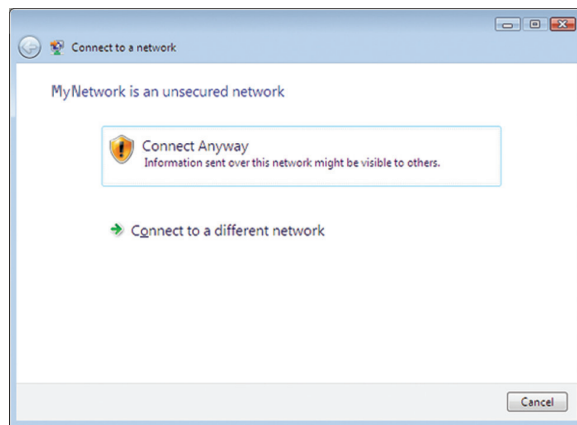
1. Right-click the **Wireless Network Configuration** utility icon.
2. Click **Connect to a network**.



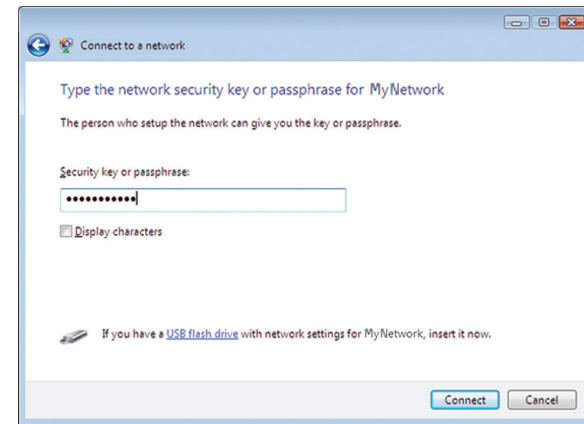
3. Select your network, then click **Connect**.



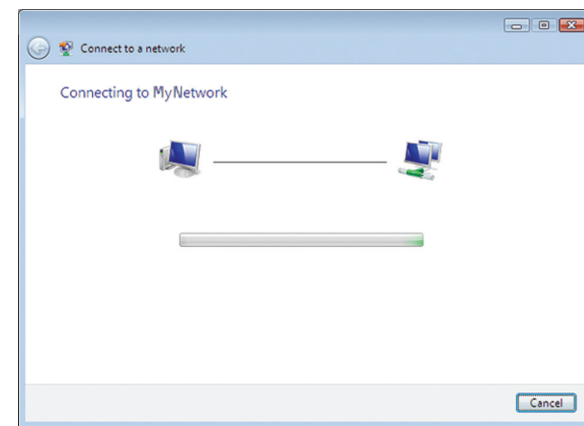
4. If your network uses wireless security, go to Step 5.
If your network does **not** use wireless security, this screen appears.
- a. To connect to your unsecured network, click **Connect Anyway** and go to Step 6.



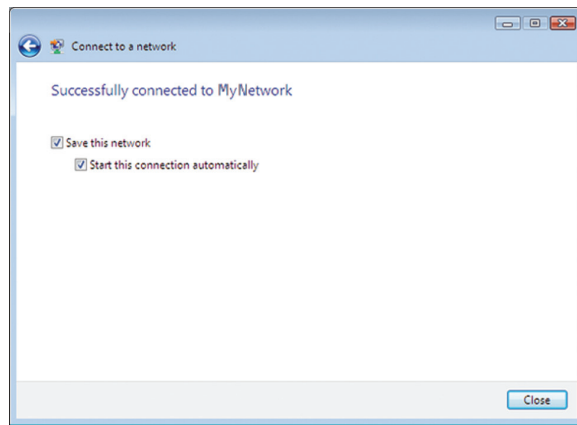
5. Enter the Wi-Fi Protected Access (WPA/WPA2) passphrase or the Wired Equivalent Privacy (WEP) key (depending on your type of security), then click **Connect**.



This screen appears while the adapter connects to your network. Do not cancel, unless you want to end the installation.

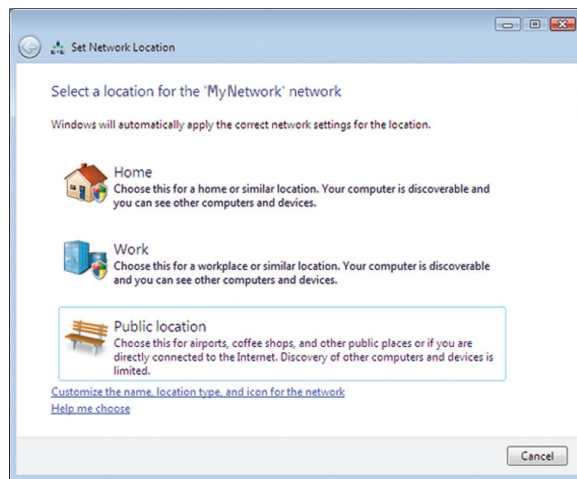


This screen appears when you are connected to your network.



6. If you want to save your settings, select **Save this network**.
7. Click **Close**.

The *Set Network Location* screen may appear. This screen helps apply the correct settings for your type of location.



- a. Click **Home**, **Work**, or **Public location**, then click **Close** on the resulting screen.

Note

For help with the Wireless Network Configuration utility, click **Start**, then click **Help and Support**.

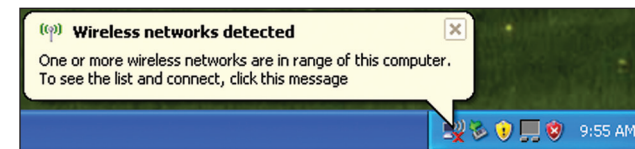
Your computer is now connected to your wireless network.

Windows XP

After you have installed the adapter, the **Windows XP Wireless Zero Configuration Utility** icon appears on your computer's system tray.



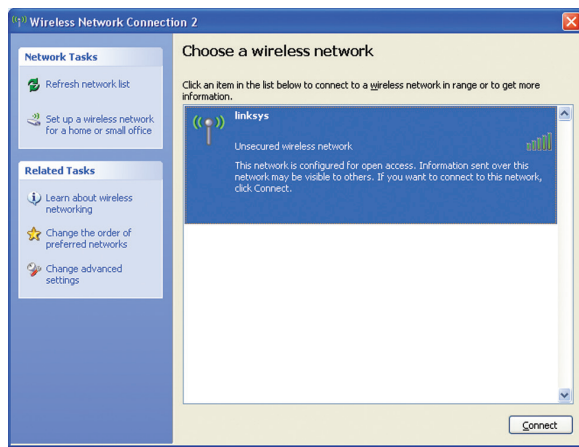
When your mouse pointer hovers over the icon, the status information of your wireless connection appears.



New Wireless Connection

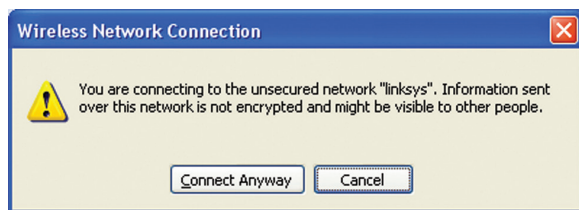
To connect to a new wireless network:

1. Right-click the **Windows XP Wireless Zero Configuration** icon in your computer's system tray, then click **View Available Wireless Networks**. A window displays the available wireless networks.
2. Select the network that you want, then click **Connect**.

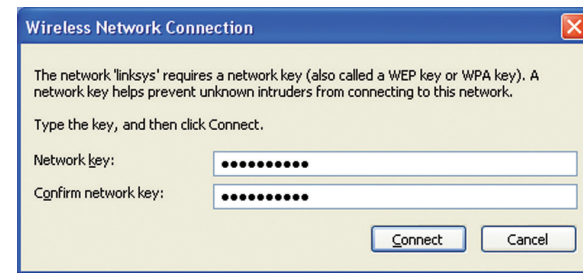


If the network uses wireless security, go to Step 4. Otherwise, continue to Step 3.

3. Click **Connect Anyway** to connect the adapter to your unsecured network, then go to Step 5.



4. If your network uses Wired Equivalent Privacy (WEP) wireless security, enter the WEP Key in the *Network key* and *Confirm network key* fields. If your network uses Wi-Fi Protected Access (WPA/WPA2) wireless security, enter the passphrase in the *Network key* and *Confirm network key* fields. Click **Connect**.



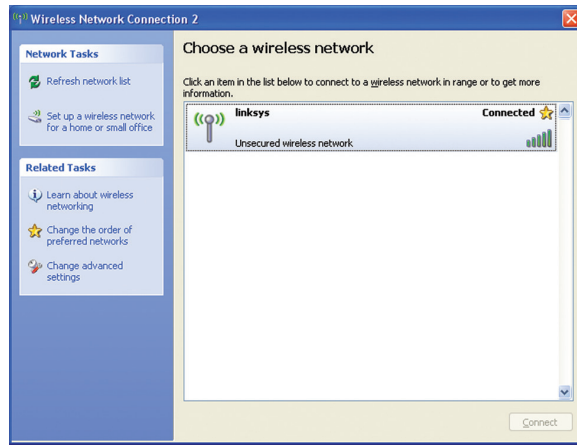
Note

Windows XP Wireless Zero Configuration does not support the use of a WEP passphrase. Enter the exact WEP key used by your wireless router or access point.

Note

If your network is using WPA2 security, make sure that you have installed the Update for Windows XP (KB893357), available at www.microsoft.com.

Your wireless network will appear as *Connected* when your connection is active.



Note

For help with the Wireless Network Configuration utility, click **Start**, then click **Help and Support**.

Your computer is now connected to your wireless network.

Troubleshooting

AE1200/AE2500

Your computer does not recognize the adapter.

- Make sure that the adapter is properly inserted into your computer's USB slot.
- Connect the adapter into a different USB port.

The adapter does not work properly.

Remove the adapter, and then reinsert it into the computer's USB slot.

Your computer cannot communicate with the other computers on your wireless network.

1. Make sure that the computers are powered on.
2. Make sure that the adapter is configured with the same Wireless Network Name (also called the SSID or Service Set Identifier) and wireless security settings as the other computers on your wireless network.

Note

If your questions are not addressed here, refer to our support section on the web at Linksys.com/support.

Specifications

Linksys AE1200

Model Name	Linksys AE1200
Description	High Performance Wireless-N USB Adapter
Model Number	AE1200
Standards	802.11b, 802.11g, 802.11n
Interface	USB 2.0
LEDs	Link/Act
Antennas	2 Internal Single-band
Transmitted Power	802.11b: 15 dBm ± 2.0 802.11g: 15 dBm ± 2.0 802.11n: MCS15 (20 MHz): 15 dBm ± 2.0 MCS8 (20 MHz): 15 dBm ± 2.0 MCS7 (20 MHz): 15 dBm ± 2.0 MCS0 (20 MHz): 15 dBm ± 2.0 MCS15 (40 MHz): 13 dBm ± 2.0 MCS8 (40 MHz): 13 dBm ± 2.0 MCS7 (40 MHz): 13 dBm ± 2.0 MCS0 (40 MHz): 15 dBm ± 2.0
Receive Sensitivity	802.11b: (+2/-4 dB) DBPSK: -96 dBm Typical DQPSK: -96 dBm Typical CCK: -90 dBm Typical 802.11g: (+2/-4 dB) BPSK: -93 dBm Typical QPSK: -90 dBm Typical 16-QAM: -84 dBm Typical 64-QAM: -76 dBm Typical 802.11n: (+2/-4 dB) -72 dBm @MCS15 (20 MHz) -90 dBm @MCS0 (20 MHz) -68 dBm @MCS15 (40 MHz) -87 dBm @MCS0 (40 MHz)

Antenna Gain in dBi	Antenna 1: ≤ -1.2 dBi Antenna 2: ≤ -1.0 dBi
Power Consumption	TX: MCS15 @20 MHz: 278 mA MCS8 @20 MHz: 371 mA MCS15 @40 MHz: 266 mA MCS8 @40 MHz: 344 mA RX: 20 MHz: 111 mA Standby: 37 mA Radio Off: 37 mA
Security Features	WEP, WPA & WPA2 Personal, WPA & WPA2 Enterprise, WPS
Security Key Bits	Up to 128-Bit Encryption
OS Requirements	Windows XP, Windows Vista, Windows Vista 64-bit Edition, Windows 7, or Windows 7 64-bit

Environmental

Dimensions	2.87" x 0.94" x 0.35" (73.0 x 23.8 x 9.0 mm)
Weight	0.39 oz (11 g)
Certification	FCC, CE, IC, UL, RoHS, WEEE, IDA, C-Tick, Wi-Fi B/G/N
Operating Temp.	32 to 104°F (0 to 40°C)
Storage Temp.	-4 to 158°F (-20 to 70°C)
Operating Humidity	10 to 85% Noncondensing
Storage Humidity	5 to 90% Noncondensing
Model Name	Linksys AE2500
Description	High Performance Dual-Band Wireless-N USB Adapter

Specifications are subject to change without notice.

Linksys AE2500

Model Number	AE2500
Standards	802.11a, 802.11b, 802.11g, 802.11n
Interface	USB 2.0
LEDs	Link/Act
Antennas	2 Internal Dual-band (selectable)
Transmitted Power	802.11a: 14 dBm ± 2.0 802.11b: 15 dBm ± 2.0 802.11g: 15 dBm ± 2.0 802.11n: MCS15 (20 MHz): 14 dBm ± 2.0 MCS8 (20 MHz): 14 dBm ± 2.0 MCS7 (20 MHz): 14 dBm ± 2.0 MCS0 (20 MHz): 14 dBm ± 2.0 MCS15 (40 MHz): 13 dBm ± 2.0 MCS8 (40 MHz): 13 dBm ± 2.0 MCS7 (40 MHz): 13 dBm ± 2.0 MCS0 (40 MHz): 13 dBm ± 2.0
Receive Sensitivity	802.11b: (+2/-4 dB) DBPSK: -96 dBm Typical DQPSK: -96 dBm Typical CCK: -90 dBm Typical 802.11g: (+2/-4 dB) BPSK: -93 dBm Typical QPSK: -90 dBm Typical 6-QAM: -84 dBm Typical 64-QAM: -76 dBm Typical 802.11n: (+2/-4 dB) -72 dBm @MCS15 (20 MHz) -90 dBm @MCS0 (20 MHz) -68 dBm @MCS15 (40 MHz) -87 dBm @MCS0 (40 MHz)

Antenna Gain in dBi	Antenna 1 2.4 GHz: ≤ 3 dBi 5.15~5.35 GHz: ≤ 1.5 dBi 5.5~5.85 GHz: ≤ 4.5 dBi Antenna 2 2.4 GHz: ≤ 4.0 dBi 5.15~5.35 GHz: ≤ 1.0 dBi 5.5~5.85 GHz: ≤ 5.0 dBi
Power Consumption	TX: MCS15 @20 MHz: 364 mA MCS8 @20 MHz: 447 mA MCS15 @40 MHz: 316 mA MCS8 @40 MHz: 430 mA RX: 20 MHz: 176 mA 40 MHz: 173 mA Standby: 48 mA Radio Off: 48 mA
Security Features	WEP, WPA & WPA2 Personal, WPA & WPA2 Enterprise, WPS
Security Key Bits	Up to 128-Bit Encryption
OS Requirements	Windows XP, Windows Vista, Windows Vista 64-bit Edition, Windows 7, or Windows 7 64-bit
Environmental	
Dimensions	2.87" x 0.94" x 0.35" (73.0 x 23.8 x 9.0 mm)
Weight	0.39 oz (11 g)
Certification	FCC, CE, IC, UL, RoHS, WEEE, IDA, C-Tick, Wi-Fi A/B/G/N
Operating Temp.	32 to 104°F (0 to 40°C)
Storage Temp.	-4 to 158°F (-20 to 70°C)
Operating Humidity	10 to 85% Noncondensing
Storage Humidity	5 to 90% Noncondensing

Specifications are subject to change without notice.

Visit linksys.com/support for award-winning 24/7 technical support



Cisco, the Cisco logo, and Linksys are trademarks or registered trademarks of Cisco and/or its affiliates in the United States and other countries. A listing of Cisco's trademarks can be found at www.cisco.com/go/trademarks. All other trademarks mentioned in this document are the property of their respective owners.

© 2011 Cisco and/or its affiliates. All rights reserved.

Free Manuals Download Website

<http://myh66.com>

<http://usermanuals.us>

<http://www.somanuals.com>

<http://www.4manuals.cc>

<http://www.manual-lib.com>

<http://www.404manual.com>

<http://www.luxmanual.com>

<http://aubethermostatmanual.com>

Golf course search by state

<http://golfingnear.com>

Email search by domain

<http://emailbydomain.com>

Auto manuals search

<http://auto.somanuals.com>

TV manuals search

<http://tv.somanuals.com>