

4-Port SSL/IPSec VPN Router

Package Contents

- 4-Port SSL/IPSec VPN Router
- User Guide on CD-ROM
- Network Cable
- Power Adapter
- Stands
- Quick Installation
- Registration Card



QUICK INSTALLATION

BUSINESS SERIES



1 Connect the Router

- A** Make sure that all of your hardware is powered off, including the Router, PCs, switches, and cable or DSL modem.
- B** Connect your cable or DSL modem's Ethernet cable to the Router's Internet port.
- C** Power on the cable or DSL modem.
- D** Connect one end of an Ethernet network cable to one of the numbered ports on the back of the Router. Connect the other end to an Ethernet port on a network device, e.g., a PC, print server, hub, or switch.

Repeat this step to connect more PCs or other network devices to the Router.

- E** Connect the included power adapter to the Router's Power port, and then plug the power adapter into an electrical outlet.

The Power LED on the front panel will light up as soon as the power adapter is connected properly.

- F** Power on the PC you will use to configure the Router.



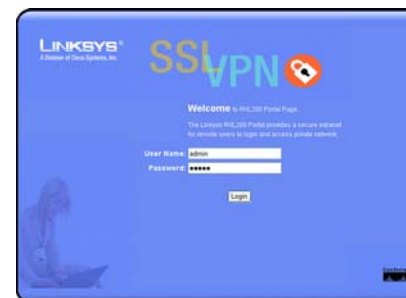
2 Configure the Router

- A** Launch your PC's web browser, and enter the Router's default IP address, **192.168.1.1**, in the *Address* field. Press the **Enter** key.
- B** A screen will appear asking you for your User Name and Password. Enter **admin** in the *User Name* field, and enter **admin** in the *Password* field. Then click the **Login** button.
- C** You will be asked to install the Web Cache Cleaner application. This will prompt any user of the Router to delete all temporary Internet files, cookies, and browser history when the user logs out or closes the web browser window. (The ActiveX web cache control will be ignored by web browsers that do not support ActiveX.)

Click the link to install the Web Cache Cleaner.

- D** The *Security Warning* screen will appear. Click the **Yes** button.

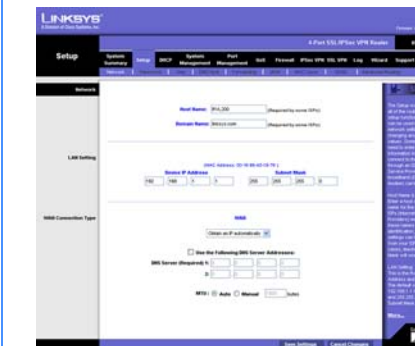
- E** The Web Cache Cleaner will be installed in C:\WINDOWS\Downloaded Program Files.



- F** The *System Summary* screen of the Web-based Utility will appear. Click the **Setup** tab.

- G** If requested by your Internet Service Provider (ISP), complete the *Host Name* and *Domain Name* fields. (These are usually requested by cable ISPs.) Otherwise, leave them blank.

- H** For the WAN Connection Type setting, four connection types are offered through the drop-down men. Depending on which connection type you select, you will see various settings.



Obtain an IP Automatically

- 1 If your ISP automatically assigns an IP address, select **Obtain an IP automatically**. (Most cable modem subscribers use this connection type.) Your ISP will assign these values.
- 2 If you select **Use the Following DNS Server Addresses**, enter your DNS server IP address(es). (Enter at least one.)
- 3 Click **Save Settings**, and go to Step I.

WAN

Obtain an IP automatically

Use the Following DNS Server Addresses:

DNS Server (Required) 1: 0 . 0 . 0 . 0

2: 0 . 0 . 0 . 0

Obtain an IP automatically

Static IP

- 1 If you use a permanent IP address, select **Static IP**.
- 2 Enter your settings in the *Specify WAN IP Address, Subnet Mask, Default Gateway Address, and DNS Server* fields (at least one DNS Server IP address is required). Check your service installation receipt for this information; otherwise, request these settings from your ISP.
- 3 Click **Save Settings**, and go to Step I.

WAN

Static IP

Specify WAN IP Address: 0 . 0 . 0 . 0

Subnet Mask: 255 . 255 . 255 . 0

Default Gateway Address: 0 . 0 . 0 . 0

DNS Server (Required) 1: 0 . 0 . 0 . 0

2: 0 . 0 . 0 . 0

Static IP

PPPoE

- 1 Some DSL-based ISPs use Point-to-Point Protocol over Ethernet (PPPoE) to establish Internet connections. If your ISP says that you are connecting through PPPoE or if you normally enter a user name and password to access the Internet, select **PPPoE**.
- 2 Enter your User Name and Password. The maximum number of characters is 60.
- 3 Select **Keep Alive** if you always want to be connected to your ISP, or select **Connect on Demand** if you are charged for the time that you are connected to your ISP.
- 4 Click **Save Settings**, and go to Step I.

WAN

PPPoE

User Name: _____

Password: _____

Connect on Demand: Max Idle Time 5 _____ Min.

Keep Alive: Redial Period 30 _____ Sec.

PPPoE

PPTP

Point to Point Tunneling Protocol (PPTP) is a service used in Europe and Israel only. If you are using a PPTP connection, check with your ISP for the necessary setup information. When you are finished, click **Save Settings**.

- I** If you haven't already done so, click **Save Settings**. Then close the web browser.
- J** Restart or power on your PCs so they can obtain the Router's new settings.
- K** To test the Router's settings, open your web browser from any computer. In the browser's *Address* field, enter www.linksys.com/registration and press the **Enter** key.

Congratulations! The installation of the 4-Port SSL/IPSec VPN Router is complete.

When you or another user logs out of the Web-based Utility, you will see a *Warning* screen. It will ask you to confirm that you want the Web Cache Cleaner to delete the History Item for the Router. Click the **Yes** button.

WAN

PPTP

Specify WAN IP Address: 0 . 0 . 0 . 0

Subnet Mask: 255 . 255 . 255 . 0

Default Gateway Address: 0 . 0 . 0 . 0

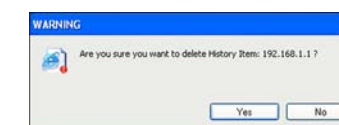
User Name: _____

Password: _____

Connect on Demand: Max Idle Time 5 _____ Min.

Keep Alive: Redial Period 30 _____ Sec.

PPTP



History Item

Before you configure the Router for SSL VPN tunnels, change the Router's password and remote management settings.

- A** Access the Web-based Utility (described in Step 2).
- B** Click the **Setup** tab.
- C** Click the **Password** tab.
- D** In the *Old Password* field, enter **admin** (the default).
- E** In the *New Password* field, enter a new password for the Router. Your password must have 15 or fewer characters and cannot contain any spaces.
- F** Click **Save Settings**.
- G** Click the **Firewall** tab.
- H** Click **Enable** for the Remote Management setting. Enter the port number for remote access. The default port is **80**.
- I** Click **Save Settings**.

NOTE: For information about more advanced settings, including the SSL or IPSec VPN configuration, refer to the User Guide on the CD-ROM.

LINKSYS®

A Division of Cisco Systems, Inc.

For additional information or troubleshooting help, refer to the User Guide on the Setup CD-ROM. You can also call or e-mail for further support.

24-hour Technical Support

800-326-7114
(toll-free from US or Canada)

E-mail Support

support@linksys.com

Website

<http://www.linksys.com> or
<http://support.linksys.com>

RMA (Return Merchandise Authorization)

<http://www.linksys.com/support>

FTP Site

<ftp://ftp.linksys.com>

Sales Information

800-546-5797 (800-LINKSYS)

Linksys is a registered trademark or trademark of Cisco Systems, Inc. and/or its affiliates in the U.S. and certain other countries. Copyright © 2006 Cisco Systems, Inc. All rights reserved.

Free Manuals Download Website

<http://myh66.com>

<http://usermanuals.us>

<http://www.somanuals.com>

<http://www.4manuals.cc>

<http://www.manual-lib.com>

<http://www.404manual.com>

<http://www.luxmanual.com>

<http://aubethermostatmanual.com>

Golf course search by state

<http://golfingnear.com>

Email search by domain

<http://emailbydomain.com>

Auto manuals search

<http://auto.somanuals.com>

TV manuals search

<http://tv.somanuals.com>