

# LINKSYS®

A Division of Cisco Systems, Inc.



2,4GHz  
802.11g **Wireless-G**

Broadband Router

User Guide

WIRELESS

Model No. **WRK54G (EU/LA)**

CISCO SYSTEMS



## Copyright and Trademarks

Specifications are subject to change without notice. Linksys is a registered trademark or trademark of Cisco Systems, Inc. and/or its affiliates in the U.S. and certain other countries. Copyright © 2004 Cisco Systems, Inc. All rights reserved. Other brands and product names are trademarks or registered trademarks of their respective holders.

## How to Use This User Guide

This User Guide has been designed to make understanding networking with the Wireless-G Broadband Router easier than ever. Look for the following items when reading this User Guide:



This checkmark means there is a note of interest and is something you should pay special attention to while using the Wireless-G Broadband Router.



This exclamation point means there is a caution or warning and is something that could damage your property or the Wireless-G Broadband Router.



This question mark provides you with a reminder about something you might need to do while using the Wireless-G Broadband Router.

In addition to these symbols, there are definitions for technical terms that are presented like this:

***word: definition.***

Also, each figure (diagram, screenshot, or other image) is provided with a figure number and description, like this:

**Figure 0-1: Sample Figure Description**

Figure numbers and descriptions can also be found in the “List of Figures” section in the “Table of Contents”.

# Table of Contents

<b>Chapter 1: Introduction</b>	<b>1</b>
Welcome	1
What's in this Guide?	2
<b>Chapter 2: Planning Your Wireless Network</b>	<b>4</b>
Network Topology	4
Ad-Hoc versus Infrastructure Mode	4
Network Layout	4
<b>Chapter 3: Getting to Know the Wireless-G Broadband Router</b>	<b>6</b>
The Back	6
The Front Panel	7
<b>Chapter 4: Connecting the Wireless-G Broadband Router</b>	<b>8</b>
Hardware Installation for Connection to Your Broadband Modem	8
<b>Chapter 5: Configuring the PCs</b>	<b>10</b>
Overview	10
Configuring Windows 98SE and Millennium PCs	10
Configuring Windows 2000 PCs	11
Configuring Windows XP PCs	12
<b>Chapter 6: Configuring the Wireless-G Broadband Router</b>	<b>13</b>
Overview	13
The Setup Tab - Basic Setup	14
The Setup Tab - DDNS	18
The Setup Tab - MAC Address Clone	19
The Setup Tab - Advanced Routing	20
The Wireless Tab - Basic Wireless Settings	21
The Wireless Tab - Wireless Security	22
The Wireless Tab - Wireless Network Access	24
The Wireless Tab - Advanced Wireless Settings	25
The Security Tab - Filter	27
The Security Tab - VPN Passthrough	28
The Applications and Gaming Tab - Port Range Forwarding	29
The Applications and Gaming Tab - Port Triggering	30
The Applications and Gaming Tab - UPnP Forwarding	30

## Wireless-G Broadband Router

The Applications and Gaming Tab - DMZ	31
The Administration Tab - Management	32
The Administration Tab - Log	33
The Administration Tab - Factory Defaults	34
The Administration Tab - Firmware Upgrade	34
The Status Tab - Router	35
The Status Tab - Local Network	36
The Status Tab - Wireless	37
<b>Appendix A: Troubleshooting</b>	<b>38</b>
Common Problems and Solutions	38
Frequently Asked Questions	46
<b>Appendix B: Wireless Security</b>	<b>52</b>
Security Precautions	52
Security Threats Facing Wireless Networks	52
<b>Appendix C: Upgrading Firmware</b>	<b>55</b>
<b>Appendix D: Windows Help</b>	<b>56</b>
<b>Appendix E: Finding the MAC Address and IP Address for Your Ethernet Adapter</b>	<b>57</b>
Windows 98SE or Me Instructions	57
Windows 2000 or XP Instructions	57
For the Router's Web-based Utility	58
<b>Appendix F: Glossary</b>	<b>59</b>
<b>Appendix G: Specifications</b>	<b>65</b>
<b>Appendix H: Warranty Information</b>	<b>67</b>
<b>Appendix I: Regulatory Information</b>	<b>68</b>
<b>Appendix J: Contact Information</b>	<b>70</b>

# List of Figures

Figure 3-1: The Broadband Router's Back Panel	6
Figure 3-2: The Broadband Router's Front Panel	7
Figure 4-1: Connecting Your Internet Connection	8
Figure 4-2: Connecting Your Network Devices	9
Figure 4-3: Connecting the Power	9
Figure 5-1: Configuration Tab	10
Figure 5-2: IP Address Tab	10
Figure 5-3: Properties	11
Figure 5-4: TCP/IP	11
Figure 5-5: IP Address	11
Figure 5-6: Properties	12
Figure 5-7: TCP/IP	12
Figure 5-8: IP Address	12
Figure 6-1: Password Screen	13
Figure 6-2: Setup Tab - Basic Setup	14
Figure 6-3: DHCP Connection Type	14
Figure 6-4: Static IP Connection Type	14
Figure 6-5: PPPoE Connection Type	15
Figure 6-6: PPTP Connection Type	15
Figure 6-7: HeartBeat Signal Connection Type	16
Figure 6-8: Optional Settings	16
Figure 6-9: Router IP	17
Figure 6-10: Network Address Server Settings	17
Figure 6-11: Time Setting	17
Figure 6-12: Setup Tab - DDNS	18
Figure 6-13: Setup Tab - TZO	18
Figure 6-14: Setup Tab - MAC Address Clone	19
Figure 6-15: Setup Tab - Advanced Routing	20
Figure 6-16: Setup Tab - Routing Table	20
Figure 6-17: Wireless Tab - Basic Wireless	21

Figure 6-18: Wireless Tab - Wireless Security (WPA Pre-Shared Key)	22
Figure 6-19: Wireless Tab - Wireless Security (WPA RADIUS)	22
Figure 6-20: Wireless Tab - Wireless Security (WEP)	23
Figure 6-21: Wireless Tab - Wireless Network Access	24
Figure 6-22: Wireless Client MAC List	24
Figure 6-23: Wireless Tab - Advanced Wireless Settings	25
Figure 6-24: Security Tab - Filter	27
Figure 6-25: List of PCs	27
Figure 6-26: Security Tab - VPN Passthrough	28
Figure 6-27: Applications and Gaming Tab - Port Range Forward	29
Figure 6-28: Applications and Gaming Tab - Port Triggering	30
Figure 6-29: Applications and Gaming Tab - UPnP Forwarding	30
Figure 6-30: Applications and Gaming Tab - DMZ	31
Figure 6-31: Administration Tab - Management	32
Figure 6-32: Backup and Restore Configuration	32
Figure 6-33: Administration Tab - Log	33
Figure 6-34: Incoming Log Table	33
Figure 6-35: The Administration Tab - Factory Defaults	34
Figure 6-36: Administration Tab - Firmware Upgrade	34
Figure 6-37: Status Tab - Router	35
Figure 6-38: Status Tab - Local Network	36
Figure 6-39: DHCP Client Table	36
Figure 6-40: Status Tab - Wireless	37
Figure C-1: Upgrade Firmware	55
Figure E-1: IP Configuration Screen	57
Figure E-2: MAC Address/Adapter Address	57
Figure E-3: MAC Address/Physical Address	57
Figure E-4: MAC Address Filter List	58
Figure E-5: MAC Address Clone	58

# Chapter 1: Introduction

## Welcome

Thank you for choosing the Linksys Wireless-G Broadband Router. The Wireless-G Broadband Router will allow you to network wirelessly better than ever, sharing Internet access, files and fun, easily and securely.

How does the Wireless-G Broadband Router do all of this? A router is a device that allows access to an Internet connection over a network. With the Wireless-G Broadband Router, this access can be shared over the four switched ports or via the wireless broadcast at either 11Mbps for Wireless-B or 54Mbps for Wireless-G. In addition, the WPA standard provides greater security opportunities while the whole network is protected through a NAT technology. All of these security features, as well as full configurability, are accessed through the easy-to-use browser-based utility.

But what does all of this mean?

Networks are useful tools for sharing computer resources. You can access one printer from different computers and access data located on another computer's hard drive. Networks are even used for playing multiplayer video games. So, networks are not only useful in homes and offices, they can also be fun.

PCs on a wired network create a LAN, or Local Area Network. They are connected with Ethernet cables, which is why the network is called "wired".

PCs equipped with wireless cards or adapters can communicate without cumbersome cables. By sharing the same wireless settings, within their transmission radius, they form a wireless network. This is sometimes called a WLAN, or Wireless Local Area Network. The Wireless-G Broadband Router bridges wireless networks of both 802.11b and 802.11g standards and wired networks, allowing them to communicate with each other.

With your networks all connected, wired, wireless, and the Internet, you can now share files and Internet access—and even play games. All the while, the Wireless-G Broadband Router protects your networks from unauthorized and unwelcome users.

You can use the Setup CD-ROM for first-time installation of the Router, but only if you use a cable modem, or use a DSL modem with a PPPoE, Static IP, or DHCP account from your service provider or pay a flat monthly fee. (Please contact your service provider about your type of connection and account if you don't know what you have.) Users who are charged by the time connected to the Internet, or who use PPTP, RAS, or HBS, must use the instructions in this guide to help you connect the Wireless-G Broadband Router.

***LAN (Local Area Network): The computers and networking products that make up the network in your home or office***

## What's in this Guide?

This user guide covers the steps for setting up and using the Wireless-G Broadband Router.

- **Chapter 1: Introduction**  
This chapter describes the Router's applications and this User Guide.
- **Chapter 2: Planning Your Wireless Network**  
This chapter describes the basics of wireless networking.
- **Chapter 3: Getting to Know the Wireless-G Broadband Router**  
This chapter describes the physical features of the Router.
- **Chapter 4: Connecting the Wireless-G Broadband Router**  
This chapter instructs you on how to connect the Router to your network.
- **Chapter 5: Configuring the PCs**  
This chapter instructs you on how to configure your PC(s) for a DHCP connection, if the network settings are not already set to DHCP.
- **Chapter 6: Configuring the Wireless-G Broadband Router**  
This chapter explains how to use the Web-Based Utility to configure the settings on the Wireless-G Broadband Router.
- **Appendix A: Troubleshooting**  
This appendix describes some problems and solutions, as well as frequently asked questions, regarding installation and use of the Wireless-G Broadband Router.
- **Appendix B: Wireless Security**  
This appendix explains the risks of wireless networking and some solutions to reduce the risks.
- **Appendix C: Upgrading Firmware**  
This appendix instructs you on how to upgrade the firmware on the Router should you need to do so.
- **Appendix D: Windows Help**  
This appendix describes how you can use Windows Help for instructions about networking, such as installing the TCP/IP protocol.
- **Appendix E: Finding the MAC Address and IP Address for your Ethernet Adapter.**  
This appendix describes how to find the MAC address for your computer's Ethernet adapter so you can use the MAC filtering and/or MAC address cloning feature of the Router.



## Wireless-G Broadband Router

- **Appendix F: Glossary**  
This appendix gives a brief glossary of terms frequently used in networking.
- **Appendix G: Specifications**  
This appendix provides the technical specifications for the Router.
- **Appendix H: Warranty Information**  
This appendix supplies the warranty information for the Router.
- **Appendix I: Regulatory Information**  
This appendix supplies the regulatory information regarding the Router.
- **Appendix J: Contact Information**  
This appendix provides contact information for a variety of Linksys resources, including Technical Support.

# Chapter 2: Planning Your Wireless Network

## Network Topology

A wireless local area network (WLAN) is exactly like a regular local area network (LAN), except that each computer in the WLAN uses a wireless device to connect to the network. Computers in a WLAN share the same frequency channel and SSID, which is an identification name shared by the wireless devices belonging to the same wireless network.

**SSID:** *your wireless network's name.*

## Ad-Hoc versus Infrastructure Mode

Unlike wired networks, wireless networks have two different modes in which they may be set up: infrastructure and ad-hoc. An infrastructure configuration is a WLAN and wired LAN communicating to each other through an access point. An ad-hoc configuration is wireless-equipped computers communicating directly with each other. Choosing between these two modes depends on whether or not the wireless network needs to share data or peripherals with a wired network or not.

**Infrastructure:** *a wireless network that is bridged to a wired network via an access point.*

If the computers on the wireless network need to be accessible by a wired network or need to share a peripheral, such as a printer, with the wired network computers, the wireless network should be set up in Infrastructure mode. The basis of Infrastructure mode centers around a wireless router or an access point, such as the Wireless-G Broadband Router, which serves as the main point of communications in a wireless network. The Router transmits data to PCs equipped with wireless network adapters, which can roam within a certain radial range of the Router. You can arrange the Router and multiple access points to work in succession to extend the roaming range, and you can set up your wireless network to communicate with your Ethernet hardware as well.

**Ad-hoc:** *a group of wireless devices communicating directly to each other (peer-to-peer) without the use of an access point.*

If the wireless network is relatively small and needs to share resources only with the other computers on the wireless network, then the Ad-Hoc mode can be used. Ad-Hoc mode allows computers equipped with wireless transmitters and receivers to communicate directly with each other, eliminating the need for a wireless router or access point. The drawback of this mode is that in Ad-Hoc mode, wireless-equipped computers are not able to communicate with computers on a wired network. And, of course, communication between the wireless-equipped computers is limited by the distance and interference directly between them.

## Network Layout

The Wireless-G Broadband Router has been specifically designed for use with both your 802.11b and 802.11g products. Now, products using these standards can communicate with each other.

## Wireless-G Broadband Router

The Wireless-G Broadband Router is compatible with all 802.11b and 802.11g adapters, such as the Notebook Adapters (WPC54G, WPC11) for your laptop computers, PCI Adapter (WMP54G, WMP11) for your desktop PC, and USB Adapter (WUSB54G, WUSB11) when you want to enjoy USB connectivity. The Broadband Router will also communicate with the Wireless PrintServer (WPS54GU2, WPS11) and Wireless Ethernet Bridges (WET54G, WET11).

When you wish to connect your wireless network with your wired network, you can use the Wireless-G Broadband Router's four LAN ports. To add more ports, any of the Wireless-G Broadband Router's LAN ports can be connected to any of Linksys's switches (such as the EZXS55W or EZXS88W).

With these, and many other, Linksys products, your networking options are limitless. Go to the Linksys website at [www.linksys.com/international](http://www.linksys.com/international) for more information about products that work with the Wireless-G Broadband Router.

# Chapter 3: Getting to Know the Wireless-G Broadband Router

## The Back

The Broadband Router's ports, where the cables are connected, are located on the back panel.

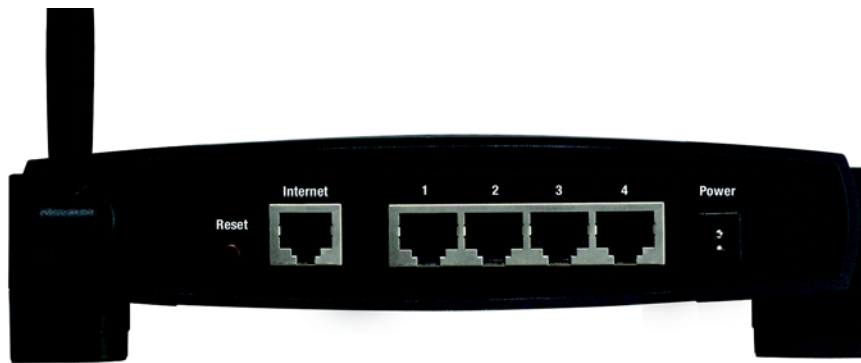


Figure 3-1: The Broadband Router's Back Panel



**Important:** Resetting the Broadband Router will erase all of your settings (WEP Encryption, Wireless and LAN settings, etc.) and replace them with the factory defaults. Do not reset the Broadband Router if you want to retain these settings.

**Reset Button** There are two ways to reset the Broadband Router's factory defaults. Either press the **Reset Button**, for approximately five seconds, or restore the defaults from the Administration tab - Factory Defaults in the Broadband Router's Web-based Utility.

**Internet** The **Internet** port is where you will connect your broadband Internet connection.

**1, 2, 3, 4** These ports (1, 2, 3, 4) connect the Broadband Router to your networked PCs and other Ethernet network devices.

**Power** The **Power** port is where you will connect the power adapter.

## The Front Panel

The Router's LEDs, where information about network activity is displayed, are located on the front panel.



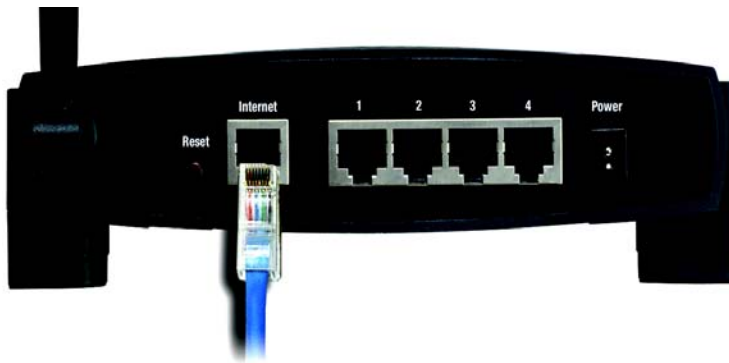
Figure 3-2: The Broadband Router's Front Panel

- |                   |   |
|-------------------|---|
| <b>Power</b>      | Green. The <b>Power</b> LED lights up and will stay on while the Router is powered on. When the Router goes through its self-diagnostic mode during every boot-up, this LED will flash. When the diagnostic is complete, the LED will be solidly lit.   |
| <b>DMZ</b>        | Green. The <b>DMZ</b> LED indicates when the DMZ function is being used. This LED will remain lit as long as DMZ is enabled.  |
| <b>WLAN</b>       | Green. The <b>WLAN</b> LED lights up whenever there is a successful wireless connection. If the LED is flashing, the Broadband Router is actively sending or receiving data over the network.   |
| <b>1, 2, 3, 4</b> | Green. These numbered LEDs, corresponding with the numbered ports on the Broadband Router's back panel, serve two purposes. If the LED is continuously lit, the Broadband Router is successfully connected to a device through that port. A flashing LED indicates network activity over that port. |
| <b>Internet</b>   | Green. The <b>Internet</b> LED lights up when there is a connection made through the Internet port.   |

# Chapter 4: Connecting the Wireless-G Broadband Router

## Hardware Installation for Connection to Your Broadband Modem

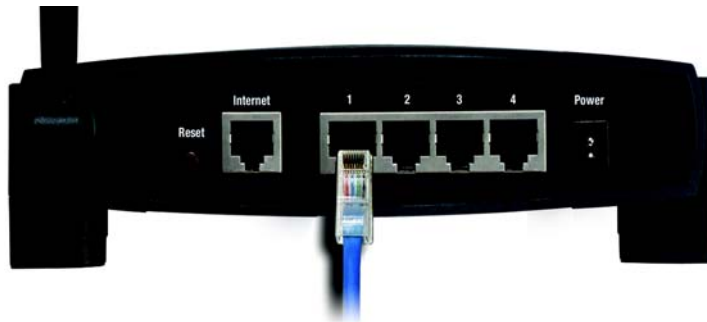
1. Power down your network devices.
2. Locate an optimum location for the Broadband Router. The best place for the Broadband Router is usually at the center of your wireless network, with line of sight to all of your mobile stations.
3. Fix the direction of the antenna. Try to place the Router in a position that will best cover your wireless network. Normally, the higher you place the antenna, the better the performance will be.
4. Connect a standard Ethernet network cable to the Broadband Router's Internet port. Then, connect the other end of the Ethernet cable to your cable or DSL broadband modem.



**Figure 4-1: Connecting Your Internet Connection**

## Wireless-G Broadband Router

5. Connect your network PCs or Ethernet devices to the Broadband Router's numbered ports using standard Ethernet network cabling.



**Figure 4-2: Connecting Your Network Devices**

6. Connect the AC power adapter to the Broadband Router's Power port and the other end into an electrical outlet. Only use the power adapter supplied with the Broadband Router. Use of a different adapter may result in product damage.



**Figure 4-3: Connecting the Power**

**Now that the hardware installation is complete, proceed to “Chapter 5: Configuring the PCs,” for directions on how to configure your PCs.**



**IMPORTANT:** To connect your wireless PCs, you must first complete the configuration of the Router with a wired connection. Then, follow the instructions on your wireless adapter to connect a wireless PC to the Router.



**IMPORTANT:** Make sure you use the power adapter that is supplied with the Router. Use of a different power adapter could damage the Router.

# Chapter 5: Configuring the PCs

## Overview

The instructions in this chapter will help you configure each of your PCs, so they will be able to communicate with the Router. To do this, you need to configure your PC's network settings to obtain an IP (or TCP/IP) address automatically, so your PC can function as a DHCP client. Computers use IP addresses to communicate with the Router and each other across a network, such as the Internet.

First, find out which Windows operating system your computer is running. You can find out by clicking the **Start** button. Read the side panel of the Start menu to find out which operating system your PC is running.

You may need to do this for each computer you are connecting to the Router.

The next few pages tell you, step by step, how to configure your network settings based on the type of Windows operating system you are using. Make sure that an Ethernet or wireless adapter (also known as a network adapter) has been successfully installed in each PC you will configure. Once you've configured your computers, continue to "Chapter 6: Configuring the Wireless-G Broadband Router."

## Configuring Windows 98SE and Millennium PCs

1. Click the **Start** button. Select **Settings** and click the **Control Panel** icon. Double-click the **Network** icon.
2. On the Configuration tab, select the **TCP/IP** line for the applicable Ethernet adapter, as shown in Figure 5-1. Do not choose a TCP/IP entry whose name mentions DUN, PPPoE, VPN, or AOL. If the word TCP/IP appears by itself, select that line. Click the **Properties** button.
3. Click the **IP Address** tab. Select **Obtain an IP address automatically**. (See Figure 5-2.)
4. Now click the **Gateway** tab, and verify that the *Installed Gateway* field is blank. Click the **OK** button.
5. Click the **OK** button again. Windows may ask you for the original Windows installation disk or additional files. Check for the files at c:\windows\options\cabs, or insert your Windows CD-ROM into your CD-ROM drive and check the correct file location, e.g., D:\win98, D:\win9x, etc. (if "D" is the letter of your CD-ROM drive).
6. Windows may ask you to restart your PC. Click the **Yes** button. If Windows does not ask you to restart, restart your computer anyway.

Go to "Chapter 6: Configuring the Wireless-G Broadband Router."



**IMPORTANT:** Important: By default Windows 98SE, 2000, Me, and XP has TCP/IP installed and set to obtain an IP address automatically. If your PC does not have TCP/IP installed, click **Start** and then **Help**. Search for the keyword TCP/IP. Then follow the instructions to install TCP/IP.



Figure 5-1: Configuration Tab

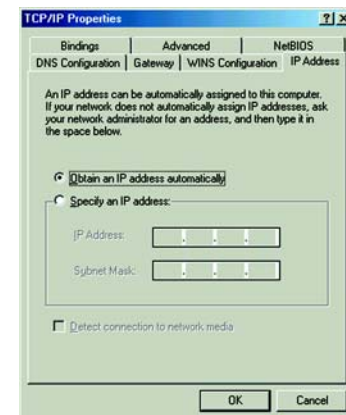


Figure 5-2: IP Address Tab



## Configuring Windows 2000 PCs

1. Click the **Start** button. Select **Settings** and click the **Control Panel** icon. Double-click the **Network and Dial-up Connections** icon.
2. Select the **Local Area Connection** icon for the applicable Ethernet adapter (usually it is the first Local Area Connection listed). Double-click the **Local Area Connection**. Click the **Properties** button. (See Figure 5-3.)
3. Make sure the box next to *Internet Protocol (TCP/IP)* is checked. Highlight **Internet Protocol (TCP/IP)**, and click the **Properties** button. (See Figure 5-4.)
4. Select **Obtain an IP address automatically**. Once the new window appears, click the **OK** button. Click the **OK** button again to complete the PC configuration. (See Figure 5-5.)
5. Restart your computer.

Go to “Chapter 6: Configuring the Wireless-G Broadband Router.”

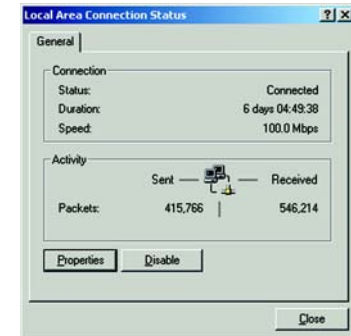


Figure 5-3: Properties



Figure 5-4: TCP/IP



Figure 5-5: IP Address

## Configuring Windows XP PCs

The following instructions assume you are running Windows XP with the default interface. If you are using the Classic interface (where the icons and menus look like previous Windows versions), follow the instructions for Windows 2000.

1. Click the **Start** button and then the **Control Panel** icon. Click the **Network and Internet Connections** icon. Then click the **Network Connections** icon.
2. Select the **Local Area Connection** icon for the applicable Ethernet adapter (usually it is the first Local Area Connection listed). Double-click the **Local Area Connection**. Click the **Properties** button. (See Figure 5-6.)
3. Make sure the box next to *Internet Protocol (TCP/IP)* is checked. Highlight **Internet Protocol (TCP/IP)**, and click the **Properties** button. (See Figure 5-7.)
4. Select **Obtain an IP address automatically**. (See Figure 5-8.) Once the new window appears, click the **OK** button. Click the **OK** button again to complete the PC configuration.

Go to “Chapter 6: Configuring the Wireless-G Broadband Router.”



Figure 5-6: Properties

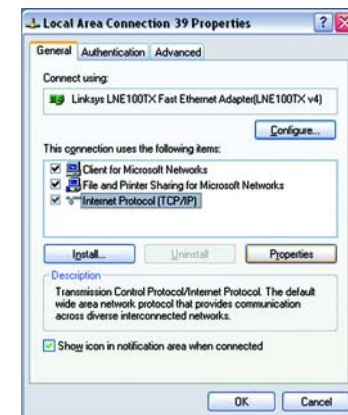


Figure 5-7: TCP/IP



Figure 5-8: IP Address

# Chapter 6: Configuring the Wireless-G Broadband Router

## Overview

You can use the Web-based Utility to configure the Router. For advanced users, you may configure the Router's advanced settings through the Web-based Utility. This chapter will describe each web page in the Utility and each page's key functions. The utility can be accessed via your web browser through the use of a computer connected to the Router.

There are six main tabs: Setup, Wireless, Security, Applications & Gaming, Administration, and Status. Additional tabs will be available after you click one of the main tabs.

For a basic network setup, most users will use these two screens of the Utility:

- **Basic Setup.** On the *Basic Setup* screen, enter the settings provided by your ISP.
- **Management.** Click the **Administration** tab and then the **Management** tab. The Router's default password is **admin**. To secure the Router, change the Password from its default.

To access the Web-based Utility, launch Internet Explorer or Netscape Navigator, and enter the Router's default IP address, **192.168.1.1**, in the *Address* field. Then press **Enter**.

A password request page will appear. (Non-Windows XP users will see a similar screen.) Leave the *User Name* field blank. The first time you open the Web-based Utility, use the default password **admin**. (You can set a new password from the Administration tab's *Management* screen.) Then click the **OK** button.



**NOTE:** For first-time installation, Linksys recommends that you use the Setup Wizard on the Setup CD-ROM. If you want to configure advanced settings, use this chapter to learn about the Web-based Utility.



**HAVE YOU:** Enabled TCP/IP on your PCs? PCs communicate over the network with this protocol. Refer to "Appendix D: Windows Help" for more information on TCP/IP.



**Figure 6-1: Password Screen**

## The Setup Tab - Basic Setup

The first screen that appears displays the Setup tab. This allows you to change the Broadband Router's general settings. Change these settings as described here and click the **Save Settings** button to apply your changes or **Cancel Changes** to cancel your changes.

### Internet Setup

The Internet Setup section configures the Broadband Router to your Internet connection. Most of this information can be obtained through your ISP.

### Internet Connection Type

Choose the type of Internet connection your ISP provides from the drop down menu.

- **DHCP.** By default, the Router's Internet Connection Type is set to **Obtain an IP Automatically**, which should be kept only if your ISP supports DHCP or you are connecting through a dynamic IP address.
- **Static IP.** If you are required to use a permanent IP address to connect to the Internet, select **Static IP**.

**Internet IP Address.** This is the Router's IP address, when seen from the Internet. Your ISP will provide you with the IP Address you need to specify here.

**Subnet Mask.** This is the Router's Subnet Mask, as seen by users on the Internet (including your ISP). Your ISP will provide you with the Subnet Mask.

**Gateway.** Your ISP will provide you with the Gateway Address, which is the ISP server's IP address.

**DNS.** Your ISP will provide you with at least one DNS (Domain Name System) Server IP Address.

Figure 6-2: Setup Tab - Basic Setup

Figure 6-3: DHCP Connection Type

Figure 6-4: Static IP Connection Type

**Static IP address:** a fixed address assigned to a computer or device connected to a network.

- **PPPoE.** Some DSL-based ISPs use PPPoE (Point-to-Point Protocol over Ethernet) to establish Internet connections. If you are connected to the Internet through a DSL line, check with your ISP to see if they use PPPoE. If they do, you will have to enable **PPPoE**.

**User Name and Password.** Enter the User Name and Password provided by your ISP.

**Connect on Demand: Max Idle Time.** You can configure the Router to cut the Internet connection after it has been inactive for a specified period of time (Max Idle Time). If your Internet connection has been terminated due to inactivity, Connect on Demand enables the Router to automatically re-establish your connection as soon as you attempt to access the Internet again. If you wish to activate Connect on Demand, click the radio button. In the *Max Idle Time* field, enter the number of minutes you want to have elapsed before your Internet connection terminates.

**Keep Alive Option: Redial Period.** If you select this option, the Router will periodically check your Internet connection. If you are disconnected, then the Router will automatically re-establish your connection. To use this option, click the radio button next to *Keep Alive*. In the *Redial Period* field, you specify how often you want the Router to check the Internet connection. The default Redial Period is 30 seconds.

- **PPTP.** Point-to-Point Tunneling Protocol (**PPTP**) is a service that applies to connections in Europe only.

**Specify Internet IP Address.** This is the Router's IP address, as seen from the Internet. Your ISP will provide you with the IP Address you need to specify here.

**Subnet Mask.** This is the Router's Subnet Mask, as seen by users on the Internet (including your ISP). Your ISP will provide you with the Subnet Mask.

**Gateway.** Your ISP will provide you with the Gateway Address.

**User Name and Password.** Enter the User Name and Password provided by your ISP.

**Connect on Demand: Max Idle Time.** You can configure the Router to cut the Internet connection after it has been inactive for a specified period of time (Max Idle Time). If your Internet connection has been terminated due to inactivity, Connect on Demand enables the Router to automatically re-establish your connection as soon as you attempt to access the Internet again. If you wish to activate Connect on Demand, click the radio button. In the *Max Idle Time* field, enter the number of minutes you want to have elapsed before your Internet connection terminates.

**Keep Alive Option: Redial Period.** If you select this option, the Router will periodically check your Internet connection. If you are disconnected, then the Router will automatically re-establish your connection. To use this option, click the radio button next to *Keep Alive*. In the *Redial Period* field, you specify how often you want the Router to check the Internet connection. The default Redial Period is 30 seconds.

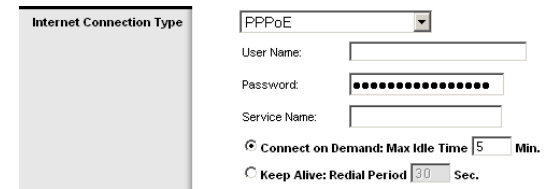


Figure 6-5: PPPoE Connection Type

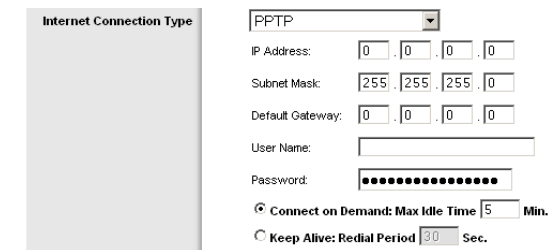


Figure 6-6: PPTP Connection Type

- **HeartBeat Signal.** HeartBeat Signal (HBS) is a service that applies to connections in Australia only.

**User Name and Password.** Enter the User Name and Password provided by your ISP.

**Heart Beat Server.** This is the IP address that the Router has, when seen from the Internet. Your ISP will provide you with the IP Address you need to specify here.

**Connect on Demand: Max Idle Time.** You can configure the Router to cut the Internet connection after it has been inactive for a specified period of time (Max Idle Time). If your Internet connection has been terminated due to inactivity, Connect on Demand enables the Router to automatically re-establish your connection as soon as you attempt to access the Internet again. If you wish to activate Connect on Demand, click the radio button. In the *Max Idle Time* field, enter the number of minutes you want to have elapsed before your Internet connection terminates.

**Keep Alive Option: Redial Period.** If you select this option, the Router will periodically check your Internet connection. If you are disconnected, then the Router will automatically re-establish your connection. To use this option, click the radio button next to *Keep Alive*. In the *Redial Period* field, you specify how often you want the Router to check the Internet connection. The default Redial Period is 30 seconds.

### Optional Settings

Some of these settings may be required by your ISP. Verify with your ISP before making any changes.

**Router Name.** In this field, you can type a name of up to 39 characters to represent the Router.

**Host Name/Domain Name.** These fields allow you to supply a host and domain name for the Router. Some ISPs, usually cable ISPs, require these names as identification. You may have to check with your ISP to see if your broadband Internet service has been configured with a host and domain name. In most cases, leaving these fields blank will work.

**MTU.** MTU is the Maximum Transmission Unit. It specifies the largest packet size permitted for Internet transmission. The default setting, **Manual**, allows you to enter the largest packet size that will be transmitted. The recommended size, entered in the *Size* field, is 1492. You should leave this value in the 1200 to 1500 range. To have the Router select the best MTU for your Internet connection, select **Auto**.

### Network Setup

The Network Setup section changes the settings on the network connected to the Router's Ethernet ports. Wireless Setup is performed through the Wireless tab.

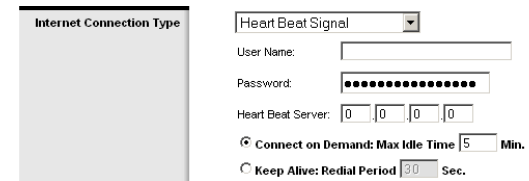


Figure 6-7: HeartBeat Signal Connection Type



Figure 6-8: Optional Settings

## Router IP

This presents both the Router's IP Address and Subnet Mask as seen by your network.

## Network Address Server Settings (DHCP)

The settings allow you to configure the Router's Dynamic Host Configuration Protocol (DHCP) server function. The Router can be used as a DHCP server for your network. A DHCP server automatically assigns an IP address to each computer on your network. If you choose to enable the Router's DHCP server option, you must configure all of your network PCs to connect to a DHCP server (the Router), and make sure there is no other DHCP server on your network.

**DHCP Server.** DHCP is enabled by factory default. If you already have a DHCP server on your network, or you don't want a DHCP server, then click the **Disable** radio button (no other DHCP features will be available).

**Starting IP Address.** Enter a value for the DHCP server to start with when issuing IP addresses. Because the Router's default IP address is 192.168.1.1, the Starting IP Address must be 192.168.1.2 or greater, but smaller than 192.168.1.253. The default Starting IP Address is **192.168.1.100**.

**Maximum Number of DHCP Users.** Enter the maximum number of PCs that you want the DHCP server to assign IP addresses to. This number cannot be greater than 253. The default is 50.

**Client Lease Time.** The Client Lease Time is the amount of time a network user will be allowed connection to the Router with their current dynamic IP address. Enter the amount of time, in minutes, that the user will be "leased" this dynamic IP address. After the time is up, the user will be automatically assigned a new dynamic IP address. The default is 0 minutes, which means one day.

**Static DNS (1-3).** The Domain Name System (DNS) is how the Internet translates domain or website names into Internet addresses or URLs. Your ISP will provide you with at least one DNS Server IP Address. If you wish to use another, type that IP Address in one of these fields. You can type up to three DNS Server IP Addresses here. The Router will use these for quicker access to functioning DNS servers.

**WINS.** The Windows Internet Naming Service (WINS) converts NetBIOS names to IP addresses. If you use a WINS server, enter that server's IP Address here. Otherwise, leave this blank.

## Time Setting

Change the time zone in which your network functions from this pull-down menu. (You can even automatically adjust for daylight savings time.)

Router IP

Local IP Address: 192 . 168 . 1 . 1

Subnet Mask: 255 . 255 . 255 . 0

**Figure 6-9: Router IP**

Network Address Server Settings (DHCP)

Local DHCP Server:  Enable  Disable

Start IP Address: 192.168.1.100

Number of Address: 50

DHCP Address Range: 192.168.1.100 to 192.168.1.149

Client Lease Time: 0 minutes (0 means one day)

DNS 1: 0 . 0 . 0 . 0

DNS 2: 0 . 0 . 0 . 0

DNS 3: 0 . 0 . 0 . 0

WINS: 0 . 0 . 0 . 0

**Figure 6-10: Network Address Server Settings**

Time Setting

Time Zone: (GMT-08:00) Pacific Time(USA & Canada)

**Figure 6-11: Time Setting**

## The Setup Tab - DDNS

The Router offers a Dynamic Domain Name System (DDNS) feature. DDNS lets you assign a fixed host and domain name to a dynamic Internet IP address. It is useful when you are hosting your own website, FTP server, or other server behind the Router. Before you can use this feature, you need to sign up for DDNS service at [www.dyndns.org](http://www.dyndns.org) or [www.TZO.com](http://www.TZO.com), DDNS service providers.

### DDNS

**DDNS Service.** If your DDNS service is provided by DynDNS.org, then select **DynDNS.org** in the drop-down menu. If your DDNS service is provided by TZO, then select **TZO.com**. The features available on the DDNS screen will vary, depending on which DDNS service provider you use.

#### DynDNS.org

**User Name.** Enter the User Name for your DDNS account

**Password.** Enter the Password for your DDNS account.

**Host Name.** This is the DDNS URL assigned by the DDNS service.

**Internet IP Address.** This is the Router's current IP Address as seen on the Internet.

**Status.** This displays the status of the DDNS connection.

#### TZO.com

**Email Address.** Enter the Email Address of the service you set up with TZO.

**Password.** Enter the TZO Password Key of the service you set up with TZO.

**Domain Name.** Enter the Domain Name of the service you set up with TZO.

**Internet IP Address.** The Router's current Internet IP Address is displayed here. Because it is dynamic, this will change.

**Status.** The status of the DDNS service connection is displayed here.

Change these settings as described here and click the **Update** button to apply your changes or **Cancel Changes** to cancel your changes.

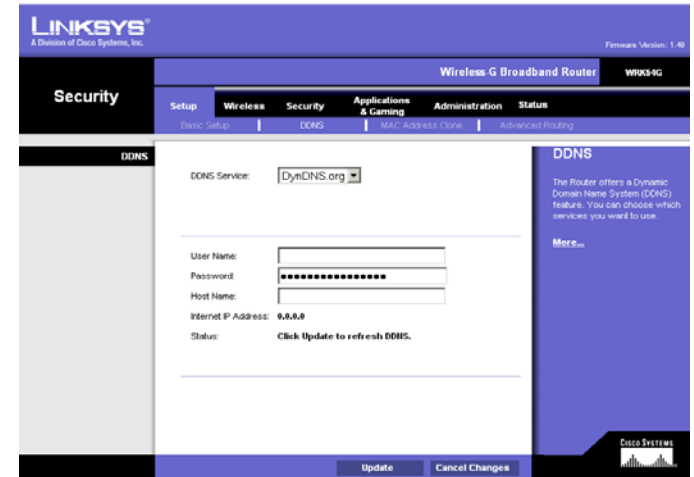


Figure 6-12: Setup Tab - DDNS

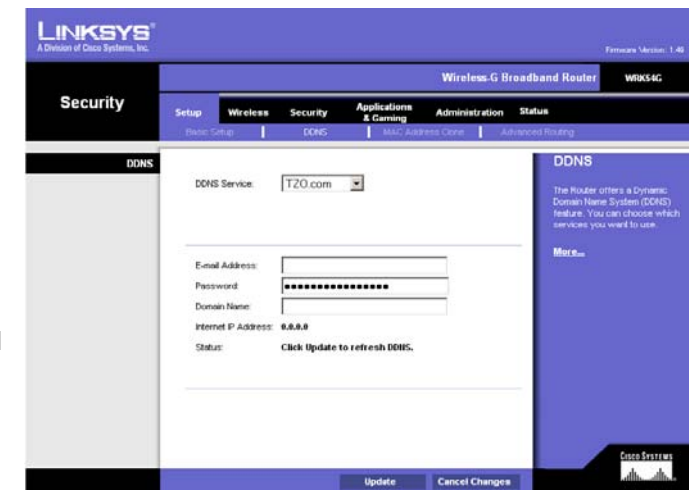


Figure 6-13: Setup Tab - TZO



## The Setup Tab - MAC Address Clone

A MAC address is a 12-digit code assigned to a unique piece of hardware for identification. Some ISPs will require you to register a MAC address in order to access the Internet. If you do not wish to re-register the MAC address with your ISP, you may assign the MAC address you have currently registered with your ISP to the Router with the MAC Address Clone feature.

**Enable/Disable.** To have the MAC Address cloned, click the radio button beside *Enable*.

**User Defined Entry.** Enter the MAC Address registered with your ISP here.

**Clone Your PC's MAC Address.** Clicking this button will clone the MAC address.

Change these settings as described here and click the **Save Settings** button to apply your changes or **Cancel Changes** to cancel your changes.

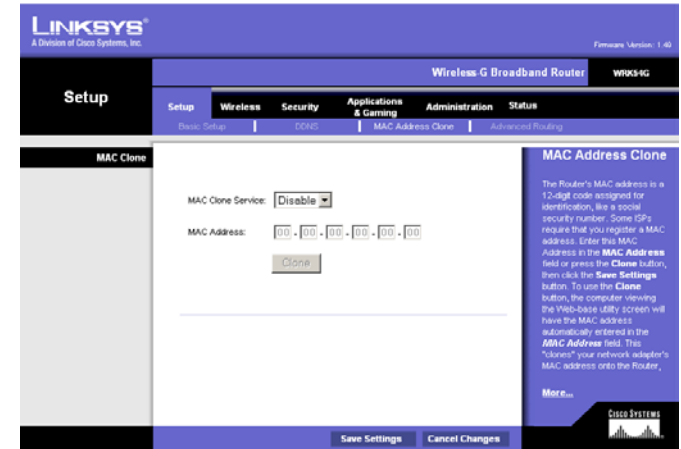


Figure 6-14: Setup Tab - MAC Address Clone

## The Setup Tab - Advanced Routing

This tab is used to set up the Router's advanced functions. NAT allows multiple users to share one Internet connection. Dynamic Routing will automatically adjust how packets travel on your network. Static Routing sets up a fixed route to another network destination.

**NAT.** If this Router is hosting your network's connection to the Internet, select **Enable**. If another Router exists on your network, select **Disable**. When Router is chosen, **Dynamic Routing** will be enabled.

**Dynamic Routing.** This feature enables the Router to automatically adjust to physical changes in the network's layout and exchange routing tables with the other router(s). The Router determines the network packets' route based on the fewest number of hops between the source and the destination. This feature is **Disabled** by default. From the drop-down menu, you can also select **LAN & Wireless**, which performs dynamic routing over your Ethernet and wireless networks. You can also select **Internet**, which performs dynamic routing with data coming from the Internet. Finally, selecting **Both** enables dynamic routing for both networks, as well as data from the Internet.

**Static Routing.** To set up a static route between the Router and another network, select a number from the *Static Routing* drop-down list. (A static route is a pre-determined pathway that network information must travel to reach a specific host or network.) Enter the information described below to set up a new static route. (Click the **Delete This Entry** button to delete a static route.)

**Enter Route Name.** Enter a name for the Route here, using a maximum of 25 alphanumeric characters.

**Destination LAN IP.** The Destination LAN IP is the address of the remote network or host to which you want to assign a static route.

**Subnet Mask.** The Subnet Mask determines which portion of a Destination LAN IP address is the network portion, and which portion is the host portion.

**Default Gateway.** This is the IP address of the gateway device that allows for contact between the Router and the remote network or host.

**Interface.** This interface tells you whether the Destination IP Address is on the **LAN & Wireless** (Ethernet and wireless networks), the **WAN** (Internet), or **Loopback** (a dummy network in which one PC acts like a network—necessary for certain software programs).

Click the **Show Routing Table** button to view the Static Routes you've already set up.

Change these settings as described here and click the **Save Settings** button to apply your changes or **Cancel Changes** to cancel your changes.



Figure 6-15: Setup Tab - Advanced Routing

Destination LAN IP	Subnet Mask	Default Gateway	Hop Count	Interface
192.168.1.0	255.255.255.0	0.0.0.0	1	LAN

Figure 6-16: Setup Tab - Routing Table

## The Wireless Tab - Basic Wireless Settings

The basic settings for wireless networking are set on this screen.

**Wireless Network Mode.** From this drop-down menu, you can select the wireless standards running on your network. If you have both 802.11g and 802.11b devices in your network, keep the default setting, **Mixed**. If you have only 802.11g devices, select **G-Only**. If you have only 802.11b devices, select **B-Only**. If you do not have any 802.11g and 802.11b devices in your network, select **Disable**.

**Wireless Network Name (SSID).** The SSID is the network name shared among all points in a wireless network. The SSID must be identical for all devices in the wireless network. It is case-sensitive and must not exceed 32 characters (use any of the characters on the keyboard). Make sure this setting is the same for all points in your wireless network. For added security, you should change the default SSID (**linksys**) to a unique name.

**Wireless Channel.** Select the appropriate channel from the list provided to correspond with your network settings. All devices in your wireless network must be broadcast on the same channel in order to function correctly.

**Wireless SSID Broadcast.** When wireless clients survey the local area for wireless networks to associate with, they will detect the SSID broadcast by the Router. To broadcast the Router's SSID, keep the default setting, **Enable**. If you do not want to broadcast the Router's SSID, then select **Disable**.

Change these settings as described here and click the **Save Settings** button to apply your changes or **Cancel Changes** to cancel your changes.



Figure 6-17: Wireless Tab - Basic Wireless

## The Wireless Tab - Wireless Security

The Wireless Security settings configure the security of your wireless network. There are three wireless security mode options supported by the Router: WPA Pre-Shared Key, WPA RADIUS, and WEP. (WPA stands for Wi-Fi Protected Access, which is a security standard stronger than WEP encryption. WEP stands for Wired Equivalent Privacy, while RADIUS stands for Remote Authentication Dial-In User Service.) These three are briefly discussed here. For detailed instructions on configuring wireless security for the Router, turn to “Appendix B: Wireless Security.”

**WPA Pre-Shared Key.** WPA gives you one encryption method, TKIP, with dynamic encryption keys. Select the type of algorithm, **TKIP**. Enter a WPA Shared Key of 8-32 characters. Then enter a Group Key Renewal period, which instructs the Router how often it should change the encryption keys.

**WPA RADIUS.** This option features WPA used in coordination with a RADIUS server. (This should only be used when a RADIUS server is connected to the Router.) First, select the type of WPA algorithm you want to use, **TKIP**. Enter the RADIUS server’s IP Address and port number, along with a key shared between the Router and the server. Last, enter a Key Renewal Timeout, which instructs the Router how often it should change the encryption keys.



**IMPORTANT:** If you are using WPA, always remember that each device in your wireless network **MUST** use the same WPA method and shared key, or else the network will not function properly.

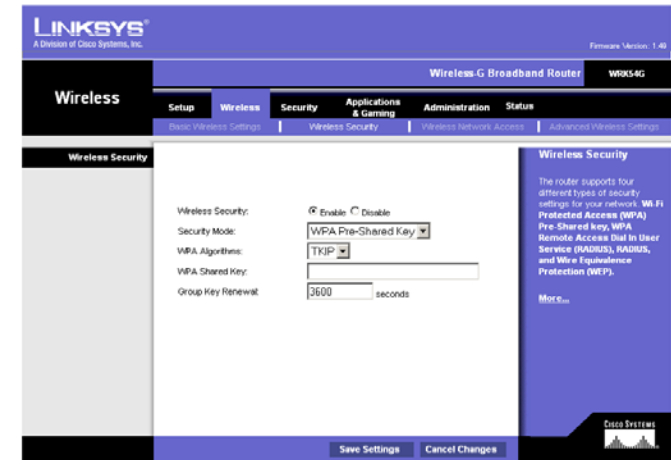


Figure 6-18: Wireless Tab - Wireless Security (WPA Pre-Shared Key)

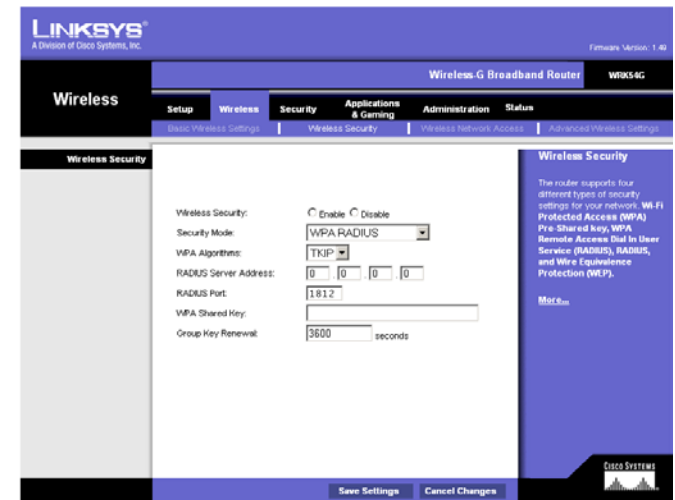


Figure 6-19: Wireless Tab - Wireless Security (WPA RADIUS)

## Wireless-G Broadband Router

**WEP.** WEP is a basic encryption method, which is not as secure as WPA. To use WEP, select a Default Transmit Key (choose which Key to use), and a level of WEP encryption, **64 bits 10 hex digits** or **128 bits 26 hex digits**. Then either generate a WEP key using a Passphrase or enter the WEP key manually.

Change these settings as described here and click the **Save Settings** button to apply your changes or **Cancel Changes** to cancel your changes. For detailed instructions on configuring wireless security for the Router, turn to “Appendix B: Wireless Security.”



**IMPORTANT:** If you are using WEP encryption, always remember that each device in your wireless network **MUST** use the same WEP encryption method and encryption key, or else your wireless network will not function properly.

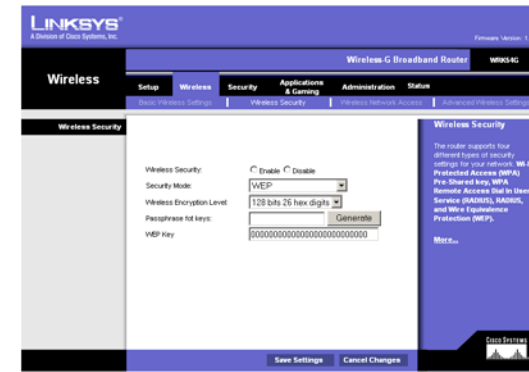


Figure 6-20: Wireless Tab - Wireless Security (WEP)

## The Wireless Tab - Wireless Network Access

Wireless access can be filtered by using the MAC addresses of the wireless devices transmitting within your network's radius.

**MAC Filter.** To filter wireless users by MAC Address, either permitting or blocking access, click **Enable**. If you do not wish to filter users by MAC Address, select **Disable**.

**Deny.** Clicking this button will block the wireless access by MAC Address.

**Allow.** Clicking this button will allow the wireless access by MAC Address.

**Select MAC Address from Networked Computers.** Clicking this button will open the Wireless Client MAC List. On this screen, you can view users, by MAC Address, to whom you wish to provide or block access.

Change these settings as described here and click the **Save Settings** button to apply your changes or **Cancel Changes** to cancel your changes.

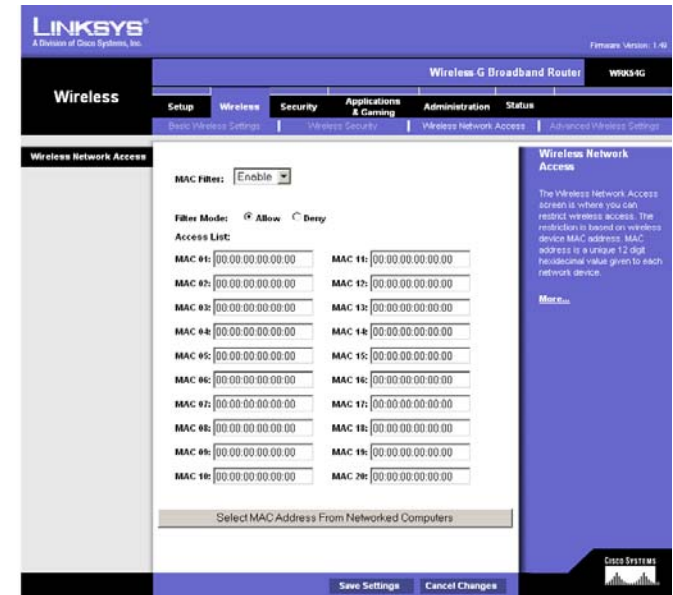


Figure 6-21: Wireless Tab - Wireless Network Access



Figure 6-22: Wireless Client MAC List

## The Wireless Tab - Advanced Wireless Settings

This tab is used to set up the Router's advanced wireless functions. These settings should only be adjusted by an expert administrator as incorrect settings can reduce wireless performance.

**Basic Rate.** The Basic Rate setting is not actually one rate of transmission but a series of rates at which the Router can transmit. The Router will advertise its Basic Rate to the other wireless devices in your network, so they know which rates will be used. The Router will also advertise that it will automatically select the best rate for transmission. The default setting is **Default**, when the Router can transmit at all standard wireless rates (1-2Mbps, 5.5Mbps, 11Mbps, 18Mbps, and 24Mbps). Other options are **1-2Mbps**, for use with older wireless technology, and **All**, when the Router can transmit at all wireless rates. The Basic Rate is not the actual rate of data transmission. If you want to specify the Router's rate of data transmission, configure the Transmission Rate setting.

**Control Tx Rate.** The rate of data transmission should be set depending on the speed of your wireless network. You can select from a range of transmission speeds, or you can select **Auto** to have the Router automatically use the fastest possible data rate and enable the Auto-Fallback feature. Auto-Fallback will negotiate the best possible connection speed between the Router and a wireless client. The default value is **Auto**.

**Preamble Type.** The preamble defines the length of the CRC block for communication between the Router and the roaming Network Card. (High network traffic areas should use the shorter preamble type.) Select the appropriate preamble type, **Long Preamble(default)** or **Short Preamble**.

**Authentication Type.** The default is set to **Auto**, which allows either Open System or Shared Key authentication to be used. With **Open System** authentication, the sender and the recipient do NOT use a WEP key for authentication. With **Shared Key** authentication, the sender and recipient use a WEP key for authentication.

**Beacon Interval.** The default value is **100**. Enter a value between 1 and 65,535 milliseconds. The Beacon Interval value indicates the frequency interval of the beacon. A beacon is a packet broadcast by the Router to synchronize the wireless network.

**DTIM Interval.** This value, between 1 and 255, indicates the interval of the Delivery Traffic Indication Message (DTIM). A DTIM field is a countdown field informing clients of the next window for listening to broadcast and multicast messages. When the Router has buffered broadcast or multicast messages for associated clients, it sends the next DTIM with a DTIM Interval value. Its clients hear the beacons and awaken to receive the broadcast and multicast messages. The default value is **1**.

**Fragmentation Threshold.** This value specifies the maximum size for a packet before data is fragmented into multiple packets. If you experience a high packet error rate, you may slightly increase the Fragmentation Threshold. Setting the Fragmentation Threshold too low may result in poor network performance. Only minor reduction of the default value is recommended. In most cases, it should remain at its default value of **2346**.

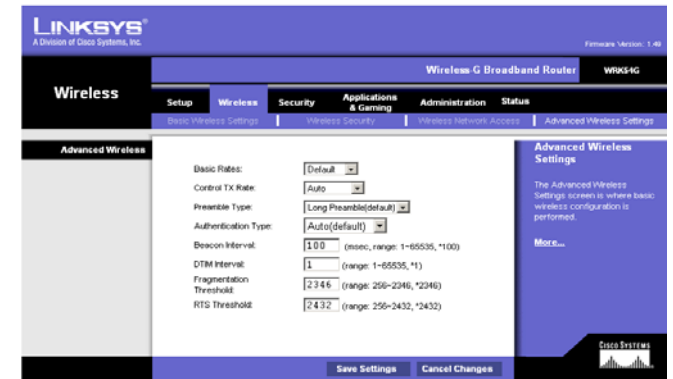


Figure 6-23: Wireless Tab - Advanced Wireless Settings

**RTS Threshold.** Should you encounter inconsistent data flow, only minor reduction of the default value, **2432**, is recommended. If a network packet is smaller than the preset RTS threshold size, the RTS/CTS mechanism will not be enabled. The Router sends Request to Send (RTS) frames to a particular receiving station and negotiates the sending of a data frame. After receiving an RTS, the wireless station responds with a Clear to Send (CTS) frame to acknowledge the right to begin transmission. The RTS Threshold value should remain at its default value of **2432**.

Change these settings as described here and click the **Save Settings** button to apply your changes or **Cancel Changes** to cancel your changes.



## The Security Tab - Filter

Filters block specific internal users from accessing the Internet. From the Filters tab, you can set up a filter through an IP address or a network port number.

**Filter IP Address Range.** To set up a filter using IP addresses, enter the range of IP addresses you wish to filter in the IP address fields. Users who have filtered IP addresses will not be able to access the Internet at all. If you only want to filter one IP address instead of a range of IP addresses, enter the same value into both fields. For instance, if you wish to filter the PC with the IP address of 192.168.1.5, enter 5 into both fields on one line: 192.168.1.5 ~ 192.168.1.5.

**Filter Port Range.** To filter users by network port number, select a protocol, then enter a network port number or a range of network ports. Enter the port numbers you want to filter in the port numbers fields. Users connected to the Router will no longer be able to access any port number listed there.

**Filter MAC Address.** This feature filters the Ethernet adapter's specific MAC address from going out to the Internet. To check your Ethernet adapter's MAC address, you can run `wiwinpcfg` or `ipconfig` in the command prompt, depending on which Windows operating system you are using. To set the MAC filter, click the **Edit MAC Filter Setting** button. When the screen appears, select the range in the drop-down menu, and in a MAC number field, enter the 12-digit MAC address you want to filter. Click **Apply** to save the changes, or **Undo** to undo the changes. For information on obtaining a MAC address, go to Appendix E: Finding the MAC Address and IP Address for Your Ethernet Adapter.

**Block WAN Requests.** Enable the Block WAN Request feature by checking the radio button beside **Block Anonymous Internet Requests** and you can prevent your network from being pinged or detected by other Internet users. Click **Disabled** if you want to allow anonymous Internet requests. The Block WAN Request feature also reinforces your network security by hiding your network ports. Both functions of the Block WAN Request feature make it more difficult for outside users to work their way into your network. This feature is enabled by default.

**Filter Multicast.** This feature allows for multiple transmissions to specific recipients at the same time. Select **Enabled** to support the feature, or **Disabled** to keep the Router from multicasting.

**Filter Internet NAT Redirection.** This feature uses Port Forwarding to prevent access to local servers from your local networked computers.

Change these settings as described here and click the **Save Settings** button to apply your changes or **Cancel Changes** to cancel your changes.

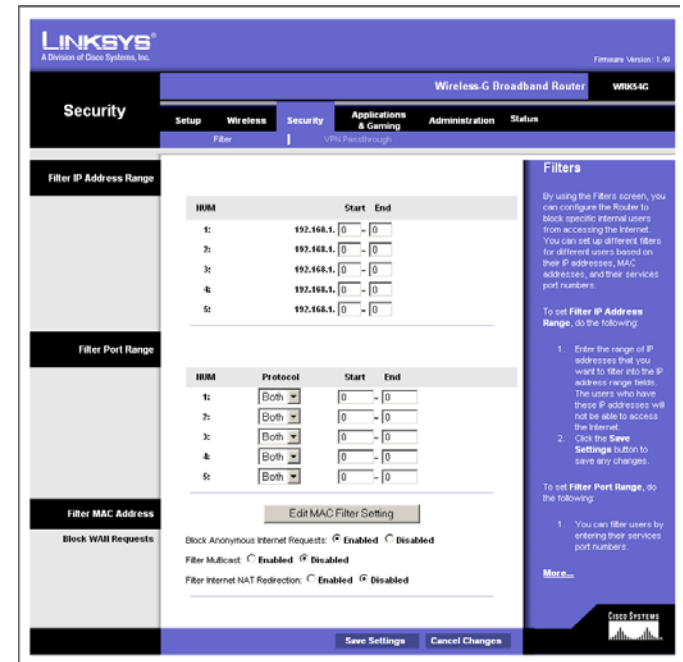


Figure 6-24: Security Tab - Filter

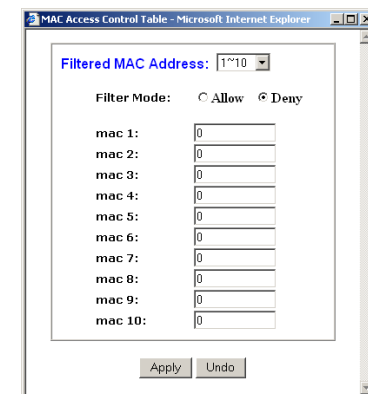


Figure 6-25: List of PCs

## The Security Tab - VPN Passthrough

Use the settings on this tab to allow VPN tunnels in either IPSec or PPTP protocols to pass through the Router's firewall.

**IPSec Passthrough.** Internet Protocol Security (IPSec) is a suite of protocols used to implement secure exchange of packets at the IP layer. To allow IPSec tunnels to pass through the Router, click the radio button beside **Enabled**. IPSec Passthrough is enabled by default. Click **Disabled** to disable the function.

**PPPoE Passthrough.** Point-to-Point Protocol over Ethernet allows your PC(s) to use the PPPoE client software provided by your ISP. Some ISPs may request that you use this feature. To allow PPPoE Passthrough, click the radio button beside **Enabled**. PPPoE Passthrough is enabled by default. Click **Disabled** to disable the function.

**PPTP Passthrough.** Point-to-Point Tunneling Protocol is the method used to enable VPN sessions to a Windows NT 4.0 or 2000 server. To allow PPTP tunnels to pass through the Router, click the radio button beside **Enabled**. PPTP Passthrough is enabled by default. Click **Disabled** to disable the function.

Change these settings as described here and click the **Save Settings** button to apply your changes or **Cancel Changes** to cancel your changes.

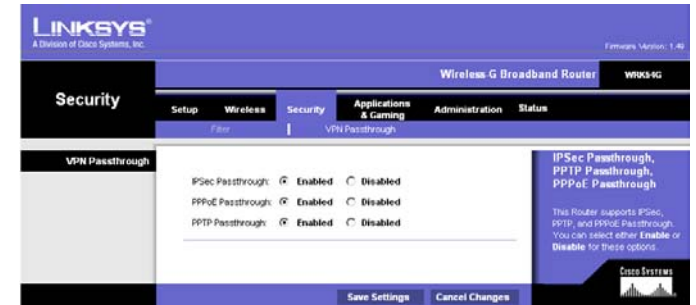


Figure 6-26: Security Tab - VPN Passthrough

## The Applications and Gaming Tab - Port Range Forwarding

The Applications and Gaming Tab allows you to set up public services on your network, such as web servers, ftp servers, e-mail servers, or other specialized Internet applications. (Specialized Internet applications are any applications that use Internet access to perform functions such as videoconferencing or online gaming. Some Internet applications may not require any forwarding.)

To forward a port, enter the information on each line for the criteria required. Descriptions of each criteria are described here.

**Application.** In this field, enter the name you wish to give the application. Each name can be up to 12 characters.

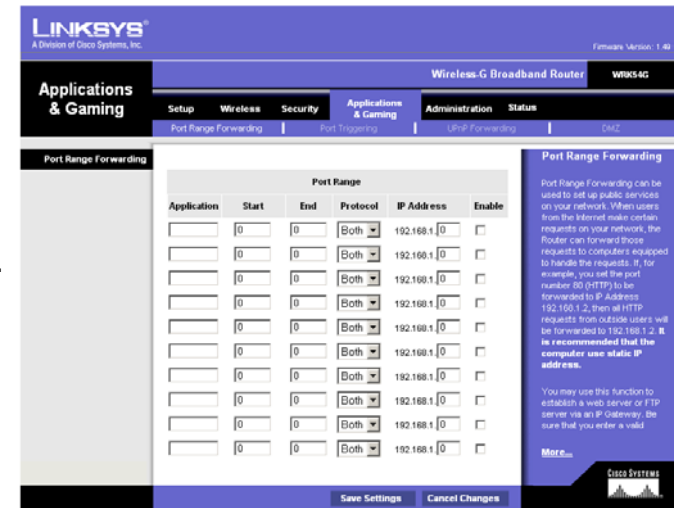
**Start/End.** This is the port range. Enter the number that starts the port range under **Start** and the number that ends the range under **End**.

**Protocol.** Enter the protocol used for this application, either **TCP** or **UDP**, or **Both**.

**IP Address.** For each application, enter the IP Address of the PC running the specific application.

**Enable.** Click the **Enable** checkbox to enable port forwarding for the relevant application.

Change these settings as described here and click the **Save Settings** button to apply your changes or **Cancel Changes** to cancel your changes.



**Figure 6-27: Applications and Gaming Tab - Port Range Forward**

## The Applications and Gaming Tab - Port Triggering

### Port Triggering

Port Triggering is used for special applications that can request a port to be opened on demand. For this feature, the Gateway will watch outgoing data for specific port numbers. The Gateway will remember the IP address of the computer that sends a transmission requesting data, so that when the requested data returns through the Gateway, the data is pulled back to the proper computer by way of IP address and port mapping rules.

**Application.** Enter the name you wish to give each application.

**Start Port and End Port.** Enter the starting and ending Triggered Range numbers and the Forwarded Range numbers of the port you wish to forward.

When finished making your changes on this tab, click the **Save Settings** button to save these changes, or click the **Cancel Changes** button to undo your changes.

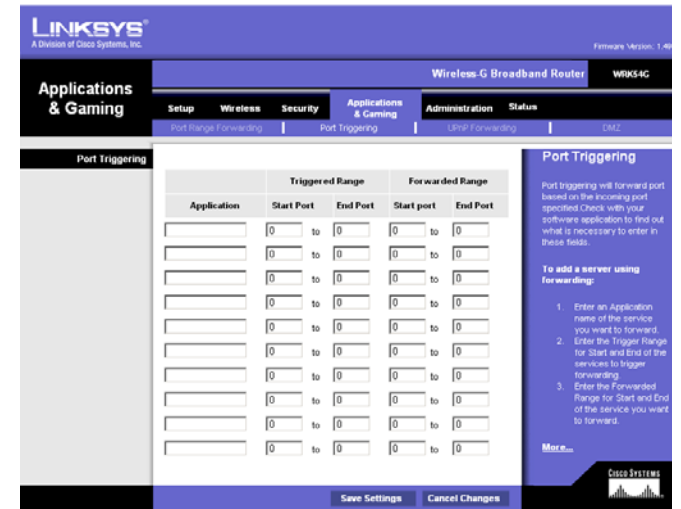


Figure 6-28: Applications and Gaming Tab - Port Triggering

## The Applications and Gaming Tab - UPnP Forwarding

### UPnP Forwarding

The UPnP Forwarding screen provides options for customization of port services for common applications.

When users send this type of request to your network via the Internet, the Gateway will forward those requests to the appropriate computer. Any computer whose port is being forwarded should have its DHCP client function disabled and should have a new static IP address assigned to it because its IP address may change when using the DHCP function.

Choose or enter the Application in the field. Then, enter the External and Internal Port numbers in the fields. Select the type of protocol you wish to use for each application: **TCP** or **UDP**. Enter the IP Address in the field. Click **Enabled** to enable UPnP Forwarding for the chosen application.

When finished making your changes on this tab, click the **Save Settings** button to save these changes, or click the **Cancel Changes** button to undo your changes.

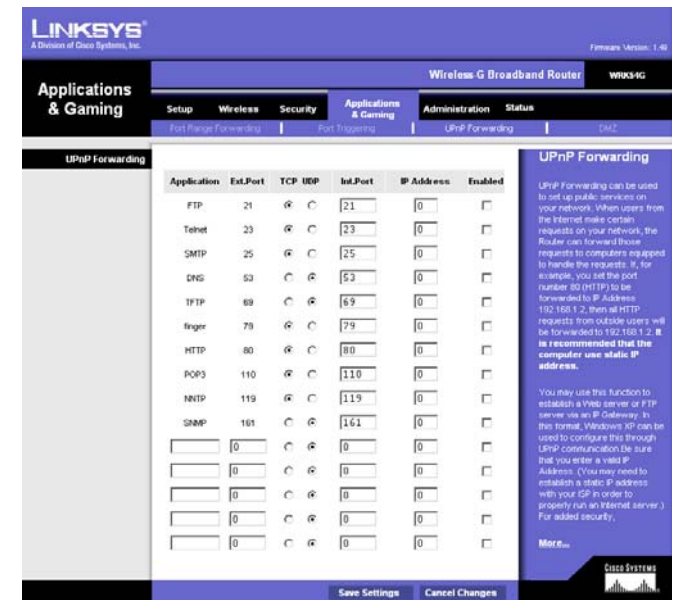


Figure 6-29: Applications and Gaming Tab - UPnP Forwarding

## The Applications and Gaming Tab - DMZ

The DMZ feature allows one network user to be exposed to the Internet for use of a special-purpose service such as Internet gaming or videoconferencing. DMZ hosting forwards all the ports at the same time to one PC. The Port Range Forward feature is more secure because it only opens the ports you want to have opened, while DMZ hosting opens all the ports of one computer, exposing the computer to the Internet.

Any PC whose port is being forwarded must have its DHCP client function disabled and should have a new static IP address assigned to it because its IP address may change when using the DHCP function.

To expose one PC, select **Enable**. Then, enter the computer's IP address in the DMZ Host IP Address field.

Change these settings as described here and click the **Save Settings** button to apply your changes or **Cancel Changes** to cancel your changes.

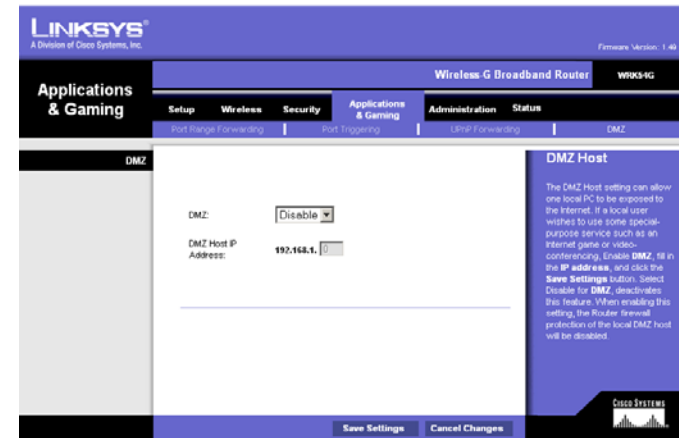


Figure 6-30: Applications and Gaming Tab - DMZ

## The Administration Tab - Management

This section of the Administration tab allows the network's administrator to manage specific Router functions for access and security.

**Local Router Access.** You can change the Router's password from here. Enter a new Router password and then type it again in the Re-enter to confirm field to confirm.



**IMPORTANT:** Enabling remote Administration allows anyone with access to your password to configure the Router from somewhere else on the Internet.

**Remote Router Access.** This feature allows you to access the Router from a remote location, via the Internet. Remote Upgrade allows you to upgrade your firmware from a remote location. To enable Remote Upgrade, select **Enabled**. Remote Administration allows you to manage the Router from a remote location via the Internet. To enable Remote Administration, select **Enabled**. Enter the Administration Port number you will use to remotely access the Router.

**UPnP.** UPnP allows Windows XP to automatically configure the Gateway for various Internet applications, such as gaming and videoconferencing. When using UPnP features, select **Enable**. Because allowing this may present a risk to security, this feature is disabled by default. To allow users to make configuration changes, select **Enabled**. To allow users to disable Internet access, select **Enabled**.

**Backup and Restore.** Click this button to back up or restore your configuration. Click the **Backup** button to back up the configuration. To Restore your configuration, click the **Browse** button to find the file, then click the **Restore** button.

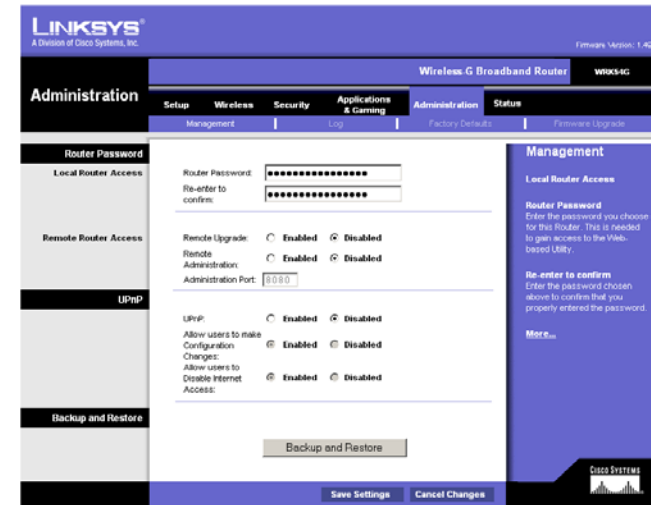


Figure 6-31: Administration Tab - Management

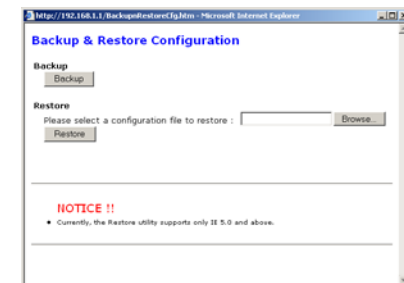


Figure 6-32: Backup and Restore Configuration

## The Administration Tab - Log

The Router can keep logs of all traffic for your Internet connection. To disable the Log function, keep the default setting, **No**. To monitor traffic between the network and the Internet, select **Yes**. Enter the IP Address of the PC where the Logviewer is installed in the *Logviewer IP Address* field.

When you wish to view the logs, click **Incoming Log** or **Outgoing Log**, depending on which you wish to view.

Change these settings as described here and click the **Save Settings** button to apply your changes or **Cancel Changes** to cancel your changes.



Figure 6-33: Administration Tab - Log

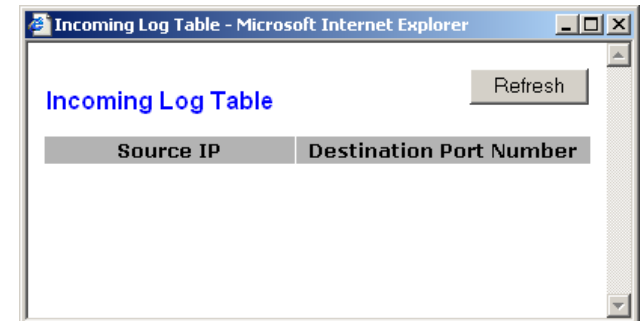


Figure 6-34: Incoming Log Table

## The Administration Tab - Factory Defaults

Click the **Yes** radio button to reset all configuration settings to their default values, and then click the **Save Settings** button. Any settings you have saved will be lost when the default settings are restored. This feature is disabled by default.



Figure 6-35: The Administration Tab - Factory Defaults

## The Administration Tab - Firmware Upgrade

Firmware can be upgraded by clicking the **Upgrade** button after browsing for the firmware, which you can download from the Linksys website, [www.linksys.com/international](http://www.linksys.com/international). Do not upgrade your firmware unless you are experiencing problems with the Broadband Router. For more information about upgrading firmware, refer to “Appendix C: Upgrading Firmware”.

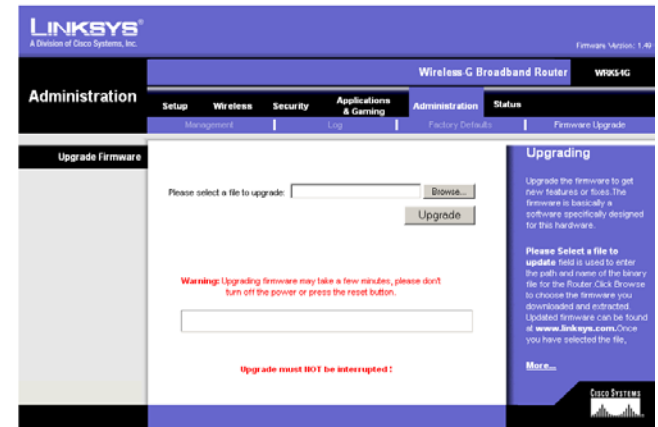


Figure 6-36: Administration Tab - Firmware Upgrade



## The Status Tab - Router

The *Router* screen on the Status Tab displays the Router's current status. The screen will vary depending on the Internet Connection Type selected on the Setup screen.

**Firmware Version.** This is the Router's current firmware.

**Current Time.** The current time and date are displayed here.

**MAC Address.** This is the Router's MAC Address, as seen by your ISP.

**Login Type.** The status of the connection is displayed only for PPPoE, RAS, PPTP, or Heart Beat Signal connections. For these dial-up style connections, there is a Connect button to click if there is no connection and you want to establish an Internet connection, and a Disconnect button to disconnect the Internet connection.

**Internet IP Address.** The Router's Internet IP Address is displayed here.

**Subnet Mask and Default Gateway.** The Router's Subnet Mask and Default Gateway address are displayed here for DHCP and static IP connections.

**Primary DNS and Secondary DNS.** Shown here are the DNS (Domain Name System) IP addresses currently used by the Router.

**DHCP Release.** Available for a DHCP connection, click the **DHCP Release** button to release the current IP address of the device connected to the Router's Internet port.

**DHCP Renew.** Available for a DHCP connection, click the **DHCP Renew** button to replace the current IP address—of the device connected to the Router's Internet port—with a new IP address.



Figure 6-37: Status Tab - Router

## The Status Tab - Local Network

The *Local Network* screen on the Status Tab displays the status of your network.

**MAC Address.** This is the Router's MAC Address, as seen on your local, Ethernet network.

**IP Address.** This shows the Router's IP Address, as it appears on your local, Ethernet network.

**Subnet Mask.** When the Router is using a Subnet Mask, it is shown here.

**DHCP Server.** If you are using the Router as a DHCP server, that will be displayed here.

**DHCP Client Table.** Clicking this button will open a screen to show you which PCs are utilizing the Router as a DHCP server. You can delete PCs from that list and sever their connections by checking a **Delete** box and clicking the **Delete** button.



Figure 6-38: Status Tab - Local Network

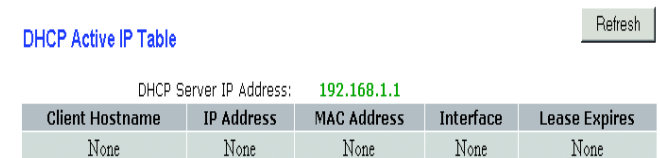


Figure 6-39: DHCP Client Table

## The Status Tab - Wireless

The *Wireless* screen on the Status Tab displays the status of your wireless network.

**MAC Address.** This is the Router's MAC Address, as seen on your local, wireless network.

**Mode.** As selected from the Wireless tab, this will display the wireless mode (Mixed, G-Only, or Disabled) used by the network.

**SSID.** As entered on the Wireless tab, this will display the wireless network name or SSID.

**DHCP Server.** If you are using the Router as a DHCP server, that will be displayed here.

**Channel.** As entered on the Wireless tab, this will display the channel on which your wireless network is broadcasting.

**Encryption Function.** As selected on the Security Tab, this will display what type of encryption the Router uses for security.



Figure 6-40: Status Tab - Wireless

# Appendix A: Troubleshooting

This appendix consists of two parts: “Common Problems and Solutions” and “Frequently Asked Questions.” Provided are possible solutions to problems that may occur during the installation and operation of the Router. Read the descriptions below to help you solve your problems. If you can’t find an answer here, check the Linksys website at [www.linksys.com](http://www.linksys.com).

## Common Problems and Solutions

### **1. I'm trying to access the Router's Web-based Utility, but I do not see the login screen. Instead, I see a screen saying, "404 Forbidden."**

If you are using Windows Explorer, perform the following steps until you see the Web-based Utility's login screen (Netscape Navigator will require similar steps):

1. Click **File**. Make sure *Work Offline* is NOT checked.
2. Press **CTRL + F5**. This is a hard refresh, which will force Windows Explorer to load new webpages, not cached ones.
3. Click **Tools**. Click **Internet Options**. Click the **Security** tab. Click the **Default level** button. Make sure the security level is Medium or lower. Then click the **OK** button.

### **2. I need to set a static IP address on a PC.**

You can assign a static IP address to a PC by performing the following steps:

- For Windows 98SE and Me:
  1. Click **Start**, **Settings**, and **Control Panel**. Double-click **Network**.
  2. In The following network components are installed box, select the TCP/IP-> associated with your Ethernet adapter. If you only have one Ethernet adapter installed, you will only see one TCP/IP line with no association to an Ethernet adapter. Highlight it and click the **Properties** button.
  3. In the TCP/IP properties window, select the **IP address** tab, and select **Specify an IP address**. Enter a unique IP address that is not used by any other computer on the network connected to the Router. Make sure that each IP address is unique for each PC or network device.
  4. Click the **Gateway** tab, and in the New Gateway prompt, enter **192.168.1.1**, which is the default IP address of the Router. Click the **Add** button to accept the entry.
  5. Click the **DNS** tab, and make sure the DNS Enabled option is selected. Enter the Host and Domain names (e.g., John for Host and home for Domain). Enter the DNS entry provided by your ISP. If your ISP has not provided the DNS IP address, contact your ISP to get that information or go to its website for the information.
  6. Click the **OK** button in the TCP/IP properties window, and click **Close** or the **OK** button for the Network window.
  7. Restart the computer when asked.

- For Windows 2000:
  1. Click **Start**, **Settings**, and **Control Panel**. Double-click **Network and Dial-Up Connections**.
  2. Right-click the Local Area Connection that is associated with the Ethernet adapter you are using, and select the **Properties** option.
  3. In the Components checked are used by this connection box, highlight **Internet Protocol (TCP/IP)**, and click the **Properties** button. Select **Use the following IP address** option.
  4. Enter a unique IP address that is not used by any other computer on the network connected to the Router.
  5. Enter the Subnet Mask, **255.255.255.0**.
  6. Enter the Default Gateway, **192.168.1.1** (Router's default IP address).
  7. Toward the bottom of the window, select **Use the following DNS server addresses**, and enter the Preferred DNS server and Alternative DNS server (provided by your ISP). Contact your ISP or go on its website to find the information.
  8. Click the **OK** button in the Internet Protocol (TCP/IP) Properties window, and click the **OK** button in the Local Area Connection Properties window.
  9. Restart the computer if asked.
- For Windows XP:

The following instructions assume you are running Windows XP with the default interface. If you are using the Classic interface (where the icons and menus look like previous Windows versions), please follow the instructions for Windows 2000.

  1. Click **Start** and **Control Panel**.
  2. Click the **Network and Internet Connections** icon and then the **Network Connections** icon.
  3. Right-click the **Local Area Connection** that is associated with the Ethernet adapter you are using, and select the **Properties** option.
  4. In the This connection uses the following items box, highlight **Internet Protocol (TCP/IP)**. Click the **Properties** button.
  5. Enter a unique IP address that is not used by any other computer on the network connected to the Router.
  6. Enter the Subnet Mask, **255.255.255.0**.
  7. Enter the Default Gateway, **192.168.1.1** (Router's default IP address).
  8. Toward the bottom of the window, select **Use the following DNS server addresses**, and enter the Preferred DNS server and Alternative DNS server (provided by your ISP). Contact your ISP or go on its website to find the information.
  9. Click the **OK** button in the Internet Protocol (TCP/IP) Properties window. Click the **OK** button in the Local Area Connection Properties window.

### **3. I want to test my Internet connection.**

A Check your TCP/IP settings.

For Windows 98SE, Me, 2000, and XP:

## Wireless-G Broadband Router

- Refer to “Chapter 5: Configuring the PCs” for details. Make sure Obtain IP address automatically is selected in the settings.

**B** Open a command prompt.

For Windows 98SE and Me:

- Click **Start** and **Run**. In the Open field, type **command**. Press the **Enter** key or click the **OK** button.

For Windows 2000 and XP:

- Click **Start** and **Run**. In the Open field, type **cmd**. Press the **Enter** key or click the **OK** button. In the command prompt, type **ping 192.168.1.1** and press the **Enter** key.
- If you get a reply, the computer is communicating with the Router.
- If you do NOT get a reply, please check the cable, and make sure Obtain an IP address automatically is selected in the TCP/IP settings for your Ethernet adapter.

**C** In the command prompt, type **ping** followed by your Internet or WAN IP address and press the **Enter** key. The Internet or WAN IP Address can be found on the Status screen of the Router’s web-based utility. For example, if your Internet or WAN IP address is 1.2.3.4, you would enter **ping 1.2.3.4** and press the **Enter** key.

- If you get a reply, the computer is connected to the Router.
- If you do NOT get a reply, try the ping command from a different computer to verify that your original computer is not the cause of the problem.

**D** In the command prompt, type **ping www.yahoo.com** and press the **Enter** key.

- If you get a reply, the computer is connected to the Internet. If you cannot open a webpage, try the ping command from a different computer to verify that your original computer is not the cause of the problem.
- If you do NOT get a reply, there may be a problem with the connection. Try the ping command from a different computer to verify that your original computer is not the cause of the problem.

### **4. I am not getting an IP address on the Internet with my Internet connection.**

- Refer to “Problem #3, I want to test my Internet connection” to verify that you have connectivity.
- If you need to register the MAC address of your Ethernet adapter with your ISP, please see “Appendix E: Finding the MAC address and IP Address for Your Ethernet Adapter.” If you need to clone the MAC address of your Ethernet adapter onto the Router, see the System section of “Chapter 6: Configuring the Wireless-G Broadband Router” for details.
- Make sure you are using the right Internet connection settings. Contact your ISP to see if your Internet connection type is DHCP, Static IP Address, or PPPoE (commonly used by DSL consumers). Please refer to the Setup section of “Chapter 6: Configuring the Wireless-G Broadband Router” for details on Internet connection settings.
- Make sure you have the right cable. Check to see if the Internet column has a solidly lit Link/Act LED.
- Make sure the cable connecting from your cable or DSL modem is connected to the Router’s Internet port. Verify that the Status page of the Router’s web-based utility shows a valid IP address from your ISP.
- Turn off the computer, Router, and cable/DSL modem. Wait 30 seconds, and then turn on the Router, cable/DSL modem, and computer. Check the Status tab of the Router’s web-based utility to see if you get an IP address.

**5. I am not able to access the Setup page of the Router's web-based utility.**

- Refer to “Problem #3, I want to test my Internet connection” to verify that your computer is properly connected to the Router.
- Refer to “Appendix E: Finding the MAC Address and IP address for Your Ethernet Adapter” to verify that your computer has an IP Address, Subnet Mask, Gateway, and DNS.
- Set a static IP address on your system; refer to “Problem #1: I need to set a static IP address.”
- Refer to “Problem #10: I am a PPPoE user, and I need to remove the proxy settings or the dial-up pop-up window.”

**6. I need to set up a server behind my Router and make it available to the public.**

To use a server like a web, ftp, or mail server, you need to know the respective port numbers they are using. For example, port 80 (HTTP) is used for web; port 21 (FTP) is used for FTP, and port 25 (SMTP outgoing) and port 110 (POP3 incoming) are used for the mail server. You can get more information by viewing the documentation provided with the server you installed.

Follow these steps to set up port forwarding through the Router's web-based utility. We will be setting up web, ftp, and mail servers.

1. Access the Router's web-based utility by going to <http://192.168.1.1> or the IP address of the Router. Go to the Applications & Gaming => Port Forwarding tab.
2. Enter any name you want to use for the Customized Application.
3. Enter the External Port range of the service you are using. For example, if you have a web server, you would enter the range 80 to 80.
4. Check the protocol you will be using, TCP and/or UDP.
5. Enter the IP address of the PC or network device that you want the port server to go to. For example, if the web server's Ethernet adapter IP address is 192.168.1.100, you would enter 100 in the field provided. Check “Appendix E: Finding the MAC Address and IP Address for Your Ethernet Adapter” for details on getting an IP address.
6. Check the **Enable** option for the port services you want to use. Consider the example below:

Application	Start and End	Protocol	IP Address	Enabled
Web server	80 to 80	Both	192.168.1.100	X
FTP server	21 to 21	TCP	192.168.1.101	X
SMTP (outgoing)	25 to 25	Both	192.168.1.102	X
POP3 (incoming)	110 to 110	Both	192.168.1.102	X

When you have completed the configuration, click the **Save Settings** button.

**7. I need to set up online game hosting or use other Internet applications.**

If you want to play online games or use Internet applications, most will work without doing any port forwarding or DMZ hosting. There may be cases when you want to host an online game or Internet application. This would require you to set up the Router to deliver incoming packets or data to a specific computer. This also applies to the Internet applications you are using. The best way to get the information on what port services to use is to go to the website of the online game or application you want to use. Follow these steps to set up online game hosting or use a certain Internet application:

1. Access the Router's web interface by going to <http://192.168.1.1> or the IP address of the Router. Go to the Applications & Gaming => Port Forwarding tab.
2. Enter any name you want to use for the Customized Application.
3. Enter the External Port range of the service you are using. For example, if you want to host Unreal Tournament (UT), you would enter the range 7777 to 27900.
4. Check the protocol you will be using, TCP and/or UDP.
5. Enter the IP address of the PC or network device that you want the port server to go to. For example, if the web server's Ethernet adapter IP address is 192.168.1.100, you would enter 100 in the field provided. Check "Appendix E: Finding the MAC Address and IP Address for Your Ethernet Adapter" for details on getting an IP address.
6. Check the **Enable** option for the port services you want to use. Consider the example below:

Application	Start and End	Protocol	IP Address	Enabled
UT	7777 to 27900	Both	192.168.1.100	X
Half-life	27015 to 27015	Both	192.168.1.105	X
PC Anywhere	5631 to 5631	UDP	192.168.1.102	X
VPN IPSEC	500 to 500	UDP	192.168.1.100	X

When you have completed the configuration, click the **Save Settings** button.

**8. I can't get the Internet game, server, or application to work.**

If you are having difficulties getting any Internet game, server, or application to function properly, consider exposing one PC to the Internet using DeMilitarized Zone (DMZ) hosting. This option is available when an application requires too many ports or when you are not sure which port services to use. Make sure you disable all the forwarding entries if you want to successfully use DMZ hosting, since forwarding has priority over DMZ hosting. (In other words, data that enters the Router will be checked first by the forwarding settings. If the port number that the data enters from does not have port forwarding, then the Router will send the data to whichever PC or network device you set for DMZ hosting.)



Follow these steps to set DMZ hosting:

1. Access the Router's web-based utility by going to <http://192.168.1.1> or the IP address of the Router. Go to the Applications & Gaming => Port Forwarding tab.
2. Disable or remove the entries you have entered for forwarding. Keep this information in case you want to use it at a later time.
3. Go to the Applications & Gaming => DMZ tab.
4. Select **Enable** next to DMZ. In the DMZ Host IP Address field, enter the IP address of the computer you want exposed to the Internet. This will bypass the NAT technology for that computer. Please refer to "Appendix E: Finding the MAC Address and IP Address for Your Ethernet Adapter" for details on getting an IP address.
5. Once completed with the configuration, click the **Save Settings** button.

**9. I forgot my password, or the password prompt always appears when I am saving settings to the Router.**

Reset the Router to factory default by pressing the Reset button for 10 seconds and then releasing it. If you are still getting prompted for a password when saving settings, then perform the following steps:

1. Access the Router's web-based utility by going to <http://192.168.1.1> or the IP address of the Router. Enter the default password admin, and click the Administrations => Management tab.
2. Enter a different password in the Router Password field, and enter the same password in the second field to confirm the password.
3. Click the **Save Settings** button.

**10. I am a PPPoE user, and I need to remove the proxy settings or the dial-up pop-up window.**

If you have proxy settings, you need to disable these on your computer. Because the Router is the gateway for the Internet connection, the computer does not need any proxy settings to gain access. Please follow these directions to verify that you do not have any proxy settings and that the browser you use is set to connect directly to the LAN.

- For Microsoft Internet Explorer 5.0 or higher:
  1. Click **Start, Settings, and Control Panel**. Double-click Internet Options.
  2. Click the **Connections** tab.
  3. Click the **LAN settings** button and remove anything that is checked.
  4. Click the **OK** button to go back to the previous screen.
  5. Click the option **Never dial a connection**. This will remove any dial-up pop-ups for PPPoE users.
- For Netscape 4.7 or higher:
  1. Start **Netscape Navigator**, and click **Edit, Preferences, Advanced, and Proxies**.
  2. Make sure you have Direct connection to the Internet selected on this screen.
  3. Close all the windows to finish.

**11. To start over, I need to set the Router to factory default.**

Hold the **Reset** button for 10 seconds and then release it. This will return the password, forwarding, and other settings on the Router to the factory default settings. In other words, the Router will revert to its original factory configuration.

**12. I need to upgrade the firmware.**

In order to upgrade the firmware with the latest features, you need to go to the Linksys website and download the latest firmware at [www.linksys.com/international](http://www.linksys.com/international).

Follow these steps:

1. Go to the Linksys website at <http://www.linksys.com> and download the latest firmware.
2. To upgrade the firmware, follow the steps in "Appendix C: Upgrading Firmware."

**13. The firmware upgrade failed, and/or the Power LED is flashing.**

The upgrade could have failed for a number of reasons. Follow these steps to upgrade the firmware and/or make the Power LED stop flashing:

- If the firmware upgrade failed, use the TFTP program (it was downloaded along with the firmware). Open the pdf that was downloaded along with the firmware and TFTP program, and follow the pdf's instructions.
- Set a static IP address on the PC; refer to "Problem #2, I need to set a static IP address." Use the following IP address settings for the computer you are using:  
IP Address: 192.168.1.50  
Subnet Mask: 255.255.255.0  
Gateway: 192.168.1.1
- Perform the upgrade using the TFTP program or the Administration tab of the Router's web-based utility.

**14. My DSL service's PPPoE is always disconnecting.**

PPPoE is not actually a dedicated or always-on connection. The DSL ISP can disconnect the service after a period of inactivity, just like a normal phone dial-up connection to the Internet.

- There is a setup option to "keep alive" the connection. This may not always work, so you may need to re-establish connection periodically.
  1. To connect to the Router, go to the web browser, and enter <http://192.168.1.1> or the IP address of the Router.
  2. Enter the password, if asked. (The default password is admin.)
  3. On the Setup screen, select the option **Keep Alive**, and set the Redial Period option at 20 (seconds).
  4. Click the **Save Settings** button.
  5. Click the **Status** tab, and click the **Connect** button.
  6. You may see the login status display as Connecting. Press the F5 key to refresh the screen, until you see the login status display as Connected.
- Click the **Save Settings** button to continue.
- If the connection is lost again, follow steps 1- 6 to re-establish connection.

**15. I can't access my e-mail, web or I am getting corrupted data from the Internet.**

The Maximum Transmission Unit (MTU) setting may need to be adjusted. By default, the MTU is set at 1500. For most DSL users, it is strongly recommended to use MTU 1492.

- If you are having some difficulties, perform the following steps:
  1. To connect to the Router, go to the web browser, and enter `http://192.168.1.1` or the IP address of the Router.
  2. Enter the password, if asked. (The default password is admin.)
  3. Look for the MTU option, and select **Manual**. In the Size field, enter 1492.
  4. Click the **Save Settings** button to continue.
- If your difficulties continue, change the Size to different values. Try this list of values, one value at a time, in this order, until your problem is solved:
  - 1462
  - 1400
  - 1362
  - 1300

**16. The Power LED keeps flashing.**

The Power LED flashes when the device is first powered up. Meantime, the system will boot up itself and check for proper operation. After finishing the checking procedure, the LED stays solid to show that the system is working fine. If the LED keeps flashing after this time, the device is not working properly. Try to flash the firmware by assigning a static IP address to the computer, and then upgrade the firmware. Try using the following settings, IP Address: 192.168.1.50 and Subnet Mask: 255.255.255.0.

**17. When I enter a URL or IP address, I get a time-out error or am prompted to retry.**

- Check if other PCs work. If they do, ensure that your workstation's IP settings are correct (IP Address, Subnet Mask, Default Gateway, and DNS). Restart the computer that is having a problem.
- If the PCs are configured correctly, but still not working, check the Router. Ensure that it is connected and powered on. Connect to it and check its settings. (If you cannot connect to it, check the LAN and power connections.)
- If the Router is configured correctly, check your Internet connection (DSL/cable modem, etc.) to see if it is working correctly. You can remove the Router to verify a direct connection.
- Manually configure the TCP/IP settings with a DNS address provided by your ISP.
- Make sure that your browser is set to connect directly and that any dial-up is disabled. For Internet Explorer, click **Tools, Internet Options**, and then the **Connection** tab. Make sure that Internet Explorer is set to **Never dial a connection**. For Netscape Navigator, click **Edit, Preferences, Advanced**, and **Proxy**. Make sure that Netscape Navigator is set to **Direct connection to the Internet**.

## Frequently Asked Questions

### ***What is the maximum number of IP addresses that the Router will support?***

The Router will support up to 253 IP addresses.

### ***Is IPsec Pass-Through supported by the Router?***

Yes, it is a built-in feature that the Router automatically enables.

### ***Where is the Router installed on the network?***

In a typical environment, the Router is installed between the cable/DSL modem and the LAN. Plug the Router into the cable/DSL modem's Ethernet port.

### ***Does the Router support IPX or AppleTalk?***

No. TCP/IP is the only protocol standard for the Internet and has become the global standard for communications. IPX, a NetWare communications protocol used only to route messages from one node to another, and AppleTalk, a communications protocol used on Apple and Macintosh networks, can be used for LAN to LAN connections, but those protocols cannot connect from the Internet to a LAN.

### ***Does the Internet connection of the Router support 100Mbps Ethernet?***

The Router's current hardware design supports up to 100Mbps Ethernet on its Internet port; however, the Internet connection speed will vary depending on the speed of your broadband connection. The Router also supports 100Mbps over the auto-sensing Fast Ethernet 10/100 switch on the LAN side of the Router.

### ***What is Network Address Translation and what is it used for?***

Network Address Translation (NAT) translates multiple IP addresses on the private LAN to one public address that is sent out to the Internet. This adds a level of security since the address of a PC connected to the private LAN is never transmitted on the Internet. Furthermore, NAT allows the Router to be used with low cost Internet accounts, such as DSL or cable modems, when only one TCP/IP address is provided by the ISP. The user may have many private addresses behind this single address provided by the ISP.

### ***Does the Router support any operating system other than Windows 98SE, Windows Millennium, Windows 2000, or Windows XP?***

Yes, but Linksys does not, at this time, provide technical support for setup, configuration or troubleshooting of any non-Windows operating systems.

### ***Does the Router support ICQ send file?***

Yes, with the following fix: click ICQ menu -> preference -> connections tab->, and check I am behind a firewall or proxy. Then set the firewall time-out to 80 seconds in the firewall setting. The Internet user can then send a file to a user behind the Router.

***I set up an Unreal Tournament Server, but others on the LAN cannot join. What do I need to do?***

If you have a dedicated Unreal Tournament server running, you need to create a static IP for each of the LAN computers and forward ports 7777, 7778, 7779, 7780, 7781, and 27900 to the IP address of the server. You can also use a port forwarding range of 7777 ~ 27900. If you want to use the UT Server Admin, forward another port. (Port 8080 usually works well but is used for remote admin. You may have to disable this.) Then in the [UWeb.WebServer] section of the server.ini file, set the ListenPort to 8080 (to match the mapped port above) and ServerName to the IP assigned to the Router from your ISP.

***Can multiple gamers on the LAN get on one game server and play simultaneously with just one public IP address?***

It depends on which network game or what kind of game server you are using. For example, Unreal Tournament supports multi-login with one public IP.

***How do I get Half-Life: Team Fortress to work with the Router?***

The default client port for Half-Life is 27005. The computers on your LAN need to have "+clientport 2700x" added to the HL shortcut command line; the x would be 6, 7, 8, and on up. This lets multiple computers connect to the same server. One problem: Version 1.0.1.6 won't let multiple computers with the same CD key connect at the same time, even if on the same LAN (not a problem with 1.0.1.3). As far as hosting games, the HL server does not need to be in the DMZ. Just forward port 27015 to the local IP address of the server computer.

***How can I block corrupted FTP downloads?***

If you are experiencing corrupted files when you download a file with your FTP client, try using another FTP program.

***The web page hangs; downloads are corrupt, or nothing but junk characters are being displayed on the screen. What do I need to do?***

Force your Ethernet adapter to 10Mbps or half duplex mode, and turn off the "Auto-negotiate" feature of your Ethernet adapter as a temporary measure. (Please look at the Network Control Panel in your Ethernet adapter's Advanced Properties tab.) Make sure that your proxy setting is disabled in the browser. Check our website at [www.linksys.com](http://www.linksys.com) for more information.

***If all else fails in the installation, what can I do?***

Reset the Router by holding down the reset button until the Power LED fully turns on and off. Reset your cable or DSL modem by powering the unit off and then on. Obtain and flash the latest firmware release that is readily available on the Linksys website, [www.linksys.com](http://www.linksys.com).

***How will I be notified of new Router firmware upgrades?***

All Linksys firmware upgrades are posted on the Linksys website at [www.linksys.com](http://www.linksys.com), where they can be downloaded for free. To upgrade the Router's firmware, use the System tab of the Router's web-based utility. If the Router's Internet connection is working well, there is no need to download a newer firmware version, unless

## Wireless-G Broadband Router

that version contains new features that you would like to use. Downloading a more current version of Router firmware will not enhance the quality or speed of your Internet connection, and may disrupt your current connection stability.

### ***Will the Router function in a Macintosh environment?***

Yes, but the Router's setup pages are accessible only through Internet Explorer 4.0 or Netscape Navigator 4.0 or higher for Macintosh.

### ***I am not able to get the web configuration screen for the Router. What can I do?***

You may have to remove the proxy settings on your Internet browser, e.g., Netscape Navigator or Internet Explorer. Or remove the dial-up settings on your browser. Check with your browser documentation, and make sure that your browser is set to connect directly and that any dial-up is disabled. Make sure that your browser is set to connect directly and that any dial-up is disabled. For Internet Explorer, click Tools, Internet Options, and then the Connection tab. Make sure that Internet Explorer is set to Never dial a connection. For Netscape Navigator, click Edit, Preferences, Advanced, and Proxy. Make sure that Netscape Navigator is set to Direct connection to the Internet.

### ***What is DMZ Hosting?***

Demilitarized Zone (DMZ) allows one IP address (computer) to be exposed to the Internet. Some applications require multiple TCP/IP ports to be open. It is recommended that you set your computer with a static IP if you want to use DMZ Hosting. To get the LAN IP address, see "Appendix E: Finding the MAC Address and IP Address for Your Ethernet Adapter."

### ***If DMZ Hosting is used, does the exposed user share the public IP with the Router?***

No.

### ***Does the Router pass PPTP packets or actively route PPTP sessions?***

The Router allows PPTP packets to pass through.

### ***Is the Router cross-platform compatible?***

Any platform that supports Ethernet and TCP/IP is compatible with the Router.

### ***How many ports can be simultaneously forwarded?***

Theoretically, the Router can establish 520 sessions at the same time, but you can only forward 10 ranges of ports.

### ***What are the advanced features of the Router?***

The Router's advanced features include Advanced Wireless settings, Filters, Port Forwarding, Routing, and DDNS.

***How do I get mIRC to work with the Router?***

Under the Port Forwarding tab, set port forwarding to 113 for the PC on which you are using mIRC.

***Can the Router act as my DHCP server?***

Yes. The Router has DHCP server software built-in.

***Can I run an application from a remote computer over the wireless network?***

This will depend on whether or not the application is designed to be used over a network. Consult the application's documentation to determine if it supports operation over a network.

***What is the IEEE 802.11g standard?***

It is one of the IEEE standards for wireless networks. The 802.11g standard allows wireless networking hardware from different manufacturers to communicate, provided that the hardware complies with the 802.11g standard. The 802.11g standard states a maximum data transfer rate of 54Mbps and an operating frequency of 2.4GHz.

***What IEEE 802.11b features are supported?***

The product supports the following IEEE 802.11b functions:

- CSMA/CA plus Acknowledge protocol
- Multi-Channel Roaming
- Automatic Rate Selection
- RTS/CTS feature
- Fragmentation
- Power Management

***What is ad-hoc mode?***

When a wireless network is set to ad-hoc mode, the wireless-equipped computers are configured to communicate directly with each other. The ad-hoc wireless network will not communicate with any wired network.

***What is infrastructure mode?***

When a wireless network is set to infrastructure mode, the wireless network is configured to communicate with a wired network through a wireless access point.

***What is roaming?***

Roaming is the ability of a portable computer user to communicate continuously while moving freely throughout an area greater than that covered by a single access point. Before using the roaming function, the workstation must make sure that it is the same channel number with the access point of dedicated coverage area.

To achieve true seamless connectivity, the wireless LAN must incorporate a number of different functions. Each node and access point, for example, must always acknowledge receipt of each message. Each node must

maintain contact with the wireless network even when not actually transmitting data. Achieving these functions simultaneously requires a dynamic RF networking technology that links access points and nodes. In such a system, the user's end node undertakes a search for the best possible access to the system. First, it evaluates such factors as signal strength and quality, as well as the message load currently being carried by each access point and the distance of each access point to the wired backbone. Based on that information, the node next selects the right access point and registers its address. Communications between end node and host computer can then be transmitted up and down the backbone.

As the user moves on, the end node's RF transmitter regularly checks the system to determine whether it is in touch with the original access point or whether it should seek a new one. When a node no longer receives acknowledgment from its original access point, it undertakes a new search. Upon finding a new access point, it then re-registers, and the communication process continues.

### ***What is ISM band?***

The FCC and their counterparts outside of the U.S. have set aside bandwidth for unlicensed use in the ISM (Industrial, Scientific and Medical) band. Spectrum in the vicinity of 2.4 GHz, in particular, is being made available worldwide. This presents a truly revolutionary opportunity to place convenient high-speed wireless capabilities in the hands of users around the globe.

### ***What is Spread Spectrum?***

Spread Spectrum technology is a wideband radio frequency technique developed by the military for use in reliable, secure, mission-critical communications systems. It is designed to trade off bandwidth efficiency for reliability, integrity, and security. In other words, more bandwidth is consumed than in the case of narrowband transmission, but the trade-off produces a signal that is, in effect, louder and thus easier to detect, provided that the receiver knows the parameters of the spread-spectrum signal being broadcast. If a receiver is not tuned to the right frequency, a spread-spectrum signal looks like background noise. There are two main alternatives, Direct Sequence Spread Spectrum (DSSS) and Frequency Hopping Spread Spectrum (FHSS).

### ***What is DSSS? What is FHSS? And what are their differences?***

Frequency-Hopping Spread-Spectrum (FHSS) uses a narrowband carrier that changes frequency in a pattern that is known to both transmitter and receiver. Properly synchronized, the net effect is to maintain a single logical channel. To an unintended receiver, FHSS appears to be short-duration impulse noise. Direct-Sequence Spread-Spectrum (DSSS) generates a redundant bit pattern for each bit to be transmitted. This bit pattern is called a chip (or chipping code). The longer the chip, the greater the probability that the original data can be recovered. Even if one or more bits in the chip are damaged during transmission, statistical techniques embedded in the radio can recover the original data without the need for retransmission. To an unintended receiver, DSSS appears as low power wideband noise and is rejected (ignored) by most narrowband receivers.



***What is WEP?***

WEP is Wired Equivalent Privacy, a data privacy mechanism based on a 64-bit or 128-bit shared key algorithm, as described in the IEEE 802.11 standard.

***What is a MAC Address?***

The Media Access Control (MAC) address is a unique number assigned by the manufacturer to any Ethernet networking device, such as a network adapter, that allows the network to identify it at the hardware level. For all practical purposes, this number is usually permanent. Unlike IP addresses, which can change every time a computer logs onto the network, the MAC address of a device stays the same, making it a valuable identifier for the network.

***How do I reset the Router?***

Press the Reset button on the back panel for about five seconds. This will reset the Router to its default settings.

***How do I resolve issues with signal loss?***

There is no way to know the exact range of your wireless network without testing. Every obstacle placed between the Router and a wireless PC will create signal loss. Lead glass, metal, concrete floors, water and walls will inhibit the signal and reduce range. Start with the Router and your wireless PC in the same room and move it away in small increments to determine the maximum range in your environment.

You may also try using different channels, as this may eliminate interference affecting only one channel.

***I have excellent signal strength, but I cannot see my network.***

WEP is probably enabled on the Router, but not on your wireless adapter (or vice versa). Verify that the same WEP keys and levels (64 or 128) are being used on all nodes of your wireless network.

***How many channels/frequencies are available with the Router?***

There are eleven available channels, ranging from 1 to 11 in North, South, and Central America, and 1 to 13 in most of Europe.

If your questions are not addressed here, refer to the Linksys website, [www.linksys.com](http://www.linksys.com).

# Appendix B: Wireless Security

Linksys wants to make wireless networking as safe and easy for you as possible. The current generation of Linksys products provide several network security features, but they require specific action on your part for implementation. So, keep the following in mind whenever you are setting up or using your wireless network.

## Security Precautions

The following is a complete list of security precautions to take (at least steps 1 through 5 should be followed):

1. Change the default SSID.
2. Disable SSID Broadcast.
3. Change the default password for the Administrator account.
4. Enable MAC Address Filtering.
5. Change the SSID periodically.
6. Use the highest encryption algorithm possible. Use WPA if it is available. Please note that this may reduce your network performance.
7. Change the WEP encryption keys periodically.

For information on implementing these security features, refer to “Chapter 6: Configuring the Wireless-G Broadband Router.”

## Security Threats Facing Wireless Networks

Wireless networks are easy to find. Hackers know that in order to join a wireless network, wireless networking products first listen for “beacon messages”. These messages can be easily decrypted and contain much of the network’s information, such as the network’s SSID (Service Set Identifier). Here are the steps you can take:

**Change the administrator’s password regularly.** With every wireless networking device you use, keep in mind that network settings (SSID, WEP keys, etc.) are stored in its firmware. Your network administrator is the only person who can change network settings. If a hacker gets a hold of the administrator’s password, he, too, can change those settings. So, make it harder for a hacker to get that information. Change the administrator’s password regularly.



**Note:** Some of these security features are available only through the network router or access point. Refer to the router or access point’s documentation for more information.

**SSID.** There are several things to keep in mind about the SSID:

1. Disable Broadcast
2. Make it unique
3. Change it often

Most wireless networking devices will give you the option of broadcasting the SSID. While this option may be more convenient, it allows anyone to log into your wireless network. This includes hackers. So, don't broadcast the SSID.

Wireless networking products come with a default SSID set by the factory. (The Linksys default SSID is "linksys".) Hackers know these defaults and can check these against your network. Change your SSID to something unique and not something related to your company or the networking products you use.

Change your SSID regularly so that any hackers who have gained access to your wireless network will have to start from the beginning in trying to break in.

**MAC Addresses.** Enable MAC Address filtering. MAC Address filtering will allow you to provide access to only those wireless nodes with certain MAC Addresses. This makes it harder for a hacker to access your network with a random MAC Address.

**WEP Encryption.** Wired Equivalent Privacy (WEP) is often looked upon as a cure-all for wireless security concerns. This is overstating WEP's ability. Again, this can only provide enough security to make a hacker's job more difficult.

There are several ways that WEP can be maximized:

1. Use the highest level of encryption possible
2. Use "Shared Key" authentication
3. Change your WEP key regularly

**WPA.** Wi-Fi Protected Access (WPA) is the newest and best available standard in Wi-Fi security. Two modes are available: Pre-Shared Key and RADIUS. Pre-Shared Key gives you one encryption methods: TKIP (Temporal Key Integrity Protocol), which utilizes a stronger encryption method and incorporates Message Integrity Code (MIC) to provide protection against hackers.



**Important:** Always remember that each device in your wireless network **MUST** use the same encryption method and encryption key or your wireless network will not function properly.

## Wireless-G Broadband Router

**WPA Pre-Shared Key.** If you do not have a RADIUS server, Select the type of algorithm, TKIP or AES, enter a password in the Pre-Shared key field of 8-64 characters, and enter a Group Key Renewal period time between 0 and 99,999 seconds, which instructs the Router or other device how often it should change the encryption keys.

**WPA RADIUS.** WPA used in coordination with a RADIUS server. (This should only be used when a RADIUS server is connected to the Router or other device.) First, select the type of WPA algorithm, **TKIP** or **AES**. Enter the RADIUS server's IP Address and port number, along with a key shared between the device and the server. Last, enter a Group Key Renewal period, which instructs the device how often it should change the encryption keys.

Implementing encryption may have a negative impact on your network's performance, but if you are transmitting sensitive data over your network, encryption should be used.

These security recommendations should help keep your mind at ease while you are enjoying the most flexible and convenient technology Linksys has to offer.

# Appendix C: Upgrading Firmware

The Broadband Router's firmware is upgraded through the Web-based Utility's Administration tab. Follow these instructions:

1. Download the firmware from Linksys's website at [www.linksys.com/international](http://www.linksys.com/international).
2. Click the *Firmware Upgrade* tab on the Web-Utility's Administration tab, and the *Upgrade Firmware* screen, shown in Figure C-1, will appear.
3. Enter the location of the firmware's file or click the **Browse** button to find the file.
4. Then, click the **Upgrade** button to upgrade the firmware.

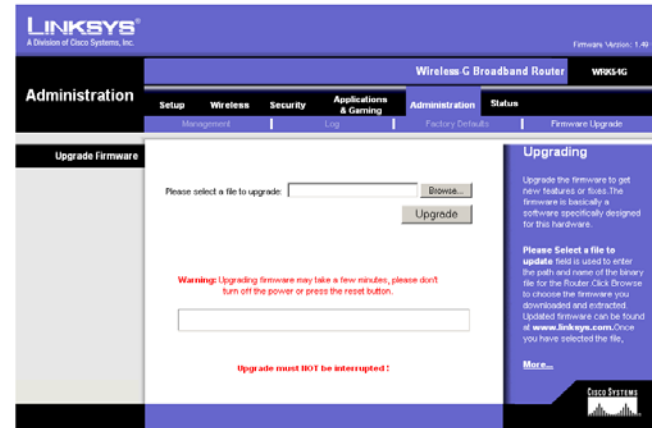


Figure C-1: Upgrade Firmware

# Appendix D: Windows Help

All Linksys wireless products require Microsoft Windows. Windows is the most used operating system in the world and comes with many features that help make networking easier. These features can be accessed through Windows Help and are described in this appendix.

## TCP/IP

Before a computer can communicate with the Broadband Router, TCP/IP must be enabled. TCP/IP is a set of instructions, or protocol, all PCs follow to communicate over a network. This is true for wireless networks as well. Your PCs will not be able to utilize wireless networking without having TCP/IP enabled. Windows Help provides complete instructions on enabling TCP/IP.

## Shared Resources

If you wish to share printers, folder, or files over your network, Windows Help provides complete instructions on utilizing shared resources.

## Network Neighborhood/My Network Places

Other PCs on your network will appear under Network Neighborhood or My Network Places (depending upon the version of Windows you're running). Windows Help provides complete instructions on adding PCs to your network.

# Appendix E: Finding the MAC Address and IP Address for Your Ethernet Adapter

This section describes how to find the MAC address for your computer's Ethernet adapter so you can use the MAC filtering and/or MAC address cloning feature of the Router. You can also find the IP address of your computer's Ethernet adapter. This IP address is used for the Router's filtering, forwarding, and/or DMZ features. Follow the steps in this appendix to find the adapter's MAC or IP address in Windows 98, Me, 2000, or XP.

## Windows 98SE or Me Instructions

1. Click **Start** and **Run**. In the *Open* field, enter **winipcfg**. Then press the **Enter** key or the **OK** button.
2. When the *IP Configuration* screen appears, select the Ethernet adapter you have connected to the Router via a CAT 5 Ethernet network cable. See Figure E-1.
3. Write down the Adapter Address as shown on your computer screen (see Figure E-2). This is the MAC address for your Ethernet adapter and is shown as a series of numbers and letters.

The MAC address/Adapter Address is what you will use for MAC address cloning or MAC filtering.

The example in Figure E-3 shows the Ethernet adapter's IP address as 192.168.1.100. Your computer may show something different.

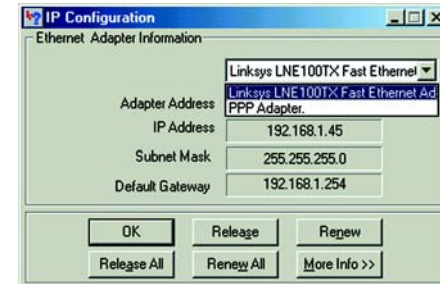


Figure E-1: IP Configuration Screen

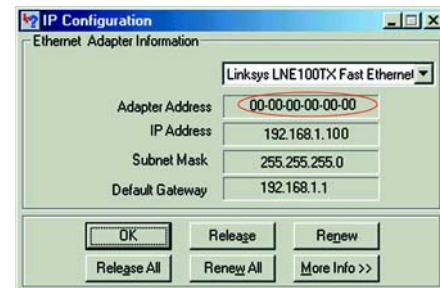


Figure E-2: MAC Address/Adapter Address



**Note:** The MAC address is also called the Adapter Address.

## Windows 2000 or XP Instructions

1. Click **Start** and **Run**. In the *Open* field, enter **cmd**. Press the **Enter** key or click the **OK** button.
2. At the command prompt, enter **ipconfig /all**. Then press the **Enter** key.

Appendix E: Finding the MAC Address and IP Address for Your Ethernet Adapter  
Windows 98SE or Me Instructions

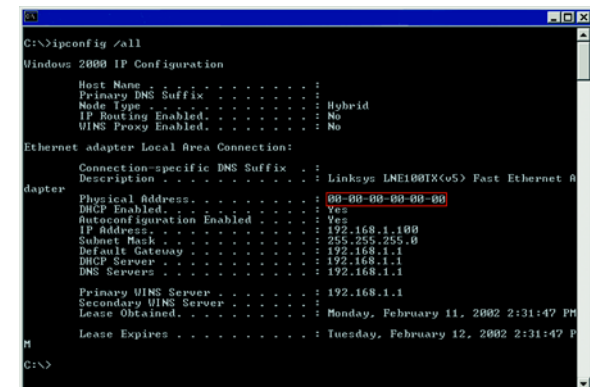


Figure E-3: MAC Address/Physical Address

## Wireless-G Broadband Router

3. Write down the Physical Address as shown on your computer screen (Figure E-3); it is the MAC address for your Ethernet adapter. This appears as a series of numbers and letters.

The MAC address/Physical Address is what you will use for MAC address cloning or MAC filtering.



**Note:** The MAC address is also called the Physical Address.

The example in Figure E-3 shows the Ethernet adapter's IP address as 192.168.1.100. Your computer may show something different.

### For the Router's Web-based Utility

For MAC filtering, enter the 12-digit MAC address in this format, XXXXXXXXXXXX, WITHOUT the hyphens. See Figure E-4.

For MAC address cloning, enter the 12-digit MAC address in the MAC Address field provided, two digits per field. See Figure E-5

The screenshot shows the 'Wireless Network Access' configuration page. At the top, there's a navigation bar with 'Setup', 'Wireless', 'Security', 'Applications & Gaming', 'Administration', and 'Status'. Below this, there's a sub-navigation bar with 'Basic Wireless Settings', 'Wireless Security', 'Wireless Network Access', and 'Advanced Wireless Settings'. The main content area is titled 'Wireless Network Access' and features a 'MAC Filter' dropdown set to 'Enable'. Below this, there's a 'Filter Mode' section with radio buttons for 'Allow' and 'Deny'. The 'Access List' section contains a grid of 24 MAC address input fields, each with a label like 'MAC 01:'. At the bottom of the grid is a button labeled 'Select MAC Address From Networked Computers'. On the right side, there's a 'Wireless Network Access' sidebar with explanatory text and a 'More...' link. At the bottom right, there's a 'Cisco Systems' logo. At the bottom of the page, there are 'Save Settings' and 'Cancel Changes' buttons.

Figure E-4: MAC Address Filter List

The screenshot shows the 'MAC Address Clone' configuration page. At the top, there's a navigation bar with 'Setup', 'Wireless', 'Security', 'Applications & Gaming', 'Administration', and 'Status'. Below this, there's a sub-navigation bar with 'Basic Setup', 'DMZ', 'MAC Address Clone', and 'Advanced Routing'. The main content area is titled 'MAC Address Clone' and features a 'MAC Clone Service' dropdown set to 'Disable'. Below this, there's a 'MAC Address' field with a 'Clone' button. On the right side, there's a 'MAC Address Clone' sidebar with explanatory text and a 'More...' link. At the bottom right, there's a 'Cisco Systems' logo. At the bottom of the page, there are 'Save Settings' and 'Cancel Changes' buttons.

Figure E-5: MAC Address Clone



# Appendix F: Glossary

**802.11a** - An IEEE wireless networking standard that specifies a maximum data transfer rate of 54Mbps and an operating frequency of 5GHz.

**802.11b** - An IEEE wireless networking standard that specifies a maximum data transfer rate of 11Mbps and an operating frequency of 2.4GHz.

**802.11g** - An IEEE wireless networking standard that specifies a maximum data transfer rate of 54Mbps, an operating frequency of 2.4GHz, and backward compatibility with 802.11b devices.

**Access Point** - Device that allows wireless-equipped computers and other devices to communicate with a wired network. Also used to expand the range of a wireless network.

**Adapter** - This is a device that adds network functionality to your PC.

**Ad-hoc** - A group of wireless devices communicating directly with each other (peer-to-peer) without the use of an access point.

**Backbone** - The part of a network that connects most of the systems and networks together, and handles the most data.

**Bandwidth** - The transmission capacity of a given device or network.

**Beacon Interval** - The frequency interval of the beacon, which is a packet broadcast by a router to synchronize a wireless network.

**Bit** - A binary digit.

**Boot** - To start a device and cause it to start executing instructions.

**Bridge** - A device that connects two different kinds of local networks, such as a wireless network to a wired Ethernet network.

**Broadband** - An always-on, fast Internet connection.

**Browser** - A browser is an application program that provides a way to look at and interact with all the information on the World Wide Web.

## Wireless-G Broadband Router

**Buffer** - A block of memory that temporarily holds data to be worked on later when a device is currently too busy to accept the data.

**Cable Modem** - A device that connects a computer to the cable television network, which in turn connects to the Internet.

**CSMA/CA** (Carrier Sense Multiple Access/Collision Avoidance) - A method of data transfer that is used to prevent data loss in a network.

**CTS** (Clear To Send) - A signal sent by a device to indicate that it is ready to receive data.

**Daisy Chain** - A method used to connect devices in a series, one after the other.

**Database** - A collection of data that is organized so that its contents can easily be accessed, managed, and updated.

**DDNS** (Dynamic Domain Name System) - The capability of having a website, FTP, or e-mail server-with a dynamic IP address-use a fixed domain name.

**Default Gateway** - A device that forwards Internet traffic from your local area network.

**DHCP** (Dynamic Host Configuration Protocol) - A protocol that lets one device on a local network, known as a DHCP server, assign temporary IP addresses to the other network devices, typically computers.

**DMZ** (Demilitarized Zone) - Removes the Router's firewall protection from one PC, allowing it to be "seen" from the Internet.

**DNS** (Domain Name Server) - The IP address of your ISP's server, which translates the names of websites into IP addresses.

**Domain** - A specific name for a network of computers.

**Download** - To receive a file transmitted over a network.

**DSL** (Digital Subscriber Line) - An always-on broadband connection over traditional phone lines.

**DSSS** (Direct-Sequence Spread-Spectrum) - A type of radio transmission technology that includes a redundant bit pattern to lessen the probability of data lost during transmission. Used in 802.11b networking.

**DTIM** (Delivery Traffic Indication Message) - A message included in data packets that can increase wireless efficiency.

**Dynamic IP Address** - A temporary IP address assigned by a DHCP server.

**Encryption** - Encoding data to prevent it from being read by unauthorized people.

**Ethernet** - An IEEE standard network protocol that specifies how data is placed on and retrieved from a common transmission medium.

**Finger** - A program that tells you the name associated with an e-mail address.

**Firewall** - Security measures that protect the resources of a local network from intruders.

**Firmware** - 1. In network devices, the programming that runs the device. 2. Programming loaded into read-only memory (ROM) or programmable read-only memory (PROM) that cannot be altered by end-users.

**Fragmentation** - Breaking a packet into smaller units when transmitting over a network medium that cannot support the original size of the packet.

**FTP** (File Transfer Protocol) - A standard protocol for sending files between computers over a TCP/IP network and the Internet.

**Full Duplex** - The ability of a networking device to receive and transmit data simultaneously.

**Gateway** - A system that interconnects networks.

**Half Duplex** - Data transmission that can occur in two directions over a single line, but only one direction at a time.

**Hardware** - The physical aspect of computers, telecommunications, and other information technology devices.

**HTTP** (HyperText Transport Protocol) - The communications protocol used to connect to servers on the World Wide Web.

**IEEE** (The Institute of Electrical and Electronics Engineers) - An independent institute that develops networking standards.

**Infrastructure** - Currently installed computing and networking equipment.

**Infrastructure Mode** - Configuration in which a wireless network is bridged to a wired network via an access point.

**IP** (Internet Protocol) - A protocol used to send data over a network.

**IP Address** - The address used to identify a computer or device on a network.

## Wireless-G Broadband Router

**IPCONFIG** - A Windows 2000 and XP utility that displays the IP address for a particular networking device.

**IPSec** (Internet Protocol Security) - A VPN protocol used to implement secure exchange of packets at the IP layer.

**ISM band** - Radio band used in wireless networking transmissions.

**ISP** (Internet Service Provider) - A company that provides access to the Internet.

**LAN** (Local Area Network) - The computers and networking products that make up the network in your home or office.

**MAC** (Media Access Control) Address - The unique address that a manufacturer assigns to each networking device.

**Mbps** (Megabits Per Second) - One million bits per second; a unit of measurement for data transmission.

**Multicasting** - Sending data to a group of destinations at once.

**NAT** (Network Address Translation) - NAT technology translates IP addresses of a local area network to a different IP address for the Internet.

**Network** - A series of computers or devices connected for the purpose of data sharing, storage, and/or transmission between users.

**NNTP** (Network News Transfer Protocol) - The protocol used to connect to Usenet groups on the Internet.

**Node** - A network junction or connection point, typically a computer or work station.

**OFDM** (Orthogonal Frequency Division Multiplexing) - A type of modulation technology that separates the data stream into a number of lower-speed data streams, which are then transmitted in parallel. Used in 802.11a, 802.11g, and powerline networking.

**Packet** - A unit of data sent over a network.

**Passphrase** - Used much like a password, a passphrase simplifies the WEP encryption process by automatically generating the WEP encryption keys for Linksys products.

**Ping** (Packet INternet Groper) - An Internet utility used to determine whether a particular IP address is online.

**POP3** (Post Office Protocol 3) - A standard protocol used to retrieve e-mail stored on a mail server.

**Port** - 1. The connection point on a computer or networking device used for plugging in a cable or an adapter. 2. The virtual connection point through which a computer uses a specific application on a server.

## Wireless-G Broadband Router

**PPPoE** (Point to Point Protocol over Ethernet) - A type of broadband connection that provides authentication (username and password) in addition to data transport.

**PPTP** (Point-to-Point Tunneling Protocol) - A VPN protocol that allows the Point to Point Protocol (PPP) to be tunneled through an IP network. This protocol is also used as a type of broadband connection in Europe.

**Preamble** - Part of the wireless signal that synchronizes network traffic.

**RJ-45** (Registered Jack-45) - An Ethernet connector that holds up to eight wires.

**Roaming** - The ability to take a wireless device from one access point's range to another without losing the connection.

**Router** - A networking device that connects multiple networks together, such as a local network and the Internet.

**RTS** (Request To Send) - A packet sent when a computer has data to transmit. The computer will wait for a CTS (Clear To Send) message before sending data.

**Server** - Any computer whose function in a network is to provide user access to files, printing, communications, and other services.

**SMTP** (Simple Mail Transfer Protocol) - The standard e-mail protocol on the Internet.

**SNMP** (Simple Network Management Protocol) - A widely used network monitoring and control protocol.

**Software** - Instructions for the computer. A series of instructions that performs a particular task is called a "program".

**Spread Spectrum** - Wideband radio frequency technique used for more reliable and secure data transmission.

**SSID** (Service Set Identifier) - Your wireless network's name.

**Static IP Address** - A fixed address assigned to a computer or device that is connected to a network.

**Static Routing** - Forwarding data in a network via a fixed path.

**Subnet Mask** - An address code that determines the size of the network.

**Switch** - 1. Device that is the central point of connection for computers and other devices in a network, so data can be shared at full transmission speeds. 2. A device for making, breaking, or changing the connections in an electrical circuit.

## Wireless-G Broadband Router

**TCP/IP** (Transmission Control Protocol/Internet Protocol) - A network protocol for transmitting data that requires acknowledgement from the recipient of data sent.

**Telnet** - A user command and TCP/IP protocol used for accessing remote PCs.

**TFTP** (Trivial File Transfer Protocol) - A version of the TCP/IP FTP protocol that uses UDP and has no directory or password capability.

**Throughput** - The amount of data moved successfully from one node to another in a given time period.

**Topology** - The physical layout of a network.

**TX Rate** - Transmission Rate.

**UDP** (User Datagram Protocol) - A network protocol for transmitting data that does not require acknowledgement from the recipient of the data that is sent.

**Upgrade** - To replace existing software or firmware with a newer version.

**Upload** - To transmit a file over a network.

**URL** (Uniform Resource Locator) - The address of a file located on the Internet.

**VPN** (Virtual Private Network) - A security measure to protect data as it leaves one network and goes to another over the Internet.

**WAN** (Wide Area Network) - The Internet.

**WEP** (Wired Equivalent Privacy) - A method of encrypting data transmitted on a wireless network for greater security.

**WINIPCFG** - A Windows 98 and Millennium utility that displays the IP address for a particular networking device.

**WLAN** (Wireless Local Area Network) - A group of computers and associated devices that communicate with each other wirelessly.

# Appendix G: Specifications

<b>Model</b>	<b>WRK54G</b>
<b>Standards</b>	<b>IEEE 802.3, IEEE 802.3u, IEEE 802.11g, IEEE 802.11b</b>
<b>Channels</b>	<b>11 Channels (most of North, South, and Central America) 13 Channels (most of Europe)</b>
<b>Ports/Buttons</b>	<b>Internet: One 10/100 RJ-45 Port LAN: Four 10/100 RJ-45 Switched Ports One Power Port One Reset Button</b>
<b>Cabling Type</b>	<b>Ethernet Network Cable</b>
<b>LEDs</b>	<b>Power, DMZ, WLAN, Ethernet (1-4), Internet</b>
<b>RF Power Output</b>	<b>20 dBm maximum</b>
<b>UPnP able/cert</b>	<b>Able</b>
<b>Security Features</b>	<b>NAT Firewall, Internet Policy</b>
<b>Wireless Security</b>	<b>Wi-Fi Protected Access™ (WPA), WEP, Wireless MAC Filtering</b>
<b>Dimensions</b>	<b>186 mm x 48 mm x 154 mm</b>
<b>Unit Weight</b>	<b>0.34 kg</b>
<b>Power</b>	<b>External, 12V DC, 1.0A</b>
<b>Certifications</b>	<b>FCC, CE, IC-03</b>
<b>Operating Temp.</b>	<b>0°C to 40°C (32°F to 104°F)</b>

**Wireless-G Broadband Router**

**Storage Temp.**        -20°C to 70°C (-4°F to 158°F)

**Operating Humidity**    10% to 85%, Non-Condensing

**Storage Humidity**      5% to 90%, Non-Condensing



# Appendix H: Warranty Information

## WARRANTY

Linksys warrants to You that, for a period of three years (the "Warranty Period"), your Linksys Product will be substantially free of defects in materials and workmanship under normal use. Your exclusive remedy and Linksys' entire liability under this warranty will be for Linksys at its option to repair or replace the Product or refund Your purchase price less any rebates. This limited warranty extends only to the original purchaser.

If the Product proves defective during the Warranty Period call Linksys Technical Support in order to obtain a Return Authorization Number, if applicable. **BE SURE TO HAVE YOUR PROOF OF PURCHASE ON HAND WHEN CALLING.** If You are requested to return the Product, mark the Return Authorization Number clearly on the outside of the package and include a copy of your original proof of purchase. **RETURN REQUESTS CANNOT BE PROCESSED WITHOUT PROOF OF PURCHASE.** You are responsible for shipping defective Products to Linksys. Linksys pays for UPS Ground shipping from Linksys back to You only. Customers located outside of the United States of America and Canada are responsible for all shipping and handling charges.

**ALL IMPLIED WARRANTIES AND CONDITIONS OF MERCHANTABILITY OR FITNESS FOR A PARTICULAR PURPOSE ARE LIMITED TO THE DURATION OF THE WARRANTY PERIOD. ALL OTHER EXPRESS OR IMPLIED CONDITIONS, REPRESENTATIONS AND WARRANTIES, INCLUDING ANY IMPLIED WARRANTY OF NON-INFRINGEMENT, ARE DISCLAIMED.** Some jurisdictions do not allow limitations on how long an implied warranty lasts, so the above limitation may not apply to You. This warranty gives You specific legal rights, and You may also have other rights which vary by jurisdiction.

This warranty does not apply if the Product (a) has been altered, except by Linksys, (b) has not been installed, operated, repaired, or maintained in accordance with instructions supplied by Linksys, or (c) has been subjected to abnormal physical or electrical stress, misuse, negligence, or accident. In addition, due to the continual development of new techniques for intruding upon and attacking networks, Linksys does not warrant that the Product will be free of vulnerability to intrusion or attack.

**TO THE EXTENT NOT PROHIBITED BY LAW, IN NO EVENT WILL LINKSYS BE LIABLE FOR ANY LOST DATA, REVENUE OR PROFIT, OR FOR SPECIAL, INDIRECT, CONSEQUENTIAL, INCIDENTAL OR PUNITIVE DAMAGES, REGARDLESS OF THE THEORY OF LIABILITY (INCLUDING NEGLIGENCE), ARISING OUT OF OR RELATED TO THE USE OF OR INABILITY TO USE THE PRODUCT (INCLUDING ANY SOFTWARE), EVEN IF LINKSYS HAS BEEN ADVISED OF THE POSSIBILITY OF SUCH DAMAGES. IN NO EVENT WILL LINKSYS' LIABILITY EXCEED THE AMOUNT PAID BY YOU FOR THE PRODUCT.** The foregoing limitations will apply even if any warranty or remedy provided under this Agreement fails of its essential purpose. Some jurisdictions do not allow the exclusion or limitation of incidental or consequential damages, so the above limitation or exclusion may not apply to You.

**This Warranty is valid and may be processed only in the country of purchase.**

Please direct all inquiries to: Linksys, P.O. Box 18558, Irvine, CA 92623.

# Appendix I: Regulatory Information

## FCC Statement

This product has been tested and complies with the specifications for a Class B digital device, pursuant to Part 15 of the FCC Rules. These limits are designed to provide reasonable protection against harmful interference in a residential installation. This equipment generates, uses, and can radiate radio frequency energy and, if not installed and used according to the instructions, may cause harmful interference to radio communications. However, there is no guarantee that interference will not occur in a particular installation. If this equipment does cause harmful interference to radio or television reception, which is found by turning the equipment off and on, the user is encouraged to try to correct the interference by one or more of the following measures:

- Reorient or relocate the receiving antenna
- Increase the separation between the equipment or devices
- Connect the equipment to an outlet other than the receiver's
- Consult a dealer or an experienced radio/TV technician for assistance

## FCC Radiation Exposure Statement

This equipment complies with FCC radiation exposure limits set forth for an uncontrolled environment. This equipment should be installed and operated with minimum distance 20cm between the radiator and your body.

Compliance Information for 2.4-GHz Wireless Products Relevant to the EU and Other Countries Following EU Directive 1999/5/EC (R&TTE Directive)

Declaration of Conformity with Regard to the EU Directive 1995/5/EC (R&TTE Directive)

Deutsch [German]:	Dieses Gerät entspricht den grundlegenden Anforderungen und den weiteren entsprechenden Vorgaben der Richtlinie 1999/5/EU.
Dansk [Danish]:	Dette udstyr er i overensstemmelse med de væsentlige krav og andre relevante bestemmelser i Direktiv 1999/5/EF.
English:	This equipment is in compliance with the essential requirements and other relevant provisions of Directive 1999/5/EC.
Español [Spanish]:	Este equipo cumple con los requisitos esenciales así como con otras disposiciones de la Directiva 1999/5/CE.
Ελληνική [Greek]:	Αυτός ο εξοπλισμός είναι σε συμμόρφωση με τις ουσιώδεις απαιτήσεις και άλλες σχετικές διατάξεις της Οδηγίας 1999/5/ΕC.
Français [French]:	Cet appareil est conforme aux exigences essentielles et aux autres dispositions pertinentes de la Directive 1999/5/EC.
Íslenska [Icelandic]:	Þetta tæki er samkvæmt grunnkröfum og öðrum viðeigandi ákvæðum Tilskipunar 1999/5/EC.
Italiano [Italian]:	Questo apparato é conforme ai requisiti essenziali ed agli altri principi sanciti dalla Direttiva 1999/5/CE.
Nederlands [Dutch]:	Dit apparaat voldoet aan de essentiële eisen en andere van toepassing zijnde bepalingen van de Richtlijn 1999/5/EC.
Norsk [Norwegian]:	Dette utstyret er i samsvar med de grunnleggende krav og andre relevante bestemmelser i EU-direktiv 1999/5/EF.
Português [Portuguese]:	Este equipamento está em conformidade com os requisitos essenciais e outras provisões relevantes da Directiva 1999/5/EC.
Suomi [Finnish]:	Tämä laite täyttää direktiivin 1999/5/EY olennaiset vaatimukset ja on siinä asetettujen muiden laitetta koskevien määräysten mukainen.
Svenska [Swedish]:	Denna utrustning är i överensstämmelse med de väsentliga kraven och andra relevanta bestämmelser i Direktiv 1999/5/EC.

**NOTE:** If you need any technical documentation, see the “How to Access Technical Documents on [www.linksys.com/international](http://www.linksys.com/international)” section for more information.

## Wireless-G Broadband Router

The following standards were applied during the assessment of the product against the requirements of the Directive 1999/5/EC:

- Radio: EN 300.328
- EMC: EN 301 489-1, EN 301 489-17
- Safety: EN 60950

### CE Marking

For the Linksys Wireless-B and Wireless-G products, the following CE mark, notified body number (where applicable), and class 2 identifier are added to the equipment.

CE 0560 ⓘ or CE 0678 ⓘ or CE ⓘ

Check the CE label on the product to find out which notified body was involved during the assessment.

### National Restrictions

This product may be used in all EU countries (and other countries following the EU directive 1999/5/EC) without any limitation except for the countries mentioned below:

*Ce produit peut être utilisé dans tous les pays de l'UE (et dans tous les pays ayant transposés la directive 1999/5/CE) sans aucune limitation, excepté pour les pays mentionnés ci-dessous:*

*Questo prodotto è utilizzabile in tutte i paesi EU (ed in tutti gli altri paesi che seguono le direttive EU 1999/5/EC) senza nessuna limitazione, eccetto per i paesi menzionati di seguito:*

*Das Produkt kann in allen EU Staaten ohne Einschränkungen eingesetzt werden (sowie in anderen Staaten die der EU Direktive 1995/5/CE folgen) mit Ausnahme der folgenden aufgeführten Staaten:*

### Belgium

Outdoor wireless links with a range in excess of 300 meters need to be notified at the Belgian Institute for Postal Services and Telecommunications (BIPT). Please check <http://www.bipt.be> for more details.

*Draadloze verbindingen voor buitengebruik en met een reikwijdte van meer dan 300 meter dienen aangemeld te worden bij het Belgisch Instituut voor postdiensten en telecommunicatie (BIPT). Zie <http://www.bipt.be> voor meer gegevens.*

*Les liaisons sans fil pour une utilisation en extérieur d'une distance supérieure à 300 mètres doivent être notifiées à l'Institut Belge des services Postaux et des Télécommunications (IBPT). Visitez <http://www.ibpt.be> pour de plus amples détails.*

#### France

In case the product is used outdoors, the output power is restricted in some parts of the band. See Table 1 or check <http://www.art-telecom.fr/> for more details.

*Dans la cas d'une utilisation en extérieur, la puissance de sortie est limitée pour certaines parties de la bande. Reportez-vous à la table 1 ou visitez <http://www.art-telecom.fr/> pour de plus amples détails.*

Table 1: Applicable Power Levels in France

Location	Frequency Range (MHz)	Power (EIRP)
Indoor (No restrictions)	2400-2483.5	100 mW (20 dBm)
Outdoor	2400-2454 2454-2483.5	100 mW (20 dBm) 10 mW (10 dBm)

#### Italy

This product meets the National Radio Interface and the requirements specified in the National Frequency Allocation Table for Italy. Unless operating within the boundaries of the owner's property, the use of this 2.4 GHz Wireless LAN product requires a 'general authorization'. Please check with <http://www.comunicazioni.it/it/> for more details.

*Questo prodotto è conforme alla specifiche di Interfaccia Radio Nazionali e rispetta il Piano Nazionale di ripartizione delle frequenze in Italia. Se non viene installato all'interno del proprio fondo, l'utilizzo di prodotti Wireless LAN a 2.4 GHz richiede una "Autorizzazione Generale". Consultare <http://www.comunicazioni.it/it/> per maggiori dettagli.*

#### Product Usage Restrictions

This product is designed for indoor usage only. Outdoor usage is not recommended.

This product is designed for use with the included integral or external (dedicated) antenna(s). Use of non-dedicated or third-party antenna(s) is not recommended and is not supported by Linksys.

### Power Output of Your Device

To comply with your country's regulations, you may have to change the power output of your wireless device. Proceed to the appropriate section for your device.

**Note:** The power output setting may not be available on all wireless products. For more information, refer to the documentation on your product's CD or at <http://www.linksys.com/international>.

### Wireless Adapters

Wireless adapters have the power output set to 100% by default. Maximum power output on each adapter does not exceed 20 dBm (100 mW); it is generally 18 dBm (64 mW) or below. If you need to alter your wireless adapter's power output, follow the appropriate instructions for your computer's Windows operating system:

#### Windows XP

1. Double-click the **Wireless** icon in your desktop's system tray.
2. Open the *Wireless Network Connection* window.
3. Click the **Properties** button.
4. Select the **General** tab, and click the **Configure** button.
5. In the *Properties* window, click the **Advanced** tab.
6. Select **Power Output**.
7. From the pull-down menu on the right, select the wireless adapter's power output percentage.

#### Windows 2000

1. Open the **Control Panel**.
2. Double-click **Network and Dial-Up Connections**.
3. Select your current wireless connection, and select **Properties**.
4. From the *Properties* screen, click the **Configure** button.
5. Click the **Advanced** tab, and select **Power Output**.
6. From the pull-down menu on the right, select the wireless adapter's power setting.

If your computer is running Windows Millennium or 98, then refer to Windows Help for instructions on how to access the advanced settings of a network adapter.

### Wireless Access Points, Routers, or Other Wireless Products

If you have a wireless access point, router or other wireless product, use its Web-based Utility to configure its power output setting (refer to the product's documentation for more information).

## Technical Documents on [www.linksys.com/international](http://www.linksys.com/international)

Follow these steps to access technical documents:

1. Browse to <http://www.linksys.com/international>.
2. Click the region in which you reside.
3. Click the name of the country in which you reside.
4. Click **Products**.
5. Click the appropriate product category.
6. Select a product.
7. Click the type of documentation you want. The document will automatically open in PDF format.

**Note:** If you have questions regarding the compliance of these products or you cannot find the information you are looking for, please contact your local sales office. Visit <http://www.linksys.com/international> for more details.

# Appendix J: Contact Information

Need to contact Linksys?

Visit us online for information on the latest products and updates to your existing products at:

<http://www.linksys.com/international>

If you experience problems with any Linksys product, you can e-mail us at:

In Europe	E-mail Address
Austria	support.at@linksys.com
Belgium	support.be@linksys.com
Denmark	support.dk@linksys.com
France	support.fr@linksys.com
Germany	support.de@linksys.com
Italy	support.it@linksys.com
Netherlands	support.nl@linksys.com
Norway	support.no@linksys.com
Portugal	support.pt@linksys.com
Spain	support.es@linksys.com
Sweden	support.se@linksys.com
Switzerland	support.ch@linksys.com
United Kingdom & Ireland	support.uk@linksys.com

Outside of Europe	E-mail Address
Latin America	support.la@linksys.com
U.S. and Canada	support@linksys.com



# LINKSYS®

A Division of Cisco Systems, Inc.



2,4GHz  
802.11g

## Wireless-G

### Notebook Adapter

# User Guide



Model No. **WPC54G (EU/LA)**



## Copyright and Trademarks

Specifications are subject to change without notice. Linksys is a registered trademark or trademark of Cisco Systems, Inc. and/or its affiliates in the U.S. and certain other countries. Copyright © 2004 Cisco Systems, Inc. All rights reserved. Other brands and product names are trademarks or registered trademarks of their respective holders.

## This User Guide

The User Guide to the Wireless-G Notebook Adapter has been designed to make understanding networking easier than ever. Look for the following items when reading this guide:



This checkmark means there is a note of interest and is something you should pay special attention to while using the Adapter.



This exclamation point means there is a caution or warning and is something that could damage your property or the Adapter.



This question mark provides you with a reminder about something you might need to do while using the Adapter.

In addition to these symbols, there are definitions for technical terms that are presented like this:

***word: definition.***

Also, each figure (diagram, screenshot, or other image) is provided with a figure number and description, like this:

**Figure 0-1: Sample Figure Description**

Figure numbers and descriptions can also be found in the “List of Figures” section in the “Table of Contents”.

# Table of Contents

<b>Chapter 1: Introduction</b>	<b>1</b>
Welcome	1
What's in this Guide?	2
<b>Chapter 2: Planning your Wireless Network</b>	<b>4</b>
Network Topology	4
Roaming	4
Network Layout	5
<b>Chapter 3: Getting to Know the Wireless-G Notebook Adapter</b>	<b>6</b>
The LED Indicators	6
<b>Chapter 4: Software Installation and Configuration</b>	<b>7</b>
The Installation Procedure	8
<b>Chapter 5: Hardware Installation</b>	<b>11</b>
Connecting the Adapter	11
<b>Chapter 6: Using the WLAN Monitor</b>	<b>12</b>
Accessing the WLAN Monitor	12
Link Information	12
Site Survey	15
Profiles	16
Creating a New Profile	17
<b>Appendix A: Troubleshooting</b>	<b>29</b>
Common Problems and Solutions	29
Frequently Asked Questions	30
<b>Appendix B: Wireless Security</b>	<b>33</b>
Security Precautions	33
Security Threats Facing Wireless Networks	33
<b>Appendix C: Windows Help</b>	<b>36</b>
<b>Appendix D: Glossary</b>	<b>37</b>
<b>Appendix E: Specifications</b>	<b>44</b>
<b>Appendix F: Warranty Information</b>	<b>45</b>
<b>Appendix G: Regulatory Information</b>	<b>46</b>
<b>Appendix H: Contact Information</b>	<b>52</b>

# List of Figures

Figure 3-1: Front Panel	6
Figure 4-1: The Setup Wizard's Welcome screen	7
Figure 4-2: The Setup Wizard's License Agreement	8
Figure 4-3: The Setup Wizard's Network Mode screen	8
Figure 4-4: The Setup Wizard's Wireless Channels screen	9
Figure 4-5: The Setup Wizard's Finalize Settings screen	9
Figure 4-6: The Setup Wizard's Congratulations Screen	10
Figure 5-1: How the Adapter installs into your notebook	11
Figure 6-1: The WLAN Monitor icon	12
Figure 6-2: Link Information	12
Figure 6-3: More Information-Network Settings	13
Figure 6-4: More Information-Network Statistics	14
Figure 6-5: Site Survey	15
Figure 6-6: Profiles	16
Figure 6-7: Importing a Profile	16
Figure 6-8: Exporting a Profile	17
Figure 6-9: Creating a New Profile	17
Figure 6-10: Enter Profile Name	17
Figure 6-11: Choose a network type	18
Figure 6-12: Wireless Settings for New Profile	18
Figure 6-13: Network Setting for New Profile	19
Figure 6-14: Security Setting for New Profile	19
Figure 6-15: WEP Settings	20
Figure 6-16: WPA-PSK Settings	20
Figure 6-17: TKIP Settings	21
Figure 6-18: WPA RADIUS Settings	22
Figure 6-19: TKIP Settings	22
Figure 6-20: EAP-TLS Authentication	23
Figure 6-21: EAP-TTLS Authentication	23
Figure 6-22: EAP-MD5 Authentication	24

Figure 6-23: EAP-PEAP Authentication	24
Figure 6-24: EAP-LEAP Authentication	24
Figure 6-25: RADIUS Settings	25
Figure 6-26: EAP-TLS Authentication	25
Figure 6-27: EAP-TTLS Authentication	26
Figure 6-28: EAP-MD5 Authentication	26
Figure 6-29: EAP-PEAP Authentication	27
Figure 6-30: LEAP Authentication	27
Figure 6-31: Confirm New Settings for New Profile	28
Figure 6-32: Congratulations for New Profile	28

# Chapter 1: Introduction

## Welcome

Thank you for choosing the Wireless-G Notebook Adapter. With this Adapter, your wireless networking experience will be faster and easier than ever.

Like all wireless products, the Adapter allows for greater range and mobility within your wireless network. This adapter communicates over the 54Mbps 802.11g wireless standard, which is almost five times faster than 802.11b. But since they share the same 2.4GHz radio band, the Adapter can also communicate with the widely used 11Mbps 802.11b standard.

PCs equipped with wireless cards and adapters can communicate without cumbersome cables. By sharing the same wireless settings, within their transmission radius, they form a wireless network.

The included Setup Wizard will walk you through configuring the adapter to your network's settings, step by step. Then just slide it into your notebook's PC Card slot and enjoy network access with your notebook computer, while retaining true mobility.

Once you're connected, you can keep in touch with your e-mail, access the Internet, and share files and other resources such as printers and network storage with other computers on the network. At home, you can surf the web or use instant messaging to chat with friends while sitting out on the patio. Your wireless connection is protected by the new, industrial-strength security of Wireless Protected Access (WPA).

You'll also be able to connect with any of the growing number of public wireless hotspots springing up in coffee shops, airport lounges, hotels and convention centers. And as those hotspots upgrade to the new high-speed Wireless-G standard, you'll be ready to take advantage of the increased speeds.

Get connected to current-standard 802.11b networks today, and be prepared for the future with the Wireless-G Notebook Adapter from Linksys.

**network:** a series of computers or devices connected for the purpose of data sharing, storage, and/or transmission between users.

**adapter:** a device that adds network functionality to your PC.

**802.11b:** an IEEE wireless networking standard that specifies a maximum data transfer rate of 11Mbps and an operating frequency of 2.4GHz.

**802.11g** an IEEE wireless networking standard that specifies a maximum data transfer rate of 54Mbps and an operating frequency of 2.4GHz.

## What's in this Guide?

This user guide covers the steps for setting up and using the Wireless-G Notebook Adapter.

- **Chapter 1: Introduction**  
This chapter describes the Adapter's applications and this User Guide.
- **Chapter 2: Planning Your Wireless Network**  
This chapter discusses a few of the basics about wireless networking.
- **Chapter 3: Getting to Know the Wireless-G Notebook Adapter**  
This chapter describes the physical features of the Adapter.
- **Chapter 4: Software Installation and Configuration**  
This chapter instructs you on how to install the Adapter's Setup Wizard and Configure the Adapter
- **Chapter 5: Hardware Installation**  
This chapter shows you how to connect the Adapter to your PC.
- **Chapter 6: Using the WLAN Monitor**  
This chapter show you how to use the Adapter's WLAN Monitor.
- **Appendix A: Troubleshooting**  
This appendix describes some problems and solutions, as well as frequently asked questions, regarding installation and use of the Adapter.
- **Appendix B: Wireless Security**  
This appendix discusses security issues regarding wireless networking and measures you can take to help protect your wireless network.
- **Appendix C: Windows Help**  
This appendix describes how you can use Windows Help for instructions about networking, such as installing the TCP/IP protocol.
- **Appendix D: Glossary**  
This appendix gives a brief glossary of terms frequently used in networking.
- **Appendix E: Specifications**  
This appendix provides the Adapter's technical specifications.
- **Appendix F: Warranty Information**  
This appendix supplies the Adapter's warranty information.

## Wireless-G Notebook Adapter

- **Appendix G: Regulatory Information**  
This appendix supplies the Adapter's regulatory information.
- **Appendix H: Contact Information**  
This appendix provides contact information for a variety of Linksys resources, including Technical Support.



# Chapter 2: Planning Your Wireless Network

## Network Topology

A wireless network is a group of computers, each equipped with one wireless adapter. Computers in a wireless network must be configured to share the same radio channel. Several PCs equipped with wireless cards or adapters can communicate with one another to form an ad-hoc network.

Linksys wireless adapters also provide users access to a wired network when using an access point or wireless router. An integrated wireless and wired network is called an infrastructure network. Each wireless PC in an infrastructure network can talk to any computer in a wired network infrastructure via the access point or wireless router.

An infrastructure configuration extends the accessibility of a wireless PC to a wired network, and can double the effective wireless transmission range for two wireless adapter PCs. Since an access point is able to forward data within a network, the effective transmission range in an infrastructure network can be doubled.

## Roaming

Infrastructure mode also supports roaming capabilities for mobile users. Roaming means that you can move your wireless PC within your network and the access points will pick up the wireless PC's signal, providing that they both share the same channel and SSID.

Before enabling you consider roaming, choose a feasible radio channel and optimum access point position. Proper access point positioning combined with a clear radio signal will greatly enhance performance.

**topology:** the physical layout of a network.

**ad-hoc:** a group of wireless devices communicating directly with each other (peer-to-peer) without the use of an access point.

**infrastructure:** a wireless network that is bridged to a wired network via an access point.

**roaming:** the ability to take a wireless device from one access point's range to another without losing the connection.

**ssid:** your wireless network's name.

## Network Layout

Linksys wireless access points and wireless routers have been designed for use with 802.11a, 802.11b, and 802.11g products. With 802.11g products communicating with the 802.11b standard and some products incorporating both "a" and "g", products using these standards can communicate with each other.

Access points and wireless routers are compatible with 802.11a, 802.11b and 802.11g adapters, such as the PC Cards for your laptop computers, PCI Card for your desktop PC, and USB Adapters for when you want to enjoy USB connectivity. Wireless products will also communicate with the wireless PrintServer.

When you wish to connect your wired network with your wireless network, network ports on access points and wireless routers can be connected to any of Linksys's switches or routers.

With these, and many other, Linksys products, your networking options are limitless. Go to the Linksys website at [www.linksys.com/international](http://www.linksys.com/international) for more information about wireless products.

# Chapter 3: Getting to Know the Wireless-G Notebook Adapter

## The LED Indicators

The Network Adapter's LEDs display information about network activity.

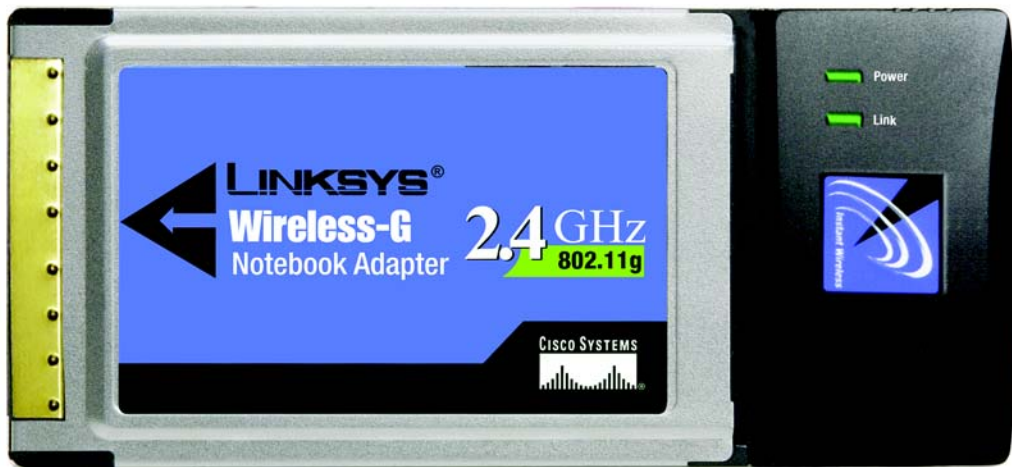


Figure 3-1: Front Panel

**Power**      *Green.* The Power LED lights up when the Adapter is powered on.

**Link**        *Green.* The Link LED lights up when the Adapter has an active connection.

# Chapter 4: Software Installation and Configuration

The Wireless-G Notebook Adapter Setup Wizard will guide you through the installation procedure. The Setup Wizard will install the WLAN Monitor and driver, as well as configure the Adapter.



**NOTE:** You must run the Setup Wizard to install the software before installing the hardware.

Insert the **Setup Wizard CD-ROM** into your CD-ROM drive. The Setup Wizard should run automatically, and the *Welcome* screen should appear. If it does not, click the **Start** button and choose **Run**. In the field that appears, enter **D:\setup.exe** (if "D" is the letter of your CD-ROM drive).

On the Welcome screen, you have the following choices:

**Install** - Click the **Install** button to begin the software installation process.

**User Guide** - Click the **User Guide** button to open the PDF file of this User Guide.

**Exit** - Click the **Exit** button to exit the Setup Wizard.

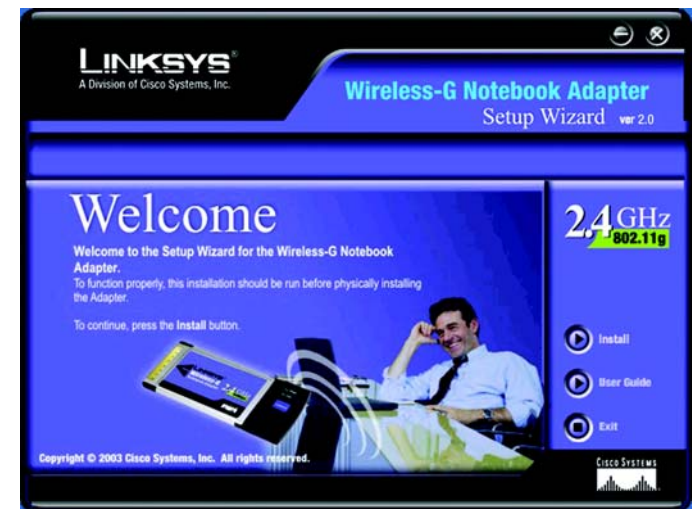


Figure 4-1: The Setup Wizard's Welcome screen

## The Installation Procedure

1. To install the Adapter, click the **Install** button on the Welcome screen.
2. After reading the License Agreement, click the **Next** button if you agree, or click the **Cancel** button to end the installation.

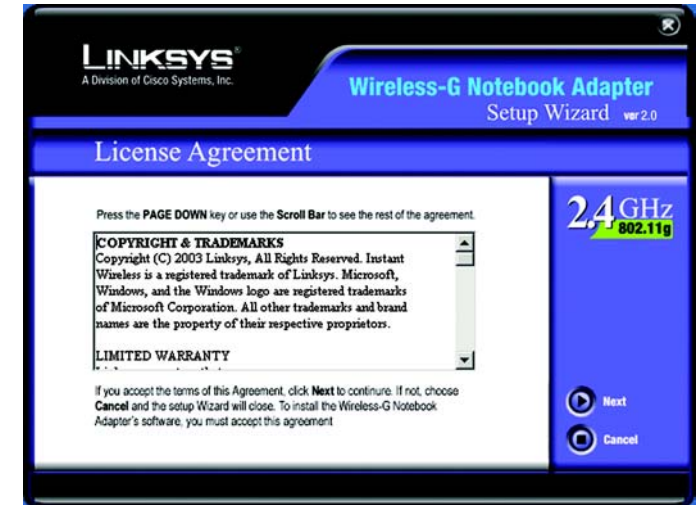


Figure 4-2: The Setup Wizard's License Agreement

3. The Setup Wizard will ask you to choose a network mode. Click the **Infrastructure Mode** radio button if you want your wireless computers to network with computers on your wired network using a wireless access point. Click the **Ad-Hoc Mode** radio button if you want multiple wireless computers to network directly with each other.

In the SSID field, enter the **SSID** of your wireless network. The SSID must be identical for all devices in the network. The default setting is **linksys** (all lowercase). Click the **Next** button.



**NOTE:** Network SSIDs should be unique to your network and identical for all devices within the network.

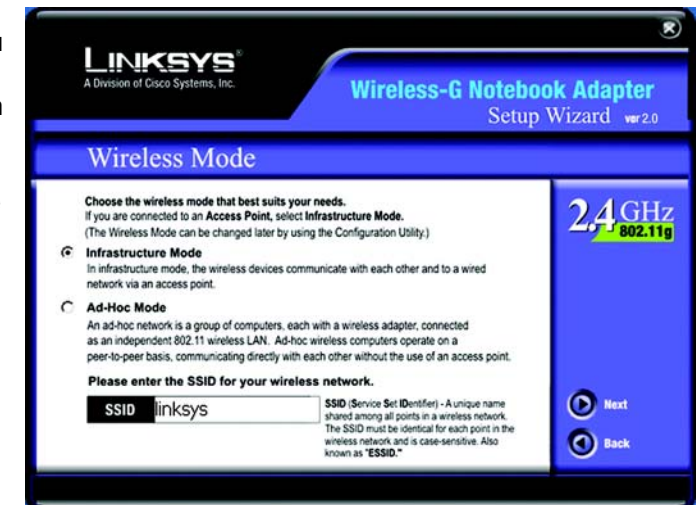


Figure 4-3: The Setup Wizard's Network Mode screen

4. If you chose **Infrastructure Mode**, go to Step 5 now. If you chose **Ad-Hoc Mode**, select the correct operating channel for your network. Then, select the Network Mode from the drop-down menu. Click the Next button, and go to Step 5. Click the Back button to change any settings.

**Channel** - The channel you choose should match the channel set on the other devices in your wireless network. If you are unsure about which channel to use, select the default channel.

**Network Mode** - Select **Mixed Mode**, and both **Wireless-G** and **Wireless-B** computers will be allowed on the network, but the speed will be reduced. Select **G-Only Mode** for maximum speed, but no **Wireless-B** users will be allowed on the network.

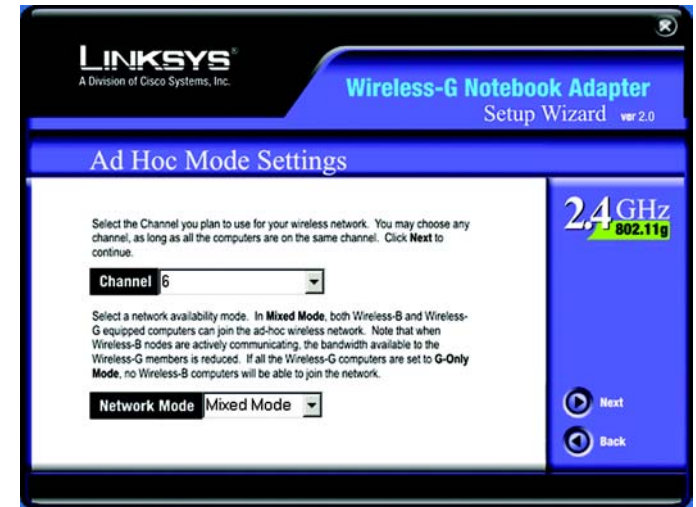


Figure 4-4: The Setup Wizard's Wireless Channels screen

5. The Setup Wizard will ask you to review your settings before it starts to copy files. Click the **Next** button to save these settings, or click the **Back** button to change any settings.

If you're using Windows 2000, you may see a Windows Digital Signature warning. As this product has been tested to work with Windows, you may continue.

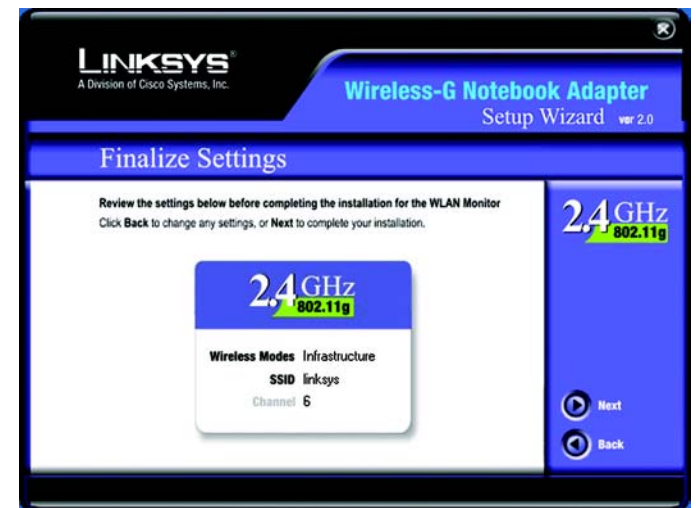


Figure 4-5: The Setup Wizard's Finalize Settings screen

6. After the software has been successfully installed, the Congratulations screen will appear. Click the Exit button.

Proceed to "Chapter 5: Hardware Installation."

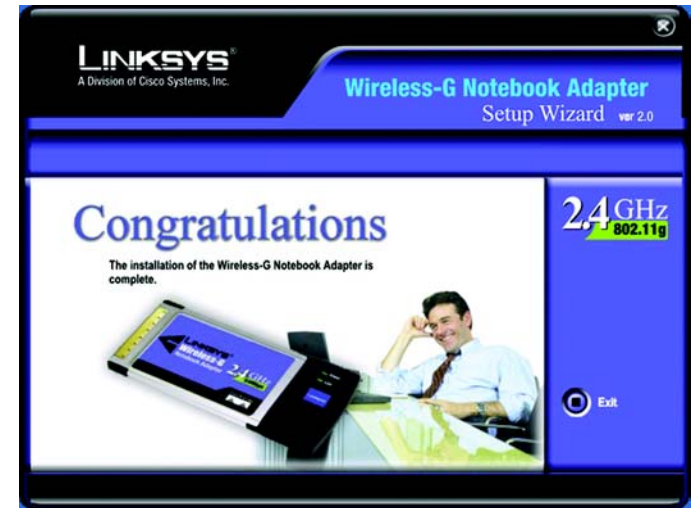


Figure 4-6: The Setup Wizard's Congratulations Screen

# Chapter 5: Hardware Installation



**NOTE:** You must run the Setup Wizard to install the software before installing the hardware.

## Connecting the Adapter

1. Turn off your notebook PC.
2. Locate an available CardBus slot on your notebook PC.
3. With the connector pin end facing the CardBus slot and the label facing up, as shown in Figure 5-1, slide the Adapter into the CardBus slot until it locks in place.
4. Restart your notebook PC. The Power LED should light up when the Adapter is installed correctly.
5. For Windows 2000, you may be informed that a digital signature has not been found. This is normal, and it has been verified that the Adapter does work with Windows 2000. Click **Yes** to continue.
6. Windows will begin copying the driver files to your computer. If Windows asks you for the original Windows CD-ROM, insert the CD-ROM, and direct Windows to its correct location (e.g., D:\).



**Figure 5-1: How the Adapter installs into your notebook**

**The installation of the Wireless-G Notebook Adapter is complete.**

**If you want to check the link information, search for available wireless networks, or make additional configuration changes, go to "Chapter 6: Using the WLAN Monitor."**



# Chapter 6: Using the WLAN Monitor

Use the WLAN Monitor to check the link information, search for available wireless networks, or create profiles that hold different configuration settings.

## Accessing the WLAN Monitor

After installing the Adapter, the Wireless-G Notebook Adapter WLAN Monitor icon will appear in your system tray. Double-click the icon.

The *Link Information* screen will appear. From this screen, you can find out how strong the current wireless signal is and how good the connection's quality is. You can also click the **More Information** button to view additional status information about the current wireless connection. To search for available wireless networks, click the **Site Survey** tab. To perform configuration changes, click the **Profiles** tab.

## Link Information

The Link Information screen displays network mode, signal strength, and link quality information about the current connection. It also provides a button to click for additional status information.

**Ad-Hoc Mode or Infrastructure Mode** - The screen indicates whether the Adapter is currently working in ad-hoc or infrastructure mode.

**Signal Strength** - The Signal Strength bar indicates signal strength, from 0 to 100%.

**Link Quality** - The Link Quality bar indicates the quality of the wireless network connection, from 0 to 100%.

Click the **More Information** button to view additional information about the wireless network connection. (Figure 6-3)

Click the X (Close) button in the upper right corner to exit the WLAN Monitor.

## Network Settings

The Networks Settings screen provides information on your current network settings.



Figure 6-1: The WLAN Monitor icon



Figure 6-2: Link Information

## Wireless-G Notebook Adapter

**State** - The status of the wireless network connection.

**SSID** - The SSID of the wireless network.

**Channel** - The channel to which the wireless network devices are set.

**Security**- The status of the security feature.

**Network Mode** - The wireless mode currently in use.

**IP Address** - The IP Address of the Adapter.

**Subnet Mask** - The Subnet Mask of the Adapter.

**Default Gateway** - The Default Gateway address of the Adapter.

**DNS** - The DNS address of the Adapter.

**MAC** - The MAC address of the wireless network's access point.

Click the **Statistics** button to go to the *Network Statistics* screen.

Click the **Back** button to return to the initial *Link Information* screen.

Click the **X** (Close) button in the upper right corner to exit the WLAN Monitor.



Figure 6-3: More Information-Network Settings

## Network Statistics

The Networks Statistics screen provides statistics on your current network settings.

**Transmit Rate** - The data transfer rate of the current connection.(In Auto mode, the Adapter dynamically shifts to the fastest data transfer rate possible at any given time.)

**Receive Rate** - The rate that data is received.

**Authentication** - The current security authentication mode.

**Network Mode** - The mode of the wireless network currently in use.

**Transmit Total** - The total number of packets being transmitted.

**Receive Total** - The total number of packets being received.

**Signal to Noise** - This tells you the quality of your signal. The higher the number, the better your signal.

Click the **Settings** button to go to the *Settings* screen.

Click the **Back** button to return to the initial *Link Information* screen.

Click the **X** (Close) button in the upper right corner to exit the WLAN Monitor.



Figure 6-4: More Information-Network Statistics

## Site Survey

The *Site Survey* screen displays a list of infrastructure and ad-hoc networks available for connection in the table on the right. This table shows the network's SSID, Channel, and the quality of the wireless signal the Adapter is receiving. You may click **SSID**, **Channel**, or **Signal**, to sort by that field.

### Site Information

For each network selected, the following settings are listed:

**Network Type** - The wireless mode currently in use.

**Channel** - The channel to which the wireless network devices are set.

**Encryption**- The status of the encryption security feature.

**MAC** - The MAC address of the wireless network's access point.

**Surveyed at** - The time when the wireless network was scanned.

**Refresh** - Click the Refresh button to perform a new search for wireless devices.

**Connect** - To connect to one of the networks on the list, select the wireless network, and click the Connect button.

Click the X (Close) button in the upper right corner to exit the WLAN Monitor.

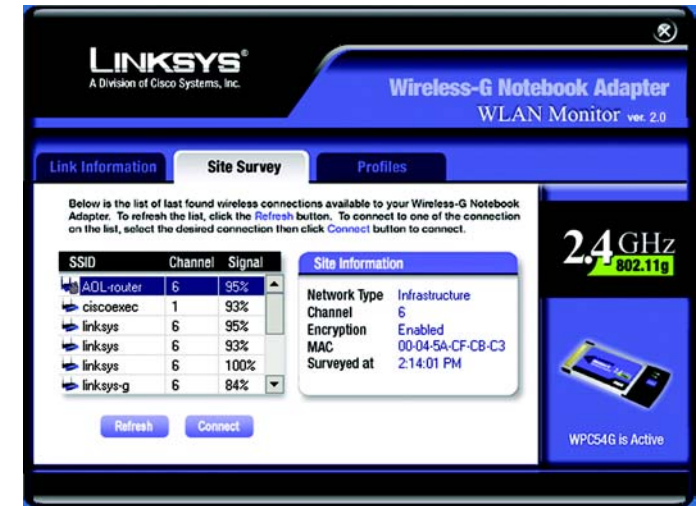


Figure 6-5: Site Survey

## Profiles

The *Profiles* screen lets you save different configuration profiles for different network setups. The table on the right displays a list of infrastructure and ad-hoc networks available for connection. This table shows the network's profile name and the wireless network's SSID, as set in the connection profile.

### Profile Information

For each profile selected, the following are listed:

**Network Mode** - The mode of the wireless network currently in use.

**Transfer Rate** - The Adapter is set to Auto mode, so it will dynamically shift to the fastest data transfer rate possible at any given time.

**Channel** - The channel to which the wireless network devices are set.

**Encryption**- The status of the encryption security feature.

**Connect** - To connect to a wireless network using a specific profile, select the profile, and click the **Connect** button.

**Edit** - Select a profile, and click the **Edit** button to change an existing profile.

**New** - Click the **New** button to create a new profile. See the next section, "Creating a New Profile," for detailed instructions.

**Import** - Click the **Import** button to import a profile that has been saved in another location. Select the appropriate file, and click the **Open** button.

**Export** - Select the profile you want to save in a different location, and click the **Export** button. Direct Windows to the appropriate folder, and click the **OK** button.

**Delete** - Click the **Delete** button to delete a profile.

Click the **X** (Close) button in the upper right corner to exit the WLAN Monitor.

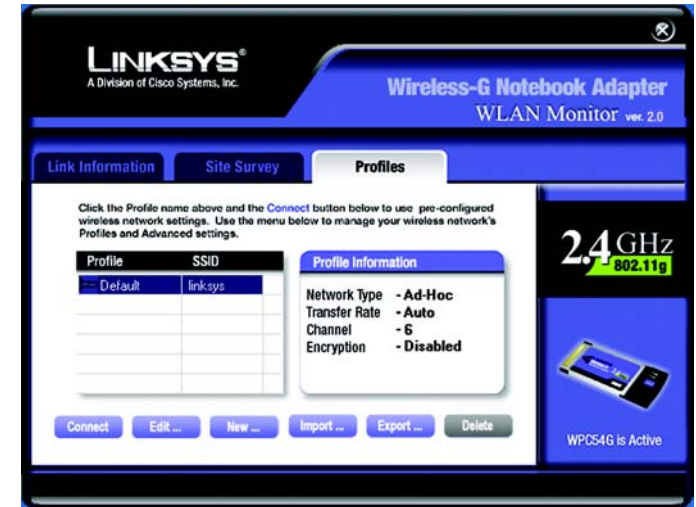


Figure 6-6: Profiles

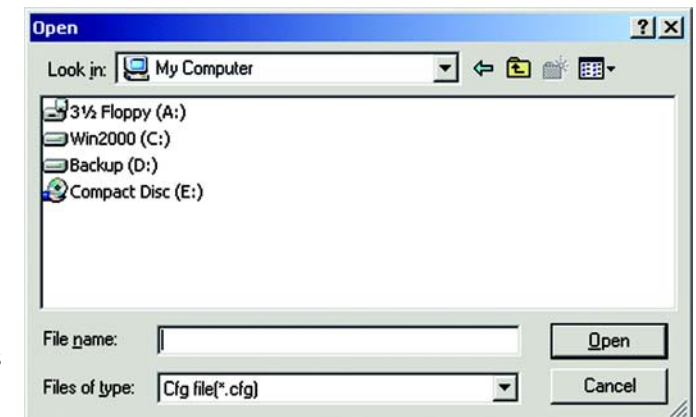


Figure 6-7: Importing a Profile



**NOTE:** If you want to export more than one profile, you have to export them one at a time.

## Creating a New Profile

1. On the *Profiles* screen, click the **New** button to create a new profile.
2. Enter a name for the new profile, and click the **OK** button. Click the **Cancel** button to return to the Profiles screen without entering a name.



Figure 6-8: Exporting a Profile

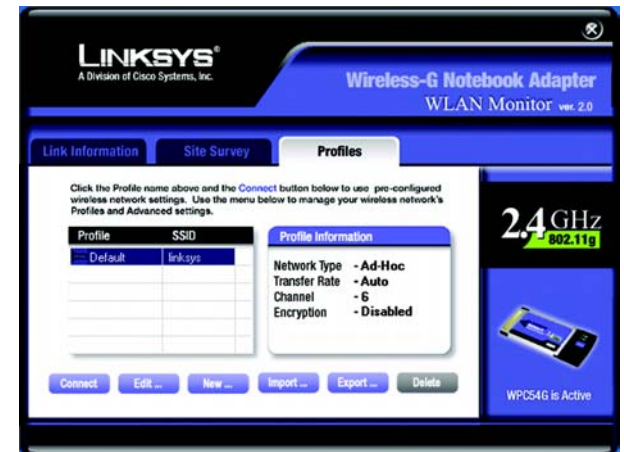


Figure 6-9: Creating a New Profile



Figure 6-10: Enter Profile Name

- The *Choose a network type* screen shows a choice of two wireless modes. Click the **Infrastructure Mode** radio button if you want your wireless computers to communicate with computers on your wired network via a wireless access point. Click the **Ad-Hoc Mode** radio button if you want multiple wireless computers to communicate directly with each other. Enter the SSID for your network.

Click the **Next** button to continue or the **Back** button to return to the previous screen.

**Infrastructure Mode** - This mode allows wireless and wired networks to communicate through an access point.

**Ad-Hoc Mode** - This mode allows wireless-equipped computers to communicate directly with each other. No access point is used.

**SSID** - The network name. It must be used for all the devices in your wireless network. It is case sensitive. It should be a unique name to help prevent others from entering your network.

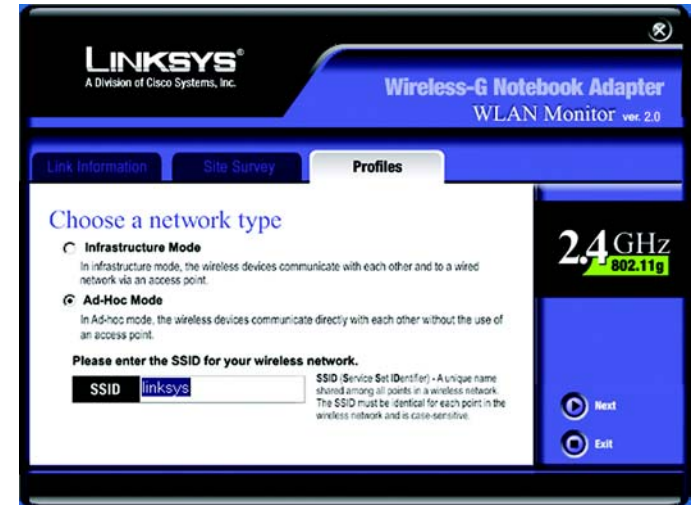


Figure 6-11: Choose a network type

- The *Wireless Settings* screen will appear. If you chose Infrastructure Mode, go to Step 5 now. If you chose Ad-Hoc Mode, select the correct operating channel for your network from the Channel drop-down menu. Then, select the Network Mode from the drop-down menu. Click the **Next** button, and go to Step 5. Click the **Back** button to change any settings.

**Channel** - The channel you choose should match the channel set on the other devices in your wireless network. If you are unsure about which channel to use, select the default channel.

**Network Mode** - Select Mixed Mode, and both Wireless-G and Wireless-B computers will be allowed on the network, but the speed may be reduced. Select G-Only Mode for maximum speed, but no Wireless-B users will be allowed on the network. Select B-Only Mode for Wireless-B users only.



Figure 6-12: Wireless Settings for New Profile

- The *Network Setting* screen will appear next. If your network has a DHCP server, click the radio button next to **Obtain an IP address automatically (DHCP)**. Click the **Next** button to continue, or click the **Cancel** button to return to the *Profiles* screen.

If your network does not have a DHCP server, click the radio button next to **Specify the IP Setting**. Enter an IP Address, Subnet Mask, Default Gateway, and DNS appropriate for your network. You must specify the IP Address and Subnet Mask on this screen. If you are unsure about the Default Gateway and DNS address, leave these fields empty. Click the **Next** button to continue, or click the **Cancel** button to return to the *Profiles* screen.

IP Address - This IP Address must be unique to your network.

Subnet Mask - The Adapter's Subnet Mask must be the same as your wired network's Subnet Mask.

Default Gateway - Enter the IP address of your network's Gateway here.

DNS 1 and DNS 2 - Enter the DNS address of your (wired) Ethernet network here

- The *Security Setting* screen will appear. Select WEP, WPA-PSK, WPA Radius, or Radius for the Encryption Method. WEP stands for Wired Equivalent Privacy, WPA-PSK stands for Wi-Fi Protected Access Pre-Shared Key, which is a security standard stronger than WEP encryption, and RADIUS stands for Remote Authentication Dial-In User Service. If you don't want to use encryption, select **Disabled**. Then, click the **Next** button to continue or the **Back** button to return to the previous screen.

### WEP

**WEP** - To use WEP encryption, select 64-bits or 128-bit characters from the drop-down menu, and enter a passphrase or key.

**Authentication** -The default is set to **Auto**, where it auto-detects for **Shared Key** or **Open** system. Shared Key is when both the sender and the recipient share a WEP key for authentication. Open key is when the sender and the recipient do not share a WEP key for authentication. All points on your network must use the same authentication type.

**Passphrase** - Instead of manually entering a WEP key, you can enter a passphrase in the Passphrase field, so a WEP key is automatically generated. It is case-sensitive and should not be longer than 16 alphanumeric characters. This passphrase must match the passphrase of your other wireless network devices and is compatible with Linksys wireless products only. (If you have any non-Linksys wireless products, enter the WEP key manually on those products.)

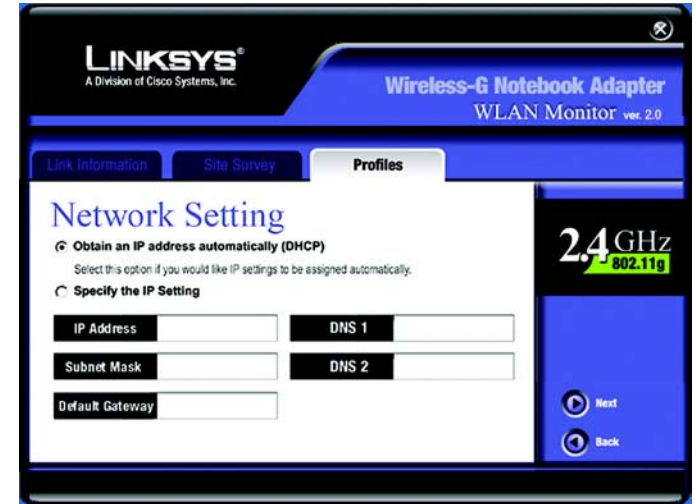


Figure 6-13: Network Setting for New Profile



Figure 6-14: Security Setting for New Profile



**Transmit Key** - The default transmit key number is 1. If your network's access point or wireless router uses transmit key number 2, 3, or 4, select the appropriate number from the *Transmit Key* drop-down box.

**Key 1**- The WEP key you enter must match the WEP key of your wireless network. If you are using 64-bit WEP encryption, then the key must consist of exactly 10 hexadecimal characters. If you are using 128-bit WEP encryption, then the key must consist of exactly 26 hexadecimal characters. Valid hexadecimal characters are "0" to "9" and "A" to "F".

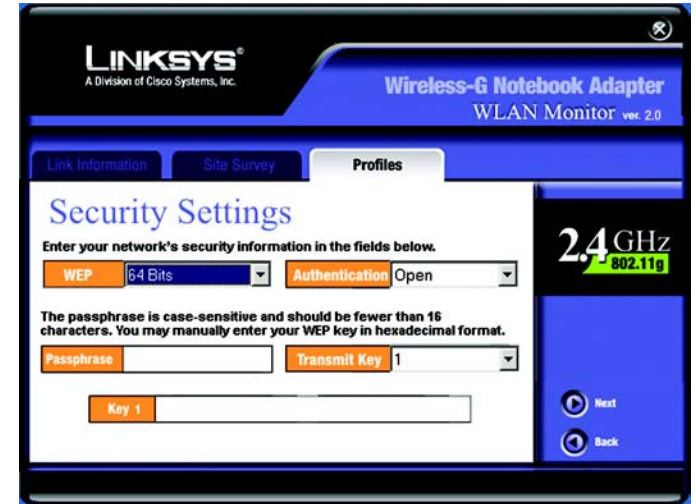


Figure 6-15: WEP Settings

### WPA-PSK

WPA-PSK, Wi-Fi Protected Access-Pre-Shared Key, offers two encryption methods, TKIP and AES, with dynamic encryption keys. Click the **Next** button to continue and the screen in Figure 6-17 appears. Click the **Back** button to return to the previous screen.



Figure 6-16: WPA-PSK Settings

Select the type of algorithm, **TKIP** or **AES**, for the *Encryption Type*. Enter a WPA Shared Key of 8-63 characters in the *Passphrase* field.



Figure 6-17: TKIP Settings

### WPA RADIUS.

WPA RADIUS features WPA used in coordination with a RADIUS server. (This should only be used when a RADIUS server is connected to the Router.) WPA Radius offers two encryption methods, TKIP and AES, with dynamic encryption keys. It offers five authentication methods: EAP-TLS, EAP-TTLS, EAP-MD5, EAP-PEAP, and LEAP.

Click the **Next** button to continue and the screen in Figure 6-19 appears. Click the **Back** button to return to the previous screen.

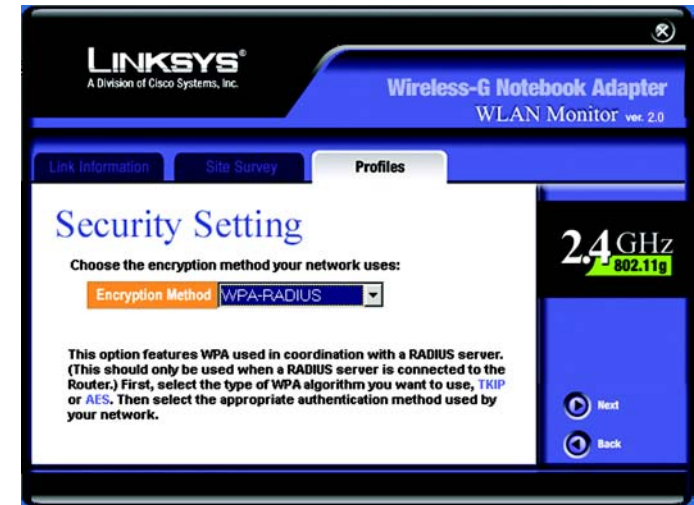


Figure 6-18: WPA RADIUS Settings

Select the type of algorithm, **TKIP** or **AES**, for the *Encryption Type*.

Click the **Next** button to continue. Click the **Back** button to return to the previous screen.



Figure 6-19: TKIP Settings

The screen in Figure 6-20 appears next. Select the *Authentication Method* from the drop-down menu. The options are described below.

### EAP-TLS

Enter the Login name of your wireless network in the *Login Name* field. From the *Certificate* drop-down menu, select the certificate you have installed to authenticate you on your wireless network. Select **Validate server certificate** to make sure that the certificate for the server is valid.

Click the **Next** button to continue. Click the **Back** button to return to the previous screen.



Figure 6-20: EAP-TLS Authentication

### EAP-TTLS

Enter the Login name of your wireless network in the *Login Name* field. Enter the password of your wireless network in the *Password* field. Select **Validate server certificate** to make sure that the certificate for the server is valid. Select the *TTLS Protocol* from the drop-down menu.

Click the **Next** button to continue. Click the **Back** button to return to the previous screen.



Figure 6-21: EAP-TTLS Authentication

### EAP-MD5

Enter the Login name of your wireless network in the *Login Name* field. Enter the password of your wireless network in the *Password* field.

Click the **Next** button to continue. Click the **Back** button to return to the previous screen.

### EAP-PEAP

Enter the Login name of your wireless network in the *Login Name* field. Enter the password of your wireless network in the *Password* field. Select **Validate server certificate** to make sure that the certificate for the server is valid. Then, select the *Peap Inner Eap* from the drop-down menu.

Click the **Next** button to continue. Click the **Back** button to return to the previous screen.

### LEAP

Enter the Login name of your wireless network in the *Login Name* field. Enter the password of your wireless network in the *Password* field.

Click the **Next** button to continue. Click the **Back** button to return to the previous screen.



Figure 6-22: EAP-MD5 Authentication



Figure 6-23: EAP-PEAP Authentication



Figure 6-24: EAP-LEAP Authentication

## RADIUS

RADIUS features WPA used in coordination with a RADIUS server. (This should only be used when a RADIUS server is connected to the Router.) It offers five authentication methods: EAP-TLS, EAP-TTLS, EAP-MD5, EAP-PEAP, and LEAP.

Click the **Next** button to continue and the screen in Figure 6-19 appears. Click the **Back** button to return to the previous screen.

The screen in Figure 6-26 appears next. Select the *Authentication Method* from the drop-down menu. The options are described below.

## EAP-TLS

Enter the Login name of your wireless network in the *Login Name* field. From the *Certificate* drop-down menu, select the certificate you have installed to authenticate you on your wireless network. Select **Validate server certificate** to make sure that the certificate for the server is valid.

Click the **Next** button to continue. Click the **Back** button to return to the previous screen.



Figure 6-25: RADIUS Settings



Figure 6-26: EAP-TLS Authentication

### EAP-TTLS

Enter the Login name of your wireless network in the *Login Name* field. Enter the password of your wireless network in the *Password* field. Select **Validate server certificate** to make sure that the certificate for the server is valid. Select the *TLS Protocol* from the drop-down menu.

Click the **Next** button to continue. Click the **Back** button to return to the previous screen.



Figure 6-27: EAP-TTLS Authentication

### EAP-MD5

Enter the Login name of your wireless network in the *Login Name* field. Enter the password of your wireless network in the *Password* field.

Click the **Next** button to continue. Click the **Back** button to return to the previous screen.



Figure 6-28: EAP-MD5 Authentication

### EAP-PEAP

Enter the Login name of your wireless network in the *Login Name* field. Enter the password of your wireless network in the *Password* field. Select **Validate server certificate** to make sure that the certificate for the server is valid. Then, select the *Peap Inner EAP* from the drop-down menu.

Click the **Next** button to continue. Click the **Back** button to return to the previous screen.

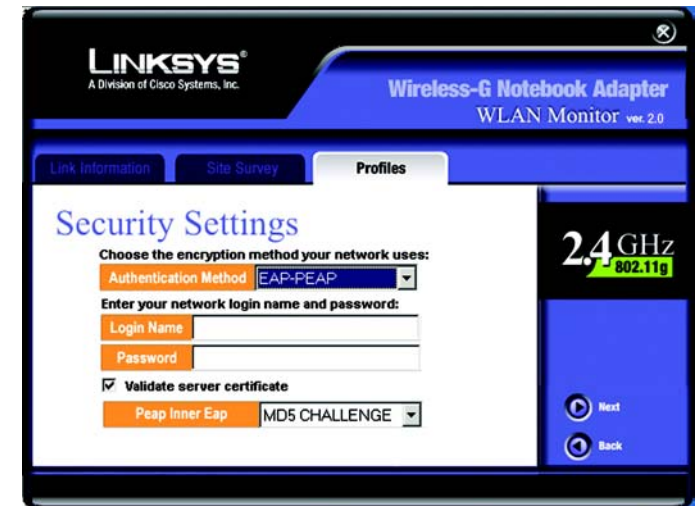


Figure 6-29: EAP-PEAP Authentication

### LEAP

Enter the Login name of your wireless network in the *Login Name* field. Enter the password of your wireless network in the *Password* field.

Click the **Next** button to continue. Click the **Back** button to return to the previous screen.



Figure 6-30: LEAP Authentication



7. The *Confirm New Settings* screen will appear next showing the new settings. To save the new settings, click the **Yes** button. To edit the new settings, click the **Back** button.



Figure 6-31: Confirm New Settings for New Profile

8. The *Congratulations* screen will appear next. Click **Activate new settings now** to implement the new settings immediately and return to the *Link Information* screen. Click **Activate new settings later** to keep the current settings active and return to the *Profiles* screen.

You have successfully created a connection profile.

Click the X (Close) button in the upper right corner to exit the WLAN Monitor.



Figure 6-32: Congratulations for New Profile

# Appendix A: Troubleshooting

This appendix consists of two parts: “Common Problems and Solutions” and “Frequently Asked Questions.” This appendix provides solutions to problems that may occur during the installation and operation of the Wireless-G Notebook Adapter. Read the description below to solve your problems. If you can't find an answer here, check the Linksys website at [www.linksys.com/international](http://www.linksys.com/international).

## Common Problems and Solutions

**1. *My computer does not recognize the Wireless-G Notebook Adapter.***

Make sure that the Wireless-G Notebook Adapter is properly inserted into the PC Card slot.

**2. *The Wireless-G Notebook Adapter does not work properly.***

Reinsert the Wireless-G Notebook Adapter into the notebook or desktop's USB port.

For Windows 98SE or Me, right-click on **My Computer**, and select **Properties**. Select the **Device Manager** tab, and click on the **Network Adapter**. You will find the Wireless-G Notebook Adapter if it is installed successfully. If you see a yellow exclamation mark, the resources may be conflicting and you must follow the steps below:

- Uninstall the driver software from your PC.
- Restart your PC and repeat the hardware and software installation as specified in this User Guide.

**3. *I cannot communicate with the other computers linked via Ethernet in the Infrastructure configuration.***

Make sure that the notebook or desktop is powered on.

Make sure that the Wireless-G Notebook Adapter is configured with the same SSID and security settings as the other computers in the Infrastructure configuration.

## Frequently Asked Questions

### ***Can I run an application from a remote computer over the wireless network?***

This will depend on whether or not the application is designed to be used over a network. Consult the application's user guide to determine if it supports operation over a network.

### ***Can I play computer games with other members of the wireless network?***

Yes, as long as the game supports multiple players over a LAN (local area network). Refer to the game's user guide for more information.

### ***What is the IEEE 802.11b standard?***

It is one of the IEEE standards for wireless networks. The 802.11b standard allows wireless networking hardware from different manufacturers to communicate, provided that the hardware complies with the 802.11b standard. The 802.11b standard states a maximum data transfer rate of 11Mbps and an operating frequency of 2.4GHz.

### ***What is the IEEE 802.11g standard?***

It is one of the IEEE standards for wireless networks. The 802.11g standard allows wireless networking hardware from different manufacturers to communicate, provided that the hardware complies with the 802.11g standard. The 802.11g standard states a maximum data transfer rate of 54Mbps and an operating frequency of 2.4GHz.

### ***What IEEE 802.11b features are supported?***

The product supports the following IEEE 802.11b functions:

- CSMA/CA plus Acknowledge protocol
- Multi-Channel Roaming
- Automatic Rate Selection
- RTS/CTS feature
- Fragmentation
- Power Management

### ***What IEEE 802.11g features are supported?***

The product supports the following IEEE 802.11g functions:

- CSMA/CA plus Acknowledge protocol
- OFDM protocol
- Multi-Channel Roaming
- Automatic Rate Selection
- RTS/CTS feature
- Fragmentation
- Power Management

***mbps: one million bits per second; a unit of measurement for data transmission.***

***fragmentation: breaking a packet into smaller units when transmitting over a network medium that cannot support the original size of the packet.***

***What is ad-hoc mode?***

When a wireless network is set to ad-hoc mode, the wireless-equipped computers are configured to communicate directly with each other. The ad-hoc wireless network will not communicate with any wired network.

***What is infrastructure mode?***

When a wireless network is set to infrastructure mode, the wireless network is configured to communicate with a wired network through a wireless access point.

***What is roaming?***

Roaming is the ability of a portable computer user to communicate continuously while moving freely throughout an area greater than that covered by a single access point. Before using the roaming function, the workstation must make sure that it is the same channel number with the access point of dedicated coverage area.

To achieve true seamless connectivity, the wireless LAN must incorporate a number of different functions. Each node and access point, for example, must always acknowledge receipt of each message. Each node must maintain contact with the wireless network even when not actually transmitting data. Achieving these functions simultaneously requires a dynamic RF networking technology that links access points and nodes. In such a system, the user's end node undertakes a search for the best possible access to the system. First, it evaluates such factors as signal strength and quality, as well as the message load currently being carried by each access point and the distance of each access point to the wired backbone. Based on that information, the node next selects the right access point and registers its address. Communications between end node and host computer can then be transmitted up and down the backbone.

As the user moves on, the end node's RF transmitter regularly checks the system to determine whether it is in touch with the original access point or whether it should seek a new one. When a node no longer receives acknowledgment from its original access point, it undertakes a new search. Upon finding a new access point, it then re-registers, and the communication process continues.

***What is ISM band?***

The FCC and their counterparts outside of the U.S. have set aside bandwidth for unlicensed use in the ISM (Industrial, Scientific and Medical) band. Spectrum in the vicinity of 2.4 GHz, in particular, is being made available worldwide. This presents a truly revolutionary opportunity to place convenient high-speed wireless capabilities in the hands of users around the globe.

***ism band:*** radio bandwidth utilized in wireless transmissions.

***What is Spread Spectrum?***

Spread Spectrum technology is a wideband radio frequency technique developed by the military for use in reliable, secure, mission-critical communications systems. It is designed to trade off bandwidth efficiency for reliability, integrity, and security. In other words, more bandwidth is consumed than in the case of narrowband transmission, but the trade-off produces a signal that is, in effect, louder and thus easier to detect, provided that

***spread spectrum:*** wideband radio frequency technique used for more reliable and secure data transmission.

the receiver knows the parameters of the spread-spectrum signal being broadcast. If a receiver is not tuned to the right frequency, a spread-spectrum signal looks like background noise. There are two main alternatives, Direct Sequence Spread Spectrum (DSSS) and Frequency Hopping Spread Spectrum (FHSS).

***What is DSSS? What is FHSS? And what are their differences?***

Frequency-Hopping Spread-Spectrum (FHSS) uses a narrowband carrier that changes frequency in a pattern that is known to both transmitter and receiver. Properly synchronized, the net effect is to maintain a single logical channel. To an unintended receiver, FHSS appears to be short-duration impulse noise. Direct-Sequence Spread-Spectrum (DSSS) generates a redundant bit pattern for each bit to be transmitted. This bit pattern is called a chip (or chipping code). The longer the chip, the greater the probability that the original data can be recovered. Even if one or more bits in the chip are damaged during transmission, statistical techniques embedded in the radio can recover the original data without the need for retransmission. To an unintended receiver, DSSS appears as low power wideband noise and is rejected (ignored) by most narrowband receivers.

***Would the information be intercepted while transmitting on air?***

WLAN features two-fold protection in security. On the hardware side, as with Direct Sequence Spread Spectrum technology, it has the inherent security feature of scrambling. On the software side, WLAN offers the encryption function (WEP) to enhance security and access control.

***What is WEP?***

WEP is Wired Equivalent Privacy, a data privacy mechanism based on a shared key algorithm, as described in the IEEE 802.11 standard.

***dsss: Frequency transmission with a redundant bit pattern resulting in a lower probability of information being lost in transit.***

# Appendix B: Wireless Security

Linksys wants to make wireless networking as safe and easy for you as possible. The current generation of Linksys products provide several network security features, but they require specific action on your part for implementation. So, keep the following in mind whenever you are setting up or using your wireless network.

## Security Precautions

The following is a complete list of security precautions to take (at least steps 1 through 5 should be followed):

1. Change the default SSID.
2. Disable SSID Broadcast.
3. Change the default password for the Administrator account.
4. Enable MAC Address Filtering.
5. Change the SSID periodically.
6. Use the highest encryption algorithm possible. Use WPA if it is available. Please note that this may reduce your network performance.
7. Change the WEP encryption keys periodically.



**Note:** Some of these security features are available only through the network router or access point. Refer to the router or access point's documentation for more information.

## Security Threats Facing Wireless Networks

Wireless networks are easy to find. Hackers know that in order to join a wireless network, wireless networking products first listen for "beacon messages". These messages can be easily decrypted and contain much of the network's information, such as the network's SSID (Service Set Identifier). Here are the steps you can take:

**Change the administrator's password regularly.** With every wireless networking device you use, keep in mind that network settings (SSID, WEP keys, etc.) are stored in its firmware. Your network administrator is the only person who can change network settings. If a hacker gets a hold of the administrator's password, he, too, can change those settings. So, make it harder for a hacker to get that information. Change the administrator's password regularly.

**SSID.** There are several things to keep in mind about the SSID:

## Wireless-G Notebook Adapter

1. Disable Broadcast
2. Make it unique
3. Change it often

Most wireless networking devices will give you the option of broadcasting the SSID. While this option may be more convenient, it allows anyone to log into your wireless network. This includes hackers. So, don't broadcast the SSID.

Wireless networking products come with a default SSID set by the factory. (The Linksys default SSID is "linksys".) Hackers know these defaults and can check these against your network. Change your SSID to something unique and not something related to your company or the networking products you use.

Change your SSID regularly so that any hackers who have gained access to your wireless network will have to start from the beginning in trying to break in.

**MAC Addresses.** Enable MAC Address filtering. MAC Address filtering will allow you to provide access to only those wireless nodes with certain MAC Addresses. This makes it harder for a hacker to access your network with a random MAC Address.

**WEP Encryption.** Wired Equivalent Privacy (WEP) is often looked upon as a cure-all for wireless security concerns. This is overstating WEP's ability. Again, this can only provide enough security to make a hacker's job more difficult.

There are several ways that WEP can be maximized:

1. Use the highest level of encryption possible
2. Use "Shared Key" authentication
3. Change your WEP key regularly

**WPA.** Wi-Fi Protected Access (WPA) is the newest and best available standard in Wi-Fi security. Three modes are available: Radius-PSK, WPA Radius, and Radius. Radius-PSK gives you a choice of two encryption methods: TKIP (Temporal Key Integrity Protocol), which utilizes a stronger encryption method and incorporates Message Integrity Code (MIC) to provide protection against hackers, and AES (Advanced Encryption System), which utilizes a symmetric 128-Bit block data encryption. WPA RADIUS offers two encryption methods, TKIP and AES, with dynamic encryption keys. RADIUS (Remote Authentication Dial-In User Service) utilizes a RADIUS server for authentication.



**Important:** Always remember that each device in your wireless network **MUST** use the same encryption method and encryption key or your wireless network will not function properly.

## Wireless-G Notebook Adapter

**WPA-PSK.** If you do not have a RADIUS server, Select the type of algorithm, TKIP or AES, and enter a password in the Passphrase field of 8-63 characters.

**WPA RADIUS.** WPA used in coordination with a RADIUS server. (This should only be used when a RADIUS server is connected to the Router or other device.) WPA Radius offers two encryption methods, TKIP and AES, with dynamic encryption keys.

**RADIUS.** WEP used in coordination with a RADIUS server. (This should only be used when a RADIUS server is connected to the Router or other device.)

Implementing encryption may have a negative impact on your network's performance, but if you are transmitting sensitive data over your network, encryption should be used.

These security recommendations should help keep your mind at ease while you are enjoying the most flexible and convenient technology Linksys has to offer.



# Appendix C: Windows Help

All wireless products require Microsoft Windows. Windows is the most used operating system in the world and comes with many features that help make networking easier. These features can be accessed through Windows Help and are described in this appendix.

## TCP/IP

Before a computer can communicate with an access point or wireless router, TCP/IP must be enabled. TCP/IP is a set of instructions, or protocol, all PCs follow to communicate over a network. This is true for wireless networks as well. Your PCs will not be able to utilize wireless networking without having TCP/IP enabled. Windows Help provides complete instructions on enabling TCP/IP.

## Shared Resources

If you wish to share printers, folder, or files over your network, Windows Help provides complete instructions on utilizing shared resources.

## Network Neighborhood/My Network Places

Other PCs on your network will appear under Network Neighborhood or My Network Places (depending upon the version of Windows you're running). Windows Help provides complete instructions on adding PCs to your network.

# Appendix D: Glossary

**802.11b** - A wireless networking standard that specifies a maximum data transfer rate of 11Mbps and an operating frequency of 2.4GHz.

**802.11g** - A wireless networking standard that specifies a maximum data transfer rate of 54Mbps, an operating frequency of 2.4GHz, and backward compatibility with 802.11b devices.

**Access Point** - A device that allows wireless-equipped computers and other devices to communicate with a wired network. Also used to expand the range of a wireless network.

**Adapter** - A device that adds network functionality to your PC.

**Ad-hoc** - A group of wireless devices communicating directly with each other (peer-to-peer) without the use of an access point.

**AES (Advanced Encryption Standard)** - A security method that uses symmetric 128-bit block data encryption.

**Backbone** - The part of a network that connects most of the systems and networks together, and handles the most data.

**Bandwidth** - The transmission capacity of a given device or network.

**Beacon Interval** - Data transmitted on your wireless network that keeps the network synchronized.

**Bit** - A binary digit.

**Boot** - To start a device and cause it to start executing instructions.

**Bridge** - A device that connects different networks.

**Broadband** - An always-on, fast Internet connection.

**Browser** - An application program that provides a way to look at and interact with all the information on the World Wide Web.

**Buffer** - A shared or assigned memory area that is used to support and coordinate different computing and networking activities so one isn't held up by the other.

**Byte** - A unit of data that is usually eight bits long

## Wireless-G Notebook Adapter

**Cable Modem** - A device that connects a computer to the cable television network, which in turn connects to the Internet.

**CSMA/CA (Carrier Sense Multiple Access/Collision Avoidance)** - A method of data transfer that is used to prevent data collisions.

**CTS (Clear To Send)** - A signal sent by a wireless device, signifying that it is ready to receive data.

**Daisy Chain** - A method used to connect devices in a series, one after the other.

**Database** - A collection of data that is organized so that its contents can easily be accessed, managed, and updated.

**DDNS (Dynamic Domain Name System)** - Allows the hosting of a website, FTP server, or e-mail server with a fixed domain name (e.g., www.xyz.com) and a dynamic IP address.

**Default Gateway** - A device that forwards Internet traffic from your local area network.

**DHCP (Dynamic Host Configuration Protocol)** - A networking protocol that allows administrators to assign temporary IP addresses to network computers by "leasing" an IP address to a user for a limited amount of time, instead of assigning permanent IP addresses.

**DMZ (Demilitarized Zone)** - Removes the Router's firewall protection from one PC, allowing it to be "seen" from the Internet.

**DNS (Domain Name Server)** - The IP address of your ISP's server, which translates the names of websites into IP addresses.

**Domain** - A specific name for a network of computers.

**Download** - To receive a file transmitted over a network.

**DSL (Digital Subscriber Line)** - An always-on broadband connection over traditional phone lines.

**DSSS (Direct-Sequence Spread-Spectrum)** - Frequency transmission with a redundant bit pattern resulting in a lower probability of information being lost in transit.

**DTIM (Delivery Traffic Indication Message)** - A message included in data packets that can increase wireless efficiency.

**Dynamic IP Address** - A temporary IP address assigned by a DHCP server.

**EAP (Extensible Authentication Protocol)** - A general authentication protocol used to control network access. Many specific authentication methods work within this framework.

**EAP-PEAP (Extensible Authentication Protocol-Protected Extensible Authentication Protocol)** - A mutual authentication method that uses a combination of digital certificates and another system, such as passwords.

**EAP-TLS (Extensible Authentication Protocol-Transport Layer Security)** - A mutual authentication method that uses digital certificates.

**Encryption** - Encoding data transmitted in a network.

**Ethernet** - A networking protocol that specifies how data is placed on and retrieved from a common transmission medium.

**Finger** - A program that tells you the name associated with an e-mail address.

**Firewall** - A set of related programs located at a network gateway server that protects the resources of a network from users from other networks.

**Firmware** - The programming code that runs a networking device.

**Fragmentation** - Breaking a packet into smaller units when transmitting over a network medium that cannot support the original size of the packet.

**FTP (File Transfer Protocol)** - A protocol used to transfer files over a TCP/IP network.

**Full Duplex** - The ability of a networking device to receive and transmit data simultaneously.

**Gateway** - A device that interconnects networks with different, incompatible communications protocols.

**Half Duplex** - Data transmission that can occur in two directions over a single line, but only one direction at a time.

**Hardware** - The physical aspect of computers, telecommunications, and other information technology devices.

**HTTP (HyperText Transport Protocol)** - The communications protocol used to connect to servers on the World Wide Web.

**Infrastructure** - A wireless network that is bridged to a wired network via an access point.

**IP (Internet Protocol)** - A protocol used to send data over a network.

**IP Address** - The address used to identify a computer or device on a network.

## Wireless-G Notebook Adapter

**IPCONFIG** - A Windows 2000 and XP utility that displays the IP address for a particular networking device.

**IPSec (Internet Protocol Security)** - A VPN protocol used to implement secure exchange of packets at the IP layer.

**ISM band** - Radio bandwidth utilized in wireless transmissions.

**ISP (Internet Service Provider)** - A company that provides access to the Internet.

**LAN** - The computers and networking products that make up your local network.

**LEAP (Lightweight Extensible Authentication Protocol)** - A mutual authentication method that uses a username and password system.

**MAC (Media Access Control) Address** - The unique address that a manufacturer assigns to each networking device.

**Mbps (MegaBits Per Second)** - One million bits per second; a unit of measurement for data transmission.

**mIRC** - An Internet Relay Chat program that runs under Windows.

**Multicasting** - Sending data to a group of destinations at once.

**NAT (Network Address Translation)** - NAT technology translates IP addresses of a local area network to a different IP address for the Internet.

**Network** - A series of computers or devices connected for the purpose of data sharing, storage, and/or transmission between users.

**NNTP (Network News Transfer Protocol)** - The protocol used to connect to Usenet groups on the Internet.

**Node** - A network junction or connection point, typically a computer or work station.

**OFDM (Orthogonal Frequency Division Multiplexing)** - Frequency transmission that separates the data stream into a number of lower-speed data streams, which are then transmitted in parallel to prevent information from being lost in transit.

**Packet** - A unit of data sent over a network.

**Passphrase** - Used much like a password, a passphrase simplifies the WEP encryption process by automatically generating the WEP encryption keys for Linksys products.

**Ping (Packet INternet Groper)** - An Internet utility used to determine whether a particular IP address is online.

**POP3 (Post Office Protocol 3)** - A standard mail server commonly used on the Internet.

**Port** - The connection point on a computer or networking device used for plugging in cables or adapters.

**Power over Ethernet (PoE)** - A technology enabling an Ethernet network cable to deliver both data and power.

**PPPoE (Point to Point Protocol over Ethernet)** - A type of broadband connection that provides authentication (username and password) in addition to data transport.

**PPTP (Point-to-Point Tunneling Protocol)** - A VPN protocol that allows the Point to Point Protocol (PPP) to be tunneled through an IP network. This protocol is also used as a type of broadband connection in Europe.

**Preamble** - Part of the wireless signal that synchronizes network traffic.

**RADIUS (Remote Authentication Dial-In User Service)** - A protocol that uses an authentication server to control network access.

**RJ-45 (Registered Jack-45)** - An Ethernet connector that holds up to eight wires.

**Roaming** - The ability to take a wireless device from one access point's range to another without losing the connection.

**Router** - A networking device that connects multiple networks together.

**RTS (Request To Send)** - A networking method of coordinating large packets through the RTS Threshold setting.

**Server** - Any computer whose function in a network is to provide user access to files, printing, communications, and other services.

**SMTP (Simple Mail Transfer Protocol)** - The standard e-mail protocol on the Internet.

**SNMP (Simple Network Management Protocol)** - A widely used network monitoring and control protocol.

**Software** - Instructions for the computer. A series of instructions that performs a particular task is called a "program".

**SOHO (Small Office/Home Office)** - Market segment of professionals who work at home or in small offices.

**SPI (Stateful Packet Inspection) Firewall** - A technology that inspects incoming packets of information before allowing them to enter the network.

**Spread Spectrum** - Wideband radio frequency technique used for more reliable and secure data transmission.

## Wireless-G Notebook Adapter

**SSID (Service Set Identifier)** - Your wireless network's name.

**Static IP Address** - A fixed address assigned to a computer or device that is connected to a network.

**Static Routing** - Forwarding data in a network via a fixed path.

**Subnet Mask** - An address code that determines the size of the network.

**Switch** - 1. A data switch that connects computing devices to host computers, allowing a large number of devices to share a limited number of ports. 2. A device for making, breaking, or changing the connections in an electrical circuit.

**TCP (Transmission Control Protocol)** - A network protocol for transmitting data that requires acknowledgement from the recipient of data sent.

**TCP/IP (Transmission Control Protocol/Internet Protocol)** - A set of instructions PCs use to communicate over a network.

**Telnet** - A user command and TCP/IP protocol used for accessing remote PCs.

**TFTP (Trivial File Transfer Protocol)** - A version of the TCP/IP FTP protocol that has no directory or password capability.

**Throughput** - The amount of data moved successfully from one node to another in a given time period.

**TKIP (Temporal Key Integrity Protocol)** - a wireless encryption protocol that provides dynamic encryption keys for each packet transmitted.

**Topology** - The physical layout of a network.

**TX Rate** - Transmission Rate.

**UDP (User Datagram Protocol)** - A network protocol for transmitting data that does not require acknowledgement from the recipient of the data that is sent.

**Upgrade** - To replace existing software or firmware with a newer version.

**Upload** - To transmit a file over a network.

**URL (Uniform Resource Locator)** - The address of a file located on the Internet.

**VPN (Virtual Private Network)** - A security measure to protect data as it leaves one network and goes to another over the Internet.

## Appendix D: Glossary

#### Wireless-G Notebook Adapter

**WAN (Wide Area Network)**- The Internet.

**WEP (Wired Equivalent Privacy)** - A method of encrypting network data transmitted on a wireless network for greater security.

**WINIPCFG** - A Windows 98 and Me utility that displays the IP address for a particular networking device.

**WLAN (Wireless Local Area Network)** - A group of computers and associated devices that communicate with each other wirelessly.

**WPA (Wi-Fi Protected Access)** - a wireless security protocol using TKIP (Temporal Key Integrity Protocol) encryption, which can be used in conjunction with a RADIUS server.



# Appendix E: Specifications

Standards	IEEE 802.11g, IEEE 802.11b, CardBus
Channels	11 Channels (most of the Western Hemisphere) 13 Channels (most of Europe)
LEDs	Power, Link
Transmit Power	15 dBm
Protocols	802.11b: CCK (11 Mbps), DQPSK (2 Mbps), DBPSK (1 Mbps); 802.11g: OFDM
Security Features	WEP, AES, TKIP, 802.1x
WEP Key Bits	64, 128 Bit
Dimensions	115 mm x 54 mm x 7,5 mm
Unit Weight	0,05 kg
Certifications	FCC, CE, ICES-003
Operating Temp.	0°C to 55°C
Storage Temp.	-25°C to 70°C
Operating Humidity	5% to 95%, Non-Condensing
Storage Humidity	5% to 95%, Non-Condensing

# Appendix F: Warranty Information

Linksys warrants to You that, for a period of three years (the "Warranty Period"), your Linksys Product will be substantially free of defects in materials and workmanship under normal use. Your exclusive remedy and Linksys' entire liability under this warranty will be for Linksys at its option to repair or replace the Product or refund Your purchase price less any rebates. This limited warranty extends only to the original purchaser.

If the Product proves defective during the Warranty Period call Linksys Technical Support in order to obtain a Return Authorization Number, if applicable. BE SURE TO HAVE YOUR PROOF OF PURCHASE ON HAND WHEN CALLING. If You are requested to return the Product, mark the Return Authorization Number clearly on the outside of the package and include a copy of your original proof of purchase. RETURN REQUESTS CANNOT BE PROCESSED WITHOUT PROOF OF PURCHASE. You are responsible for shipping defective Products to Linksys. Linksys pays for UPS Ground shipping from Linksys back to You only. Customers located outside of the United States of America and Canada are responsible for all shipping and handling charges.

ALL IMPLIED WARRANTIES AND CONDITIONS OF MERCHANTABILITY OR FITNESS FOR A PARTICULAR PURPOSE ARE LIMITED TO THE DURATION OF THE WARRANTY PERIOD. ALL OTHER EXPRESS OR IMPLIED CONDITIONS, REPRESENTATIONS AND WARRANTIES, INCLUDING ANY IMPLIED WARRANTY OF NON-INFRINGEMENT, ARE DISCLAIMED. Some jurisdictions do not allow limitations on how long an implied warranty lasts, so the above limitation may not apply to You. This warranty gives You specific legal rights, and You may also have other rights which vary by jurisdiction.

This warranty does not apply if the Product (a) has been altered, except by Linksys, (b) has not been installed, operated, repaired, or maintained in accordance with instructions supplied by Linksys, or (c) has been subjected to abnormal physical or electrical stress, misuse, negligence, or accident. In addition, due to the continual development of new techniques for intruding upon and attacking networks, Linksys does not warrant that the Product will be free of vulnerability to intrusion or attack.

TO THE EXTENT NOT PROHIBITED BY LAW, IN NO EVENT WILL LINKSYS BE LIABLE FOR ANY LOST DATA, REVENUE OR PROFIT, OR FOR SPECIAL, INDIRECT, CONSEQUENTIAL, INCIDENTAL OR PUNITIVE DAMAGES, REGARDLESS OF THE THEORY OF LIABILITY (INCLUDING NEGLIGENCE), ARISING OUT OF OR RELATED TO THE USE OF OR INABILITY TO USE THE PRODUCT (INCLUDING ANY SOFTWARE), EVEN IF LINKSYS HAS BEEN ADVISED OF THE POSSIBILITY OF SUCH DAMAGES. IN NO EVENT WILL LINKSYS' LIABILITY EXCEED THE AMOUNT PAID BY YOU FOR THE PRODUCT. The foregoing limitations will apply even if any warranty or remedy provided under this Agreement fails of its essential purpose. Some jurisdictions do not allow the exclusion or limitation of incidental or consequential damages, so the above limitation or exclusion may not apply to You.

**This Warranty is valid and may be processed only in the country of purchase.**

Please direct all inquiries to: Linksys, P.O. Box 18558, Irvine, CA 92623.

# Appendix G: Regulatory Information

## FCC Statement

This product has been tested and complies with the specifications for a Class B digital device, pursuant to Part 15 of the FCC Rules. These limits are designed to provide reasonable protection against harmful interference in a residential installation. This equipment generates, uses, and can radiate radio frequency energy and, if not installed and used according to the instructions, may cause harmful interference to radio communications. However, there is no guarantee that interference will not occur in a particular installation. If this equipment does cause harmful interference to radio or television reception, which is found by turning the equipment off and on, the user is encouraged to try to correct the interference by one or more of the following measures:

- Reorient or relocate the receiving antenna
- Increase the separation between the equipment or devices
- Connect the equipment to an outlet other than the receiver's
- Consult a dealer or an experienced radio/TV technician for assistance

## FCC Radiation Exposure Statement

This equipment complies with FCC radiation exposure limits set forth for an uncontrolled environment. This equipment should be installed and operated with minimum distance 20cm between the radiator and your body.

## Industry Canada (Canada)

This Class B digital apparatus complies with Canadian ICES-003.

Cet appareil numérique de la classe B est conforme à la norme NMB-003 du Canada.

The use of this device in a system operating either partially or completely outdoors may require the user to obtain a license for the system according to the Canadian regulations.

## Compliance Information for 2,4-GHz Wireless Products Relevant to the EU and Other Countries Following EU Directive 1999/5/EC (R&amp;TTE Directive)

## Declaration of Conformity with Regard to the EU Directive 1999/5/EC (R&amp;TTE Directive)

Deutsch [German]:	Dieses Gerät entspricht den grundlegenden Anforderungen und den weiteren entsprechenden Vorgaben der Richtlinie 1999/5/EU.
Dansk [Danish]:	Denne udstyr er i overensstemmelse med de væsentlige krav og andre relevante bestemmelser i Direktiv 1999/5/EF.
English:	This equipment is in compliance with the essential requirements and other relevant provisions of Directive 1999/5/EC.
Español [Spanish]:	Este equipo cumple con los requisitos esenciales así como con otras disposiciones de la Directiva 1999/5/CE.
Ελληνική [Greek]:	Αυτός ο εξοπλισμός είναι σε συμμόρφωση με τις ουσιαστικές απαιτήσεις και άλλες σχετικές διατάξεις της Οδηγίας 1999/5/ΕΚ.
Français [French]:	Cet appareil est conforme aux exigences essentielles et aux autres dispositions pertinentes de la Directive 1999/5/EC.
Íslenska [Icelandic]:	Þetta tæki er samkvæmt grunnkröfum og öðrum viðeigandi ákvæðum Tilskipunar 1999/5/EC.
Italiano [Italian]:	Questo apparato é conforme ai requisiti essenziali ed agli altri principi sanciti dalla Direttiva 1999/5/CE.
Nederlands [Dutch]:	Dit apparaat voldoet aan de essentiële eisen en andere van toepassing zijnde bepalingen van de Richtlijn 1999/5/EC.
Norsk [Norwegian]:	Denne utstyret er i samsvar med de grunnleggende krav og andre relevante bestemmelser i EU-direktiv 1999/5/EF.
Português [Portuguese]:	Este equipamento está em conformidade com os requisitos essenciais e outras provisões relevantes da Directiva 1999/5/EC.
Suomi [Finnish]:	Tämä laite täyttää direktiivin 1999/5/EY olennaiset vaatimukset ja on siinä asetettujen muiden laitetta koskevien määräysten mukainen.
Svenska [Swedish]:	Denna utrustning är i överensstämmelse med de väsentliga kraven och andra relevanta bestämmelser i Direktiv 1999/5/EC.

**NOTE:** If you need any technical documentation, see the "How to Access Technical Documents on [www.linksys.com/international](http://www.linksys.com/international)" section for more information.

## Wireless-G Notebook Adapter

The following standards were applied during the assessment of the product against the requirements of the Directive 1999/5/EC:

- Radio: EN 300.328
- EMC: EN 301 489-1, EN 301 489-17
- Safety: EN 60950

## CE Marking

For the Linksys Wireless-B and Wireless-G products, the following CE mark, notified body number (where applicable), and class 2 identifier are added to the equipment.

**CE 0560** ⓘ or **CE 0678** ⓘ or **CE** ⓘ

Check the CE label on the product to find out which notified body was involved during the assessment.

## National Restrictions

This product may be used in all EU countries (and other countries following the EU directive 1999/5/EC) without any limitation except for the countries mentioned below:

*Ce produit peut être utilisé dans tous les pays de l'UE (et dans tous les pays ayant transposés la directive 1999/5/CE) sans aucune limitation, excepté pour les pays mentionnés ci-dessous:*

*Questo prodotto è utilizzabile in tutte i paesi EU (ed in tutti gli altri paesi che seguono le direttive EU 1999/5/EC) senza nessuna limitazione, eccetto per i paesi menzionati di seguito:*

*Das Produkt kann in allen EU Staaten ohne Einschränkungen eingesetzt werden (sowie in anderen Staaten die der EU Direktive 1995/5/CE folgen) mit Ausnahme der folgenden aufgeführten Staaten:*

## Belgium

Outdoor wireless links with a range in excess of 300 meters need to be notified at the Belgian Institute for Postal Services and Telecommunications (BIPT). Please check <http://www.bipt.be> for more details.

*Draadloze verbindingen voor buitengebruik en met een reikwijdte van meer dan 300 meter dienen aangemeld te worden bij het Belgisch Instituut voor postdiensten en telecommunicatie (BIPT). Zie <http://www.bipt.be> voor meer gegevens.*

## Wireless-G Notebook Adapter

*Les liaisons sans fil pour une utilisation en extérieur d'une distance supérieure à 300 mètres doivent être notifiées à l'Institut Belge des services Postaux et des Télécommunications (IBPT). Visitez <http://www.ibpt.be> pour de plus amples détails.*

### France

In case the product is used outdoors, the output power is restricted in some parts of the band. See Table 1 or check <http://www.art-telecom.fr/> for more details.

*Dans la cas d'une utilisation en extérieur, la puissance de sortie est limitée pour certaines parties de la bande. Reportez-vous à la table 1 ou visitez <http://www.art-telecom.fr/> pour de plus amples détails.*

Table 1: Applicable Power Levels in France

Location	Frequency Range (MHz)	Power (EIRP)
Indoor (No restrictions)	2400-2483.5	100 mW (20 dBm)
Outdoor	2400-2454 2454-2483.5	100 mW (20 dBm) 10 mW (10 dBm)

### Italy

This product meets the National Radio Interface and the requirements specified in the National Frequency Allocation Table for Italy. Unless operating within the boundaries of the owner's property, the use of this 2,4 GHz Wireless LAN product requires a 'general authorization'. Please check with <http://www.comunicazioni.it/it/> for more details.

*Questo prodotto è conforme alla specifiche di Interfaccia Radio Nazionali e rispetta il Piano Nazionale di ripartizione delle frequenze in Italia. Se non viene installato all'interno del proprio fondo, l'utilizzo di prodotti Wireless LAN a 2,4 GHz richiede una "Autorizzazione Generale". Consultare <http://www.comunicazioni.it/it/> per maggiori dettagli.*

### Product Usage Restrictions

This product is designed for indoor usage only. Outdoor usage is not recommended.

This product is designed for use with the included integral or external (dedicated) antenna(s). Use of non-dedicated or third-party antenna(s) is not recommended and is not supported by Linksys.

## Wireless-G Notebook Adapter

### Power Output of Your Device

To comply with your country's regulations, you may have to change the power output of your wireless device. Proceed to the appropriate section for your device.

Note: The power output setting may not be available on all wireless products. For more information, refer to the documentation on your product's CD or at <http://www.linksys.com/international>.

### Wireless Adapters

Wireless adapters have the power output set to 100% by default. Maximum power output on each adapter does not exceed 20 dBm (100 mW); it is generally 18 dBm (64 mW) or below. If you need to alter your wireless adapter's power output, follow the appropriate instructions for your computer's Windows operating system:

#### Windows XP

1. Double-click the **Wireless** icon in your desktop's system tray.
2. Open the *Wireless Network Connection* window.
3. Click the **Properties** button.
4. Select the **General** tab, and click the **Configure** button.
5. In the *Properties* window, click the **Advanced** tab.
6. Select **Power Output**.
7. From the pull-down menu on the right, select the wireless adapter's power output percentage.

#### Windows 2000

1. Open the **Control Panel**.
2. Double-click **Network and Dial-Up Connections**.
3. Select your current wireless connection, and select **Properties**.
4. From the *Properties* screen, click the **Configure** button.
5. Click the **Advanced** tab, and select **Power Output**.
6. From the pull-down menu on the right, select the wireless adapter's power setting.

If your computer is running Windows Millennium or 98, then refer to Windows Help for instructions on how to access the advanced settings of a network adapter.

### Wireless Access Points, Routers, or Other Wireless Products

If you have a wireless access point, router or other wireless product, use its Web-based Utility to configure its power output setting (refer to the product's documentation for more information).

## Technical Documents on [www.linksys.com/international](http://www.linksys.com/international)

Follow these steps to access technical documents:

1. Browse to <http://www.linksys.com/international>.
2. Click the region in which you reside.
3. Click the name of the country in which you reside.
4. Click **Products**.
5. Click the appropriate product category.
6. Select a product.
7. Click the type of documentation you want. The document will automatically open in PDF format.

Note: If you have questions regarding the compliance of these products or you cannot find the information you are looking for, please contact your local sales office. Visit <http://www.linksys.com/international> for more details.



# Appendix H: Contact Information

Need to contact Linksys?

Visit us online for information on the latest products and updates to your existing products at:

<http://www.linksys.com/international>

If you experience problems with any Linksys product, you can e-mail us at:

In Europe	E-mail Address
Austria	support.at@linksys.com
Belgium	support.be@linksys.com
Denmark	support.dk@linksys.com
France	support.fr@linksys.com
Germany	support.de@linksys.com
Italy	support.it@linksys.com
Netherlands	support.nl@linksys.com
Norway	support.no@linksys.com
Portugal	support.pt@linksys.com
Spain	support.es@linksys.com
Sweden	support.se@linksys.com
Switzerland	support.ch@linksys.com
United Kingdom & Ireland	support.uk@linksys.com

Outside of Europe	E-mail Address
Latin America	support.la@linksys.com
U.S. and Canada	support@linksys.com

## Free Manuals Download Website

<http://myh66.com>

<http://usermanuals.us>

<http://www.somanuals.com>

<http://www.4manuals.cc>

<http://www.manual-lib.com>

<http://www.404manual.com>

<http://www.luxmanual.com>

<http://aubethermostatmanual.com>

Golf course search by state

<http://golfingnear.com>

Email search by domain

<http://emailbydomain.com>

Auto manuals search

<http://auto.somanuals.com>

TV manuals search

<http://tv.somanuals.com>