



Package Contents

- Wireless-B Ethernet Bridge
- Quick Installation Guide
- Setup CD-ROM
- User's Guide on CD
- Detachable Antenna
- Power Adapter
- Network Cable
- Registration Card

2.4GHz
802.11b

Wireless-B
Ethernet Bridge

Quick Installation

Wireless



1 Connecting the Wireless-B Ethernet Bridge for Setup

- A** Attach the Bridge's antenna.
- B** Plug the included Ethernet network cable into the LAN port on the back panel of the Bridge.
- C** The X-II (MDI/MDI-X) slide switch offers a choice between two settings. Slide the X-II switch to the X position if you are connecting the Bridge to a PC's network adapter. Slide the X-II switch to the II position if you are connecting the Bridge to a hub or switch.
- D** Plug the other end of the Ethernet network cable into the RJ-45 port of the hub, switch, or PC you wish to use to configure the Bridge.
- E** Plug the supplied power adapter into the Power port on the back panel of the Bridge. Then plug the other end into an electrical outlet.



2 Setting up the Wireless-B Ethernet Bridge

- A** Insert the Setup CD-ROM into your PC's CD-ROM drive. The Setup Utility should run automatically, and the *Welcome* screen should appear. If it does not appear, click the **Start** button and choose **Run**. In the field that appears, enter **D:\setup.exe** (if "D" is the letter of your CD-ROM drive).
- B** Click **Setup** to begin the setup process.
- C** Make sure the Bridge is correctly connected to your wired network. Click **Next**.
- D** The screen displays a list of Wireless-B Ethernet Bridges on your network, along with their status information. Select the Bridge you are currently installing by clicking its name in the *Selection* box. Click **Yes**.
- E** The *Password* screen will appear. In lowercase letters, enter **admin** in the *Password* field. Then click **Enter**.



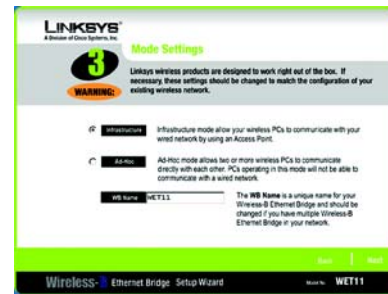
F On the *Mode Settings* screen, click the **Infrastructure** radio button if you want your wireless and wired networks to communicate using a wireless access point. Click the **Ad-Hoc** radio button if you want wireless computers to communicate directly with each other.

In the *WB Name* field, enter a unique name for the Bridge. Click **Next**.

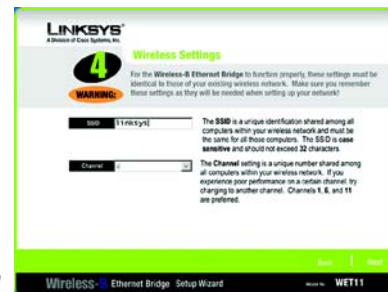
G On the *Wireless Settings* screen, enter your wireless network's SSID. If you chose Ad-Hoc mode, select the channel at which the network broadcasts its wireless signal. Then click **Next**.

H The *IP Settings* screen will appear. If your network has a router or DHCP server that automatically assigns IP addresses, click the radio button next to *Automatically obtain an IP address (DHCP)*. Click **Next** and proceed to step I.

If you need to assign a static IP address to the Bridge, click the radio button next to *Set IP configuration manually*. Enter an IP Address, IP Mask (also known as Subnet Mask), and



F



G



H

NOTE: The default IP address of the Bridge is **192.168.1.225**.

Gateway appropriate for your network. You must specify an IP address on this screen. If you are unsure about the IP Mask and Gateway, leave these two fields blank. Click **Next** and proceed to step I.

I The *Security Settings* screen will appear. If your network has WEP encryption enabled, then select the level of WEP encryption, and enter a Passphrase. If you do not have a Passphrase and want to manually enter a WEP key, leave the *Passphrase* field blank. If your network has WEP encryption disabled, keep the default, **Disabled**.

Then click **Next**.

J If you entered a Passphrase, you will see the automatically generated WEP key. (See Figure J.) Otherwise, manually enter the WEP key in the *Key 1* field. Click **Next**.

K Review your settings on the *Confirmation* screen. Write down the Bridge's IP Address if you want to access the Bridge's Web-based Utility. Click **Yes** to save these settings.

L On the *Congratulations* screen, click **Exit**.



I



J



K

A After configuration, unplug the power adapter from the electrical outlet, and unplug the Ethernet network cable from the PC.

B Plug the Ethernet network cable into the RJ-45 port on the Ethernet-ready network device you wish to add to the wireless network.

C Plug the power adapter into a local electrical outlet.

NOTE: If you do not have an active connection to the Ethernet-ready network device, then change the position of the X-II switch.

Congratulations! The installation of the Wireless-B Ethernet Bridge is complete.

LINKSYS
A Division of Cisco Systems, Inc.

For additional information or troubleshooting help, refer to the User Guide on the Setup CD-ROM. You can also call or e-mail for further support.

24-hour Technical Support
800-326-7114
(toll-free from US or Canada)

E-mail Support
support@linksys.com

Website
<http://www.linksys.com> or
<http://support.linksys.com>

RMA (Return Merchandise Authorization)
<http://www.linksys.com/support>

FTP Site
<ftp://ftp.linksys.com>

Sales Information
800-546-5797 (800-LINKSYS)

Linksys is a registered trademark or trademark of Cisco Systems, Inc. and/or its affiliates in the U.S. and certain other countries. Copyright © 2003 Cisco Systems, Inc. All rights reserved.

WET11_V2-Q1-30919NC JL

Free Manuals Download Website

<http://myh66.com>

<http://usermanuals.us>

<http://www.somanuals.com>

<http://www.4manuals.cc>

<http://www.manual-lib.com>

<http://www.404manual.com>

<http://www.luxmanual.com>

<http://aubethermostatmanual.com>

Golf course search by state

<http://golfingnear.com>

Email search by domain

<http://emailbydomain.com>

Auto manuals search

<http://auto.somanuals.com>

TV manuals search

<http://tv.somanuals.com>