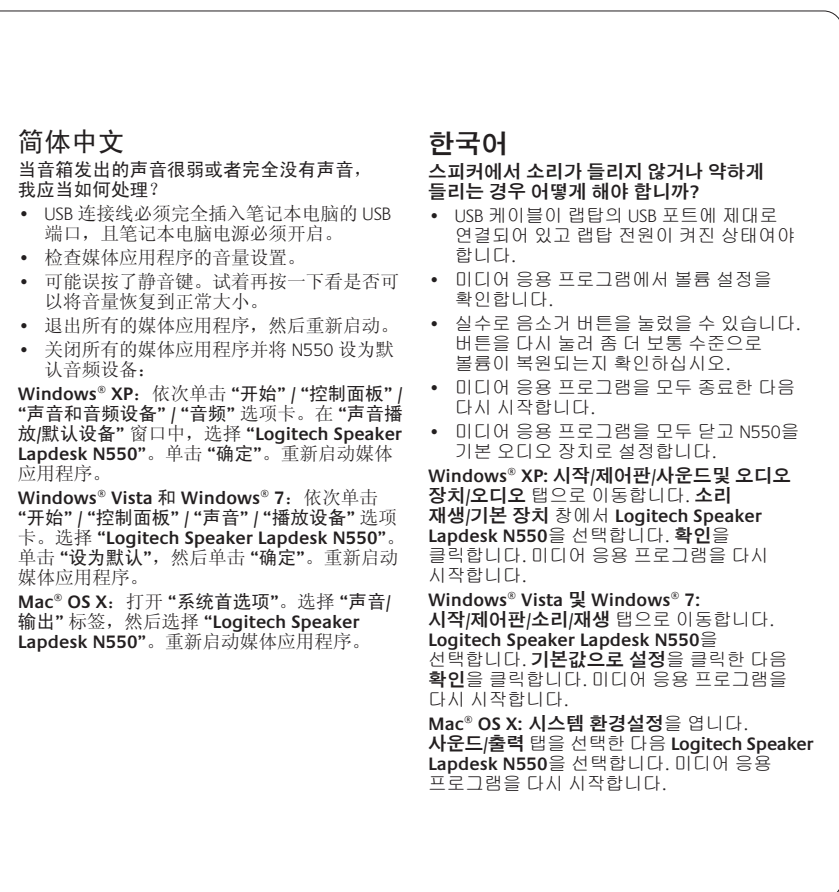
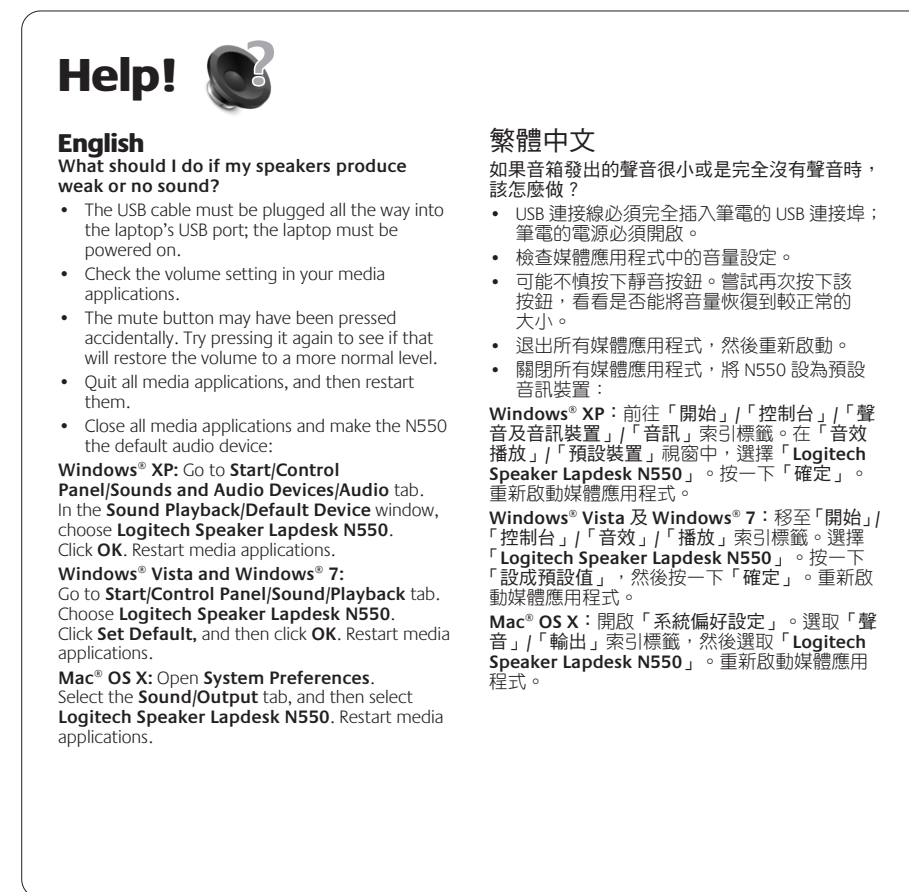
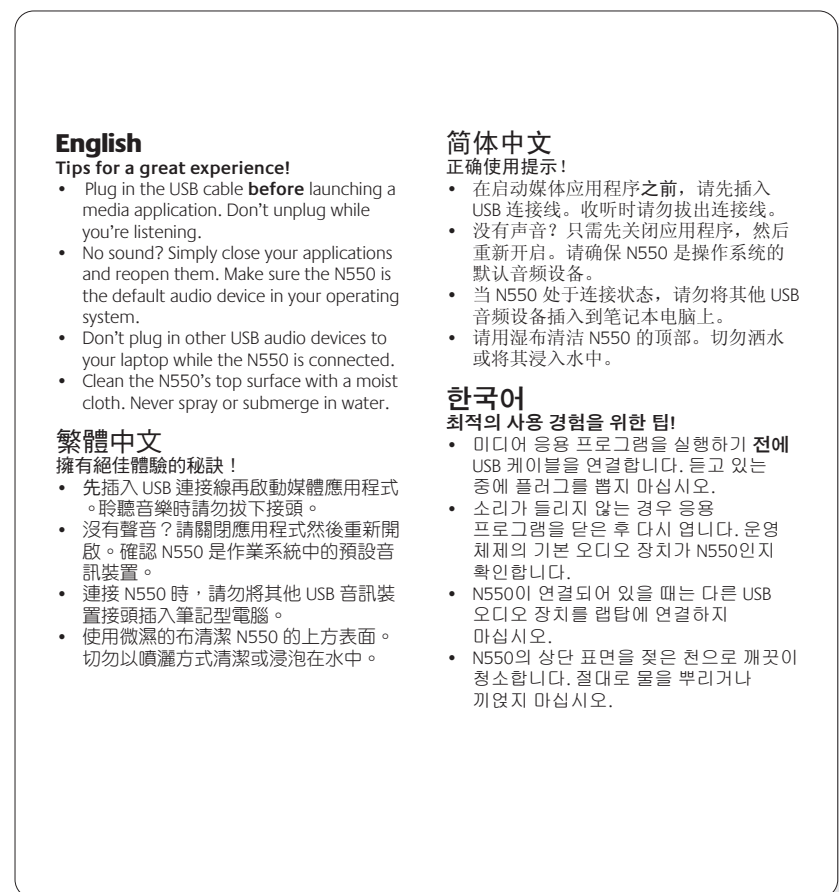
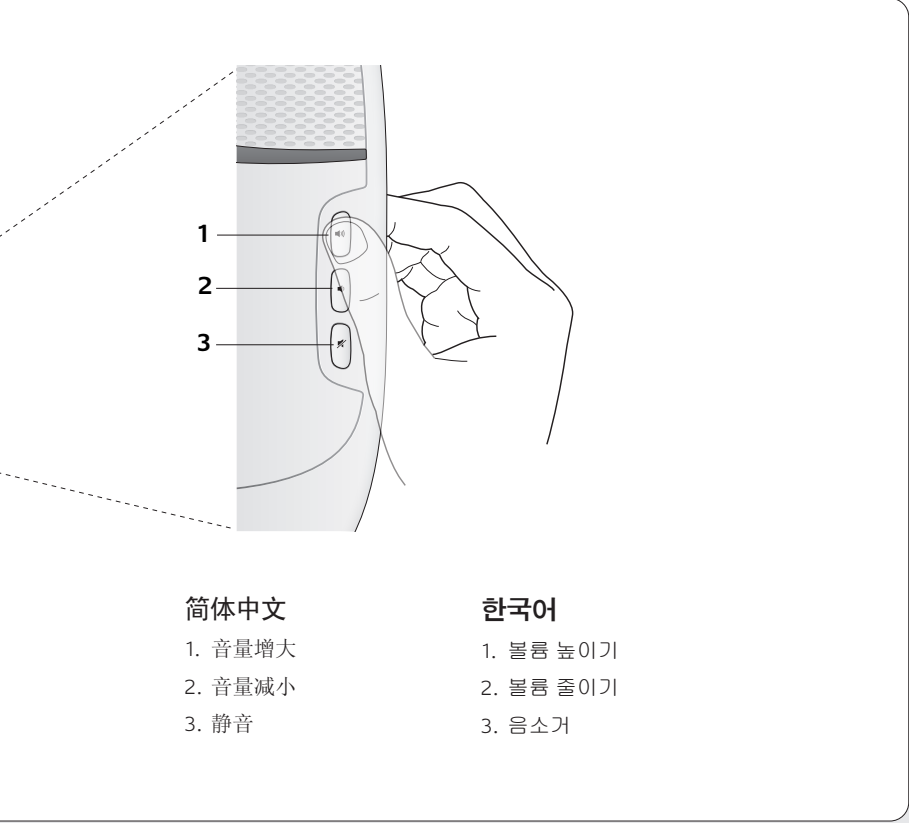
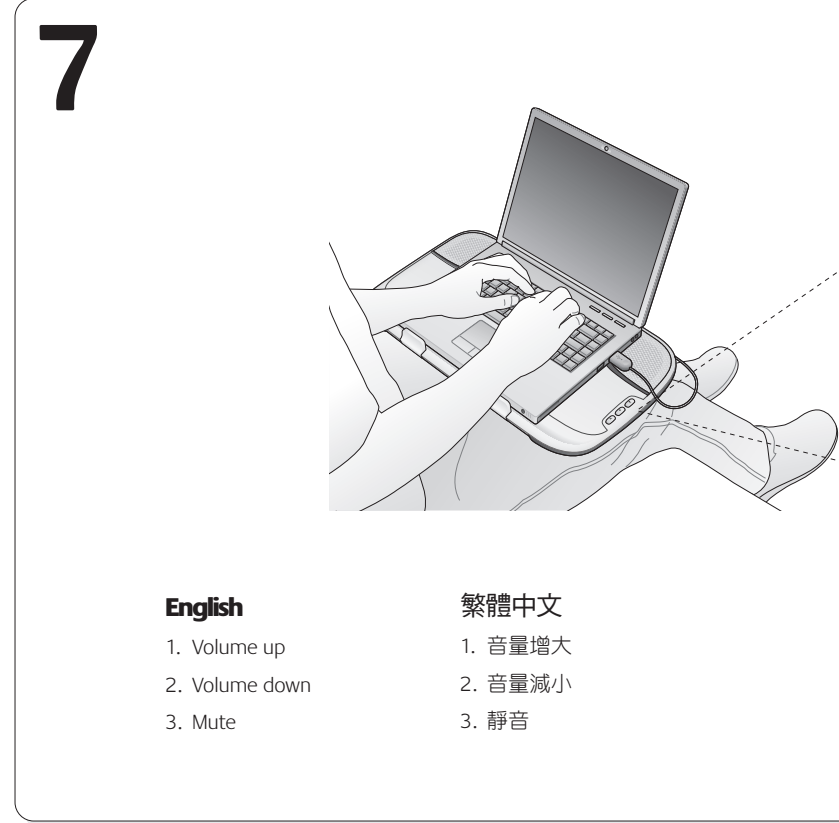
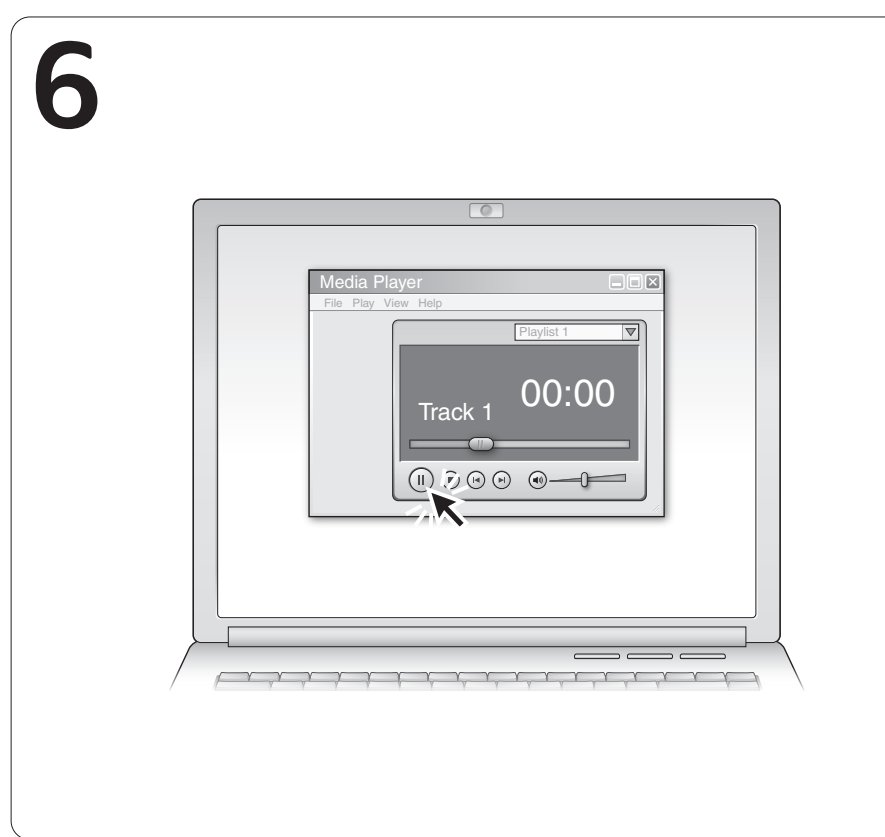
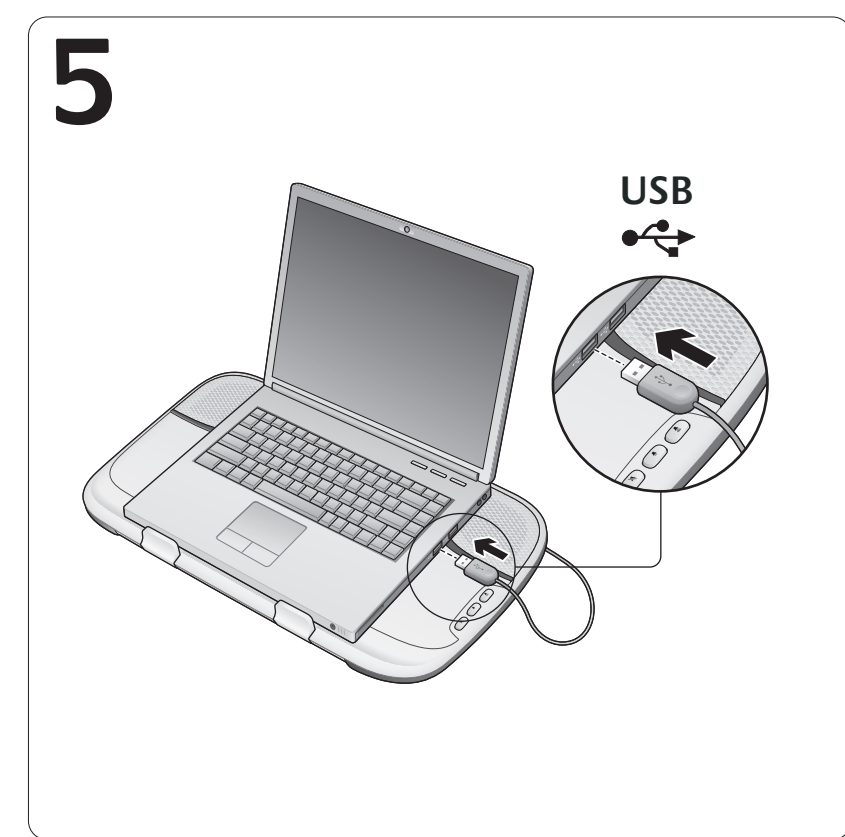
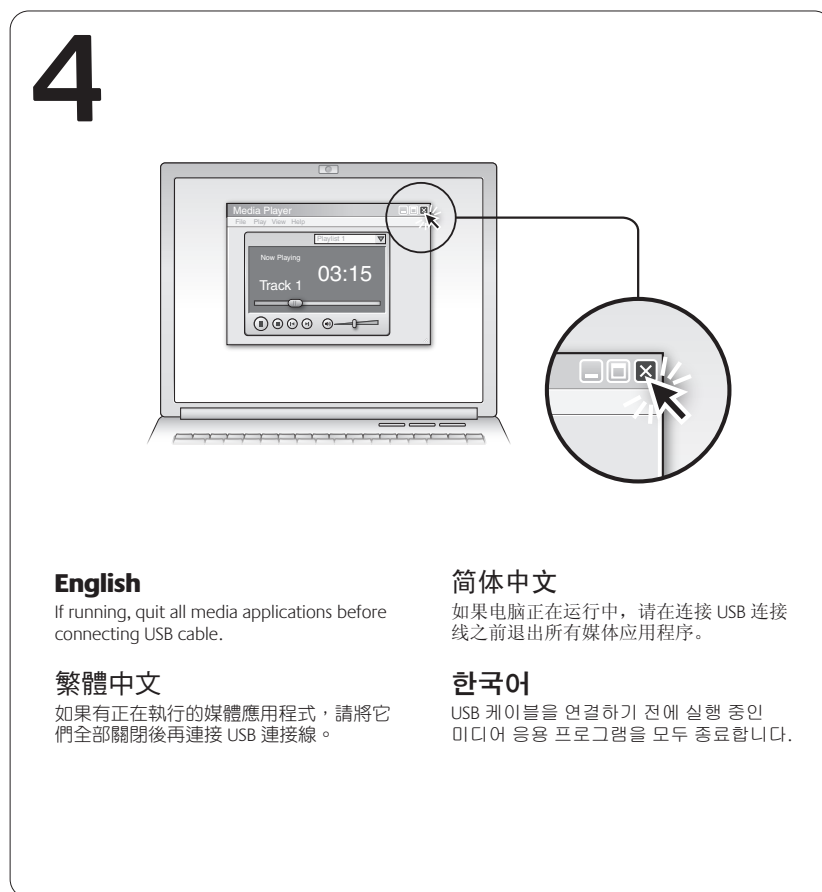
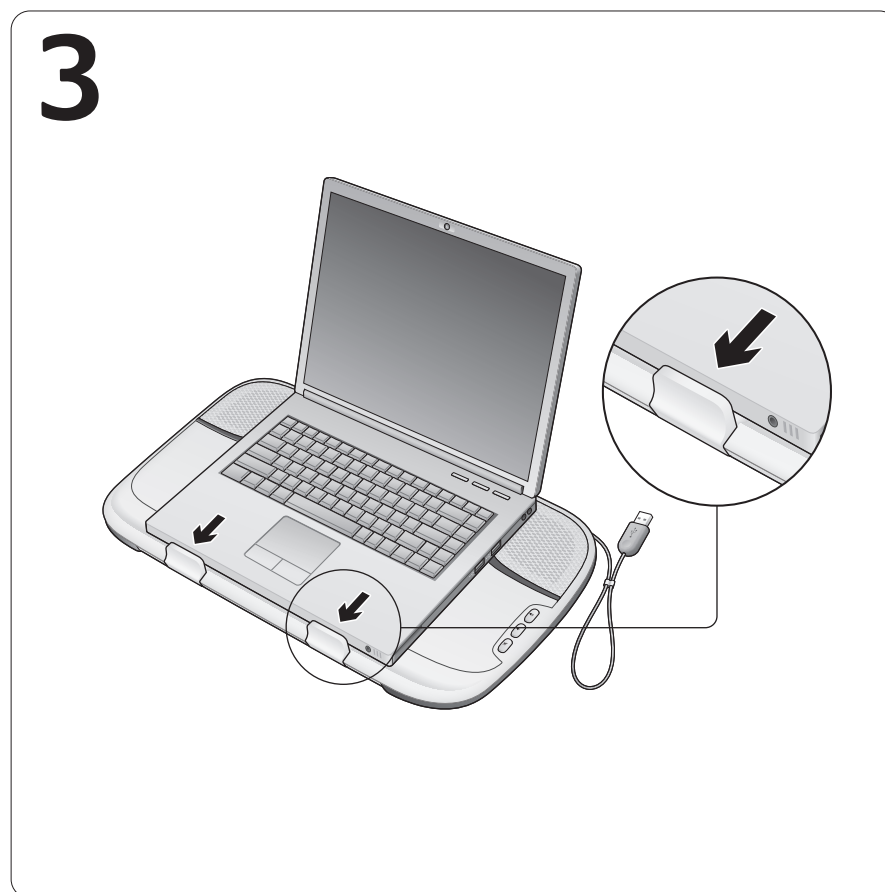
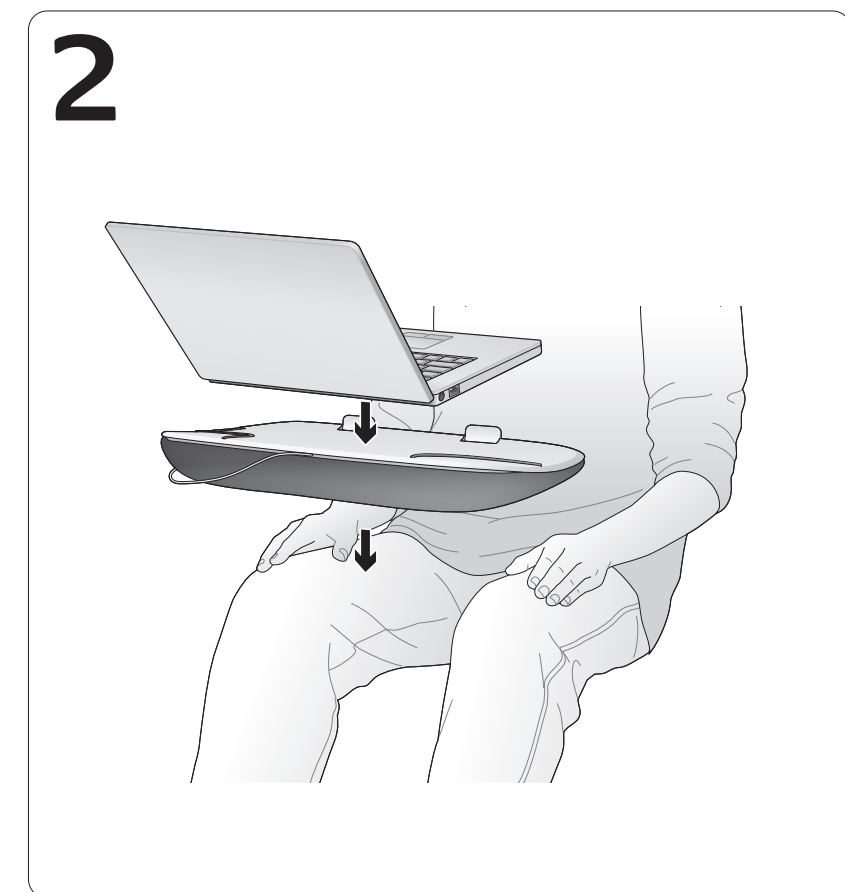
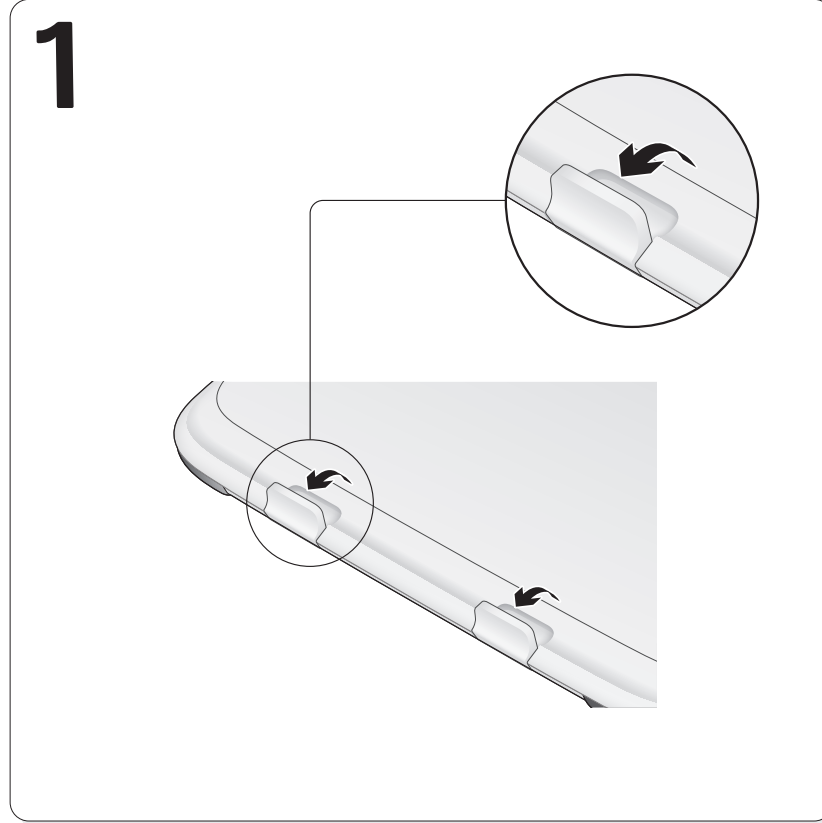
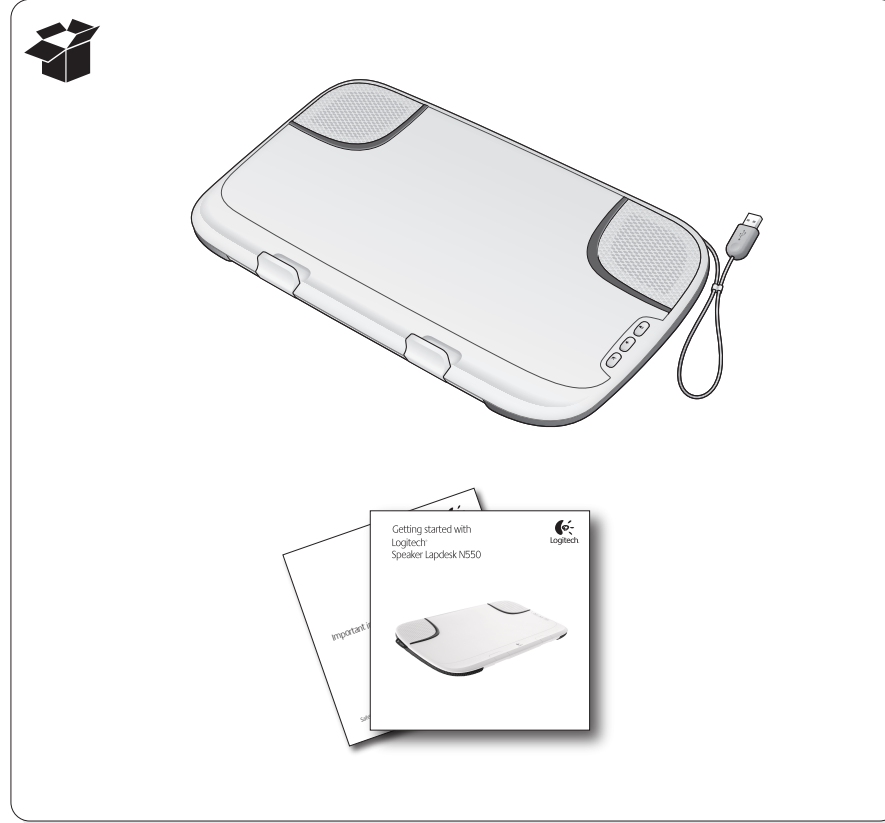


Getting started with Logitech Speaker Lapdesk N550



产品中有毒有害物质元素的名称及含量
 请见中国《电子信息产品污染控制管理办法》

有害物质名称及含量	铅 (Pb)	汞 (Hg)	镉 (Cd)	六价铬 (Cr6+)	多溴联苯 (PBBs)	多溴联苯醚 (PBDEs)
塑料外壳	X	0	0	0	0	0
塑料按键	X	0	0	0	0	0
电路板	X	0	0	0	0	0
电源线	X	0	0	0	0	0
电源线	X	0	0	0	0	0

注: 有害物质名称及含量符合中国强制性标准 GB 15320-2004 和 GB 15321-2004 的要求。

注: 有害物质名称及含量符合中国强制性标准 GB 15320-2004 和 GB 15321-2004 的要求。

注: 有害物质名称及含量符合中国强制性标准 GB 15320-2004 和 GB 15321-2004 的要求。

Free Manuals Download Website

<http://myh66.com>

<http://usermanuals.us>

<http://www.somanuals.com>

<http://www.4manuals.cc>

<http://www.manual-lib.com>

<http://www.404manual.com>

<http://www.luxmanual.com>

<http://aubethermostatmanual.com>

Golf course search by state

<http://golfingnear.com>

Email search by domain

<http://emailbydomain.com>

Auto manuals search

<http://auto.somanuals.com>

TV manuals search

<http://tv.somanuals.com>