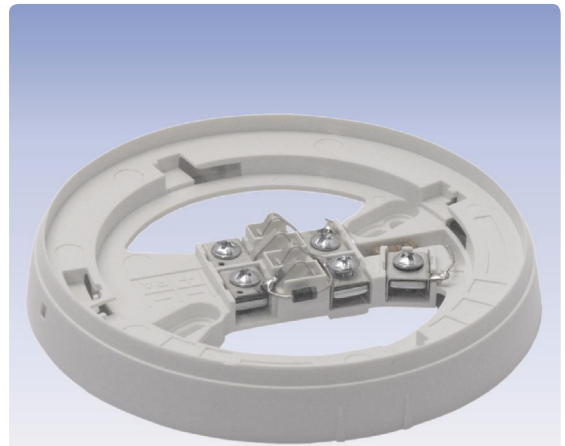


Diode Base Series FC600

FC600/BRD

- Suitable for automatic detectors in conventional technology
- Integrated Schottky diode ensures access to detectors following a base with missing detector
- Designed for indoor surface mounting
- Terminals for connection of external remote indicator
- Anti-tamper locking feature



Description

The detector base FC600/BRD is designed for the easy connection of automatic detectors of Series FC600 in conventional technology. Thanks to its robust sharable connection terminals, the detectors can be durably wired in secure screw joints with virtually no effort. The base provides an easy connection option for an external remote indicator and is designed for wall mounting in dry rooms. The integrated Schottky diode guarantees access to detectors that follow a base where the detector is mis-

sing. In fire detection systems with both automatic detectors and manual call points connected to the same detector line – provided that this feature is allowed by local regulations, the diode ensures alarm detection from detectors following the base.

By breaking out a plastic bolt in the base, the detector that has been inserted can be secured against unauthorized removal.

Specifications

Ambient temperature	-30°C to +70°C
Relative humidity	5 – 95% (no condensation)
Dimensions ø × h	110 × 16 (mm)
Colour	white
Weight	36g
Order number	246071
Order name	Detector Base With Diode/FC600 FC600/BRD

Free Manuals Download Website

<http://myh66.com>

<http://usermanuals.us>

<http://www.somanuals.com>

<http://www.4manuals.cc>

<http://www.manual-lib.com>

<http://www.404manual.com>

<http://www.luxmanual.com>

<http://aubethermostatmanual.com>

Golf course search by state

<http://golfingnear.com>

Email search by domain

<http://emailbydomain.com>

Auto manuals search

<http://auto.somanuals.com>

TV manuals search

<http://tv.somanuals.com>